



Wyandotte County




FEMA

*Floodplain Mapping Project
Enhanced BLE Kickoff Meeting*

April 2, 2024



**While we are waiting, please enter your name
and community in the chat box!**



***Your engagement
in this process is
important to the
success of this
project, so thank
you for taking the
time to be here
today!***



**THANK
YOU**



Introductions



Kansas Department of Agriculture

Joanna Rohlf, CFM
*Floodplain Mapping
Coordinator*

William Pace, CFM
*Floodplain Mapping
Specialist*

Keegan Schwartz
*Floodplain Outreach
Specialist*

Benesch

Maria Neeland, PE, CFM
Project Manager

Tara Lanzrath, CFM
State NFIP Coordinator

Cheyenne Sun Eagle, CFM
NFIP Specialist

FEMA – Region VII

Dawn Livingston
Regional Project Officer

Joe File, PE, CFM
Sr. Project Manager

Over the past 30 years, flooding has been more dangerous in the U.S. than any other weather-related problem. To minimize flood damage, we must first understand where the risk is.



Overview

Flood Maps Affect Important Decisions



***To Identify
Flood Risks
and Need
for
Insurance***



***To Establish
When Flood
Insurance Is
Required***



***To
Determine
Land Use &
Update
Ordinances***



***To Inform
Engineers
and
Developers***



***To Equip
Emergency
Managers***



Effective Wyandotte County Maps

- The Effective Floodplains for Wyandotte County are dated September 2011, February 2014 and September 2015
- However, the engineering analysis used for the effective mapping dates all the way back to 1977 for some of the streams in the County.

Why We're Here: The Big Picture



We want to develop a more current picture of your flood hazards and risks, providing supplemental non-regulatory flood hazard data for use.

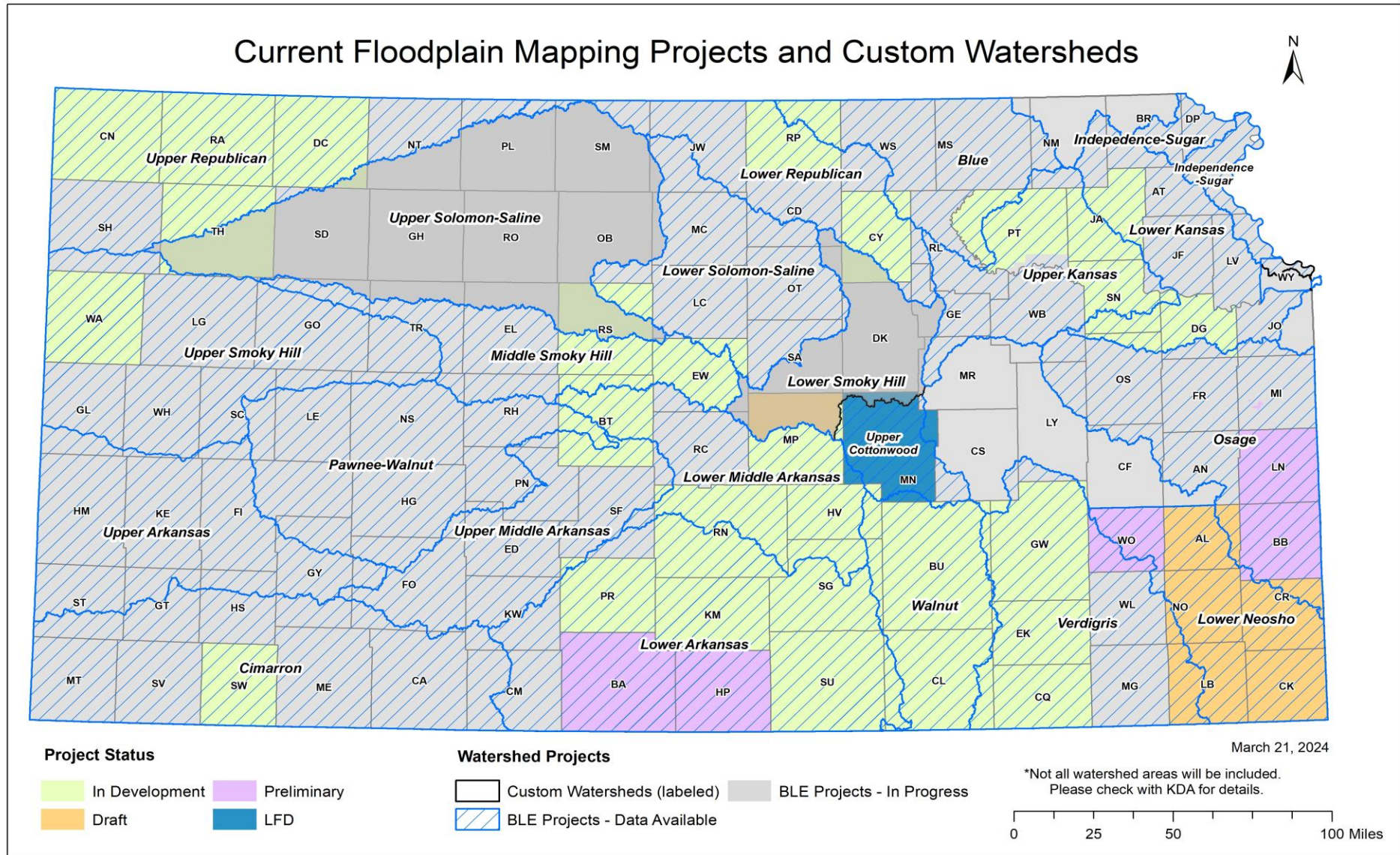
The ultimate goal is to help you better:

*Plan for how
to reduce
flood risk*

*Communicate
the risk to your
citizens*

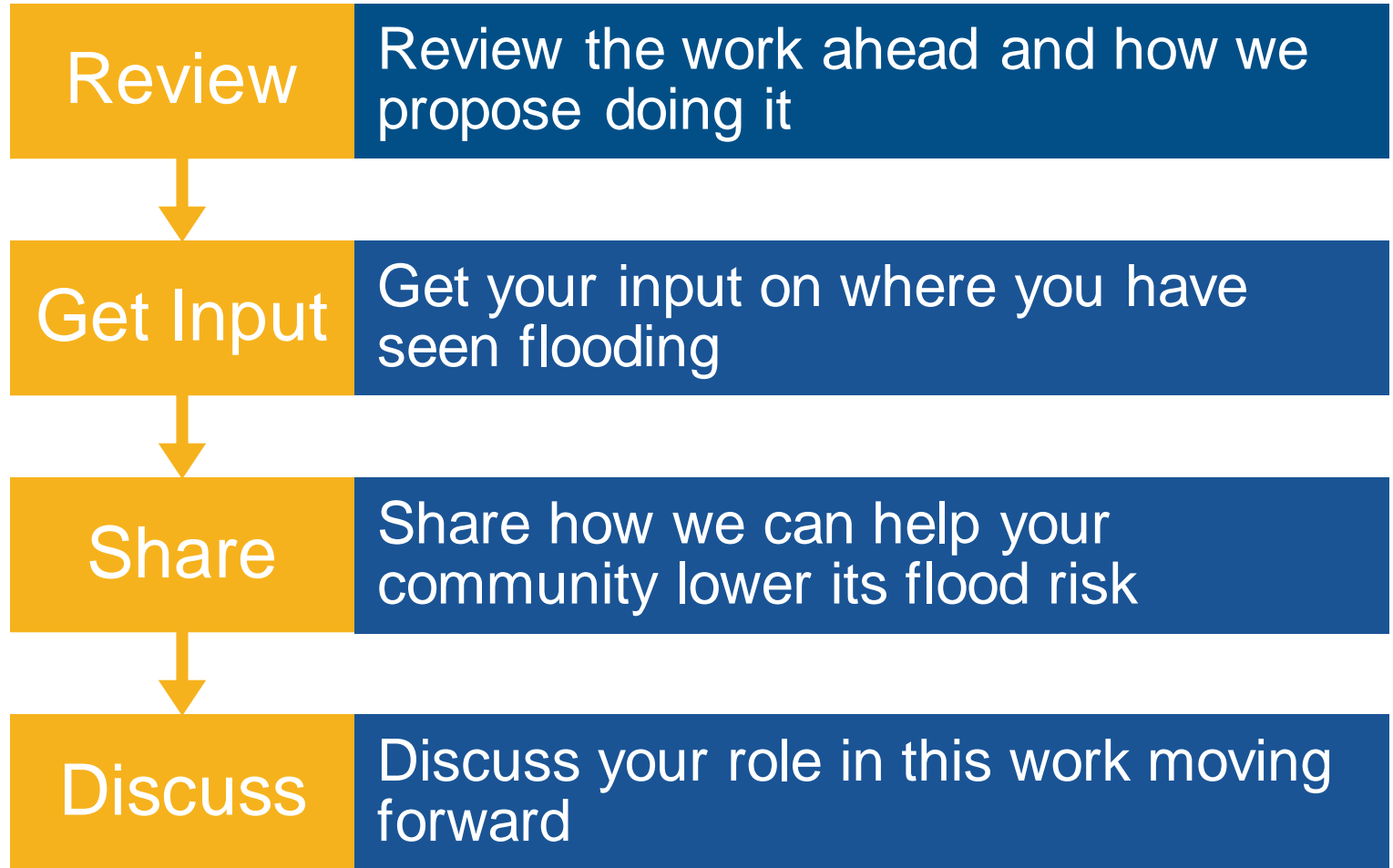
*Take action to
protect your
communities*

We are doing similar work across Kansas...





Today's Goals



Review of the Work Ahead and How We Propose Doing It



Base Level Engineering: What is it?

BLE is an engineering approach that provides an initial (or “base” line) understanding of flood hazards, providing enough information for us to draft initial floodplains.

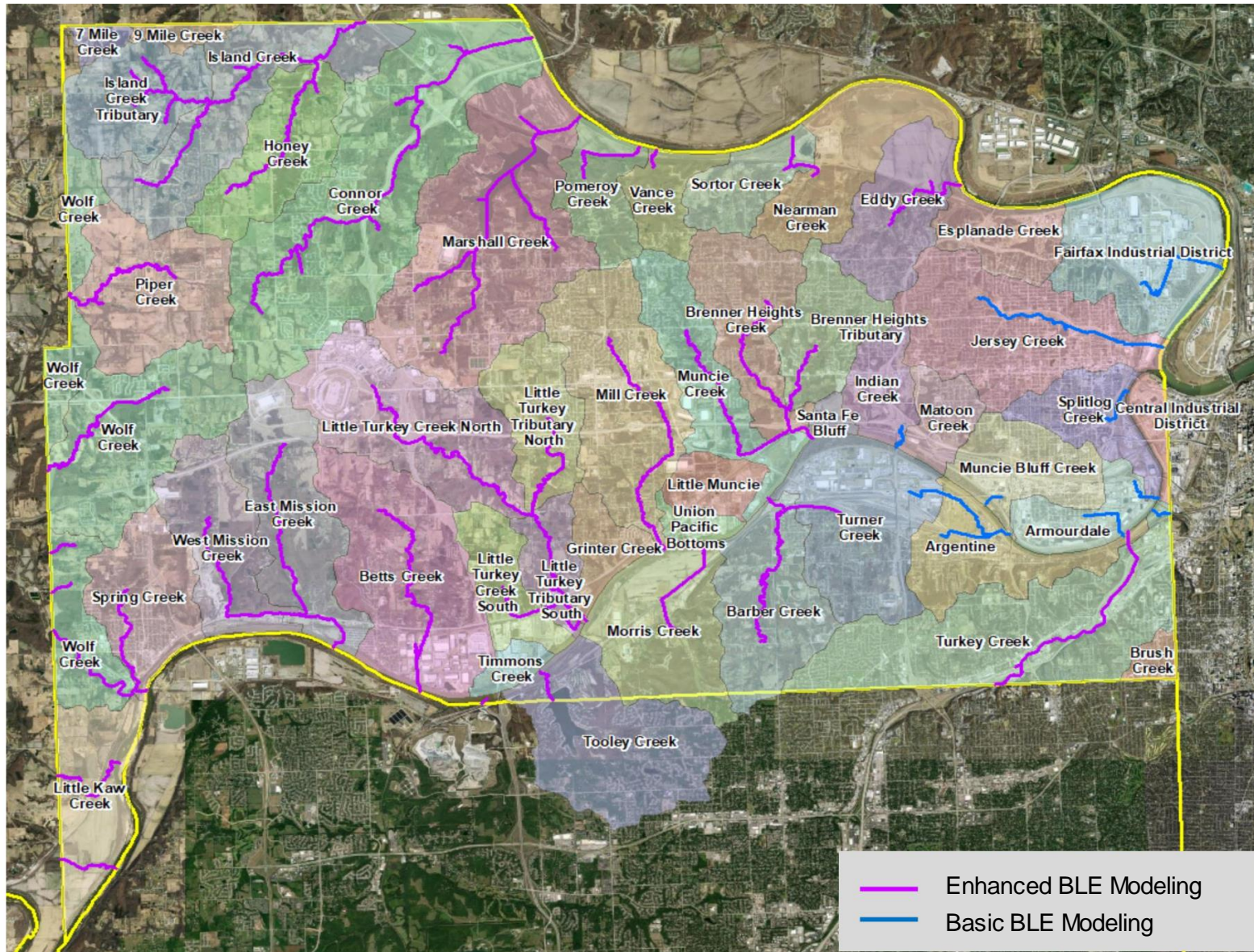
- Provides flood hazard information for areas that currently have no information, little information, or outdated information.
- Initiated prior to entering a regulatory update to be able to determine the best path forward for regulatory mapping updates, what further enhancements are needed to the modeling, potential impacts to communities, and what mitigation opportunities exist.



Overview of Project

- Due to the urban setting of Wyandotte County, enhanced BLE is appropriate for much of the County to provide the most accurate initial level of data possible.
- Areas with planned or on-going projects, as discussed with the UG, will be modeled as basic BLE, since it is assumed that detailed modeling would either be leveraged or developed at a later date for these areas.

Overview of Project

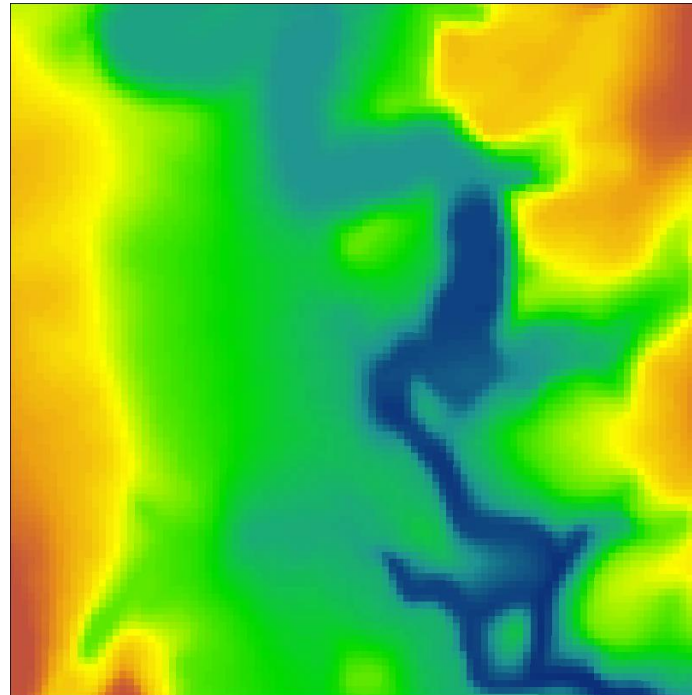




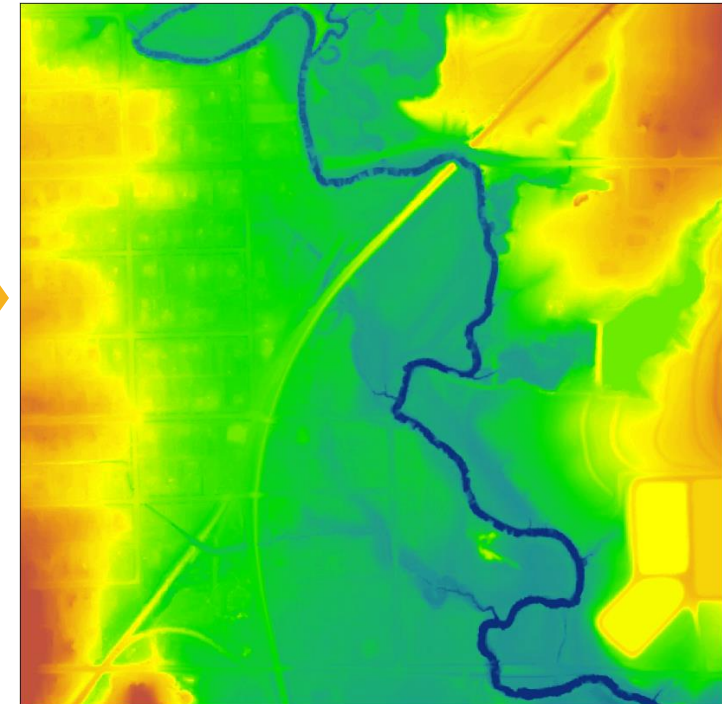
Updated LiDAR Topography will be used in the new modeling.

LIDAR will be used

10m DEM



LiDAR

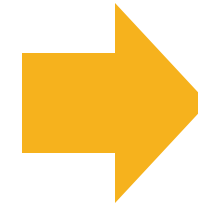
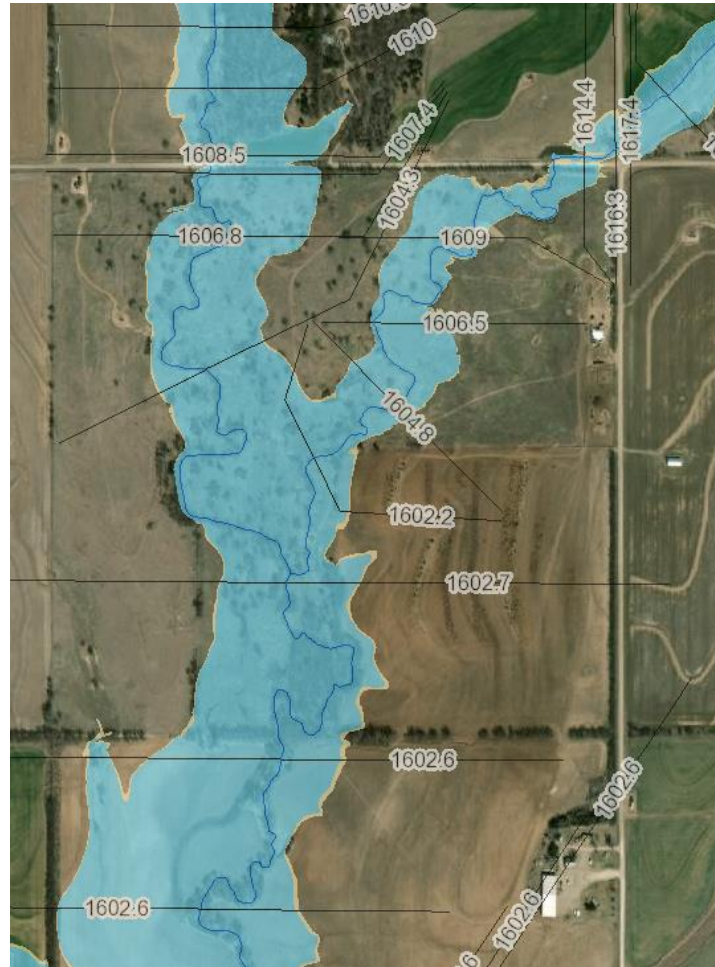


**Bare-Earth*

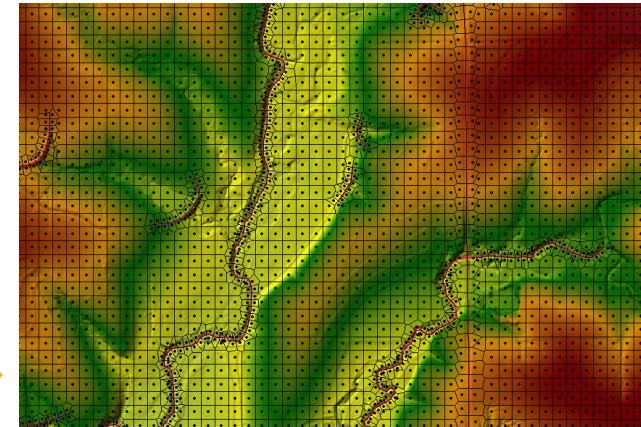


The current maps are done with one-dimensional (1D) modeling. Two-dimensional (2D) modeling will be used for the new modeling.

**2D Modeling
will be used**



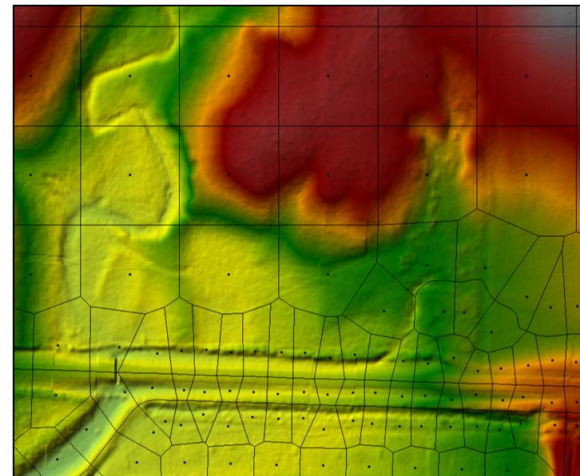
1-D 2-D



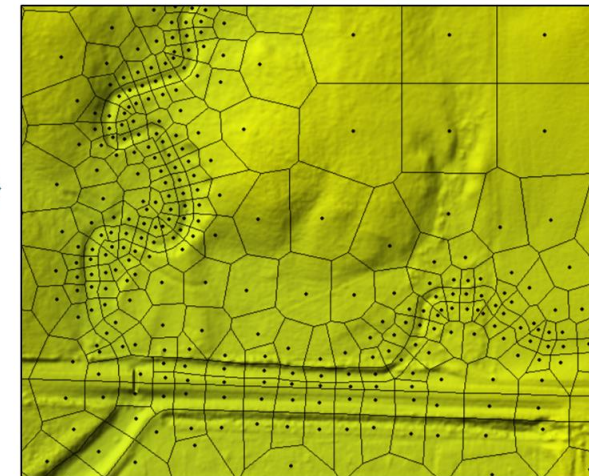
Enhanced BLE: What is it?

Enhanced BLE incorporates additional information that improves the accuracy of the modeling and draft mapping.

- Will include field surveyed data for culverts and bridges
- More refinement in the model mesh
- More refinement in the landuse



Coarser Mesh



Refined Mesh

**It enhances the flood hazard information, particularly for more urbanized/populated areas*

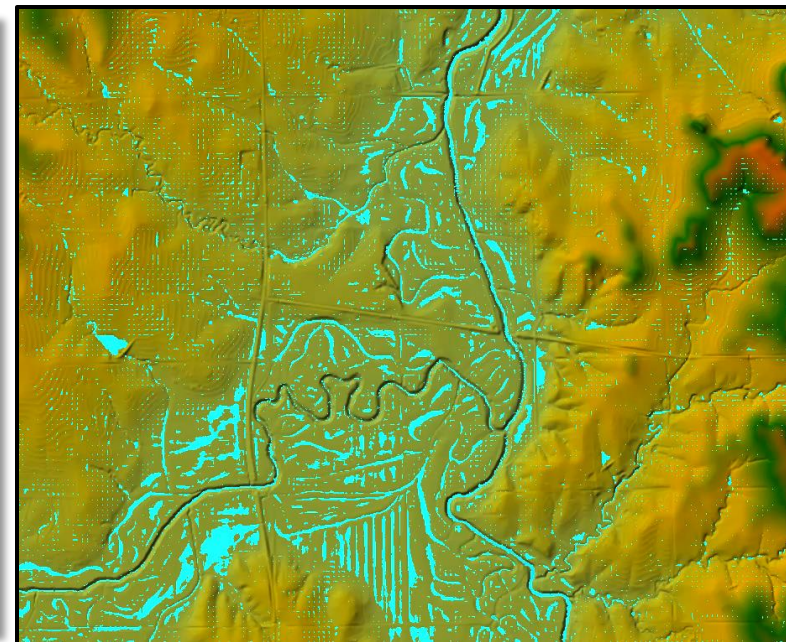
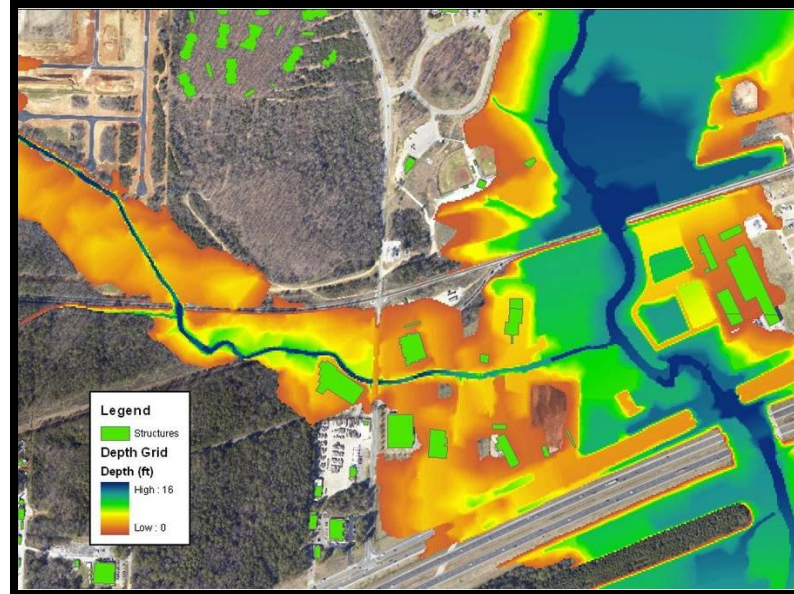


Enhanced BLE: What is it not?

- Enhanced BLE does not include floodway analysis
- Enhanced BLE will not result in a regulatory mapping update.
 - There is not a current timeline for moving forward with regulatory mapping updates.
 - Additional enhancements, including a floodway analysis, would be required before models are at an acceptable level for a regulatory map.
 - These updates would be part of a data development project.
 - The scope for a data development project would be coordinated with the local communities.



*More precise data
and modeling
methods gives
you more
information about
flood risk*





Key Takeaways for BLE

1

Uses advanced engineering techniques

2

Provides early insight into community flood risk

3

It's an important step in our partnership to get the data right

We Need Your Input:



***How are your
community's
daily activities
impacted when
it floods?***





What Information Can you Share?

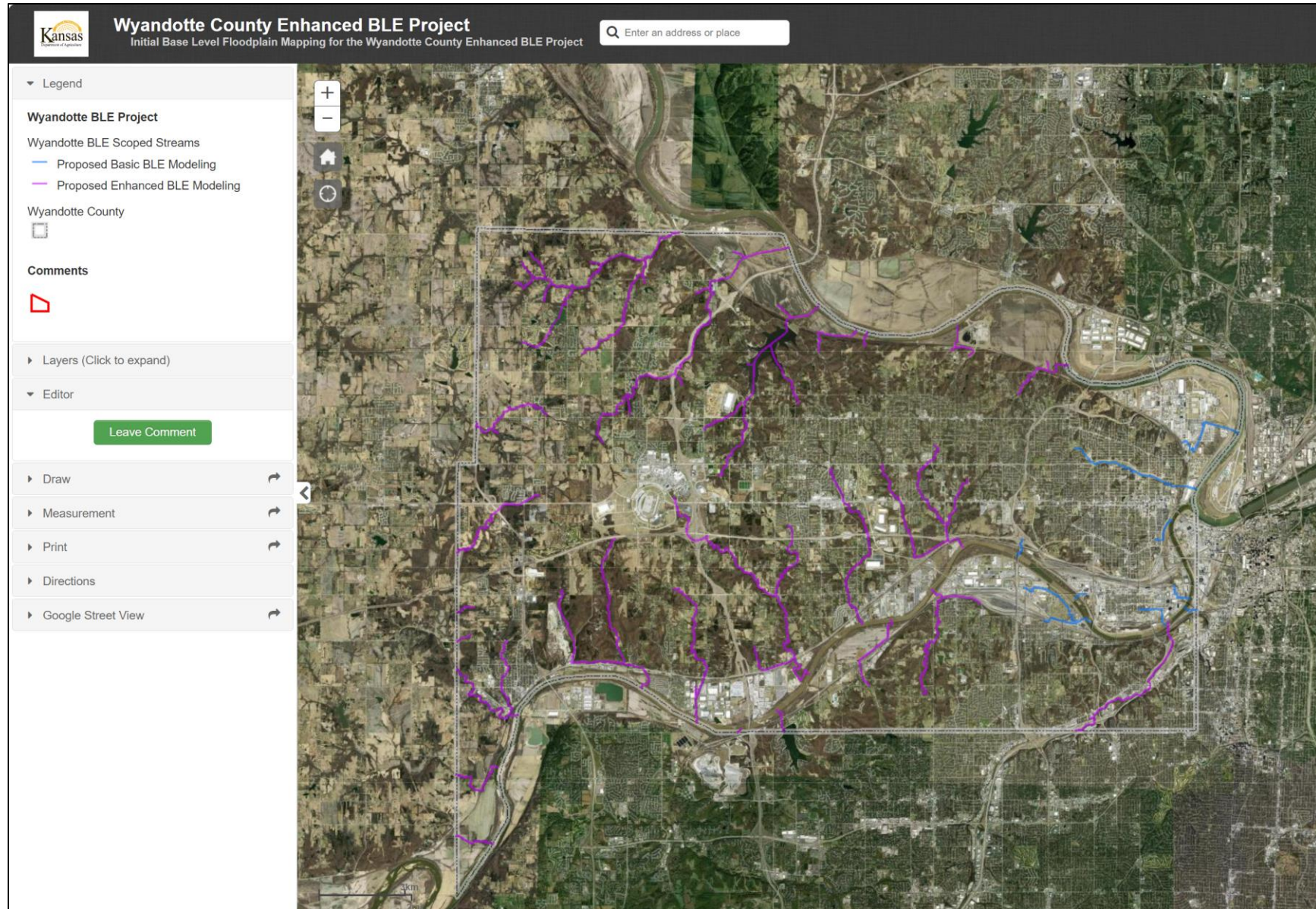
- Share what current projects are on-going that have an impact on flooding or relevant data that is available
 - Storm sewer work
 - Levee work
 - Other projects



What Information Can you Share?

- Can you provide us with locations of known flooding issues?
 - Intersections that often flood and stop traffic?
 - Drainage areas that cause problems?
 - Any parts of town where homes or businesses have flooded?
- Helps us with validation of the modeling performed*
- What areas have had recent construction/development? Where are there plans to build?
 - Are there any particularly challenging areas that warrant a closer look?
 - Where is effective mapping inadequate?

Image of Web Map



How We Can Help

“Mitigation Technical Assistance”



How We Can Help

STEP 1:



Explain what you need help with.

STEP 2:



We determine if it's something we can support.

STEP 3:



If we can support it, we'll work with you to put together a plan and a timeline.



Guidelines:

- We want to identify what help is needed now, so we can plan accordingly.
- We can't pay for "the thing" itself (e.g., the installation of a new culvert or retention basin), but **we can help you move a project forward by developing technical information.**
- Your community must be invested in moving a project forward.



Previous TA Projects

KDA Completed two Technical Assistance Projects for Wyandotte County

26th and Miami Ave Flood Reduction Analysis

65th and Kansas Ave Flood Reduction Analysis

- Is there interest in moving forward with any of the identified solutions?
- Are there any additional needs to move a project forward?
- Note that KDEM has adjusted their process and now requires an electronic notice of intent (NOI) submission form by the end of June for project solicitation.

Next Steps and Your Role

Project Timeline

Kick-off Meeting and Initial Community Feedback:
[TODAY!]

Discovery Meeting:
[~ September 2024]

- *Provide feedback on the draft mapping?*
- *Provide feedback on your community's needs?*
- *What additional flood data do you have available?*
- *Revisit flood risk reduction steps you are considering and how we may be able to help!*

Data Development Work:

TBD Based on Need and Community Feedback

No current timeline for regulatory mapping update

Completing state-wide coverage of 2D models



What Should You Do Next?

Initial Feedback on Flooding

- Provide locations of known flooding issues on the web map.
- Identify locations where effective mapping is inadequate
- If there are others in your community who you think we should talk to about historical flooding, please let us know.

Project Kickoff Survey

You will receive this in a follow-up email, please fill out and return.

Consider Flood Risk Reduction Projects

If you have any additional needs or concerns, please let us know! If possible, we'd like to help.



Key Takeaways

Your involvement in this process will result in better flood information for your community

While we are working in your community, we also want to help you with your work to reduce flood risk

We aren't planning new regulatory products at this time

***DON'T HESITATE TO CALL,
WE ARE HERE TO HELP***



***We Will Keep
You Informed:***

Project updates will come by email

- When important milestones are reached
- When action is necessary (reminders)

Future Meetings:

- Discovery Meeting
 - Part of BLE Project
 - Fall 2024
- Future Data Development Project Discussions
(If warranted)

Resources

Online Project Information

Project Website

- Meeting Presentations, Reports and any other relevant information
- <https://agriculture.ks.gov/divisions-programs/dwr/floodplain/mapping/mapping-projects/Wyandotte-enhanced-ble-project>

Web Review Map <https://gis2.kda.ks.gov/gis/wyandotte/>

- Provide comments on areas impacted by past floods, community needs, etc.
- Review of BLE data, once available
- This link will not be a public facing link during BLE

Story Maps

- “Floodplain Current”: Mapping Process ‘Nuts and Bolts’



BFE Portal

For Zone A floodplains, you can request BFE data. Keep in mind, BFE data is subject to change.

A screenshot of the "Kansas Base Flood Elevation Portal" registration form. The page has a light blue header with the Kansas Department of Agriculture logo and the text "Kansas Base Flood Elevation Portal". Below the header are three navigation buttons: "Home", "About", and "Help". The main content area is titled "Portal Registration" and contains a series of input fields for user information: "First Name", "Last Name", "User name", "Title", "Phone", "Email Address", "Address", "City", "Zip", and "State". The "State" field is a dropdown menu currently set to "Kansas". At the bottom right of the form is a yellow "Register" button.

Kansas Kansas Base Flood Elevation Portal
Department of Agriculture

Home About Help

Portal Registration

First Name

Last Name

User name

Title

Phone

Email Address

Address

City

Zip

State

Register



Contact Information

Tara Lanzrath, CFM
Tara.Lanzrath@ks.gov
D: 785-296-2513
State NFIP Coordinator

William Pace, CFM
William.Pace@ks.gov
D: 785-296-5440
Floodplain Mapping Specialist

Dawn Livingston
Dawn.Livingston@fema.dhs.gov
D: 816-283-7055
*Regional Project Officer,
FEMA Region 7*

Joanna Rohlf, CFM
Joanna.Rohlf@ks.gov
D: 785-296-7769
Floodplain Mapping Coordinator

Cheyenne Sun Eagle, CFM
Cheyenne.suneagle@ks.gov
D: 785-296-0854
NFIP Specialist

Keegan Schwartz
Keegan.schwartz@ks.gov
D: 785-296-4622
Floodplain Outreach Specialist

Maria Neeland, PE, CFM
mneeland@benesch.com
D: 785-320-4827
Project Manager, Benesch

Any Questions?

Interactive Map Review and Discussion

Web Map Link:
<https://gis2.kda.ks.gov/gis/wyandotte/>