



**NOXIOUS WEED DEPARTMENT**

**2021 ANNUAL REPORT**

# Annual Noxious Weed Eradication Progress Report 2021

as required by KSA 2-1316



Riley County Noxious Weed Department

Noxious Weed Supervisor:

**Michael Boller**

### Noxious Weed Department Personnel

Name	Job Title	% Time Spent on Noxious Weeds	Weed Director Salary
Michael Boller	Director	50	[REDACTED]
John Reves	Roadside Maintenance Technicia	100	
Justin Brenner	HHW Facility Mgr.	0	
Lori Hanson	Administrative Clerk	75	
Ryan Ascher	Commercial Pesticide Applicator	100	
Vaughn Powell	Commercial Pesticide Applicator	100	

### Financial Summary - Noxious Weed Fund

	Amount
Mil levy for 2021	0
County valuation for 2021	\$0.00
Beginning Budget Balance for 2021	\$684,674.00

#### Revenues

Chemical Sale	\$40,935.25
Equipment	\$13,406.00
Labor Income	\$46,934.99
Sales Tax Payable	\$107.19
<b>Total Revenue</b>	<b>\$101,383.43</b>

#### Expenditures

Capital Outlay	\$5,725.00
Chemical Purchase	\$74,178.60
Commodities	\$15,732.82
Contractual Services	\$94,120.22
Personnel Services	\$451,960.84
<b>Total Expenditures</b>	<b>\$641,717.48</b>
<b>Ending Budget Balance</b>	<b>\$42,956.52</b>

Carryover to next year's budget for 2021 to 2022

### Capital Outlay Fund

	Amount
Beginning Balance	\$0.00
Receipts	\$0.00
Expenditures	\$0.00
<b>Ending Balance</b>	<b>\$0.00</b>

# Annual Noxious Weed Eradication Progress Report

## Riley County Noxious Weed Department

Year  
2021



### Estimated Acreage of Noxious Weeds

Noxious Weed	Private	County	Township	State	Federal	City	Total
Field Bindweed	3600.0	525.0	460.0	380.0		30.0	4995.0
Johnsongrass	280.0	30.0	20.0	50.0		10.0	390.0
Musk Thistle	7500.0	280.0	140.0	35.0		5.0	7960.0
Sericea Lespedeza	1300.0	10.0	10.0	25.0		20.0	1365.0
<b>Totals</b>	<b>12680.0</b>	<b>845.0</b>	<b>630.0</b>	<b>490.0</b>		<b>65.0</b>	<b>14710.0</b>

### Estimated Acreage of Noxious Weed on Private Land sub-section

Noxious Weed	Wheat	Corn	Soybean	Grain	CRP	Pasture	Other	Fallow	Non-Ag	Total
Field Bindweed	6.0	2.0			200.0	3300.0	92.0			3600.0
Johnsongrass					80.0	200.0				280.0
Musk Thistle					400.0	7000.0	100.0			7500.0
Sericea Lespedeza					200.0	1000.0	100.0			1300.0
<b>Totals</b>	<b>6.0</b>	<b>2.0</b>			<b>880.0</b>	<b>11500.0</b>	<b>292.0</b>			<b>12680.0</b>

Weeds declared Noxious by the County:      Multiflora Rose       Bull Thistle

### Herbicide Disbursement Summary

Chemical	Purchase Price	Cost Share Price	Total Disbursed
2, 4-dichlorophenoxyacetic acid, choline salt	\$24.96	\$0.00	42.250 gal
2-4 D Amine/Cornbelt	\$11.52	\$9.26	880.750 gal
2-4 D Ester/Cornbelt	\$16.32	\$13.20	550.000 gal
2-4 D Ester/Tenkoz	\$16.08	\$12.80	5.000 gal
Fluroxypyr- meotvl/Tricolovr-butotvl	\$137.92	\$110.24	50.000 gal
GLYPHOSATE	\$21.60	\$17.28	30.500 gal
GLYPHOSATE/Tenkoz	\$13.44	\$10.88	82.250 gal
Imazapic, ammonium salt	\$1.12	\$0.00	140.000 oz
Metsulforam-methyl	\$2.79	\$2.23	941.000 oz
PICLORAM	\$48.80	\$39.04	407.375 gal

### Enforcement Summary

Warning Notices	9
Legal Notices	0
Court Cases	0

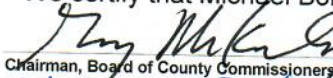
Diversion Agreements	0
Accounts to Tax Roll	0
Meetings Sponsored	0

Demonstration Plots	0
Feed and Hay Inspection	0
Publish General Notice	2

Enforcement Comments:

We certify this is a correct copy of the Riley County Noxious Weed Department Program for 2021

We certify that Michael Boller is employed as Riley County Noxious Weed Department Director for 2022

  
Chairman, Board of County Commissioners

2-3-22  
Date

County Commissioner

Date

  
County Commissioner

2-3-22  
Date

County Commissioner

Date

  
County Commissioner

2-3-22  
Date

  
County Noxious Weed Director

2-1-2022  
Date

# Annual Noxious Weed Eradication Progress Report Treatment Summary for Noxious Weeds

## Field Bindweed

## Riley County Noxious Weed Department

2021 ★

Enforcement	January	February	March	April	May	June	July	August	September	October	November	December	Totals
Warning Notice													0
Legal Notice													0
Court Cases													0
Diversion Agreements													0

Acreeage Treated	January	February	March	April	May	June	July	August	September	October	November	December	Totals
City							5.0						5.0
County				80.0	2.5	16.5	17.5						260.5
Private				20.0	45.0	87.5	200.0	7.5		136.0			360.0
Private Other							10.0	210.0					220.0
Private Pasture								65.0					1215.0
Private Wheat			30.0	90.0	645.0	315.0	37.5						10.0
State					10.0								92.0
Township					90.0	14.0	74.0	18.0					122.0
<b>Total Acreeage</b>	<b>20.0</b>		<b>30.0</b>	<b>190.0</b>	<b>792.5</b>	<b>433.0</b>	<b>362.0</b>	<b>300.5</b>	<b>8.0</b>	<b>148.5</b>			<b>2284.5</b>

Approved Herbicides and Methods	January	February	March	April	May	June	July	August	September	October	November	December	Totals
2-4 D AMINE			20.0	70.0	45.0	80.0	225.0	275.0					725.0
2-4 D LV ESTER				20.0	5.0	10.0	10.0						45.0
Freelexx 4#					22.5	4.5	35.0						62.0
GLYPHOSATE			10.0		80.0		13.0	7.5					133.0
GLYPHOSATE + 2,4-D Amine						2.5	11.0						13.5
PICLORAM					160.0	200.0							360.0
PICLORAM + 2,4-D Amine					480.0	116.0	68.0	18.0					906.0
PICLORAM + 2,4-D LV ESTER				20.0		20.0							40.0
<b>Total Acreeage</b>	<b>20.0</b>		<b>30.0</b>	<b>190.0</b>	<b>792.5</b>	<b>433.0</b>	<b>362.0</b>	<b>300.5</b>	<b>8.0</b>	<b>148.5</b>			<b>2284.5</b>

# Annual Noxious Weed Eradication Progress Report Treatment Summary for Noxious Weeds

Johnsongrass

Riley County Noxious Weed Department

2021 ★

	January	February	March	April	May	June	July	August	September	October	November	December:	Totals
Enforcement													
Warning Notice													0
Legal Notice													0
Court Cases													0
Diversion Agreements													0

Acreage Treated	January	February	March	April	May	June	July	August	September	October	November	December:	Totals
County							3.0						4.0
Private							2.5	2.5					5.0
Private Other							3.8	2.5					6.3
Private Pasture							2.5	12.5					15.0
State							14.0						14.0
Township							1.0						1.0
<b>Total Acreage</b>							<b>26.8</b>	<b>17.5</b>	<b>1.0</b>				<b>45.3</b>

Approved Herbicides and Methods	January	February	March	April	May	June	July	August	September	October	November	December:	Totals
GLYPHOSATE							12.8	17.5					31.3
PLATEAU							14.0						14.0
<b>Total Acreage</b>							<b>26.8</b>	<b>17.5</b>	<b>1.0</b>				<b>45.3</b>

# Annual Noxious Weed Eradication Progress Report Treatment Summary for Noxious Weeds

## Riley County Noxious Weed Department

2021 ★

### Musk Thistle

	January	February	March	April	May	June	July	August	September	October	November	December	Totals
Enforcement													
Warning Notice													0
Legal Notice													0
Court Cases													0
Diversion Agreements													0

Acreage Treated	January	February	March	April	May	June	July	August	September	October	November	December	Totals
County				80.0	2.5	19.0							211.5
Private				50.0	505.0	75.0		27.5	20.0	110.0			677.5
Private Other					120.0	30.0	5.0	90.0	2.5				257.5
Private Pasture	20.0		185.0	30.0	2805.0	1195.0	360.0	2.5		10.0			4607.5
Township					90.0	14.0							104.0
<b>Total Acreage</b>	<b>20.0</b>		<b>185.0</b>	<b>160.0</b>	<b>3522.5</b>	<b>1333.0</b>	<b>365.0</b>	<b>120.0</b>	<b>22.5</b>	<b>120.0</b>		<b>10.0</b>	<b>5858.0</b>

Approved Herbicides and Methods	January	February	March	April	May	June	July	August	September	October	November	December	Totals
2,4-D AMINE			65.0	40.0	205.0	520.0	15.0	115.0					980.0
2,4-LV ESTER			120.0	30.0	135.0		60.0		20.0	10.0			365.0
Freelexx 4#					22.5								22.5
GLYPHOSATE	20.0				40.0		10.0	5.0	2.5				77.5
PICLORAM					800.0	360.0	280.0						1440.0
PICLORAM + 2,4-D Amine				80.0	720.0	353.0				110.0			1263.0
PICLORAM + 2,4-D LV ESTER				10.0	1600.0	100.0							1710.0
<b>Total Acreage</b>	<b>20.0</b>		<b>185.0</b>	<b>160.0</b>	<b>3522.5</b>	<b>1333.0</b>	<b>365.0</b>	<b>120.0</b>	<b>22.5</b>	<b>120.0</b>		<b>10.0</b>	<b>5858.0</b>

# Annual Noxious Weed Eradication Progress Report Treatment Summary for Noxious Weeds

Riley County Noxious Weed Department

Sericea Lespedeza

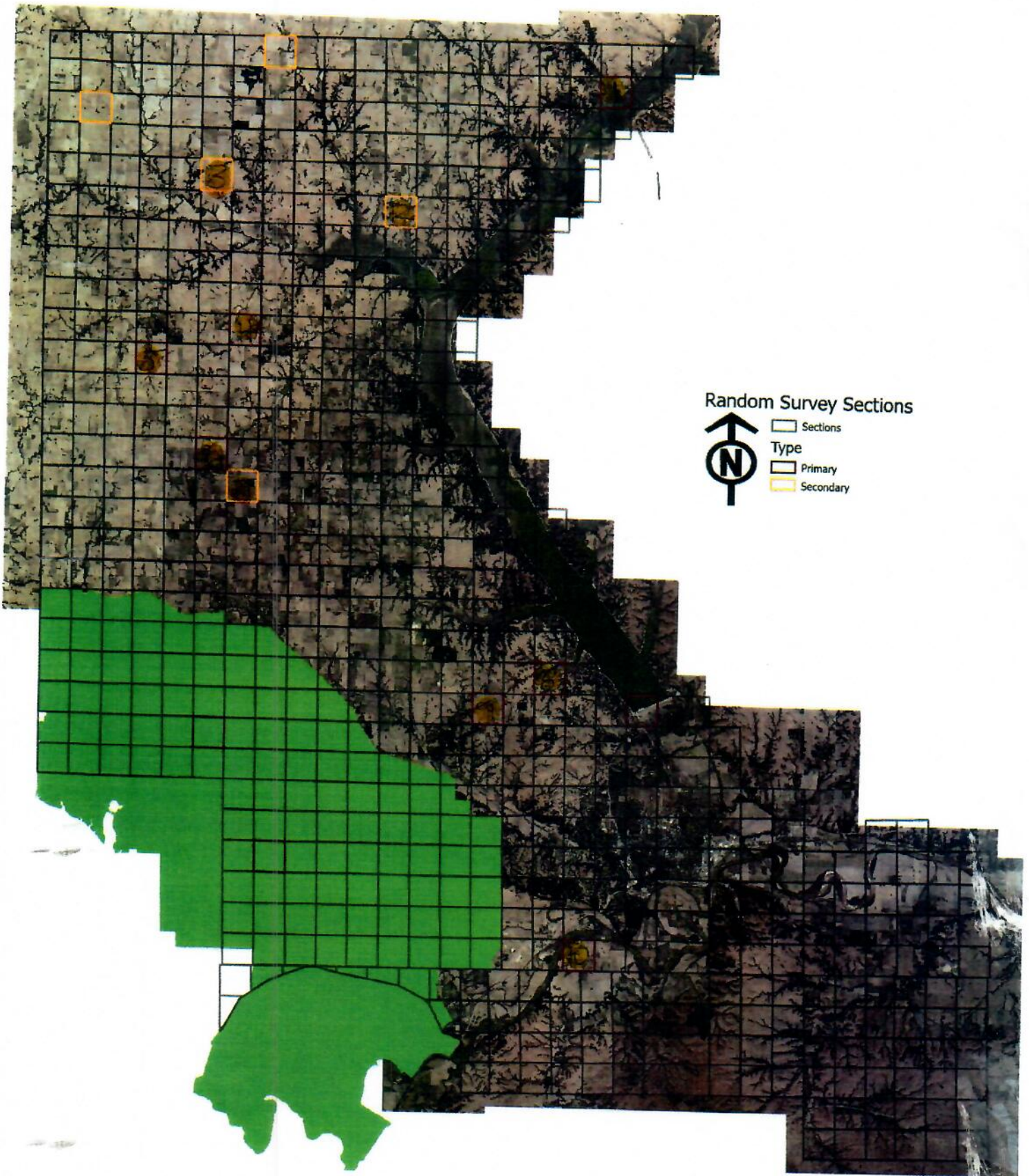
2021 ★

	January	February	March	April	May	June	July	August	September	October	November	December	Totals
Enforcement													
Warning Notice													0
Legal Notice													0
Court Cases													0
Diversion Agreements													0

Acreage Treated	January	February	March	April	May	June	July	August	September	October	November	December	Totals
County													14.0
Private					88.0		8.0	34.5	712.0	40.0			882.5
Private CRP						320.0							320.0
Private Other							8.0	8.0	48.0	8.0			72.0
Private Pasture			80.0		992.1	2696.1	722.5	120.0	184.0	56.0			4850.7
State									7.0				7.0
<b>Total Acreage</b>			<b>80.0</b>		<b>1080.1</b>	<b>3016.1</b>	<b>738.5</b>	<b>162.5</b>	<b>965.0</b>	<b>104.0</b>			<b>6146.2</b>

Approved Herbicides and Methods	January	February	March	April	May	June	July	August	September	October	November	December	Totals
Fluroxypyr-mepyt/Triclopyr-butotyl			80.0		960.1	2880.1	640.0		640.0				5200.2
GLYPHOSATE							2.5	2.5					5.0
METSULFORAM METHYL					120.0	136.0	96.0	160.0	325.0	104.0			941.0
<b>Total Acreage</b>			<b>80.0</b>		<b>1080.1</b>	<b>3016.1</b>	<b>738.5</b>	<b>162.5</b>	<b>965.0</b>	<b>104.0</b>			<b>6146.2</b>

# Random Survey Sections-2021





2021 Survey Locations:

- 1) Vilander Road / Dial Road
- 2) Fancy Creek/Vawter Road
- 3) Fancy Creek/ Ober Road
- 4) Crooked Creek/Ober Road
- 5) Walsburg Road/Alert Road
- 6) Alenbic/Sherman Road
- 7) Crooked Creek/ Fairview Church Road
- 8) West 59<sup>th</sup>/Harbour Hills
- 9) N 52<sup>nd</sup>/West 59<sup>th</sup>
- 10) Charlson Road/Ft Riley Blvd

- Note: Locations 2,3 and 7 are alternate locations as others originals were on the lake or Ft Riley Property