

# ENTOMOLOGICAL NEWS



KANSAS DEPARTMENT OF AGRICULTURE – PLANT PROTECTION AND WEED CONTROL

## NOTABLE NON-TARGET COLLECTIONS 2015

### Megacephala virginica-Virginia Tiger Beetle

Our Pathway Survey yielded some non-invasive native insects that are worth noting, the first being *Megacephala virginica*.



Kansas Department of Agriculture, Bugwood.org

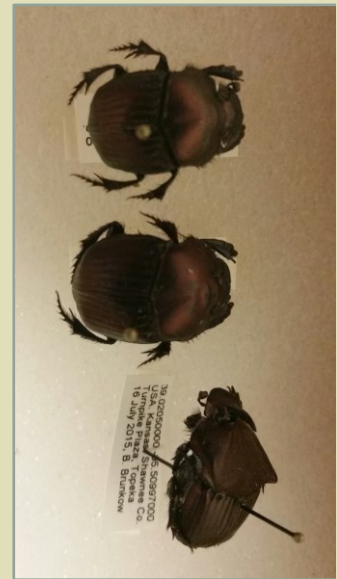
The Virginia tiger beetle is a predatory beetle, complete with sickle shaped mandible. It is notable that the genus *Megacephala* are largely tropical beetles, with only a few species found in the United States. The Virginia tiger beetle is flightless and hunts at night, feeding on small insects. During the Pathway Survey we collected nearly 30 of the beetles, during July and August.

### Phanaeus vindex-Splendid Dung Beetle

Males and females work in pairs to dig burrows beneath animal dung. They move some of the dung down into the tunnel, where the female lays her eggs in it. The grubs feed on the excrement for several instars until pupating. This species is sexually dimorphic, meaning the two sexes have different appearances. The male splendid dung beetle has a large black horn on top of the head, which curves back over the thorax. The horn is lacking in females. Our specimens were collected in July and August from pitfall traps,



### Geotrupes sp. – Earth Boring Dung Beetles



Not as brilliantly colored as the splendid dung beetle. The beetle is weakly lustrous, appearing greenish or coppery.

The *Geotrupes* dung beetles are also dung feeders and work as a team to bury dung to lay their eggs in it. This group of beetles is again sexually dimorphic, with the males having horns.

Our collections were made in July, from pitfall traps.