



**AECOM**



**FEMA**

# Harper County, KS Flood Risk Review Meeting

October 12, 2021

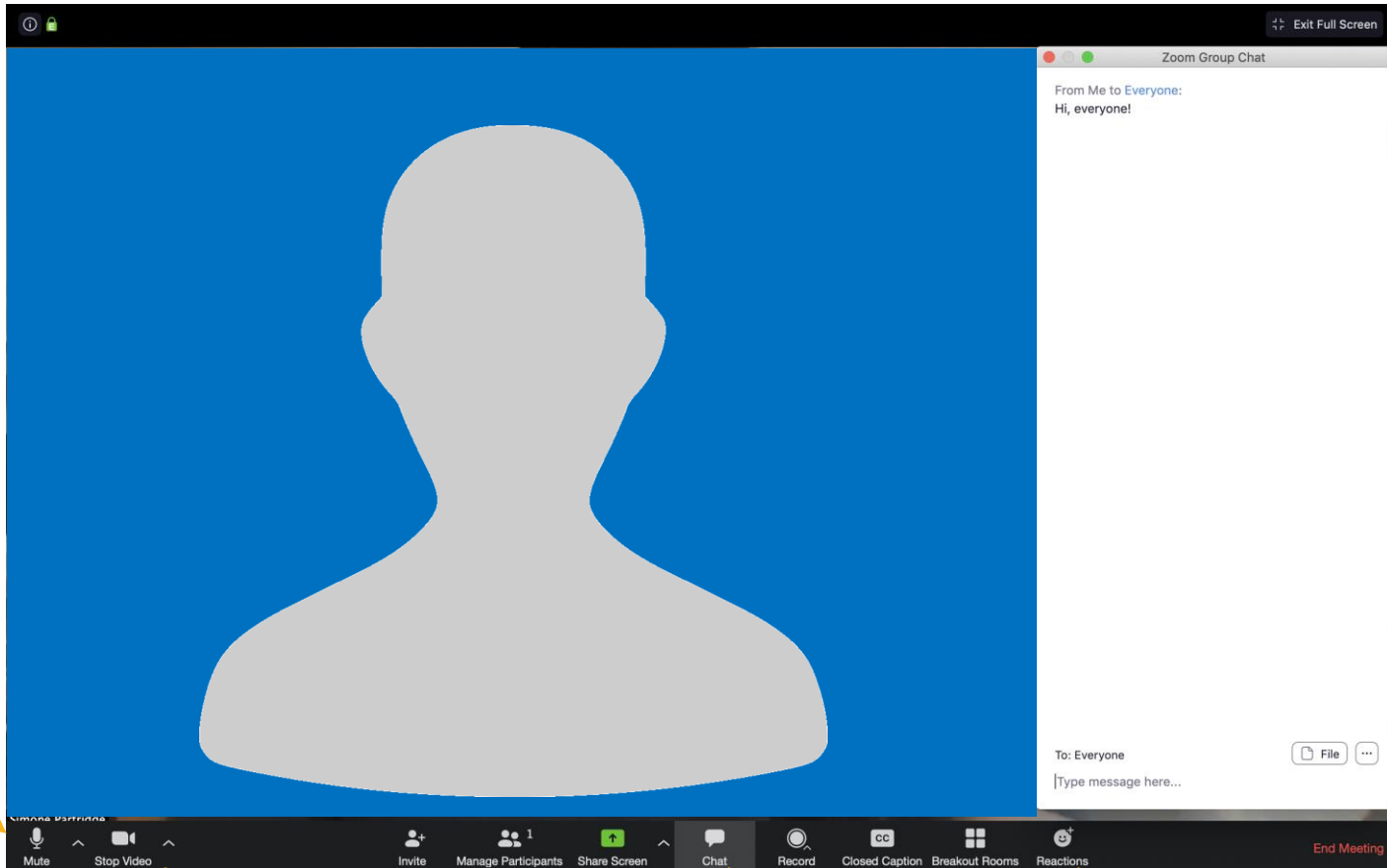
*While we are waiting, please enter your name and community in the chat box!*

# THANK YOU!

*We appreciate the time you are giving to this work  
and we want to use it wisely.*

*Your feedback at this point in the project is **very important.***

# Zoom Features



*Mute /  
Unmute*

*Start your Video*

*Use the Chat  
Feature*

*Reactions*



# Rules of the Road

- Attendees will be muted during the presentation to help eliminate background noise.
- Use the chat to ask questions during the presentation! We will pause for questions at various stopping points and have several poll questions.
- If you want to share your video, please do!
- For technical difficulties, send a private chat to Joanna Rohlf; or email [Joanna.Rohlf@ks.gov](mailto:Joanna.Rohlf@ks.gov)
- We'll be recording this webinar for those who aren't able to attend today.

# Intros

## Kansas Department of Agriculture

**Tara Lanzrath, CFM**  
Floodplain Mapping Coordinator

**Joanna Rohlf, CFM**  
Floodplain Mapping Specialist

**William Pace, CFM**  
Floodplain Mapping Specialist

**Steve Samuelson, CFM**  
State NFIP Coordinator

**Cheyenne Sun Eagle**  
NFIP Specialist

**FEMA – Region VII**

**Andy Megrail – Regional Project Officer**



## AECOM Technical Services Inc.

**Daniel Curley - Project Manager**

**Hayden Edwards – Project Engineer**

# Why We Are Here



# Today's Goals

- Review how we developed your flood risk data
- Get your feedback on the flood risk data
- Review future steps

**Main Takeaway:** We want your feedback while your map is still in draft form and there is time to incorporate feedback

# First, a brief recap



Over the past 30 years, flooding has been more dangerous in the U.S. than any other weather-related problem. To minimize flood damage, we must first understand where the risk is.



# Why Have Floodplain Maps?

- Understand the risk so you can make informed planning decisions and avoid future flood damage in your community.
- Determine where flood insurance is needed.
  - Flood Insurance Rate Map (FIRM)
- Provide the basis for updating community floodplain management ordinances.
  - These ordinances are your tool for reducing your community's vulnerability to flood risk.

# FEMA Floodplain Mapping Program



- Risk Mapping Assessment and Planning (Risk MAP)
- Supports the National Flood Insurance Program (NFIP); performed on a watershed basis.
- Consists of both Regulatory and Non-Regulatory Products.
- Through Risk MAP, we provide updated floodplain maps, as well as other (free!) data and tools that can help you plan to reduce your community's risk.

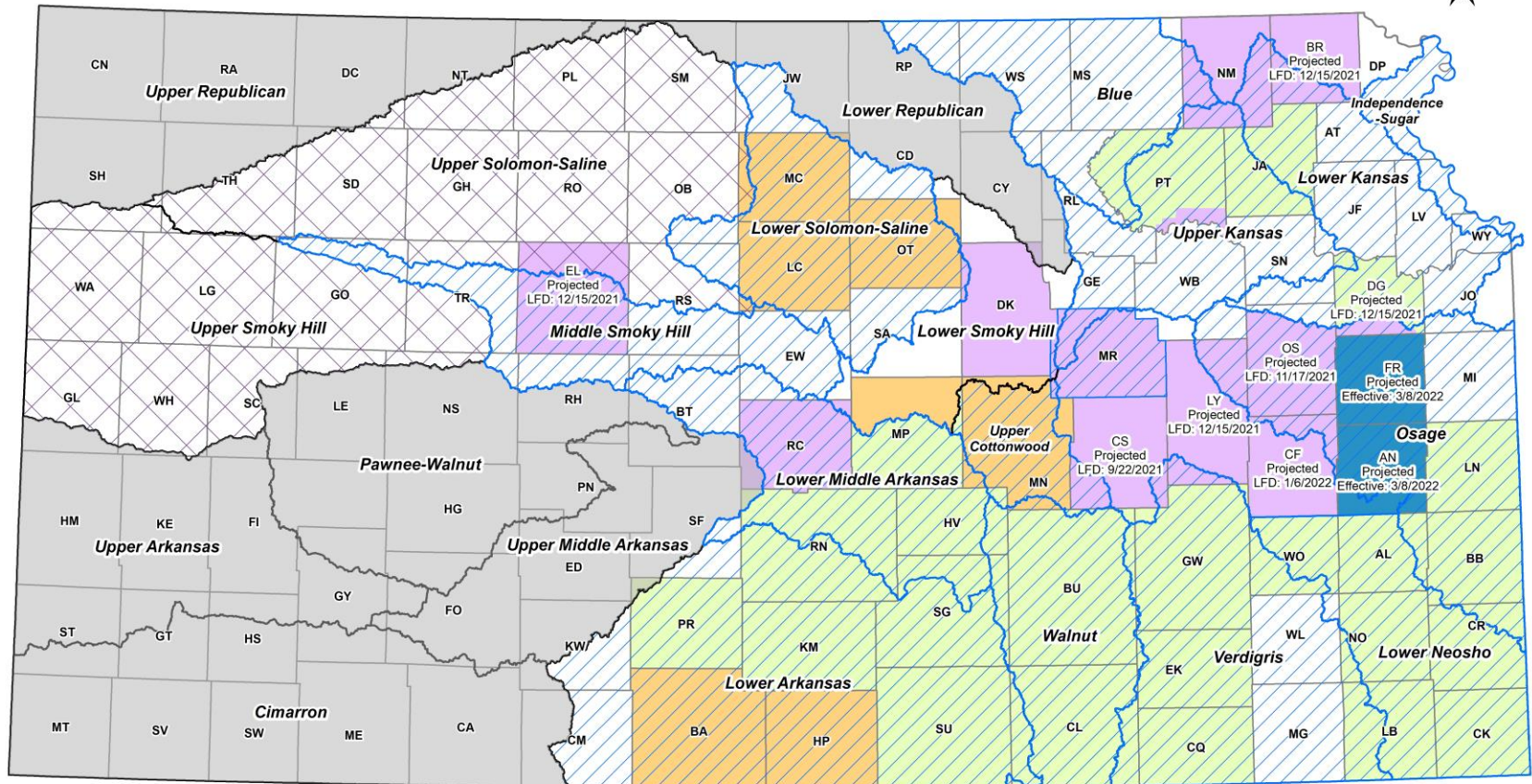
**RiskMAP**  
Increasing Resilience Together

# How Did We Get Here?

- Base Level Engineering (BLE) - 2020
  - Gives us early insight into your flood risk
  - Kick off Meeting held on March 5, 2019
  - Discovery and Initial Map Review Meeting held on February 26<sup>th</sup> and 27<sup>th</sup>, 2020
- Data Development – 2021
  - Enhance the engineering analysis
  - Develop regulatory draft floodplain maps
  - Develop Flood Insurance Study
  - Develop flood risk data tools for your community

# We Do This Work Across Kansas

## Current Floodplain Mapping Projects and Custom Watersheds



September 14, 2021

### Project Status

- In Development
- Draft
- Preliminary
- LFD

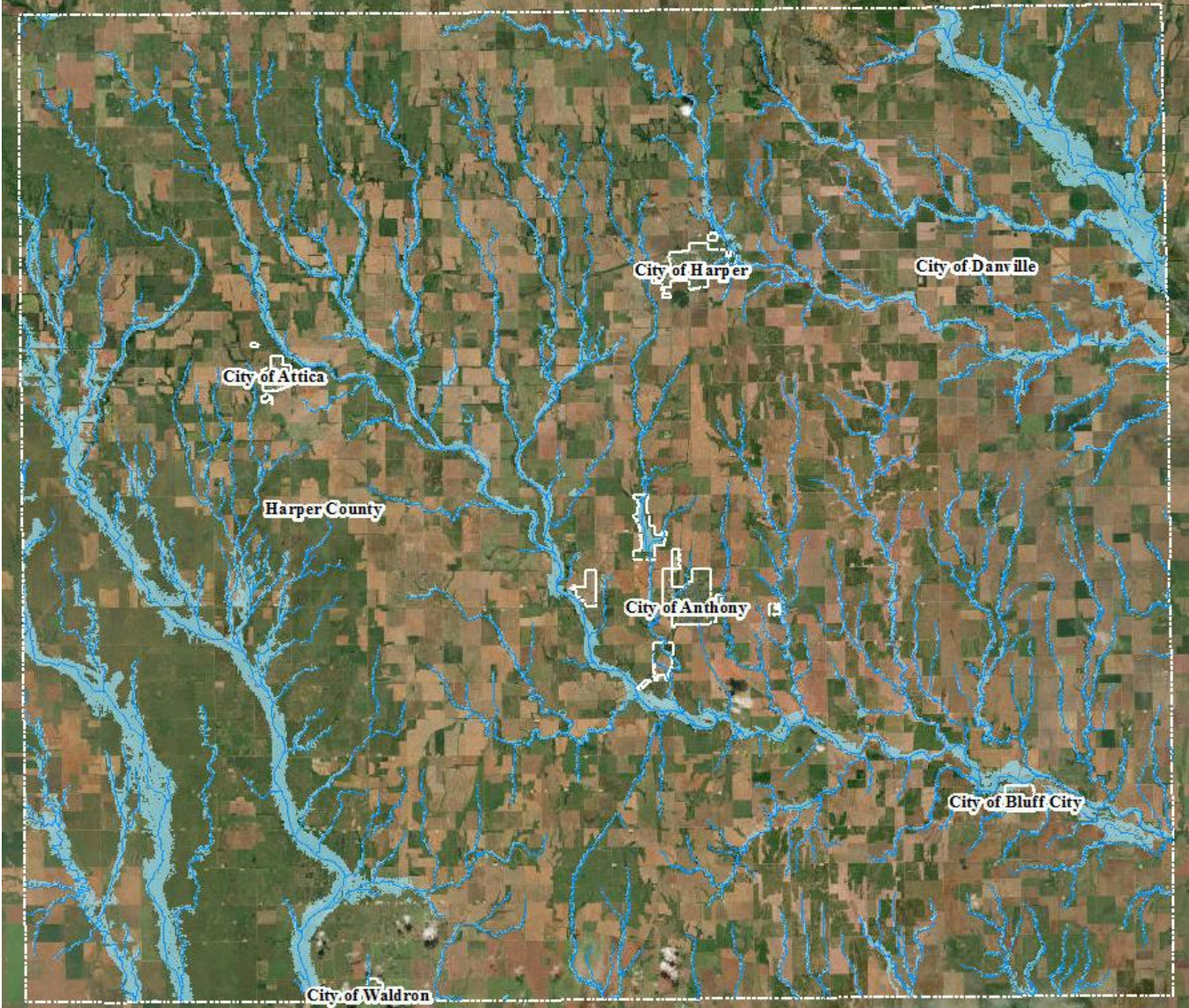
### Watershed Projects

- Custom Watersheds (labeled)
- FY19 BLE\* - In Progress
- BLE Projects - Data Available
- FY20 BLE - In Progress

\*Not all watershed areas will be included.  
Please check with KDA for details.



# Harper County- Mapping Update



**Key**

 Zone A

# Definitions



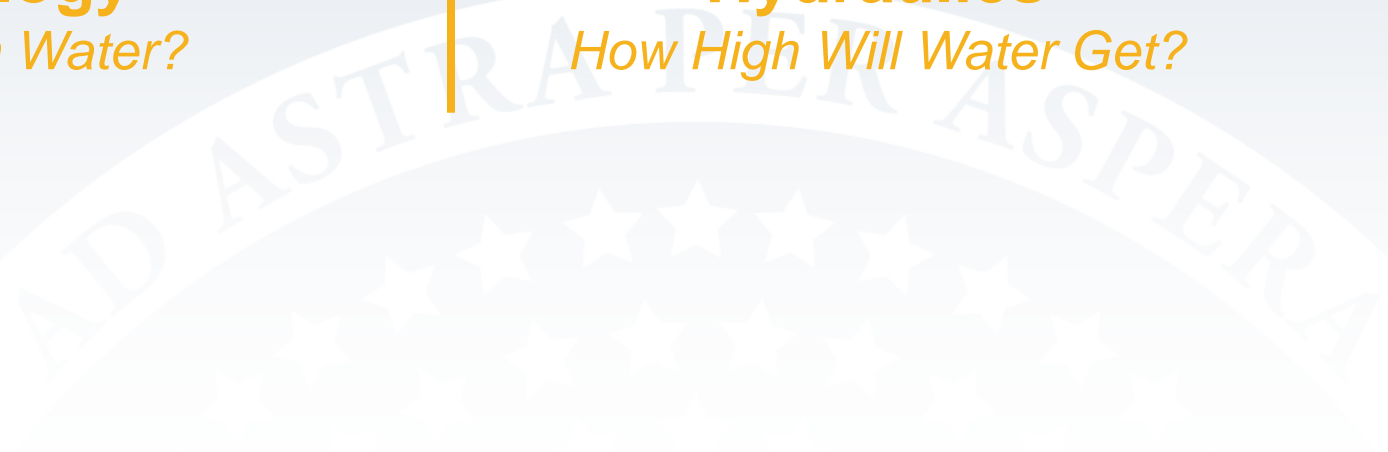
## **Hydrology**

*How Much Water?*



## **Hydraulics**

*How High Will Water Get?*



# Information Gathered

- Information gathered during the BLE Phase of the project was incorporated and/or used for Zone A floodplain mapping.
  - Anthony Lake Dam – local elevation survey data used
  - Wildcat Creek Dam – switched from public to private dam



# Map Refinements

- Updates to the BLE Mapping Based on Technical Review.
  - Addition of Limit of Study terminus lines at upstream limits.
  - Connected Zone A floodplain at road crossings
  - 0.2% (500yr) Floodplain filtered to 1 square mile drainage areas, fluvial flooding and depths greater than 1 foot.





# Example of Zone A



# Anthony

City of Anthony

Harper County



# Bluff City

Harper County

City of Bluff City

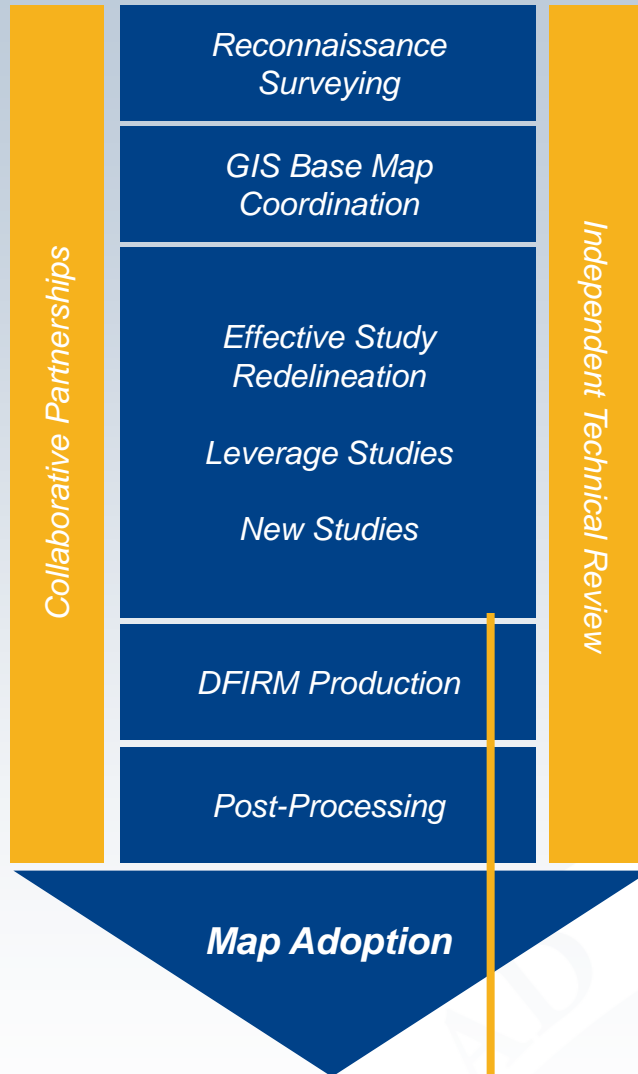
An aerial photograph of a rural area in Harper County, Tennessee. The image shows a mix of brown and green agricultural fields, some with distinct furrows. A light blue river or stream winds through the landscape. A white dashed rectangular box highlights a central area labeled "City of Bluff City". This area contains a small cluster of buildings, a parking lot, and a few trees. The surrounding area is mostly open fields with some scattered trees and utility lines.

# Harper



City of Harper

Harper County



## Project Tasks

1. Discovery
2. Base Map Preparation
3. Survey and Topography *(if applicable)*
4. New Studies *(if applicable)*
5. DFIRM and FIS Production
6. Post-Preliminary

Finishing this phase: data development

# Your Maps Undergo Significant Review



- AECOM DART Review
  - Engineering reviewed by separate AECOM QA/QC Team
- Independent Technical Review (ITR)
  - Third party review of engineering
  - Wood Environment and Infrastructure Solutions, Inc
- KDA Review
  - Visual review
  - Eye test
  - Identify impact of the map
- FEMA Review
  - Formal quality review process of regulatory products
- Your Review!
  - Community Review
  - Public Review

# Community Map Review



ASPERA

# Your Map Review

## This is your opportunity to have impact!

- We want to agree on what your map looks like before Preliminary Status
  - That's when we enter the regulatory map-making phase, and it's harder to change things
- A web map has been provided for review
  - <https://gis2.kda.ks.gov/gis/harper/>
  - FTP GIS Data Download:  
<https://sftp.kda.ks.gov/public/folder/5i9STWQQ-0KDjJWK4JXx9w/Harper>
- This is where **YOU** look out for **YOU: please provide your comments by November 12, 2021**





# Harper County Floodplain Update

Draft Floodplains - Updated 10/5/2021

Legend

### Floodplain Data

Harper County Streams

Draft Special Flood Hazard Area

■ 1% Annual Chance (100-year)

Layers (Click to expand)

- Comments ☰
- Floodplain Data ☰
  - Harper County Streams
  - Lower Arkansas Custom Watershed BLE
  - Approximate Base Flood Elevation (BFE)
  - Anthony Lake Current Effective FIRM
  - Harper Current Effective FIRM
  - Harper County Current Effective FIRM
  - Draft Special Flood Hazard Area
  - Draft Advisory Floodplains
- NG911 ☰

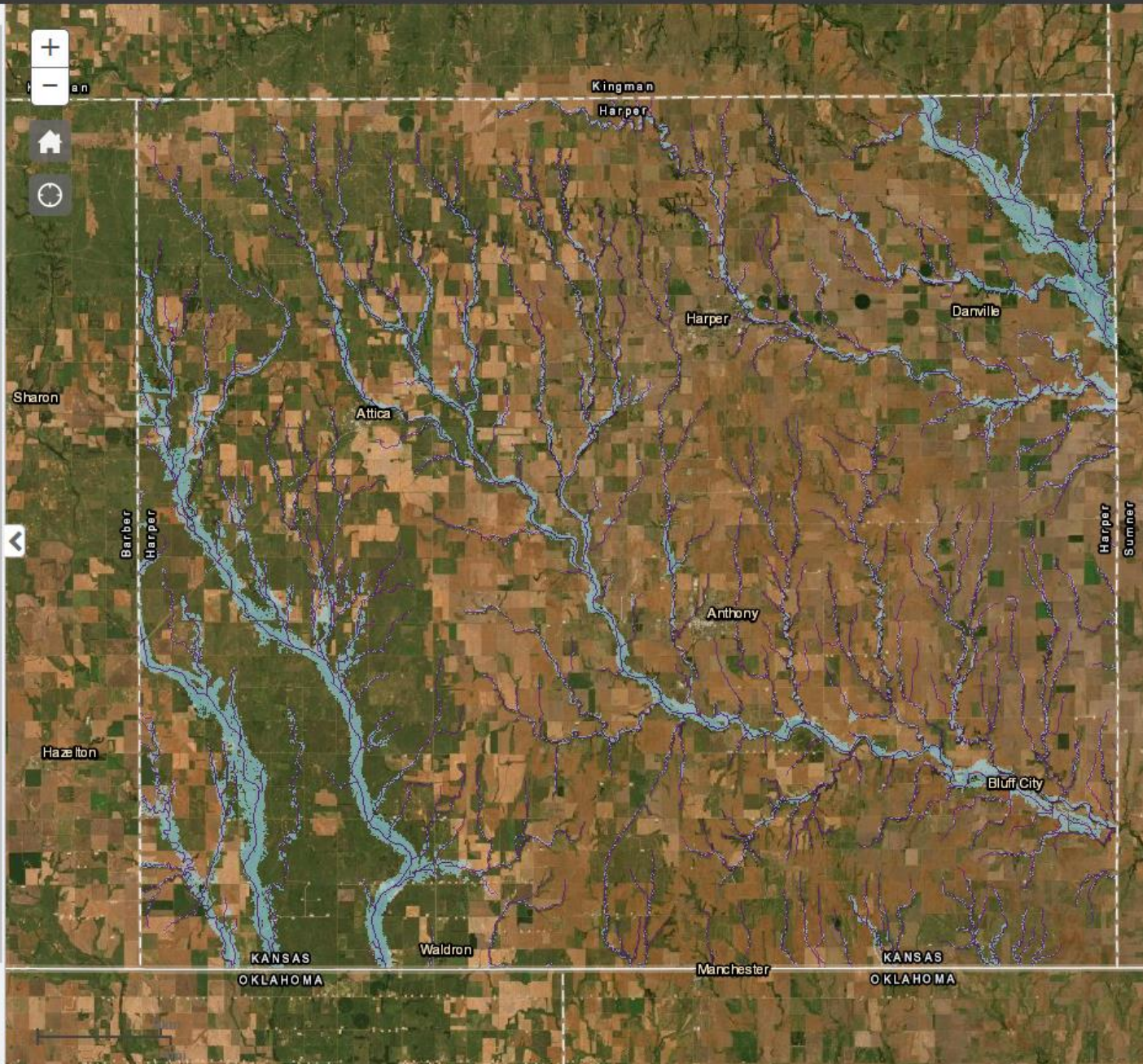
Editor

Leave Comment

Draw ↶

Measurement ↶

Print ↶



# Your Map Review



Recent construction (e.g., a new building development that incorporated fill or changes to roadways, bridges, or culverts)



High Water Marks showing past flooding impacts



Floodplain boundaries that align with your experience of large-scale flooding



Model stream extents (where streams begin and end)



Political boundaries, especially if there is a recent annexation



**AECOM**



**FEMA**

***IMPORTANT STEP:*** All community comments will be addressed/reviewed before doing a public review

# Your Residents Also Have the Opportunity to Review the Draft Data

- Can review and comment online, using same Review Web Map
- Will run for at least 30 days
- We will also hold an Open House
  - Typically consists of computer stations where public can discuss draft floodplains with KDA, engineers, mapping experts, and insurance specialists
  - Will adjust to virtual Open House, if needed
- We'll need your help notifying your residents and finding location
- Tentatively scheduled for November 2021





# Open Discussion

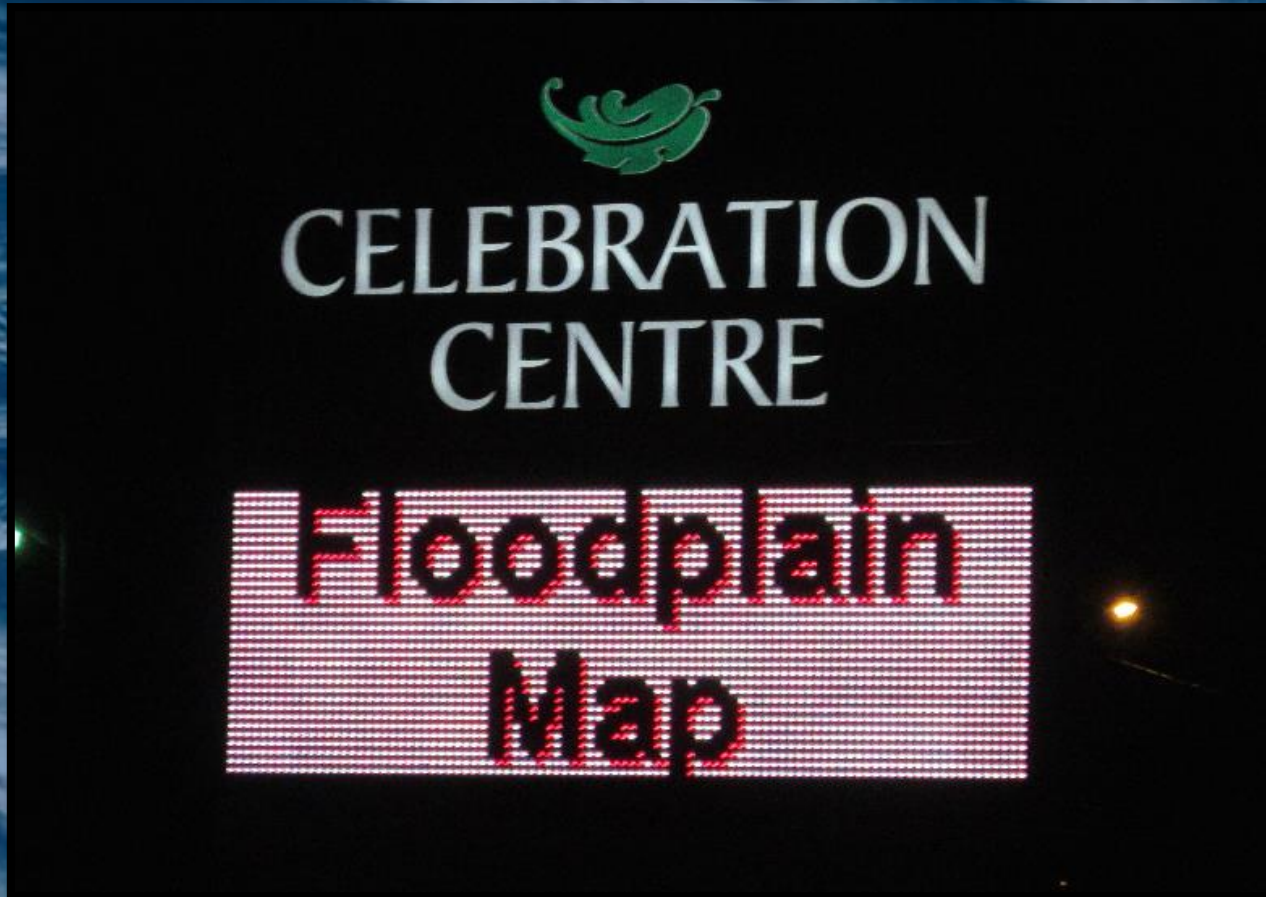
**Unmute your phones and  
let's talk about this.**

## **Our questions:**

- Do you think in-person or virtual Open House options would work for your community?
- Could you help promote an Open House?
- If so, how would you do that? Social media? Newsletters? Website posting? Direct mail?

***What are your questions?  
We know you have some...***

# Next Steps



# Timeline Review

- **Your Review**
  - Please get comments in by November 12, 2021
- **Public Open House**
  - Estimated: November 2021
- **Preliminary Map Distribution**
  - Estimated: January 2022
- **Preliminary DFIRM Community Coordination Meeting**
  - Estimated: March 2022
- **Appeal Period**
  - Estimated: August-November 2022
- **Letter of Final Determination**
  - Estimated: May 2023
- **Effective Maps**
  - Estimated: November 2023

**Where we still have flexibility to change the data**

**Where you have to follow a more formal process (with higher effort) to request any changes to the data**

# Your Next Steps

**Review your community's maps and comment on areas of concern AND/OR areas that look right.**

*There are a few ways to do this:*



**Lead the public outreach for your community**

We can help you target who most needs to know;  
but will need your help to lead the outreach effort

***Let us know if you need help or have any remaining questions!***





# Key Take-aways

*Floodplain Mapping Projects take time*

*Your involvement in this process will result in better flood information for your community*

*Get it right before Preliminary!*

**DON'T HESITATE TO CALL,  
WE ARE HERE TO HELP**

# Consider Joining the NFIP!



## Why join the NFIP?

- Property owners would be able to insure against flood losses
- Qualify for federal grants or loans for development
- Qualify for federal disaster assistance for damages caused by a flood
- Adoption of a floodplain management ordinance leads to smart development against flood risk

*Any questions?*

*Where to go for...*

INFEED



# Online Project Information

## – Project Website

- <https://agriculture.ks.gov/divisions-programs/dwr/floodplain/mapping/mapping-projects/lists/mapping-projects/lower-arkansas>
- Scoping Maps, Project Timeline, Meeting Presentations, Newsletters, Technical Reports, Web Review Map

## – Web Review Map

- <https://gis2.kda.ks.gov/gis/harper/>
- Draft Floodplain Review
- FTP GIS Data Download: <https://sftp.kda.ks.gov/public/folder/5i9STWQQ-0KDjJWK4JXx9w/Harper>

## – Story Maps

- Project Info
- “Floodplain Current”: Mapping Process ‘Nuts and Bolts’

# Base Flood Elevation Portal



## Kansas Base Flood Elevation Portal

[Home](#)

[About](#)

[Help](#)

### Portal Registration

First Name

Last Name

User name

Title

Phone

Email Address

Address

City

Zip

State

[Register](#)

**For Zone A floodplains, you can request BFE Data. Keep in mind that the data is still subject to change.**

# Contact Information



## KDA

**Tara Lanzrath, CFM**

[Tara.Lanzrath@ks.gov](mailto:Tara.Lanzrath@ks.gov)

D: 785-296-2513

M: 785-276-9359

Floodplain Mapping Coordinator

**Joanna Rohlf, CFM**

[Joanna.Rohlf@ks.gov](mailto:Joanna.Rohlf@ks.gov)

D: 785-296-7769

Floodplain Mapping Specialist

**William Pace, CFM**

[William.Pace@ks.gov](mailto:William.Pace@ks.gov)

D: 785-296-5440

Floodplain Mapping Specialist

**Steve Samuelson, CFM**

[Steve.Samuelson@ks.gov](mailto:Steve.Samuelson@ks.gov)

D: 785-296-4622

M: 785-221-3809

State NFIP Coordinator

**Cheyenne Sun Eagle**

[Cheyenne.suneagle@ks.gov](mailto:Cheyenne.suneagle@ks.gov)

D: 785-296-0854

NFIP Specialist

# Contact Information



## AECOM

**Daniel Curley**

[daniel.curley@aecom.com](mailto:daniel.curley@aecom.com)

D: 816-410-6376

Project Manager

**Hayden Edwards**

[hayden.edwards@aecom.com](mailto:hayden.edwards@aecom.com)

O: 816-360-4638

Engineer

## FEMA

**Andy Megrail, FAC-P/PM**

[Andy.Megrail@fema.dhs.gov](mailto:Andy.Megrail@fema.dhs.gov)

O: 816-283-7982

M: 816-807-3014

Regional Project Officer



**AECOM**



**FEMA**

***And now...***

*We are going to show you how  
to make comments and review  
your community's map*

***Any questions first?***