



AECOM



FEMA

Barber County, KS Flood Risk Review Meeting

October 13, 2021

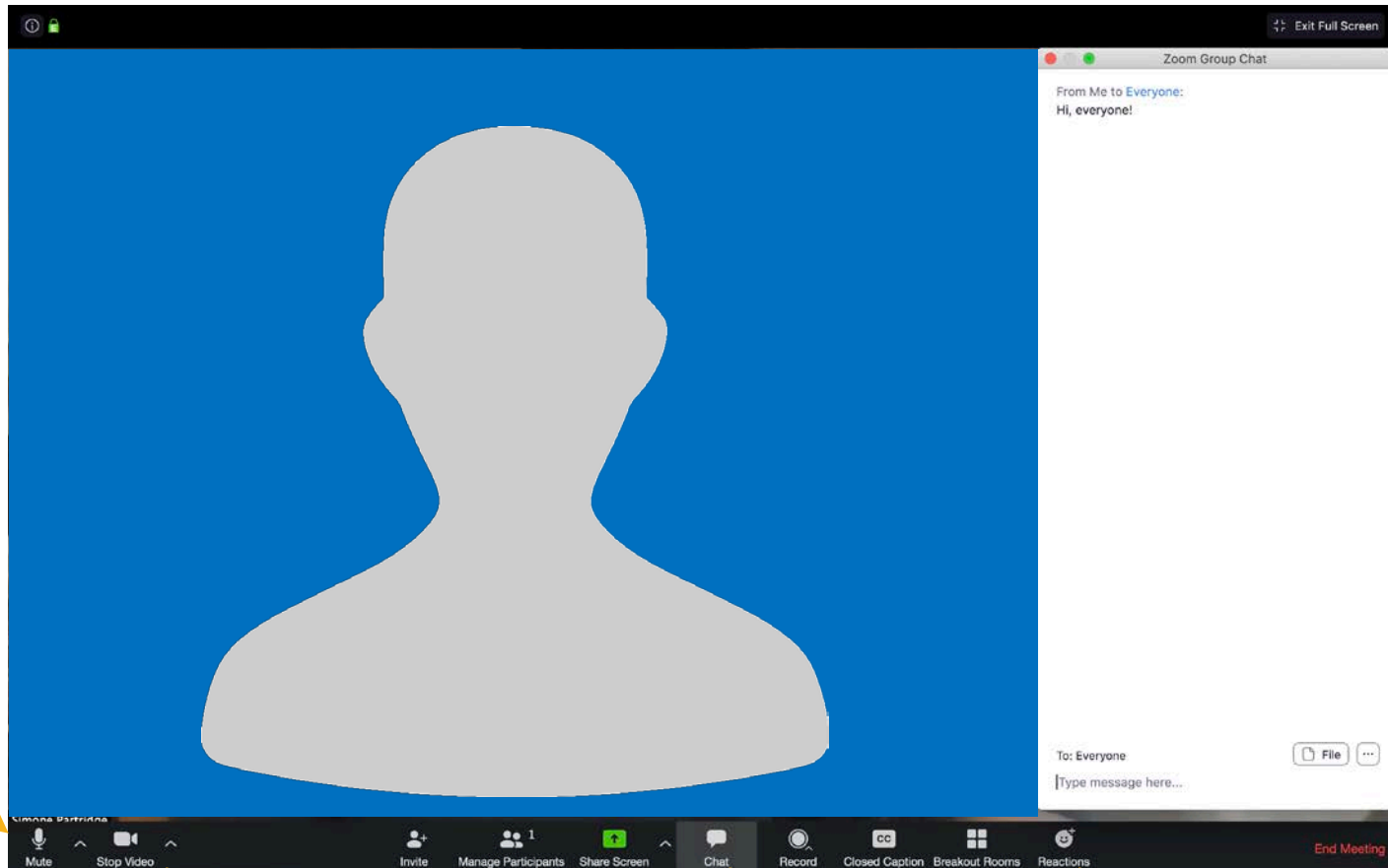
While we are waiting, please enter your name and community in the chat box!

THANK YOU!

*We appreciate the time you are giving to this work
and we want to use it wisely.*

*Your feedback at this point in the project is **very important**.*

Zoom Features



*Mute /
Unmute*

Start your Video

*Use the Chat
Feature*

Reactions



Rules of the Road

- Attendees will be muted during the presentation to help eliminate background noise.
- Use the chat to ask questions during the presentation! We will pause for questions at various stopping points and have several poll questions.
- If you want to share your video, please do!
- For technical difficulties, send a private chat to Joanna Rohlf; or email Joanna.Rohlf@ks.gov
- We'll be recording this webinar for those who aren't able to attend today.

Intros

Kansas Department of Agriculture

Tara Lanzrath, CFM
Floodplain Mapping Coordinator

Joanna Rohlf, CFM
Floodplain Mapping Specialist

William Pace, CFM
Floodplain Mapping Specialist

Steve Samuelson, CFM
State NFIP Coordinator

Cheyenne Sun Eagle
NFIP Specialist

FEMA – Region VII

Andy Megrail – Regional Project Officer



AECOM Technical Services Inc.

Daniel Curley - Project Manager
Hayden Edwards – Project Engineer

Why We Are Here



Today's Goals

- Review how we developed your flood risk data
- Get your feedback on the flood risk data
- Review future steps

Main Takeaway: We want your feedback while your map is still in draft form and there is time to incorporate feedback

First, a brief recap



Over the past 30 years, flooding has been more dangerous in the U.S. than any other weather-related problem. To minimize flood damage, we must first understand where the risk is.

Why Have Floodplain Maps?

- Understand the risk so you can make informed planning decisions and avoid future flood damage in your community.
- Determine where flood insurance is needed and rate its cost.
 - Flood Insurance Rate Map (FIRM)
- Provide the basis for updating community floodplain management ordinances.
 - These ordinances are your tool for reducing your community's vulnerability to flood risk.

FEMA Floodplain Mapping Program



- Risk Mapping Assessment and Planning (Risk MAP)
- Supports the National Flood Insurance Program (NFIP); performed on a watershed basis.
- Consists of both Regulatory and Non-Regulatory Products.
- Through Risk MAP, we provide updated floodplain maps, as well as other (free!) data and tools that can help you plan to reduce your community's risk.

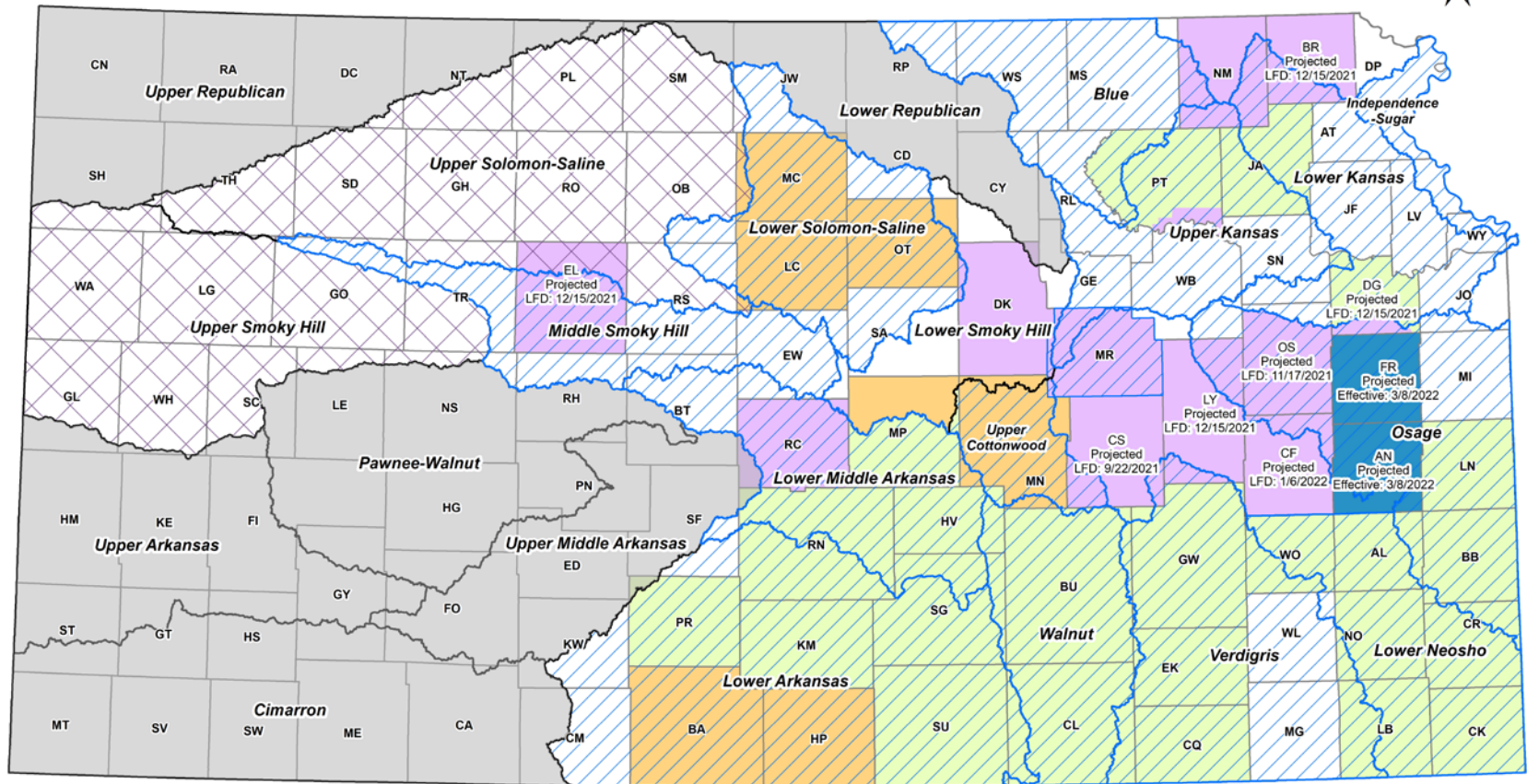
RiskMAP
Increasing Resilience Together

How Did We Get Here?

- Base Level Engineering (BLE) - 2020
 - Gives us early insight into your flood risk
 - Kick off Meeting held on March 5, 2019
 - Discovery and Initial Map Review Meeting held on February 26th and 27th, 2020
- Data Development – 2021
 - Enhance the engineering analysis
 - Develop regulatory draft floodplain maps
 - Develop Flood Insurance Study
 - Develop flood risk data tools for your community

We Do This Work Across Kansas

Current Floodplain Mapping Projects and Custom Watersheds



September 14, 2021

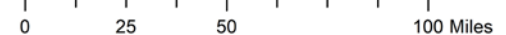
Project Status

- In Development
- Preliminary
- Draft
- LFD

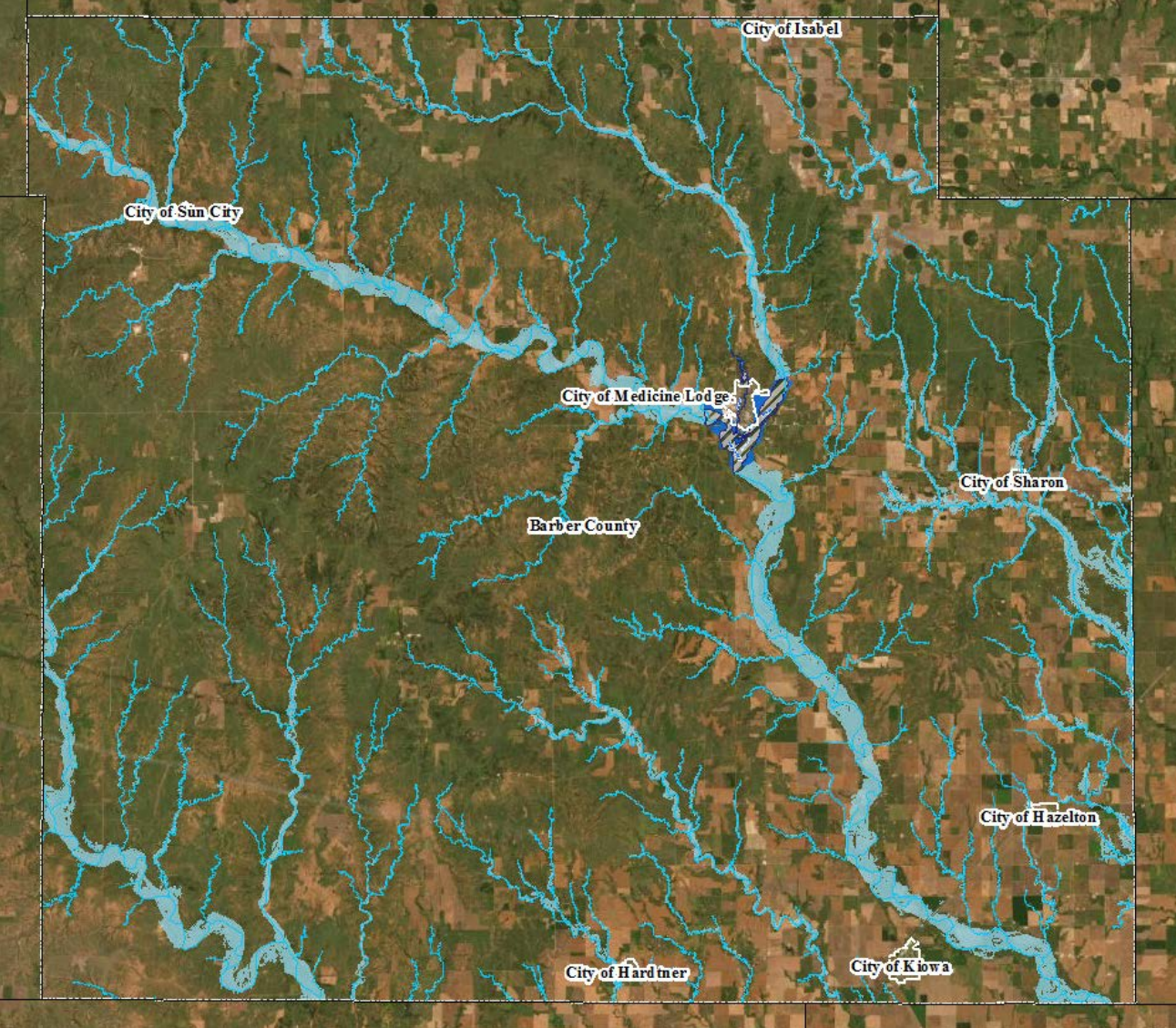
Watershed Projects

- Custom Watersheds (labeled)
- FY19 BLE* - In Progress
- BLE Projects - Data Available
- FY20 BLE - In Progress

*Not all watershed areas will be included. Please check with KDA for details.

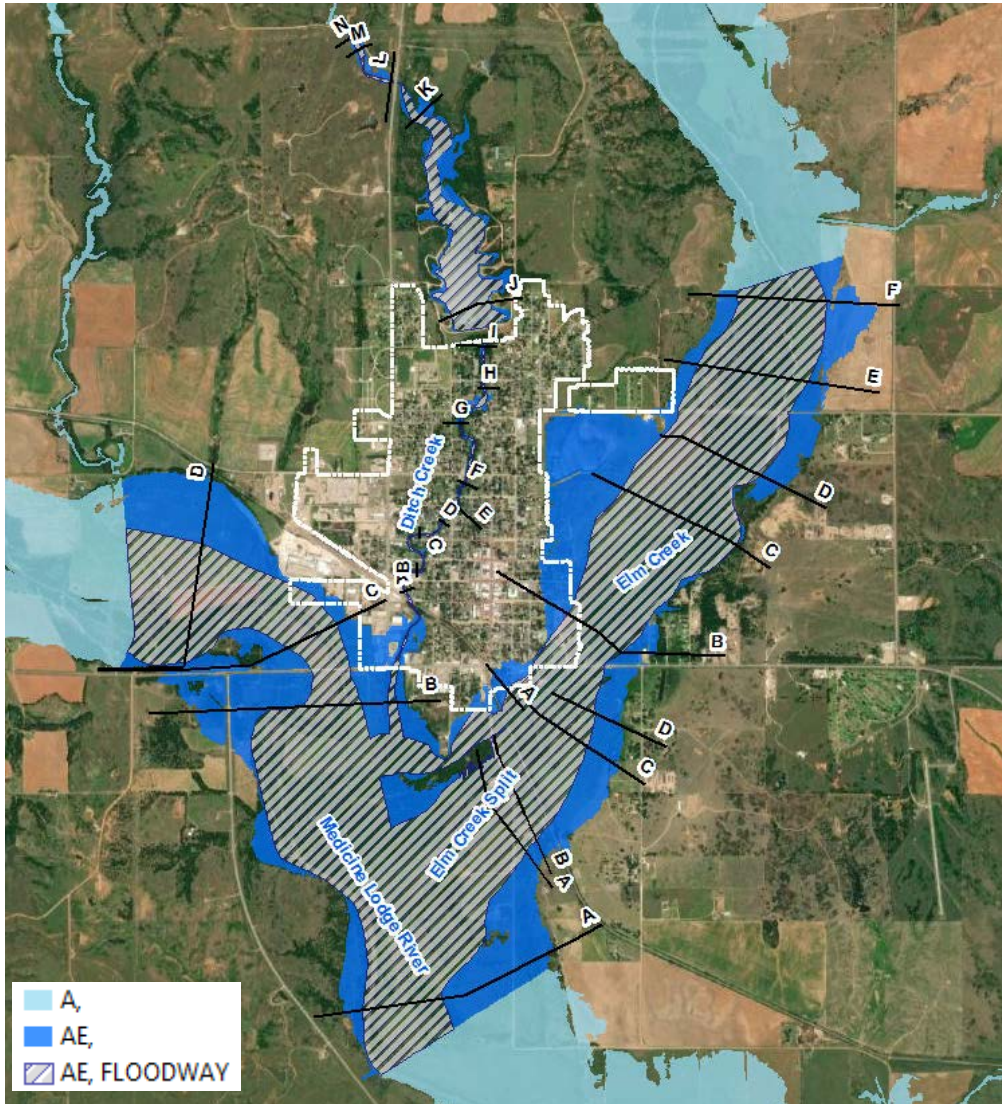


Barber County- Mapping Update



- A,
- AE,
- ▨ AE, FLOODWAY

Medicine Lodge



Enhanced Zone AE

- Ditch Creek, Elm Creek, Elm Creek Split, Medicine Lodge River: Models calibrated to stream gage and regression flows and includes field measured structures
- The floodway analysis was conducted in HEC-RAS 5.0.7 using the encroachment tool.
 - Effective floodway encroachments used as starting point.
 - Attempted to maintain the effective floodway boundary while not exceeding the 1.0 foot surcharge.

Definitions



Hydrology

How Much Water?



Hydraulics

How High Will Water Get?

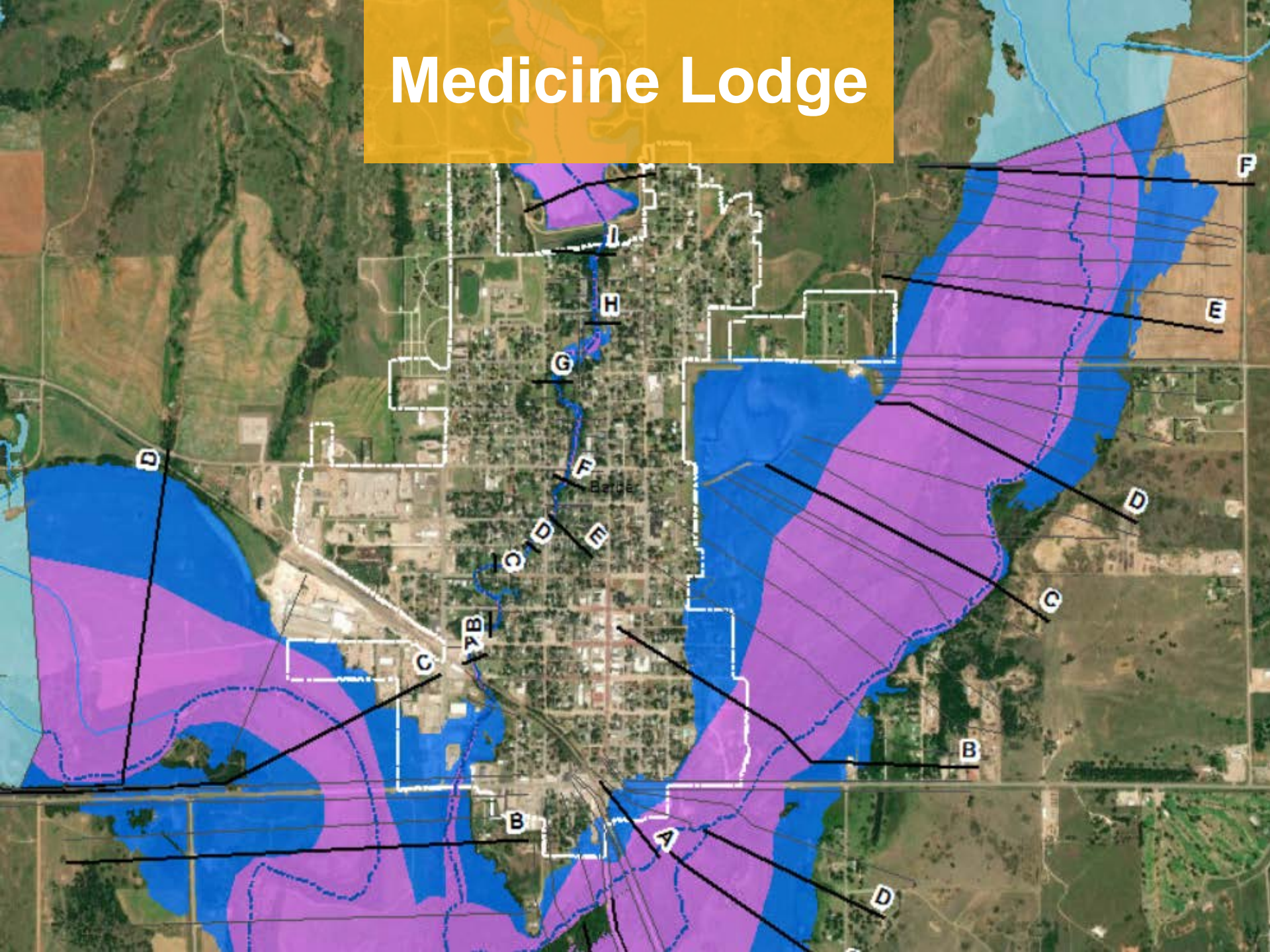




Data Gathered

- Information gathered during the BLE Phase of the project was incorporated and/or used for validation of modeling
- Survey and as-built plan information was gathered for bridge and culvert openings
- Sun City Technical Assistance. Flood Mitigation Scenario Modeling

Medicine Lodge



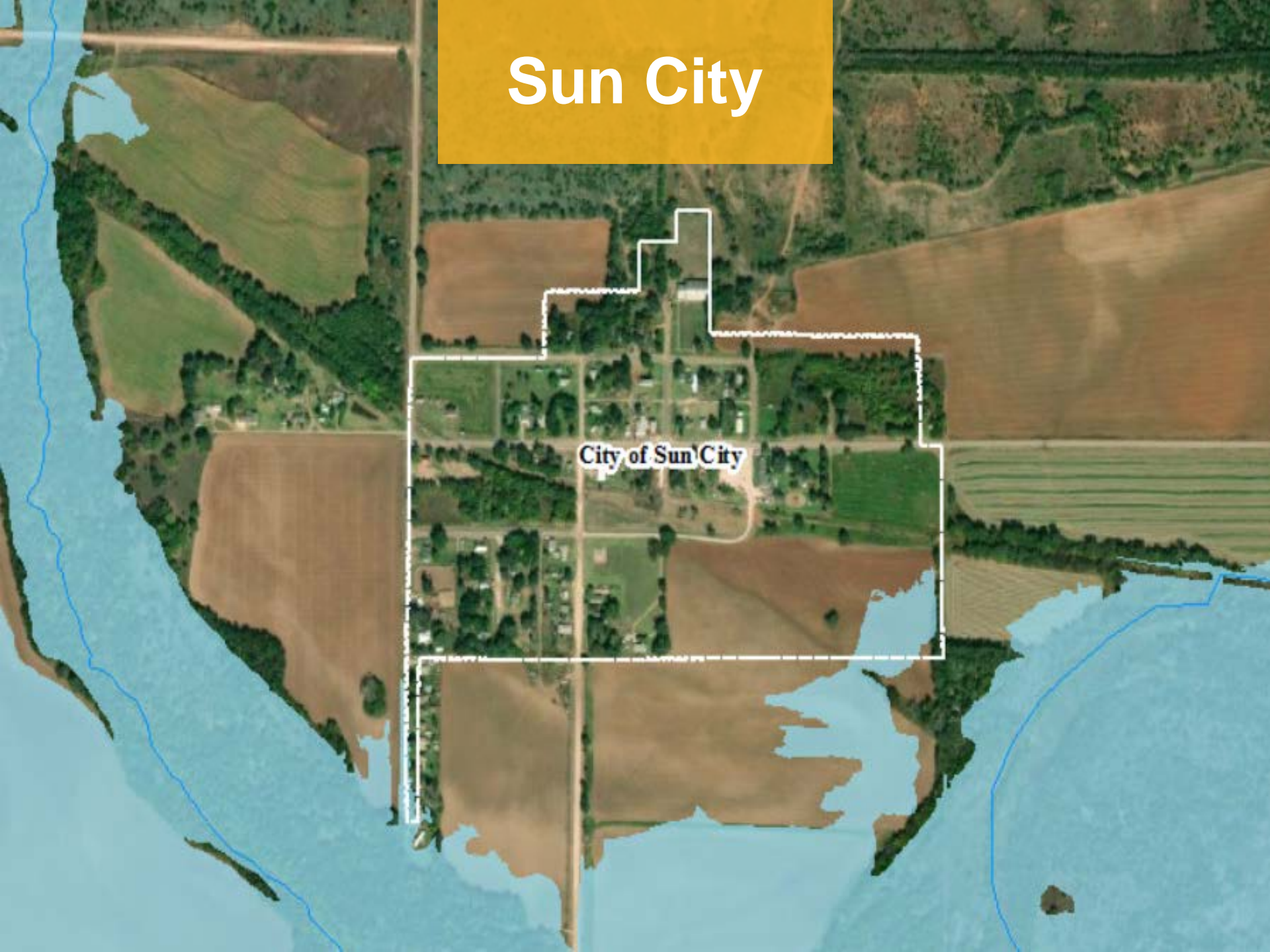
Sharon

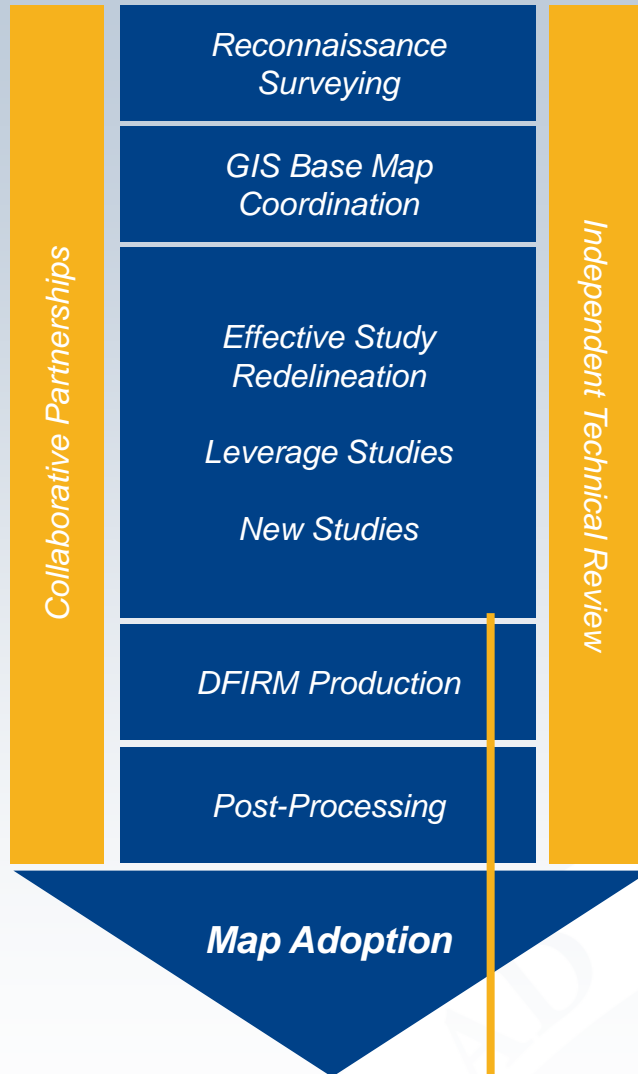
City of Sharon



Sun City

City of Sun City

An aerial photograph of Sun City, Indiana, with a white dashed line outlining the city's boundary. The city is situated in a rural area with large agricultural fields, some of which are brown (possibly harvested or fallow) and others green. A blue line representing a river or stream flows through the area, particularly on the left and bottom right. The text "City of Sun City" is overlaid on the map within the city boundary. A yellow rectangular box at the top of the image contains the text "Sun City".



Project Tasks

1. Discovery
2. Base Map Preparation
3. Survey and Topography *(if applicable)*
4. New Studies *(if applicable)*
5. DFIRM and FIS Production
6. Post-Preliminary

Finishing this phase: data development

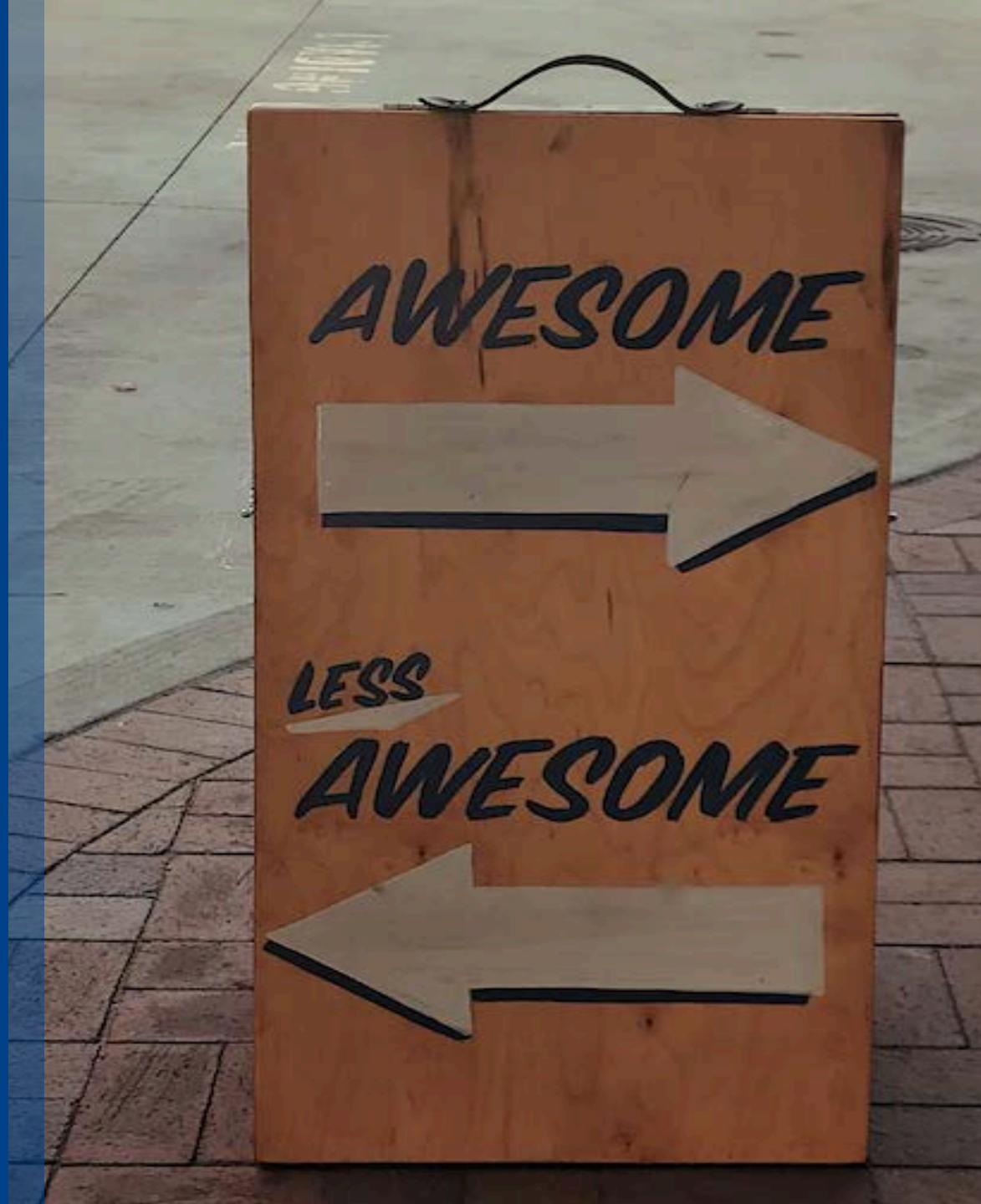
Your Maps Undergo Significant Review



- AECOM DART Review
 - Engineering reviewed by separate AECOM QA/QC Team
- Independent Technical Review (ITR)
 - Third party review of engineering
 - Wood Environment and Infrastructure Solutions, Inc
- KDA Review
 - Visual review
 - Eye test
 - Identify impact of the map
- FEMA Review
 - Formal quality review process of regulatory products
- Your Review!
 - Community Review
 - Public Review

Community Map Review

ASPERA



Your Map Review

This is your opportunity to have impact!

- We want to agree on what your map looks like before Preliminary Status
 - That's when we enter the regulatory map-making phase, and it's harder to change things
- A web map has been provided for review
 - <https://gis2.kda.ks.gov/gis/barber/>
 - FTP GIS Data Download:
<https://sftp.kda.ks.gov/public/folder/Fmb6HSPLckOcObfoXXaAlg/Barber>
- This is where **YOU** look out for **YOU: please provide your comments by November 13, 2021**



Barber County Floodplain Update




Barber County Proposed Scope

Q Enter an address or place

Legend

Floodplain Data

Draft Special Flood Hazard Area

-  A
-  AE
-  AE, FLOODWAY

Layers (Click to expand)

- Comments
- Floodplain Data
 - Barber Enhanced Scope
 - Lower Arkansas Custom Project Watershed
 - Base Flood Approximate Elevation
 - Base Flood Elevation
 - Lettered Cross Sections
 - Cross Sections
 - Streams
 - Medicine Lodge Current Effective FIRM
 - Draft Special Flood Hazard Area
 - Draft Advisory Floodplain
- NG911

Editor

Leave Comment

Draw

Measurement



Your Map Review



Recent construction (e.g., a new building development that incorporated fill or changes to roadways, bridges, or culverts)



High Water Marks showing past flooding impacts



Floodplain boundaries that align with your experience of large-scale flooding



Model stream extents (where streams begin and end)



Political boundaries, especially if there is a recent annexation



AECOM



FEMA

IMPORTANT STEP: All community comments will be addressed/reviewed before doing a public review

Your Residents Also Have the Opportunity to Review the Draft Data

- Can review and comment online, using same Review Web Map
- Will run for at least 30 days
- We will also hold an Open House
 - Typically consists of computer stations where public can discuss draft floodplains with KDA, engineers, mapping experts, and insurance specialists
 - Will adjust to virtual Open House, if needed
- We'll need your help notifying your residents and finding location
- Tentatively scheduled for November 2021





Open Discussion

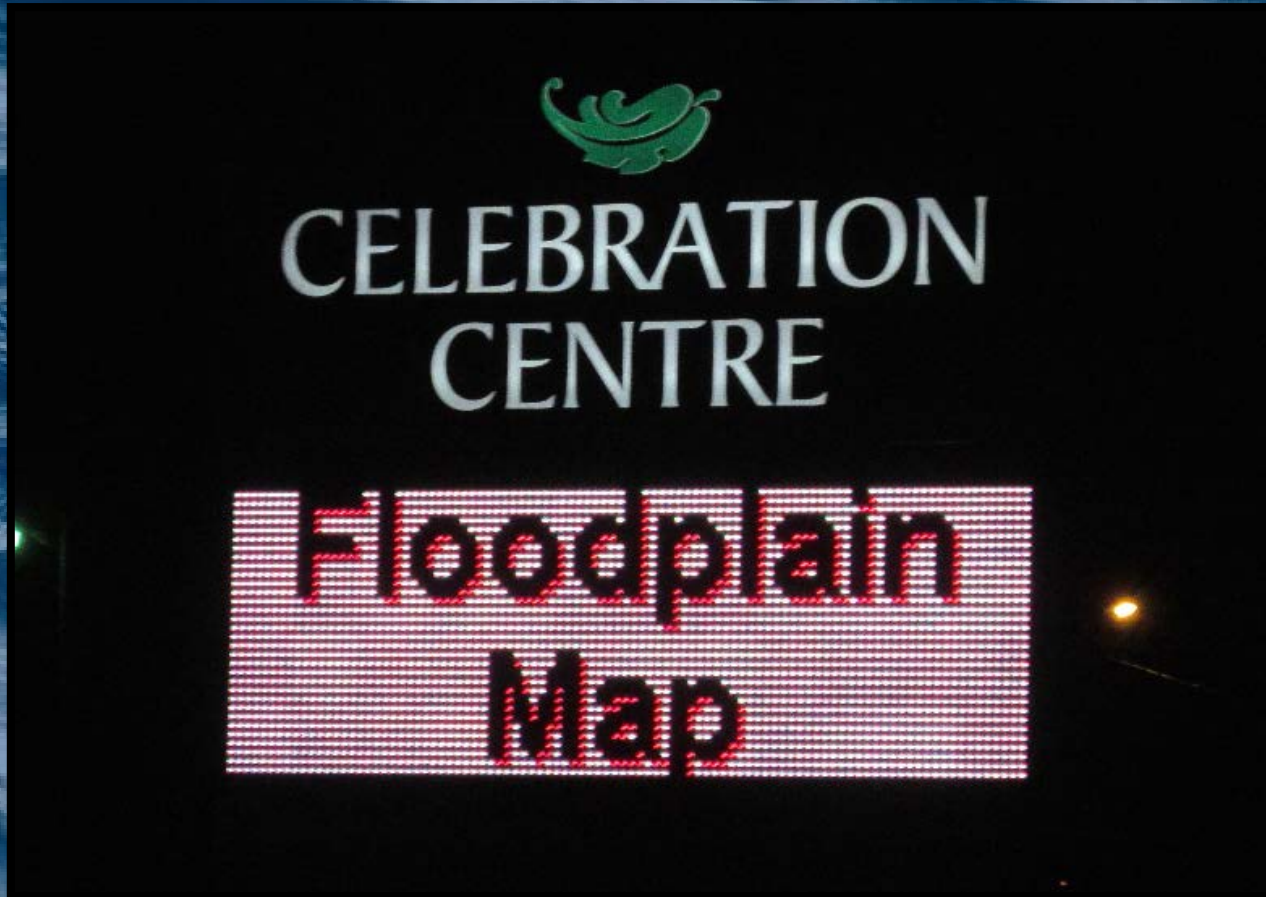
**Unmute your phones and
let's talk about this.**

Our questions:

- Do you think in-person or virtual Open House options would work for your community?
- Could you help promote an Open House?
- If so, how would you do that? Social media? Newsletters? Website posting? Direct mail?

***What are your questions?
We know you have some...***

Next Steps




Timeline Review

- Your Review
 - Please get comments in by November 13, 2021
- Public Open House
 - Estimated: November 2021
- Preliminary Map Distribution
 - Estimated: March 2022
- Preliminary DFIRM Community Coordination Meeting
 - Estimated: May 2022
- Appeal Period
 - Estimated: Sept – Dec 2022
- Letter of Final Determination
 - Estimated: May 2023
- Effective Maps
 - Estimated: November 2023



Where we still have flexibility to change the data



Where you have to follow a more formal process (with higher effort) to request any changes to the data

Your Next Steps

Review your community's maps and comment on areas of concern AND/OR areas that look right.

There are a few ways to do this:



Lead the public outreach for your community

We can help you target who most needs to know;
but will need your help to lead the outreach effort

Let us know if you need help or have any remaining questions!



Key Take-aways

Floodplain Mapping Projects take time

Your involvement in this process will result in better flood information for your community

Get it right before Preliminary!

***DON'T HESITATE TO CALL,
WE ARE HERE TO HELP***

Consider Joining the NFIP!



Why join the NFIP?

- Property owners would be able to insure against flood losses
- Qualify for federal grants or loans for development
- Qualify for federal disaster assistance for damages caused by a flood
- Adoption of a floodplain management ordinance leads to smart development against flood risk

Any questions?

Where to go for...

INFEQ



Online Project Information



– Project Website

- <https://agriculture.ks.gov/divisions-programs/dwr/floodplain/mapping/mapping-projects/lists/mapping-projects/lower-arkansas>
- Scoping Maps, Project Timeline, Meeting Presentations, Newsletters, Technical Reports, Web Review Map

– Web Review Map

- <https://gis2.kda.ks.gov/gis/barber/>
- Draft Floodplain Review
- FTP GIS Data Download:
<https://sftp.kda.ks.gov/public/folder/Fmb6HSPLckOcObfoXXaAlg/Barber>

– Story Maps

- Project Info
- “Floodplain Current”: Mapping Process ‘Nuts and Bolts’

Base Flood Elevation Portal



Kansas Base Flood Elevation Portal

[Home](#)

[About](#)

[Help](#)

Portal Registration

First Name

Last Name

User name

Title

Phone

Email Address

Address

City

Zip

State

[Register](#)

For Zone A floodplains, you can request BFE Data. Keep in mind that the data is still subject to change.

Contact Information



KDA

Tara Lanzrath, CFM

Tara.Lanzrath@ks.gov

D: 785-296-2513

M: 785-276-9359

Floodplain Mapping Coordinator

Joanna Rohlf, CFM

Joanna.Rohlf@ks.gov

D: 785-296-7769

Floodplain Mapping Specialist

William Pace, CFM

William.Pace@ks.gov

D: 785-296-5440

Floodplain Mapping Specialist

Steve Samuelson, CFM

Steve.Samuelson@ks.gov

D: 785-296-4622

M: 785-221-3809

State NFIP Coordinator

Cheyenne Sun Eagle

Cheyenne.suneagle@ks.gov

D: 785-296-0854

NFIP Specialist

Contact Information



AECOM

Daniel Curley

daniel.curley@aecom.com

D: 816-410-6376

Project Manager

Hayden Edwards

hayden.edwards@aecom.com

O: 816-360-4638

Engineer

FEMA

Andy Megrail, FAC-P/PM

Andy.Megrail@fema.dhs.gov

O: 816-283-7982

M: 816-807-3014

Regional Project Officer



AECOM



FEMA

And now...

*We are going to show you how
to make comments and review
your community's map*

Any questions first?