

**Lower Neosho Custom Watershed
Floodplain Mapping Kickoff Meeting**

Tuesday, November 19th at 10:30 AM – 12:00 PM

Memorial Building, Alliance Room, 3rd Floor ♦ 101 S. Lincoln, Chanute, KS 66720

**KDA - Division of Water Resources
Topeka Field Office**
6531 SE Forbes Avenue, Suite B
Topeka, KS 66619

Tara Lanzrath, CFM
Floodplain Mapping Coordinator
785-296-2513
Tara.Lanzrath@ks.gov

Joanna Rohlf, GISP, CFM
Floodplain Mapping
Specialist
785-296-7769
Joanna.rohlf@ks.gov

**Wood Environment & Infrastructure Solutions,
Inc.**
100 SE 9th Street, Suite 400
Topeka, KS 66612

Joe File, PE, CFM
Project Manager
785-554-9108
joe.file@woodplc.com

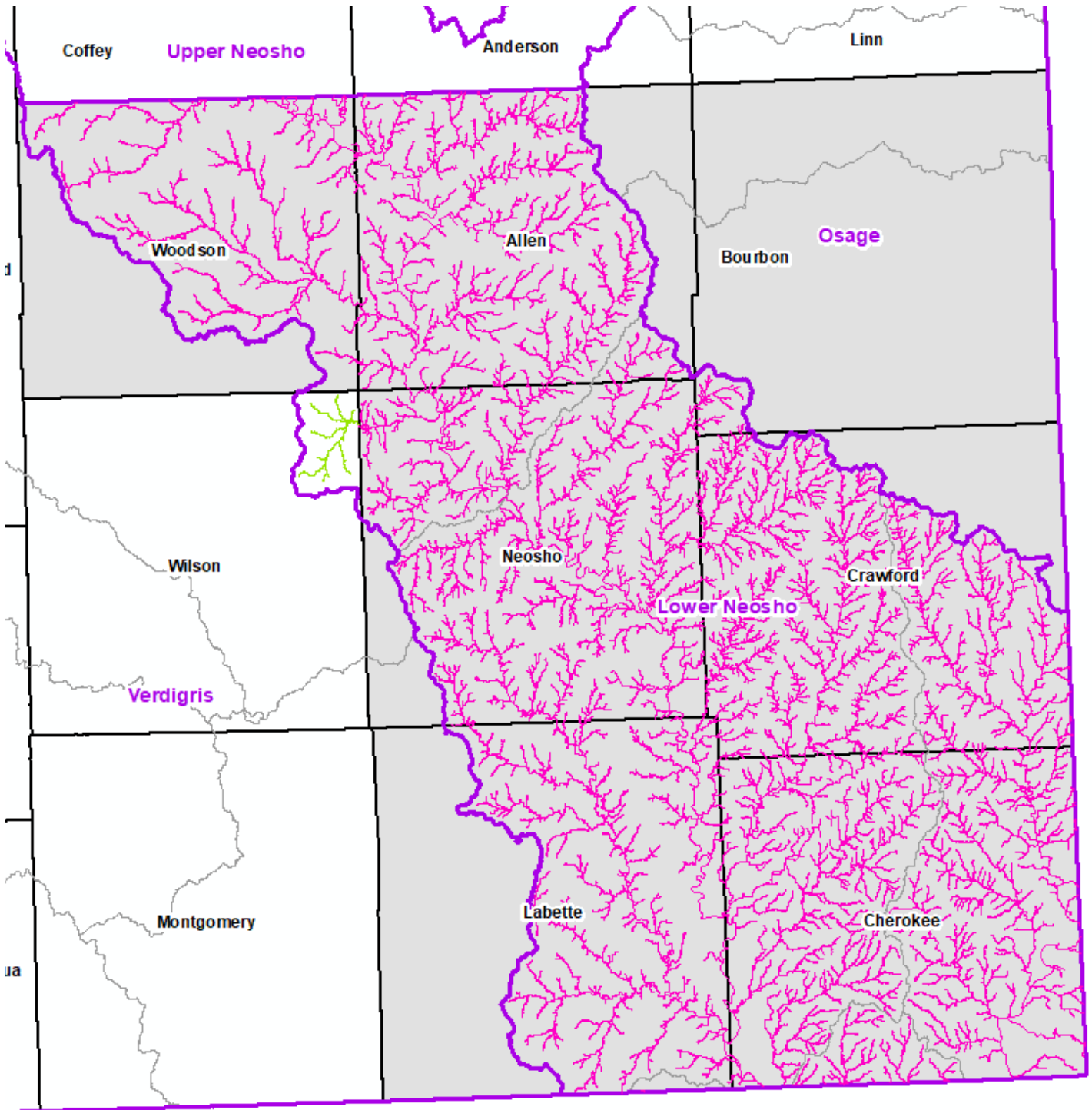
Maria Neeland, PE, CFM
Engineer
785-410-7499
Maria.neeland@woodplc.com

A web map is available to review project information: http://gis2.kda.ks.gov/gis/lower_neosho/

Important Upcoming Dates

1. Deadline to submit Community Map Review Comments	December 19, 2019
2. Discovery Meeting	February 2020
3. Data Development (Linn, Allen, Bourbon, and Crawford Counties)	Estimated for 2021

Planned Regulatory Updates



- Planned Update
- No Planned Update