



wood.



FEMA

Woodson County, KS Flood Risk Review Meeting

Hybrid Meeting

April 27, 2022

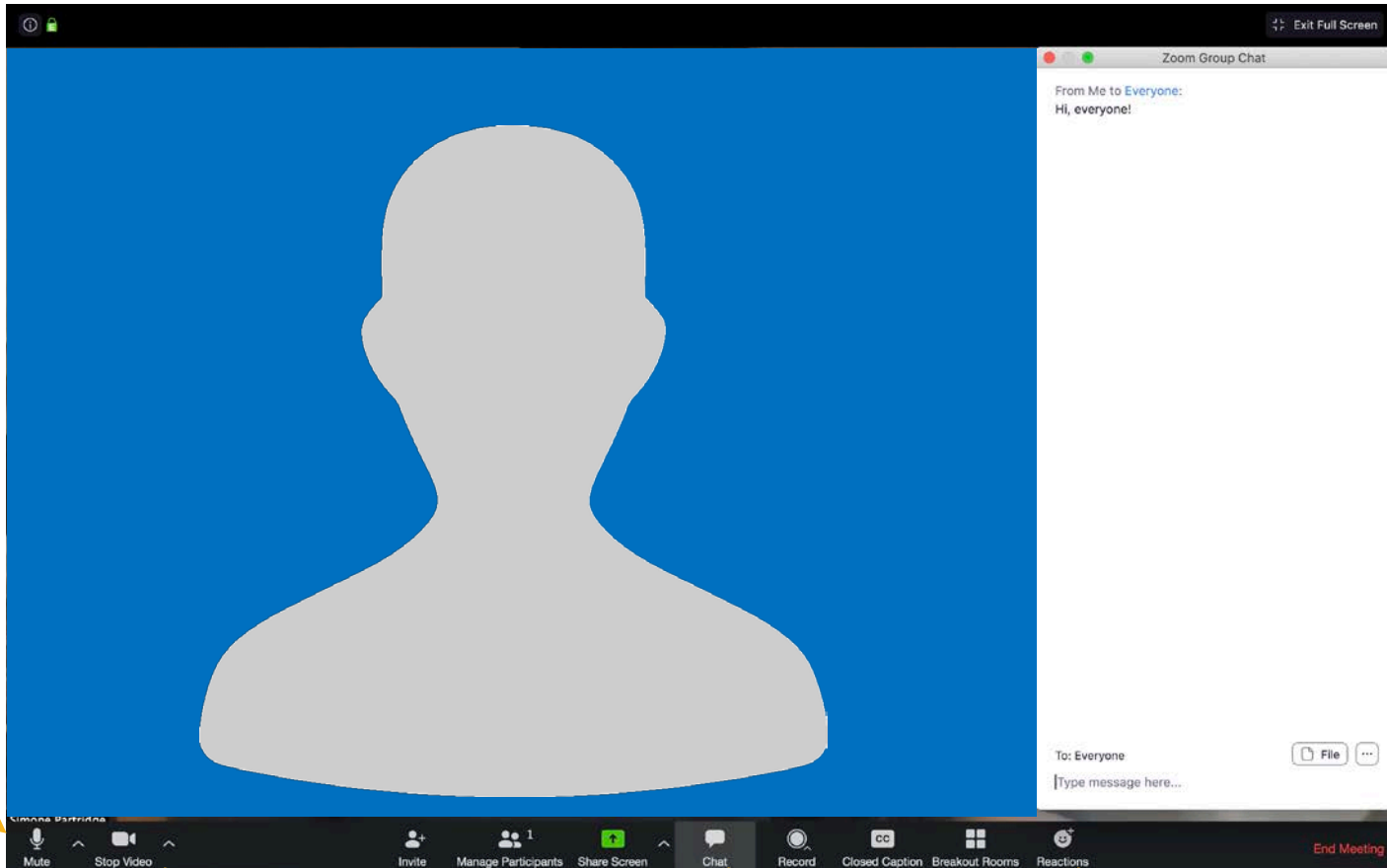
While we are waiting, please enter your name and community in the chat box!

THANK YOU!

*We appreciate the time you are giving to this work
and we want to use it wisely.*

*Your feedback at this point in the project is **very important**.*

Zoom Features



*Mute /
Unmute*

Start your Video

*Use the Chat
Feature*

Reactions



Rules of the Road

- Attendees joining on Zoom will be muted during the presentation to help eliminate background noise.
- Use the chat to ask questions during the presentation! We will pause for questions at various stopping points.
- If you want to share your video, please do!
- For technical difficulties, send a private chat to William Pace; or email William.Pace@ks.gov
- We'll be recording this webinar for those who aren't able to attend today.

Intros

Kansas Department of Agriculture

Tara Lanzrath, CFM
Floodplain Mapping Coordinator

Joanna Rohlf, GISP, CFM
Floodplain Mapping Specialist

William Pace, CFM
Floodplain Mapping Specialist

Steve Samuelson, CFM
State NFIP Coordinator

Cheyenne Sun Eagle
NFIP Specialist

FEMA – Region VII

Andy Megrail – Regional Project Officer



Wood Environment & Infrastructure Solutions Inc.

Larry Sample, PE, CFM - Project Manager

Lisa Tuckwin, GISP, CFM – Lead GIS Analyst

Why We Are Here



Today's Goals

- Review how we developed your flood risk data
- Get your feedback on the flood risk data
- Review future steps

Main Takeaway: We want your feedback while your map is still in draft form and there is time to incorporate feedback

First, a brief recap



Over the past 30 years, flooding has been more dangerous in the U.S. than any other weather-related problem. To minimize flood damage, we must first understand where the risk is.

Why Have Floodplain Maps?

- Understand the risk so you can make informed planning decisions and avoid future flood damage in your community.
- Determine where flood insurance is needed.
 - Flood Insurance Rate Map (FIRM)
- Provide the basis for updating community floodplain management ordinances.
 - These ordinances are your tool for reducing your community's vulnerability to flood risk.

FEMA Floodplain Mapping Program

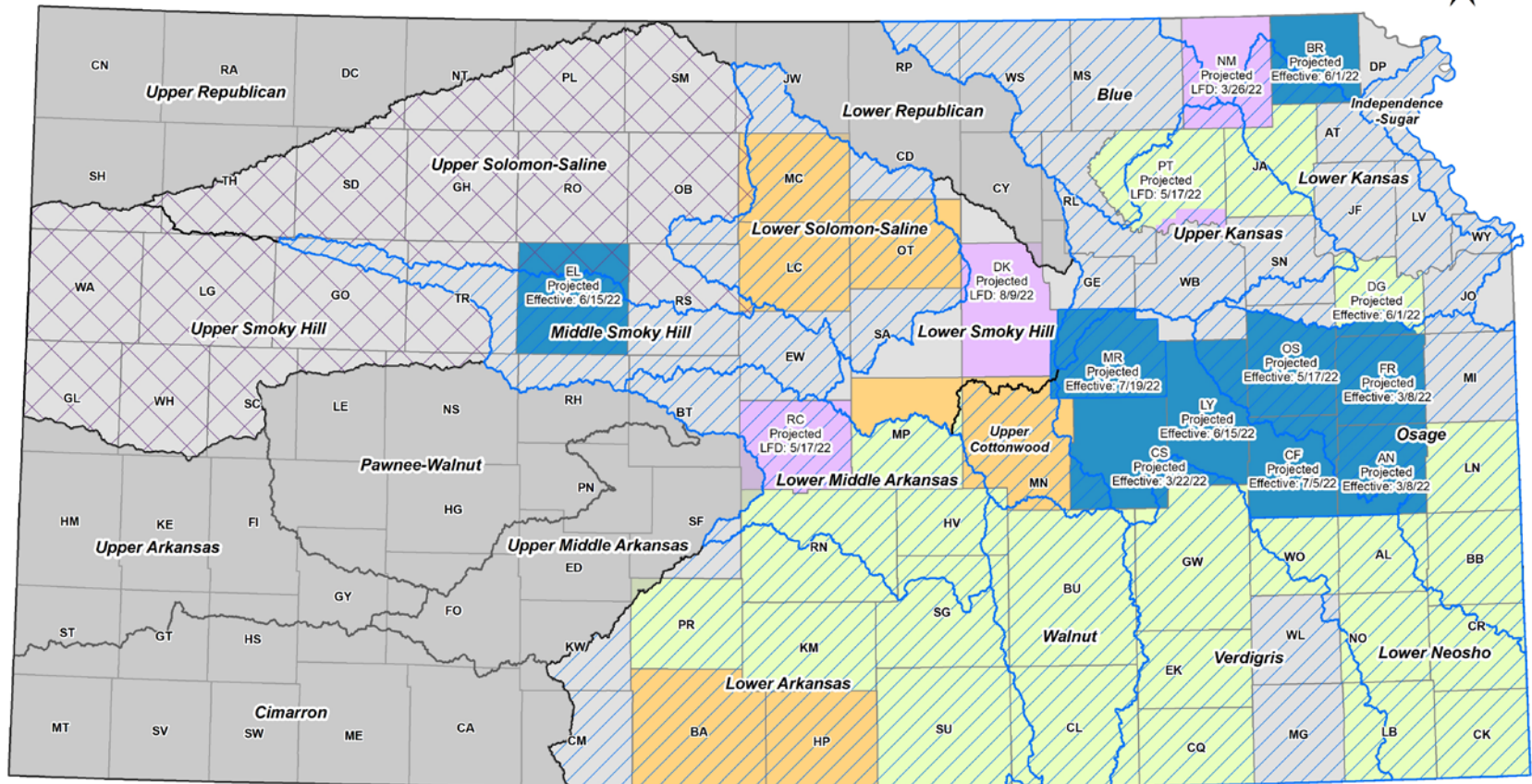


- Risk Mapping Assessment and Planning (Risk MAP)
- Supports the National Flood Insurance Program (NFIP); performed on a watershed basis.
- Consists of both Regulatory and Non-Regulatory Products.
- Through Risk MAP, we provide updated floodplain maps, as well as other (free!) data and tools that can help you plan to reduce your community's risk.

RiskMAP
Increasing Resilience Together

We Do This Work Across Kansas

Current Floodplain Mapping Projects and Custom Watersheds



March 7, 2022

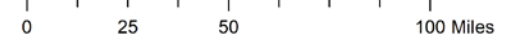
Project Status

- In Development
- Draft
- Preliminary
- LFD

Watershed Projects

- Custom Watersheds (labeled)
- BLE Projects - Data Available
- FY19 BLE* - In Progress
- FY20 BLE - In Progress

*Not all watershed areas will be included. Please check with KDA for details.



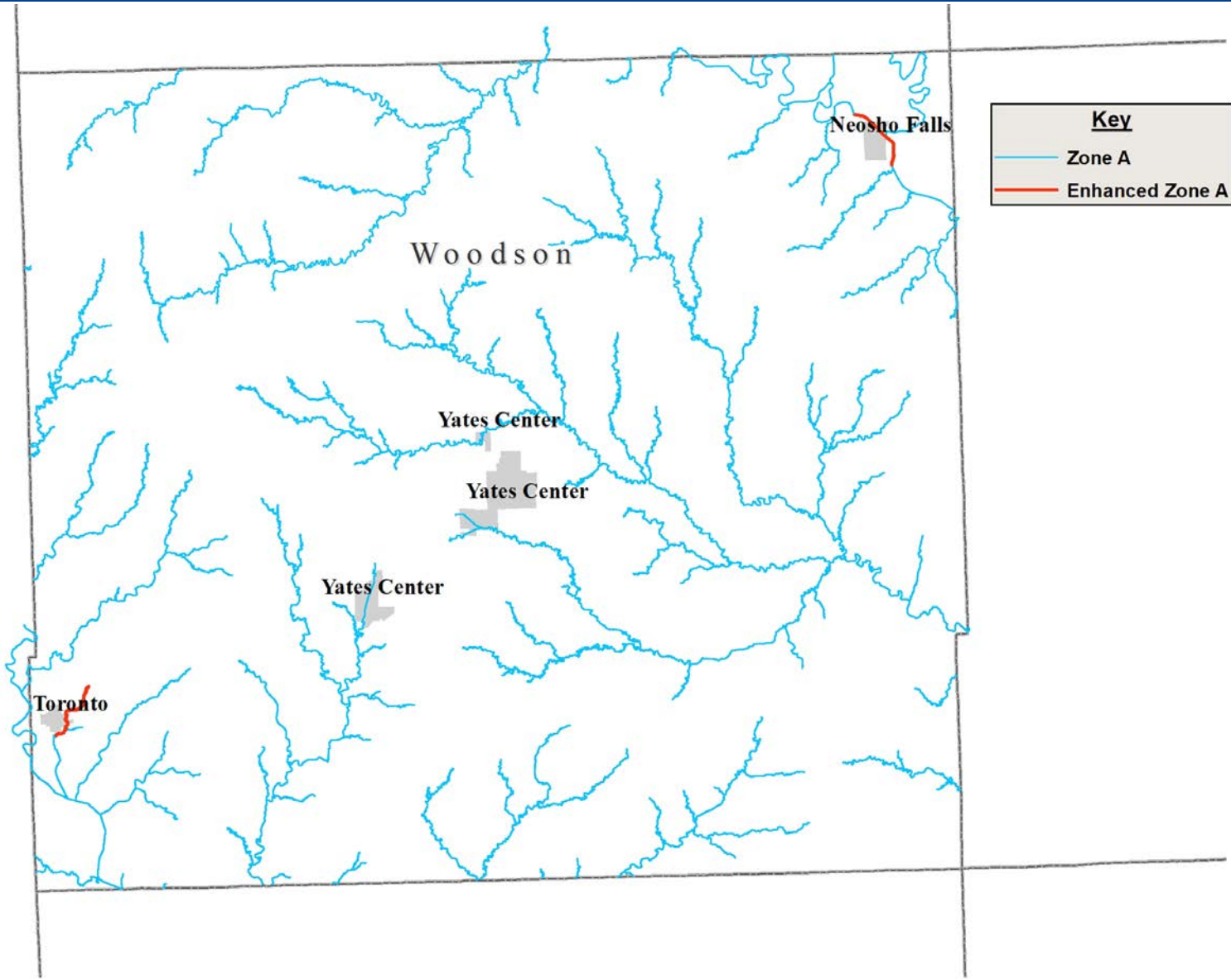
How Did We Get Here?

- Base Level Engineering (BLE) - 2020
 - Gives us early insight into your flood risk
 - Lower Neosho Custom Watershed
 - Kickoff Meeting held on November 19, 2019
 - Discovery and Initial Map Review Meeting held on April 15, 2020
 - Verdigris Custom Watershed
 - Kickoff Meeting held on January 28, 2020
 - Discovery and Initial Map Review Meeting held on April 21, 2020
- Woodson County is mostly unmapped with only a paper map in Neosho Falls
 - All communities participate in the NFIP. Woodson County participates under the emergency phase

How Did We Get Here?

- Data Development – 2021- 2022
 - Kickoff Meeting held on July 13, 2021
 - Discussed Project Scope & Modeling Methods
 - Enhance the engineering analysis
 - Develop regulatory draft floodplain maps
 - Develop Flood Insurance Study
 - Develop flood risk data tools for your community

Woodson County- Mapping Update



Enhanced Zone A

- Neosho River near Neosho Falls: Model calibrated to gage flows and includes field measured structures
- Verdigris River Tributary near Toronto: Model includes field measured structures

Definitions



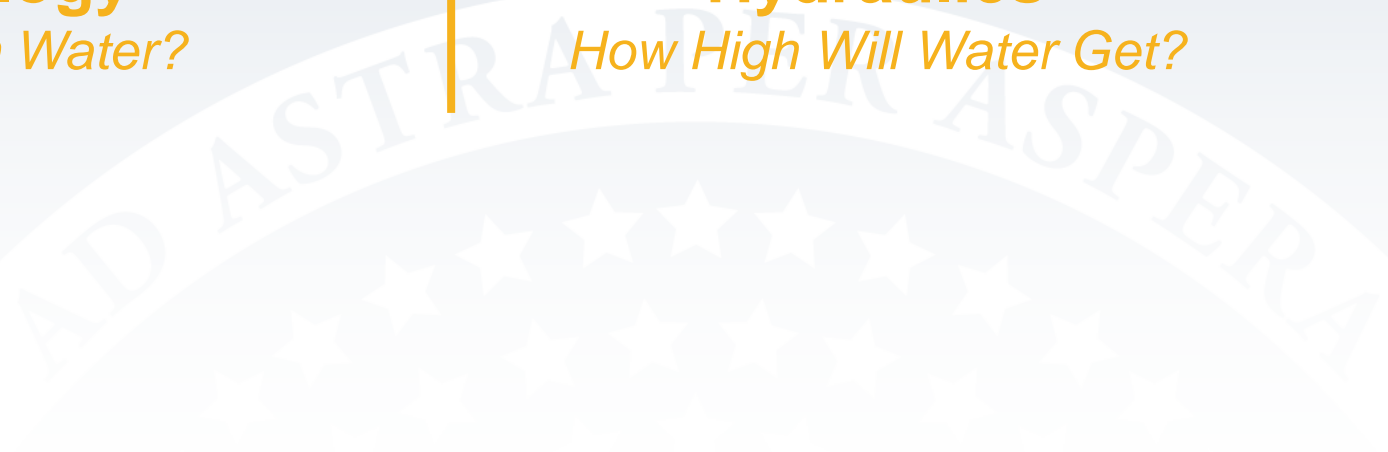
Hydrology

How Much Water?



Hydraulics

How High Will Water Get?





Data Gathered

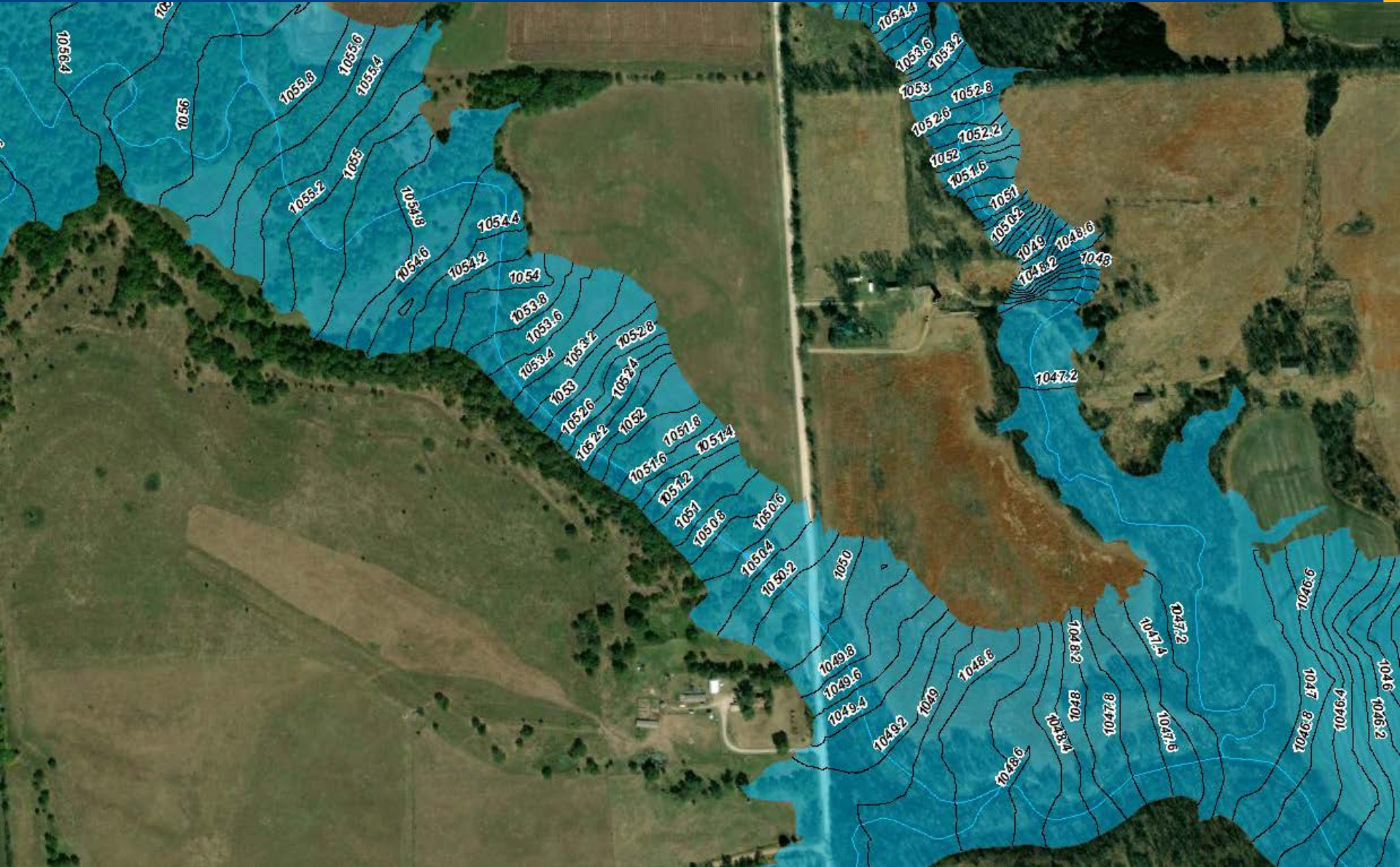
- Information gathered during the BLE Phase of the project was incorporated and/or used for validation of modeling
- Survey and as-built plan information was gathered for bridge and culvert openings for enhanced areas



Levees

- There are 8 non-accredited agricultural levees in the county.
- These levees are overtopped for the 1% annual chance storm and are considered hydraulically insignificant.
- The new mapping is based on a Natural Valley Procedure which reflects the levee geometry in the hydraulic model but allows water to flow on either side of the levee.

Example of Zone A



Neosho Falls



Neosho River

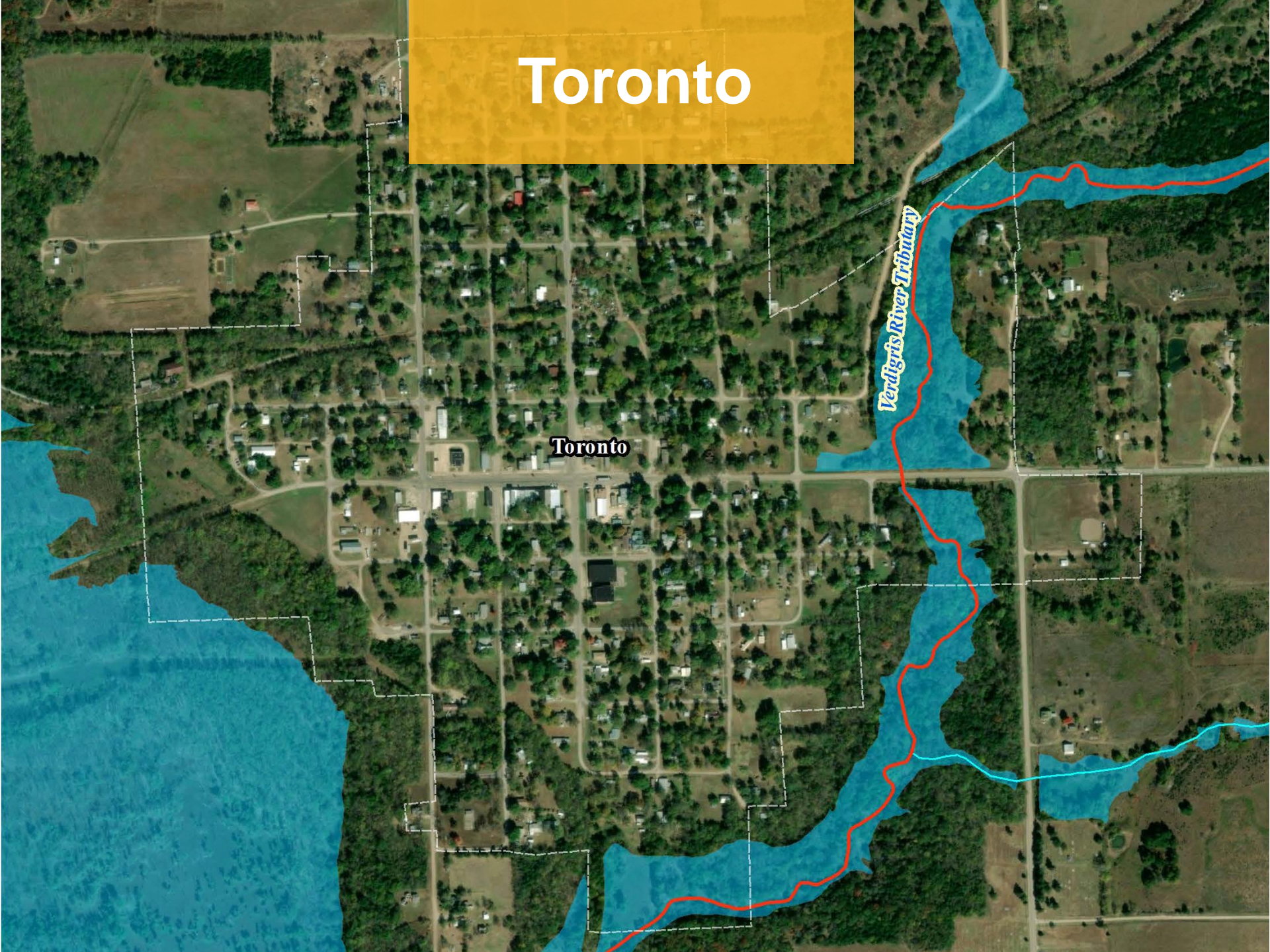
Spring Creek

Neosho Falls

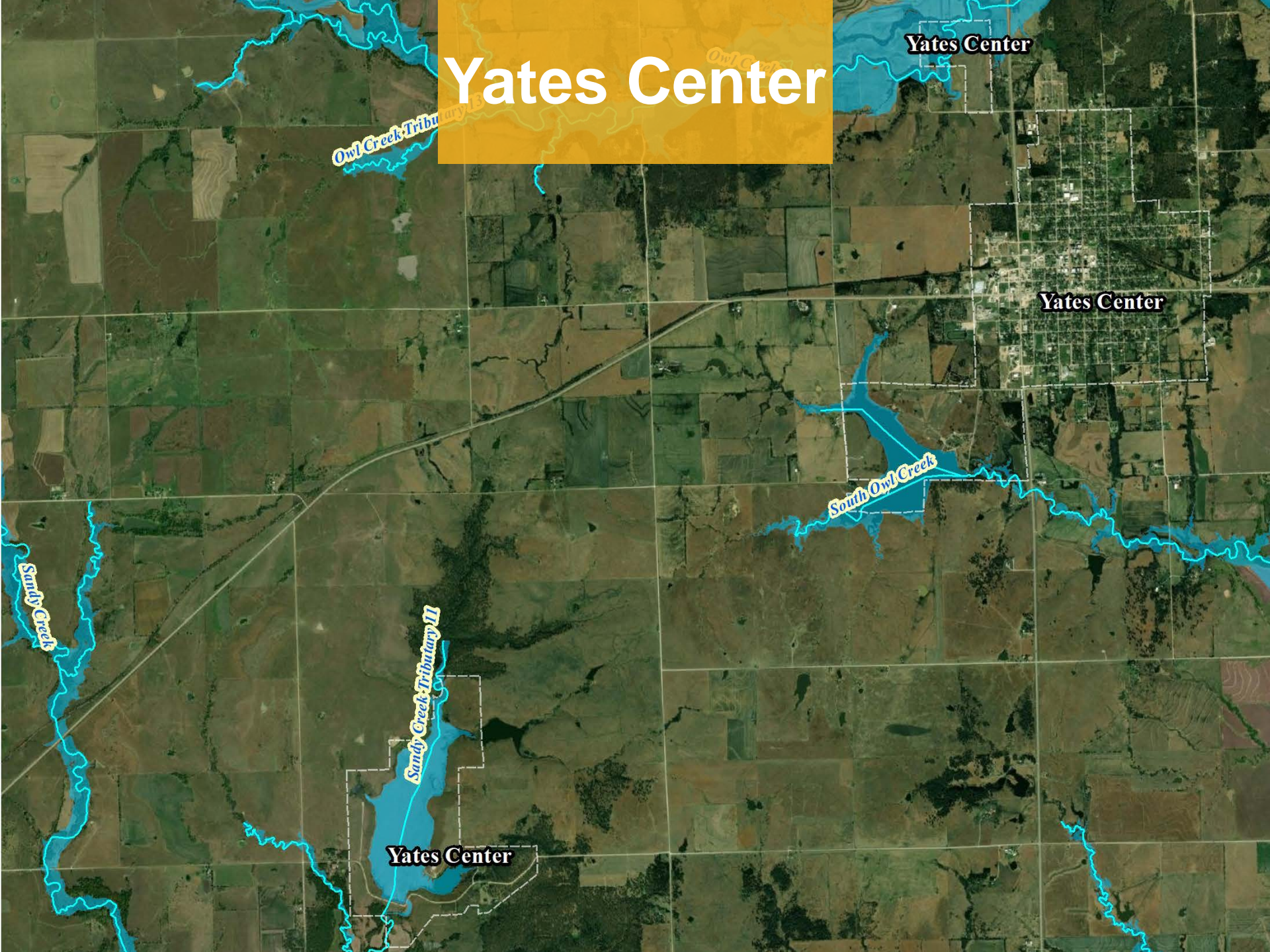
Toronto

Toronto

Verdigris River Tributary



Yates Center



Yates Center

Owl Creek Tributary

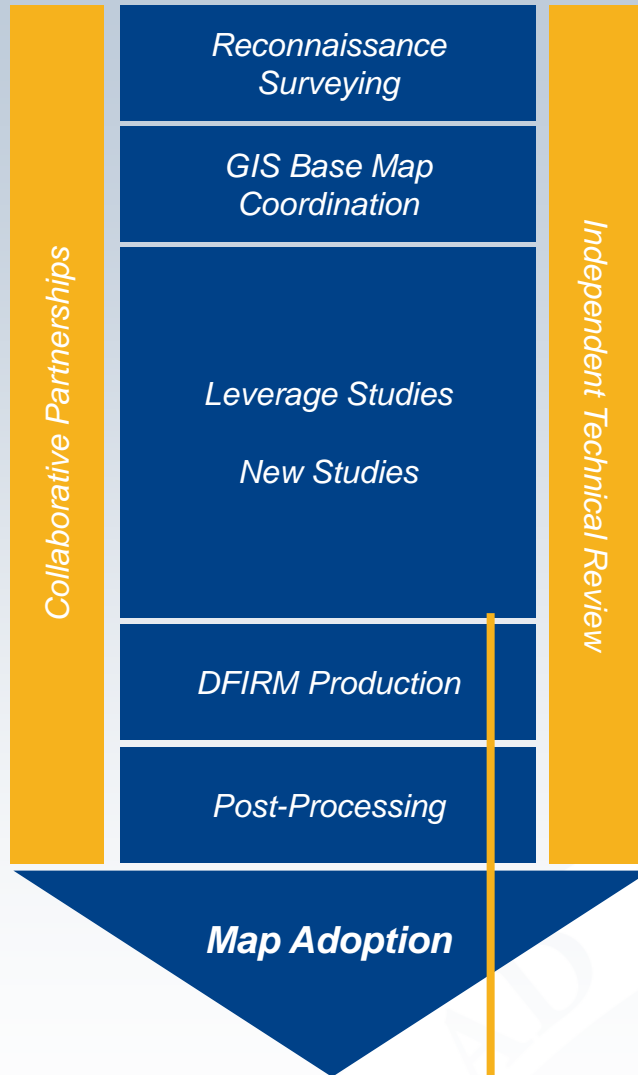
Yates Center

South Owl Creek

Sandy Creek

Sandy Creek Tributary II

Yates Center



Project Tasks

1. Discovery
2. Base Map Preparation
3. Survey and Topography
4. New Studies
5. DFIRM and FIS Production
6. Post-Preliminary

Finishing this phase: data development

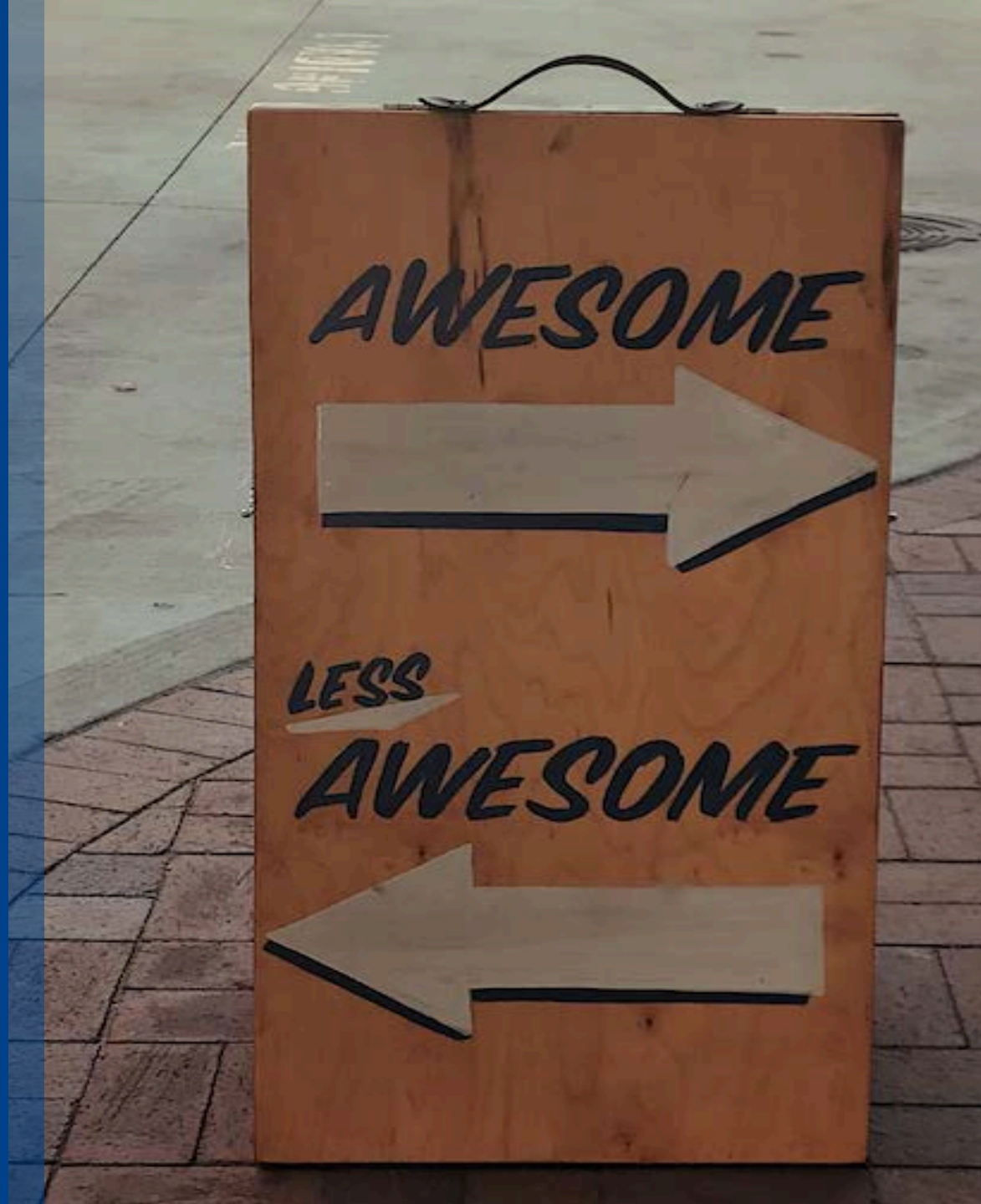
Your Maps Undergo Significant Review



- Wood E&IS Review
 - Engineering reviewed by separate Wood E&IS office
- Independent Technical Review (ITR)
 - Third party review of engineering
 - AECOM
- KDA Review
 - Visual review
 - Eye test
 - Identify impact of the map
- FEMA Review
 - Formal quality review process of regulatory products
- Your Review!
 - Community Review
 - Public Review

Community Map Review

ASPERA



Your Map Review



This is your opportunity to have an impact!

- We want to agree on what your map looks like before Preliminary Status
 - That's when we enter the regulatory map-making phase, and it's harder to change things
- A web map has been provided for review
 - <https://gis2.kda.ks.gov/gis/woodson/>
- This is where **YOU** look out for **YOU: please provide your comments by May 27, 2022**



Woodson County Floodplain Mapping

Draft Floodplain Mapping updated 4-11-2022.

Q Enter an address or place

Legend

Floodplain Data

City Boundaries



Draft Special Flood Hazard Area

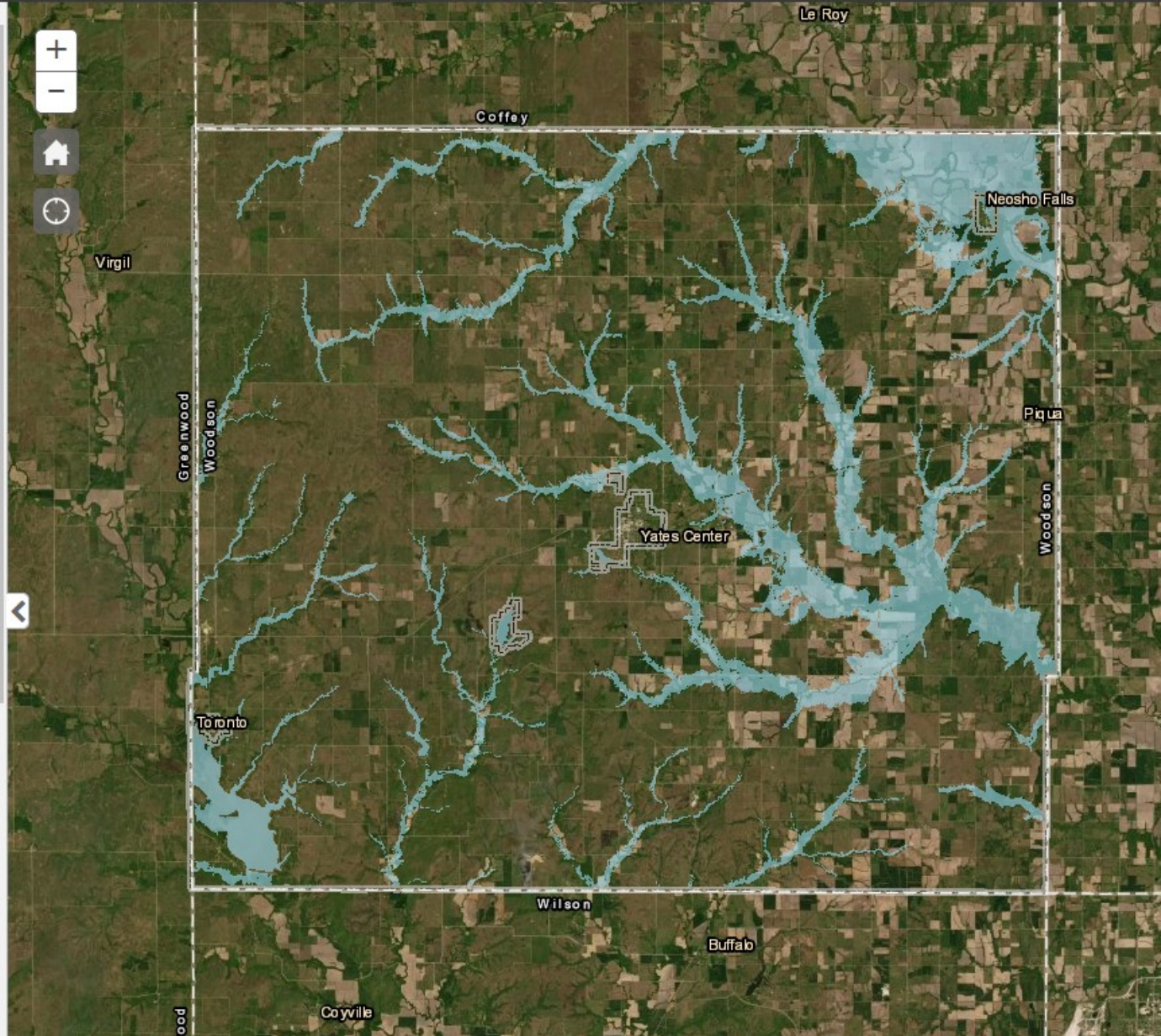


Comments



Layers (Click to expand)

- Comments
- Study Status
- BFE Requests
- Floodplain Data
 - Woodson Scoping Lines
 - Draft Base Flood Approximate Elevation
 - Streams
 - City Boundaries
 - Draft Special Flood Hazard Area
 - Draft Advisory Floodplains
- Lower Neosho Floodplain Data
 - Allen Scoping Lines
 - Cherokee Scoping Lines
 - Crawford Scoping Lines
 - Labette Scoping Lines



Your Map Review



Recent construction (e.g., a new building development that incorporated fill or changes to roadways, bridges, or culverts)



High Water Marks showing past flooding impacts



Floodplain boundaries that align with your experience of large-scale flooding



Model stream extents (where floodplains begin and end)



Political boundaries, especially if there is a recent annexation



wood.



FEMA

IMPORTANT STEP: All community comments will be addressed/reviewed before doing a public review

Your Residents Also Have the Opportunity to Review the Draft Data

- Can review and comment online, using same Review Web Map
- Will run for at least 30 days
- We will also hold an Open House
 - Typically consists of computer stations where public can discuss draft floodplains with KDA, engineers, mapping experts, and insurance specialists
- We'll need your help notifying your residents and finding location
- Tentatively scheduled for August 2022





Open Discussion

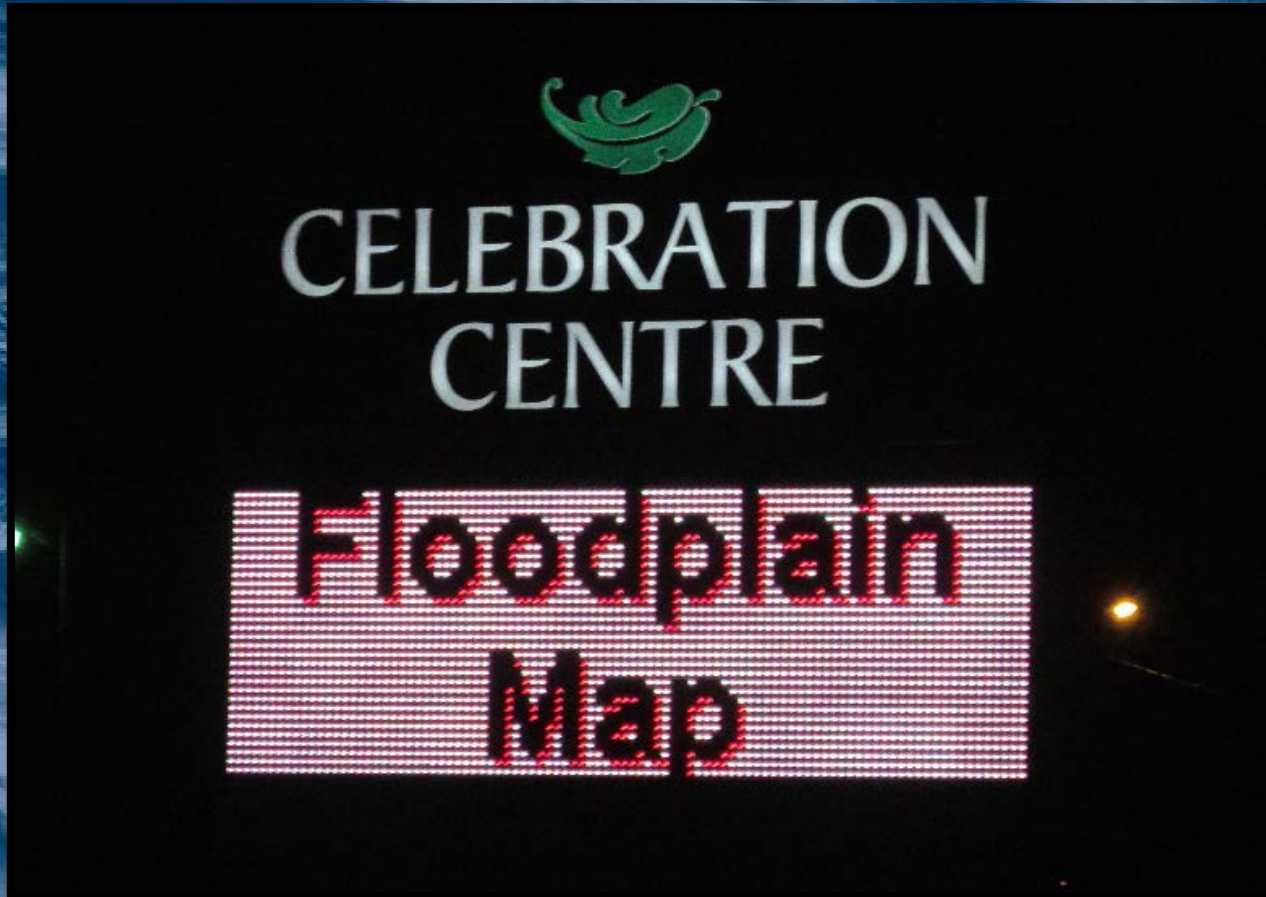
**Zoom attendants unmute
your phones and let's talk
about this.**

Our questions:

- What location should we hold the Open House?
- Could you help promote an Open House?
- If so, how would you do that? Social media? Newsletters? Website posting? Direct mail?

***What are your questions?
We know you have some...***

Next Steps




Timeline Review

- Your Review
 - Please get comments in by May 27, 2022
- Public Open House
 - Estimated: August 2022
- Preliminary Map Distribution
 - Estimated: January 2023
- Preliminary DFIRM Community Coordination Meeting
 - Estimated: February 2023
- Appeal Period
 - Estimated: February-May 2023
- Letter of Final Determination
 - Estimated: September 2023
- Effective Maps
 - Estimated: March 2024



Where we still have flexibility to change the data



Where you have to follow a more formal process (with higher effort) to request any changes to the data

Your Next Steps

Review your community's maps and comment on areas of concern AND/OR areas that look right.

There are a few ways to do this:



Lead the public outreach for your community

We can help you target who most needs to know;
but will need your help to lead the outreach effort

Let us know if you need help or have any remaining questions!



Key Take-aways

Floodplain Mapping Projects take time

Your involvement in this process will result in better flood information for your community

Get it right before Preliminary!

**DON'T HESITATE TO CALL,
WE ARE HERE TO HELP**



National Flood Insurance Program



Benefits of the NFIP

- Property owners would be able to insure against flood losses
- Qualify for federal grants or loans for development
- Qualify for federal disaster assistance for damages caused by a flood
- Adoption of a floodplain management ordinance leads to smart development against flood risk

Any questions?

Where to go for...

INFEQ



Online Project Information



- **Project Website**

- <https://www.agriculture.ks.gov/divisions-programs/dwr/floodplain/mapping/mapping-projects/lists/mapping-projects/lower-neosho>
- Scoping Maps, Project Timeline, Meeting Presentations, Newsletters, Technical Reports, Web Review Map

- **Web Review Map**

- <https://gis2.kda.ks.gov/gis/woodson/>
- Draft Floodplain Review

- **Story Maps**

- Project Info
- “Floodplain Current”: Mapping Process ‘Nuts and Bolts’

Base Flood Elevation Portal



Kansas Base Flood Elevation Portal

[Home](#)

[About](#)

[Help](#)

Portal Registration

First Name

Last Name

User name

Title

Phone

Email Address

Address

City

Zip

State

[Register](#)

For Zone A floodplains, you can request BFE Data. Keep in mind that the data is still subject to change.

Contact Information



KDA

Tara Lanzrath, CFM

Tara.Lanzrath@ks.gov

D: 785-296-2513

M: 785-276-9359

Floodplain Mapping Coordinator

Joanna Rohlf, GISP, CFM

Joanna.Rohlf@ks.gov

D: 785-296-7769

Floodplain Mapping Specialist

William Pace, CFM

William.Pace@ks.gov

D: 785-296-5440

Floodplain Mapping Specialist

Steve Samuelson, CFM

Steve.Samuelson@ks.gov

D: 785-296-4622

M: 785-221-3809

State NFIP Coordinator

Cheyenne Sun Eagle

Cheyenne.suneagle@ks.gov

D: 785-296-0854

NFIP Specialist

Contact Information



Wood

Larry Sample, PE, CFM

Larry.sample@woodplc.com

O: 785-272-6830

M: 785-207-7899

Project Manager

Lisa Tuckwin, GISP, CFM

Lisa.Tuckwin@woodplc.com

O: 785-272-6830

M: 785-806-8391

Lead GIS Analyst

FEMA

Andy Megrail, FAC-P/PM

Andy.Megrail@fema.dhs.gov

O: 816-283-7982

M: 816-807-3014

Regional Project Officer



wood.



FEMA

And now...

*We are going to show you how
to make comments and review
your community's map*

Any questions first?