

Lower Neosho Custom Watershed Discovery Meeting

April 15, 2020

While we are waiting, please enter your name, email, and
community in the chat box!



wood.



*Thank you for joining us today!
Your input is very important to this work.*

Rules of the Road

- ▶ Attendees will be muted during the presentation, to help eliminate background noise.
- ▶ Check out the chat to ask questions during the presentation! Or feel free to “raise your hand.” We will pause for questions at various stopping points and have several poll questions.
- ▶ If you want to share your video, please do!
- ▶ For technical difficulties: send a private chat to Joanna Rohlf; or email Joanna.Rohlf@ks.gov
- ▶ We’ll be recording this webinar for those who aren’t able to attend today.

Kansas Department of Agriculture

Tara Lanzrath, CFM -
Floodplain Mapping Coordinator

Joanna Rohlf, CFM -
Floodplain Mapping Specialist

William Pace, CFM -
Floodplain Mapping Specialist

Steve Samuelson, CFM -
State NFIP Coordinator



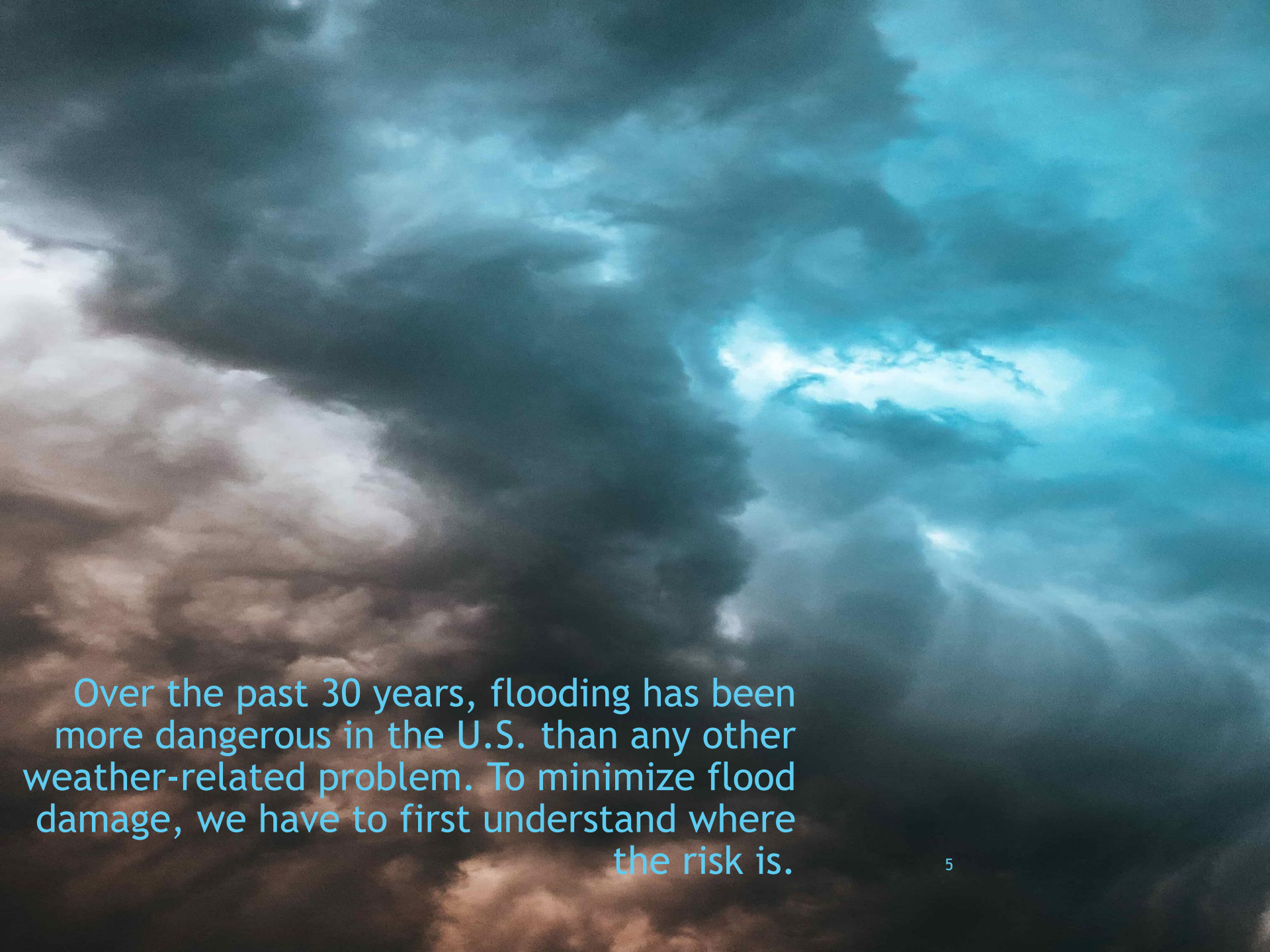
Wood Environment & Infrastructure Solutions

Joe File, PE, CFM - Senior Associate / Program Manager

Maria Neeland PE,CFM - Project Manager

FEMA - Region VII

Andy Megrail - Regional Project Officer



Over the past 30 years, flooding has been more dangerous in the U.S. than any other weather-related problem. To minimize flood damage, we have to first understand where the risk is.

Today's Goals

- ▶ Give you an overview of the work ahead and why we do it.
 - ▶ This is the beginning, not the end!
- ▶ Review where we are now and why your input is important.
- ▶ Hear from you:
 - ▶ About your community's flood risk.
 - ▶ About how we might help you reduce risk.



Overview

Why We're Here

- ▶ To develop a complete, current picture of your community's flood hazards and risks to help you better:
 - ▶ Understand how best to reduce that risk;
 - ▶ Plan to reduce the risk and prioritize your efforts; and
 - ▶ Ensure your residents understand their flood risk and what they can do.

Why Have Floodplain Maps?

- ▶ Understand flood risk so communities can make informed planning decisions.
- ▶ Determine where flood insurance is needed and rate its cost.
 - ▶ Flood Insurance Rate Map (FIRM)
- ▶ Provide the basis for updating community floodplain management ordinances.
 - ▶ **These ordinances are your tool for reducing your community's vulnerability to flood risk.**

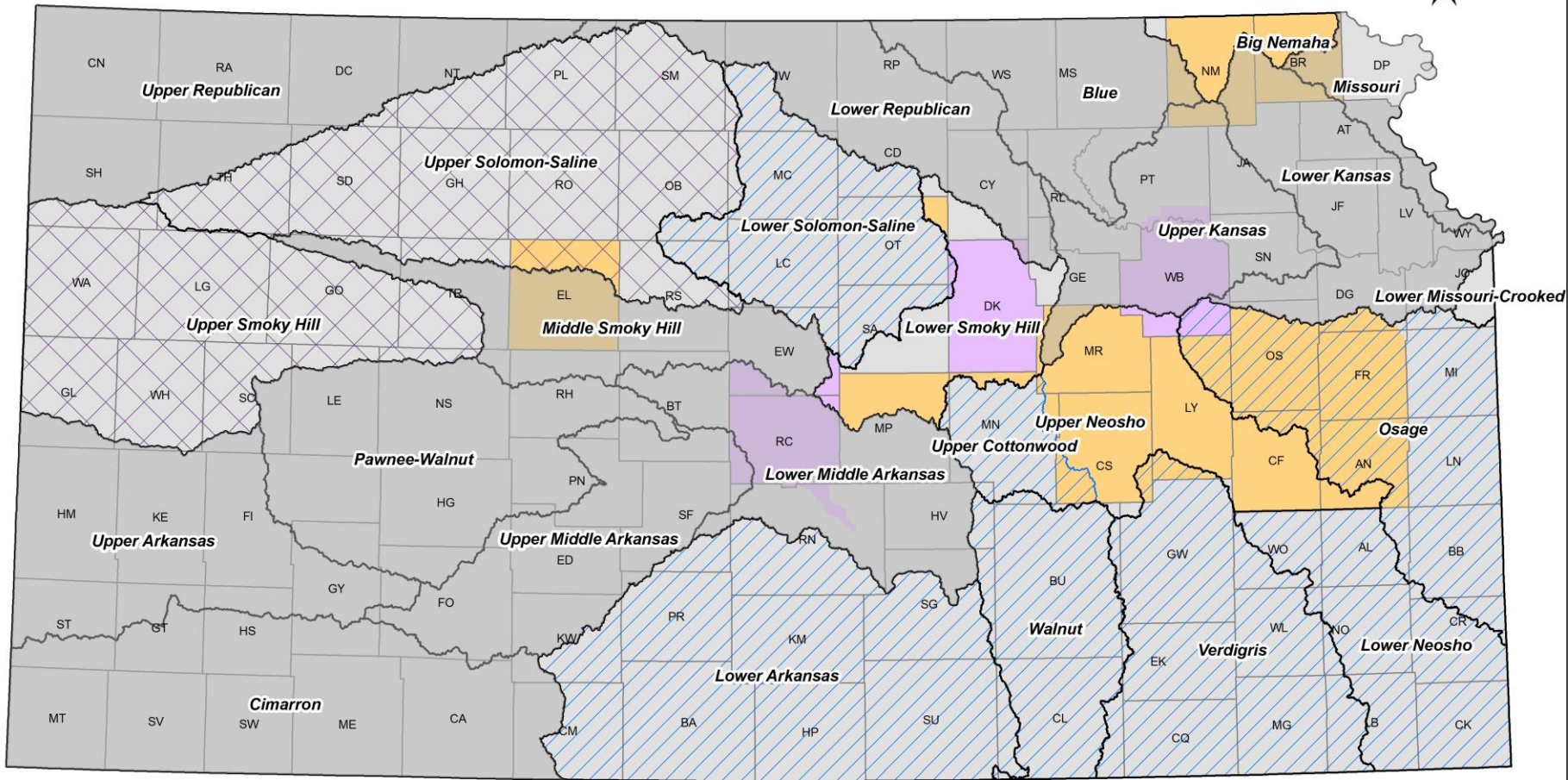
FEMA Floodplain Mapping Program

- ▶ Risk Mapping Assessment and Planning.
- ▶ Supports the National Flood Insurance Program (NFIP). Performed on a watershed basis.
- ▶ Consists of both Regulatory & Non-Regulatory Products.
- ▶ Through RiskMAP, we provide updated floodplain maps, as well as other (free!) data and tools that can help you plan to reduce your community's risk.

Planning: The “P” in Risk MAP

- ▶ The flood risk data from this work can - and should - inform your regional Hazard Mitigation Plan (HMP).
- ▶ Common themes in Region H HMP:
 - ▶ Identify and seek additional methods of financial and technical assistance for hazard mitigation projects.
 - **We Can Help with Technical Assistance!**
 - ▶ Acquire or conduct structural remediation of floodprone properties.
 - ▶ Study and implement drainage issues in floodprone areas and make recommendations for flood control measures, flood management procedures, and low-water crossing improvements.

Current Floodplain Mapping Projects and Custom Watersheds



March 3, 2020

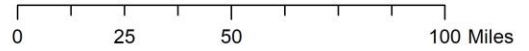
Project Status

- Draft
- Preliminary

Watershed Projects

- Custom Watersheds (labeled)
- FY 20 BLE - Proposed
- FY18 BLE Projects - Data Available
- FY19 BLE* - Starting Development

*Not all watershed areas will be included. Please check with KDA for details.



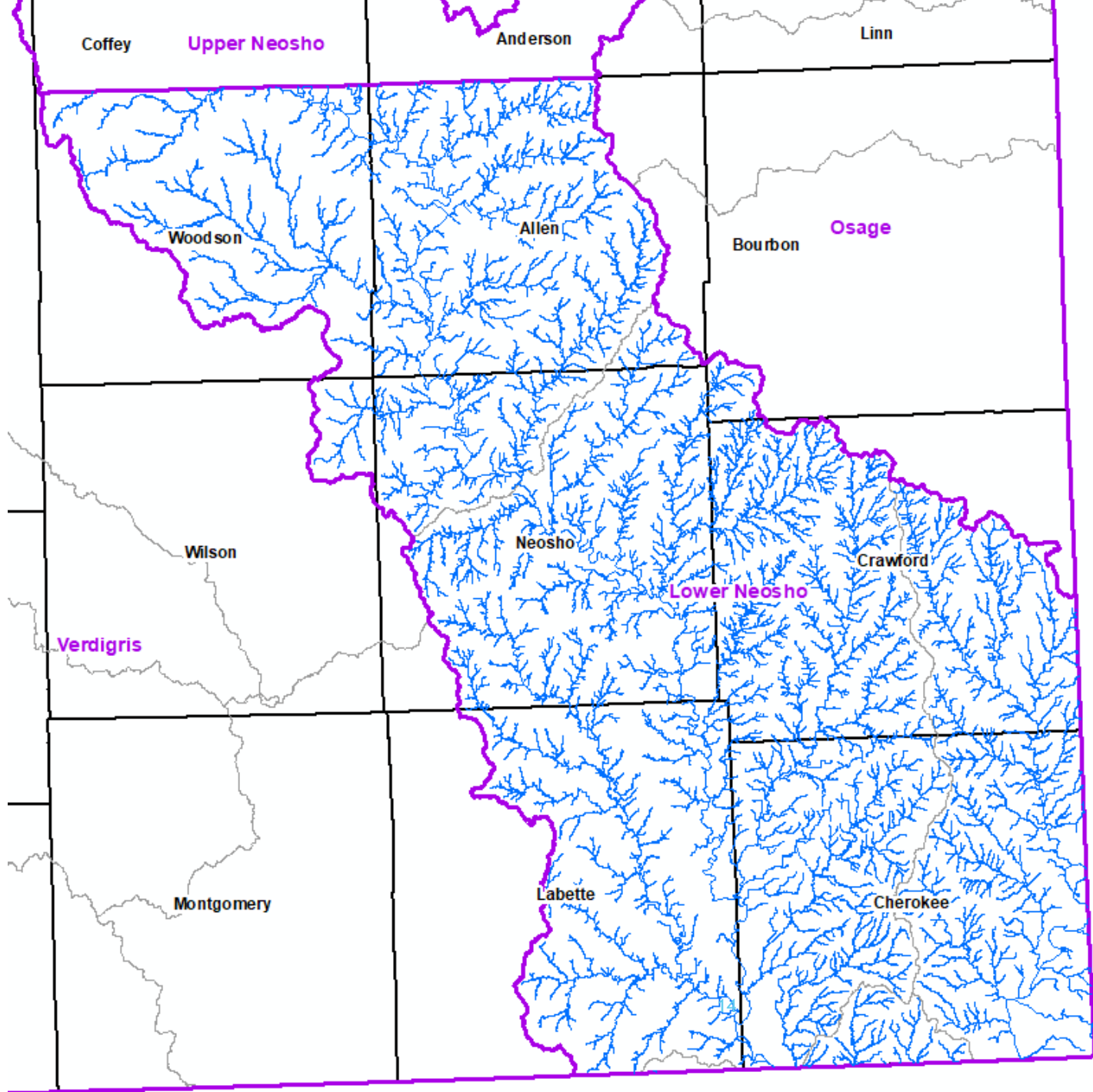
What We've Done To Date

- ▶ Project Kickoff & Initial Map Review
 - ▶ Two Meetings - November 19, 2019
 - ▶ Community Review of Base Level Engineering (BLE) data

BLE Study Area

— Study Lines

*BLE Floodplains are Complete for this Study Area





Lower Neosho Custom Watershed - Initial Base Level Engineering (BLE) Floodplain Data.

Please note that this data is an early draft and is not to be considered best available in all locations. To request a Base Flood Elevation, please use the [BFE Portal](#).



En

Legend

Floodplain Data

Draft BLE Floodplains 11-18-2019



Comments



Layers (Click to expand)

Editor

Leave Comment

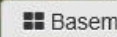
Draw

Measurement

Print

Directions

Google Street View



Basema



Base Flood Elevation Portal



Kansas Base Flood Elevation Portal

[Home](#)

[About](#)

[Help](#)

Portal Registration

First Name

Last Name

User name

Title

Phone

Email Address

Address

City

Zip

State ▼

[Register](#)

For Zone A Floodplains, you can request BFE Data. Keep in mind, BLE data is subject to change.

Where We Are Now and What We've Learned to Date



Where We Are Now: DISCOVERY

This is one of the most important phases of our work, where we:

- ▶ Work with you to examine existing information about local flood hazards;
- ▶ Identify what new data we might need to accurately update your flood risk; and
- ▶ Determine, with you, where mitigation (risk reduction steps) makes sense for your community.

NFIP Status Update

The National Flood Insurance Program (NFIP) allows you to reduce the physical and financial impacts of flooding on your home or business.

NFIP Participation Status

▶ Allen County- yes (*25 Policies*)

▶ Cities

▶ Bassett- no

▶ Elsmore- no

▶ Gas- yes (*0 Policies*)

▶ Humboldt- yes (*5 Policies*)

▶ Iola- yes (*60 Policies*)

▶ La Harpe- yes (*0 Policies*)

▶ Mildred- no

▶ Moran- yes (*0 Policies*)

▶ Savonburg- no

NFIP Participation Status

- ▶ Cherokee County- yes (*54 Policies*)
- ▶ Cities
 - ▶ Baxter Springs- yes (*11 Policies*)
 - ▶ Columbus- yes (*8 Policies*)
 - ▶ Galena- yes (*1 Policy*)
 - ▶ Lowell- no
 - ▶ Riverton- no
 - ▶ Roseland- no
 - ▶ Scammon- yes (*2 Policies*)
 - ▶ Weir- yes (*2 Policies*)
 - ▶ West Mineral- yes (*0 Policies*)

NFIP Participation Status

▶ Crawford County- *yes (66 Policies)*

▶ Cities

▶ Arma- *yes (1 Policy)*

▶ Arcadia- *yes (1 Policy)*

▶ Cherokee- *yes (1 Policy)*

▶ Chicopee- no

▶ Franklin- no

▶ Frontenac- *yes (1 Policy)*

▶ Girard- *yes (0 Policies)*

▶ Hepler- *yes (0 Policies)*

▶ McCune- *yes (0 Policies)*

▶ Mulberry- no

▶ Pittsburg-*yes (52 Policies)*

▶ Walnut- no

NFIP Participation Status

▶ Labette County- yes (*45 Policies*)

▶ Cities

▶ Altamont- yes (*0 Policies*)

▶ Bartlett- no

▶ Chetopa- yes (*4 Policies*)

▶ Edna- yes (*0 Policies*)

▶ Labette- no

▶ Mound Valley- yes (*1 Policy*)

▶ Oswego- yes (*1 Policy*)

▶ Parsons- yes (*64 Policies*)

NFIP Participation Status

- ▶ Neosho County- yes (*34 Policies*)
- ▶ Cities
 - ▶ Chanute- yes (*38 Policies*)
 - ▶ Earlton- no
 - ▶ Erie- yes (*38 Policies*)
 - ▶ Galesburg- yes (*0 Policies*)
 - ▶ Stark- no
 - ▶ St. Paul- yes (*0 Policies*)
 - ▶ Thayer- no

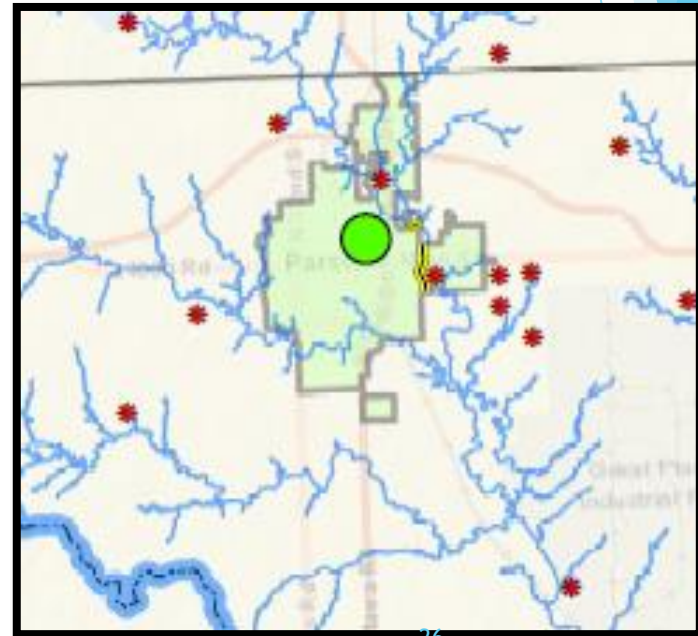
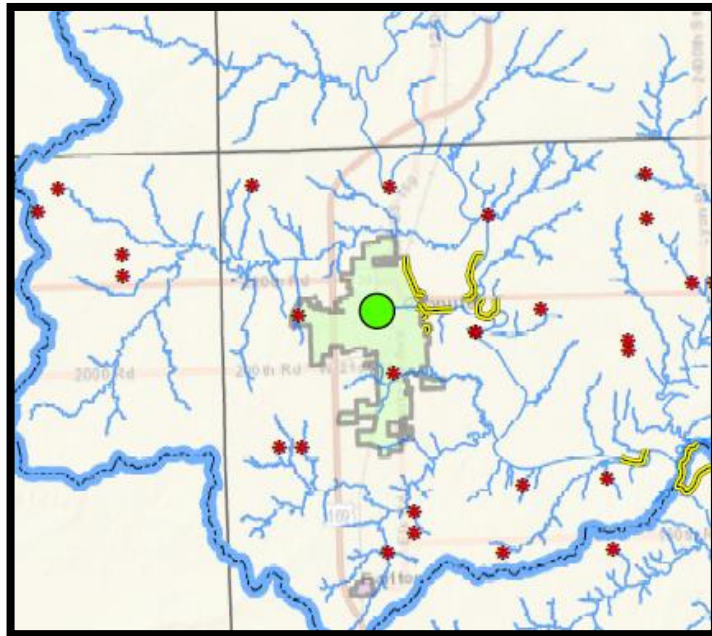
NFIP Participation Status

- ▶ Woodson County- yes, but never mapped
- ▶ Cities
 - ▶ Neosho Falls- yes (*1 Policy*)
 - ▶ Piqua- no
 - ▶ Toronto- yes (*0 Policies*)
 - ▶ Yates Center- yes (*0 Policies*)

Repetitive Loss Structures

Insurable building for which 2 or more claims of more than \$1,000 were paid by the NFIP in a 10-year period. Four clusters in this area.

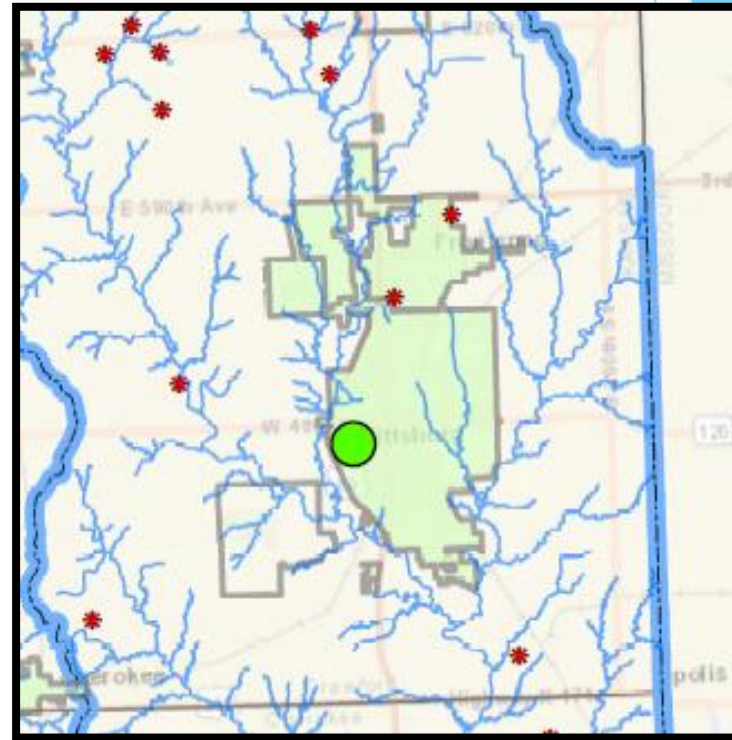
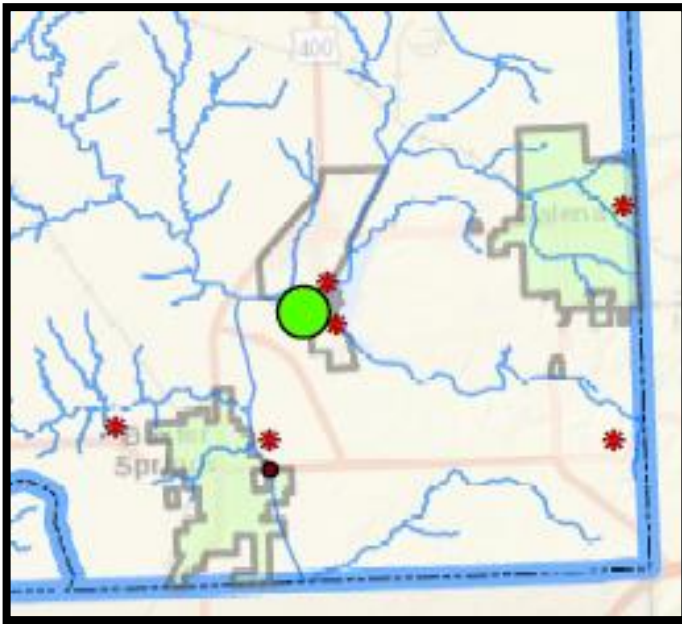
- ▶ One cluster in Chanute and one cluster in Parsons



● Repetitive Loss Clusters

Repetitive Loss Structures, Continued

- ▶ One cluster in Riverton and one cluster in Pittsburg



● Repetitive Loss Clusters

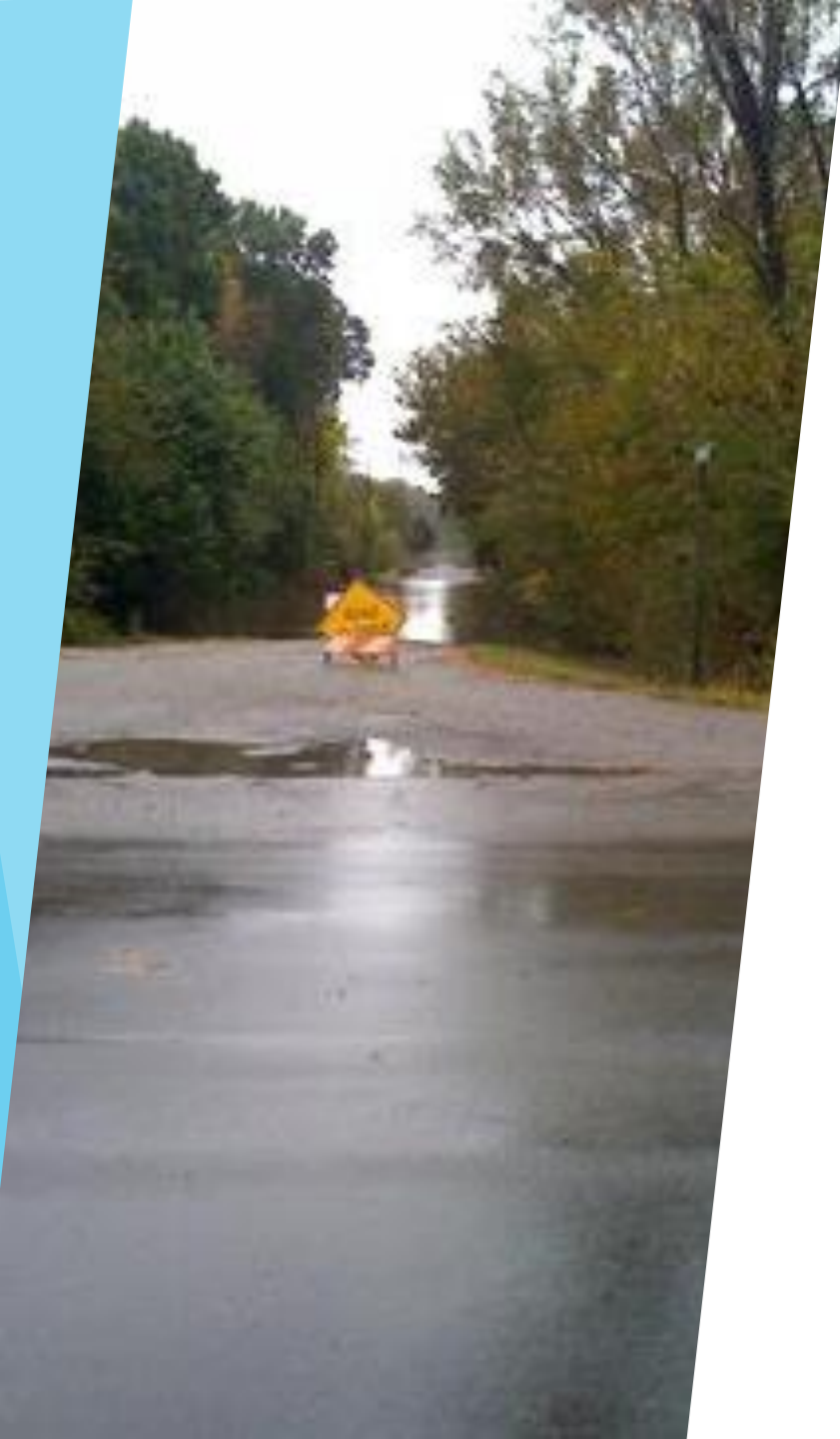
Information You Can Provide

- ▶ Updated aerial imagery
 - ▶ We typically use the latest imagery from the National Agriculture Imagery Program (NAIP)
- ▶ Survey or as-built plan information
 - ▶ Bridge or culvert openings
 - ▶ Channel information
- ▶ Any revisions approved for your previous map
 - ▶ Letters of map revision or amendments (LOMRs/LOMAs)
- ▶ Any information you have about past flooding!
Including high water marks.



How We Can Help

“Mitigation Technical Assistance”



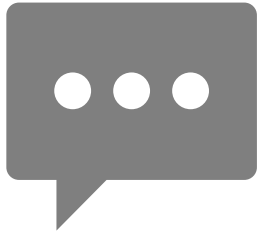
How are your
community's
daily activities
impacted when
it floods?

We are asking this question for two reasons:

1. If you've been impacted by flooding, we want to know WHERE that happened. This helps truth-test the engineering analysis
2. Depending on how and where your community is being impacted by flooding, we might be able to help.



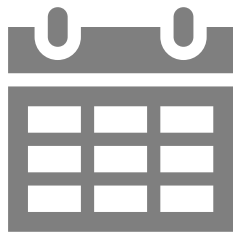
We want to help!



- ▶ Step 1: Explain what you need help with.



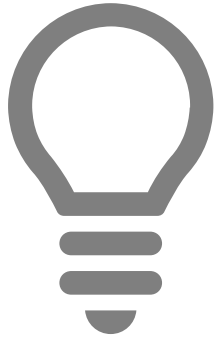
- ▶ Step 2: We determine if it's something we can support.



- ▶ Step 3: If we can support it, we'll work with you to put together a plan and a timeline.

Guidelines:

- ▶ We want to identify what help is needed NOW, so that we can plan accordingly.
- ▶ Ideally, we will do this work over the next 1-3 years.
- ▶ We can't pay for “the thing” itself (i.e., the installation of a new culvert or retention basin).
- ▶ We need your community to be invested in moving a project forward.



Some Ways We Can Help

- ▶ Use our engineering data to show you what types of projects could reduce your floodplain.
- ▶ If you are putting together a grant application for a project, we could help you with the Benefit-Cost Analysis (BCA).
- ▶ We can provide risk assessments for structures in your community to help property owners understand the need for flood insurance, or to help you better protect important public buildings.
- ▶ We can help you explain all or some of this to your community members.

[Kansas Floodplain Map Viewer](#)

[LOMC Search](#)

[Mapping Projects](#)

[Technical Assistance](#)

[Home](#) > [Divisions & Programs](#) > [Division of Water Resources](#) >

[Floodplain Management](#) > [Mapping](#) > [Technical Assistance](#)

Technical Assistance

TECHNICAL ASSISTANCE PROJECTS

- Gypsum
- Hoisington
- Solomon
- South Hutchinson
- Topeka

TECHNICAL ASSISTANCE INFORMATION

FEMA Funds for technical assistance projects have come available in recent Cooperating Technical Partner (CTP) funding cycles. These projects do not include funding for construction of projects, but they can be utilized for modeling mitigation scenarios for possible projects. These funds can be applied for grant-related purposes, ordinance or code support, engineering and analysis, planning, outreach and education. Communities within Kansas can apply for Technical Assistance support through KDA, though priority will be given where there are active [mapping projects](#). For questions, please contact Tara Lanzrath, by phone at 785-296-2513 or [email](#).

[Technical Assistance Request Fillable Form](#)

You can visit the KDA website for more information, including a link to a fillable request form:
<https://www.agriculture.ks.gov/divisions-programs/dwr/floodplain/mapping/technical-assistance>



Ideas on How We Can Help

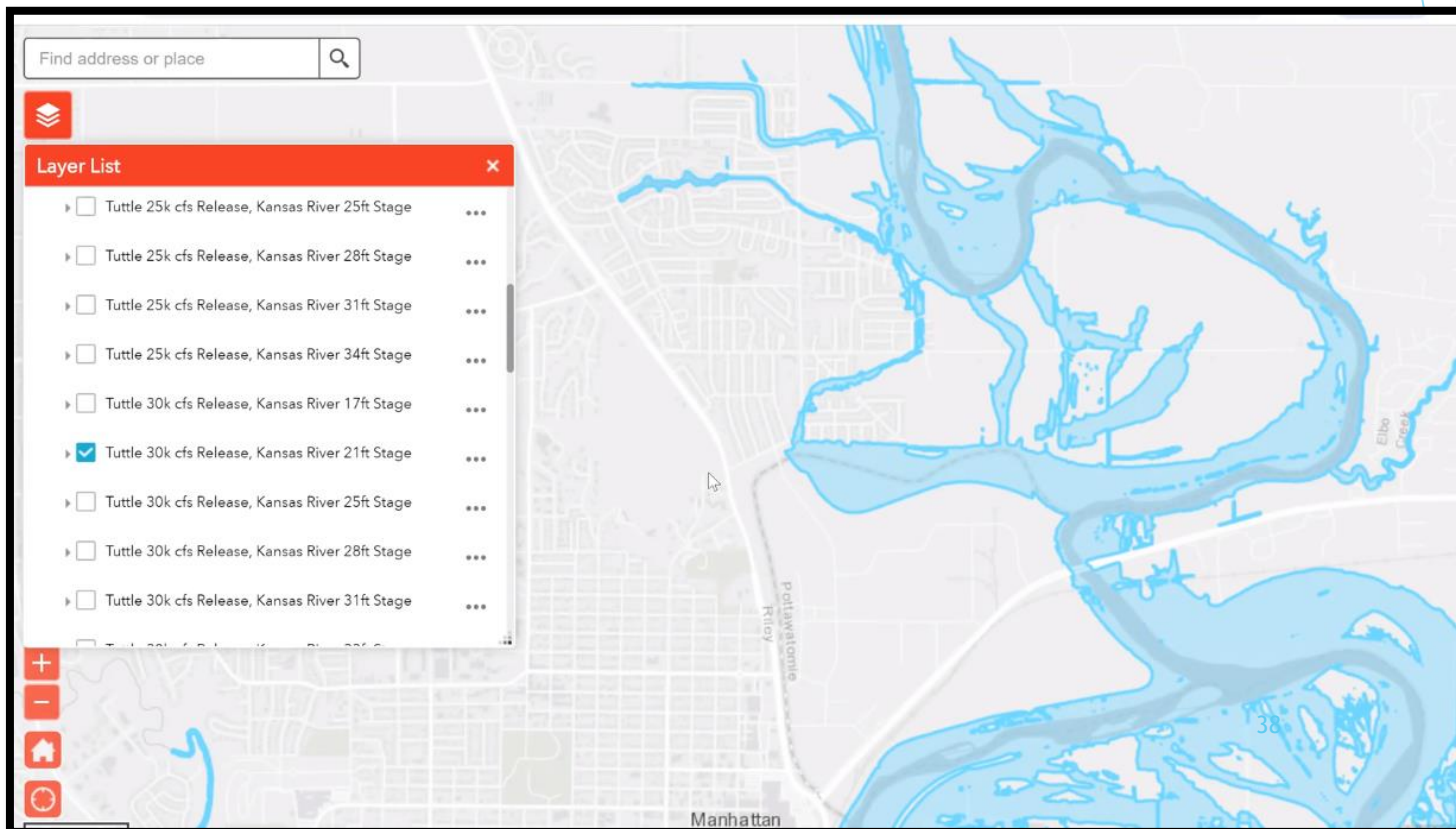
Help Address Existing Problems

- ▶ During the November meeting, there was concern regarding recent flooding along a tributary on the north side of Humboldt due to growth in the area.
- ▶ Could evaluate possible alternatives for reducing the flood impact in this area.



Share Flooding Scenarios

- ▶ Could model flood inundation scenarios for a variety of releases from John Redmond Reservoir for use in emergency planning and response.



Support Neighborhood Revitalization Plans

- ▶ There are neighborhood revitalization plans in place for:
 - ▶ Cherokee County, Labette County, City of Chanute
- ▶ Consider whether floodproofing or green infrastructure could help here.
 - ▶ Providing support for ongoing planning efforts is a priority.

County Neighborhood Revitalization Plan (CNRP)

County Neighborhood Revitalization:

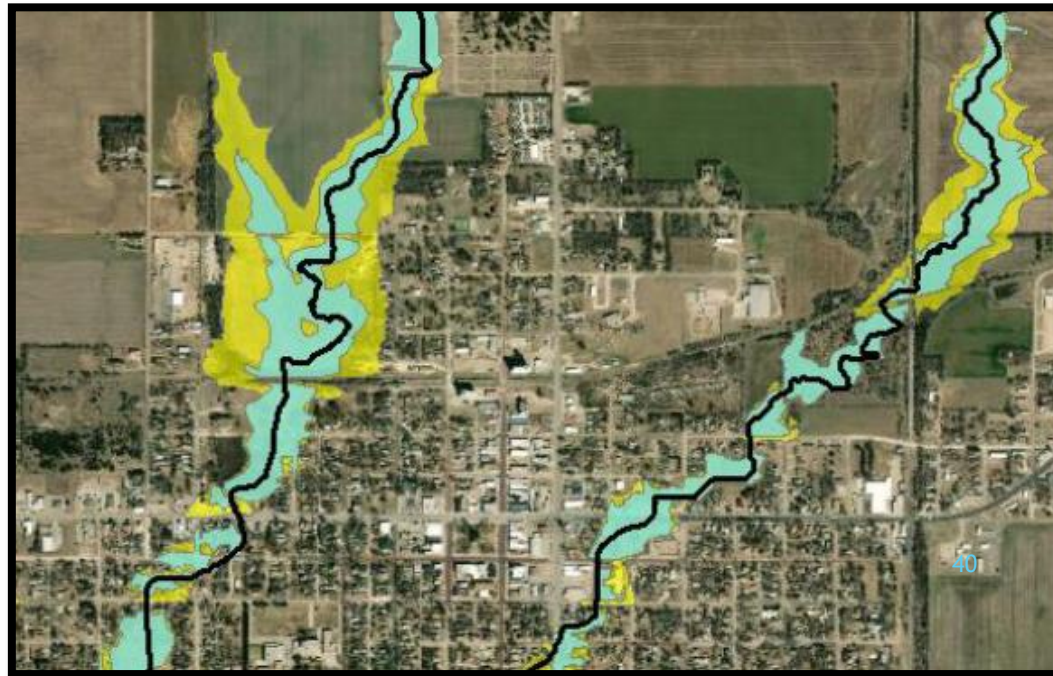
This plan is intended to promote the revitalization of the area of Labette County, Kansas through the rehabilitation, conservation or redevelopment of the area in order to protect the public health, safety or welfare of the residents of the county.

This program is designed for remodel or new construction of a property such as new addition to an existing structure, new structure, or interior remodel and etc.

- Some renovations can be considered maintenance of a property such as a roof, painting, and etc.
- Residential fencing, and Residential driveways where vehicles are parked are not considered for Ad Valorem taxes.

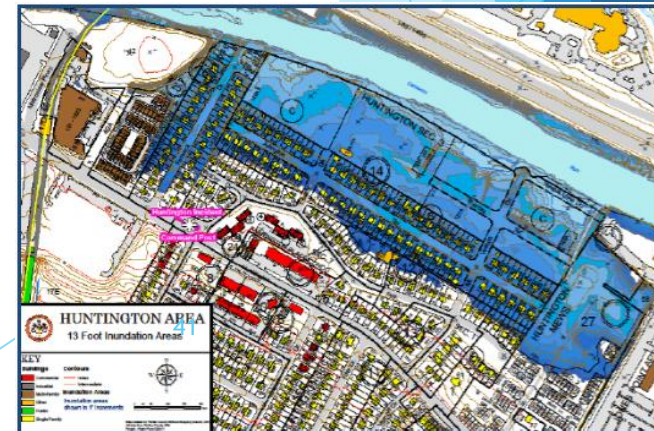
Provide Ideas for How to Reduce Flooding

- ▶ Could model flood reduction scenarios for targeted areas of known flooding and impacts to structures.
- ▶ Could analyze flood impacts from blockages at culverts.



Support for the Community Rating System (CRS) Program

- ▶ The City of Humboldt is enrolled in the CRS Program.
 - ▶ Could assist CRS communities with required mapping associated with Activity 610- Flood Warning and Response.
 - ▶ Would include flood stage forecast maps for use in flood threat recognition system.
 - ▶ Would include assistance completing necessary documents.
 - ▶ Would result in additional CRS points for community.



Support Participation in CRS

- ▶ Assistance with Community Rating System (CRS) Participation:
 - ▶ Under the CRS, flood insurance premium rates are discounted to reward community actions for exceeding the minimum NFIP standards.
 - ▶ Could assist communities with application, documentation of credit points, and program improvement.

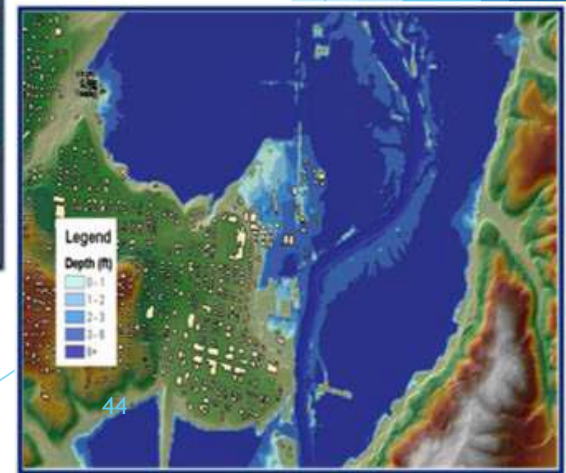
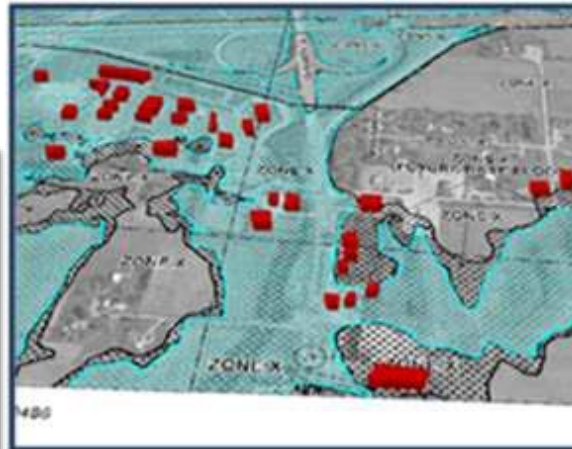
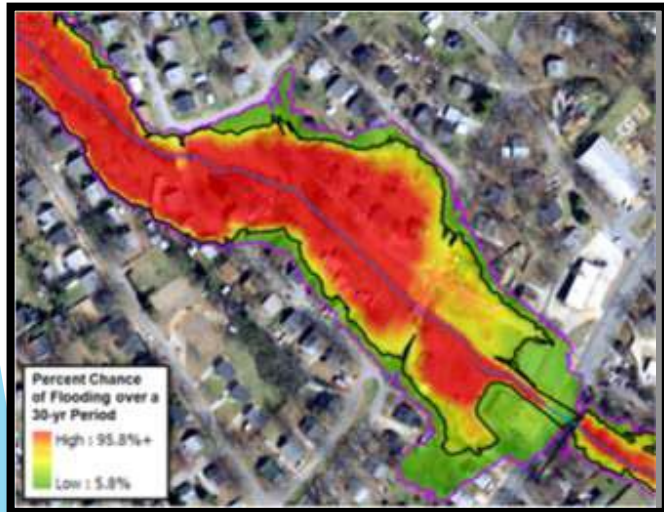
Support Interagency Communications

- ▶ During the November meeting, there was concern regarding communications with the USACE during 2019 flood events.
- ▶ Could develop a communication plan with key stakeholders to utilize during a flooding event.

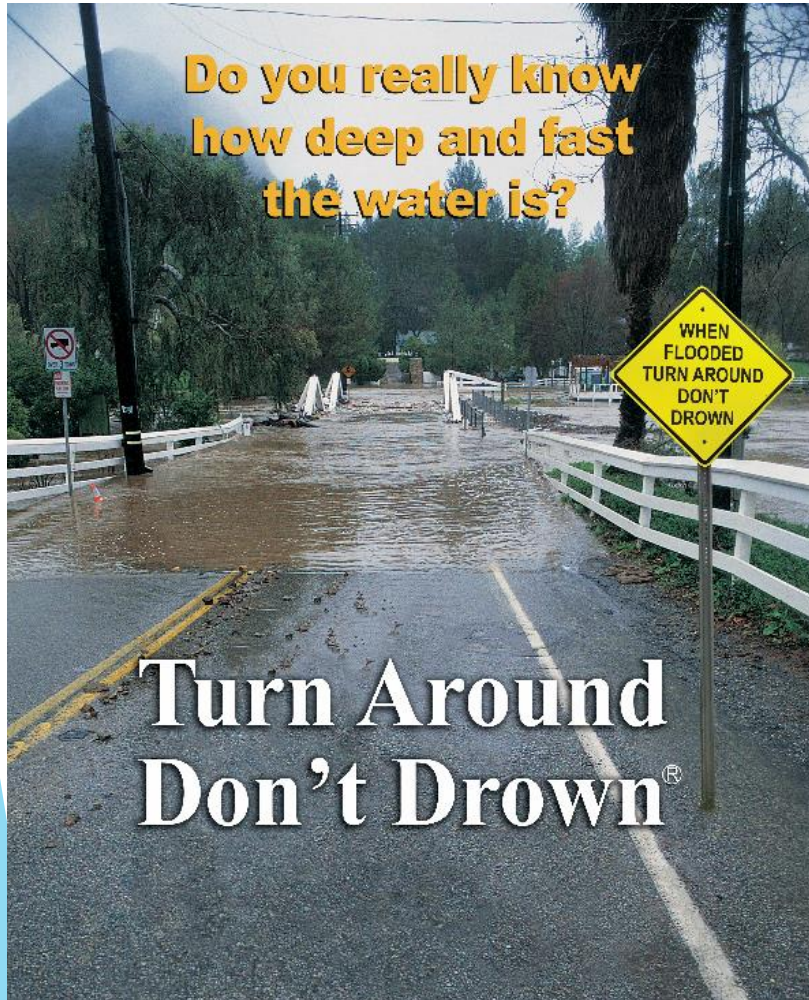


Provide Training

- ▶ Could provide trainings or workshops for Geographic Information Systems (GIS) staff on ways to effectively use the data that is generated as part of the modeling and mapping.




Provide Education and Outreach



ROAD
CLOSED
AHEAD

STEER CLEAR *of*
FLOODED ROADS

- Never drive on flooded roads – almost half of flood deaths happen in vehicles.
- 6 inches of water is enough to cause you to lose control of your vehicle.
- If you encounter flood waters on a roadway, Turn Around, Don't Drown®.

 FEMA

Provide Education and Outreach



Potential Technical Assistance Ideas

Education Outreach



Any ideas?



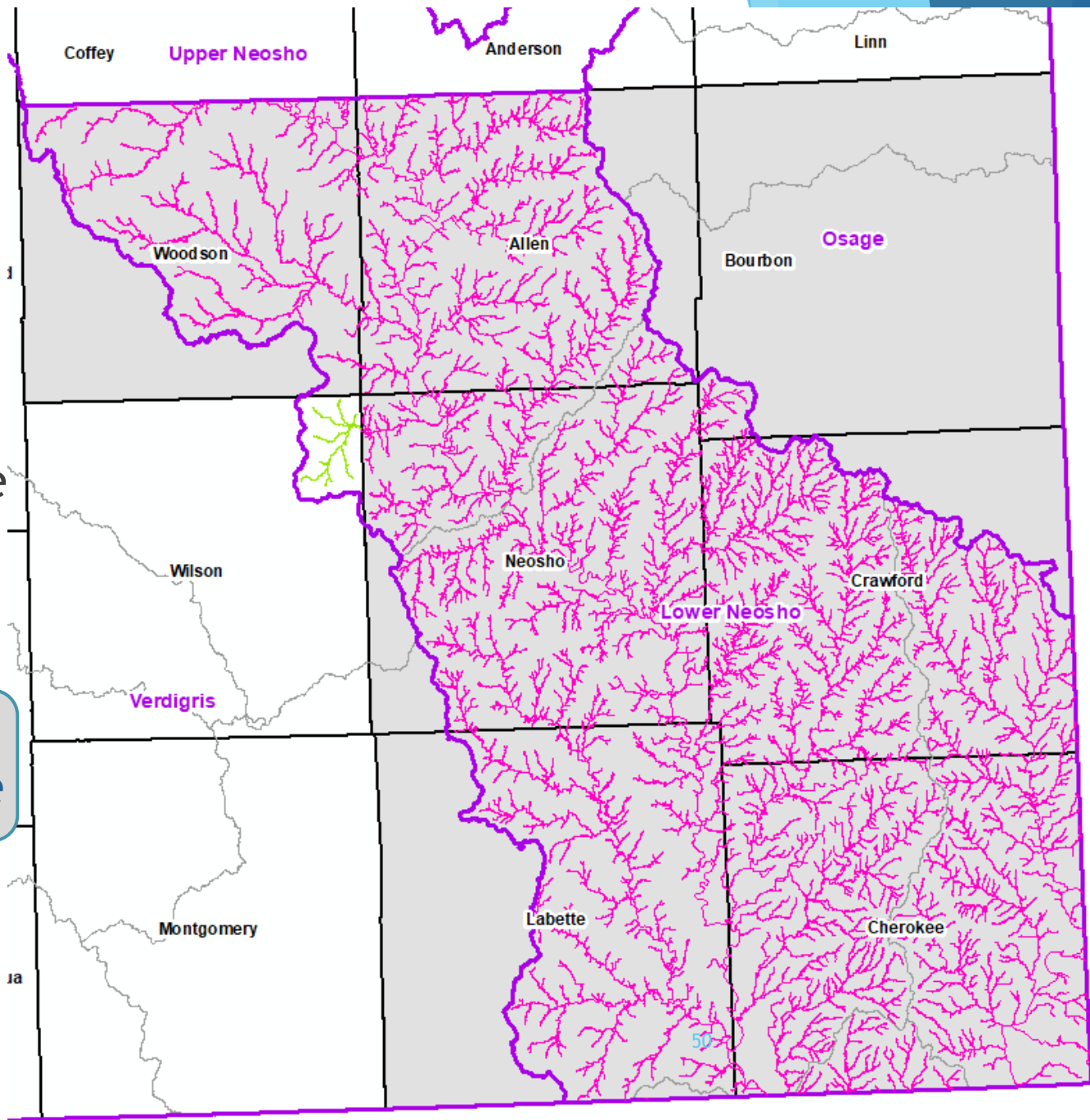
A dramatic, high-contrast photograph of a stormy sky. Dark, heavy clouds dominate the upper right, while a bright light source, likely the sun, breaks through the clouds on the left, creating a strong lens flare and illuminating the scene. A jagged lightning bolt is visible in the lower right corner, striking downwards. The overall mood is intense and powerful.

Preview of the Planned Work

Planned Regulatory Updates

- Planned Update
- No Planned Update

* Regulatory updates will be county-wide



Future Project Information

- ▶ As we proceed with the planned regulatory updates, we will share the following:
 - ▶ Draft Discovery Report sharing all of the data we gather in preparation for the Discovery meeting - would like comments back by May 15, 2020.
 - ▶ Next project phase of Data Development will be funded this Fall. This will enhance the initial floodplain, or BLE, data.
 - ▶ We will notify the Chief Executive Officers and Floodplain Managers in each jurisdiction of the modeling we will use in your community and provide a 30-day comment period (SID 620 notifications).
 - ▶ Scoping Maps are available on the Project Web Page for your review.



Recap

Goals and Your Role in the Process

Ultimate Project Goals

- ▶ Develop a complete, current picture of your community's flood hazards and risks.
- ▶ Incorporate your local knowledge and feedback.
- ▶ Help communities and residents better understand and prepare for their flood risk.
- ▶ Identify opportunities to reduce flood risk and support them where we can.

What Should You Do Next?

▶ Provide data

- ▶ Provide any existing data (imagery, surveys, plans, LOMRs, high water marks, etc.)
- ▶ Provide information on drainage studies, stormwater plans, capital improvement plans, upcoming projects.
- ▶ Provide any survey or as-built plan information for newly developed areas that have been elevated since the date of the LiDAR (2012-2013). We hope to have 2018 LiDAR soon.

▶ Talk to us about how we can help

- ▶ Do you have a Technical Assistance Request?
- ▶ Do you want to talk to one of us to help you formulate a request?
- ▶ Is there someone else in your community we should follow up with?

Key Takeaways

- ▶ This process is going to take time.
- ▶ Your involvement will help us produce better maps!
 - ▶ Get the word out and encourage participation in this project.
 - ▶ Review information as it becomes available.

DON'T HESITATE TO CALL, WE ARE AVAILABLE

Stay Informed

▶ Email List

- ▶ Get us names, addresses, and titles
- ▶ Will be main source of project updates

▶ Project Updates

- ▶ Minimum of quarterly
- ▶ When important milestones are reached
- ▶ When action is necessary (reminders)

▶ Meetings

- ▶ Five planned in-person meetings
 - ▶ Kickoff (**DONE**), Discovery Meeting (**Today!**), Flood Risk Review, Open House, Post-Preliminary CCO meeting
- ▶ Others, as needed

Online Project Information

▶ Project Website

- ▶ Scoping Maps, Project Timeline, Meeting Presentations, Newsletters, Technical Reports, Web Review Map
- ▶ <https://www.agriculture.ks.gov/divisions-programs/dwr/floodplain/mapping/mapping-projects/lists/mapping-projects/lower-neosho/>

▶ Web Review Map

- ▶ Review of Base Level Engineering (BLE) data
- ▶ http://gis2.kda.ks.gov/gis/lower_neosho/
 - ▶ This link will not be public facing until the project has been through Data Development

▶ Story Maps

- ▶ Project Info
- ▶ “Floodplain Current”: Mapping Process ‘Nuts and Bolts’



Flood Risk and Mitigation Discussion

KDA - Contact Information

Tara Lanzrath, CFM -

Tara.Lanzrath@ks.gov

D: 785-296-2513 M: 785-276-9359

Floodplain Mapping Coordinator

Joanna Rohlf, CFM -

Joanna.Rohlf@ks.gov

D: 785-296-7769

Floodplain Mapping Specialist

William Pace, CFM -

William.Pace@ks.gov

D: 785-296-5440

Floodplain Mapping Specialist

Steve Samuelson, CFM -

Steve.Samuelson@ks.gov

D: 785-296-4622 M: 785-221-3809

State NFIP Coordinator

Wood - Contact Information

Joe File, PE, CFM -

joe.file@woodplc.com

O: 785-272-6830 M: 785-554-9108

Senior Associate / Program Manager

Maria Neeland, PE, CFM -

maria.neeland@woodplc.com

D: 785-414-3127 M: 785-410-7499

Project Manager

FEMA - Contact Information

Andy Megrail, FAC-P/PM -

Andy.Megrail@fema.dhs.gov

O: 816-283-7982 M: 816-807-3014

Regional Project Officer