

# **Rattlesnake Creek Basin**

## **Water Conservation Area Management Plan**

This Management Plan for the Rattlesnake Creek Basin Water Conservation Area (RCB WCA), effective the 1<sup>st</sup> day of January 2025, is by and among the Participants consenting hereto, and such consent shall constitute written consent of the participating Water Right owners to enter into a RCB WCA consent agreement and order with the Chief Engineer of the Kansas Department of Agriculture (KDA), Division of Water Resources (DWR) (“Chief Engineer”). Additional Participants may provide written consent to this Management Plan by appending a separately executed Signature Page attached hereto as Exhibit A.

### **I. Required Plan Elements**

- A. **Geographic Boundaries** – The geographic boundaries of the RCB WCA are the portion of the Rattlesnake Creek Basin that includes the place of use and diversion points for Water Rights that have a response rate to the Rattlesnake Creek above the Zenith Gauge (Connectivity) of at least 10 percent, as reflected in Exhibit D attached hereto, and is identified by the KDA DWR map attached hereto as Exhibit B.
- B. **Finding of Circumstances Specified in K.S.A. 82a-1036(a) through (d)** – Pursuant to K.S.A. 82a-745, a condition listed in K.S.A. 82a-1036(a) exists within the boundaries of the RCB WCA. Based on the model commissioned by Big Bend Groundwater Management District 5 (GMD 5) groundwater levels within the geographic boundaries of RCB WCA have declined and are declining. Pursuant to K.S.A. 82a-1036(e), another condition not listed in K.S.A. 82a-1036, the 2016 Final Report of the Chief Engineer finding impairment of Water Right File No. 7,571, exists that requires regulation in the public interest. The Chief Engineer has also adopted K.A.R. 5-25-4(a), which closes the entire area within the geographic boundaries of the RCB WCA to further new surface water and groundwater appropriations with certain limited exceptions.
- C. **Duration** –
1. ***Initial Term*** – The RCB WCA shall commence January 1, 2025, and have an initial 5-year term, and may be extended by successive 5-year renewal terms. Participants may choose to start their initial term on January 1, 2025, regardless of the date the Participant gives written consent to this Management Plan if the Chief Engineer determines that the Participant has demonstrated that the Participant was managing relevant Water Rights in a manner that complied with the corrective controls specified in this Management Plan on or before that date and did so continuously until the date the Participant gave written consent to this Management Plan. Otherwise, the Participant must begin Participant’s initial term the January 1 following the date the Participant authenticates the Signature Page with corrective controls apportioned accordingly.

2. **Renewal Term** – Any successive renewal term shall not automatically execute and shall only renew upon execution by a Participant and the Chief Engineer of the Renewal Consent Agreement attached hereto as Exhibit C.
3. **Removal from the RCB WCA** – Water Rights subject to this Management Plan may only be removed from the RCB WCA after the written consent of all Participants and approval of the Chief Engineer are given upon a written request by a Participant for removal of a Water Right(s), unless the Water Rights are automatically removed upon a finding of a third violation referenced in paragraph I.E.1. of this Management Plan. Notwithstanding the foregoing, all Participants subject to this Management Plan agree that a change in land or Water Right ownership shall be sufficient justification for withdrawal from an existing agreement prior to expiration of the current term without further consent of Participants. However, the new successor in interest following a change in land or Water Right ownership shall notify the Chief Engineer within 60 days of the change in ownership and of the new owner’s intent to withdraw from the RCB WCA. If such notice is not received, the associated Water Rights shall continue to be enrolled in the RCB WCA and may only be withdrawn by written consent of all Participants.

**D. Goals and Corrective Controls** –

1. **Goals** – The goal of RCB WCA is to reduce streamflow depletions to Rattlesnake Creek above the Zenith Gauge and stabilize groundwater levels to ensure the stability of the water supply within the geographic boundaries for all types of water users.
2. **Corrective Controls** – Consistent with K.S.A. 82a-745(b)(3), the RCB WCA Participants must agree to reduce the permissible withdrawal of groundwater from every Water Right enrolled in the RCB WCA according to the terms contained herein.
  - a. **Compensated Conservation Management Area:**
    - i. **Conditions of Participation** – Water Rights within the geographic boundaries of the RCB WCA and participating in the Central Kansas Water Bank’s Compensated Allocation Management Program (“CAMP”) are eligible to participate in the Compensated Conservation Management Area upon the occurrence of the following two conditions:
      - (I) *First*, the Participant must have deposited at least 55 percent of Participant’s Historic Annual Water Use of the bankable portions of all enrolled Water Rights in CAMP for the entirety of the initial RCB WCA term or any applicable renewal term.
      - (II) *Second*, for the year 2025, all Water Rights must have Connectivity of 70 percent or greater, unless funding is available for participation by less connected Water Rights and the Chief Engineer determines a lower Connectivity level for eligible Water Rights to participate in the Compensated Conservation Management Area. For all successive years, pending the availability of funding, the Chief Engineer

shall determine the Connectivity level of eligible Water Rights to participate in the Compensated Conservation Management Area.

- ii. *Allocation* – The allocation for all Water Rights enrolled in the Compensated Conservation Management Area shall be the Historical Water Use of all Water Rights enrolled in the Compensated Conservation RCB WCA, multiplied by the percentage of the bankable portion of each enrolled water right that has not been enrolled in CAMP, multiplied by 5 years or the number of years in Participant’s initial RCB WCA term when the Participant joins the Management Plan or any applicable renewal term.
  - (I) *Unused Allocations* – Unused Allocations may be carried forward to any renewal period and may be used within the other limitations of this Management Plan.
- iii. *Limitations, Flexibilities, and Past Conservation* –
  - (I) An individual Water Right enrolled in the Compensated Conservation Management Area may exceed its authorized annual quantity in a given year, provided that the annual groundwater withdrawal from any point of diversion shall not exceed 120 percent of the authorized quantity associated with the Water Right for that point of diversion and that the Participant’s total water use under the Management Plan shall not exceed the total aggregate authorized quantity or authorized rate of all the Water Rights the Participant enrolls in an Allocation.
  - (II) A Participant may include Water Rights with 70 percent or greater Connectivity in one Allocation, referred to as Allocation D<sub>1</sub>. If the Chief Engineer approves Water Rights with less than 70 percent Connectivity for the Compensated Conservation Management Area, a Participant may include Water Rights with more than 40 percent connectivity, but less than 70 percent connectivity in a single Allocation, referred to as Allocation D<sub>2</sub>. A Participant’s D<sub>1</sub> Allocation and D<sub>2</sub> Allocation shall not be combined, except that part or all of an Allocation in a greater Connectivity Zone may be transferred to an Allocation in a lesser Connectivity Zone if the transfer otherwise complies with the limitations in this Management Plan. Allocations in a lesser Connectivity Zone may not be transferred to an Allocation in a greater Connectivity Zone. Allocation transfers must comply with any notice or recordkeeping requirements prescribed by the Chief Engineer pursuant to paragraph I.E. of this Management Plan.
  - (III) Participants who have previously implemented reductions in water use resulting in voluntary conservation measures shall include such measures and the implementation dates. Due consideration for such voluntary conservation measures shall be in the form of the lease payments issued to the Water Right owner through CAMP.

**b. Voluntary Conservation Management Area:**

- i. *Conditions of Participation* – All Water Rights within the geographic boundaries of the RCB WCA shall be eligible to participate in the Voluntary Conservation Management Area, except Water Rights with Connectivity levels eligible for the Compensated Conservation Management Area. Water Rights eligible for the Compensated Conservation Area must enroll in the Compensated Conservation Management Area unless all available funding for CAMP is obligated, at which time such Water Rights would be eligible for participation in the Voluntary Conservation Management Area. If a Water Right is enrolled in the Voluntary Conservation Management Area, and its Connectivity factor is later determined eligible for the Compensated Conservation Management Area by the Chief Engineer, the Voluntary Conservation Management Area Allocation shall remain in effect unless transitioned to a Compensated Conservation Management Area. If a Compensated Conservation Management Area Allocation lapses due to unavailability of funding at the end of the RCB WCA initial term, Water Rights in the Compensated Conservation Management Area may be transitioned to a Voluntary Conservation Management Area Allocation in any renewal term.
- ii. *Allocation* – The allocation for all Water Rights enrolled in the Voluntary Conservation Management Area shall be the Historical Water Use of all Water Rights enrolled in the Voluntary Conservation Management Area, multiplied by 85 percent, plus any Past Conservation Allowance, multiplied by 5 years or the number of years in Participant’s initial term when the Participant joins the Management Plan or any applicable renewal term.
  - (I) *Unused Allocations* – Unused Allocations may be carried forward for use in any renewal period and may be used within the other limitations of this Management Plan.
- iii. *Limitations, Flexibilities, and Past Conservation* –
  - (I) An individual Water Right enrolled in the Voluntary Conservation Management Area may exceed its authorized annual quantity in a given year, provided that the annual groundwater withdrawal from any point of diversion shall not exceed 120 percent of the authorized quantity associated with the Water Right for that point of diversion and that the Participant’s total water use under the Voluntary Conservation Management Area shall not exceed the total aggregate authorized quantity or authorized rate of all the Water Rights the Participant enrolls in an Allocation.
  - (II) Water Rights with 70 percent or greater Connectivity must be included in one Allocation, referred to as Allocation C.

- (III) Water Rights with 40 percent or greater Connectivity, but less than 70 percent Connectivity must be included in a separate Allocation, referred to as Allocation B.
- (IV) Water Rights with less than 40 percent Connectivity must be included in a separate Allocation, referred to as Allocation A.
- (V) Separate Allocations shall not be combined, except that part or all of an Allocation in a greater Connectivity Zone may be transferred to an Allocation in a lesser Connectivity Zone if the transfer otherwise complies with the limitations in this Management Plan. Allocations in a lesser Connectivity Zone may not be transferred to an Allocation in a greater Connectivity Zone. Allocation transfers must comply with any notice or recordkeeping requirements prescribed by the Chief Engineer pursuant to paragraph I.E. of this Management Plan.
- (VI) Participants who have previously implemented reductions in water use resulting in voluntary conservation measures shall describe such measures and the implementation dates in the Signature Page attached hereto as Exhibit A. Due consideration shall be given through the formula set forth in paragraph I.D.2.b.ii. and the definition of Past Conservation Allowance found in paragraph I.G.8.

E. **Compliance and Enforcement** – The terms of the RCB WCA shall be monitored and enforced by the Chief Engineer. In addition to annual water use reports required by the Chief Engineer, Participants shall annually report water use by Allocation, as well as any transfers between such Allocations, on such forms that may be required by the Chief Engineer to ensure compliance with this Management Plan.

1. ***Penalties*** – Failing to submit information required by this Management Plan or using water in excess of an allocation prescribed in this management plan shall subject a water right owner to an Order of the Chief Engineer for violation of commensurate provisions of the Kansas Water Appropriation Act, K.S.A. 82a-701, *et seq.*

F. **Conflict of Law** –

1. This Management Plan is, and shall remain, consistent with the Kansas Water Appropriation Act. If any part of the Management Plan is determined by a court of competent jurisdiction to be in conflict with such Act, that part shall be deemed invalid, and the remaining provisions of the Plan shall continue in effect.
2. Participants agree that the Chief Engineer may amend the provisions of the RCB WCA Management Plan and consent agreement to conform to any rules and regulations or requirements of GMD 5 or an order of the Chief Engineer issued pursuant to K.S.A. 82a-1038 or K.S.A. 82a-1041 that result in greater conservation of water resources pursuant to K.S.A. 82a-745(d).

3. Participants agree that that the Chief Engineer may, upon conclusion of an impairment investigation and a finding that this Management Plan is impairing a senior Water Right, suspend, modify, or terminate the RCB WCA pursuant to K.S.A. 82a-745(g).
  - a. If the Chief Engineer issues an Order pursuant K.S.A. 82a-706b and/or K.S.A. 82a-717a curtailing any participating Water Right in the RCB WCA or an Order pursuant to K.S.A. 82a-1038 or K.S.A. 82a-1041 reducing the permissible withdrawal of groundwater of any participating Water Right in the RCB WCA, each participating water right shall be limited to the annual quantity and any multi-year allocation quantity set forth in the Order of the Chief Engineer issued to that water right unless this Management Plan requires reductions in water use that would result in more addition to streamflow in Rattlesnake Creek than that which would result from the Order of the Chief Engineer. However, participants in this Management Plan shall retain the ability to transfer Allocations between connectivity zones in accordance with this Management Plan notwithstanding the issuance of any such Order of the Chief Engineer. Should an Order issued pursuant to K.S.A. 82a-706b and/or K.S.A. 82a-717a subsequently be withdrawn, any Allocation under this Management Plan shall return to its original allocated quantity.

**G. Definitions –**

1. ***Allocation*** – the amount of water available to a Participant during the term of this Management Plan in a given Connectivity Zone.
2. ***Chief Engineer*** – the person appointed to be the Chief Engineer of the Kansas Department of Agriculture, Division of Water Resources pursuant to K.S.A. 74-506d.
3. ***Connectivity*** – the level of stream response of a given Water Right to the Rattlesnake Creek above the Zenith gage as determined by the Chief Engineer and attached hereto as Exhibit D
4. ***Connectivity Zone*** – areas where Water Rights have common Connectivity and delineate separate management areas that require Water Rights to have separate Allocations. The RCB WCA has three Connectivity Zones: 70 percent or greater Connectivity, 40 percent or greater, but less than 70 percent Connectivity, and 10 percent or greater, but less than 40 percent Connectivity.
5. ***Historical Water Use*** – the average annual water used by a Water Right for the period of 2002 through 2021. For any year in which a Water Right exceeded its authorized quantity, the amount of water used shall equal the authorized quantity.
6. ***Irrigation Season Rainfall Evapotranspiration (ISRE) Factor*** – A factor determined by a DWR model applicable to the geographic area of the RCB WCA that adjusts water use for rainfall and evapotranspiration during the irrigation season, which are attached hereto as Exhibit E.

7. ***Participants*** – owners of Water Rights who consent to this Management Plan by executing a Signature Page, attached hereto as Exhibit A, or a Renewal Consent Agreement, attached hereto as Exhibit C, and enter into a consent agreement and order with the Chief Engineer pursuant to K.S.A. 82a-745, and amendments thereto.
8. ***Past Conservation Allowance*** – The quantity of water to be added to a base allocation in the Voluntary Conservation Management Area as due consideration for the previous implementation of voluntary conservation measures during the Historical Water Use period. Such voluntary conservation measures shall include, but not be limited to, removal of end guns, installation of more efficient pivot nozzles, use of soil moisture probes and/or data driven irrigation schedules, conversion of flood irrigation to pivot or subsurface irrigation, or replacement of pivot irrigation with subsurface irrigation. The Past Conservation Allowance to be added to a Voluntary Conservation Management Area Allocation(s) shall be calculated for each applicable Water Right as follow: The average annual quantity of water used during the Historical Water Use period prior to implementation of a voluntary conservation measure less the product of the average annual water use during the Historical Water Use period after implementation of a voluntary conservation measure and the Irrigation Season Rainfall Evapotranspiration Factor for the year voluntary conservation measure was implemented.
9. ***Renewal Consent Agreement*** – a form attached hereto as Exhibit C that must be executed by each Participant that indicates the Participant understands and agrees to renew the terms of this Management Plan for another 5-year term.
10. ***Signature Page*** – a form attached hereto as Exhibit A that must be executed by each Participant that indicates the Participant understands and agrees to the terms of this Management Plan.
11. ***Water Right(s)*** – shall have the meaning subscribed to that term in K.S.A. 82a-701(g) of the Kansas Water Appropriation Act.

## Exhibit A

### *Signature Page*

I hereby agree to the terms of the Rattlesnake Creek Basin Water Conservation Area Management Plan and consent to become a Participant. I acknowledge that I have read and understand the rights, obligations, and potential penalties for breaching such obligations applicable to all Participants.

I further agree to enroll the following Water Rights in the Rattlesnake Creek Basin Water Conservation Area Management Plan:

File Number	Type of Use	Authorized Quantity	Place of Use

### **Historic Water Use:**

*Compensated Conservation Management Area Allocation D<sub>1</sub>:*

File Number	Avg. Annual Use 2002-2021	
<b>Total:</b>		

*Compensated Conservation Management Area Allocation D<sub>2</sub>:*

File Number	Avg. Annual Use 2002-2021	
<b>Total:</b>		

*Voluntary Conservation Management Area Allocation C:*

File Number	Avg. Annual Use 2002-2021	
<b>Total:</b>		



*Voluntary Conservation Management Area Allocation B:*

File Number	Avg. Annual Use 2002-2021	
<b>Total:</b>		

*Voluntary Conservation Management Area Allocation A:*

File Number	Avg. Annual Use 2002-2021	
<b>Total:</b>		

**Past Conservation Allowance:**

*Compensated Conservation Management Area Allocation D<sub>1</sub>:*

File Number	Conservation Practice	Implementation Date of Conservation Practice

*Compensated Conservation Management Area Allocation D<sub>2</sub>:*

File Number	Conservation Practice	Implementation Date of Conservation Practice

*Voluntary Conservation Management Area Allocation C:*

File Number	Conservation Practice	Implementation Date of Conservation Practice	Average Annual Use Prior to Conservation	Average Annual Use After Conservation	ISRE Factor	Allowance per Water Right
Total Allowance:						

*Voluntary Conservation Management Area Allocation B:*

File Number	Conservation Practice	Implementation Date of Conservation Practice	Average Annual Use Prior to Conservation	Average Annual Use After Conservation	ISRE Factor	Allowance per Water Right
Total Allowance:						

*Voluntary Conservation Management Area Allocation A:*

File Number	Conservation Practice	Implementation Date of Conservation Practice	Average Annual Use Prior to Conservation	Average Annual Use After Conservation	ISRE Factor	Allowance per Water Right
Total Allowance:						

**Total Allocation:**

*Compensated Conservation Management Area Allocation D<sub>1</sub>:*

Average Annual Historic Water Use	Conservation Factor – % of bankable portion not enrolled in CAMP	Years Left in RCB WCA Term	Total Allocation

*Compensated Conservation Management Area Allocation D<sub>2</sub>:*

Average Annual Historic Water Use	Conservation Factor – % of bankable portion not enrolled in CAMP	Years Left in RCB WCA Term	Total Allocation

*Voluntary Conservation Management Area Allocation C:*

Average Annual Historic Water Use	Conservation Factor – 85% or less	Years Left in the RCB WCA Term	Total Past Conservation Allowance	Total Allocation

*Voluntary Conservation Management Area Allocation B:*

Average Annual Historic Water Use	Conservation Factor – 85% or less	Years Left in the RCB WCA Term	Total Past Conservation Allowance	Total Allocation

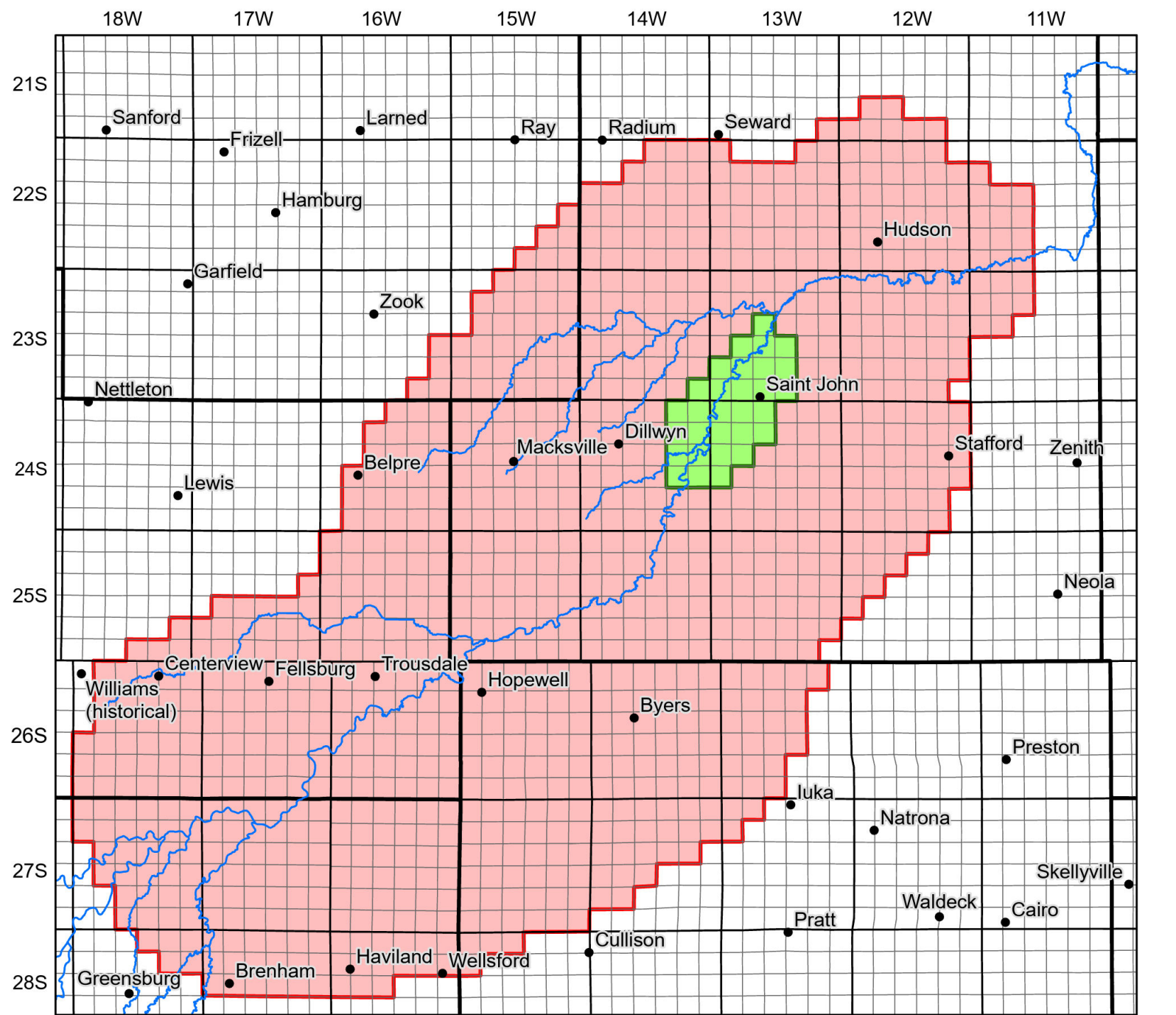
*Voluntary Conservation Management Area Allocation A:*




Average Annual Historic Water Use	Conservation Factor – 85% of less	Years Left in the RCB WCA Term	Total Past Conservation Allowance	Total Allocation

\_\_\_\_\_  
Participant

\_\_\_\_\_  
Date

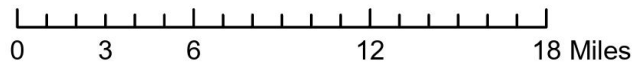
# Rattlesnake Creek Basin Water Conservation Area



-  Rattlesnake Creek and Tributaries
-  Compensated Area (>70% Response)
-  Water Conservation Area (>10% Response)

Section Number Key

6	5	4	3	2	1
7	8	9	10	11	12
18	17	16	15	14	13
19	20	21	22	23	24
30	29	28	27	26	25
31	32	33	34	35	36



Kansas Department of Agriculture  
Division of Water Resources  
October 1, 2024

## Exhibit C

### *Rattlesnake Creek Basin Water Conservation Area Renewal Consent Agreement*

I hereby agree to renew the terms of the Rattlesnake Creek Basin Water Conservation Area Management Plan and consent to remaining a Participant for another 5-year term. I acknowledge that I have read and understand the rights, obligations, and potential penalties for breaching such obligations applicable to all Participants.

I further agree to renew the following Water Rights in the Rattlesnake Creek Basin Water Conservation Area Management Plan:

File Number	Type of Use	Connectivity Factor	Authorized Quantity	Place of Use

### **Historical Water Use:**

*Compensated Conservation Management Area Allocation D<sub>1</sub>:*

File Number	Avg. Annual Use 2002-2021
<b>Total:</b>	

*Compensated Conservation Management Area Allocation D<sub>2</sub>:*

File Number	Avg. Annual Use 2002-2021
<b>Total:</b>	

*Voluntary Conservation Management Area Allocation C:*

File Number	Avg. Annual Use 2002-2021
<b>Total:</b>	

*Voluntary Conservation Management Area Allocation B:*

File Number	Avg. Annual Use 2002-2021
<b>Total:</b>	

*Voluntary Conservation Management Area Allocation A:*

File Number	Avg. Annual Use 2002-2021
<b>Total:</b>	

**Past Conservation Allowance:**

*Compensated Conservation Management Area Allocation D<sub>1</sub>:*

File Number	Conservation Practice	Implementation Date of Conservation Practice

*Compensated Conservation Management Area Allocation D<sub>2</sub>:*

File Number	Conservation Practice	Implementation Date of Conservation Practice

*Voluntary Conservation Management Area Allocation C:*

File Number	Conservation Practice	Implementation Date of Conservation Practice	Average Annual Use Prior to Conservation	Average Annual Use After Conservation	ISRE Factor	Allowance per Water Right
<b>Total Allowance:</b>						

*Voluntary Conservation Management Area Allocation B:*

File Number	Conservation Practice	Implementation Date of Conservation Practice	Average Annual Use Prior to Conservation	Average Annual Use After Conservation	ISRE Factor	Allowance per Water Right
<b>Total Allowance:</b>						

*Voluntary Conservation Management Area Allocation A:*

File Number	Conservation Practice	Implementation Date of Conservation Practice	Average Annual Use Prior to Conservation	Average Annual Use After Conservation	ISRE Factor	Allowance per Water Right
Total Allowance:						

**Total Allocation:**

*Compensated Conservation Management Area Allocation D<sub>1</sub>:*

Average Annual Historic Water Use	Conservation Factor – % of bankable portion not enrolled in CAMP	Years Left in RCB WCA Term	Unused Allocation from Previous Term	Total Allocation

*Compensated Conservation Management Area Allocation D<sub>2</sub>:*

Average Annual Historic Water Use	Conservation Factor – % of bankable portion not enrolled in CAMP	Years Left in RCB WCA Term	Unused Allocation from Previous Term	Total Allocation

*Voluntary Conservation Management Area Allocation C:*

Average Annual Historic Water Use	Conservation Factor – 85% of less	Years Left in the RCB WCA Term	Total Past Conservation Allowance	Unused Allocation from Previous Term	Total Allocation

*Voluntary Conservation Management Area Allocation B:*

Average Annual Historic Water Use	Conservation Factor – 85% of less	Years Left in the RCB WCA Term	Total Past Conservation Allowance	Unused Allocation from Previous Term	Total Allocation

*Voluntary Conservation Management Area Allocation A:*

Average Annual Historic Water Use	Conservation Factor – 85% of less	Years Left in the RCB WCA Term	Total Past Conservation Allowance	Unused Allocation from Previous Term	Total Allocation

\_\_\_\_\_

Renewal Participant

\_\_\_\_\_

Date

## Exhibit D

### *Rattlesnake Creek Basin Water Conservation Area Water Right Connectivity Table*

<u>File Number</u>	<u>Connectivity</u>
18267-D1	89%
19029	86%
24513	84%
15138	84%
44323	84%
45082	84%
16669	83%
32151	83%
37110	83%
37407	83%
19028	82%
21673	82%
33513	81%
20787	80%
25596	80%
19961	80%
37109	80%
28568	79%
29273	79%
36563	79%
36564	79%
47780	79%
15562-D1	79%
33066	79%
39393	79%
10931	78%
19898	78%
34472	78%
21324	76%
11363	76%
20227	76%
16678	75%
20424	75%
21672	75%
20121	75%
20861	75%
15562-D2	75%
32997	75%

16137	73%
17909	72%
31157	72%
9781	70%
16762-05	70%
16762-05	70%
16953	70%
16953	70%
30385	70%
16623	70%
31733	70%
34664	70%
34713	70%
15761	70%
15762	70%
26153	70%
15682	68%
14773	67%
20608	67%
35893	67%
46420	67%
18060	67%
19694	67%
15312	67%
27987	66%
39067	66%
14010	66%
14010	66%
24668	66%
24669	66%
20792-D1	64%
20792-D2	64%
18527	63%
20346	63%
25094	63%
18848	63%
19429	63%
27580	63%
23520	63%
39881	63%
37710	63%
8348	63%
21333	63%



20122	62%
24278	61%
33440	61%
22007	61%
38494	60%
18059	60%
18696	60%
21154	60%
29825	60%
39061	60%
24650	59%
27032	59%
14602	59%
14966	59%
43649	59%
20347	59%
20347	59%
20744	59%
34657	59%
38722	59%
38727	59%
38771	59%
8113	58%
34463	58%
34469	58%
37124	58%
18356-01	58%
18356-01	58%
18356-01	58%
18924	58%
18924	58%
20745	58%
20746	58%
26500	57%
26582	57%
26688	57%
31200	57%
31535	57%
26106	57%
34115	57%
15945	57%
19025	57%
12526	56%

12023	56%
15781	56%
37657	56%
32348	55%
32530	55%
35103	55%
41807	55%
38503	55%
10458	54%
32505	54%
33494	54%
26344	54%
39419	53%
13432	53%
23390	53%
13336	53%
11559	53%
11559	53%
24554	53%
37961	53%
39092	53%
36793	52%
43086	52%
28768	52%
39192	52%
25176	52%
37028	52%
37555	52%
41215	52%
41215	52%
41215	52%
50285	52%
50285	52%
50285	52%
20791	52%
39751	52%
39888	52%
21791	51%
38921	51%
24126	51%
25859	51%
12106	51%
25985	51%

32122	51%
35140	51%
17146	51%
19923	50%
25520	50%
39118	50%
35332	49%
18080	49%
36167	49%
36274	49%
36785	49%
17577	49%
19925	49%
26152	49%
37155	49%
41099	49%
50312	49%
30165	49%
33803	49%
11266	49%
24763	49%
24711	49%
37595	49%
29953	48%
18925	48%
44627	48%
27072	48%
39062	48%
20605	48%
25637	48%
23924	48%
23925	48%
37526	48%
39049	48%
17252	48%
32642	47%
31294	47%
44302	47%
24272	47%
22136	47%
34915	47%
37349	47%
37960	47%

33011	46%
37521	46%
29954	46%
35252	46%
36287	46%
23055	46%
23500	46%
34702	46%
30763	46%
37547	45%
20451	45%
26789	45%
29334	45%
25519	45%
35002	44%
35758	44%
35675	44%
35676	44%
35677	44%
19399	44%
19400	44%
20798	44%
37361	44%
15915	44%
24622	44%
38136	44%
38922	44%
20348	44%
25473	44%
37703	43%
33896	43%
36682	43%
31681	43%
31681	43%
37251	43%
37477	43%
17473	43%
31318	43%
20547	43%
20977	43%
25694	43%
37515	43%
17827	43%

34576	43%
35237	43%
35266	43%
25686	42%
44112	42%
33014	42%
33014	42%
19922	41%
20507	41%
26095	41%
38971	41%
18132	41%
19924	40%
36945	40%
36946	40%
23666	40%
35102	40%
39168	40%
28869	40%
19438	39%
21905	39%
24710	39%
23860	39%
15459	39%
25521	39%
26853	39%
33756	39%
12105	39%
25887	39%
13092	39%
36231	39%
17443	39%
25692	39%
25693	39%
26225	39%
25070	39%
27033	39%
9816	39%
25037	39%
39093	39%
39114	39%
19430	39%
19431	39%

21103	38%
21105	38%
27191	38%
13238	38%
14620-D1	38%
14620-D2	38%
31344	38%
22164	38%
23484	38%
37758	38%
37758	38%
37758	38%
22590	38%
26049	38%
26105	38%
23468	38%
25687	37%
30194	37%
37685	37%
37716	37%
19925-07	37%
35100	37%
41763	37%
26094	37%
36405	37%
17154	37%
19576	37%
23138	37%
37437	37%
15648	36%
26756	36%
20308	36%
20308	36%
20309	36%
20309	36%
27418	36%
17828	36%
17829	36%
37963	35%
27245	35%
19925-07	35%
19925-07	35%
37642	35%

41763	35%
41763	35%
20162	35%
33244	35%
30341	35%
19982	35%
35540	35%
9815	35%
22165	35%
36836	35%
26084	35%
20160	35%
20161	35%
39280	35%
26894	35%
26894	35%
26894	35%
26894	35%
21198	34%
39867	34%
32028	34%
18081	34%
25098	34%
32888	34%
37357	34%
26015	34%
31201	34%
20334	34%
20667	34%
25638	34%
12524	34%
16624	34%
18040	34%
36147	34%
38843	34%
21104	34%
23467	34%
25772	34%
35097	34%
35098	34%
35099	34%
37531	34%
19404	33%

25016	33%
25017	33%
19937	33%
24675	33%
27419	33%
31556	33%
24757	33%
10269	33%
22256	33%
38150	33%
45555	33%
14426	33%
20910	33%
25946	33%
27859	32%
34662	32%
33744	32%
29591	32%
34443	32%
34444	32%
34620	32%
35281	32%
32415	32%
35101	32%
17830	32%
46157	32%
19405	32%
28388	32%
25809	32%
25811	32%
32934	32%
35003	32%
13280	32%
13280	32%
13281	32%
36846	32%
13861	32%
21015	32%
35869	32%
21291	31%
23091	31%
27212	31%
27860	31%



39213	31%
22809	31%
22809	31%
22809	31%
22809	31%
23355-05	31%
13173	31%
20517	31%
24774	31%
37490	31%
37496	31%
26893	31%
34468	31%
25586	31%
37461	31%
15010	31%
18871	31%
18872	31%
20490	31%
21200	31%
24638	31%
24638	31%
34772	31%
20488	30%
32756	30%
38058	30%
21203	30%
21402	30%
31815	30%
33690	30%
16878-04	30%
16878-04	30%
16878-04	30%
16878-04	30%
18873	30%
18874	30%
18875	30%
23355-06	30%
23355-07	30%
22321	30%
22322	30%
22805	30%
27968	30%

20123	30%
23614	30%
19439	30%
15231	30%
15233	30%
20544	30%
33992	30%
15611	30%
25845	30%
25846	30%
31749	30%
31749	30%
33064	30%
20124	30%
20125	30%
20126	30%
20127	30%
12042	30%
14329	30%
25788	30%
7983	30%
10305	30%
25842	30%
22654	30%
34646	30%
24452	30%
26966	30%
21735	30%
39821	30%
39822	30%
39823	30%
16775	30%
20463	30%
23466	30%
26755	30%
20370	30%
12967	29%
18039	29%
14051	29%
18876	29%
35352	29%
35353	29%
14672	29%

31964	29%
34867	29%
35849	29%
12812	29%
34926	29%
29611-D1	29%
29611-D2	29%
31716	29%
29775	29%
32316	29%
21021	29%
34663	29%
7705	29%
32643	29%
18058	29%
26462	29%
28125	29%
28126	29%
30981	29%
17673	29%
29772	29%
32420	29%
35429	29%
13162	29%
15145	29%
15146	29%
21109	29%
26448	29%
34684	28%
36960	28%
20274	28%
22320	28%
27358	28%
31187	28%
12243	28%
32781	28%
15232	28%
36318	28%
23859	28%
37077	28%
16042	28%
16044	28%
29580	28%

26967	28%
33273	28%
25810	28%
25812	28%
19605	28%
19606	28%
34679	28%
25194	28%
29306	28%
34207	28%
34208	28%
28639	27%
13125	27%
18211	27%
16618	27%
28542	27%
29274	27%
14338	27%
16677	27%
20971	27%
26580	27%
34021	27%
36816	27%
37516	27%
14672	27%
25930	27%
28265-01	27%
36628-01	27%
20498	27%
20821	27%
37899	27%
24833	27%
17705	27%
17705	27%
25714	27%
27904	27%
27905	27%
27905	27%
27905	27%
29417	27%
41071	27%
24933	27%
22100	27%

35282	27%
35435	27%
16458	27%
18047	27%
17674	26%
36101	26%
36165	26%
32467	26%
17903	26%
25827	26%
30123	26%
31328	26%
39737	26%
28808	26%
36289	26%
20505	26%
19024	26%
31436	26%
27227	26%
35085	26%
35085	26%
21117	26%
21117	26%
21776	26%
16578	26%
29135	26%
32106	26%
22807	26%
30191	26%
22806	26%
22806	26%
27353	26%
27894	26%
14673	26%
20862	26%
32668	26%
17030	26%
16045	26%
23232	26%
33266	26%
22323	25%
34946	25%
34950	25%

34998	25%
24118	25%
25403-03	25%
33151	25%
33152	25%
34911	25%
34912	25%
34913	25%
34914	25%
22500	25%
22501	25%
24789	25%
34672	25%
13806	25%
23858	25%
25927	25%
32574	25%
27988	25%
33456	25%
39131	25%
38914	25%
9661	25%
26302	25%
26302	25%
37537	25%
33483	25%
39126	25%
23411	25%
28312	25%
17194	25%
26014	25%
38925	25%
16617	25%
19753	25%
23691	25%
33793	25%
24639	25%
24640	25%
24641	25%
25340	25%
37011	25%
47121	25%
34252	25%

21182	25%
21172	25%
26083	25%
37570	25%
24321	25%
28508	25%
25627	24%
25627	24%
22095	24%
33741-03	24%
33741-03	24%
33741-03	24%
33741-03	24%
35347	24%
19738	24%
25466	24%
29442	24%
29443	24%
35358	24%
20444	24%
20503	24%
31392	24%
19426	24%
34844	24%
20504	24%
24718	24%
27259	24%
22144	24%
27893	24%
19709	24%
20193	24%
20195	24%
14944	24%
33058	24%
34883	24%
34903	24%
23084	23%
23708	23%
37982	23%
37983	23%
18147-D1	23%
18147-D2	23%
16622	23%

17239	23%
28085	23%
36008	23%
36025	23%
25407	23%
25889	23%
25889	23%
25889	23%
28788	23%
25823	23%
32611	23%
19757	23%
19757	23%
38975	23%
7793	23%
10796	23%
15173	23%
34542	23%
22808	23%
31920	23%
32633	23%
38130	23%
22611	23%
26187	23%
39123	23%
37152	23%
25396	23%
25708	23%
23234	23%
17153	22%
20211	22%
12479	22%
29185	22%
29186	22%
13620	22%
25760	22%
28633	22%
28634	22%
37300	22%
37318	22%
19752	22%
18947	22%
21943	22%



33225	22%
36584	22%
39096	22%
16975	22%
20878	22%
24723	22%
32481	22%
26900	22%
26901-D1	22%
26901-D2	22%
26901-D3	22%
24274	22%
26079	22%
28043	22%
29664	22%
25670	22%
25324	22%
25325	22%
33760	22%
20376	22%
31198	22%
20506	22%
16169	22%
24811	22%
32268	22%
28044	22%
17095	22%
22710	22%
31223	22%
37518	22%
28084	22%
28453	22%
35424	21%
35425	21%
42890	21%
25260	21%
9662	21%
22499	21%
28640	21%
9693	21%
11819	21%
19737	21%
34010	21%

19422	21%
23053	21%
32680	21%
34947	21%
34948	21%
23249	21%
23250	21%
19038	21%
20140	21%
20141	21%
21843	21%
23096	21%
20494	21%
20633	21%
21913	21%
25804	21%
20038	21%
26911	21%
26373	21%
27023	21%
24773	21%
25393	21%
25394	21%
25395	21%
35890	20%
20191	20%
20192	20%
21535	20%
36619	20%
20452	20%
37252	20%
30453	20%
38193	20%
28567	20%
31551	20%
35235	20%
34456	20%
37161	20%
26224	20%
26423	20%
28501	20%
32764	20%
34004	20%

34006	20%
20922	20%
24674	20%
31224	20%
31225	20%
17904	20%
37052	20%
19528	20%
24803	20%
24812	20%
35903	20%
36086	20%
20377	20%
26313	20%
26909	20%
24590-D1	20%
27824	20%
27825	20%
25608	20%
26792	20%
27355	20%
35665	20%
35773	20%
36986	20%
28679	20%
37323	20%
39710	20%
37345	19%
37346	19%
28495	19%
37499	19%
37391	19%
22196	19%
42588	19%
42588	19%
42588	19%
24954	19%
24954	19%
24954	19%
24954	19%
32992	19%
33204	19%
25010	19%

25010	19%
26133	19%
34647	19%
47487	19%
22626	19%
22626	19%
22626	19%
19943	19%
21868	19%
20020	19%
18297	19%
18297	19%
34942	19%
34984	19%
35416	19%
37194	19%
8256	19%
17704	19%
27905	19%
30301	19%
15952	19%
18183	19%
18278	19%
23303	19%
25514	19%
21884	19%
30809	19%
19359	19%
37203	19%
37472	19%
37473	19%
36884	19%
27169	19%
30856	18%
37480	18%
36970	18%
36971	18%
35080	18%
35529	18%
20844	18%
24701	18%
15780	18%
27399	18%

35128	18%
39879	18%
21162	18%
21163	18%
23097	18%
31020	18%
31021	18%
24107	18%
17752	18%
17932	18%
29026	18%
21006	18%
34882	18%
22624	18%
35004	18%
33387	18%
11907	18%
16614	18%
20842	18%
37195	18%
16496	18%
17702	18%
19831	18%
28657	18%
28658	18%
26708	18%
28632	18%
20194	18%
23029	18%
23452	18%
24590-D2	18%
27325	18%
26132	18%
33061	17%
33062	17%
22324	17%
26974	17%
29676	17%
36204	17%
18669	17%
18670	17%
19935	17%
27456	17%

36009	17%
36882	17%
12968	17%
14442	17%
20491	17%
36460	17%
35954	17%
31454	17%
31458	17%
37624	17%
37625	17%
19762	17%
20143	17%
19151	17%
35689	17%
37415	17%
24631	17%
28504	17%
33410	17%
18129	17%
27616	17%
27617	17%
24854	17%
10821	17%
32740	17%
25078	17%
25292	17%
26151	17%
34607	17%
25166	17%
29025	17%
36981	17%
36300	17%
21276	17%
34022	17%
28185	17%
24147	17%
24148	17%
24149	17%
24150	17%
34116	17%
34117	17%
38507	17%

38508	17%
31199	17%
32667	17%
23194	17%
23592	17%
33734	17%
29766	16%
30759	16%
37980	16%
35806	16%
35807	16%
15793	16%
34919	16%
21801	16%
47497	16%
24442	16%
23195	16%
37087	16%
23959	16%
25971	16%
25971	16%
9903	16%
26425	16%
26426	16%
36453	16%
39195	16%
28350	16%
30371	16%
30371	16%
30728	16%
38396	16%
13260	16%
27588	16%
36505	16%
25326	16%
23083	16%
23085	16%
26751	16%
26752	16%
24592	16%
24517	16%
25397	16%
25604	16%

24591-D1	16%
24591-D2	16%
27948	16%
35943	16%
26709	15%
31204	15%
31204	15%
19930	15%
22625-D1	15%
22625-D2	15%
22625-D3	15%
22625-D4	15%
17017	15%
19942	15%
22212	15%
25789	15%
27062	15%
24876	15%
33328	15%
33329	15%
37592	15%
37593	15%
13296	15%
26834	15%
20499	15%
30623	15%
28686	15%
35467	15%
16744	15%
21426	15%
13034	15%
27971	15%
16750	15%
17516	15%
34221	15%
36203	15%
36203	15%
49645	15%
19758	15%
19759	15%
19760	15%
24106	15%
13046	15%



39909	15%
39916	15%
39917	15%
26040	15%
26041	15%
14931	15%
14931	15%
37574	15%
26977	15%
28826	15%
16497	15%
27885	15%
10754	15%
20492	15%
24337	15%
35420	15%
20571	15%
20980	15%
25403-05	15%
25403-05	15%
14529	15%
24702	15%
25079	15%
26104	15%
13771	15%
23609	15%
22665	15%
36479	15%
37002	15%
20979	15%
36036	15%
22623	15%
24145	15%
24146	15%
34752	15%
29272	15%
37365	15%
27278	14%
27279	14%
27280	14%
27644	14%
15688	14%
24734-D1	14%

24734-D2	14%
23801	14%
47496	14%
9737	14%
9737	14%
32365	14%
24866	14%
30464	14%
34530	14%
19575	14%
30196	14%
30649	14%
16892	14%
17560	14%
18322	14%
25406	14%
31972	14%
39480	14%
27203	14%
38646	14%
39753	14%
32960	14%
35389	14%
22628	14%
27176	14%
31102	14%
35043	14%
17901-D1	14%
17901-D2	14%
29633	14%
26037	14%
26037	14%
33880	14%
29811	14%
13812	14%
28124	14%
33519	14%
34777	14%
21081	14%
27678	14%
29087	14%
17939	14%
22579	14%

21309	14%
33060	14%
20843	14%
27639	14%
24589	14%
42259	14%
22627	14%
22627	14%
21379	14%
39853	14%
16316	13%
28394	13%
27269	13%
8634	13%
18270	13%
30882	13%
36416-01	13%
36416-01	13%
36755	13%
26858	13%
21651	13%
31622	13%
31830	13%
32015	13%
7769	13%
12461	13%
23632	13%
38923	13%
22615-D1	13%
22615-D2	13%
26291	13%
39585	13%
41377	13%
41377	13%
41377	13%
41377	13%
41377	13%
27175	13%
18228	13%
26200	13%
35477	13%
19989	13%
20312	13%

26870	13%
30135	13%
23270	13%
19739	13%
19740	13%
19741	13%
23451	13%
25498	13%
25499	13%
27354	13%
27359	13%
33895	13%
24532	13%
24533	13%
29631	13%
23362	13%
23362	13%
28376	13%
28379	13%
37497	13%
34459	13%
34459	13%
25814	13%
26033	13%
28697-D1	13%
28697-D2	13%
32561	13%
37103	13%
30197	13%
25496-D1	13%
25496-D2	13%
11574	13%
23216	13%
34778	13%
37297	13%
28624	12%
35001	12%
18671	12%
22823	12%
28867	12%
26034	12%
26034	12%
30410	12%

33172	12%
28754	12%
28755	12%
36010	12%
20493	12%
23869	12%
24025	12%
25500	12%
28289	12%
7747	12%
21289	12%
36555	12%
7732	12%
25269	12%
25441	12%
16949	12%
16950	12%
20180	12%
20181	12%
16355	12%
16355	12%
16355	12%
16355	12%
24663	12%
39840	12%
35318	12%
11919	12%
19248	12%
11456-D1	12%
11456-D2	12%
41423	12%
28377	12%
28378	12%
28684	12%
18932-D1	12%
18932-D2	12%
38186	12%
14187	12%
14187	12%
16032	12%
23612	12%
11964	12%
22581	12%

34792	12%
23734	12%
26147	12%
20446	12%
26824	12%
26824	12%
12922	12%
9416	12%
14774	12%
18209	12%
29372	12%
38382	12%
38387	12%
25621	12%
38612	12%
19927	11%
19927	11%
16864-D2	11%
35315	11%
20496	11%
23087	11%
25635	11%
25636	11%
23770	11%
21449	11%
11493	11%
36965	11%
15685	11%
16334	11%
16335	11%
26007	11%
30254	11%
30698	11%
36724	11%
26618	11%
28541	11%
18048	11%
24671	11%
9596	11%
20563	11%
21519	11%
22580	11%
30632	11%

30762	11%
33336	11%
38887	11%
38903	11%
39076	11%
23450	11%
27830	11%
27831	11%
28446	11%
36743	11%
26507	11%
26507	11%
34956	11%
25953	11%
35197	11%
35198	11%
20816	11%
39097	11%
19443	11%
32016	11%
33350	11%
21159	11%
24927	11%
27837	11%
17917	11%
28625	11%
24516	11%
27609	11%
32224	11%
21131	11%
22054	11%
19561	11%
23073	11%
20845	11%
23617	11%
23807-D1	11%
23807-D2	11%
23808-D1	11%
23808-D2	11%
25290	11%
26473	10%
24662	10%
33685	10%

33686	10%
34343	10%
34343	10%
16844	10%
17902	10%
29632	10%
11467-D2	10%
11467-D2	10%
25398	10%
25942	10%
17839	10%
20441	10%
20441	10%
23421	10%
34097	10%
37020	10%
22407	10%
33885	10%
16573	10%
16878	10%
21201	10%
21202	10%
27311	10%
27311	10%
13035	10%
35953	10%
26385	10%
21778	10%
31218	10%
31219	10%
31593	10%
24661	10%
25932	10%
25932	10%
21531	10%
24766	10%
20445	10%
40217	10%
11467-D1	10%
27892	10%
34347	10%
25236	10%
26027	10%



31731	10%
37019-D1	10%
37019-D2	10%
15403	10%
32766	10%
38930	10%
22314	10%
29817	10%
29817	10%
31002	10%
31003	10%

## Exhibit E

### *Irrigation Season Rainfall Evapotranspiration Factor*

<b>Year</b>	<b>ISRE Factor</b>
2002	1.00
2003	1.01
2004	1.02
2005	1.01
2006	1.01
2007	1.02
2008	1.01
2009	1.00
2010	1.00
2011	1.00
2012	1.03
2013	1.06
2014	1.05
2015	1.05
2016	1.05
2017	1.05
2018	1.08
2019	1.04
2020	0.99
2021	0.97