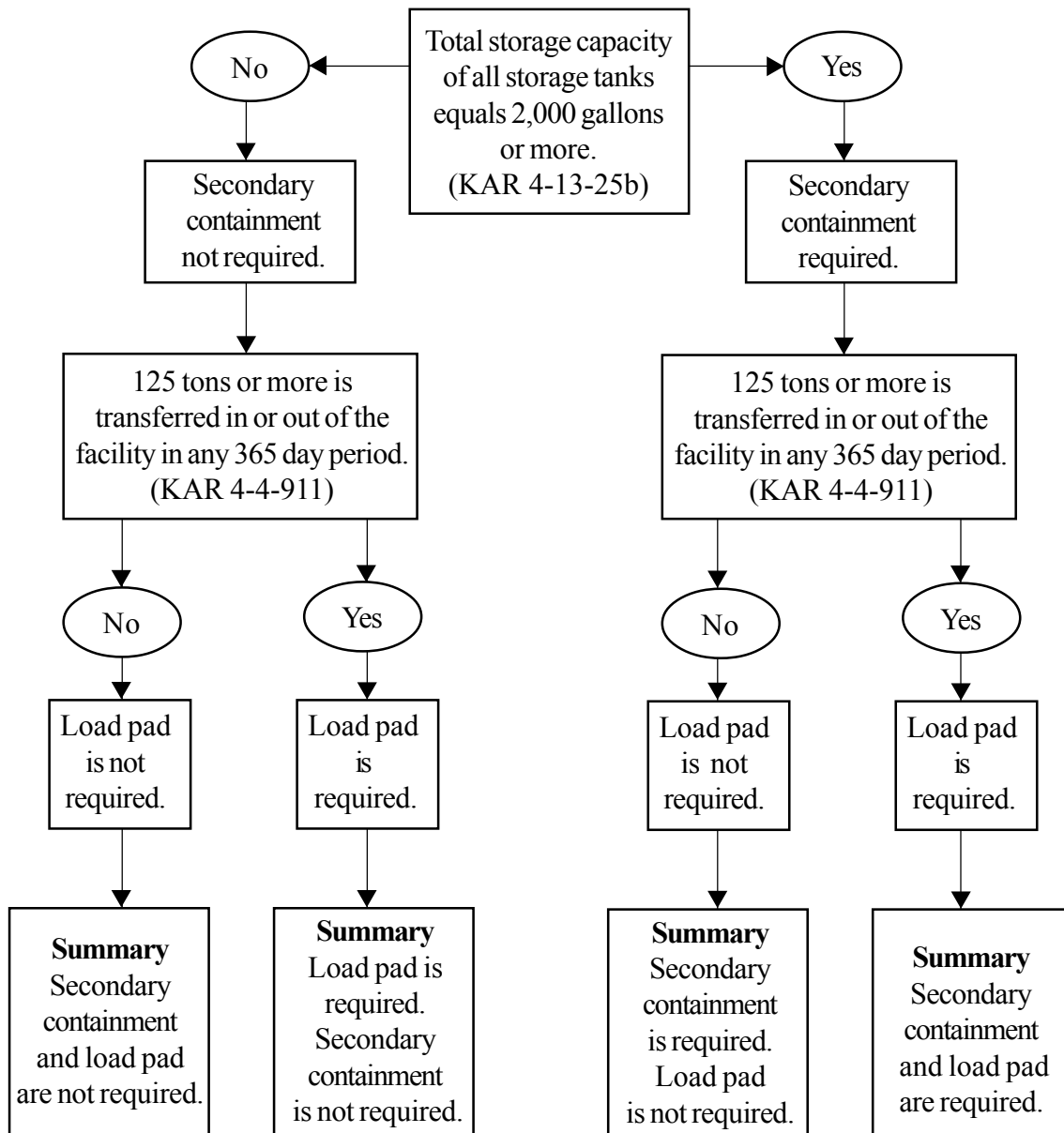




Liquid Fertilizer Bulk Storage Secondary Containment and Load Pad Requirements

This flow chart is a quick, easy way for you to determine if you meet the criteria that would require you to have secondary containment and a load pad for liquid fertilizer bulk storage. If you meet the criteria, you may access the application and any schedules you need on our website at www.accesskansas.org/kda/Pest&Fert/contain.htm, or you can call (785) 296-3786.



FLOW CHART

Resources on the Web

Kansas Department of Agriculture
www.accesskansas.org/kda

Kansas Department of Agriculture
Statutes and Regulations
www.ks-agr.org/kda-laws/welcome.asp

Kansas Department of Agriculture
Applications and Forms
www.accesskansas.org/kda/Records/records-forms.htm

Kansas Department of Agriculture
Pesticide and Fertilizer Program
www.accesskansas.org/kda/Pest&Fert/Pest-mainpage.htm

KSU Extension
Pesticides and Integrated Pest Management
This website includes an order form for commercial pesticide
applicator training manuals, some of which are online.
www.oznet.ksu.edu/pesticides-IPM/

Environmental Protection Agency
Compliance and Enforcement
www.epa.gov/compliance

Environmental Protection Agency
Pesticide Best Management Practices
www.epa.gov/agriculture/tpes.html

Environmental Protection Agency
Compliance Assistance
www.epa.gov/Region7/pesticides/general_info.htm

Spill Reporting

Kansas Department of Emergency Management
www.accesskansas.org/kdem/

Kansas Department of Health and Environment
www.kdhe.state.ks.us/spill/index.html