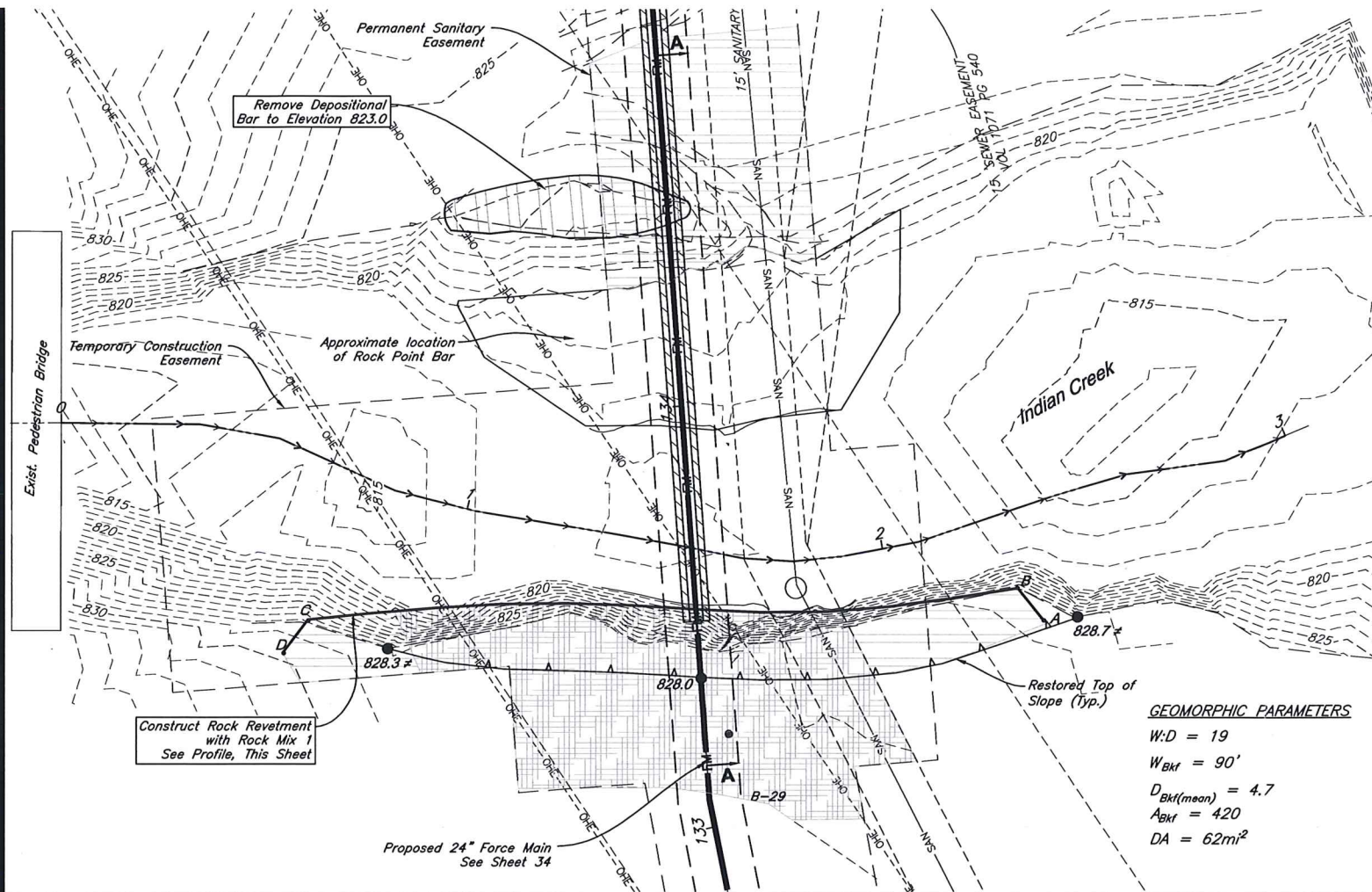
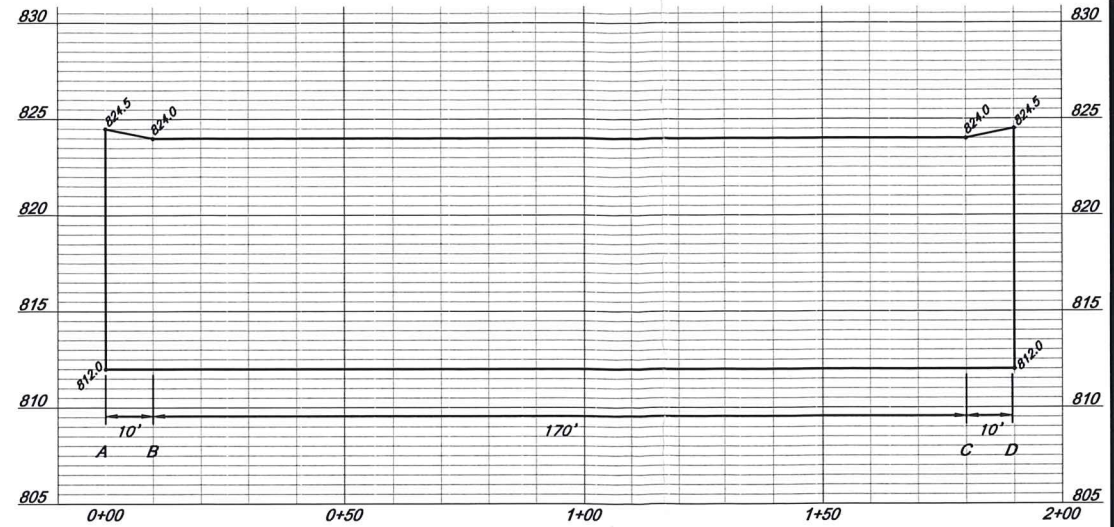


C:\15361\Civil_3D\Production Drawings\Force Main Plans\1536102803.dwg Layout: Stream Crossing 2 -- Tuesday March 05, 2024, 12:34pm -- Copyright 2024, George Butler Associates, Inc.



GEOMORPHIC PARAMETERS

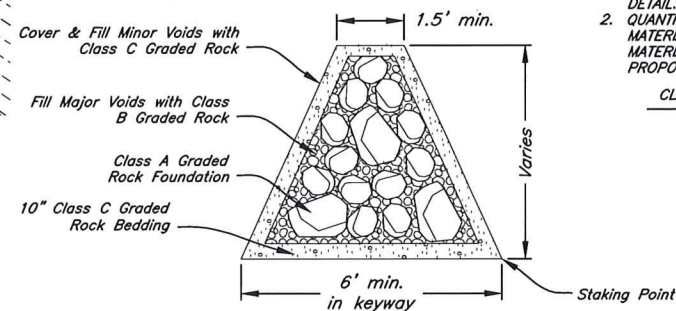
W:D = 19
W_{Bkf} = 90'
D_{Bkf(mean)} = 4.7
A_{Bkf} = 420
DA = 62mi²



ROCK REVETMENT

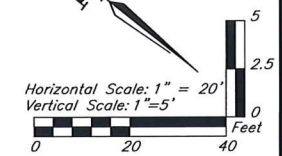
- NOTES:
1. REFERENCE SHEET 151 FOR CAGED REINFORCED ENCASUREMENT. DETAIL ALL LONGITUDINAL REINFORCING SHALL BE EVENLY SPACED.
2. QUANTITIES FOR REVETMENT ARE COMPOSITE VOLUMES. INSTALLED MATERIALS SHALL BE PROVIDED BY MIXING GRADING ROCK MATERIALS SPECIFIED IN JCW TECH. SPEC. 2 IN FOLLOWING PROPORTION:

CLASS ROCK PER SPEC	MIX 1	MIX 2
A	85%	65%
B	5%	15%
C	10%	20%



TYPICAL REVETMENT FOUNDATION SECTION

Not to Scale

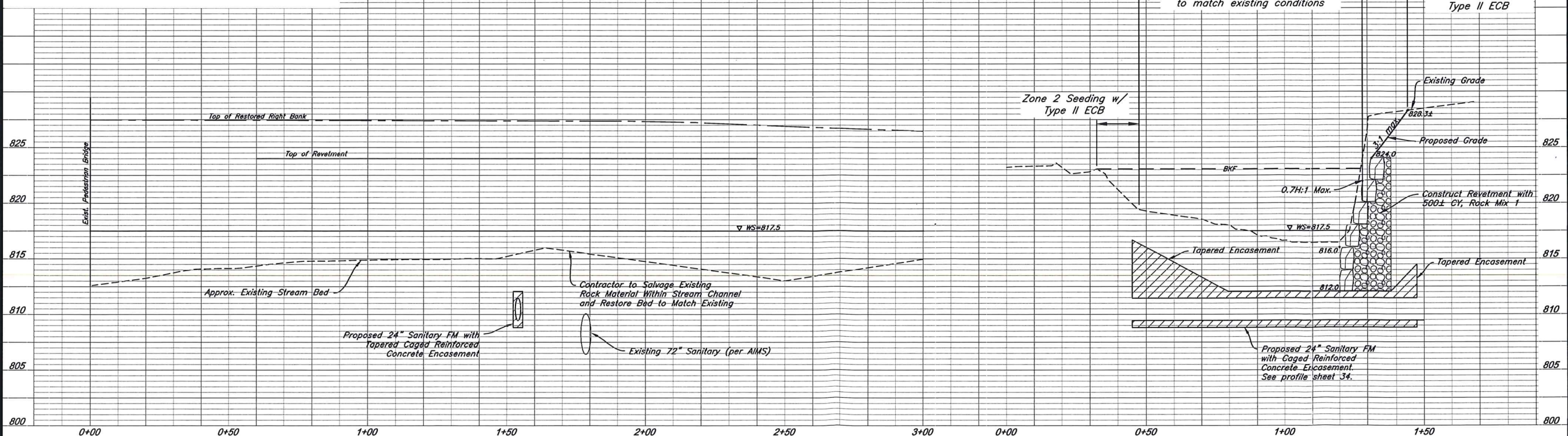


LEGEND

- ZONE 2 NATIVE SEEDING WITH TYPE II ECB (472 SY)
- ZONE 2 NATIVE SEEDING & PLANTINGS WITH TYPE II ECB (415 SY)

INDIAN CREEK PROFILE

SECTION A-A



WATER RESOURCES
RECEIVED
APR 22 2024

KS DEPT OF AGRICULTURE

REV	DATE	DESCRIPTION

PROJECT NUMBER
15361

DATE
03.05.2024
Final Plans

DESIGNED: BEF
DRAWN: ACL
REVIEWED: MLG

SHEET TITLE
Stream Crossing 2

SHEET NUMBER

156