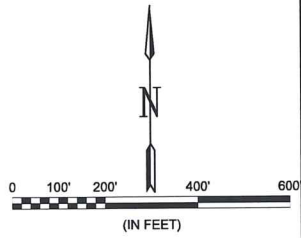
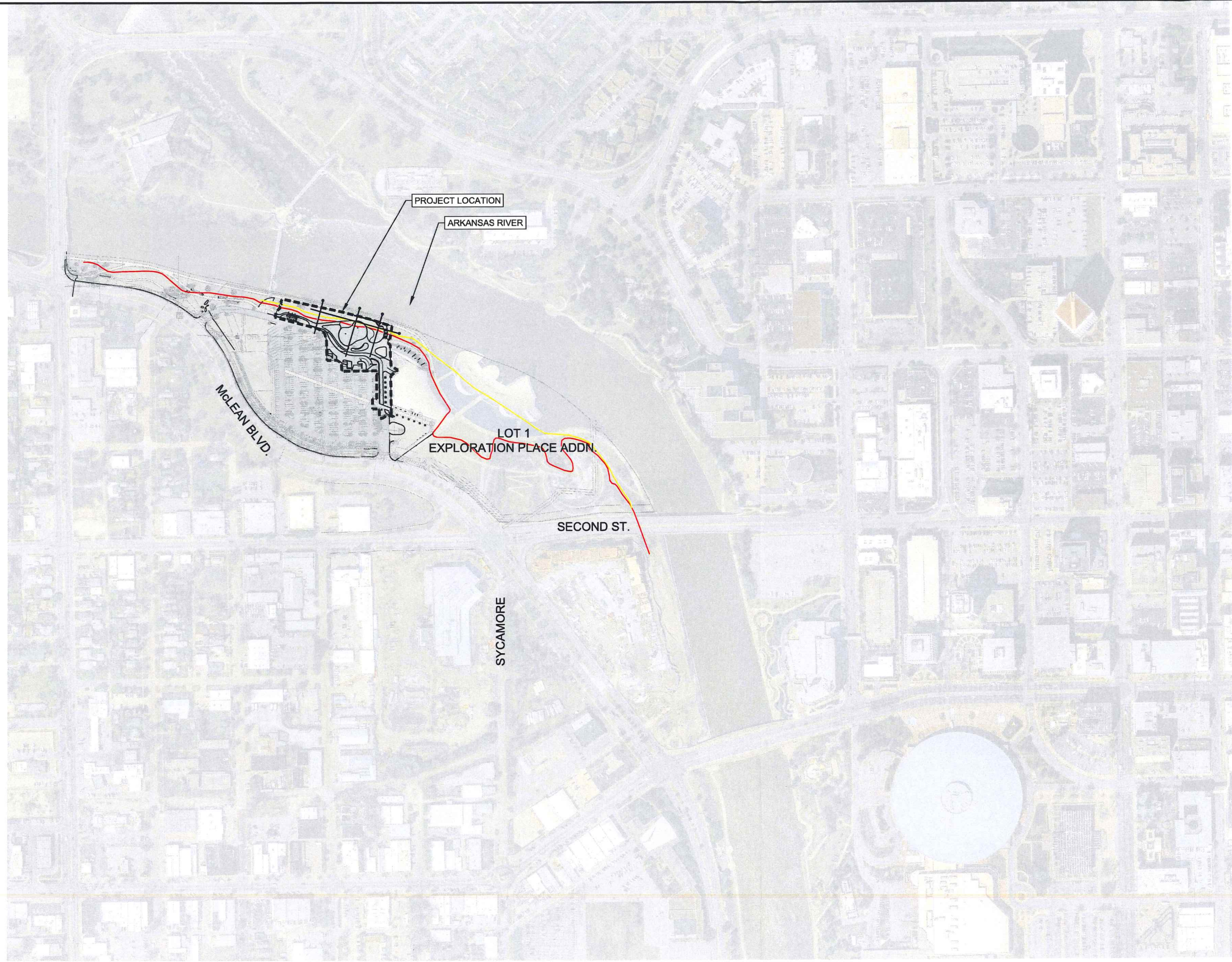


File: L:\2022\22F00300 - EP Site Improvements\Construction\Approvals-Permits\DWREXP-C201-GR_for_permit.dwg Last Save: 4/19/2024 8:46 AM Last saved by: BDTThomas
 Last plotted by: Thomas, Brent D. Plot Style: AEC_B&W.ctb Plot Scale: 1:1 Plot Date: 4/19/2024 1:54 PM Plotter used: DWG To PDF.pc3



© 2023 GARVER, LLC
 THIS DOCUMENT, ALONG WITH THE IDEAS AND DESIGNS CONVEYED HEREIN, SHALL BE CONSIDERED INSTRUMENTS OF PROFESSIONAL SERVICE AND ARE PROPERTY OF GARVER, LLC. ANY USE, REPRODUCTION, OR DISTRIBUTION OF THIS DOCUMENT, ALONG WITH THE IDEAS AND DESIGN CONTAINED HEREIN, IS PROHIBITED UNLESS AUTHORIZED IN WRITING BY GARVER, LLC OR EXPLICITLY ALLOWED IN THE GOVERNING PROFESSIONAL SERVICES AGREEMENT FOR THIS WORK.

1995 Midfield Road
 Wichita, KS 67209
 (316) 264-8008

Hoerr Schaudt
 1101 W. Lake St. 4th Floor
 Chicago, Illinois 60607
 Tel: 312.482.8901
 Fax: 312.482.7191

REV.	DATE	DESCRIPTION	BY

EXPLORATION PLACE WICHITA, KANSAS
 PHASE 1 STORMWATER IMPROVEMENTS

PROJECT LOCATION

JOB NO.: 22F00300
 DATE: NOV 2023
 DESIGNED BY: BRT
 DRAWN BY: BIG

BAR IS ONE INCH ON ORIGINAL DRAWING
 IF NOT ONE INCH ON THIS SHEET, ADJUST SCALES ACCORDINGLY.

DRAWING NUMBER
C-200
 SHEET NUMBER #

WATER RESOURCES RECEIVED
APR 22 2024
KS DEPT OF AGRICULTURE

1 PROJECT LOCATION
 SCALE: 1" = 200'

NOTE:
SITE GRADING WILL NOT CAUSE ADDITIONAL ADVERSE DRAINAGE IMPACTS ONTO NEIGHBORING PROPERTIES.

WATER RESOURCES RECEIVED
APR 22 2024
KS DEPT OF AGRICULTURE

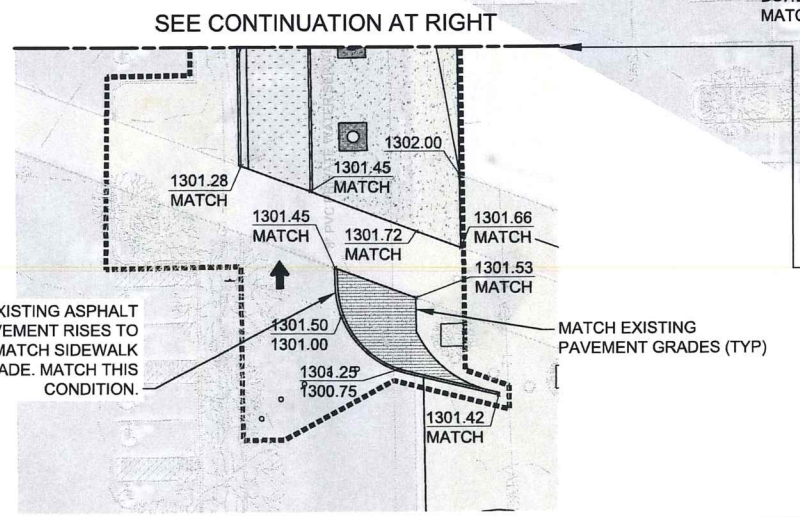
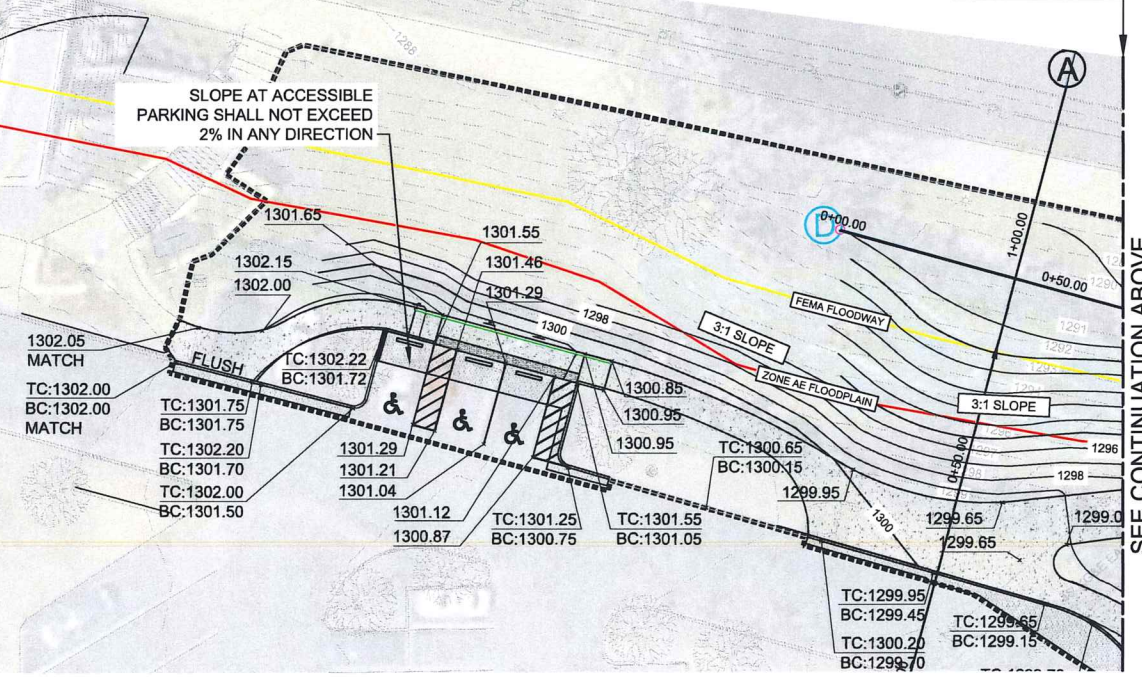
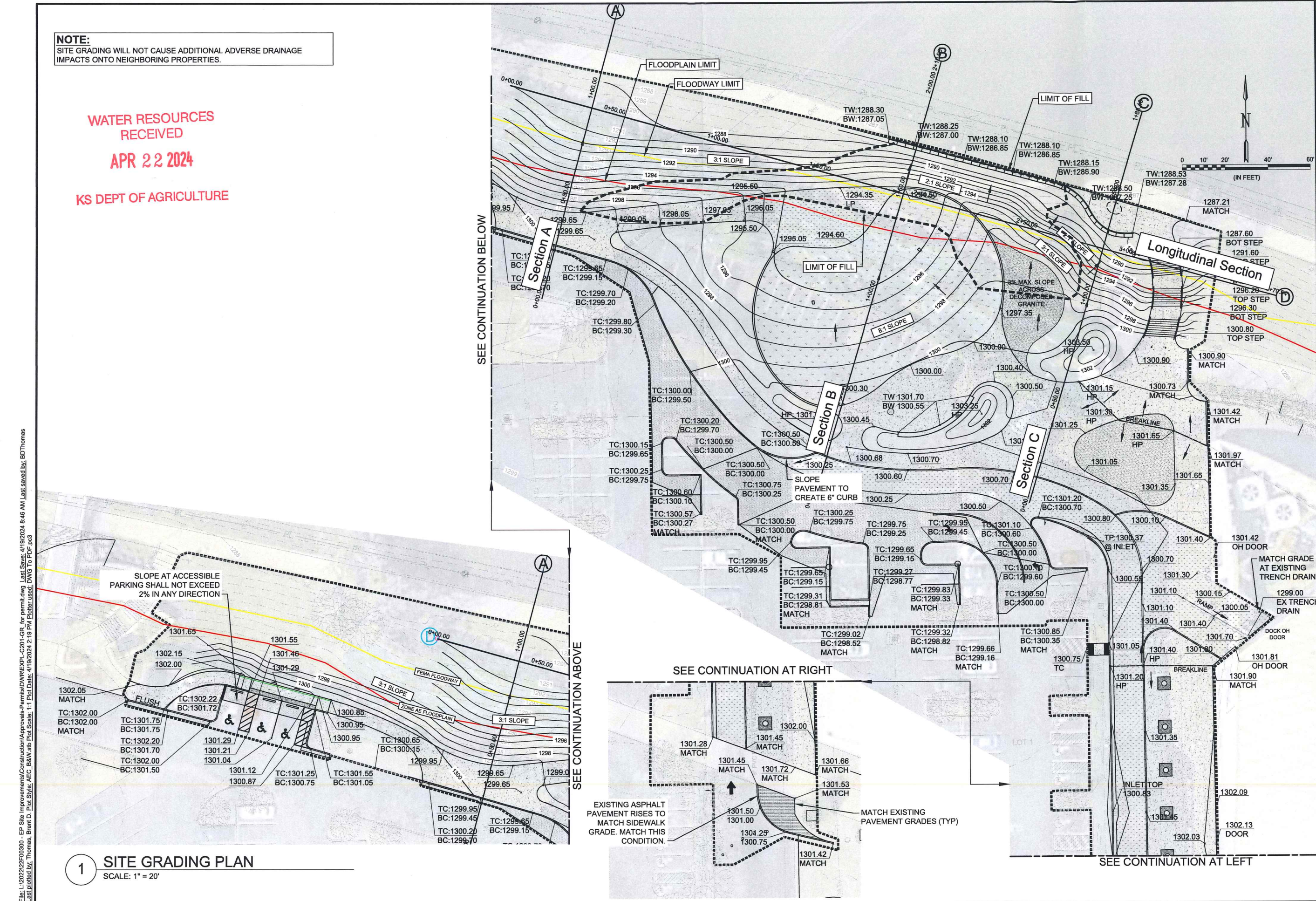


© 2023 GARVER, LLC
THIS DOCUMENT, ALONG WITH THE IDEAS AND DESIGNS CONVEYED HEREIN, SHALL BE CONSIDERED INSTRUMENTS OF PROFESSIONAL SERVICE AND ARE PROPERTY OF GARVER, LLC. ANY USE, REPRODUCTION, OR DISTRIBUTION OF THIS DOCUMENT, ALONG WITH THE IDEAS AND DESIGN CONTAINED HEREIN, IS PROHIBITED UNLESS AUTHORIZED IN WRITING BY GARVER, LLC OR EXPLICITLY ALLOWED IN THE GOVERNING PROFESSIONAL SERVICES AGREEMENT FOR THIS WORK.

1995 Midfield Road
Wichita, KS 67209
(316) 264-8008

Hoerr Schaudt
1101 W. Lake St. 4th Floor
Chicago, Illinois 60607
Tel: 312.482.6001
Fax: 312.482.7101

File: L:\2022\22F00300 - EP Site Improvements\Construction\Permits\DWREXP\C-201-GR for permit.dwg Last Save: 4/19/2024 8:46 AM Last saved by: BThomas
Last plotted by: Thomas, Brent D. Plot Style: AEC_B&W.ctb Plot Scale: 1:1 Plot Date: 4/19/2024 2:19 PM Printer used: DWG To PDF.pc3

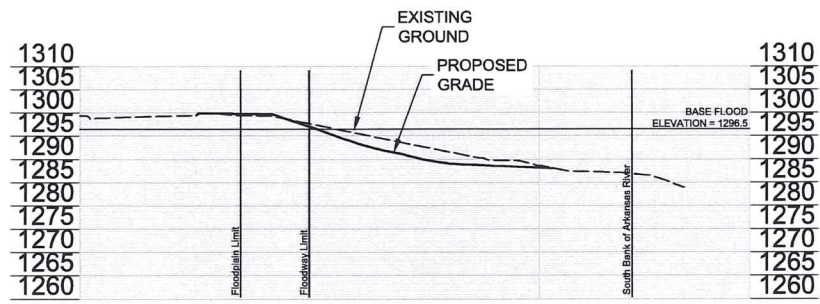


1 SITE GRADING PLAN
SCALE: 1" = 20'

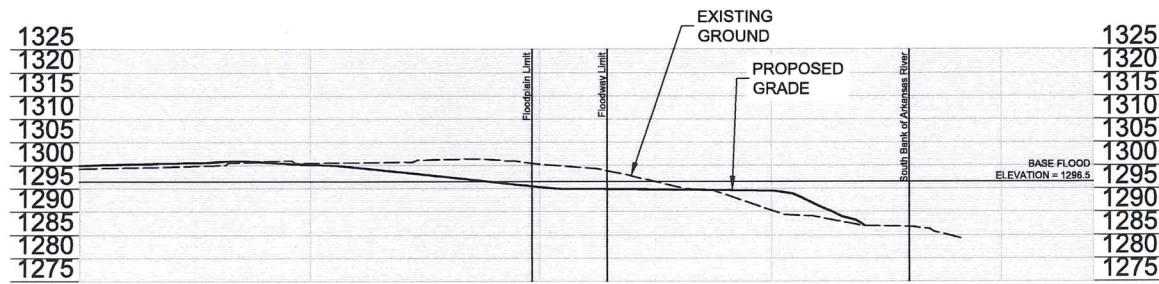
REV.	DATE	DESCRIPTION

EXPLORATION PLACE WICHITA, KANSAS
PHASE 1 STORMWATER IMPROVEMENTS

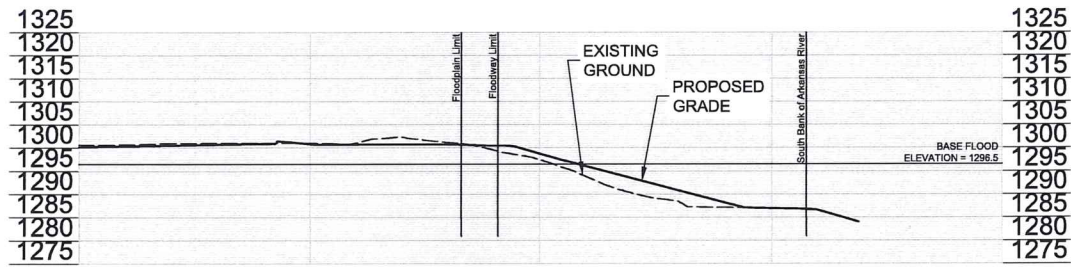
GRADING PLAN
JOB NO.: 22F00300
DATE: NOV 2023
DESIGNED BY: BRT
DRAWN BY: BIG
BAR IS ONE INCH ON ORIGINAL DRAWING
IF NOT ONE INCH ON THIS SHEET, ADJUST SCALES ACCORDINGLY.
DRAWING NUMBER
C-201
SHEET NUMBER #



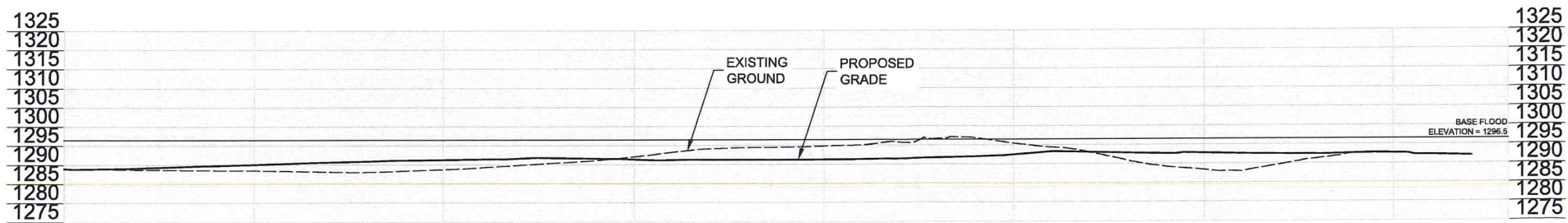
CROSS SECTION A



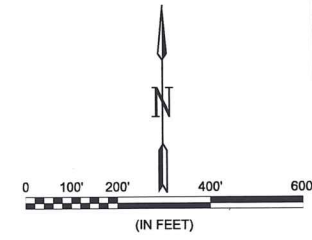
CROSS SECTION B



CROSS SECTION C



LONGITUDINAL SECTION D



© 2023 GARVER, LLC
 THIS DOCUMENT, ALONG WITH THE IDEAS AND DESIGNS CONVEYED HEREIN, SHALL BE CONSIDERED INSTRUMENTS OF PROFESSIONAL SERVICE AND ARE PROPERTY OF GARVER, LLC. ANY USE, REPRODUCTION OR DISTRIBUTION OF THIS DOCUMENT, ALONG WITH THE IDEAS AND DESIGN CONTAINED HEREIN, IS PROHIBITED UNLESS AUTHORIZED IN WRITING BY GARVER, LLC OR EXPLICITLY ALLOWED IN THE GOVERNING PROFESSIONAL SERVICES AGREEMENT FOR THIS WORK.

1995 Midfield Road
 Wichita, KS 67209
 (316) 264-8008

Hoerr Schaudt
 1101 W. Lake St. 4th Floor
 Chicago, Illinois 60607
 Tel: 312.482.8501
 Fax: 312.482.7101

REV.	DATE	DESCRIPTION	BY

EXPLORATION PLACE WICHITA, KANSAS
 PHASE 1 STORMWATER IMPROVEMENTS

CROSS SECTIONS

JOB NO.: 22F00300
 DATE: NOV 2023
 DESIGNED BY: BRT
 DRAWN BY: BIG

BAR IS ONE INCH ON ORIGINAL DRAWING
 IF NOT ONE INCH ON THIS SHEET, ADJUST SCALES ACCORDINGLY.

DRAWING NUMBER
C-202

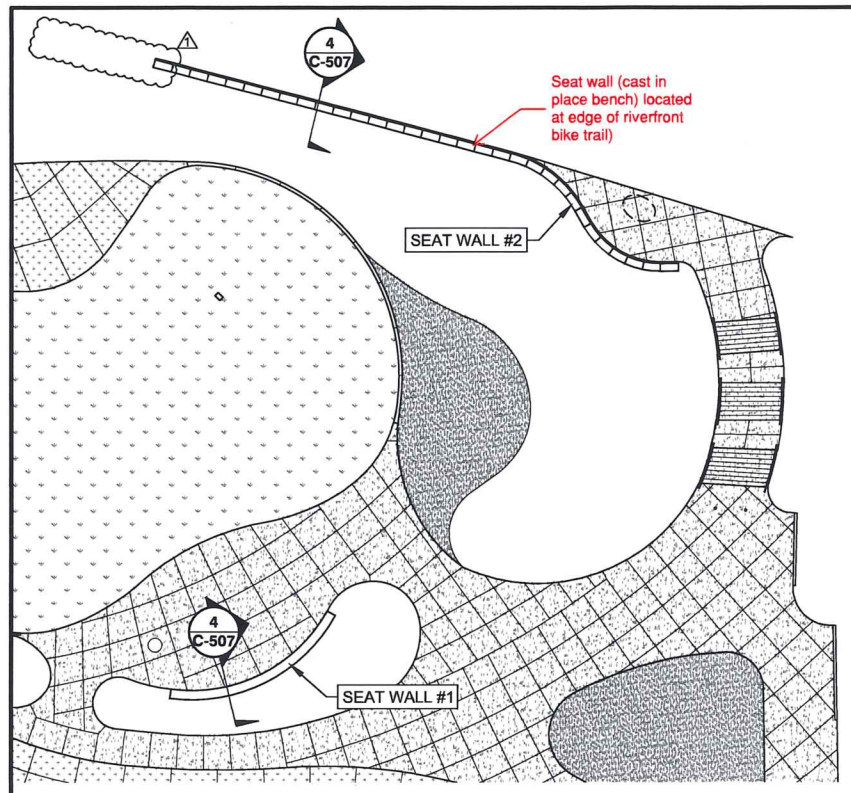
SHEET NUMBER #

WATER RESOURCES RECEIVED

APR 22 2024

KS DEPT OF AGRICULTURE

ISSUED FOR PERMIT - 10/04/2023



1 SEAT WALL PLAN
SCALE: 1" = 20"

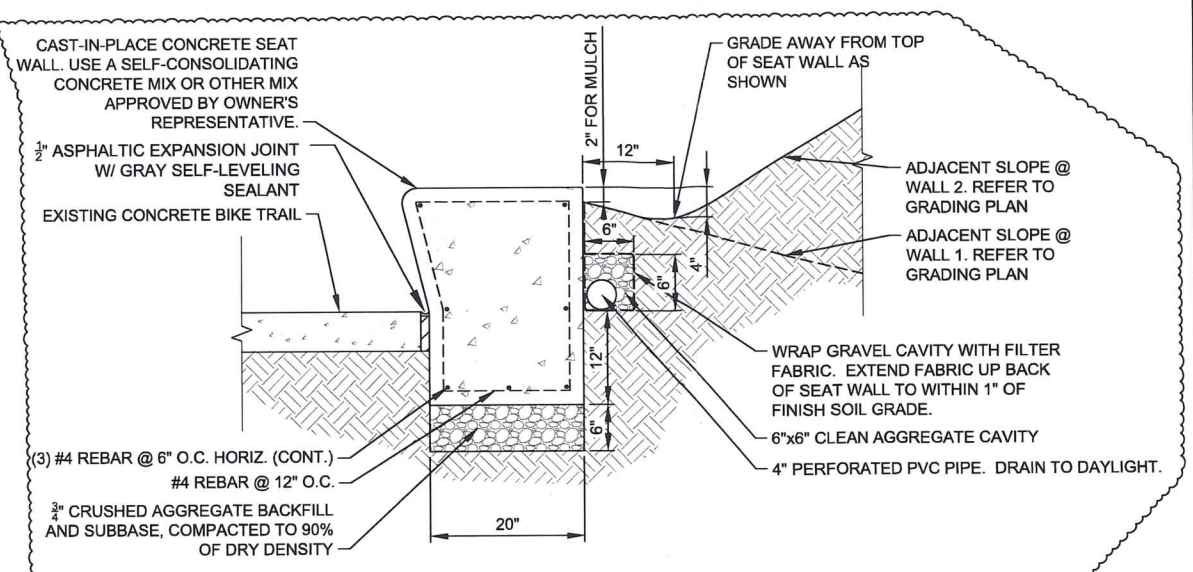
SEAT WALL #1 SHALL BE CUSTOM PRECAST SEAT WALL BASED ON URBASTYLE CENTENAIRE DIMENSIONS FROM WAUSAU TILE (800-388-8728) OR APPROVED EQUAL.
SEE DETAIL 6/ THIS SHEET FOR LAYOUT.
SEE DETAIL 3/ THIS SHEET FOR TYPICAL PROFILE.
SEE DETAIL 5/ THIS SHEET FOR TYPICAL WALL TERMINATION.

FINISH: ACID WASH
COLOR: A31Y FOG

LOCAL WAUSAU CONTACT:
BRET STEGEMAN (KS/MO/NE REP)
DIRECT: 636-385-0077
OFFICE: 913-489-7161
BRET@WTREP.COM

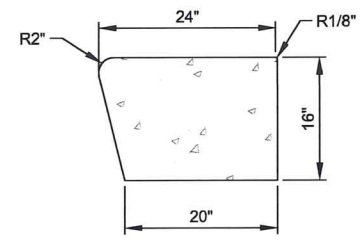
SEAT WALL #2 SHALL BE CAST-IN-PLACE CONCRETE SEAT WALL OF THE SAME PROFILE AS THE PROPOSED PRECAST CONCRETE SEAT WALL (WALL #1). CONTRACTOR SHALL USE A SELF-CONSOLIDATING CONCRETE MIX OR OTHER MIX APPROVED BY OWNER'S REPRESENTATIVE.

SEE DETAIL 7/ THIS SHEET FOR LAYOUT.
SEE DETAIL 3/ THIS SHEET FOR TYPICAL PROFILE.
SEE DETAIL 5/ THIS SHEET FOR TYPICAL WALL TERMINATION.



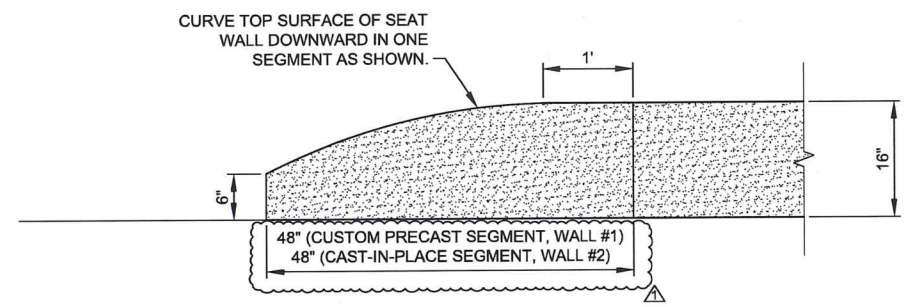
4 SEAT WALL #2 SECTION @ RIVERFRONT TRAIL
SCALE: 1" = 1'-0"

2 SEAT WALL SPECIFICATION
SCALE: NONE

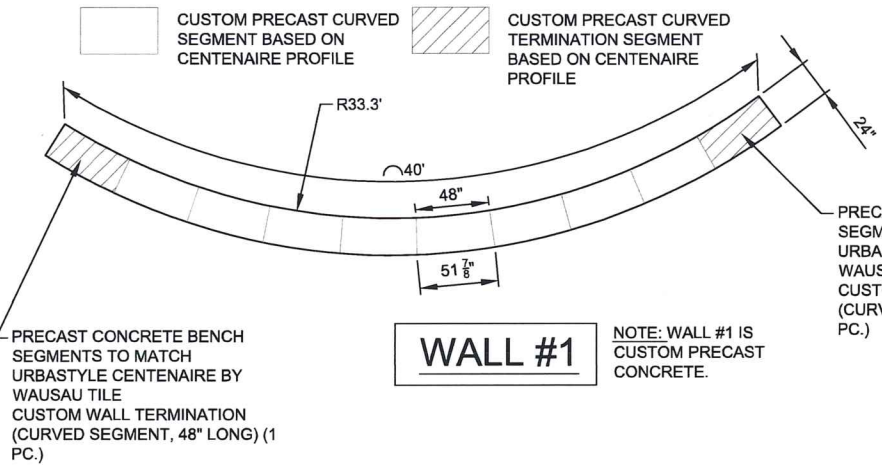


BASIS OF DESIGN:
DIMENSIONS PER
URBASTYLE CENTENAIRE
CUT SHEETS FROM
WAUSAU TILE.

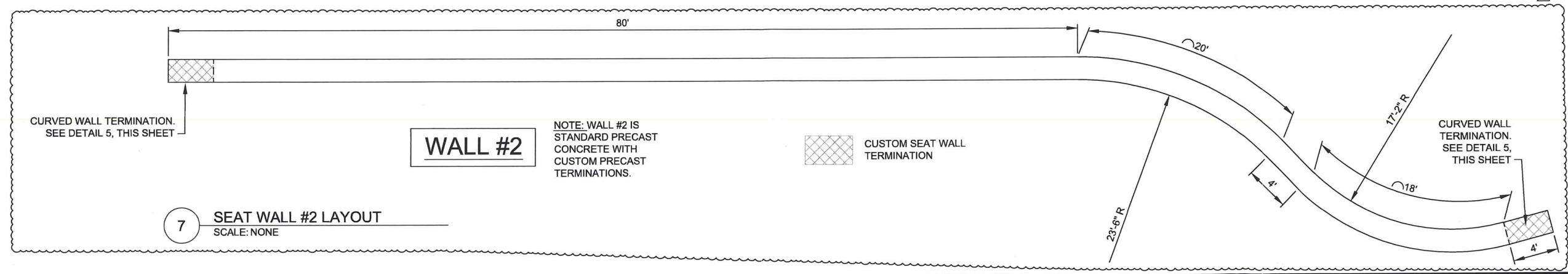
3 SEAT WALL PROFILE
SCALE: 1" = 1'-0"



5 SEAT WALL TERMINATION
SCALE: 1" = 1'-0"



6 SEAT WALL #1 LAYOUT
SCALE: NONE



7 SEAT WALL #2 LAYOUT
SCALE: NONE

WATER RESOURCES
RECEIVED
APR 22 2024
KS DEPT OF AGRICULTURE

GARVER
© 2023 GARVER, LLC
THIS DOCUMENT, ALONG WITH THE IDEAS AND DESIGNS CONVEYED HEREIN, SHALL BE CONSIDERED INSTRUMENTS OF PROFESSIONAL SERVICE AND ARE PROPERTY OF GARVER, LLC. ANY USE, REPRODUCTION, OR DISTRIBUTION OF THIS DOCUMENT, ALONG WITH THE IDEAS AND DESIGN CONTAINED HEREIN, IS PROHIBITED UNLESS AUTHORIZED IN WRITING BY GARVER, LLC OR EXPLICITLY ALLOWED IN THE GOVERNING PROFESSIONAL SERVICES AGREEMENT FOR THIS WORK.
1995 Midfield Road
Wichita, KS 67209
(316) 264-8008

Hoerr Schaudt
1101 W. Lake St., 4th Floor
Chicago, Illinois 60607
Tel: 312.482.8501
Fax: 312.482.7191

REV.	DATE	DESCRIPTION	BY	BDT
1	2/15/24	VALUE ENGINEERING MODS.		

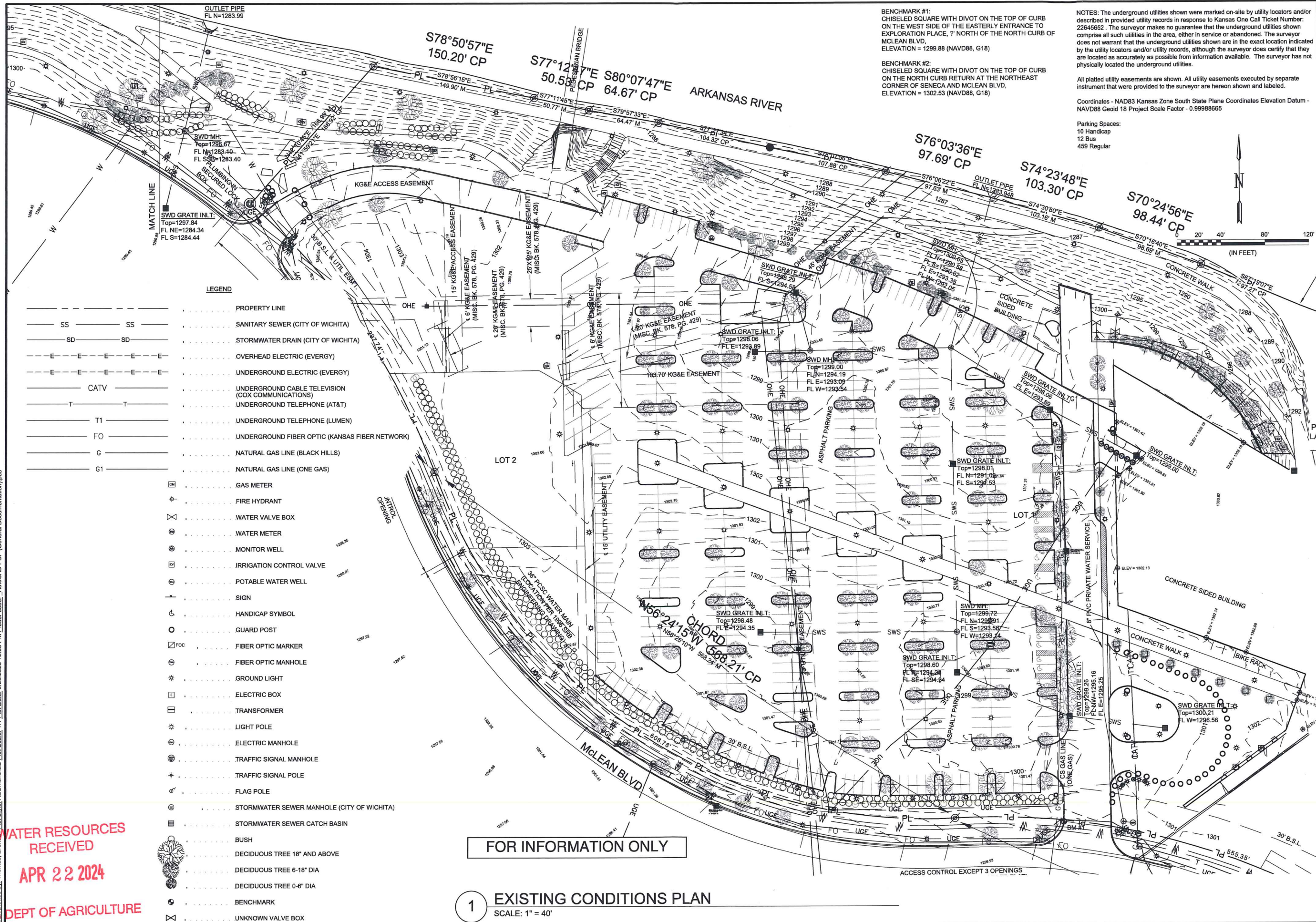
EXPLORATION PLACE WICHITA, KANSAS
PHASE 1 STORMWATER IMPROVEMENTS

SITE DETAILS 07

JOB NO.: 22F00300
DATE: NOV 2023
DESIGNED BY: BRT
DRAWN BY: BIG

BAR IS ONE INCH ON ORIGINAL DRAWING
IF NOT ONE INCH ON THIS SHEET, ADJUST SCALES ACCORDINGLY.
DRAWING NUMBER
C-507
SHEET NUMBER #

File: L:\02022222\F00300 - EP Site Improvements\Drawings\EXP-C501-CD.dwg Last Saved: 2/15/2024 2:34 PM Last saved by: BDTThomas
Last plotted by: Thomas, Brent D. Plot Date: 2/15/2024 4:19 PM Plotter used: DWG To PDF.pc3



BENCHMARK #1:
CHISELED SQUARE WITH DIVOT ON THE TOP OF CURB
ON THE WEST SIDE OF THE EASTERLY ENTRANCE TO
EXPLORATION PLACE, ? NORTH OF THE NORTH CURB OF
MCLEAN BLVD,
ELEVATION = 1299.88 (NAVD88, G18)

BENCHMARK #2:
CHISELED SQUARE WITH DIVOT ON THE TOP OF CURB
ON THE NORTH CURB RETURN AT THE NORTHEAST
CORNER OF SENECA AND MCLEAN BLVD,
ELEVATION = 1302.53 (NAVD88, G18)

NOTES: The underground utilities shown were marked on-site by utility locators and/or described in provided utility records in response to Kansas One Call Ticket Number: 22645652. The surveyor makes no guarantee that the underground utilities shown comprise all such utilities in the area, either in service or abandoned. The surveyor does not warrant that the underground utilities shown are in the exact location indicated by the utility locators and/or utility records, although the surveyor does certify that they are located as accurately as possible from information available. The surveyor has not physically located the underground utilities.

All platted utility easements are shown. All utility easements executed by separate instrument that were provided to the surveyor are hereon shown and labeled.

Coordinates - NAD83 Kansas Zone South State Plane Coordinates Elevation Datum - NAVD88 Geoid 18 Project Scale Factor - 0.99988665

Parking Spaces:
10 Handicap
12 Bus
459 Regular

GARVER
© 2023 GARVER, LLC
THIS DOCUMENT, ALONG WITH THE IDEAS AND DESIGNS CONVEYED HEREIN, SHALL BE CONSIDERED INSTRUMENTS OF PROFESSIONAL SERVICE AND ARE PROPERTY OF GARVER, LLC. ANY USE, REPRODUCTION, OR DISTRIBUTION OF THIS DOCUMENT, ALONG WITH THE IDEAS AND DESIGN CONTAINED HEREIN, IS PROHIBITED UNLESS AUTHORIZED IN WRITING BY GARVER, LLC OR EXPLICITLY ALLOWED IN THE GOVERNING PROFESSIONAL SERVICES AGREEMENT FOR THIS WORK.

1995 Midfield Road
Wichita, KS 67209
(316) 264-8008

Hoerr Schaudt
1101 W. Lake St, 4th Floor
Chicago, Illinois 60607
Tel: 312.482.8501
Fax: 312.482.7101

LEGEND

---	PROPERTY LINE
SS	SANITARY SEWER (CITY OF WICHITA)
SD	STORMWATER DRAIN (CITY OF WICHITA)
---	OVERHEAD ELECTRIC (EVERGY)
---	UNDERGROUND ELECTRIC (EVERGY)
CATV	UNDERGROUND CABLE TELEVISION (COX COMMUNICATIONS)
T	UNDERGROUND TELEPHONE (AT&T)
T1	UNDERGROUND TELEPHONE (LUMEN)
FO	UNDERGROUND FIBER OPTIC (KANSAS FIBER NETWORK)
G	NATURAL GAS LINE (BLACK HILLS)
G1	NATURAL GAS LINE (ONE GAS)
⊕	GAS METER
⊕	FIRE HYDRANT
⊕	WATER VALVE BOX
⊕	WATER METER
⊕	MONITOR WELL
⊕	IRRIGATION CONTROL VALVE
⊕	POTABLE WATER WELL
+	SIGN
⊕	HANDICAP SYMBOL
⊕	GUARD POST
⊕	FIBER OPTIC MARKER
⊕	FIBER OPTIC MANHOLE
*	GROUND LIGHT
⊕	ELECTRIC BOX
⊕	TRANSFORMER
*	LIGHT POLE
⊕	ELECTRIC MANHOLE
⊕	TRAFFIC SIGNAL MANHOLE
+	TRAFFIC SIGNAL POLE
⊕	FLAG POLE
⊕	STORMWATER SEWER MANHOLE (CITY OF WICHITA)
⊕	STORMWATER SEWER CATCH BASIN
⊕	BUSH
⊕	DECIDUOUS TREE 18" AND ABOVE
⊕	DECIDUOUS TREE 6-18" DIA
⊕	DECIDUOUS TREE 0-6" DIA
⊕	BENCHMARK
⊕	UNKNOWN VALVE BOX

FOR INFORMATION ONLY

1 EXISTING CONDITIONS PLAN
SCALE: 1" = 40'

File: L:\2022\22F00300 - EP Site Improvements\Drawings\EXPL-G101-EX.dwg Last Save: 9/24/2023 5:20 PM Last saved by: BDThomas
 Plotted by: Thomas, Brent Plot Style: AECmon.ctb Plot Scale: 1:1 Plot Date: 9/29/2023 12:56 PM Plotter used: AutoCAD PDF (General Documentation).pc3

WATER RESOURCES RECEIVED
APR 22 2024
DEPT OF AGRICULTURE

REV.	DATE	DESCRIPTION

EXPLORATION PLACE WICHITA, KANSAS

PHASE 1 SITE IMPROVEMENTS

EXISTING CONDITIONS

JOB NO.: 22F00300
DATE: SEPT 2023
DESIGNED BY: BDT
DRAWN BY: BIG

BAR IS ONE INCH ON ORIGINAL DRAWING
IF NOT ONE INCH ON THIS SHEET, ADJUST SCALES ACCORDINGLY.

DRAWING NUMBER
G-101

SHEET NUMBER #