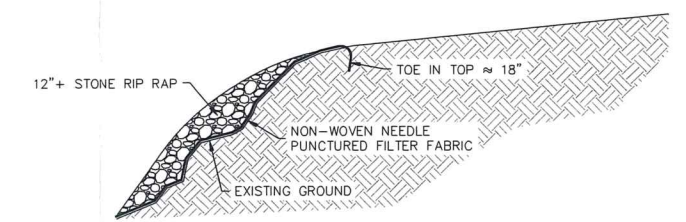
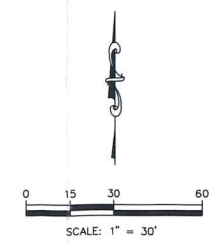


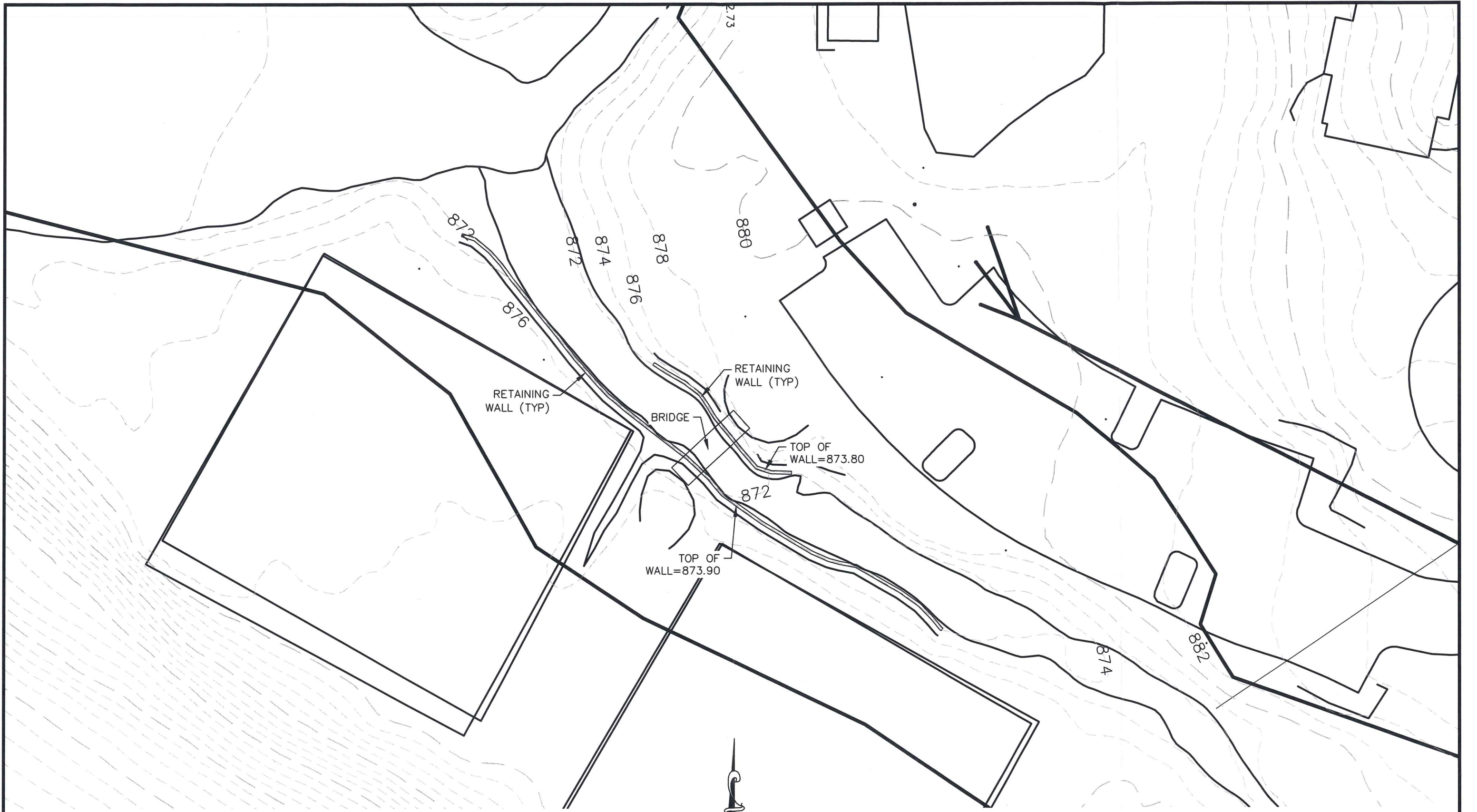
TYPICAL ROCK FACING DETAIL
 APPROXIMATELY 820 LF TOTAL
 AVERAGE HEIGHT=42"



RIP RAP FACING DETAIL
 APPROXIMATELY 100 LF



WATER RESOURCES RECEIVED
APR 18 2024
KS DEPT OF AGRICULTURE



14700 WEST 114TH TERRACE
 LENEXA, KANSAS 66215
 PH. (913) 894-5150
 lx@kveng.com | www.kveng.com

KAW VALLEY ENGINEERING

**WATER RESOURCES
 RECEIVED
 APR 18 2024**

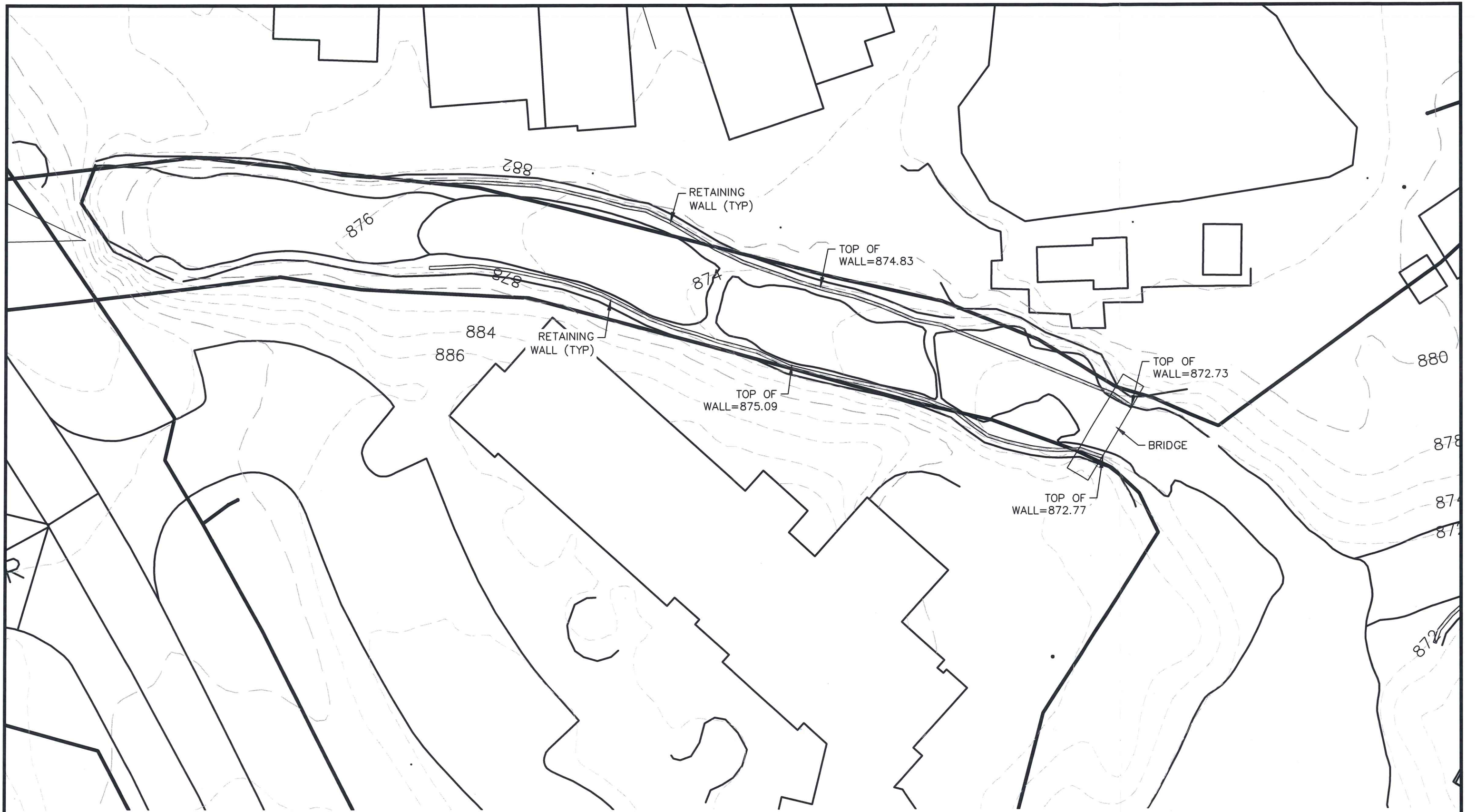
KS DEPT OF AGRICULTURE



SCALE: 1" = 30'

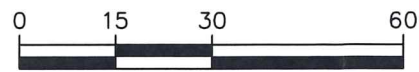
**AS-BUILT WALL IMPROVEMENTS
 STREAM TRIBUTARY H(9-3)**

4/17/24
 STORM IMP AB



14700 WEST 114TH TERRACE
 LENEXA, KANSAS 66215
 PH. (913) 894-5150
 lx@kveng.com | www.kveng.com

KAW VALLEY ENGINEERING



SCALE: 1" = 30'



**WATER RESOURCES
 RECEIVED**

APR 18 2024

**AS-BUILT OF WALL IMPROVEMENTS
 STREAM Ha(9-4)**

4/17/24

STORM IMP AB

KS DEPT OF AGRICULTURE