

**Osage Custom Watershed
Floodplain Mapping Kickoff Meeting**

Tuesday, October 22nd at 10:00 – 11:30 AM

Paola Fire Department Training Room ♦ 202 E Wea Street, Paola, KS 66071

**KDA - Division of Water Resources
Topeka Field Office**

6531 SE Forbes Avenue, Suite B
Topeka, KS 66619

Tara Lanzrath, CFM

Floodplain Mapping Coordinator
785-296-2513
Tara.Lanzrath@ks.gov

Joanna Rohlf, GISP, CFM

Floodplain Mapping
Specialist
785-296-7769
Joanna.rohlf@ks.gov

**Wood Environment & Infrastructure Solutions,
Inc.**

100 SE 9th Street, Suite 400
Topeka, KS 66612

Joe File, PE, CFM

Contract Manager
785-554-9108
joe.file@woodplc.com

John Covey, PE, CFM

Project Manager
316-448-2711
John.covey@woodplc.com

Maria Neeland, PE, CFM

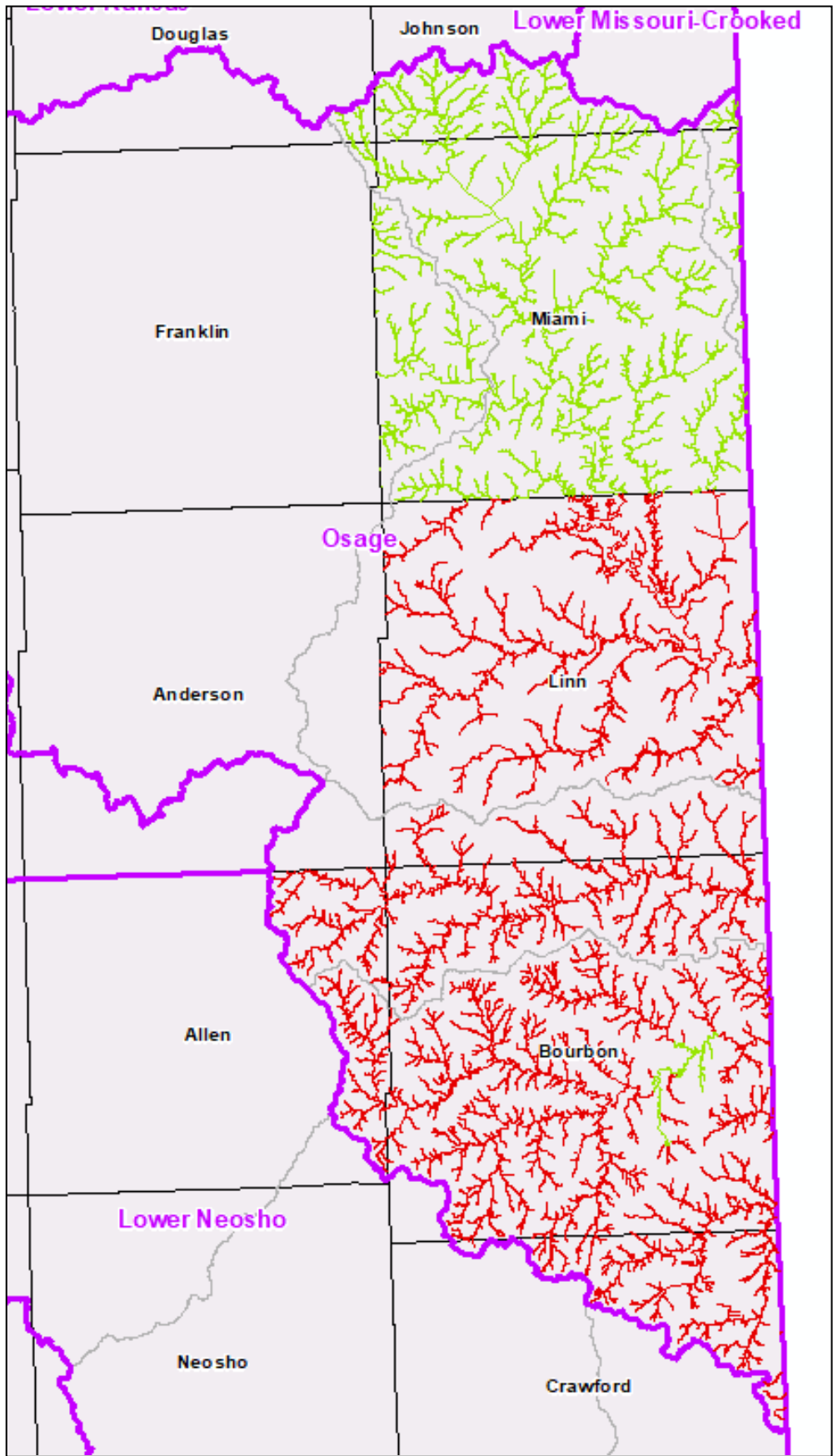
Engineer
785-410-7499
Maria.neeland@woodplc.com

A web map is available to review project information: The web link was provided at the meeting and by email.

Important Upcoming Dates

1. Deadline to submit Community Map Review Comments	November 22, 2019
2. Discovery Meeting	January 2020
3. Data Development (Linn, Allen, Bourbon, and Crawford Counties)	Estimated for 2021

Planned Regulatory Updates



- Planned Update
- No Planned Update