

**Lower Neosho Custom Watershed  
Floodplain Mapping Kickoff Meeting**

Tuesday, November 19<sup>th</sup> at 2:00 PM – 3:30 PM

Parsons City Hall, Basement Meeting Room ♦ 112 S. 17<sup>th</sup> Street, Parsons, KS 67357

**KDA - Division of Water Resources  
Topeka Field Office**  
6531 SE Forbes Avenue, Suite B  
Topeka, KS 66619

**Tara Lanzrath, CFM**  
Floodplain Mapping Coordinator  
785-296-2513  
Tara.Lanzrath@ks.gov

**Joanna Rohlf, GISP, CFM**  
Floodplain Mapping  
Specialist  
785-296-7769  
Joanna.rohlf@ks.gov

**Wood Environment & Infrastructure Solutions,  
Inc.**  
100 SE 9<sup>th</sup> Street, Suite 400  
Topeka, KS 66612

**Joe File, PE, CFM**  
Project Manager  
785-554-9108  
joe.file@woodplc.com

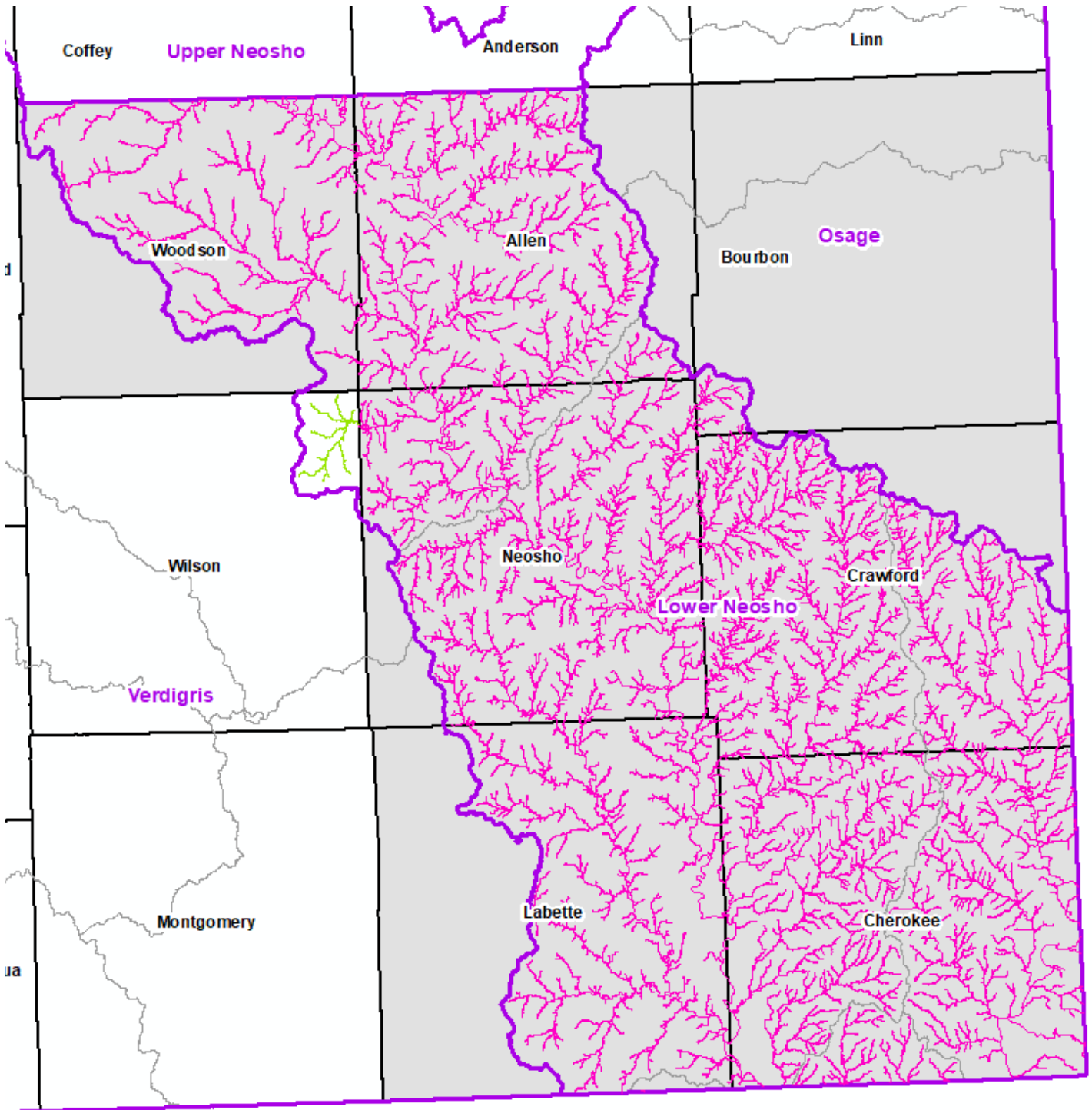
**Maria Neeland, PE, CFM**  
Engineer  
785-410-7499  
Maria.neeland@woodplc.com

A web map is available to review project information: [http://gis2.kda.ks.gov/gis/lower\\_neosho/](http://gis2.kda.ks.gov/gis/lower_neosho/)

**Important Upcoming Dates**

<b>1. Deadline to submit Community Map Review Comments</b>	<b>December 19, 2019</b>
2. Discovery Meeting	February 2020
3. Data Development (Linn, Allen, Bourbon, and Crawford Counties)	Estimated for 2021

# Planned Regulatory Updates



- Planned Update
- No Planned Update