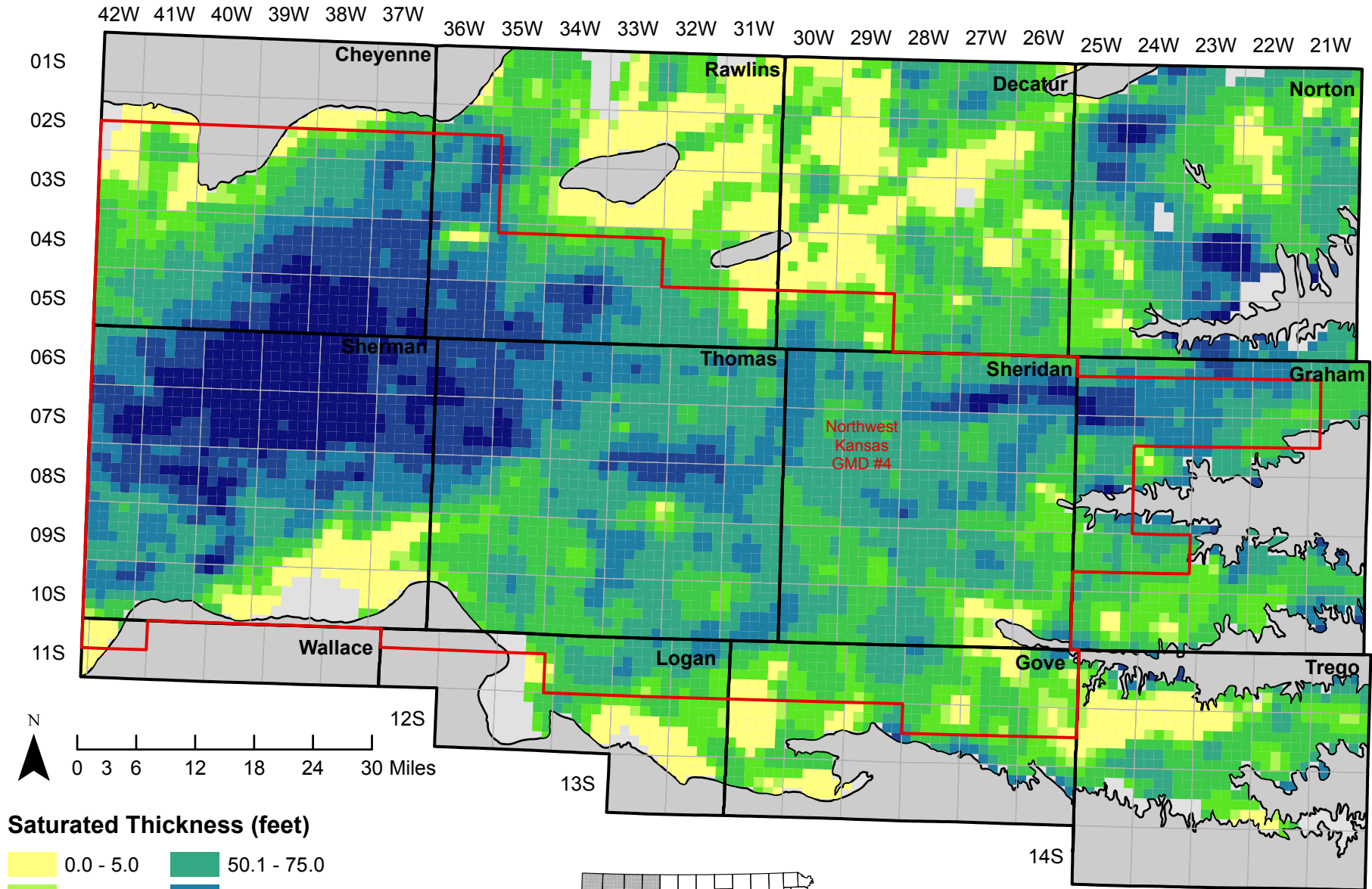


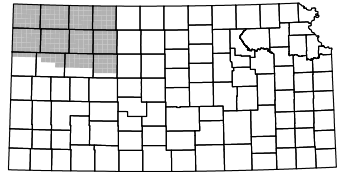
Average Saturated Thickness by Section near GMD No. 4

Average 2014-2016 saturated thickness in the High Plains Aquifer, data provided by the Kansas Geological Survey



Saturated Thickness (feet)

| | |
|-------------|-------------------|
| 0.0 - 5.0 | 50.1 - 75.0 |
| 5.1 - 10.0 | 75.1 - 100.0 |
| 10.1 - 25.0 | 100.1 - 125.0 |
| 25.1 - 50.0 | 125.1 - 178.1 |
| | Insufficient data |



Kansas Department of Agriculture
 Division of Water Resources
 Data: Kansas Geological Survey
 September 16, 2016