

Republican River Basin streamflow-gaging stations with records published by USGS for water year (WY) 2016

[DCP, data-collection platform; NDNR, Nebraska Department of Natural Resources; USACE, U.S. Army Corps of Engineers; USBR, U.S. Bureau of Reclamation; USGS, U.S. Geological Survey]

Station number	Station name	Mean discharge (ft ³ /s)		WY 2016 as percentage of long-term mean	WY 2016 as rank/years (1 highest)	WYs used for long-term mean	Remarks
		WY 2016	Long-term				
06821500	Anikaree River at Haigler, Nebr	0.5	15.9	3.0%	80/84	1933 - 2016	
06823000	North Fork Republican River at Colo-Nebr State Line	39.0	41.2	94.7%	48/81	1935 - 2016	
06823500	Buffalo Creek near Haigler, Nebr	2.3	5.9	39.8%	71/76	1941 - 2016	
06824000	Rock Creek at Parks, Nebr	5.8	12.2	47.1%	76/76	1941 - 2016	
06824500	Republican River at Benkelman, Nebr	42.4	81.3	52.2%	49/49	1948 - 1994, 2015-2016	
06827500	South Fork Republican River near Benkelman, Nebr	5.4	33.5	16.0%	69/79	1938 - 2016	
06835500	Frenchman Creek at Culbertson, Nebr	26.6	63.5	41.9%	63/66	1951 - 2016	Since Enders Reservoir
06836500	Driftwood Creek near McCook, Nebr	4.2	8.1	52.4%	53/70	1947 - 2016	
06838000	Red Willow Creek near Red Willow, Nebr	5.5	13.2	41.9%	51/55	1962 - 2016	Since Hugh Butler Lake
06847000	Beaver Creek near Beaver City, Nebr	1.1	14.9	7.4%	58/79	1938 - 2016	
06847500	Sappa Creek near Stamford, Nebr (USACE funds DCP)	7.7	37.0	20.9%	49/70	1947 - 2016	
06852500	Courtland Canal at Nebr-Kans State Line (USBR DCP)	61.0	75.4	80.9%	45/62	1955 - 2016	
06853020	Republican River at Guide Rock, Nebr	57.1	253.0	22.6%	56/66	1951 - 2016	Based on record from this and upstream station 06853000

USGS stations supported by USGS and/or other Federal or State agencies

06828500	Republican River at Stratton, Nebr	42.2	91.6	46.1%	53/66	1951 - 2016	Funded by USACE and GW/SIP
06837000	Republican River at McCook, Nebr	40.5	119.8	33.8%	56/62	1955 - 2016	Funded by USBR, NDNR, and GW/SIP
06844500	Republican River near Orleans, Nebr	146.4	222.6	65.8%	45/69	1948 - 2016	Funded by USACE and GW/SIP

NDNR stations with USGS/USACE support for DCP, Web display, review, and publishing

06834000	Frenchman Creek at Palisade, Nebr	18.0	58.4	30.8%	65/66	1951 - 2016	
06843500	Republican River at Cambridge, Nebr	136.6	205.4	66.5%	48/67	1950 - 2016	Since Harry Strunk Lake

Online Annual Water Data Reports available at or through:

<http://wdr.water.usgs.gov>
<https://www.usgs.gov/centers/ne-water>

USGS North Platte Field Office

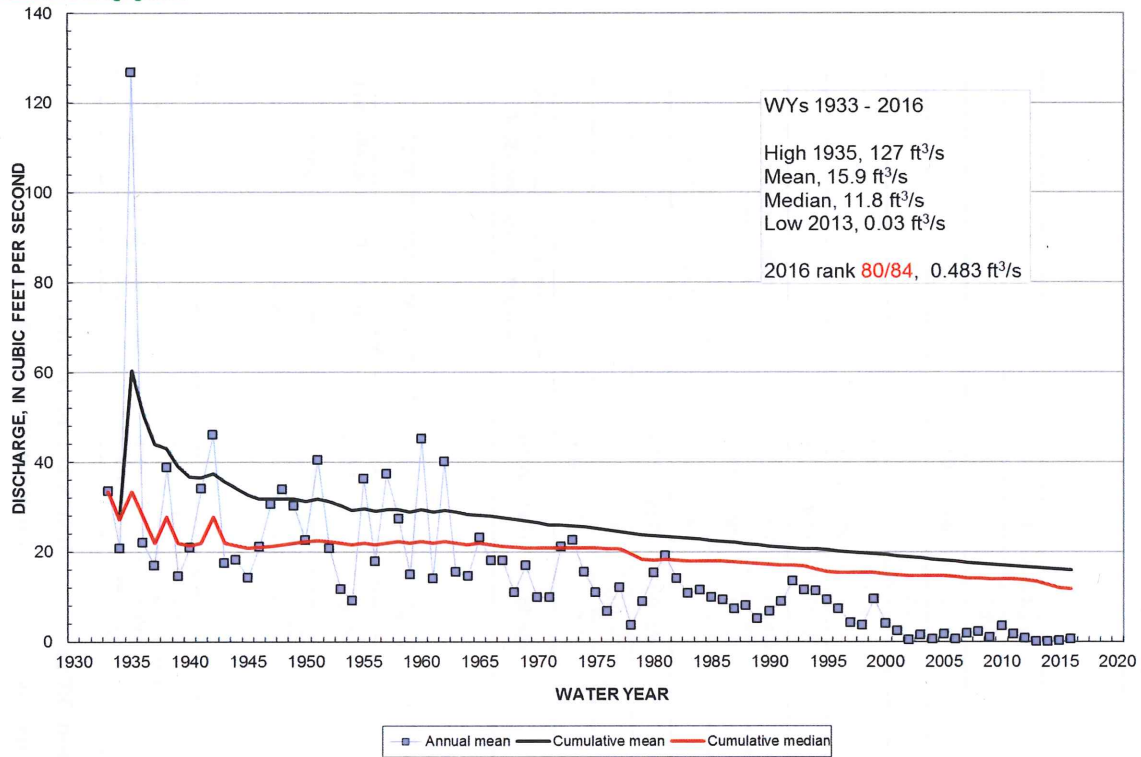
John Miller (jdmiller@usgs.gov)
 308-532-5323

USGS Lincoln Field Office

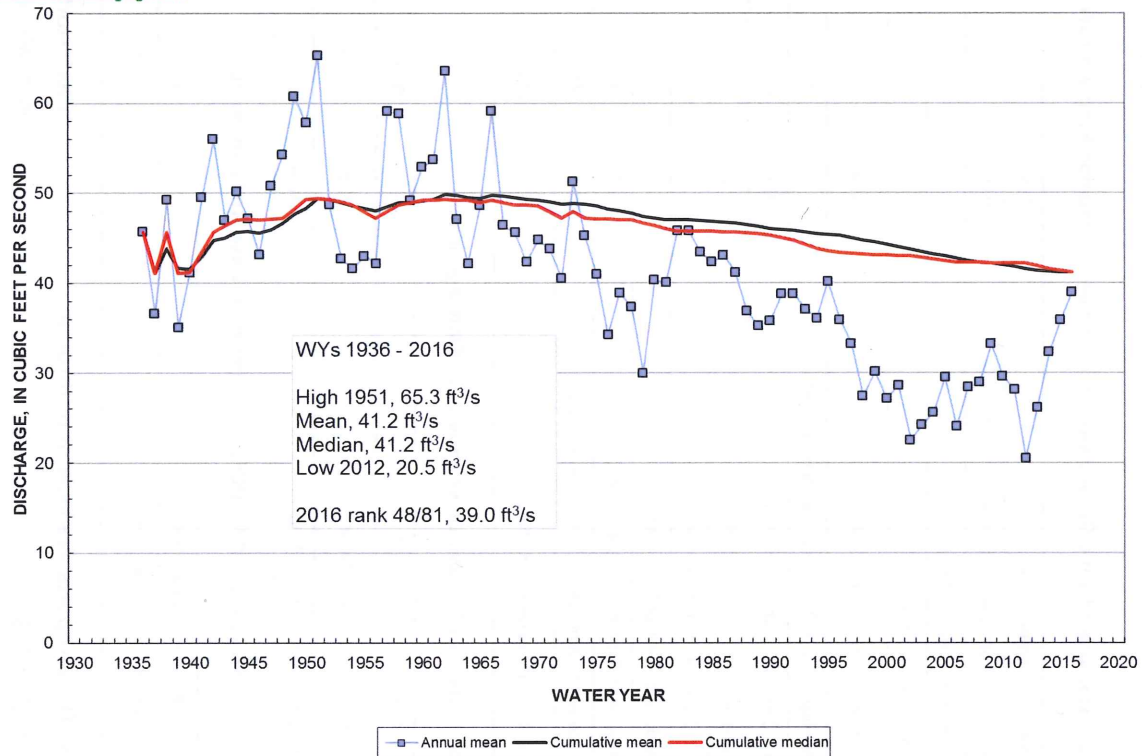
Tim Boyle (tboyle@usgs.gov)
 402-328-4125



06821500 Arikaree River at Haigler, NE

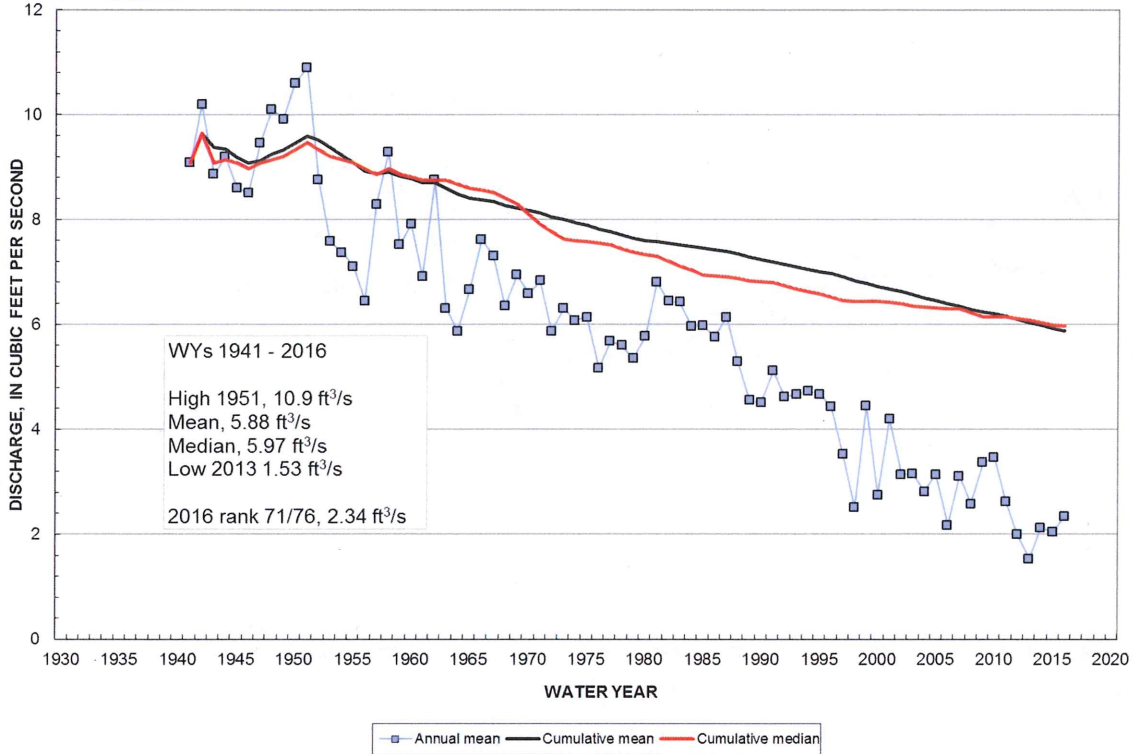


06823000 N Fk Republican River at CO-NE State Line

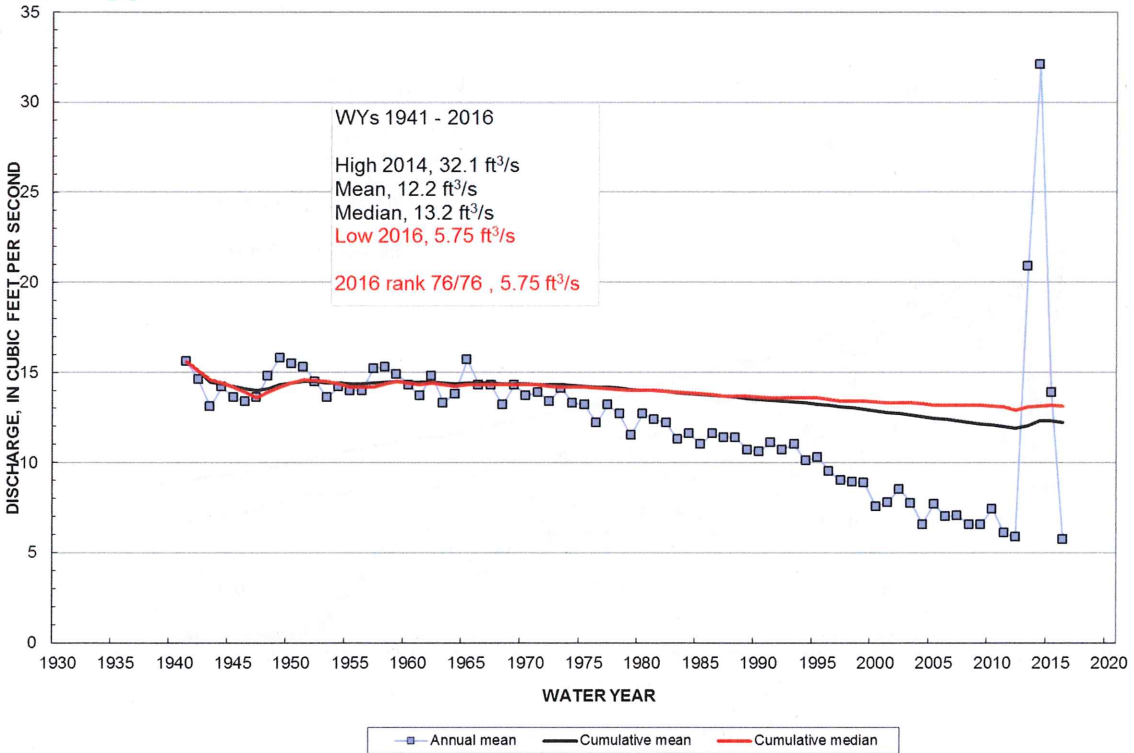




06823500 Buffalo Creek near Haigler, NE

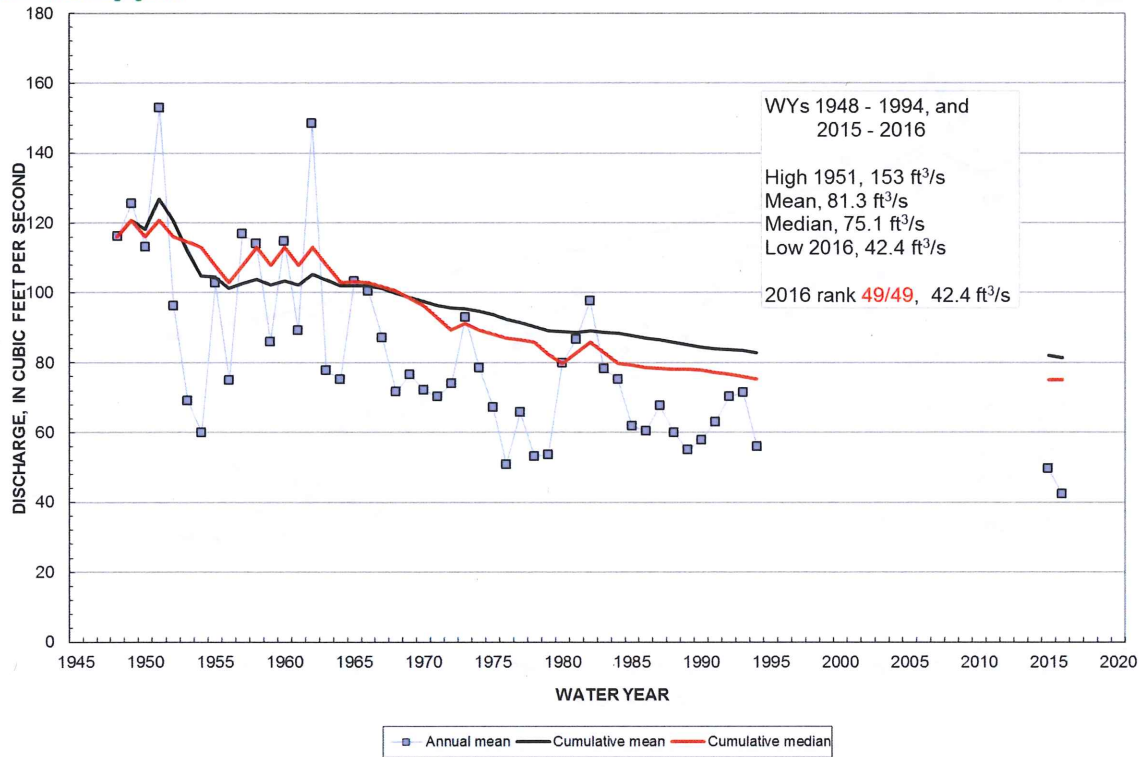


06824000 Rock Creek at Parks, NE

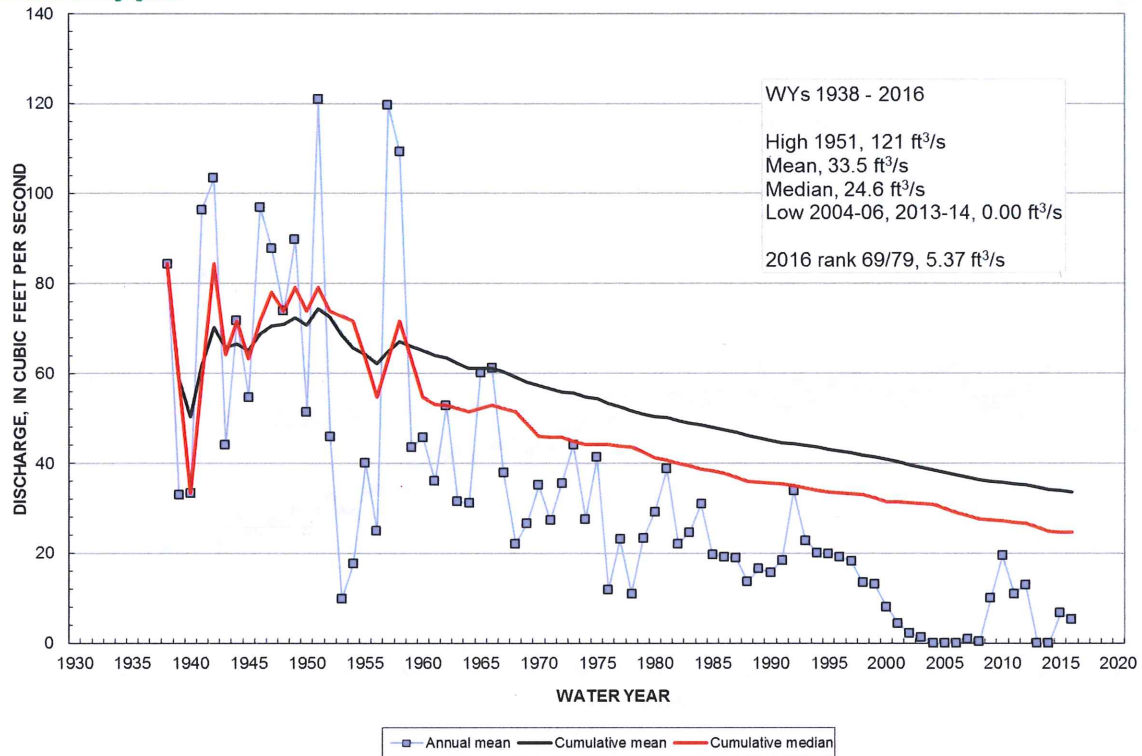




06824500 Republican River at Benkelman, NE

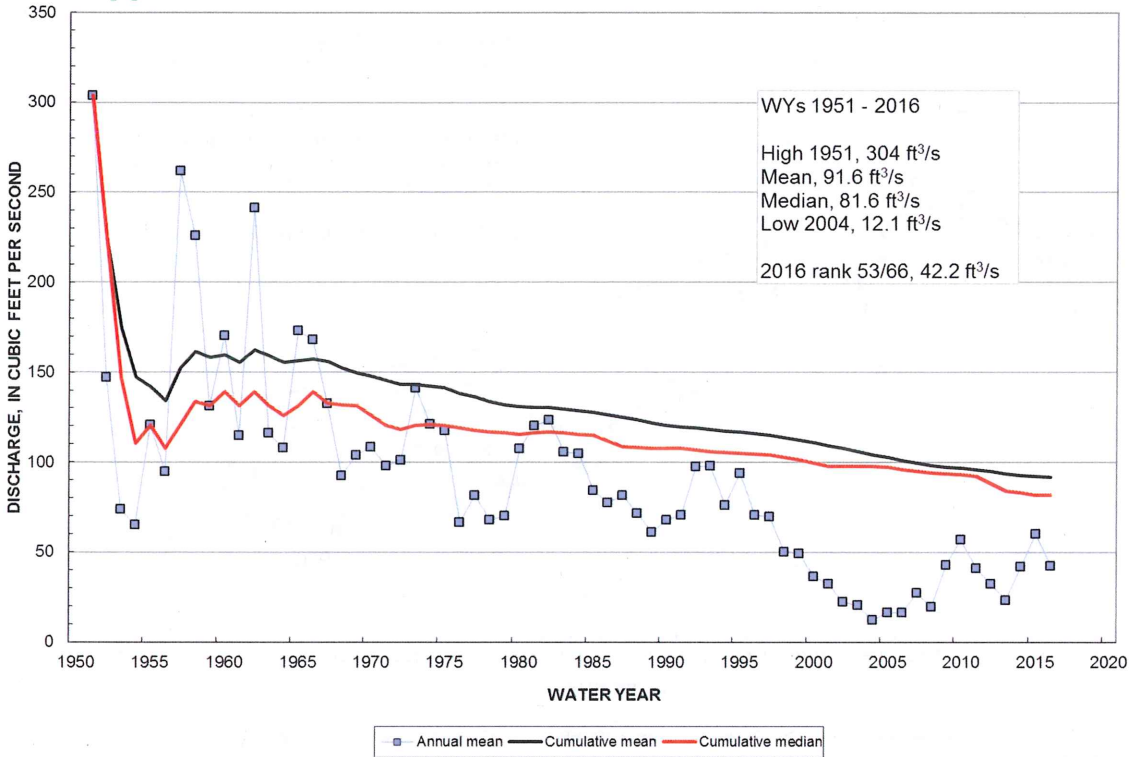


06827500 S Fk Republican River near Benkelman, NE

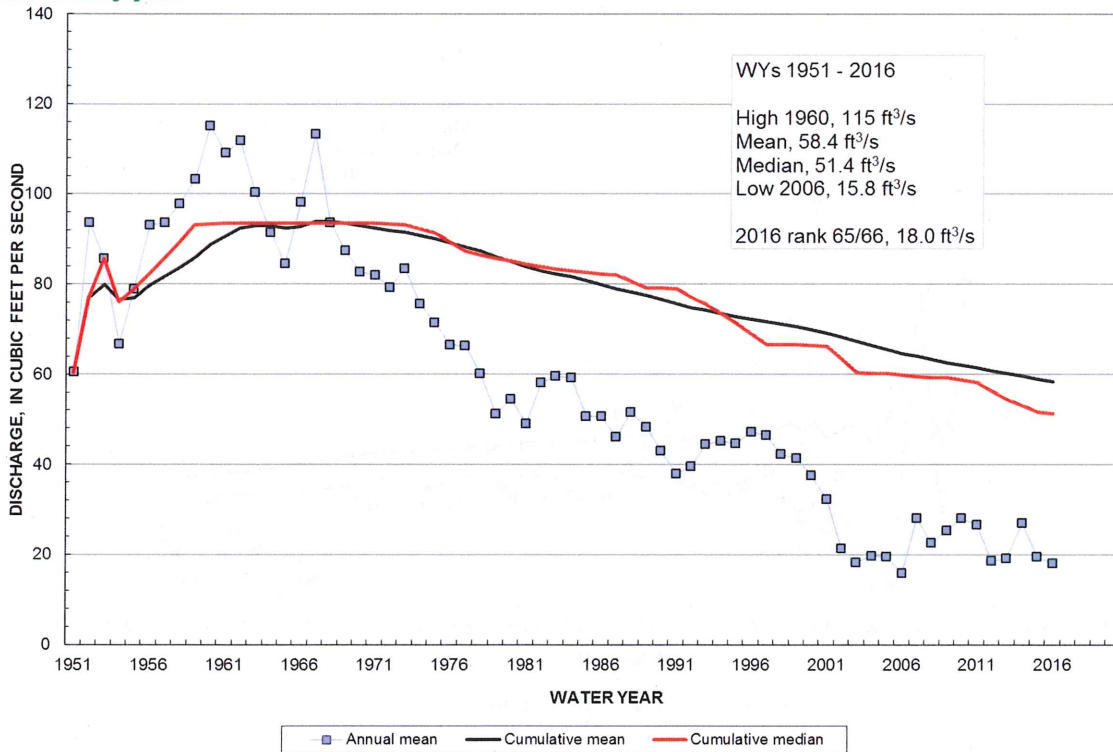




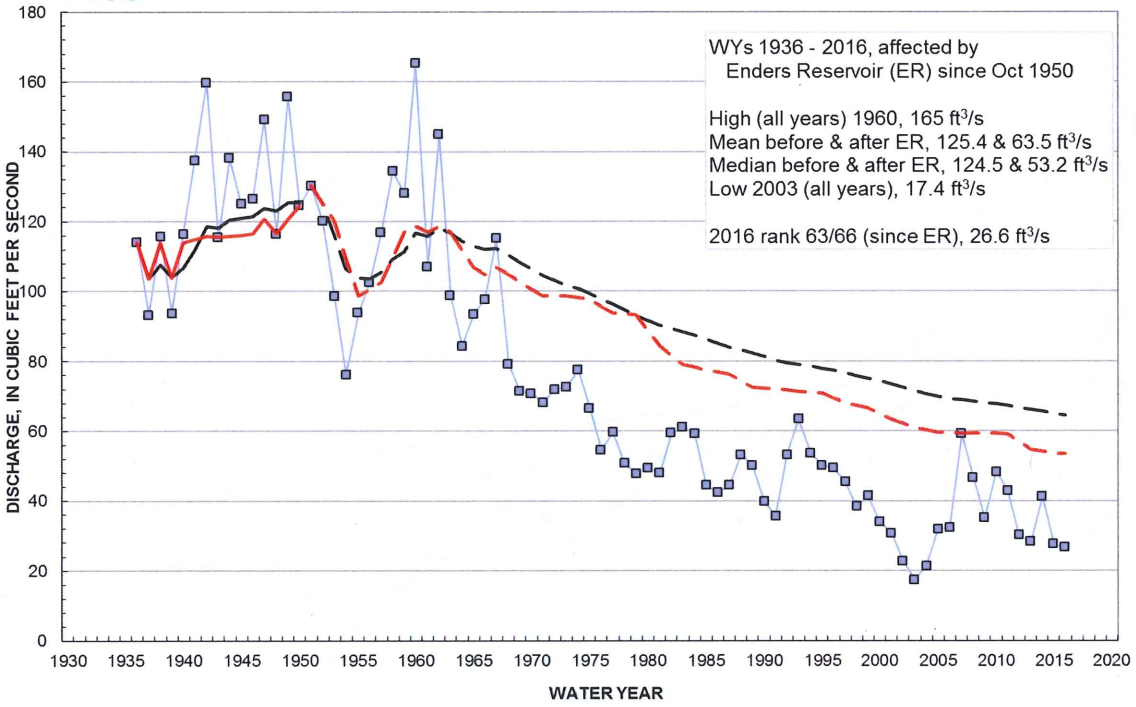
06828500 Republican River at Stratton, NE



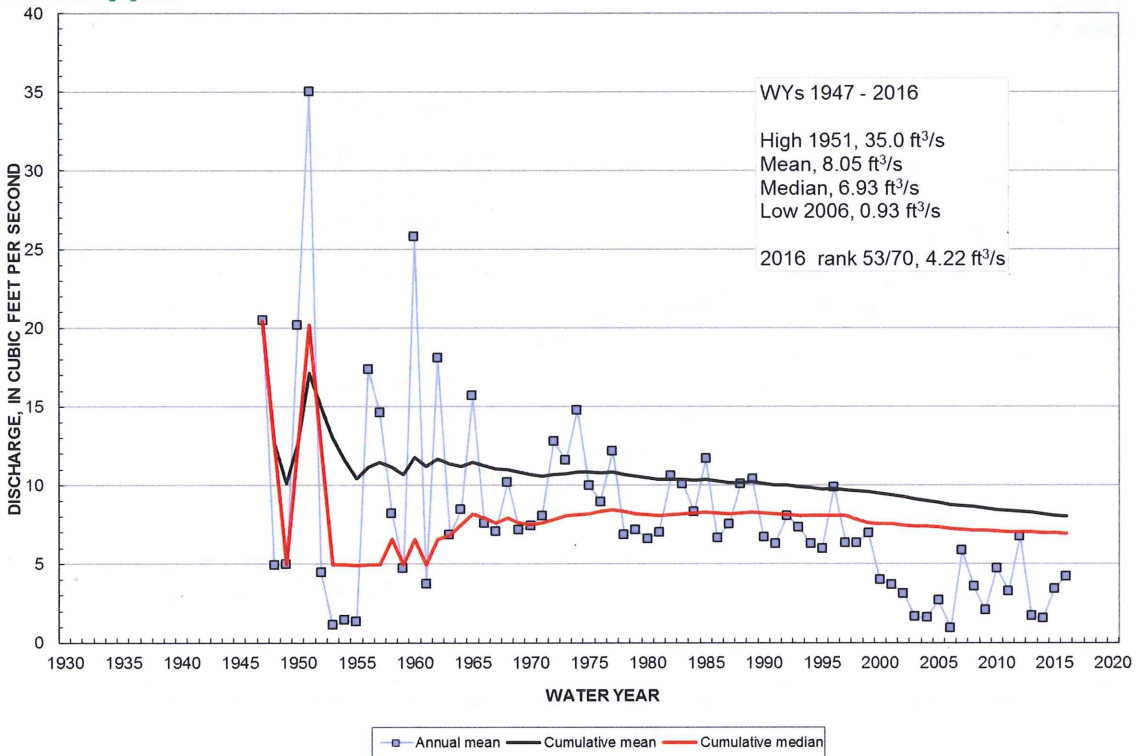
06834000 Frenchman Creek at Palisade, NE



06835500 Frenchman Creek at Culbertson, NE

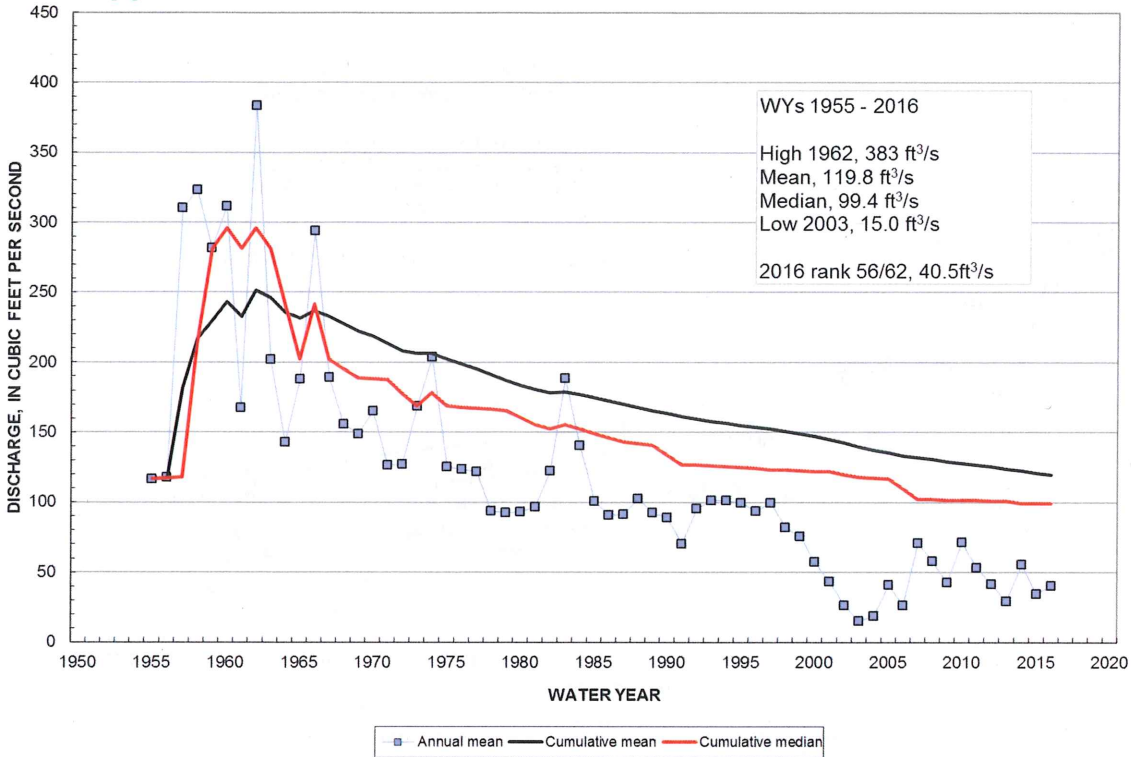


06836500 Driftwood Creek near McCook, NE

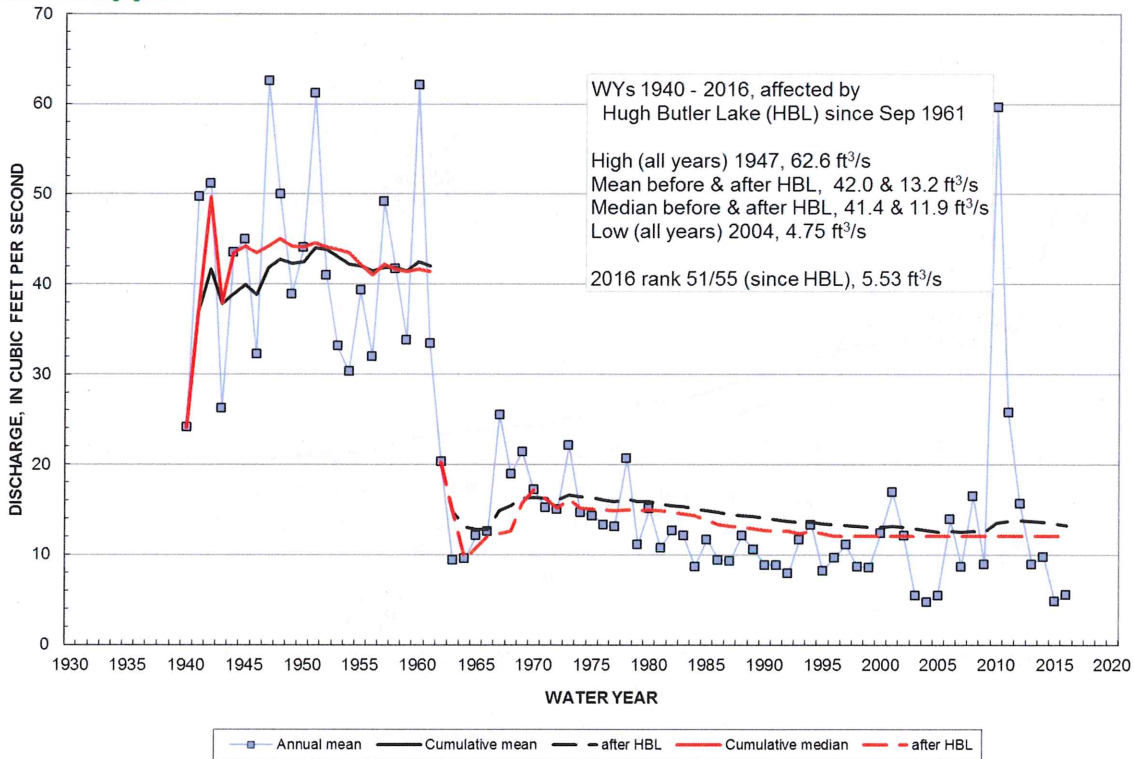




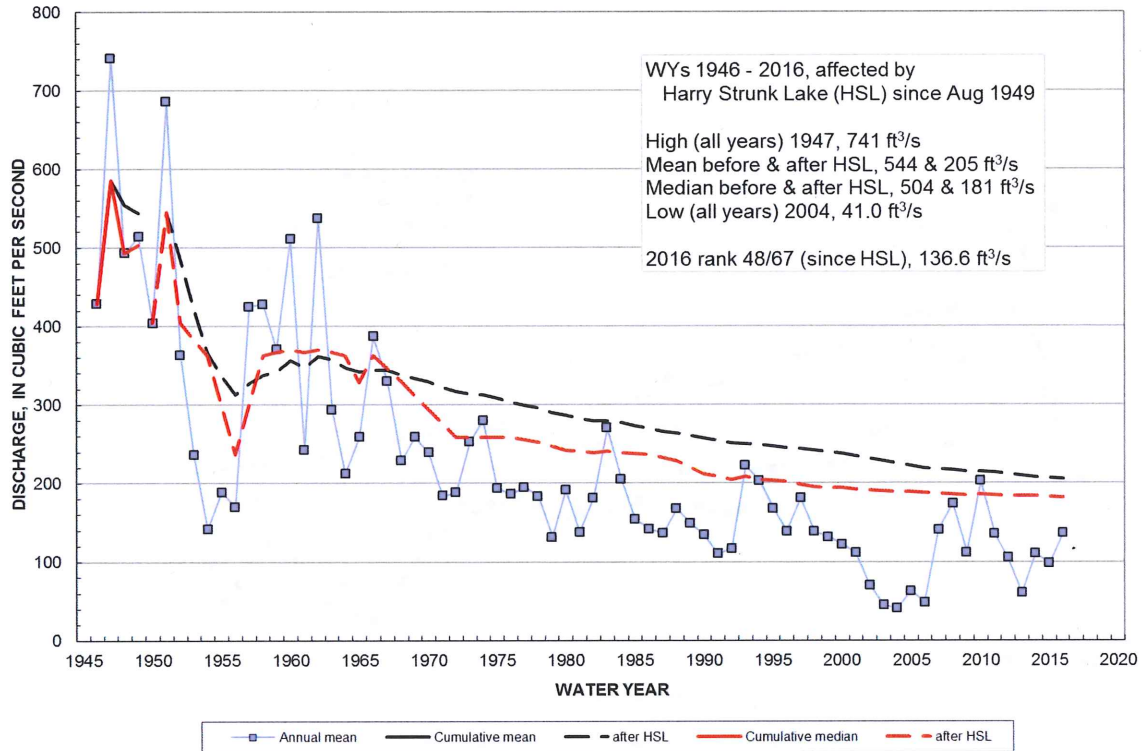
06837000 Republican River at McCook, NE



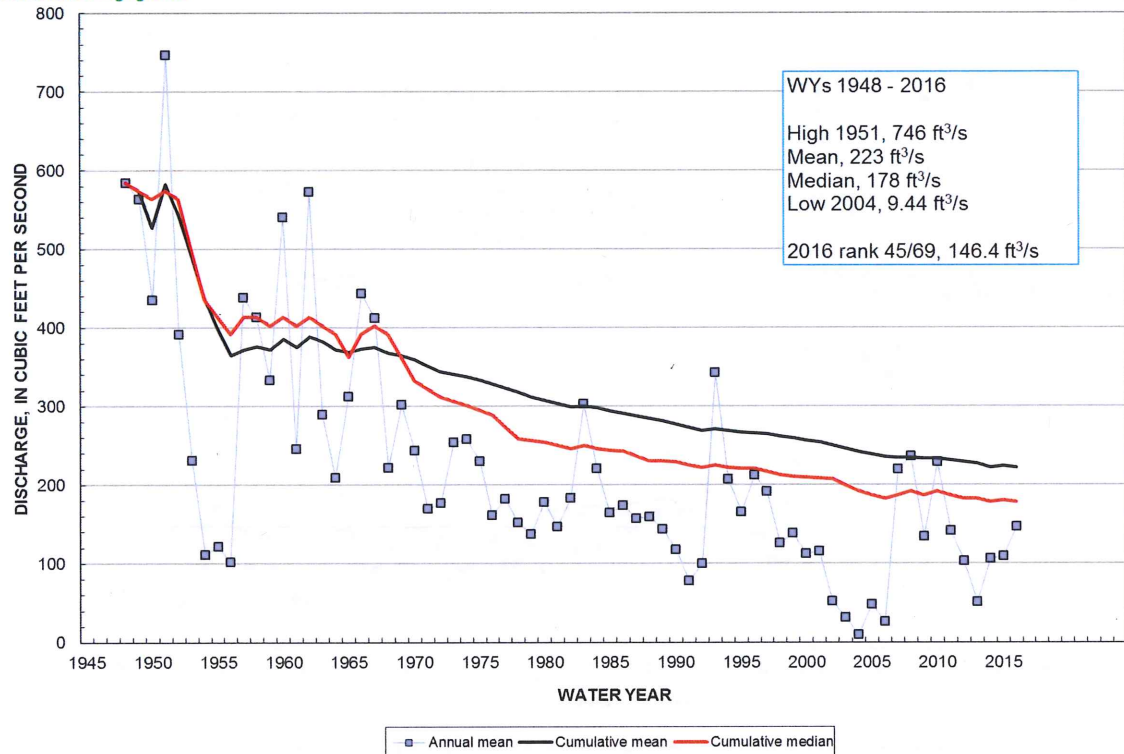
06838000 Red Willow Creek near Red Willow, NE



06843500 Republican River at Cambridge, NE

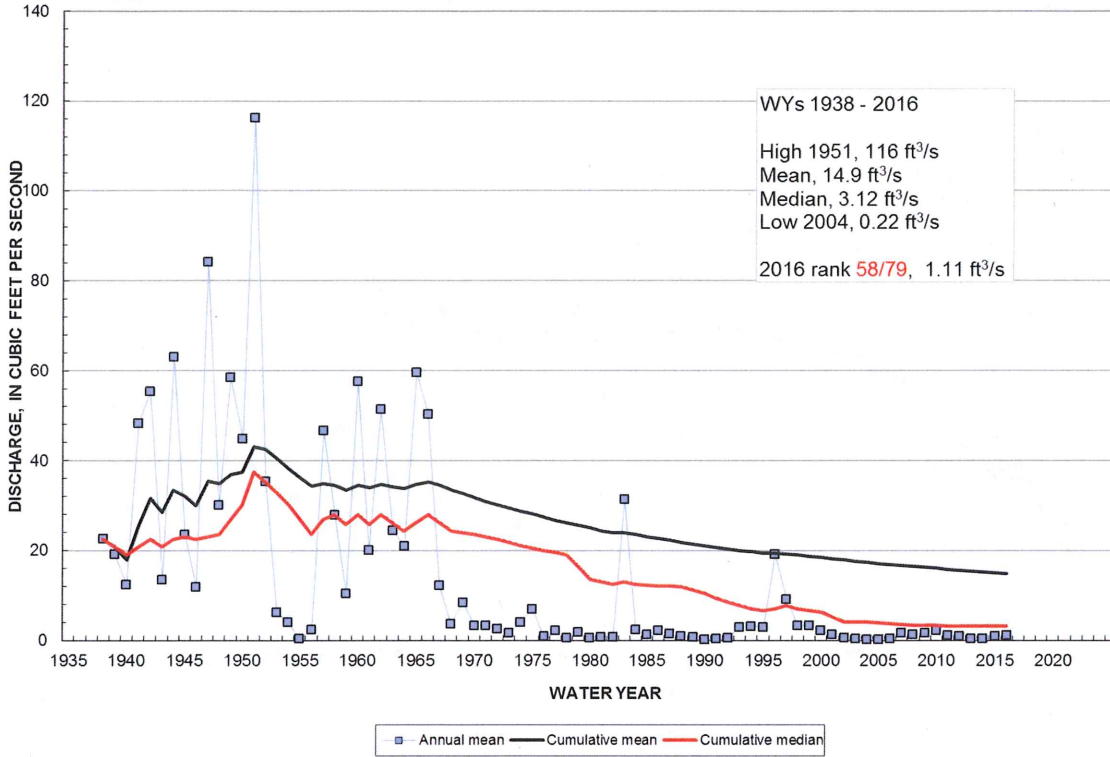


06844500 Republican River near Orleans, NE

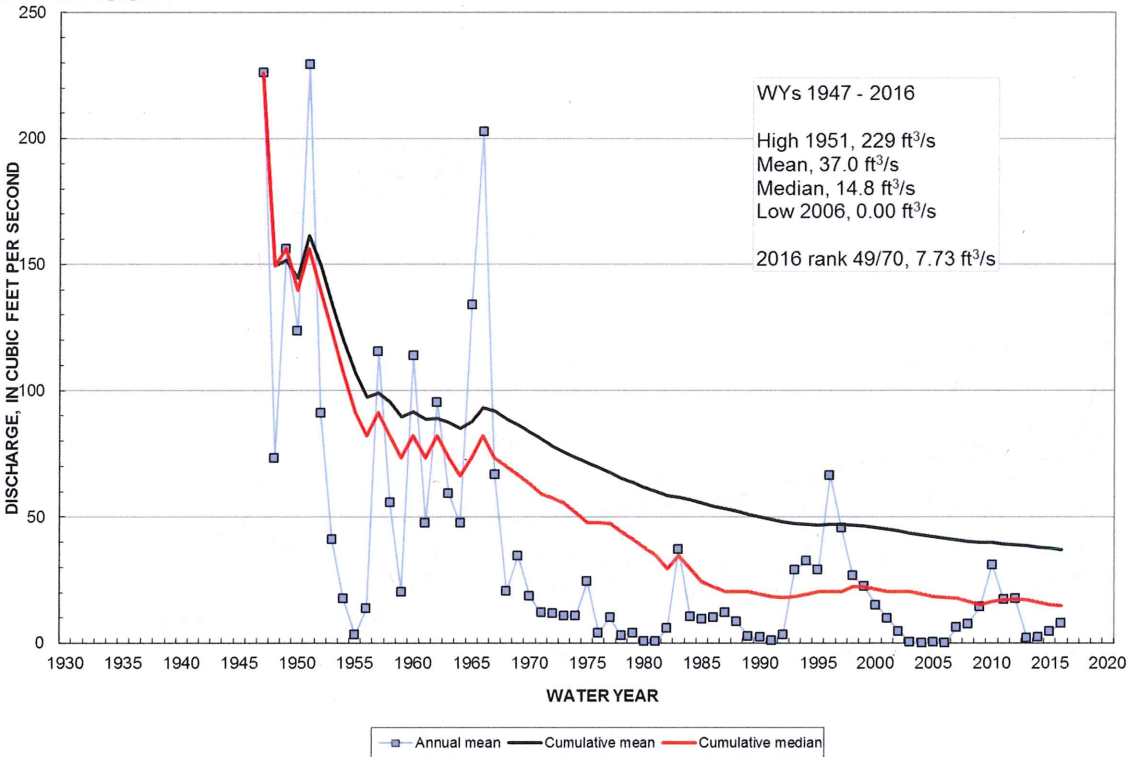




06847000 Beaver Creek near Beaver City, NE

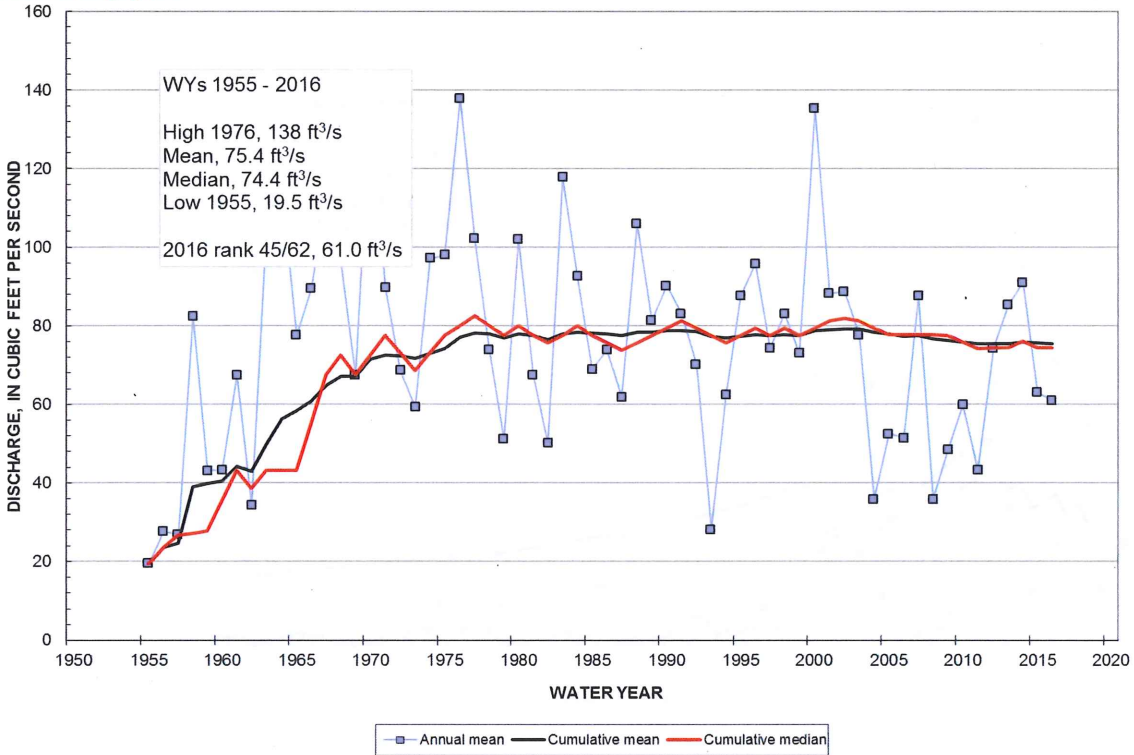


06847500 Sappa Creek near Stamford, NE





06852500 Courtland Canal at NE-KS State Line



06853020 Republican River at Guide Rock, NE

