

Republican River Compact
Administration

ACCOUNTING PROCEDURES AND
REPORTING REQUIREMENTS

Revised May 25, 2017

Table of Contents

- I. Introduction..... 5
- II. Definitions 5
- III. Basic Formulas..... 11
 - A. Calculation of Annual Virgin Water Supply 12
 - 1. Sub-basin calculation 12
 - 2. Main Stem Calculation..... 12
 - 3. Imported Water Supply Credit Calculation 13
 - 4. Augmentation Pumping Volume 13
 - B. Calculation of Computed Water Supply 13
 - 1. Flood Flows..... 14
 - 2. Computed Water Supply Adjustment 14
 - C. Calculation of Annual Allocations 14
 - D. Calculation of Annual Computed Beneficial Consumptive Use 15
 - 1. Groundwater..... 15
 - 2. Surface Water..... 15
 - E. Calculation to Determine Compact Compliance Using Five-Year Running Averages 16
 - F. Calculations To Determine Colorado’s and Kansas’s Compliance with the Sub- basin Non-Impairment Requirement 17
 - G. Calculations To Determine Projected Water Supply 17
 - 1. Procedures to Determine Water Short Years 17
 - 2. Procedures to Determine 130,000 Acre Feet Projected Water Supply 18
 - H. Calculation of Computed Water Supply, Allocations and Computed Beneficial Consumptive Use Above and Below Guide Rock During Water-Short Administration Years..... 18
 - I. Calculation of Imported Water Supply Credits During Water-Short Year Administration Years. 19
 - 1. Monthly Imported Water Supply Credits..... 19
 - 2. Imported Water Supply Credits Above Harlan County Dam 20
 - 3. Imported Water Supply Credits Between Harlan County Dam and Guide Rock During the Irrigation Season 20
 - 4. Imported Water Supply Credits Between Harlan County Dam and Guide Rock During the Non-Irrigation Season 20
 - 5. Other Credits 21
 - J. Calculations of Compact Compliance in Water-Short Year Administration Years 21
- IV. Specific Formulas 22
 - A. Computed Beneficial Consumptive Use..... 22
 - 1. Computed Beneficial Consumptive Use of Groundwater..... 22
 - 2. Computed Beneficial Consumptive Use of Surface Water..... 22
 - a) Non-Federal Canals..... 23
 - b) Individual Surface Water Pumps 23

- c) Federal Canals..... 23
 - d) Non-irrigation Uses..... 23
 - e) Evaporation from Federal Reservoirs 24
 - (1) Harlan County Lake, Evaporation Calculation..... 24
 - (2) Evaporation Computations for Bureau of Reclamation Reservoirs 26
 - f) Non-Federal Reservoir Evaporation 27
 - B. Specific Formulas for Each Sub-basin and the Main Stem 27
 - 1. North Fork of Republican River in Colorado 28
 - 2. Arikaree River 29
 - 3. Buffalo Creek 29
 - 4. Rock Creek..... 30
 - 5. South Fork Republican River..... 30
 - 6. Frenchman Creek in Nebraska 31
 - 7. Driftwood Creek 31
 - 8. Red Willow Creek in Nebraska 32
 - 9. Medicine Creek 33
 - 10. Beaver Creek..... 33
 - 11. Sappa Creek 34
 - 12. Prairie Dog Creek..... 35
 - 13. The North Fork of the Republican River in Nebraska and the Main Stem of the Republican River between the junction of the North Fork and the Arikaree River and the Republican River near Hardy 35
- V. Annual Data/ Information Requirements, Reporting, and Verification 39
 - A. Annual Reporting..... 40
 - 1. Surface water diversions and irrigated acreage..... 40
 - 2. Groundwater pumping and irrigated acreage..... 40
 - 3. Climate information 41
 - 4. Crop Irrigation Requirements 41
 - 5. Streamflow Records from State-Maintained Gaging Records..... 42
 - 6. Platte River Reservoirs..... 42
 - 7. Water Administration Notification 42
 - 8. Moratorium 43
 - 9. Non-Federal Reservoirs 44
 - 10. Augmentation Projects..... 44
 - B. RRCA Groundwater Model Data Input Files 44
 - C. Inputs to RRCA Accounting..... 44
 - 1. Surface Water Information..... 44
 - 2. Groundwater Information 46
 - 3. Summary 46
 - D. Verification..... 46
 - 1. Documentation to be Available for Inspection Upon Request 46
 - 2. Site Inspection..... 47

TABLES 48

Table 1: Annual Virgin and Computed Water Supply, Allocations and Computed Beneficial Consumptive Uses by State, Main Stem and Sub-basin..... 48

Table 2: Original Compact Virgin Water Supply and Allocations 49

Table 3A: Table to Be Used to Calculate Colorado's Five-Year Running Average Allocation and Computed Beneficial Consumptive Use for Determining Compact Compliance for Averaging Periods with No Water Short Year Designations Pursuant to Section III.J. 50

Table 3B. Table to Be Used to Calculate Kansas's Five-Year Running Average Allocation and Computed Beneficial Consumptive Use for Determining Compact Compliance..... 50

Table 3C. Table to Be Used to Calculate Nebraska's Five-Year Running Average Allocation and Computed Beneficial Consumptive Use for Determining Compact Compliance..... 51

Table 4A: Colorado Compliance with the Sub-basin Non-impairment Requirement..... 52

Table 4B: Kansas Compliance with the Sub-basin Non-impairment Requirement 52

Table 5A: Table to Be Used to Calculate Colorado's Compact Compliance for Averaging Periods with Water Short Year Designations Pursuant to Section III.J. 53

Table 5B: Kansas Compliance During Water-Short Year Administration 54

Table 5C: Nebraska Compliance During Water-Short Year Administration..... 55

Table 5D: Nebraska Compliance Under an Alternative Water-Short Year Administration Plan... 56

Table 5E: Nebraska Tributary Compliance During Water-Short Year Administration..... 57

Table 5F: Colorado's Beaver Creek Reduction During Water-Short Years..... 58

FIGURES 59

Basin Map Attached to Compact that Shows the Streams and the Basin Boundaries 59

Line Diagram of Designated Drainage Basins Showing Federal Reservoirs and Sub-basin Gaging Stations 60

Map Showing Sub-basins, Streams, and the Basin Boundaries 61

ATTACHMENTS 62

Attachment 1: Sub-basin Flood Flow Thresholds 62

Attachment 2: Description of the Consensus Plan for Harlan County Lake 63

Attachment 3: Inflows to Harlan County Lake 1993 Level of Development 69

Attachment 4: Evaporation Loss Harlan County Lake 1993 Level of Development..... 71

Attachment 5: Projected Water Supply Spread Sheet Calculations 72

Attachment 6: Computing Water Supplies and Consumptive Use Above Guide Rock..... 74

Attachment 7: Calculations of Return Flows from Bureau of Reclamation Canals..... 74

Attachment 8: Calculation of the Computed Water Supply Adjustment and Remaining Compact Compliance Volume for Implementation of 2016 RRCA Resolution 75

Attachment 9: “Resolution Approving Long-Term Agreements Related to the Operation of Harlan County Lake for Compact Call Years”, adopted August 24, 2016 83

Attachment 10: “Resolution by the Republican River Compact Administration Approving Operation and Accounting for the Colorado Compact Compliance Pipeline and Colorado’s Compliance Efforts in the South Fork Republican River Basin”, adopted August 24, 2016..... 87

Attachment 11: RRCA “Resolution Approving Accounting Changes”, adopted May 25, 2017.... 93

I. Introduction

This document describes the definitions, procedures, basic formulas, specific formulas, and data requirements and reporting formats to be used by the RRCA to compute the Virgin Water Supply, Computed Water Supply, Allocations, Imported Water Supply Credit, Resolution Water Supply Credits, and Computed Beneficial Consumptive Use. These computations shall be used to determine supply, allocations, use and compliance with the Compact according to the Stipulation and the attached RRCA Resolutions. These definitions, procedures, basic and specific formulas, data requirements and attachments may be changed by consent of the RRCA consistent with Subsection I.F of the Stipulation. This document will be referred to as the RRCA Accounting Procedures. Attached to these RRCA Accounting Procedures as Figure 1 is the map attached to the Compact that shows the Basin, its streams and the Basin boundaries.

II. Definitions

The following words and phrases as used in these RRCA Accounting Procedures are defined as follows:

2016 Colorado CCP/SF Resolution: “Resolution Approving Operation and Accounting for the Colorado Compact Compliance Pipeline and Colorado’s Compliance Efforts in the South Fork Republican River Basin”, adopted by the RRCA on August 24, 2016;

2016 CCY HCL Operations Resolution: “Resolution Approving Long-Term Agreements Related to the Operation of Harlan County Lake for Compact Call Years”, adopted by the RRCA on August 24, 2016;

Additional Water Administration Year: a year when the projected or actual irrigation water supply is less than 130,000 Acre-feet of storage available for use from Harlan County Lake as determined by the Bureau of Reclamation using the methodology described in the Harlan County Lake Operation Consensus Plan attached as Appendix K to the Stipulation;

Allocation(s): the water supply allocated to each State from the Computed Water Supply;

Annual: yearly from January 1 through December 31;

Augmentation Pumping Volume: The measured outflow from an augmentation project;

Basin: the Republican River Basin as defined in Article II of the Compact;

Beaver Creek Reduction: the Water Short Year reduction to Colorado’s statewide allocation. The procedure to determine the Beaver Creek Reduction is set forth in III.E;

Beneficial Consumptive Use: that use by which the Water Supply of the Basin is consumed through the activities of man, and shall include water consumed by evaporation from any reservoir, canal, ditch, or irrigated area;

Change in Federal Reservoir Storage: the difference between the amount of water in storage in the reservoir on December 31 of each year and the amount of water in storage on December 31 of the previous year. The current area capacity table supplied by the appropriate federal operating agency shall be used to determine the contents of the reservoir on each date;

Colorado Resolution Water Supply Credit (CORWS Credit): The credit provided for Colorado's Compact compliance activities through augmentation pumping in conformance with the 2016 Colorado CCP/SF Resolution;

Compact: the Republican River Compact, Act of February 22, 1943, 1943 Kan. Sess. Laws 612, codified at Kan. Stat. Ann. § 82a-518 (1997); Act of February 24, 1943, 1943 Neb. Laws 377, codified at 2A Neb. Rev. Stat. App. § 1-106 (1995), Act of March 15, 1943, 1943 Colo. Sess. Laws 362, codified at Colo. Rev. Stat. §§ 37-67-101 and 37-67-102 (2001); Republican River Compact, Act of May 26, 1943, ch. 104, 57 Stat. 86;

Compact Compliance Volume (CCV): a volume of water, as defined under the 2016 CCY HCL Operations Resolution;

Computed Beneficial Consumptive Use: for purposes of Compact accounting, the stream flow depletion resulting from the following activities of man:

- Irrigation of lands in excess of two acres;
- Any non-irrigation diversion of more than 50 Acre-feet per year;
- Multiple diversions of 50 Acre-feet or less that are connected or otherwise combined to serve a single project will be considered as a single diversion for accounting purposes if they total more than 50 Acre-feet;
- Net evaporation from Federal Reservoirs;
- Net evaporation from Non-federal Reservoirs within the surface boundaries of the Basin;
- Any other activities that may be included by amendment of these formulas by the RRCA;

Computed Water Supply: the Virgin Water Supply less the Change in Federal Reservoir Storage in any Designated Drainage Basin, plus the Computed Water Supply Adjustment (for the Main Stem only), and less the Flood Flows;

Computed Water Supply Adjustment: an adjustment made to the Computed Water Supply of the Main Stem reflecting water contributed to the Kansas Account that is not beneficially consumed in the year it is provided, consistent with the terms of the 2016 CCY HCL Operations Resolution;

Designated Drainage Basins: the drainage basins of the specific tributaries and the Main Stem of the Republican River as described in Article III of the Compact. Attached hereto as Figure 3 is a map of the Sub-basins and Main Stem;

Dewatering Well: a Well constructed solely for the purpose of lowering the groundwater elevation;

Federal Reservoirs:

Bonny Reservoir
Swanson Lake
Enders Reservoir
Hugh Butler Lake
Harry Strunk Lake
Keith Sebelius Lake
Harlan County Lake
Lovewell Reservoir

Flood Flows: the amount of water deducted from the Virgin Water Supply as part of the computation of the Computed Water Supply due to a flood event as determined by the methodology described in Subsection III.B.1.;

Gaged Flow: the measured flow at the designated stream gage;

Guide Rock: a point at the Superior-Courtland Diversion Dam on the Republican River near Guide Rock, Nebraska; the Superior-Courtland Diversion Dam gage plus any flows through the sluice gates of the dam, specifically excluding any diversions to the Superior and Courtland Canals, shall be the measure of flows at Guide Rock;

Historic Consumptive Use: that amount of water that has been consumed under appropriate and reasonably efficient practices to accomplish without waste the purposes for which the appropriation or other legally permitted use was lawfully made;

Imported Water Supply: the water supply imported by a State from outside the Basin resulting from the activities of man;

Imported Water Supply Credit: the accretions to stream flow due to water imports from outside of the Basin as computed by the RRCA Groundwater Model. The Imported Water Supply Credit of a State shall not be included in the Virgin Water Supply and shall be counted as a credit/offset against the Computed Beneficial Consumptive Use of water allocated to that State, except as provided in Subsection V.B.2. of the Stipulation and Subsections III.I. – J. of these RRCA Accounting Procedures;

Kansas Account: an account that shall store all Project Water made available for exclusive use by Kansas Bostwick Irrigation District (KBID), and water supplies previously available to KBID under Warren Act Contract(s) existing as of the date of the 2016 Colorado CCP/SF Resolution and the 2016 CCY HCL Operations Resolution;

Kansas Supplemental Account: an account that shall store water supplies not in the Kansas Account and which shall be for use outside of KBID within the state of Kansas in conformance with the 2016 Colorado CCP/SF Resolution and the 2016 CCY HCL Operations Resolution;

Main Stem: the Designated Drainage Basin identified in Article III of the Compact as the North Fork of the Republican River in Nebraska and the main stem of the Republican River between the junction of the North Fork and the Arikaree River and the lowest crossing of the river at the Nebraska-Kansas state line and the small tributaries thereof, and also including the drainage basin Blackwood Creek;

Main Stem Allocation: the portion of the Computed Water Supply derived from the Main Stem and the Unallocated Supply derived from the Sub-basins as shared by Kansas and Nebraska;

Meeting(s): a meeting of the RRCA, including any regularly scheduled annual meeting or any special meeting;

Modeling Committee: the modeling committee established in Subsection IV.C. of the Stipulation;

Moratorium: the prohibition and limitations on construction of new Wells in the geographic area described in Section III. of the Stipulation;

Nebraska Resolution Water Supply Credit (NERWS Credit): The credit provided for Nebraska's Compact compliance activities through augmentation pumping and other water management activities in conformance with the 2016 CCY HCL Operations Resolution;

Non-federal Reservoirs: reservoirs other than Federal Reservoirs that have a storage capacity of 15 Acre-feet or greater at the principal spillway elevation;

Northwest Kansas: those portions of the Sub-basins within Kansas;

Remaining Compact Compliance Volume (RCCV): is a volume of water, as defined under the 2016 CCY HCL Operations Resolution;

Replacement Well: a Well that replaces an existing Well that a) will not be used after construction of the new Well and b) will be abandoned within one year after such construction or is used in a manner that is excepted from the Moratorium pursuant to Subsections III.B.1.c.-f. of the Stipulation;

RRCA: Republican River Compact Administration, the administrative body composed of the State officials identified in Article IX of the Compact;

RRCA Accounting Procedures: this document and all attachments hereto;

RRCA Groundwater Model: the groundwater model developed under the provisions of Subsection IV.C. of the Stipulation and as subsequently adopted and revised through action of the RRCA;

State: any of the States of Colorado, Kansas, and Nebraska;

States: the States of Colorado, Kansas and Nebraska;

Stipulation: the Final Settlement Stipulation to be filed in *Kansas v. Nebraska and Colorado*, No. 126, Original, including all Appendices attached thereto;

Sub-basin: the Designated Drainage Basins, except for the Main Stem, identified in Article III of the Compact. For purposes of Compact accounting the following Sub-basins will be defined as described below:

North Fork of the Republican River in Colorado drainage basin is that drainage area above USGS gaging station number 06823000, North Fork Republican River at the Colorado-Nebraska State Line,

Arikaree River drainage basin is that drainage area above USGS gaging station number 06821500, Arikaree River at Haigler, Nebraska,

Buffalo Creek drainage basin is that drainage area above USGS gaging station number 06823500, Buffalo Creek near Haigler, Nebraska,

Rock Creek drainage basin is that drainage area above USGS gaging station number 06824000, Rock Creek at Parks, Nebraska,

South Fork of the Republican River drainage basin is that drainage area above USGS gaging station number 06827500, South Fork Republican River near Benkelman, Nebraska,

Frenchman Creek (River) drainage basin in Nebraska is that drainage area above USGS gaging station number 06835500, Frenchman Creek in Culbertson, Nebraska,

Driftwood Creek drainage basin is that drainage area above USGS gaging station number 06836500, Driftwood Creek near McCook, Nebraska,

Red Willow Creek drainage basin is that drainage area above USGS gaging station number 06838000, Red Willow Creek near Red Willow, Nebraska,

Medicine Creek drainage basin is that drainage area above the Medicine Creek below Harry Strunk Lake, State of Nebraska gaging station number 06842500; and the drainage area between the gage and the confluence with the Main Stem,

Sappa Creek drainage basin is that drainage area above USGS gaging station number 06847500, Sappa Creek near Stamford, Nebraska and the drainage area between the gage and the confluence with the Main Stem; and excluding the Beaver Creek drainage basin area downstream from the State of Nebraska gaging station number 06847000 Beaver Creek near Beaver City, Nebraska to the confluence with Sappa Creek,

Beaver Creek drainage basin is that drainage area above State of Nebraska gaging station number 06847000, Beaver Creek near Beaver City, Nebraska, and the drainage area between the gage and the confluence with Sappa Creek,

Prairie Dog Creek drainage basin is that drainage area above USGS gaging station number 06848500, Prairie Dog Creek near Woodruff, Kansas, and the drainage area between the gage and the confluence with the Main Stem;

Attached hereto as Figure 2 is a line diagram depicting the streams, Federal Reservoirs and gaging stations;

Test hole: a hole designed solely for the purpose of obtaining information on hydrologic and/or geologic conditions;

Trenton Dam: a dam located at 40 degrees, 10 minutes, 10 seconds latitude and 101 degrees, 3 minutes, 35 seconds longitude, approximately two and one-half miles west of the town of Trenton, Nebraska;

Unallocated Supply: the “water supplies of upstream basins otherwise unallocated” as set forth in Article IV of the Compact;

Upstream of Guide Rock, Nebraska: those areas within the Basin lying west of a line proceeding north from the Nebraska-Kansas state line and following the western edge of Webster County, Township 1, Range 9, Sections 34, 27, 22, 15, 10 and 3 through Webster County, Township 2, Range 9, Sections 34, 27 and 22; then proceeding west along the southern edge of Webster County, Township 2, Range 9, Sections 16, 17 and 18; then proceeding north following the western edge of Webster County, Township 2, Range 9, Sections 18, 7 and 6, through Webster County, Township 3, Range 9, Sections 31, 30, 19, 18, 7 and 6 to its intersection with the northern boundary of Webster County. Upstream of Guide Rock, Nebraska shall not include that area in Kansas east of the 99° meridian and south of the Kansas-Nebraska state line;

Virgin Water Supply: the Water Supply within the Basin undepleted by the activities of man;

Water Short Year Administration: administration in a year when the projected or actual irrigation water supply is less than 119,000 acre feet of storage available for use from Harlan County Lake as determined by the Bureau of Reclamation using the methodology described in the Harlan County Lake Operation Consensus Plan attached as Appendix K to the Stipulation.

Water Supply of the Basin or Water Supply within the Basin: the stream flows within the Basin, excluding Imported Water Supply;

Well: any structure, device or excavation for the purpose or with the effect of obtaining groundwater for beneficial use from an aquifer, including wells, water wells, or groundwater wells as further defined and used in each State’s laws, rules, and regulations.

III. Basic Formulas

The basic formulas for calculating Virgin Water Supply, Computed Water Supply, Imported Water Supply, Allocations and Computed Beneficial Consumptive Use are set forth below. The results of these calculations shall be shown in a table format as shown in Table 1.

Basic Formulas for Calculating Virgin Water Supply, Computed Water Supply, Allocations and Computed Beneficial Consumptive Use	
Sub-basin VWS	= Gage + All CBCU + ΔS – IWS – APV*
Main Stem VWS	= Hardy Gage – Σ Sub-basin gages + All CBCU in the Main Stem + ΔS – IWS
CWS	= VWS - Δ S – FF + CWSA ¹
Allocation for each State in each Sub-basin And Main Stem	= CWS x %
State's Allocation	= Σ Allocations for Each State
State's CBCU	= Σ State's CBCUs in each Sub-basin and Main Stem

¹ The Computed Water Supply Adjustment (CWSA) is only applied to the Main Stem, with respect to Harlan County Lake operations, as described in Subsection IV.B and Attachment 8.

Abbreviations:

APV = Augmentation Pumping Volume

CBCU = Computed Beneficial Consumptive

Use FF = Flood Flows

Gage = Gaged Flow

IWS = Imported Water Supply Credit

CWS = Computed Water Supply

CWSA = Computed Water Supply Adjustment

VWS = Virgin Water Supply

% = the ratio used to allocate the Computed Water Supply between the States. This ratio is based on the allocations in the Compact

 ΔS = Change in Federal Reservoir Storage

Note: * The Augmentation Pumping Volume is not included as part of the Computed Water Supply for the sub-basins or the Main Stem.

A. Calculation of Annual Virgin Water Supply**1. Sub-basin calculation:**

The annual Virgin Water Supply for each Sub-basin will be calculated by adding: a) the annual stream flow in that Sub-basin at the Sub-basin stream gage designated in Section II., b) the annual Computed Beneficial Consumptive Use above that gaging station, and c) the Change in Federal Reservoir Storage in that Sub-basin; and from that total subtract any Imported Water Supply Credit and Augmentation Pumping Volume. The Computed Beneficial Consumptive Use will be calculated as described in Subsection III. D. Adjustments for flows diverted around stream gages and for Computed Beneficial Consumptive Uses in the Sub-basin between the Sub-basin stream gage and the confluence of the Sub-basin tributary and the Main Stem shall be made as described in Subsections III. D. 1 and 2 and IV. B.

2. Main Stem Calculation:

The annual Virgin Water Supply for the Main Stem will be calculated by adding: a) the flow at the Hardy gage minus the flows from the Sub-basin gages listed in Section II, b) the annual Computed Beneficial Consumptive Use in the Main Stem, and c) the Change in Federal Reservoir Storage from Swanson Lake and Harlan County Lake; and from that total subtract any Imported Water Supply Credit for the Main Stem. Adjustments for flows diverted around Sub-basin stream gages and for Computed Beneficial Consumptive Uses in a Sub-basin between the Sub-basin stream gage and the confluence of the Sub-basin tributary and the Mains Stem shall be made as described in Subsections III. D. 1 and 2 and IV.B.,

3. Imported Water Supply Credit Calculation:

The amount of Imported Water Supply Credit shall be determined by the RRCA Groundwater Model. The Imported Water Supply Credit of a State shall not be included in the Virgin Water Supply and shall be counted as a credit/offset against the Computed Beneficial Consumptive Use of water allocated to that State. Currently, the Imported Water Supply Credits shall be determined using two runs of the RRCA Groundwater Model:

- a. The “base” run shall be the run with all groundwater pumping, groundwater pumping recharge, and surface water recharge within the model study boundary for the current accounting year turned “on.”
- b. The “no NE import” run shall be the run with the same model inputs as the base run with the exception that surface water recharge associated with Nebraska’s Imported Water Supply shall be turned “off.” This will be the same “no NE import” run used to determine groundwater Computed Beneficial Consumptive Uses.

The Imported Water Supply Credit shall be the difference in stream flows between these two model runs. Differences in stream flows shall be determined at the same locations as identified in Subsection III.D.1. for the “no pumping” runs. Should another State import water into the Basin in the future, the RRCA will develop a similar procedure to determine Imported Water Supply Credits.

4. Augmentation Pumping Volume

The Augmentation Pumping Volume (APV) of a State shall not be included in the Virgin Water Supply of the applicable sub-basin.

B. Calculation of Computed Water Supply

On any Designated Drainage Basin without a Federal Reservoir, the Computed Water Supply will be equal to the Virgin Water Supply of that Designated Drainage Basin minus Flood Flows.

On any Designated Drainage Basin with a Federal Reservoir, the Computed Water Supply will be equal to the Virgin Water Supply minus the Change in Federal Reservoir Storage in that Designated Drainage Basin and minus Flood Flows. In the Main Stem only, the Computed Water Supply Adjustment will also be added to determine the Computed Water Supply for the Main Stem, as shown in Subsection IV.B and discussed below in sub-section 2 and as illustrated in Attachment 8.

1. Flood Flows

If in any calendar year there are five consecutive months in which the total actual stream flow² at the Hardy gage is greater than 325,000 Acre-feet, or any two consecutive months in which the total actual stream flow is greater than 200,000 Acre-feet, the annual flow in excess of 400,000 Acre-feet at the Hardy gage will be considered to be Flood Flows that will be subtracted from the Virgin Water Supply to calculate the Computed Water Supply, and Allocations. The Flood Flow in excess of 400,000 Acre-feet at the Hardy gage will be subtracted from the Virgin Water Supply of the Main Stem to compute the Computed Water Supply unless the Annual Gaged Flows from a Sub-basin, minus the Augmentation Pumping Volume for that Sub-basin, were in excess of the flows shown for that Sub-basin in Attachment 1. These excess Sub-basin flows shall be considered to be Sub-basin Flood Flows.

If there are Sub-basin Flood Flows, the total of all Sub-basin Flood Flows shall be compared to the amount of Flood Flows at the Hardy gage. If the sum of the Sub-basin Flood Flows are in excess of the Flood Flow at the Hardy gage, the flows to be deducted from each Sub-basin shall be the product of the Flood Flows for each Sub-basin times the ratio of the Flood Flows at the Hardy gage divided by the sum of the Flood Flows of the Sub-basin gages. If the sum of the Sub-basin Flood Flows is less than the Flood Flow at the Hardy gage, the entire amount of each Sub-basin Flood Flow shall be deducted from the Virgin Water Supply to compute the Computed Water Supply of that Sub-basin for that year. The remainder of the Flood Flows will be subtracted from the flows of the Main Stem.

2. Computed Water Supply Adjustment

The Computed Water Supply Adjustment shall be applied to the Main Stem calculations for years when Nebraska's Compact compliance activities are stored in Harlan County Lake for future Kansas use subject to the terms of the 2016 CCY HCL Operations Resolution. The methods used to calculate the Computed Water Supply Adjustment and RCCV are contained in Attachment 8 and will be applied for compliance activities initiated after October 1, 2015.

C. Calculation of Annual Allocations

Article IV of the Compact allocates 54,100 Acre-feet for Beneficial Consumptive Use in Colorado, 190,300 Acre-feet for Beneficial Consumptive Use in Kansas and 234,500 Acre-feet for Beneficial Consumptive Use in Nebraska. The Compact provides that the Compact totals are to be derived from the sources and in the amounts specified in Table 2.

² These actual stream flows reflect Gaged Flows after depletions by Beneficial Consumptive Use and change in reservoir storage above the gage.

The Allocations derived from each Sub-basin to each State shall be the Computed Water Supply multiplied by the percentages set forth in Table 2. In addition, Kansas shall receive 51.1% of the Main Stem Allocation and the Unallocated Supply and Nebraska shall receive 48.9% of the Main Stem Allocation and the Unallocated Supply.

D. Calculation of Annual Computed Beneficial Consumptive Use

1. Groundwater

Computed Beneficial Consumptive Use of groundwater shall be determined by use of the RRCA Groundwater Model. The Computed Beneficial Consumptive Use of groundwater for each State shall be determined as the difference in streamflows using two runs of the model:

The “no NE import” run shall be the run with all groundwater pumping, groundwater pumping recharge, and surface water recharge within the model study boundary for the current accounting year “on”, with the exception that surface water recharge associated with Nebraska’s Imported Water Supply shall be turned “off.”

The “no State pumping” run shall be the run with the same model inputs as the “no NE import” run with the exception that all groundwater pumping and pumping recharge of that State shall be turned “off.”

An output of the model is baseflows at selected stream cells. Changes in the baseflows predicted by the model between the “no NE import” run and the “no-State- pumping” model run is assumed to be the depletions to streamflows, i.e., groundwater computed beneficial consumptive use, due to State groundwater pumping at that location. The values for each Sub-basin will include all depletions and accretions upstream of the confluence with the Main Stem. The values for the Main Stem will include all depletions and accretions in stream reaches not otherwise accounted for in a Sub-basin. The values for the Main Stem will be computed separately for the reach above Guide Rock, and the reach below Guide Rock.

2. Surface Water

The Computed Beneficial Consumptive Use of surface water for irrigation and non-irrigation uses shall be computed by taking the diversions from the river and subtracting the return flows to the river resulting from those diversions, as described in Subsections IV.A.2.a.-d. The Computed Beneficial Consumptive Use of surface water from Federal Reservoir and Non-Federal Reservoir evaporation shall be the net reservoir evaporation from the reservoirs, as described in Subsections IV.A.2.e.-f.

For Sub-basins where the gage designated in Section II. is near the confluence with the Main Stem, each State's Sub-basin Computed Beneficial Consumptive Use of surface water shall be the State's Computed Beneficial Consumptive Use of surface water above the Sub-basin gage. For Medicine Creek, Sappa Creek, Beaver Creek and Prairie Dog Creek, where the gage is not near the confluence with the Main Stem, each State's Computed Beneficial Consumptive Use of surface water shall be the sum of the State's Computed Beneficial Consumptive Use of surface water above the gage, and its Computed Beneficial Consumptive Use of surface water between the gage and the confluence with the Main Stem.

E. Calculation to Determine Compact Compliance Using Five-Year Running Averages

Each year, using the procedures described herein, the RRCA will calculate the Annual Allocations by Designated Drainage Basin and total for each State, the Computed Beneficial Consumptive Use by Designated Drainage Basin and total for each State, CORWS and NERWS (RWS Credits), and the Imported Water Supply Credit that a State may use for the preceding year. These results for the current Compact accounting year as well as the results of the previous four accounting years and the five-year average of these results will be displayed in the format shown in Table 3.

The amount of CORWS Credit shall be determined based on the Compact compliance activities through augmentation pumping in conformance with the 2016 Colorado CCP/SF Resolution. CORWS Credit shall be determined based on the measured outflow from the Colorado Compact Compliance Pipeline. The CORWS Credit shall be counted as a credit/offset against the Computed Beneficial Consumptive Use of water by Colorado.

Colorado's compliance will be measured based on the average of the accounting results from the current accounting year's annual balance and the previous four accounting year's annual balances. If none of those five years is a Water Short Year (as defined in Section III.J.), then Colorado's compliance will be calculated using Table 3A.

If any one of the previous four accounting years or the current accounting year is a Water Short Year (as defined in Section III.J.a and b), then Colorado's compliance will be calculated using Table 5A. For each accounting year that is designated as a Water Short Year pursuant to Section III.J, Colorado's statewide allocation will be reduced by the Beaver Creek Reduction which is the average of the unused Colorado Beaver Creek Sub-basin allocation for the five most-recent Water Short Year designations prior to that accounting year as shown in Table 5F example. The Beaver Creek Reduction will be reported in Table 5F. If the accounting year was not designated as a Water Short Year then the Beaver Creek Reduction will not be applied in that year.

The amount of NERWS Credit shall be determined based on the Compact compliance activities through augmentation pumping and other water management activities in conformance with the 2016 CCY HCL Operations Resolution. NERWS Credit for the year shall be equal to the greater of the Compact Compliance Volume and the contribution from Nebraska's water management activities consistent with the 2016 CCY HCL Operations Resolution. NERWS Credit shall be counted as a credit/offset against the Computed Beneficial Consumptive Use of water by Nebraska. NERWS Credit for Nebraska augmentation activities initiated prior to October 1, 2015, will be equal to the measured outflow from the augmentation projects.

F. Calculations To Determine Colorado's and Kansas's Compliance with the Sub-basin Non-Impairment Requirement

The data needed to determine Colorado's and Kansas's compliance with the Sub-basin non-impairment requirement in Subsection IV.B.2. of the Stipulation are shown in Tables 4.A. and B.

G. Calculations To Determine Projected Water Supply

1. Procedures to Determine Water Short Years

The Bureau of Reclamation will provide each of the States with a monthly or, if requested by any one of the States, a more frequent update of the projected or actual irrigation supply from Harlan County Lake for that irrigation season using the methodology described in the Harlan County Lake Operation Consensus Plan, attached as Appendix K to the Stipulation. The steps for the calculation are as follows:

Step 1. At the beginning of the calculation month (1) the total projected inflow for the calculation month and each succeeding month through the end of May shall be added to the previous end of month Harlan County Lake content and (2) the total projected 1993 level evaporation loss for the calculation month and each succeeding month through the end of May shall then be subtracted. The total projected inflow shall be the 1993 level average monthly inflow or the running average monthly inflow for the previous five years, whichever is less.

Step 2. Determine the maximum irrigation water available by subtracting the sediment pool storage (currently 164,111 Acre-feet) and adding the summer sediment pool evaporation (20,000 Acre-feet) to the result from Step 1.

Step 3. For October through January calculations, take the result from Step 2 and using the Shared Shortage Adjustment Table in Attachment 2 hereto, determine the preliminary irrigation water available for release. The calculation using the end of

December content (January calculation month) indicates the minimum amount of irrigation water available for release at the end of May. For February through June calculations, subtract the maximum irrigation water available for the January calculation month from the maximum irrigation water available for the calculation month. If the result is negative, the irrigation water available for release (January calculation month) stays the same. If the result is positive the preliminary irrigation water available for release (January calculation month) is increased by the positive amount.

Step 4. Compare the result from Step 3 to 119,000 Acre-feet. If the result from Step 3 is less than 119,000 Acre-feet Water Short Year Administration is in effect.

Step 5. The final annual Water-Short Year Administration calculation determines the total estimated irrigation supply at the end of June (calculated in July). Use the result from Step 3 for the end of May irrigation release estimate, add the June computed inflow to Harlan County Lake and subtract the June computed gross evaporation loss from Harlan County Lake.

2. Procedures to Determine 130,000 Acre Feet Projected Water Supply

To determine the preliminary irrigation supply for the October through June calculation months, follow the procedure described in steps 1 through 4 of the “Procedures to determine Water Short Years” Subsection III. G. 1. The result from step 4 provides the forecasted water supply, which is compared to 130,000 Acre-feet. For the July through September calculation months, use the previous end of calculation month preliminary irrigation supply, add the previous month’s Harlan County Lake computed inflow and subtract the previous month’s computed gross evaporation loss from Harlan County Lake to determine the current preliminary irrigation supply. The result is compared to 130,000 Acre-feet.

H. Calculation of Computed Water Supply, Allocations and Computed Beneficial Consumptive Use Above and Below Guide Rock During Water-Short Administration Years.

For Water-Short-Administration Years, in addition to the normal calculations, the Computed Water Supply, Allocations, Computed Beneficial Consumptive Use, NERWS Credit, and Imported Water Supply Credits shall also be calculated above Guide Rock as shown in Table 5C. These calculations shall be done in the same manner as in non-Water-Short Administration years except that water supplies originating below Guide Rock shall not be included in the calculations of water supplies originating above Guide Rock. The calculations of Computed Beneficial Consumptive Uses shall be also done in the same manner as in non-Water-Short Administration years except that Computed Beneficial Consumptive Uses from diversions below Guide Rock shall not be included.

The depletions from the water diverted by the Superior and Courtland Canals at the Superior- Courtland Diversion Dam shall be included in the calculations of Computed Beneficial Consumptive Use above Guide Rock. Imported Water Supply Credits above Guide Rock, as described in Sub-section III.I., may be used as offsets against the Computed Beneficial Consumptive Use above Guide Rock by the State providing the Imported Water Supply Credits.

The Computed Water Supply of the Main Stem reach between Guide Rock and the Hardy gage shall be determined by taking the difference in stream flow at Hardy and Guide Rock, adding Computed Beneficial Consumptive Uses in the reach (this does not include the Computed Beneficial Consumptive Use from the Superior and Courtland Canal diversions), and subtracting return flows from the Superior and Courtland Canals in the reach. The Computed Water Supply above Guide Rock shall be determined by subtracting the Computed Water Supply of the Main Stem reach between Guide Rock and the Hardy gage from the total Computed Water Supply. Nebraska's Allocation above Guide Rock shall be determined by subtracting 48.9% of the Computed Water Supply of the Main Stem reach between Guide Rock and the Hardy gage from Nebraska's total Allocation. Nebraska's Computed Beneficial Consumptive Uses above Guide Rock shall be determined by subtracting Nebraska's Computed Beneficial Consumptive Uses below Guide Rock from Nebraska's total Computed Beneficial Consumptive Use.

I. Calculation of Imported Water Supply Credits During Water-Short Year Administration Years.

Imported Water Supply Credit during Water-Short Year Administration years shall be calculated consistent with Subsection V.B.2.b. of the Stipulation.

The following methodology shall be used to determine the extent to which Imported Water Supply Credit, as calculated by the RRCA Groundwater Model, can be credited to the State importing the water during Water-Short Year Administration years.

1. Monthly Imported Water Supply Credits

The RRCA Groundwater Model will be used to determine monthly Imported Water Supply Credits by State in each Sub-basin and for the Main Stem. The values for each Sub-basin will include all depletions and accretions upstream of the confluence with the Main Stem. The values for the Main Stem will include all depletions and accretions in stream reaches not otherwise accounted for in a Sub-basin. The values for the Main Stem will be computed separately for the reach 1) above Harlan County Dam, 2) between Harlan County Dam and Guide Rock, and 3) between Guide Rock and the Hardy gage. The Imported Water Supply Credit shall be the difference in stream flow for two runs of the model: a) the "base" run and b) the "no State import" run.

During Water-Short Year Administration years, Nebraska's credits in the Sub-basins shall be determined as described in Section III. A. 3.

2. Imported Water Supply Credits Above Harlan County Dam

Nebraska's Imported Water Supply Credits above Harlan County Dam shall be the sum of all the credits in the Sub-basins and the Main Stem above Harlan County Dam.

3. Imported Water Supply Credits Between Harlan County Dam and Guide Rock During the Irrigation Season

- a. During Water-Short Year Administration years, monthly credits in the reach between Harlan County Dam and Guide Rock shall be determined as the differences in the stream flows between the two runs at Guide Rock.
- b. The irrigation season shall be defined as starting on the first day of release of water from Harlan County Lake for irrigation use and ending on the last day of release of water from Harlan County Lake for irrigation use.
- c. Credit as an offset for a State's Computed Beneficial Consumptive Use above Guide Rock will be given to all the Imported Water Supply accruing in the reach between Harlan County Dam and Guide Rock during the irrigation season. If the period of the irrigation season does not coincide with the period of modeled flows, the amount of the Imported Water Supply credited during the irrigation season for that month shall be the total monthly modeled Imported Water Supply Credit times the number of days in the month occurring during the irrigation season divided by the total number of days in the month.

4. Imported Water Supply Credits Between Harlan County Dam and Guide Rock During the Non-Irrigation Season

- a. Imported Water Supply Credit shall be given between Harlan County Dam and Guide Rock during the period that flows are diverted to fill Lovewell Reservoir to the extent that imported water was needed to meet Lovewell Reservoir target elevations.
- b. Fall and spring fill periods shall be established during which credit shall be given for the Imported Water Supply Credit accruing in the reach. The

fall period shall extend from the end of the irrigation season to December 1. The spring period shall extend from March 1 to May 31. The Lovewell target elevations for these fill periods are the projected end of November reservoir level and the projected end of May reservoir level for most probable inflow conditions as indicated in Table 4 in the current Annual Operating Plan prepared by the Bureau of Reclamation.

c. The amount of water needed to fill Lovewell Reservoir for each period shall be calculated as the storage content of the reservoir at its target elevation at the end of the fill period minus the reservoir content at the start of the fill period plus the amount of net evaporation during this period minus White Rock Creek inflows for the same period.

d. If the fill period as defined above does not coincide with the period of modeled flows, the amount of the Imported Water Supply Credit during the fill period for that month shall be the total monthly modeled Imported Water Supply Credit times the number of days in the month occurring during the fill season divided by the total number of days in the month.

e. The amount of non-imported water available to fill Lovewell Reservoir to the target elevation shall be the amount of water available at Guide Rock during the fill period minus the amount of the Imported Water Supply Credit accruing in the reach during the same period.

f. The amount of the Imported Water Supply Credit that shall be credited against a State's Consumptive Use shall be the amount of water imported by that State that is available in the reach during the fill period or the amount of water needed to reach Lovewell Reservoir target elevations minus the amount of non-imported water available during the fill period, whichever is less.

5. Other Credits

Kansas and Nebraska will explore crediting Imported Water Supply that is otherwise useable by Kansas.

J. Calculations of Compact Compliance in Water-Short Year Administration Years

During Water-Short Year Administration, using the procedures described in Subsections III.A-D, the RRCA will calculate the Annual Allocations for each State, the Computed Beneficial Consumptive Use by each State, and Imported Water Supply Credit and RWS Credits that a State may use to offset Computed Beneficial Consumptive Use in that year. The resulting annual and average values will be calculated as displayed in Tables 5 A-C and E.

The compliance tests outlined in Tables 5B – 5E shall not apply when on or before June 30:

- a. the sum of all waters available for irrigation from Harlan County Lake, including irrigation releases prior to June 30 of each year, the RCCV (as calculated in Attachment 8), and the volume in the Kansas Supplemental Account, is greater than or equal to 119,000 acre-feet; or
- b. the sum of the Kansas Account, Kansas Supplemental Account, and irrigation releases made from both accounts prior to June 30 of each year is greater than or equal to 68,000 acre-feet.

For the State of Colorado, if the current accounting year or any one of the previous four years is designated as a Water Short Year based on the criteria in Section III.J.a or b above, then Colorado's compliance will be calculated using Table 5A. The methods used to implement the Table 5A calculations will be in conformance with Section III.E.

If Nebraska is implementing an Alternative Water-Short-Year Administration Plan, data to determine Compact compliance will be shown in Table 5D. Nebraska's compliance with the Compact will be determined in the same manner as Nebraska's Above Guide Rock compliance except that compliance will be based on a three-year running average of the current year and previous two year calculations. In addition, Table 5 D. will display the sum of the previous two-year difference in Allocations above Guide Rock and Computed Beneficial Consumptive Uses above Guide Rock minus any Imported Water Credits and compare the result with the Alternative Water-Short-Year Administration Plan's expected decrease in Computed Beneficial Consumptive Use above Guide Rock. Nebraska will be within compliance with the Compact as long as the three-year running average difference in Column 8 is positive and the sum of the previous year and current year deficits above Guide Rock are not greater than the expected decrease in Computed Beneficial Consumptive Use under the plan.

IV. Specific Formulas

A. Computed Beneficial Consumptive Use

1. Computed Beneficial Consumptive Use of Groundwater:

The Computed Beneficial Consumptive Use caused by groundwater diversion shall be determined by the RRCA Groundwater Model as described in Subsection III.D.1.

2. Computed Beneficial Consumptive Use of Surface Water:

The Computed Beneficial Consumptive Use of surface water shall be calculated as follows:

a) Non-Federal Canals

Computed Beneficial Consumptive Use from diversions by non- federal canals shall be 60 percent of the diversion; the return flow shall be 40 percent of the diversion

b) Individual Surface Water Pumps

Computed Beneficial Consumptive Use from small individual surface water pumps shall be 75 percent of the diversion; return flows will be 25 percent of the diversion unless a state provides data on the amount of different system types in a Sub-basin, in which case the following percentages will be used for each system type:

Gravity Flow	30%
Center Pivot	17%
LEPA	10%

c) Federal Canals

Computed Beneficial Consumptive Use of diversions by Federal canals will be calculated as shown in Attachment 7. For each Bureau of Reclamation Canal the field deliveries shall be subtracted from the diversion from the river to determine the canal losses. The field delivery shall be multiplied by one minus an average system efficiency for the district to determine the loss of water from the field. Eighty-two percent of the sum of the field loss plus the canal loss shall be considered to be the return flow from the canal diversion for diversions occurring during the irrigation season (May-September). For recharge diversions occurring during the non-irrigation season (October-April), 92 percent of the sum of the field loss plus the canal loss shall be considered to be the return flow from the canal diversion. The assumed field efficiencies and the amount of the field and canal loss that reaches the stream may be reviewed by the RRCA and adjusted as appropriate to insure their accuracy.

d) Non-irrigation Uses

Any non-irrigation uses diverting or pumping more than 50 acre-feet per year will be required to measure diversions. Non-irrigation uses diverting more than 50 Acre-feet per year will be assessed a Computed Beneficial Consumptive Use of 50% of what is pumped or diverted, unless the entity presents evidence to the RRCA demonstrating a different percentage should be used.

- e) Evaporation from Federal Reservoirs
Net Evaporation from Federal Reservoirs will be calculated as follows:

- (1) Harlan County Lake, Evaporation Calculation

April 1 through October 31:

Evaporation from Harlan County Lake is calculated by the Corps of Engineers on a daily basis from April 1 through October 31. Daily readings are taken from a Class A evaporation pan maintained near the project office. Any precipitation recorded at the project office is added to the pan reading to obtain the actual evaporation amount. The pan value is multiplied by a pan coefficient that varies by month. These values are:

March	.56
April	.52
May	.53
June	.60
July	.68
August	.78
September	.91
October	1.01

The pan coefficients were determined by studies the Corps of Engineers conducted a number of years ago. The result is the evaporation in inches. It is divided by 12 and multiplied by the daily lake surface area in acres to obtain the evaporation in Acre-feet. The lake surface area is determined by the 8:00 a.m. elevation reading applied to the lake's area-capacity data. The area-capacity data is updated periodically through a sediment survey. The last survey was completed in December 2000.

November 1 through March 31

During the winter season, a monthly total evaporation in inches has been determined. The amount varies with the percent of ice cover. The values used are:

HARLAN COUNTY LAKE

Estimated Evaporation in Inches
Winter Season -- Monthly Total

PERCENTAGE OF ICE COVER

	0%	10%	20%	30%	40%	50%	60%	70%	80%	90%	100%
JAN	0.88	0.87	0.85	0.84	0.83	0.82	0.81	0.80	0.78	0.77	0.76
FEB	0.90	0.88	0.87	0.86	0.85	0.84	0.83	0.82	0.81	0.80	0.79
MAR	1.29	1.28	1.27	1.26	1.25	1.24	1.23	1.22	1.21	1.20	1.19
OCT	4.87			NO IC							
NOV	2.81			NO IC							
DEC	1.31	1.29	1.27	1.25	1.24	1.22	1.20	1.18	1.17	1.16	1.14

The monthly total is divided by the number of days in the month to obtain a daily evaporation value in inches. It is divided by 12 and multiplied by the daily lake surface area in acres to obtain the evaporation in Acre-feet. The lake surface area is determined by the 8:00 a.m. elevation reading applied to the lake's area-capacity data. The area-capacity data is updated periodically through a sediment survey. The last survey was completed in December 2000.

To obtain the net evaporation, the monthly precipitation on the lake is subtracted from the monthly gross evaporation. The monthly precipitation is calculated by multiplying the sum of the month's daily precipitation in inches by the average of the end of the month lake surface area for the previous month and the end of the month lake surface area for the current month in acres and dividing the result by 12 to obtain the precipitation for the month in acre feet.

Kansas supplemental accounts established within Harlan County Lake, as defined in the 2016 CCY HCL Operations Resolution, will be charged annual net evaporation in an amount proportional to the relative contents of the supplemental account compared to the total irrigation supply.

The remaining annual net evaporation (Acre-feet) will be charged to Kansas and Nebraska in proportion to the annual diversions made by the Kansas Bostwick Irrigation District and the Nebraska Bostwick Irrigation District during the time period each year when irrigation releases are being made from Harlan County Lake. For any year in which no irrigation releases were made from Harlan County Lake, the annual net evaporation charged to Kansas and Nebraska will be based on the average of the above calculation for the most recent three years in which irrigation releases from Harlan

County Lake were made. In the event Nebraska chooses to substitute supply for the Superior Canal from Nebraska's allocation below Guide Rock in Water-Short Year Administration years, the amount of the substitute supply will be included in the calculation of the split as if it had been diverted to the Superior Canal at Guide Rock.

- (2) Evaporation Computations for Bureau of Reclamation Reservoirs
The Bureau of Reclamation computes the amount of evaporation loss on a monthly basis at Reclamation reservoirs. The following procedure is utilized in calculating the loss in Acre-feet.

An evaporation pan reading is taken each day at the dam site. This measurement is the amount of water lost from the pan over a 24-hour period in inches. The evaporation pan reading is adjusted for any precipitation recorded during the 24-hour period. Instructions for determining the daily pan evaporation are found in the "National Weather Service Observing Handbook No. 2 – Substation Observations." All dams located in the Kansas River Basin with the exception of Bonny Dam are National Weather Service Cooperative Observers. The daily evaporation pan readings are totaled at the end of each month and converted to a "free water surface" (FWS) evaporation, also referred to as "lake" evaporation. The FWS evaporation is determined by multiplying the observed pan evaporation by a coefficient of .70 at each of the reservoirs. This coefficient can be affected by several factors including water and air temperatures. The National Oceanic and Atmospheric Administration (NOAA) has published technical reports describing the determination of pan coefficients. The coefficient used is taken from the "NOAA Technical Report NWS 33, Map of coefficients to convert class A pan evaporation to free water surface evaporation". This coefficient is used for the months of April through October when evaporation pan readings are recorded at the dams. The monthly FWS evaporation is then multiplied by the average surface area of the reservoir during the month in acres. Dividing this value by twelve will result in the amount of water lost to evaporation in Acre-feet during the month.

During the winter months when the evaporation pan readings are not taken, monthly evaporation tables based on the percent of ice cover are used. The tables used were developed by the Corps of Engineers and were based on historical average evaporation rates. A separate table was developed for each of the reservoirs. The

monthly evaporation rates are multiplied by the .70 coefficient for pan to free water surface adjustment, divided by twelve to convert inches to feet and multiplied by the average reservoir surface area during the month in acres to obtain the total monthly evaporation loss in Acre- feet.

To obtain the net evaporation, the monthly precipitation on the lake is subtracted from the monthly gross evaporation. The monthly precipitation is calculated by multiplying the sum of the month's daily precipitation in inches by the average of the end of the month lake surface area for the previous month and the end of the month lake surface area for the current month in acres and dividing the result by 12 to obtain the precipitation for the month in acre feet.

f) Non-Federal Reservoir Evaporation:

For Non-Federal Reservoirs with a storage capacity less than 200 Acre-feet, the presumptive average annual surface area is 25% of the area at the principal spillway elevation. Net evaporation for each such Non-Federal Reservoir will be calculated by multiplying the presumptive average annual surface area by the net evaporation from the nearest climate and evaporation station to the Non-Federal Reservoir. A State may provide actual data in lieu of the presumptive criteria.

Net evaporation from Non-Federal Reservoirs with 200 Acre-feet of storage or greater will be calculated by multiplying the average annual surface area (obtained from the area-capacity survey) and the net evaporation from the nearest evaporation and climate station to the reservoir. If the average annual surface area is not available, the Non-Federal Reservoirs with 200 Acre-feet of storage or greater will be presumed to be full at the principal spillway elevation.

B. Specific Formulas for Each Sub-basin and the Main Stem

All calculations shall be based on the calendar year and shall be rounded to the nearest 10 Acre-feet using the conventional rounding formula of rounding up for all numbers equal to five or higher and otherwise rounding down.

Abbreviations:

- APV = Augmentation Pumping Volume
- CBCU = Computed Beneficial Consumptive
- Use CWS = Computed Water Supply

CWSA	= Computed Water Supply Adjustment
D	= Non-Federal Canal Diversions for Irrigation
Ev	= Evaporation from Federal Reservoirs
EvNFR	= Evaporation from Non-Federal Reservoirs
FF	= Flood Flow
GW	= Groundwater Computed Beneficial Consumptive Use (includes irrigation and non-irrigation uses)
IWS	= Imported Water Supply Credit from Nebraska
M&I	= Non-Irrigation Surface Water Diversions (Municipal and Industrial)
P	= Small Individual Surface Water Pump Diversions for Irrigation
RF	= Return Flow
VWS	= Virgin Water Supply
c	= Colorado
k	= Kansas
n	= Nebraska
ΔS	= Change in Federal Reservoir Storage
%	= Average system efficiency for individual pumps in the Sub-basin
% BRF	= Percent of Diversion from Bureau Canals that returns to the stream
###	= Value expected to be zero

1. North Fork of Republican River in Colorado³

$$\text{CBCU Colorado} = 0.6 \times \text{Haigler Canal Diversion Colorado} + 0.6 \times D_c + \% \times P_c + 0.5 \times M\&I_c + EvNFR_c + GW_c$$

$$\text{CBCU Kansas} = GW_k$$

$$\text{CBCU Nebraska} = 0.6 \times \text{Haigler Canal Diversion Nebraska} + GW_n$$

Note: The diversion for Haigler Canal is split between Colorado and Nebraska based on the percentage of land irrigated in each state

$$\text{VWS} = \text{North Fork of the Republican River at the State Line, Stn. No. 06823000} + \text{CBCU}_c + \text{CBCU}_k + \text{CBCU}_n + \text{Nebraska Haigler Canal RF} - \text{IWS} - \text{APV}$$

Note: The Nebraska Haigler Canal RF returns to the Main Stem.

³ The RRCA will investigate whether return flows from the Haigler Canal diversion in Colorado may return to the Arikaree River, not the North Fork of the Republican River, as indicated in the formulas. If there are return flows from the Haigler Canal to the Arikaree River, these formulas will be changed to recognize those returns.

$$\text{CWS} = \text{VWS} - \text{FF}$$

$$\text{Allocation Colorado} = 0.224 \times \text{CWS}$$

$$\text{Allocation Nebraska} = 0.246 \times \text{CWS}$$

$$\text{Unallocated} = 0.53 \times \text{CWS}$$

2. Arikaree River³

$$\text{CBCU Colorado} = 0.6 \times \text{Dc} + \% \times \text{Pc} + 0.5 \times \text{M\&Ic} + \text{EvNFRc} + \text{GWc}$$

$$\text{CBCU Kansas} = 0.6 \times \text{Dk} + \% \times \text{Pk} + 0.5 \times \text{M\&Ik} + \text{EvNFRk} + \text{GWk}$$

$$\text{CBCU Nebraska} = 0.6 \times \text{Dn} + \% \times \text{Pn} + 0.5 \times \text{M\&In} + \text{EvNFRn} + \text{GWn}$$

$$\text{VWS} = \text{Arikaree Gage at Haigler Stn. No. 06821500} + \text{CBCUc} + \text{CBCUk} + \text{CBCUn} - \text{IWS}$$

$$\text{CWS} = \text{VWS} - \text{FF}$$

$$\text{Allocation Colorado} = 0.785 \times \text{CWS}$$

$$\text{Allocation Kansas} = 0.051 \times \text{CWS}$$

$$\text{Allocation Nebraska} = 0.168 \times \text{CWS}$$

$$\text{Unallocated} = -0.004 \times \text{CWS}$$

3. Buffalo Creek

$$\text{CBCU Colorado} = 0.6 \times \text{Dc} + \% \times \text{Pc} + 0.5 \times \text{M\&In} + \text{EvNFRc} + \text{GWc}$$

$$\text{CBCU Kansas} = \text{GWk}$$

$$\text{CBCU Nebraska} = 0.6 \times \text{Dn} + \% \times \text{Pn} + 0.5 \times \text{M\&In} + \text{EvNFRn} + \text{GWn}$$

$$\text{VWS} = \text{Buffalo Creek near Haigler Gage Stn. No. 06823500} + \text{CBCUc} + \text{CBCUk} + \text{CBCUn} - \text{IWS}$$

$$\text{CWS} = \text{VWS} - \text{FF}$$

$$\text{Allocation Nebraska} = 0.330 \times \text{CWS}$$

$$\text{Unallocated} = 0.670 \times \text{CWS}$$

4. Rock Creek

$$\text{CBCU Colorado} = \text{GWc}$$

$$\text{CBCU Kansas} = \text{GWk}$$

$$\text{CBCU Nebraska} = 0.6 \times \text{Dn} + \% \times \text{Pn} + 0.5 \times \text{M\&In} + \text{EvNFRn} + \text{GWn}$$

$$\text{VWS} = \text{Rock Creek at Parks Gage Stn. No. 06824000} + \text{CBCUc} + \text{CBCUk} + \text{CBCUn} - \text{IWS} - \text{APV}$$

$$\text{CWS} = \text{VWS} - \text{FF}$$

$$\text{Allocation Nebraska} = 0.400 \times \text{CWS}$$

$$\text{Unallocated} = 0.600 \times \text{CWS}$$

5. South Fork Republican River

$$\text{CBCU Colorado} = 0.6 \times \text{Hale Ditch Diversion} + 0.6 \times \text{Dc} + \% \times \text{Pc} + 0.5 \times \text{M\&Ic} + \text{EvNFRc} + \text{Bonny Reservoir Ev} + \text{GWc}$$

$$\text{CBCU Kansas} = 0.6 \times \text{Dk} + \% \times \text{Pk} + 0.5 \times \text{M\&Ik} + \text{EvNFRk} + \text{GWk}$$

$$\text{CBCU Nebraska} = 0.6 \times \text{Dn} + \% \times \text{Pn} + 0.5 \times \text{M\&In} + \text{EvNFRn} + \text{GWn}$$

$$\text{VWS} = \text{South Fork Republican River near Benkelman Gage Stn. No. 06827500} + \text{CBCUc} + \text{CBCUk} + \text{CBCUn} + \Delta \text{S Bonny Reservoir} - \text{IWS}$$

$$\text{CWS} = \text{VWS} - \Delta \text{S Bonny Reservoir} - \text{FF}$$

$$\text{Allocation Colorado} = 0.444 \times \text{CWS}$$

$$\text{Allocation Kansas} = 0.402 \times \text{CWS}$$

$$\text{Allocation Nebraska} = 0.014 \times \text{CWS}$$

Unallocated = 0.140 x CWS

6. Frenchman Creek in Nebraska

CBCU Colorado = GWc

CBCU Kansas = GWk

CBCU Nebraska = Culbertson Canal Diversions (IRR Season) x (1-%BRF)
 + Culbertson Canal Diversions (Non-IRR Season) x (1-92%) + Culbertson Extension (IRR Season) x (1-%BRF)
 + Culbertson Extension (Non-IRR Season) x (1-92%)
 + 0.6 x Champion Canal Diversion + 0.6 x Riverside Canal Diversion + 0.6 x Dn + % x Pn + 0.5 x M&In + EvNFRn
 + Enders Reservoir Ev + GWn

VWS = Frenchman Creek in Culbertson, Nebraska Gage Stn. No. 06835500 + CBCUc + CBCUk + CBCUn
 + 0.17 x Culbertson Diversion RF + Culbertson Extension RF
 + 0.78 x Riverside Diversion RF + ΔS Enders Reservoir – IWS

Note: 17% of the Culbertson Diversion RF and 100% of the Culbertson Extension RF return to the Main Stem

CWS = VWS - ΔS Enders Reservoir – FF

Allocation Nebraska = 0.536 x CWS

Unallocated = 0.464 x CWS

7. Driftwood Creek

CBCU Colorado = GWc

CBCU Kansas = 0.6 x Dk + % x Pk + 0.5 x M&Ik + EvNFRk + GWk

CBCU Nebraska = 0.6 x Dn + % x Pn + 0.5 x M&In + EvNFRn + GWn

VWS = Driftwood Creek near McCook Gage Stn. No. 06836500
 + CBCUc + CBCUk + CBCUn
 – 0.24 x Meeker Driftwood Canal RF - IWS

Note: 24 % of the Meeker Driftwood Canal RF returns to Driftwood Creek

$$\begin{aligned} \text{CWS} &= \text{VWS} - \text{FF} \\ \text{Allocation Kansas} &= 0.069 \times \text{CWS} \\ \text{Allocation Nebraska} &= 0.164 \times \text{CWS} \\ \text{Unallocated} &= 0.767 \times \text{CWS} \end{aligned}$$

8. Red Willow Creek in Nebraska

$$\begin{aligned} \text{CBCU Colorado} &= \text{GWc} \\ \text{CBCU Kansas} &= \text{GWk} \\ \text{CBCU Nebraska} &= 0.1 \times \text{Red Willow Canal CBCU} + 0.6 \times \text{Dn} + \% \times \text{Pn} \\ &\quad + 0.5 \times \text{M\&In} + \text{EvNFRn} + 0.1 \times \text{Hugh Butler Lake Ev} \\ &\quad + \text{GWn} \end{aligned}$$

Note:
 Red Willow Canal CBCU = Red Willow Canal Diversion (IRR Season) x (1- % BRF) + Red Willow Canal Diversion (Non-IRR Season) x (1-92%)

90% of the Red Willow Canal CBCU and 90% of Hugh Butler Lake Ev charged to Nebraska's CBCU in the Main Stem

$$\begin{aligned} \text{VWS} &= \text{Red Willow Creek near Red Willow Gage Stn. No.} \\ &\quad 06838000 + \text{CBCUc} + \text{CBCUk} + \text{CBCUn} + 0.9 \times \text{Red Willow Canal CBCU} \\ &\quad + 0.9 \times \text{Hugh Butler Lake Ev} + 0.9 \times \text{Red Willow Canal RF} + \Delta \text{S Hugh Butler Lake} - \text{IWS} \end{aligned}$$

Note: 90% of the Red Willow Canal RF returns to the Main Stem

$$\begin{aligned} \text{CWS} &= \text{VWS} - \Delta \text{S Hugh Butler Lake} - \text{FF} \\ \text{Allocation Nebraska} &= 0.192 \times \text{CWS} \end{aligned}$$

Unallocated = 0.808 x CWS

9. Medicine Creek

CBCU Colorado = GWc

CBCU Kansas = GWk

CBCU Nebraska = 0.6 x Dn above and below gage + % x Pn above and below gage + 0.5 x M&In above and below gage + EvNFRn above and below gage + GWn

Notes: Harry Strunk Lake Ev charged to Nebraska's CBCU in the Main Stem.

CU from Harry Strunk releases in the Cambridge Canal is charged to the Main stem (no adjustment to the VWS formula is needed as this water shows up in the Medicine Creek gage).

VWS = Medicine Creek below Harry Strunk Lake Gage Stn. No. 06842500 + CBCUc + CBCUk + CBCUn - 0.6 x Dn below gage - % x Pn below gage - 0.5 * M&In below gage - EvNFRn below gage + Harry Strunk Lake Ev + ΔS Harry Strunk Lake - IWS - APV

Note: The CBCU surface water terms for Nebraska which occur below the gage are added in the VWS for the Main Stem

CWS = VWS - ΔS Harry Strunk Lake - FF

Allocation Nebraska = 0.091 x CWS

Unallocated = 0.909 x CWS

10. Beaver Creek

CBCU Colorado = 0.6 x Dc + % x Pc + 0.5 x M&Ic + EvNFRc + GWc

CBCU Kansas = 0.6 x Dk + % x Pk + 0.5 x M&Ik + EvNFRk + GWk

CBCU Nebraska = $0.6 \times Dn$ above and below gage + $\% \times Pn$ above and below gage + $0.5 \times M\&In$ above and below gage + $EvNFRn$ above and below gage + GWn

VWS = Beaver Creek near Beaver City gage Stn. No. 06847000 + $BCUc$ + $CBCUk$ + $CBCUn$ – $0.6 \times Dn$ below gage - $\% \times Pn$ below gage – $0.5 * M\&In$ below gage - $EvNFRn$ below gage – IWS

Note: The CBCU surface water terms for Nebraska which occur below the gage are added in the VWS for the Main Stem

CWS = VWS – FF

Allocation Colorado = $0.200 \times CWS$

Allocation Kansas = $0.388 \times CWS$

Allocation Nebraska = $0.406 \times CWS$

Unallocated = $0.006 \times CWS$

11. Sappa Creek

CBCU Colorado = GWc

CBCU Kansas = $0.6 \times Dk$ + $\% \times Pk$ + $0.5 \times M\&Ik$ + $EvNFRk$ + GWk

CBCU Nebraska = $0.6 \times Dn$ above and below gage + $\% \times Pn$ above and below gage + $0.5 \times M\&In$ above and below gage + $EvNFRn$ above and below gage + GWn

VWS = Sappa Creek near Stamford gage Stn. No. 06847500 – Beaver Creek near Beaver City gage Stn. No. 06847000 + $BCUc$ + $CBCUk$ + $CBCUn$ – $0.6 \times Dn$ below gage - $\% \times Pn$ below gage – $0.5 * M\&In$ below gage - $EvNFRn$ below gage - IWS

Note: The CBCU surface water terms for Nebraska which occur below the gage are added in the VWS for the Main Stem.

CWS = VWS - FF

Allocation Kansas = 0.411 x CWS

Allocation Nebraska = 0.411 x CWS

Unallocated = 0.178 x CWS

12. Prairie Dog Creek

CBCU Colorado = GWc

CBCU Kansas = Almena Canal Diversion x (1-%BRF) + 0.6 x Dk + % x Pk
+ 0.5 x M&Ik + EvNFRk + Keith Sebelius Lake Ev + GWk

CBCU Nebraska = 0.6 x Dn below gage + % x Pn below gage + 0.5 x
M&In below gage + EvNFRn + GWn below gage

VWS = Prairie Dog Creek near Woodruff, Kansas USGS Stn. No.
06848500 + CBCUc + CBCUk + CBCUn - 0.6 x Dn below
gage - % x Pn below gage - 0.5 x M&In below gage -
EvNFRn below gage + ΔS Keith Sebelius Lake - IWS

Note: The CBCU surface water terms for Nebraska which occur below the gage are added in the VWS for the Main Stem

CWS = VWS - ΔS Keith Sebelius Lake - FF

Allocation Kansas = 0.457 x CSW

Allocation Nebraska = 0.076 x CWS

Unallocated = 0.467 x CWS

13. The North Fork of the Republican River in Nebraska and the Main Stem of the Republican River between the junction of the North Fork and the Arikaree River and the Republican River near Hardy

CBCU Colorado = GWc

CBCU Kansas =
(Deliveries from the Courtland Canal to Kansas above

Lovewell) x (1-%BRF)
 + Amount of transportation loss of Courtland Canal deliveries to Lovewell that does not return to the river, charged to Kansas
 + (Diversion of Republican River water from Lovewell Reservoir by the Courtland Canal below Lovewell) x (1-%BRF)
 + 0.6 x Dk
 + % x Pk
 + 0.5 x M&Ik
 + EvNFRk
 + Harlan County Lake Ev charged to Kansas
 + Lovewell Reservoir Ev charged to the Republican River
 + GWk

CBCU Nebraska

=
 Deliveries from Courtland Canal to Nebraska lands x (1-%BRF)
 + Superior Canal (IRR Season) x (1- %BRF) + Superior Canal (Non-IRR Season) x (1 - 92%)
 + Franklin Pump Canal (IRR Season) x (1- %BRF) + Franklin Pump Canal (Non-IRR Season) x (1 - 92 %)
 + Franklin Canal (IRR Season) x (1- %BRF) + Franklin Canal (Non-IRR Season) x (1 - 92%)
 + Naponee Canal (IRR Season) x (1- %BRF) + Naponee Canal (Non-IRR Season) x (1 - 92%)
 + Cambridge Canal (IRR Season) x (1- %BRF) + Cambridge Canal (Non-IRR Season) x (1 - 92%)
 + Bartley Canal (IRR Season) x (1- %BRF) + Bartley Canal (Non-IRR Season) x (1 - 92%)
 + Meeker-Driftwood Canal (IRR Season) x (1- %BRF) + Meeker-Driftwood Canal (Non-IRR Season) x (1- 92%)
 + 0.9 x Red Willow Canal CBCU
 + 0.6 x Dn
 + % x Pn
 + 0.5 x M&In
 + EvNFRn
 + 0.9 x Hugh Butler Lake Ev
 + Harry Strunk Lake Ev
 + Swanson Lake Ev
 + Harlan County Lake Ev charged to Nebraska
 + GWn

Notes:

The allocation of transportation losses in the Courtland Canal above Lovewell between Kansas and Nebraska shall be done by the Bureau of Reclamation and reported in their “Courtland Canal Above Lovewell” spreadsheet. Deliveries and losses associated with deliveries to both Nebraska and Kansas above Lovewell shall be reflected in the Bureau’s Monthly Water District reports. Losses associated with delivering water to Lovewell shall be separately computed.

Amount of transportation loss of the Courtland Canal deliveries to Lovewell that does not return to the river, charged to Kansas shall be 18% of the Bureau’s estimate of losses associated with these deliveries.

Red Willow Canal CBCU = Red Willow Canal Diversion x (IRR Season) x (1 - % BRF) + Red Willow Canal Diversion (Non-IRR Season) x (1 - 92%)

10% of the Red Willow Canal CBCU is charged to Nebraska’s CBCU in Red Willow Creek sub-basin

10% of Hugh Butler Lake Ev is charged to Nebraska’s CBCU in the Red Willow Creek sub-basin

None of the Harry Strunk Lake EV is charged to Nebraska’s CBCU in the Medicine Creek sub-basin

VWS

=

- Republican River near Hardy Gage Stn. No. 06853500
- North Fork of the Republican River at the State Line, Stn. No. 06823000
- Arikaree Gage at Haigler Stn. No. 06821500
- Buffalo Creek near Haigler Gage Stn. No. 06823500
- Rock Creek at Parks Gage Stn. No. 06824000
- South Fork Republican River near Benkelman Gage Stn. No. 06827500
- Frenchman Creek in Culbertson Stn. No. 06835500
- Driftwood Creek near McCook Gage Stn. No. 06836500
- Red Willow Creek near Red Willow Gage Stn. No. 06838000
- Medicine Creek below Harry Strunk Lake Gage Stn. No. 06842500
- Sappa Creek near Stamford Gage Stn. No. 06847500
- Prairie Dog Creek near Woodruff, Kansas Stn. No.

068485000

+ CBCUc

+ CBCUn

+ 0.6 x Dk

+ % x Pk

+ 0.5 x M&Ik

+ EvNFRk

+ Harlan County Lake Ev charged to Kansas

+ Amount of transportation loss of the Courtland Canal
above the Stateline that does not return to the river, charged
to Kansas+ **GWk**

- 0.9 x Red Willow Canal CBCU

- 0.9 x Hugh Butler Ev

- Harry Strunk Ev

+ 0.6 x Dn below Medicine Creek gage

+ % x Pn below Medicine Creek gage

+ 0.5 * M&In below Medicine Creek gage

+ EvNFRn below Medicine Creek gage

+ 0.6 x Dn below Beaver Creek gage

+ % x Pn below Beaver Creek gage

+ 0.5 * M&In below Beaver Creek gage

+ EvNFRn below Beaver Creek gage

+ 0.6 x Dn below Sappa Creek gage

+ % x Pn below Sappa Creek gage

+ 0.5 * M&In below Sappa Creek gage

+ EvNFRn below Sappa Creek gage

+ 0.6 x Dn below Prairie Dog Creek gage

+ % x Pn below Prairie Dog Creek gage

+ 0.5 * M&In below Prairie Dog Creek gage

+ EvNFRn below Prairie Dog Creek gage

+ Change in Storage Harlan County Lake

+ Change in Storage Swanson Lake

- Nebraska Haigler Canal RF

- 0.78 x Riverside Canal RF

- 0.17 x Culbertson Canal RF
- Culbertson Canal Extension RF to Main Stem
- + 0.24 x Meeker Driftwood Canal RF which returns to Driftwood Creek
- 0.9 x Red Willow Canal RF

- + Courtland Canal at Kansas-Nebraska State Line Gage Stn No. 06852500
- Courtland Canal RF in Kansas above Lovewell Reservoir

- IWS

Notes:

None of the Nebraska Haigler Canal RF returns to the North Fork of the Republican River

83% of the Culbertson Diversion RF and none of the Culbertson Extension RF return to Frenchman Creek

24 % of the Meeker Driftwood Canal RF returns to Driftwood Creek.

10% of the Red Willow Canal RF returns to Red Willow Creek

Courtland Canal RF in Kansas above Lovewell Reservoir = 0.015 x (Courtland Canal at Kansas-Nebraska State Line Gage Stn No. 06852500)

CWS = VWS - Change in Storage Harlan County Lake - Change in Storage Swanson Lake – FF + CWSA

Allocation Kansas = 0.511 x CWS

Allocation Nebraska = 0.489 x CWS

V. Annual Data/ Information Requirements, Reporting, and Verification

The following information for the previous calendar year shall be provided to the members of the RRCA Engineering Committee by April 15th of each year, unless otherwise specified.

All information shall be provided in electronic format, if available.

Each State agrees to provide all information from their respective State that is needed for the RRCA Groundwater Model and RRCA Accounting Procedures and Reporting Requirements, including but not limited to the following:

A. Annual Reporting

1. Surface water diversions and irrigated acreage:

Each State will tabulate the canal, ditch, and other surface water diversions that are required by RRCA annual compact accounting and the RRCA Groundwater Model on a monthly format (or a procedure to distribute annual data to a monthly basis) and will forward the surface water diversions to the other States. This will include available diversion, wasteway, and farm delivery data for canals diverting from the Platte River that contribute to Imported Water Supply into the Basin. Each State will provide the water right number, type of use, system type, location, diversion amount, and acres irrigated.

2. Groundwater pumping and irrigated acreage:

Each State will tabulate and provide all groundwater well pumping estimates that are required for the RRCA Groundwater Model to the other States.

Colorado – will provide an estimate of pumping based on a county format that is based upon system type, Crop Irrigation Requirement (CIR), irrigated acreage, crop distribution, and irrigation efficiencies. Colorado will require installation of a totalizing flow meter, installation of an hours meter with a measurement of the pumping rate, or determination of a power conversion coefficient for 10% of the active wells in the Basin by December 31, 2005. Colorado will also provide an annual tabulation for each groundwater well that measures groundwater pumping by a totalizing flow meter, hours meter or power conversion coefficient that includes: the groundwater well permit number, location, reported hours, use, and irrigated acreage.

Kansas - will provide an annual tabulation by each groundwater well that includes: water right number, groundwater pumping determined by a meter on each well (or group of wells in a manifold system) or by reported hours of use and rate; location; system type (gravity, sprinkler, LEPA, drip, etc.); and irrigated acreage. Crop distribution will be provided on a county basis.

Nebraska – will provide an annual tabulation through the representative Natural Resource District (NRD) in Nebraska that includes: the well registration number or other ID number; groundwater pumping determined

by a meter on each well (or group of wells in a manifold system) or by reported hours of use and rate; wells will be identified by; location; system type (gravity, sprinkler, LEPA, drip, etc.); and irrigated acreage. Crop distribution will be provided on a county basis.

3. Climate information:

Each State will tabulate and provide precipitation, temperature, relative humidity or dew point, and solar radiation for the following climate stations:

State	Identification	Name
Colorado	C050109	Akron 4 E
Colorado	C051121	Burlington
Colorado	C054413	Julesburg
Colorado	C059243	Wray
Kansas	C140439	Atwood 2 SW
Kansas	C141699	Colby 1SW
Kansas	C143153	Goodland
Kansas	C143837	Hoxie
Kansas	C145856	Norton 9 SSE
Kansas	C145906	Oberlin1 E
Kansas	C147093	Saint Francis
Kansas	C148495	Wakeeny
Nebraska	C250640	Beaver City
Nebraska	C250810	Bertrand
Nebraska	C252065	Culbertson
Nebraska	C252690	Elwood 8 S
Nebraska	C253365	Gothenburg
Nebraska	C253735	Hebron
Nebraska	C253910	Holdredge
Nebraska	C254110	Imperial
Nebraska	C255090	Madrid
Nebraska	C255310	McCook
Nebraska	C255565	Minden
Nebraska	C256480	Palisade
Nebraska	C256585	Paxton
Nebraska	C257070	Red Cloud
Nebraska	C258255	Stratton
Nebraska	C258320	Superior
Nebraska	C258735	Upland
Nebraska	C259020	Wauneta 3 NW

4. Crop Irrigation Requirements:

Each State will tabulate and provide estimates of crop irrigation requirement

information on a county format. Each State will provide the percentage of the crop irrigation requirement met by pumping; the percentage of groundwater irrigated lands served by sprinkler or flood irrigation systems, the crop irrigation requirement; crop distribution; crop coefficients; gain in soil moisture from winter and spring precipitation, net crop irrigation requirement; and/or other information necessary to compute a soil/water balance.

5. Streamflow Records from State-Maintained Gaging Records:

Streamflow gaging records from the following State maintained gages will be provided:

Station No	Name
00126700	Republican River near Trenton
06831500	Frenchman Creek near Imperial
06832500	Frenchman Creek near Enders
06835000	Stinking Water Creek near Palisade
06837300	Red Willow Creek above Hugh Butler Lake
06837500	Red Willow Creek near McCook
06841000	Medicine Creek above Harry Strunk Lake
06842500	Medicine Creek below Harry Strunk Lake
06844000	Muddy Creek at Arapahoe
06844210	Turkey Creek at Edison
06847000	Beaver Creek near Beaver City
	Republican River at Riverton
06851500	Thompson Creek at Riverton
06852000	Elm Creek at Amboy
	Republican River at the Superior-Courtland Diversion Dam

6. Platte River Reservoirs:

The State of Nebraska will provide the end-of-month contents, inflow data, outflow data, area-capacity data, and monthly net evaporation, if available, from Johnson Lake; Elwood Reservoir; Sutherland Reservoir; Maloney Reservoir; and Jeffrey Lake.

7. Water Administration Notification:

The State of Nebraska will provide the following information that describes the protection of reservoir releases from Harlan County Lake and for the administration of water rights junior in priority to February 26, 1948:

Date of notification to Nebraska water right owners to curtail their diversions, the amount of curtailment, and length of time for curtailment.

The number of notices sent.

The number of diversions curtailed and amount of curtailment in the Harlan County Lake to Guide Rock reach of the Republican River.

8. Moratorium:

Each State will provide a description of all new Wells constructed in the Basin Upstream of Guide Rock including the owner, location (legal description), depth and diameter or dimension of the constructed water well, casing and screen information, static water level, yield of the water well in gallons per minute or gallons per hour, and intended use of the water well.

Designation whether the Well is a:

- a. Test hole;
- b. Dewatering Well with an intended use of one year or less;
- c. Well designed and constructed to pump fifty gallons per minute or less;
- d. Replacement Water Well, including a description of the Well that is replaced providing the information described above for new Wells and a description of the historic use of the Well that is replaced;
- e. Well necessary to alleviate an emergency situation involving provision of water for human consumption, including a brief description of the nature of the emergency situation and the amount of water intended to be pumped by and the length of time of operation of the new Well;
- f. Transfer Well, including a description of the Well that is transferred providing the information described above for new Wells and a description of the Historic Consumptive Use of the Well that is transferred;
- g. Well for municipal and/or industrial expansion of use;

Wells in the Basin in Northwest Kansas or Colorado. Kansas and Colorado will provide the information described above for new Wells along with copies of any other information that is required to be filed with either State of local agencies under the laws, statutes, rules and regulations in existence as of April 30, 2002, and; Any changes in State law in the previous year relating to existing Moratorium.

9. Non-Federal Reservoirs:

Each State will conduct an inventory of Non Federal Reservoirs by December 31, 2004, for inclusion in the annual Compact Accounting. The inventory shall include the following information: the location, capacity (in Acre-feet) and area (in acres) at the principal spillway elevation of each Non-Federal Reservoir. The States will annually provide any updates to the initial inventory of Non-Federal Reservoirs, including enlargements that are constructed in the previous year.

Owners/operators of Non-Federal Reservoirs with 200 Acre-feet of storage capacity or greater at the principal spillway elevation will be required to provide an area- capacity survey from State-approved plans or prepared by a licensed professional engineer or land surveyor.

10. Augmentation Projects:

Each State will provide a description of the wells, measuring devices, conveyance structure(s), and other infrastructure to describe the physical characteristics, water diversions, and consumptive use associated with each project. The States will provide daily pumping data for each augmentation project on an annual basis.

B. RRCA Groundwater Model Data Input Files

1. Monthly groundwater pumping, surface water recharge, groundwater recharge, and precipitation recharge provided by county and indexed to the one square mile cell size.
2. Potential Evapotranspiration rate is set as a uniform rate for all phreatophyte vegetative classes – the amount is X at Y climate stations and is interpolated spatially using kriging.

C. Inputs to RRCA Accounting**1. Surface Water Information**

- a. Streamflow gaging station records: obtained as preliminary USGS or Nebraska streamflow records, with adjustments to reflect a calendar year, at the following locations:

Arikaree River at Haigler, Nebraska
North Fork Republican River at Colorado-Nebraska state line

Buffalo Creek near Haigler, Nebraska
Rock Creek at Parks, Nebraska
South Fork Republican River near Benkelman, Nebraska
Frenchman Creek at Culbertson, Nebraska
Red Willow Creek near Red Willow, Nebraska
Medicine Creek below Harry Strunk Lake, Nebraska*
Beaver Creek near Beaver City, Nebraska*
Sappa Creek near Stamford, Nebraska
Prairie Dog Creek near Woodruff, Kansas
Courtland Canal at Nebraska-Kansas state line
Republican River near Hardy, Nebraska
Republican River at Superior-Courtland Diversion Dam near
Guide Rock,
Nebraska (new)*

- b. Federal reservoir information: obtained from the United States Bureau of Reclamation:

Daily free water surface evaporation, storage, precipitation, reservoir release information, and updated area-capacity tables.

Federal Reservoirs:

Bonny Reservoir
Swanson Lake
Harry Strunk Lake
Hugh Butler Lake
Enders Reservoir
Keith Sebelius Lake
Harlan County
Lake Lovewell
Reservoir

- c. Non-federal reservoirs obtained by each state: an updated inventory of reservoirs that includes the location, surface area (acres), and capacity (in Acre-feet), of each non-federal reservoir with storage capacity of fifteen (15) Acre-feet or greater at the principal spillway elevation. Supporting data to substantiate the average surface water areas that are different than the presumptive average annual surface area may be tendered by the offering State.

- d. Diversions and related data from USBR

Irrigation diversions by canal, ditch, and pumping station that irrigate more than two (2) acres
Diversions for non-irrigation uses greater than 50 Acre-feet
Farm Deliveries
Wasteway measurements
Irrigated acres

- e. Diversions and related data – from each respective State

Irrigation diversions by canal, ditch, and pumping station that irrigate more than two (2) acres
Diversions for non-irrigation uses greater than 50 Acre-feet
Wasteway measurements, if available

2. Groundwater Information

(From the RRCA Groundwater model as output files as needed for the accounting procedures)

- a. Imported water - mound credits in amount and time that occur in defined streamflow points/reaches of measurement or compliance – ex: gaging stations near confluence or state lines
- b. Groundwater depletions to streamflow (above points of measurement or compliance – ex: gaging stations near confluence or state lines)

3. Summary

The aforementioned data will be aggregated by Sub-basin as needed for RRCA accounting.

D. Verification

1. Documentation to be Available for Inspection Upon Request

- a. Well permits/ registrations database
- b. Copies of well permits/ registrations issued in calendar year
- c. Copies of surface water right permits or decrees
- d. Change in water right/ transfer historic use analyses
- e. Canal, ditch, or other surface water diversion records
- f. Canal, ditch, or other surface water measurements
- g. Reservoir storage and release records
- h. Irrigated acreage
- i. Augmentation well pumping and delivery records

2. Site Inspection

- a. Accompanied – reasonable and mutually acceptable schedule among representative state and/or federal officials.
- b. Unaccompanied – inspection parties shall comply with all laws and regulations of the State in which the site inspection occurs.

Table 1: Annual Virgin and Computed Water Supply, Allocations and Computed Beneficial Consumptive Uses by State, Main Stem and Sub-basin

Designated Drainage Basin	Col. 1: Virgin Water Supply	Col. 2: Computed Water Supply	Col. 3: Allocations				Col. 4: Computed Beneficial Consumptive Use		
			Colorado	Nebraska	Kansas	Unallocated	Colorado	Nebraska	Kansas
North Fork in Colorado									
Arikaree									
Buffalo									
Rock									
South Fork of Republican River									
Frenchman									
Driftwood									
Red Willow									
Medicine									
Beaver									
Sappa									
Prairie Dog									
North Fork of Republican River in Nebraska and Main Stem									
Total All Basins									
North Fork Of Republican River in Nebraska and Mainstem Including Unallocated Water									
Total									

Table 2: Original Compact Virgin Water Supply and Allocations

Designated Drainage Basin	Virgin Water Supply	Colorado Allocation	% of Total Drainage Basin Supply	Kansas Allocation	% of Total Drainage Basin Supply	Nebraska Allocation	% of Total Drainage Basin Supply	Unallocated	% of Total Drainage Basin Supply
North Fork - CO	44,700	10,000	22.4			11,000	24.6	23,700	53.0
Arikaree River	19,610	15,400	78.5	1,000	5.1	3,300	16.8	-90	-0.4
Buffalo Creek	7,890					2,600	33.0	5,290	67.0
Rock Creek	11,000					4,400	40.0	6,600	60.0
South Fork	57,200	25,400	44.4	23,000	40.2	800	1.4	8,000	14.0
Frenchman Creek	98,500					52,800	53.6	45,700	46.4
Driftwood Creek	7,300			500	6.9	1,200	16.4	5,600	76.7
Red Willow Creek	21,900					4,200	19.2	17,700	80.8
Medicine Creek	50,800					4,600	9.1	46,200	90.9
Beaver Creek	16,500	3,300	20.0	6,400	38.8	6,700	40.6	100	0.6
Sappa Creek	21,400			8,800	41.1	8,800	41.1	3,800	17.8
Prairie Dog Creek	27,600			12,600	45.7	2,100	7.6	12,900	46.7
Sub-total Tributaries	384,400							175,500	
Main Stem + Blackwood Creek	94,500								
Main Stem + Unallocated	270,000			138,000	51.1	132,000	48.9		
Total	478,900	54,100		190,300		234,500			

Table 3A: Table to Be Used to Calculate Colorado's Five-Year Running Average Allocation and Computed Beneficial Consumptive Use for Determining Compact Compliance for Averaging Periods with No Water Short Year Designations Pursuant to Section III.J.

Colorado				
	Col. 1	Col. 2	Col. 3	Col. 4
Year	Allocation	Computed Beneficial Consumptive	Imported Water Supply Credit and CORWS Credit	Difference between Allocation and the Computed Beneficial Consumptive Use offset by Imported Water Supply Credit and CORWS Credit Col 1 – (Col 2- Col 3)
Year t= -4				
Year t= -3				
Year t= -2				
Year t= -1				
Current Year t= 0				
Average				

Table 3B. Table to Be Used to Calculate Kansas's Five-Year Running Average Allocation and Computed Beneficial Consumptive Use for Determining Compact Compliance

Kansas				
	Col. 1	Col. 2	Col. 3	Col. 4
Year	Allocation	Computed Beneficial Consumptive	Imported Water Supply Credit	Difference between Allocation and the Computed Beneficial Consumptive Use offset by Imported Water Supply Credit Col 1 – (Col 2- Col 3)
Year T= -4				
Year T= -3				
Year T= -2				
Year T= -1				
Current Year T= 0				
Average				

Table 3C. Table to Be Used to Calculate Nebraska's Five-Year Running Average Allocation and Computed Beneficial Consumptive Use for Determining Compact Compliance

Nebraska				
	Col. 1	Col. 2	Col. 3	Col. 4
Year	Allocation	Computed Beneficial Consumptive	Imported Water Supply Credit and NERWS Credit	Difference between Allocation and the Computed Beneficial Consumptive Use offset by Imported Water Supply Credit and NERWS Credit Col 1 – (Col 2- Col 3)
Year T= -4				
Year T= -3				
Year T= -2				
Year T= -1				
Current Year T= 0				
Average				

Table 4A: Colorado Compliance with the Sub-basin Non-impairment Requirement

Sub-basin	Col 1 Colorado Sub-basin Allocation (5-year running average)	Col 2 Unallocated Supply (5-year running average)	Col 3 Credits from Imported Water Supply and CORWS Credit (5-year running average)	Col 4 Total Supply Available (5-year running average)	Col 5 Colorado Computed Beneficial Consumptive Use (5-year running average)	Col 6 Difference Between Available Supply and Computed Beneficial Consumptive Use (5-year running average)
North Fork Republican River Colorado						
Arikaree River			N/A			
South Fork Republican River			N/A			
Beaver Creek			N/A			

Note: In Table 4A, the CORWS Credit in Col 3 can only be applied to the North Fork Republican River Colorado. Table 4A is left unpopulated pursuant to the 2016 Colorado CCP/SF Resolution, paragraph E.

Table 4B: Kansas Compliance with the Sub-basin Non-impairment Requirement

Sub-basin	Col 1 Kansas Sub-basin Allocation (5-year running average)	Col 2 Unallocated Supply (5-year running average)	Col 3 Unused Allocation from Colorado (5-year running average)	Col 4 Credits from Imported Water Supply (5-year running average)	Col 5 Total Supply Available = Col 1+ Col 2+ Col 3 + Col 4 (5-year running average)	Col 6 Kansas Computed Beneficial Consumptive Use (5-year running average)	Col 7 Difference Between Available Supply and Computed Beneficial Consumptive Use = Col 5 – Col 6 (5-year running average)
Arikaree River							
South Fork Republican River							
Driftwood Creek							
Beaver Creek							
Sappa Creek							
Prairie Dog Creek							

Table 5A: Table to Be Used to Calculate Colorado's Compact Compliance for Averaging Periods with Water Short Year Designations Pursuant to Section III.J.

Colorado							
	Col. 1	Col. 2	Col. 3	Col. 4	Col. 5	Col. 6	Col. 7
Year	Is the year Water Short Pursuant to III.J?*(Yes or No)	Statewide Allocation	Beaver Creek Reduction Pursuant to Table 5F	Allocation – Beaver Creek Reduction (Col. 2 – Col. 3)	Computed Beneficial Consumptive (excluding the Beaver Creek Sub-basin)	Imported Water Supply Credit – IWS Beaver Creek \pm <u>CORWS Credit</u>	Difference between Allocation and the Computed Beneficial Consumptive Use offset by Imported Water Supply Credit <u>and</u> <u>CORWS Credit</u> (Col. 4 – Col. 5 + Col. 6)
Year T= -4							
Year T= -3							
Year T= -2							
Year T= -1							
Current Year T= 0							
Average							

* If the Column 1 entry is “No”, then the Beaver Creek Reduction in Column 3 will be zero for that year.

Table 5B: Kansas Compliance During Water-Short Year Administration

Kansas							
Year	Allocation				Computed Beneficial Consumptive Use	Imported Water Supply Credit	Difference Between Allocation and the Computed Beneficial Consumptive Use offset by Imported Water Supply Credit
Column	1	2	3	4	5	6	7
	Sum Sub-basins	Kansas's Share of the Unallocated Supply	Kansas' Share of Unused Colorado Allocation	Total Col 1 + Col 2 + Col 3			Col 4 – (Col 5 – Col 6)
Previous Year							
Current Year							
Average							

Note: In Table 5B, Column 3 values are the sum of Kansas' Share of Unused Colorado Allocations for the sub-basins listed in Table 4B. Kansas' share of the Unused Colorado Allocation is 51.1%.

Table 5C: Nebraska Compliance During Water-Short Year Administration

	Nebraska								
Year	Allocation				Computed Beneficial Consumptive Use			Imported Water Supply Credit and NERWS Credit	Difference Between Allocation and the Computed Beneficial Consumptive Use offset by Imported Water Supply Credit Above Guide Rock and NERWS Credit
Column	Col 1	Col 2	Col 3	Col 4	Col 5	Col 6	Col 7	Col 8	Col 9
	State Wide Allocation	Allocation below Guide Rock	State Wide Allocation above Guide Rock	Nebraska's Share of Unused Colorado Allocation	State Wide CBCU	CBCU below Guide Rock	State Wide CBCU above Guide Rock	Credits above Guide Rock	Col 3 + Col 4 – (Col 7 – Col 8)
Previous Year									
Current Year									
Average									

Note: In Table 5C, Column 4 values are the sum of Nebraska's Share of Unused Colorado Allocations for the sub-basins listed in Table 4B and the North Fork Sub-basin. Nebraska's share of the Unused Colorado Allocation is 48.9%.

Table 5D: Nebraska Compliance Under an Alternative Water-Short Year Administration Plan

Year	Allocation				Computed Beneficial Consumptive Use			Imported Water Supply Credit and NERWS Credit	Difference Between Allocation and the Computed Beneficial Consumptive Use offset by Imported Water Supply Credit Above Guide Rock and NERWS Credit
Column	Col 1	Col 2	Col 3	Col 4	Col 5	Col 6	Col 7	Col 8	Col 9
	State Wide Allocation	Allocation below Guide Rock	State Wide Allocation above Guide Rock	Nebraska's Share of Unused Colorado Allocation	State Wide CBCU	CBCU below Guide Rock	State Wide CBCU above Guide Rock	Credits above Guide Rock	Col 3 + Col 4 – (Col 7 - Col 8)
Year = -2									
Year = -1									
Current Year									
Three-Year Average									
	Sum of Previous Two-year Difference								
	Expected Decrease in CBCU Under Plan								

Note: In Table 5D, Column 4 values are the sum of Nebraska's Share of Unused Colorado Allocations for the sub-basins listed in Table 4B and the North Fork Sub-basin. Nebraska's share of the Unused Colorado Allocation is 48.9%.

Table 5E: Nebraska Tributary Compliance During Water-Short Year Administration

Year	Sum of Nebraska Sub-basin Allocations	Sum of Nebraska's Share of Sub-basin Unallocated Supplies	Total Available Water Supply for Nebraska	Computed Beneficial Consumptive Use	Imported Water Supply Credit and NERWS Credit generated in a Sub-basin	Difference between Allocation And the Computed Beneficial Consumptive Use offset by Imported Water Supply Credit and NERWS Credit
	Col 1	Col 2	Col 3	Col 4	Col 5	Col 6
			Col 1 + Col 2			Col 3 -(Col 4-Col 5)
Previous Year						
Current Year						
Average						

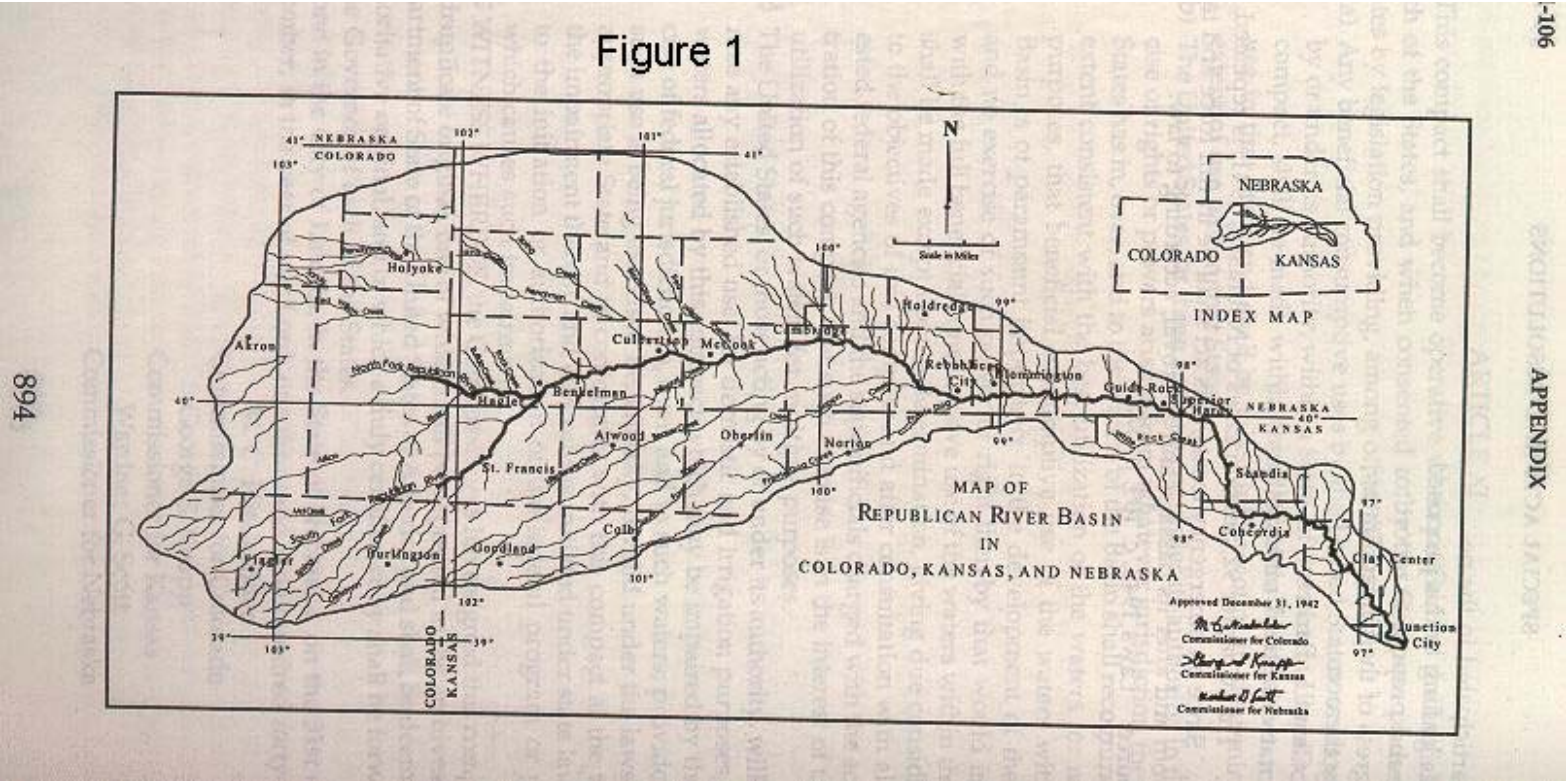
Table 5F: Colorado's Beaver Creek Reduction During Water-Short Years

Colorado		
Water Short Year (WSY) Pursuant to III.J	Beaver Creek Allocation	Current Accounting Year Reduction = Average of last 5 WSY Beaver Creek Allocations
	Col. 1	Col. 2
Fifth Most Recent WSY		
Fourth Most Recent WSY		
Third Most Recent WSY		
Second Most Recent WSY		
Most Recent* WSY		
		Average of Col. 1

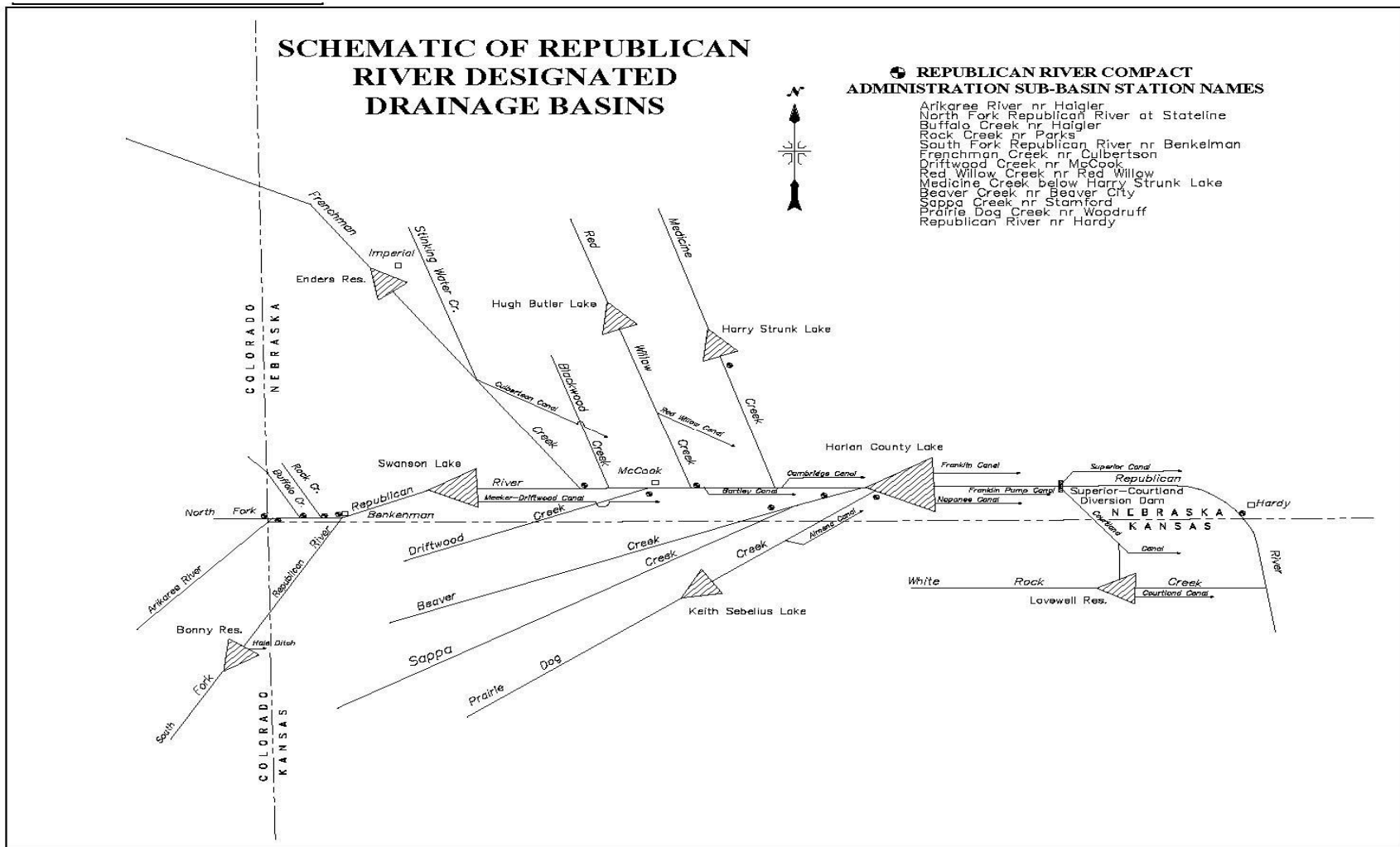
*Most Recent WSY prior to the current accounting year.

Example calculation for Table 5F

Colorado		
Water Short Year Pursuant to III.J	Beaver Creek Allocation	Reduction = Average of last 5 WSY Beaver Creek Allocations
	Col. 1	Col. 2
2002	770	
2003	260	
2004	360	
2005	910	
2006	1420	
2007	2320	744
2013	1130	1054
2014	1250	1228
2015	2130	1406
2016	2520	1650

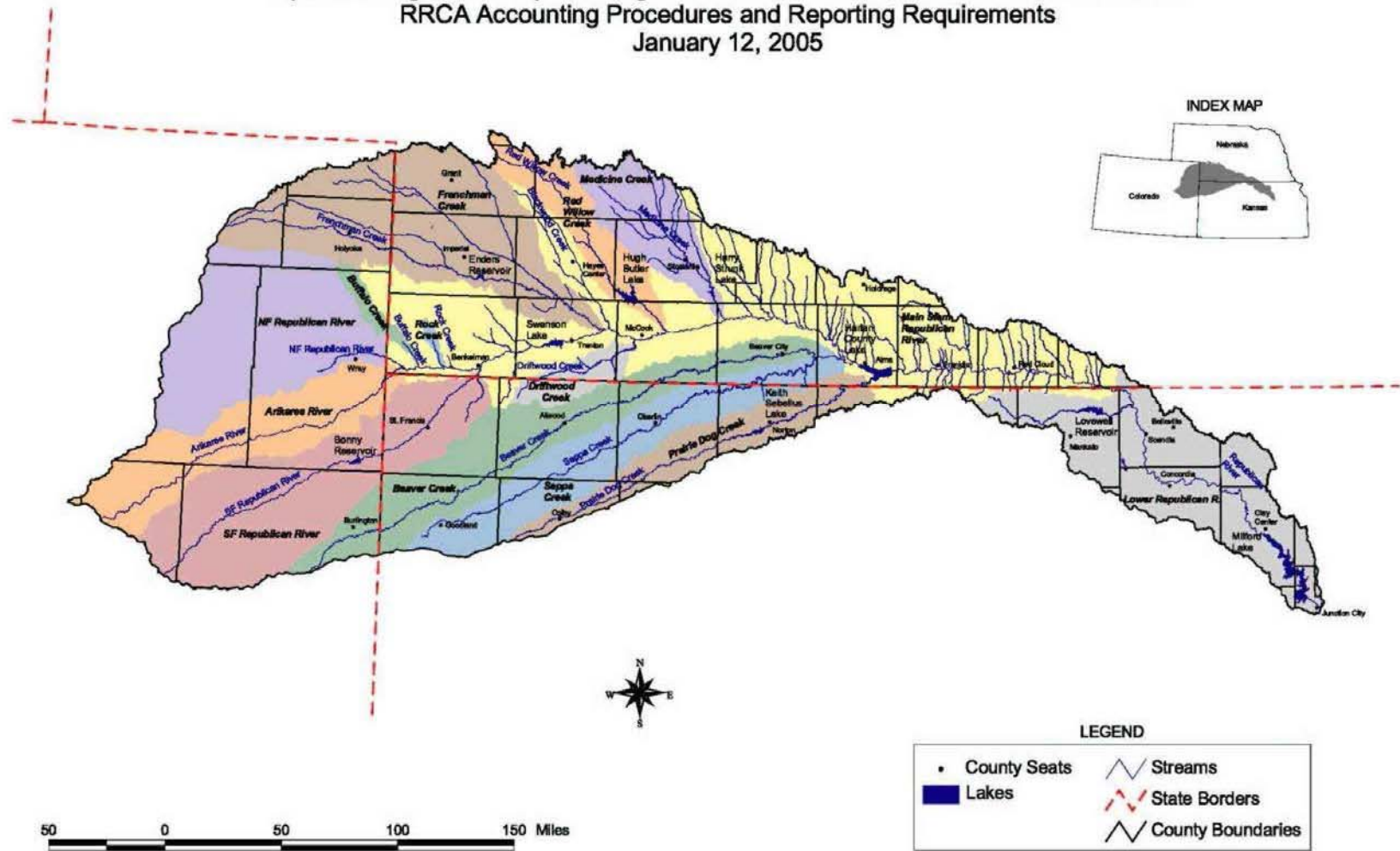


Basin Map Attached to Compact that Shows the Streams and the Basin Boundaries



Line Diagram of Designated Drainage Basins Showing Federal Reservoirs and Sub-basin Gaging Stations

Update of Figure 3 - Map Showing Sub-basins, Streams, and the Basin Boundaries
RRCA Accounting Procedures and Reporting Requirements
January 12, 2005



Map Showing Sub-basins, Streams, and the Basin Boundaries

Attachment 1: Sub-basin Flood Flow Thresholds

Sub-basin	Sub-basin Flood Flow Threshold Acre-feet per Year ⁴
Arikaree River	16,400
North Fork of Republican River	33,900
Buffalo Creek	4,800
Rock Creek	9,800
South Fork of Republican River	30,400
Frenchman Creek	51,900
Driftwood Creek	9,400
Red Willow Creek	15,100
Medicine Creek	55,100
Beaver Creek	13,900
Sappa Creek	26,900
Prairie Dog	15,700

⁴ Flows considered to be Flood Flows are flows in excess of the 94% flow based on a flood frequency analysis for the years 1971-2000. The Gaged Flows are measured after depletions by Beneficial Consumptive Use and change in reservoir storage.

Attachment 2: Description of the Consensus Plan for Harlan County Lake

The Consensus Plan for operating Harlan County Lake was conceived after extended discussions and negotiations between Reclamation and the Corps. The agreement shaped at these meetings provides for sharing the decreasing water supply into Harlan County Lake. The agreement provides a consistent procedure for: updating the reservoir elevation/storage relationship, sharing the reduced inflow and summer evaporation, and providing a January forecast of irrigation water available for the following summer.

During the interagency discussions the two agencies found agreement in the following areas:

- The operating plan would be based on current sediment accumulation in the irrigation pool and other zones of the project.
- Evaporation from the lake affects all the various lake uses in proportion to the amount of water in storage for each use.
- During drought conditions, some water for irrigation could be withdrawn from the sediment pool.
- Water shortage would be shared between the different beneficial uses of the project, including fish, wildlife, recreation and irrigation.

To incorporate these areas of agreement into an operation plan for Harlan County Lake, a mutually acceptable procedure addressing each of these items was negotiated and accepted by both agencies.

1. Sediment Accumulation.

The most recent sedimentation survey for Harlan County project was conducted in 1988, 37 years after lake began operation. Surveys were also performed in 1962 and 1972; however, conclusions reached after the 1988 survey indicate that the previous calculations are unreliable. The 1988 survey indicates that, since closure of the dam in 1951, the accumulated sediment is distributed in each of the designated pools as follows:

Flood Pool	2,387 Acre-feet
Irrigation Pool	4,853 Acre-feet
Sedimentation Pool	33,527 Acre-feet

To insure that the irrigation pool retained 150,000 Acre-feet of storage, the bottom of the irrigation pool was lowered to 1,932.4 feet, msl, after the 1988 survey.

To estimate sediment accumulation in the lake since 1988, we assumed similar conditions have occurred at the project during the past 11 years. Assuming a consistent rate of deposition since 1988, the irrigation pool has trapped an additional 1,430 Acre-feet.

A similar calculation of the flood control pool indicates that the flood control pool has captured an additional 704 Acre-feet for a total of 3,090 Acre-feet since construction.

The lake elevations separating the different pools must be adjusted to maintain a 150,000-acre-foot irrigation pool and a 500,000-acre-foot flood control pool. Adjusting these elevations results in the following new elevations for the respective pools (using the 1988 capacity tables).

Top of Irrigation Pool	1,945.70 feet, msl
Top of Sediment Pool	1,931.75 feet, msl

Due to the variability of sediment deposition, we have determined that the elevation capacity relationship should be updated to reflect current conditions. We will complete a new sedimentation survey of Harlan County Lake this summer, and new area capacity tables should be available by early next year. The new tables may alter the pool elevations achieved in the Consensus Plan for Harlan County Lake.

2. Summer Evaporation.

Evaporation from a lake is affected by many factors including vapor pressure, wind, solar radiation, and salinity of the water. Total water loss from the lake through evaporation is also affected by the size of the lake. When the lake is lower, the surface area is smaller and less water loss occurs. Evaporation at Harlan County Lake has been estimated since the lake’s construction using a Weather Service Class A pan which is 4 feet in diameter and 10 inches deep. We and Reclamation have jointly reviewed this information and assumed future conditions to determine an equitable method of distributing the evaporation loss from the project between irrigation and the other purposes.

During those years when the irrigation purpose expected a summer water yield of 119,000 Acre-feet or more, it was determined that an adequate water supply existed and no sharing of evaporation was necessary. Therefore, evaporation evaluation focused on the lower pool elevations when water was scarce. Times of water shortage would also generally be times of higher evaporation rates from the lake.

Reclamation and we agreed that evaporation from the lake during the summer (June through September) would be distributed between the irrigation and sediment pools based on their relative percentage of the total storage at the time of evaporation. If the sediment pool held 75 percent of the total storage, it would be charged 75 percent of the evaporation. If the sediment pool held 50 percent of the total storage, it would be charged 50 percent of the evaporation. At the bottom of the irrigation pool (1,931.75 feet, msl) all of the evaporation would be charged to the sediment pool.

Due to downstream water rights for summer inflow, neither the irrigation nor the

sediment pool is credited with summer inflow to the lake. The summer inflows would be assumed passed through the lake to satisfy the water right holders. Therefore, Reclamation and we did not distribute the summer inflow between the project purposes.

As a result of numerous lake operation model computer runs by Reclamation, it became apparent that total evaporation from the project during the summer averaged about 25,000 Acre-feet during times of lower lake elevations. These same models showed that about 20 percent of the evaporation should be charged to the irrigation pool, based on percentage in storage during the summer months. About 20 percent of the total lake storage is in the irrigation pool when the lake is at elevation 1,935.0 feet, msl. As a result of the joint study, Reclamation and we agreed that the irrigation pool would be credited with 20,000 Acre-feet of water during times of drought to share the summer evaporation loss.

Reclamation and we further agreed that the sediment pool would be assumed full each year. In essence, if the actual pool elevation were below 1,931.75 feet, msl, in January, the irrigation pool would contain a negative storage for the purpose of calculating available water for irrigation, regardless of the prior year's summer evaporation from sediment storage.

3. Irrigation withdrawal from sediment storage.

During drought conditions, occasional withdrawal of water from the sediment pool for irrigation is necessary. Such action is contemplated in the Field Working Agreement and the Harlan County Lake Regulation Manual: "Until such time as sediment fully occupies the allocated reserve capacity, it will be used for irrigation and various conservation purposes, including public health, recreation, and fish and wildlife preservation."

To implement this concept into an operation plan for Harlan County Lake, Reclamation and we agreed to estimate the net spring inflow to Harlan County Lake. The estimated inflow would be used by the Reclamation to provide a firm projection of water available for irrigation during the next season.

Since the construction of Harlan County Lake, inflows to the lake have been depleted by upstream irrigation wells and farming practices. Reclamation has recently completed an in-depth study of these depleted flows as a part of their contract renewal process. The study concluded that if the current conditions had existed in the basin since 1931, the average spring inflow to the project would have been 57,600 Acre-feet of water. The study further concluded that the evaporation would have been 8,800 Acre-feet of water during the same period. Reclamation and we agreed to use these values to calculate the net inflow to the project under the current conditions.

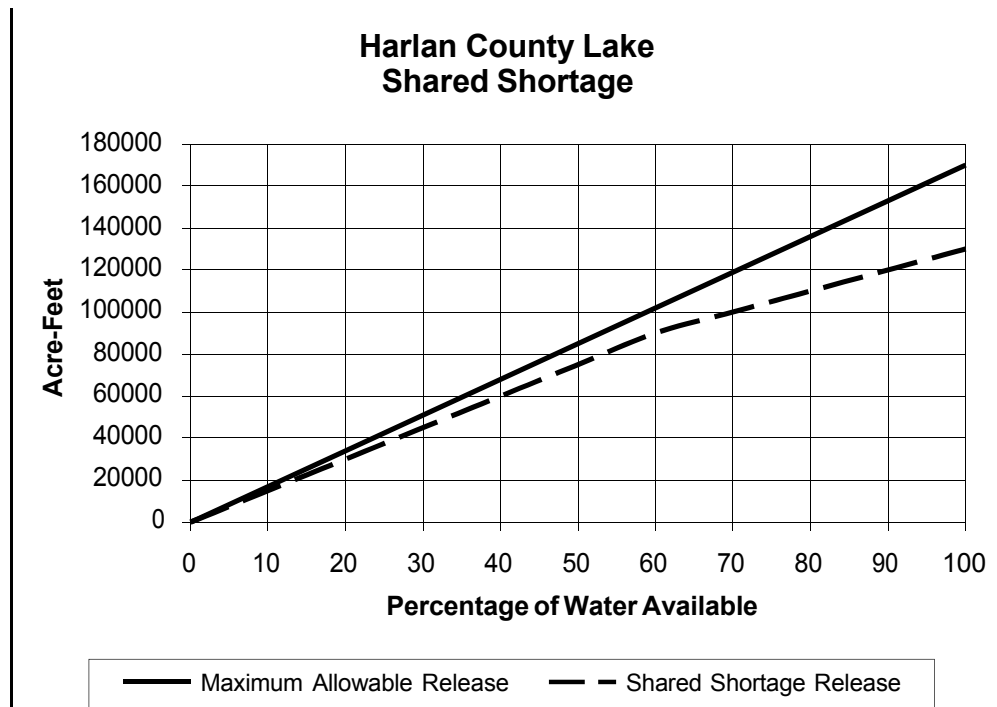
In addition, both agencies also recognized that the inflow to the project could continue to decrease with further upstream well development and water conservation farming. Due to these concerns, Reclamation and we determined that the previous 5-year inflow values would be

averaged each year and compared to 57,600 Acre-feet. The inflow estimate for Harlan County Lake would be the smaller of these two values.

The estimated inflow amount would be used in January of each year to forecast the amount of water stored in the lake at the beginning of the irrigation season. Based on this forecast, the irrigation districts would be provided a firm estimate of the amount of water available for the next season. The actual storage in the lake on May 31 would be reviewed each year. When the actual water in storage is less than the January forecast, Reclamation may draw water from sediment storage to make up the difference.

4. Water Shortage Sharing.

A final component of the agreement involves a procedure for sharing the water available during times of shortage. Under the shared shortage procedure, the irrigation purpose of the project would remove less water than otherwise allowed and alleviate some of the adverse effects to the other purposes. The procedure would also extend the water supply during times of drought by “banking” some water for the next irrigation season. The following graph illustrates the shared shortage releases.



5. Calculation of Irrigation Water Available

Each January, the Reclamation would provide the Bostwick irrigation districts a firm estimate of the quantity of water available for the following season. The firm estimate of water available for irrigation would be calculated by using the following equation and shared shortage

adjustment:

$$\text{Storage} + \text{Summer Sediment Pool Evaporation} + \text{Inflow} - \text{Spring Evaporation} = \text{Maximum Irrigation Water Available}$$

The variables in the equation are defined as:

- Maximum Irrigation Water Available. Maximum irrigation supply from Harlan County Lake for that irrigation season.
- Storage. Actual storage in the irrigation pool at the end of December. The sediment pool is assumed full. If the pool elevation is below the top of the sediment pool, a negative irrigation storage value would be used.
- Inflow. The inflow would be the smaller of the past 5-year average inflow to the project from January through May, or 57,600 Acre-feet.
- Spring Evaporation. Evaporation from the project would be 8,800 Acre-feet which is the average January through May evaporation.
- Summer Sediment Pool Evaporation. Summer evaporation from the sediment pool during June through September would be 20,000 Acre-feet. This is an estimate based on lower pool elevations, which characterize the times when it would be critical to the computations.

6. Shared Shortage Adjustment

To ensure that an equitable distribution of the available water occurs during short-term drought conditions, and provide for a “banking” procedure to increase the water stored for subsequent years, a shared shortage plan would be implemented. The maximum water available for irrigation according to the above equation would be reduced according to the following table. Linear interpolation of values will occur between table values.

Shared Shortage Adjustment Table

Irrigation Water Available (Acre-feet)	Irrigation Water Released (Acre-feet)
0	0
17,000	15,000
34,000	30,000
51,000	45,000
68,000	60,000
85,000	75,000
102,000	90,000
119,000	100,000
136,000	110,000
153,000	120,000
170,000	130,000

7. Annual Shutoff Elevation for Harlan County Lake

The annual shutoff elevation for Harlan County Lake would be estimated each January and finally established each June.

The annual shutoff elevation for irrigation releases will be estimated by Reclamation each January in the following manner:

1. Estimate the May 31 Irrigation Water Storage (IWS) (Maximum 150,000 Acre-feet) by taking the December 31 irrigation pool storage plus the January-May inflow estimate (57,600 Acre-feet or the average inflow for the last 5-year period, whichever is less) minus the January-May evaporation estimate (8,800 Acre-feet).
2. Calculate the estimated Irrigation Water Available, including all summer evaporation, by adding the Estimated Irrigation Water Storage (from item 1) to the estimated sediment pool summer evaporation (20,000 AF).
3. Use the above Shared Shortage Adjustment Table to determine the acceptable Irrigation Water Release from the Irrigation Water Available.
4. Subtract the Irrigation Water Release (from item 3) from the Estimated IWS (from item 1). The elevation of the lake corresponding to the resulting irrigation storage is the Estimated Shutoff Elevation. The shutoff elevation will not be below the bottom of the irrigation pool if over 119,000 AF of water is supplied to the districts, nor below 1,927.0 feet, msl. If the shutoff elevation is below the irrigation pool, the maximum irrigation release is 119,000 AF.

The annual shutoff elevation for irrigation releases would be finalized each June in accordance with the following procedure:

1. Compare the estimated May 31 IWS with the actual May 31 IWS.
2. If the actual end of May IWS is less than the estimated May IWS, lower the shutoff elevation to account for the reduced storage.
3. If the actual end of May IWS is equal to or greater than the estimated end of May IWS, the estimated shutoff elevation is the annual shutoff elevation.
4. The shutoff elevation will never be below elevation 1,927.0 feet, msl, and will not be below the bottom of the irrigation pool if more than 119,000 Acre-feet of water is supplied to the districts.

Attachment 3: Inflows to Harlan County Lake 1993 Level of Development

BASELINE RUN - 1993 LEVEL INFLOW TO HARLAN COUNTY RESERVOIR

YEAR	JAN	FEB	MAR	APR	MAY	JUN	JUL	AUG	SEP	OCT	NOV	DEC	TOTAL
1931	10.2	10.8	13.4	5.0	18.8	15.8	4.3	1.8	1.8	0.0	0.1	0.1	82.1
1932	6.8	16.6	18.5	4.6	3.8	47.6	3.8	2.8	4.8	0.0	0.0	0.4	109.7
1933	0.4	0.0	3.9	30.2	31.0	5.4	1.8	0.0	10.4	0.0	2.6	5.5	91.2
1934	2.1	0.0	3.2	1.8	0.7	7.3	0.8	0.0	1.3	0.0	2.2	0.0	19.4
1935	0.3	0.1	0.7	4.2	0.8	389.3	6.1	19.1	26.1	2.4	5.2	0.9	455.2
1936	0.3	0.0	11.9	0.0	35.9	4.7	0.4	0.0	1.8	0.0	1.6	3.8	60.4
1937	4.8	12.9	6.0	2.5	0.0	12.6	6.3	6.9	2.4	0.0	0.0	12.4	66.8
1938	9.9	7.8	8.7	10.4	18.7	8.6	7.3	7.8	4.9	0.2	0.0	4.7	89.0
1939	2.7	7.5	9.6	12.2	6.6	13.3	5.0	4.1	0.0	0.0	0.0	0.0	61.0
1940	0.0	0.0	12.2	5.2	4.6	23.7	2.8	3.2	0.0	3.6	0.0	1.4	56.7
1941	0.0	10.6	10.6	7.7	17.2	67.1	28.9	19.7	14.9	8.3	6.7	7.1	198.8
1942	3.3	10.6	0.5	34.1	30.8	83.9	11.7	10.9	36.5	3.1	8.7	0.3	234.4
1943	1.2	11.2	14.6	31.4	4.7	28.3	4.8	0.3	0.9	0.0	0.0	11.8	109.2
1944	0.1	4.3	9.0	43.1	31.9	63.9	26.6	15.4	0.5	0.3	3.0	4.5	202.6
1945	4.3	7.8	5.7	9.5	4.1	53.5	5.0	0.9	1.5	5.0	6.0	6.3	109.6
1946	5.9	11.2	9.3	4.9	7.0	3.1	1.6	11.4	28.1	129.9	25.0	12.1	249.5
1947	1.1	3.2	10.4	8.2	11.9	195.4	22.3	5.9	2.9	0.2	0.3	0.3	262.1
1948	6.2	9.8	24.1	5.4	0.2	39.8	13.5	6.8	4.2	0.0	0.1	0.1	110.2
1949	2.0	1.5	25.2	16.3	49.0	57.4	9.2	5.5	2.1	3.0	2.8	0.3	174.3
1950	0.3	5.7	10.8	10.9	28.9	10.1	12.7	9.3	7.8	7.2	3.8	3.1	110.6
1951	3.8	3.4	7.1	5.3	42.0	39.9	42.1	10.1	36.0	15.5	14.8	8.9	228.9
1952	16.4	21.4	26.3	23.8	34.6	4.0	9.3	3.1	1.5	11.7	4.3	0.1	156.5
1953	1.8	4.6	5.3	3.3	15.1	9.5	1.8	0.2	0.0	0.0	2.8	0.1	44.5
1954	1.0	6.8	1.9	3.2	7.1	2.4	0.0	1.2	0.0	0.0	0.0	0.0	23.6
1955	0.0	4.0	6.3	4.8	2.9	6.4	2.7	0.0	1.4	0.0	0.0	0.0	28.5
1956	1.6	3.4	2.9	2.4	1.3	1.5	0.0	0.6	0.0	0.0	0.0	0.0	13.7
1957	0.0	4.1	6.2	12.8	3.5	62.4	21.3	1.2	2.0	3.4	4.5	4.7	126.1
1958	0.8	3.0	14.2	14.0	18.7	1.3	3.4	2.2	0.0	0.4	0.0	0.6	58.6
1959	1.9	15.4	16.4	8.5	13.6	4.2	1.4	1.2	0.0	4.3	1.0	4.5	72.4
1960	1.4	12.3	71.4	23.9	21.7	53.7	14.1	3.2	0.0	0.0	0.2	2.8	204.7
1961	2.3	6.4	7.7	7.4	26.5	24.0	7.2	4.9	0.0	2.3	4.8	1.7	95.2

Attachment 3: Inflows to Harlan County Lake 1993 Level of Development

BASELINE RUN - 1993 LEVEL INFLOW TO HARLAN COUNTY RESERVOIR

YEAR	JAN	FEB	MAR	APR	MAY	JUN	JUL	AUG	SEP	OCT	NOV	DEC	TOTAL
1962	4.5	9.1	16.2	9.9	14.4	42.6	41.6	21.1	2.3	8.7	8.3	5.7	184.4
1963	3.4	18.2	18.2	15.0	12.7	14.7	3.4	6.1	8.7	0.8	5.3	1.8	108.3
1964	5.4	7.6	8.3	8.4	9.9	11.9	7.2	6.5	2.4	1.9	1.4	2.3	73.2
1965	6.0	8.1	11.1	12.8	32.8	40.0	22.9	6.5	37.2	53.7	19.5	11.0	261.6
1966	8.9	21.4	15.7	11.4	12.0	34.7	12.4	2.5	3.5	5.4	6.8	5.7	140.4
1967	7.2	11.5	11.5	12.9	9.1	75.3	43.7	15.3	4.4	7.3	6.9	5.4	210.5
1968	3.9	10.2	8.5	11.6	10.8	12.5	3.1	2.7	1.6	2.0	4.3	3.4	74.6
1969	4.2	10.8	24.5	15.1	18.9	17.5	17.0	12.6	16.6	9.2	11.8	9.9	168.1
1970	3.5	8.7	8.5	10.5	11.1	7.7	4.6	3.2	0.5	3.3	4.7	4.5	70.8
1971	4.1	10.3	12.4	12.8	18.3	7.2	8.4	6.2	1.9	4.2	7.3	7.1	100.2
1972	5.5	8.1	9.2	8.3	14.8	8.5	6.5	4.4	0.1	2.9	7.6	4.1	80.0
1973	11.4	14.2	19.0	16.2	17.4	20.9	9.1	1.9	8.4	19.6	11.9	13.2	163.2
1974	13.2	13.4	12.0	14.3	15.4	17.2	5.5	0.0	0.0	0.0	4.9	5.5	101.4
1975	7.2	8.2	13.6	14.8	12.0	48.1	11.6	7.4	0.1	3.0	6.2	7.3	139.5
1976	7.0	10.2	10.1	16.0	12.1	3.5	2.2	1.8	0.9	1.0	3.2	3.1	71.1
1977	4.4	9.6	12.9	21.2	31.5	12.1	5.9	1.9	10.6	4.1	5.5	5.3	125.0
1978	5.0	6.5	20.6	12.9	11.8	3.8	0.0	1.0	0.0	0.0	0.3	1.6	63.5
1979	1.3	7.6	21.5	18.8	15.9	5.4	10.4	10.6	1.6	0.9	3.6	6.2	103.8
1980	5.7	9.3	11.6	15.2	10.4	2.1	2.5	0.0	0.0	0.0	2.5	2.2	61.5
1981	5.5	6.0	11.6	14.9	22.5	6.4	11.5	16.3	4.3	2.5	6.7	6.2	114.4
1982	5.3	12.5	17.9	14.3	26.8	27.1	8.9	2.7	0.0	6.5	6.3	15.5	143.8
1983	6.5	9.7	27.2	16.4	41.4	74.2	10.7	7.6	3.8	3.1	6.7	5.2	212.5
1984	6.8	14.6	17.2	32.9	40.6	15.5	8.1	4.5	0.0	5.5	4.8	6.2	156.7
1985	6.9	14.1	13.6	11.9	27.4	9.9	10.0	2.0	6.0	8.5	5.6	5.8	121.7
1986	9.1	9.4	12.2	11.7	34.3	13.0	13.5	4.6	3.3	5.9	5.4	7.1	129.5
1987	5.9	9.2	19.7	24.1	24.3	11.7	19.0	5.7	2.3	2.7	8.2	7.0	139.8
1988	6.2	13.7	11.6	15.2	15.2	7.0	17.9	10.4	0.6	2.0	5.9	5.4	111.1
1989	5.4	5.9	10.5	9.1	11.4	11.8	14.0	6.2	0.2	3.1	3.1	3.5	84.2
1990	6.6	7.7	13.2	9.7	15.5	1.4	4.3	10.7	0.6	3.2	2.0	2.7	77.6
1991	2.4	8.0	9.0	10.6	15.2	3.9	1.9	0.5	0.0	0.0	2.7	4.8	59.0
1992	8.0	8.8	12.7	8.5	4.5	6.1	6.5	9.4	2.4	6.9	6.7	5.2	85.7
1993	5.2	14.4	71.6	22.7	21.0	17.0	68.0	37.5	23.3	16.8	30.1	17.7	345.3
Avg	4.5	8.8	14.1	13.0	17.2	30.6	11.0	6.2	5.4	6.3	5.0	4.7	126.8

Attachment 4: Evaporation Loss Harlan County Lake 1993 Level of Development

BASELINE - 1993 LEVEL FLOWS - HARLAN COUNTY EVAPORATION													
YEAR	JAN	FEB	MAR	APR	MAY	JUN	JUL	AUG	SEP	OCT	NOV	DEC	TOTAL
1931	0.7	0.9	1.6	2.9	4.2	7.4	6.9	5.2	2.7	2.1	1.2	0.4	36.2
1932	0.6	0.8	1.5	2.7	4.1	5.0	6.8	5.0	2.7	2.1	1.2	0.4	32.9
1933	0.6	0.8	1.4	2.5	3.8	7.8	6.1	4.2	2.7	2.1	1.2	0.4	33.6
1934	0.6	0.8	1.4	2.4	4.5	6.5	8.0	6.2	2.7	2.0	1.2	0.4	36.7
1935	0.6	0.8	1.3	2.3	2.2	3.6	9.7	6.2	3.1	2.5	1.4	0.5	34.2
1936	0.7	0.9	1.6	2.9	5.5	6.8	8.7	6.5	2.7	2.1	1.2	0.4	40.0
1937	0.6	0.8	1.4	2.5	3.6	4.0	6.2	6.5	2.7	2.1	1.2	0.4	32.0
1938	0.6	0.9	1.5	2.7	3.4	4.9	6.5	5.7	2.7	2.1	1.2	0.4	32.6
1939	0.6	0.8	1.4	2.6	4.3	4.9	6.8	4.6	2.7	2.1	1.2	0.4	32.4
1940	0.6	0.8	1.4	2.4	3.5	5.0	6.5	4.6	2.7	2.1	1.2	0.4	31.2
1941	0.6	0.8	1.4	2.5	3.9	4.2	6.7	5.3	2.8	2.1	1.3	0.5	32.1
1942	0.6	0.9	1.5	2.8	4.0	5.2	8.3	5.1	3.2	2.5	1.5	0.5	36.1
1943	0.7	1.0	1.8	3.2	4.3	5.7	7.9	6.3	2.7	2.1	1.2	0.4	37.3
1944	0.6	0.8	1.4	2.7	4.2	5.3	7.0	5.8	3.5	2.6	1.5	0.5	35.9
1945	0.7	1.0	1.8	3.1	3.8	3.0	6.7	5.7	2.9	2.2	1.3	0.5	32.7
1946	0.6	0.9	1.6	2.8	3.5	5.1	5.6	4.4	2.9	2.7	1.8	0.6	32.5
1947	1.0	1.5	2.9	3.2	3.4	-1.2	5.8	5.3	3.7	1.7	0.5	0.1	27.9
1948	0.8	0.7	1.5	3.6	3.1	2.4	4.2	4.7	3.0	2.7	0.8	0.3	27.8
1949	0.1	0.9	0.7	1.8	1.1	0.7	6.5	4.1	3.1	1.7	1.5	0.4	22.6
1950	0.7	0.1	0.8	2.8	2.0	5.6	0.8	2.8	4.5	2.3	1.6	0.6	24.6
1951	0.5	0.2	2.1	0.7	-0.1	1.9	3.5	4.1	0.4	3.1	2.2	0.9	19.5
1952	1.1	1.2	1.9	2.5	5.2	6.2	1.5	3.4	3.6	2.9	1.1	-0.1	30.5
1953	0.5	1.0	1.5	2.9	4.7	4.5	4.6	6.6	5.3	3.3	0.1	0.0	35.0
1954	0.7	0.6	2.2	3.6	0.3	4.9	6.7	1.6	3.6	1.6	1.5	0.6	27.9
1955	0.5	1.0	2.1	4.6	3.4	-0.5	7.3	6.9	2.7	2.6	1.4	0.4	32.4
1956	0.6	1.1	1.9	2.8	3.9	4.5	5.0	3.7	4.7	3.7	1.3	0.5	33.7
1957	0.7	1.0	1.3	0.5	-0.6	-1.1	6.1	3.7	2.3	1.7	1.2	0.4	17.2
1958	0.7	0.1	1.0	0.6	2.3	4.4	1.0	1.9	3.3	3.3	1.0	0.6	20.2
1959	0.4	1.0	1.1	2.1	1.0	3.5	5.0	4.8	2.3	0.7	1.5	0.6	24.0
1960	0.1	0.7	2.0	2.7	0.9	0.1	4.9	3.6	3.9	2.0	1.3	0.4	22.6
1961	0.9	1.0	1.4	2.7	-1.1	0.6	5.1	2.9	1.2	2.4	0.7	0.1	17.9

Attachment 4: Evaporation Loss Harlan County Lake 1993 Level of Development

Attachment 4: Evaporation Loss Harlan County Lake 1993 Level of Development

YEAR	JAN	FEB	MAR	APR	MAY	JUN	JUL	AUG	SEP	OCT	NOV	DEC	TOTAL
1962	0.6	0.6	0.9	3.7	3.4	1.5	0.3	1.6	2.0	2.0	1.7	0.3	18.6
1963	0.7	1.4	1.3	4.5	4.6	6.3	6.1	3.1	-0.8	2.7	1.5	0.4	31.8
1964	0.8	0.8	1.7	3.2	5.6	1.2	6.9	3.0	3.0	3.3	1.2	0.6	31.3
1965	0.4	0.7	1.2	2.8	1.5	-0.5	2.0	2.8	-3.9	1.7	2.1	0.4	11.2
1966	0.9	0.8	2.9	2.7	7.5	2.8	5.8	3.7	2.7	2.8	1.5	0.4	34.5
1967	0.7	1.2	2.5	3.0	2.0	-2.9	1.6	4.5	3.5	2.0	1.6	0.4	20.1
1968	0.9	1.2	2.8	2.6	3.2	4.9	4.7	1.8	2.3	0.7	1.2	0.2	26.5
1969	0.4	0.6	2.4	3.3	0.1	3.8	-0.7	2.9	2.2	-1.0	1.5	0.4	15.9
1970	0.7	1.4	2.3	2.8	4.7	4.4	6.5	5.9	0.9	1.0	1.5	0.7	32.8
1971	0.7	0.2	2.0	2.9	0.7	5.1	3.4	4.5	1.4	1.5	0.2	0.5	23.1
1972	0.8	1.3	2.0	1.7	1.1	0.0	3.3	1.8	2.1	1.7	-0.4	0.1	15.5
1973	0.5	1.1	-0.7	2.5	3.4	6.7	-1.7	4.2	-3.0	0.2	0.2	0.2	13.6
1974	0.7	1.5	2.6	1.5	3.7	2.5	9.1	2.6	3.4	1.4	1.1	0.3	30.4
1975	0.7	0.7	2.0	2.1	0.8	1.1	4.3	2.7	3.0	3.4	0.7	0.6	22.1
1976	0.8	1.2	1.7	0.7	1.5	5.0	5.9	5.7	-0.2	1.4	1.4	0.7	25.8
1977	0.7	1.3	0.2	1.1	0.0	4.6	4.0	0.6	2.0	1.6	1.0	0.4	17.5
1978	0.5	0.7	1.2	3.4	3.9	6.2	7.1	4.5	4.5	3.0	1.1	0.5	36.6
1979	0.5	0.6	1.1	3.9	4.4	4.6	3.5	5.1	4.1	2.8	1.4	0.7	32.7
1980	0.5	0.6	1.2	3.4	3.7	4.7	6.8	6.0	3.9	2.7	1.3	0.6	35.4
1981	0.5	0.6	1.2	3.8	3.2	4.8	4.2	3.7	2.9	1.7	1.3	0.7	28.6
1982	0.5	0.7	1.2	3.9	3.8	3.9	5.1	3.8	2.9	2.2	1.4	0.8	30.2
1983	0.5	0.7	1.4	2.9	4.2	5.3	8.6	7.2	4.6	1.8	1.5	0.6	39.3
1984	0.6	0.8	1.4	2.9	4.2	5.8	7.2	5.7	4.7	1.4	1.4	0.7	36.8
1985	0.5	0.7	1.3	2.3	4.0	4.5	5.6	3.5	3.8	1.5	1.5	0.7	29.9
1986	0.6	0.7	1.3	2.8	4.4	5.8	6.7	4.0	2.7	1.3	1.4	0.7	32.4
1987	0.5	0.8	1.3	3.1	4.2	6.2	6.9	3.5	3.1	2.2	1.4	0.7	33.9
1988	0.5	0.7	1.3	3.5	4.9	6.6	4.6	4.8	3.5	2.2	1.4	0.7	34.7
1989	0.5	0.7	1.2	4.2	4.5	4.4	4.8	3.6	3.0	2.5	1.4	0.7	31.5
1990	0.5	0.7	1.2	3.0	3.5	5.6	6.4	4.0	5.0	3.4	1.4	0.6	35.3
1991	0.5	0.7	1.2	2.8	3.3	5.5	6.0	5.0	5.1	3.2	1.3	0.6	35.2
1992	0.6	0.7	1.2	1.8	3.2	2.2	4.1	3.5	4.2	2.9	1.9	1.0	27.3
1993	0.6	0.5	1.0	2.2	3.1	4.6	4.2	4.9	4.5	4.4	3.1	1.2	34.3
Avg	0.6	0.8	1.5	2.7	3.2	3.9	5.3	4.3	2.8	2.2	1.3	0.5	29.1

Attachment 5: Projected Water Supply Spread Sheet Calculations

Trigger Calculations Based on Harlan County Lake Irrigation Supply	Units-1000 Acre-feet		Irrigation Trigger		119.0		Assume that during irrigation release season HCL Inflow = Evaporation Loss						
			Total Irrigation Supply		130.0								
			Bottom Irrigation		164.1								
			Evaporation Adjust		20.0								
	Oct	Nov	Dec	Jan	Feb	Mar	Apr	May	Jun	Jul	Aug	Sep	Total
1993 Level AVE inflow	6.3	5	4.7	4.5	8.8	14.1	13.0	17.2	30.6	11.0	6.2	5.4	126.8
1993 Level AVE evap (1931-93)	2.2	1.3	0.5	0.6	0.8	1.5	2.7	3.2	3.9	5.3	4.3	2.8	29.1
Avg. Inflow Last 5 Years	10.8	13.0	12.3	12.9	16.6	22.4	19.4	18.1	14.8	16.5	11.0	4.7	172.6

Year 2001-2002 Oct - Jun Trigger and Irrigation Supply Calculation										
Calculation Month	Oct	Nov	Dec	Jan	Feb	Mar	Apr	May	Jun	
Previous EOM Content	236.5	235.9	238.6	242.9	248.1	255.1	263.8	269.6	276.2	
Inflow to May 31	73.6	67.3	62.3	57.6	53.1	44.3	30.2	17.2	0.0	
Last 5 Yrs Avg Inflow to May 31	125.6	114.8	101.7	89.5	76.6	59.9	37.5	18.1	0.0	
Evap to May 31	12.8	10.6	9.3	8.8	8.2	7.4	5.9	3.2	0.0	
Est. Cont May 31	297.3	292.6	291.6	291.7	293.0	292.0	288.1	283.6	276.2	
Est. Elevation May 31	1944.44	1944.08	1944.00	1944.01	1944.11	1944.03	1943.72	1943.37	1942.77	
Max. Irrigation Available	153.2	148.5	147.5	147.6	148.9	147.9	144.0	139.5	132.1	
Irrigation Release Est.	120.1	117.4	116.8	116.8	118.1	117.1	116.8	116.8	116.8	
Trigger - Yes/No	NO	YES	YES	YES	YES	YES	YES	YES	YES	
130 kAF Irrigation Supply - Yes/No	NO	NO	NO	NO	NO	NO	NO	NO	NO	

Attachment 5: Projected Water Supply Spread Sheet Calculations

Year 2002				
Jul - Sep				
Final Trigger and				
Total Irrigation Supply				
Calculation				
Calculation Month		Jul	Aug	Sep
Previous EOM Irrigation Release Est.		116.8	116.0	109.7
Previous Month Inflow		5.5	0.5	1.3
Previous Month Evap		6.3	6.8	6.6
Irrigation Release Estimate		116.0	109.7	104.4
Final Trigger - Yes/No		YES		
130 kAF Irrigation Supply - Yes/No		NO	NO	NO

Attachment 6: Computing Water Supplies and Consumptive Use Above Guide Rock

A	B	C	D	E	F	G	H	I	J	K	L	M	N	O	P	Q	R
Total Main Stem VWS	Hardy gage	Superior-Courtland Diversion Dam Gage	Courtland Canal Diversions	Superior Canal Diversions	Courtland Canal Returns	Superior Canal Returns	Total Bostwick Returns Below Guide Rock	NE CBCU Below Guide Rock	KS CBCU Below Guide Rock	Total CBCU Below Guide Rock	Gain Guide Rock to Hardy	VWS Guide Rock to Hardy	Main Stem Virgin Water Supply Above Guide Rock	Nebraska Main Stem Allocation Above Hardy	Kansas Main Stem Allocation Above Hardy	Nebraska Guide Rock to Hardy Allocation	Kansas Guide Rock to Hardy Allocation
							Col F+ Col G			Col I + Col J	+ Col B - Col C+ Col K - Col H	+ Col L + Col K	Col A - Col M	.489 x Col N	.511 x Col N	.489 x Col M	.511 x Col M

Attachment 7: Calculations of Return Flows from Bureau of Reclamation Canals

Col 1	Col 2	Col 3	Col 4	Col 5	Col 6	Col 7	Col 8	Col 9	Col 10	Col 11	Col 12
Canal	Canal Diversion	Spill to Waste-way	Net Diversion	Field Deliveries	Canal Loss	Average Field Loss Factor	Field Loss	Total Loss from District	Percent field and Canal Loss That Returns to the Stream	Total return to Canal and Field Loss	Return as Percent of Canal Diversion
Name Canal	Headgate Diversion	Sum of measured spills to river	Col 2 - Col 3	Sum of deliveries to the field	Col 4 – Col 5	1 – Weighted Average Efficiency of Application System for the District*	Col 5 x Col 7	Col 6 + Col 8	Estimated Percent Loss*	Col 9 x Col 10 + Col 3	Col 11 / Col 2
∑ Irrigation Season											
∑ Non-Irrigation Season											
Example	100	5	95	60	35	30%	18	53	82%	48.46	48.5%
	100	5	95	0	95	30%	0	95	92%	87.4	87.4%
Culbertson						30%			82%		
						30%			92%		
Culbertson Extension						30%			82%		
						30%			92%		
Meeker - Driftwood						30%			82%		
						30%			92%		
Red Willow						30%			82%		
						30%			92%		
Bartley						30%			82%		
						30%			92%		
Cambridge						30%			82%		
						30%			92%		
Naponee						35%			82%		
						35%			92%		
Franklin						35%			82%		
						35%			92%		
Franklin Pump						35%			82%		
						35%			92%		
Almena						30%			82%		
Superior						31%			82%		
						31%			92%		
Nebraska Courtland						23%			82%		
Courtland Canal Above Lovewell (KS)						23%			82%		
Courtland Canal Below Lovewell						23%			82%		

*The average field efficiencies for each district and percent loss that returns to the stream may be reviewed and, if necessary, changed by the RRCA to improve the accuracy of the estimates.

Attachment 8: Calculation of the Computed Water Supply Adjustment and Remaining Compact Compliance Volume for

Implementation of 2016 RRCA Resolution

	Col 1	Col 2	Col 3	Col 4	Col 5	Col 6	Col 7	Col 8	Col 9	Col 10	Col 11	Col 12
	Start of Year RCCV	RCCV Adjustment	CCV	CCV Inflow Into HCL	RCCV Inflow Into HCL	Total CCV and RCCV Inflow Into HCL	Total CCV and RCCV Available for Release	CCV Released from HCL as Flow	CCV Released from HCL as Evaporation	CCV Retained in HCL (at End of Year)	CWSA	End of Year RCCV ⁵
	=Col. 12 of previous year	⁶	⁷			= Col. 4 + Col. 5	=Col. 6 + Col. 10 of previous year			= Col. 7 – (Col. 8 + Col. 9)	=Col. 10 – Col. 10 of previous year	= Col. 1 – Col. 2 + Col. 3 – Col. 6
Year 1												
Year 2												
Year 3												
Year 4												
Year 5												

This attachment provides definitions and example calculations for determining the Computed Water Supply Adjustment (CWSA), Remaining Compact Compliance Volume (RCCV), and other calculations necessary for implementation of the RRCA Resolution signed August 24, 2016, titled “Resolution Approving Long-Term Agreement Related to the Operation of Harlan County Lake for Compact Call Years.” An electronic copy of the spreadsheet containing the live formulas in this Attachment is included with the May 25, 2017, Accounting Procedures adopted by the RRCA and will be used as Attachment 8.

⁵ The formula for calculation of RCCV is based on calendar year operations and will vary when operations occur in a different calendar year than NERWS Credit is applied.

⁶ See Provision 10 of the RRCA Resolution signed August 24, 2016, titled “Resolution Approving Long-Term Agreement Related to the Operation of Harlan County Lake for Compact Call Years” for the terms of assigning RCCV Adjustment. The RCCV Adjustment for each year is equal to 20% of the unadjusted portion of the RCCV, if it is a non-Compact Call Year, plus any remaining volumetric reductions from the previous four years.

⁷ In years when the contributions from Nebraska’s water management activities, consistent with the 2016 CCY HCL Operations Resolution, are greater than CCV and the NERWS is equal to the greater contribution volume, CCV in Column 3 should also be set equal to the contribution.

Definitions

The definitions below identify additional terms from the Accounting Procedures and Resolution that are utilized in the calculations.

CCV Inflow Into HCL is the Compact Compliance Volume made available in HCL for Kansas exclusive use pursuant to the 2016 CCY HCL Operations Resolution;

CCV Released from HCL is the volume of CCV Inflow Into HCL and RCCV Inflow Into HCL that is released from HCL in a calendar year;

CCV Retained in HCL is the volume of CCV Inflow Into HCL and RCCV Inflow Into HCL that is not released from HCL in a calendar year;

RCCV Inflow Into HCL is the Remaining Compact Compliance Volume made available in HCL for Kansas exclusive use pursuant to 2016 CCY HCL Operations Resolution;

CWSA and RCCV Example Calculations

Five examples representing various conditions have been developed to illustrate calculations of the CWSA and RCCV. These examples are applicable to calculations based on calendar year operations and will vary when CCV and RCCV Inflow Into HCL occurs in a different calendar year than NERWS Credit is applied. The five examples are presented below:

- Example 1: **All CCV Inflow Into HCL is Passed Through HCL**
- Example 2: **A Portion of CCV Inflow Into HCL is Retained in HCL**
- Example 3: **A Portion of CCV Inflow Into HCL is Retained in HCL and Released in a Subsequent Calendar Year**
- Example 4: **RCCV Inflow Into HCL and CCV Inflow Into HCL**
- Example 5: **HCL Reservoir Accounting for CWSA**
- **RCCV Example Calculation**

Evaporation losses have been ignored in these examples for simplicity. In reality, any water stored in HCL, including water from CCV or RCCV sources, is subject to evaporation, per the current RRCA Accounting Procedures.

Example 1: All CCV Inflow Into HCL is Passed Through HCL

In this example, all CCV inflow into HCL is released in the same year (Year = 1) that the APV occurred.

Assumptions

- RCCV = 0
- CCV = 20,000 Acre-feet
- APV = 20,000 Acre-feet
- CCV Inflow Into HCL = 20,000 Acre-feet
- RCCV Inflow Into HCL = 0
- CCV Released from HCL = 20,000 Acre-feet
- CCV Retained in HCL = 0
- NERWS Credit = 20,000 Acre-feet

Computed Water Supply Adjustment (CWSA)

The Computed Water Supply Adjustment (CWSA) can simply be calculated by subtracting the CCV Released from HCL from the CCV Inflow into HCL:

$$\begin{aligned} \text{CWSA} &= \text{CCV Inflow Into HCL} + \text{RCCV Inflow Into HCL} - \text{CCV Released from HCL} \\ &= 20,000 + 0 - 20,000 = 0 \end{aligned}$$

Since all CCV inflow into HCL is passed through the reservoir within the same year, there is no CWSA adjustment necessary in Year 1 or in any subsequent year's accounting.

Example 2: A Portion of CCV Inflow Into HCL is Retained in HCL

This example includes some of the same initial conditions as in Example 1, except that a portion of the CCV Inflow Into HCL is retained into a subsequent year. Additional accounting adjustments are required as a result and are illustrated below:

Assumptions

- RCCV = 0
- CCV = 20,000 Acre-feet
- APV = 20,000 Acre-feet
- CCV Inflow Into HCL = 20,000 Acre-feet
- RCCV Inflow Into HCL = 0
- CCV Released from HCL = 15,000 Acre-feet
- CCV Retained in HCL = 5,000 Acre-feet
- NERWS Credit = 20,000 Acre-feet

Computed Water Supply Adjustments (CWSA)

Because a portion of the CCV Inflow Into HCL is retained in HCL, a positive CWSA results:

$$\begin{aligned} \text{CWSA} &= \text{CCV Inflow Into HCL} + \text{RCCV Inflow Into HCL} - \text{CCV Released from HCL} \\ &= 20,000 + 0 - 15,000 = 5,000 \text{ Acre-feet} \end{aligned}$$

The accounting adjustment to the Main Stem CWS in this example would be made through applying a CWSA of 5,000 acre-feet through the calculations in Subsection IV.B of the RRCA Accounting Procedures.

Example 3: A Portion of CCV Inflow Into HCL is Retained in HCL and Released in a Subsequent Calendar Year

This example is identical to the situation in Example 2 above, with the exception that we will also consider what accounting adjustments are needed in the subsequent year (Year 2) once CCV Retained in HCL is released from the reservoir.

Assumptions

- RCCV = 0
- CCV = 20,000 Acre-feet
- APV = 20,000 Acre-feet
- CCV Inflow Into HCL = 20,000 Acre-feet
- RCCV Inflow Into HCL = 0
- CCV Released from HCL = 25,000 Acre-feet
- CCV Retained in HCL = 0
- NERWS Credit = 20,000 Acre-feet

Computed Water Supply Adjustment (CWSA)

Because the CCV Released from HCL includes CCV water stored over from a previous year, the CCV Released from HCL is greater than the CCV and RCCV Inflow Into HCL, resulting in a negative CWSA: $CWSA = 20,000 + 0 - 25,000 = -5,000$ Acre-feet

The accounting adjustment to the Main Stem CWS in this example would be made through applying a CWSA of -5,000 acre-feet through the calculations in Subsection IV.B of the RRCA Accounting Procedures.

Example 4: RCCV Inflow Into HCL and CCV Inflow Into HCL

This example includes the additional consideration of Remaining Compact Compliance Volume (RCCV). The CCV in this example will also be greater than that used in the previous examples:

Year 1**Assumptions**

- RCCV = 0
- CCV = 55,000 Acre-feet
- APV = 20,000 Acre-feet
- CCV Inflow Into HCL = 20,000 Acre-feet
- RCCV Inflow Into HCL = 0
- CCV Released from HCL = 15,000 Acre-feet
- CCV Retained in HCL = 5,000 Acre-feet
- NERWS Credit = 55,000 Acre-feet

In this example the Year 1 NERWS Credit is larger than the CCV Inflow Into HCL because Kansas has determined that a portion of the Compact Compliance Volume will be carried over as RCCV in Year 2.

Computed Water Supply Adjustment (CWSA)

$$CWSA = 20,000 + 0 - 15,000 = 5,000 \text{ Acre-feet}$$

Remaining Compact Compliance Volume (RCCV) for Following Year

$$\begin{aligned} \text{Year 2 RCCV} &= \text{Start of Year 1 RCCV} - \text{RCCV Adjustment} + \text{CCV} - (\text{CCV Inflow Into HCL} + \\ &\text{RCCV Inflow Into HCL}) \\ &= 0 - 0 + 55,000 - (20,000 + 0) = 35,000 \text{ Acre-feet} \end{aligned}$$

The accounting adjustment to the Year 1 Main Stem CWS in this example would be made through applying a CWSA of 5,000 acre-feet through the calculations in Subsection IV.B of the RRCA Accounting Procedures.

Year 2

Assumptions

- RCCV = 35,000
- CCV = 10,000 Acre-feet
- APV = 45,000 Acre-feet
- CCV Inflow Into HCL = 10,000 Acre-feet
- RCCV Inflow Into HCL = 35,000 Acre-feet
- CCV Released from HCL = 50,000 Acre-feet
- CCV Retained in HCL = 0
- NERWS Credit = 10,000 Acre-feet⁸

Computed Water Supply Adjustment (CWSA)

As the CCV Released from HCL is greater than CCV and RCCV Inflow into HCL, a negative CWSA results.

$$\text{CWSA} = 10,000 + 35,000 - 50,000 = -5,000 \text{ Acre-feet}$$

The accounting adjustment to the Year 2 Main Stem CWS in this example would be made through applying a CWSA of -5,000 acre-feet through the calculations in Subsection IV.B of the RRCA Accounting Procedures.

Example 5: HCL Reservoir Accounting for CWSA

Because some of the accounting adjustments required under the examples described above involve multi-year operations, and because the current HCL water supply accounting methodologies under the Consensus Plan and the NBID-KBID MOA do not include consideration of several of the accounting components required under the new RRCA Resolutions, a reservoir accounting system may be needed for tracking certain portions of HCL content (CCV Retained in HCL). This example shows how this tracking might operate for HCL content, using a simple tabular format.

Year 1

Assumptions

- RCCV = 0
- CCV = 55,000 Acre-feet
- APV = 20,000 Acre-feet
- CCV Inflow Into HCL = 20,000 Acre-feet
- RCCV Inflow Into HCL = 0
- CCV Released from HCL = 15,000 Acre-feet
- CCV Retained in HCL = 5,000 Acre-feet
- NERWS Credit = 55,000 Acre-feet

⁸ With respect to the NERWS Credit in Year 2, the value is only 10,000 Acre-feet, despite the fact that 45,000 Acre-feet of the CCV and RCCV water from Years 1 and 2 were made available in HCL during Year 2. This is because the credit is applied in the years in which it is needed for compliance purposes, and not necessarily in the same year as when releases are made from HCL or augmentation water is pumped.

As with Example 4, this example represents a situation in which Kansas determines that not all of the CCV is required in Year 1, leading to RCCV that carries over into Year 2. In addition, Kansas determines that not all of the CCV delivered to HCL would need to be released in Year 1, resulting in a CWSA of 5,000 Acre-feet.

Year 2

Assumptions

- RCCV = 35,000 Acre-feet
- CCV = 10,000 Acre-feet
- APV = 11,000 Acre-feet
- CCV Inflow Into HCL = 10,000 Acre-feet
- RCCV Inflow Into HCL = 1,000 Acre-feet
- CCV Released from HCL = 16,000 Acre-feet
- CCV Retained in HCL = 0
- NERWS Credit = 10,000 Acre-feet

Remaining Compact Compliance Volume (RCCV) for Following Year

$$\begin{aligned} \text{Start of Year 3 RCCV} &= \text{Start of Year 2 RCCV} - \text{RCCV Adjustment} + \text{CCV} - (\text{CCV Inflow} \\ &\text{Into HCL} + \text{RCCV Inflow Into HCL}) \\ &= 35,000 - 0 + 10,000 - (10,000 + 1,000) = 34,000 \text{ Acre-feet} \end{aligned}$$

Table 1. Example of HCL Accounting for CWSA

Table 1: Example HCL Accounting for CWSA

	CCV Inflow Into HCL	RCCV Inflow Into HCL	Total CCV and RCCV Inflow Into HCL	Total CCV and RCCV Available for Release	CCV Released from HCL	CCV Retained in HCL (at End of Year)	CWSA
Year 0	0 af	0 af	0 af	0 af	0 af	0 af	0 af
Year 1	20,000 af	0 af	20,000 af	20,000 af	15,000 af	5,000 af	5,000 af
Year 2	10,000 af	1,000 af	11,000 af	16,000 af	16,000 af	0 af	-5,000 af

Table 1 above illustrates that once the RCCV or CCV water reaches HCL as inflow, there is no need to differentiate between the two sources, since both will be treated the same in terms of accounting adjustments, including when those supplies are released from the reservoir. It is sufficient, as a result, to include both water sources as one common pool for accounting purposes once they reach HCL. That is why both the last two terms in the table above (“CCV Released from HCL” and “CCV Retained in HCL”) only include the abbreviation “CCV”, even though they may include water from both CCV and RCCV inflows.

The examples contained in this attachment did not account for reservoir evaporation as a means to simplify the calculations. In reality, evaporation may impact the quantity of CCV water remaining within HCL. This evaporation will be assessed to the CCV Retained in HCL pool in proportion to the volume contained in this portion of the pool relative to the entire contents of the irrigation pool, consistent with methods employed by the Bureau of Reclamation to assess evaporation on water supplies within the reservoir.

CWSA and RCCV Tracking Example Calculations

This section contains an example of the calculations used to determine the CWSA, CCV, and RCCV and track how the RCCV changes year to year and between Compact Call Years and non-Compact Call Years.

Table 2. Example of Relationship between CCV and RCCV and annual tracking of CWSA

	Col. 1	Col. 2	Col. 3	Col. 4	Col. 5	Col. 6	Col. 7	Col. 8	Col. 9	Col. 10	Col. 11	Col. 12
	Start of Year RCCV	RCCV Adjustment	CCV	CCV Inflow Into HCL	RCCV Inflow Into HCL	Total CCV and RCCV Inflow Into HCL	Total CCV and RCCV Available for Release	CCV Released from HCL as Flow	CCV Released from HCL as Evaporation	CCV Retained in HCL (at End of Year)	CWSA	End of Year RCCV
	=Col. 12 of previous year					= Col. 4 + Col. 5	=Col. 6 + Col. 10 of previous year			= Col. 7 – (Col. 8 + Col. 9)	=Col. 10 – Col. 10 of previous year	= Col. 1 – Col. 2 + Col. 3 – Col. 6
Year 0	0	0	0	0	0	0	0	0	0	0	0	0
Year 1*	0	0	23,000	20,000	0	20,000	20,000	15,000	0	5,000	5,000	3,000
Year 2*	3,000	0	10,000	10,000	1,000	11,000	16,000	15,000	1,000	0	-5,000	2,000
Year 3*	2,000	0	15,000	15,000	0	15,000	15,000	15,000	0	0	0	2,000
Year 4	2,000	400	0	0	0	0	0	0	0	0	0	1,600
Year 5	1,600	400	0	0	0	0	0	0	0	0	0	1,200
Year 6	1,200	400	0	0	0	0	0	0	0	0	0	800
Year 7*	800	400	15,000	10,000	0	10,000	10,000	10,000	0	0	0	5,400
Year 8	5,400	1,400	0	0	0	0	0	0	0	0	0	4,000
Year 9	4,000	1,000	0	0	0	0	0	0	0	0	0	3,000

*Indicates Compact Call Year

**RESOLUTION APPROVING LONG-TERM AGREEMENTS
RELATED TO THE OPERATION OF HARLAN COUNTY LAKE
FOR COMPACT CALL YEARS**

August 24, 2016

Whereas, the States of Kansas, Nebraska, and Colorado (States) entered into a Final Settlement Stipulation (FSS), dated December 15, 2002, to resolve pending litigation in the United States Supreme Court regarding the Republican River Compact (Compact) in the case of *Kansas v. Nebraska and Colorado*, No. 126 Original; and

Whereas, the FSS was approved by the United States Supreme Court on May 19, 2003; and

Whereas, the States have previously determined and continue to hold that the Compact may be administered in a manner that increases flexibility for all water users, while remaining consistent with the terms of the Compact and the FSS; and

Whereas, the RRCA has previously enacted multiple resolutions to modify the operations of Harlan County Lake (HCL) and the RRCA Accounting Procedures for the years 2014, 2015, and 2016 to maximize the beneficial consumptive use of the waters of the Republican River Basin, and desires to establish a long-term agreement to implement similar modifications to Harlan County Lake operations and the RRCA Accounting Procedures to ensure the continued maximum beneficial consumptive use of the waters within the Basin; and

Whereas, the RRCA holds that *Project Water* means all water made up of flows of the Republican River basin, which may include flows resulting from water management actions, water rights administration and imported surface or groundwater supplies; and stored in Harlan County Lake for the benefit of water users in Kansas and/or Nebraska, pursuant to water right permits approved by the State of Nebraska.

Whereas, the intent of this Resolution is to build on the success of the prior Resolutions by establishing a process that applies during all Compact Call Years without the need for annual renewals.

NOW THEREFORE BE IT RESOLVED:

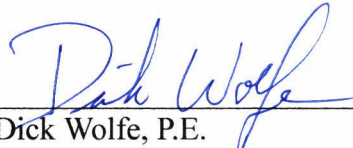
1. For this Resolution, the following definitions shall apply:
 - A. *Compact Call Year* means the calendar year that is designated by the State of Nebraska pursuant to its Republican River Basin Integrated Management Plans for Compact compliance activities, which may include augmentation, water rights administration, and other actions to effect Compact compliance.
 - B. *Compact Call Forecast Volume* means the amount of water that is identified through application of the forecasting methodology established in Nebraska's Republican River Basin Integrated Management Plans.
 - C. *Compact Compliance Volume* means the amount of water Nebraska would need to contribute to the natural flows of the Republican River Basin, for Kansas' exclusive use through augmentation activities, alone or in combination with other water management activities by the State of Nebraska, for purposes of ensuring Nebraska's Compact compliance.

- D. *Kansas Account* means an account that shall store all Project Water made available for the exclusive use by the Kansas Bostwick Irrigation District (KBID), and water supplies previously available to KBID under Warren Act Contract(s) existing as of the date of this Resolution.
- E. *Kansas Supplemental Account* means an account that shall store water supplies not in the Kansas Account and which shall be for use outside of KBID within the state of Kansas.
- F. *Remaining Compact Compliance Volume* means the portion of a previous year's Compact Compliance Volume retained for Kansas' use in a subsequent Compact Call Year subject to the conditions of Provisions 5 and 10.
2. Nebraska may supplement the natural flows of the Republican River Basin through augmentation discharges, alone or in combination with other water management activities beginning October 1 of the year preceding the year which is designated as a Compact Call Year and until such time as necessary to provide the Remaining Compact Compliance Volume, subject to the terms of Provision 5 and 10.
 3. Prior to October 1 of each Compact Call Year, Kansas and Nebraska shall meet to discuss the preliminary Compact Call Forecast Volume and the projected water supply available for irrigation within HCL for the upcoming year, and establish the portion of the Remaining Compact Compliance Volume that will be utilized to meet the conditions of Provisions 5 and 6.
 4. Nebraska shall establish, pursuant to the Integrated Management Plans, the Compact Call Forecast Volume no later than December 31 of each year.
 5. Nebraska shall make good faith efforts to ensure that, no later than June 1 of each Compact Call Year, the Kansas Account contains not less than the amount of water established by October 1 of the previous year as described in Provision 3 subject to Nebraska's operational capacity.
 6. Upon Kansas's request any portion of Remaining Compact Compliance Volume shall be administered to the Kansas Account or the Kansas Supplemental Account subject to Nebraska's operational capacity and Provision 3.
 7. Water in the Kansas Supplemental Account shall not be considered part of the Kansas Account for the purposes of Provision 5. Evaporation from water stored in the Kansas Supplemental Account shall be exclusively charged to Kansas.
 8. During Compact Call Years, Nebraska shall evaluate actual hydrologic conditions on a regular basis to estimate the Compact Compliance Volume. Beginning May 10 of each Compact Call Year, Nebraska shall provide the results of this estimate to Kansas and Colorado and to the United States not later than the tenth day of each month. Nebraska shall provide the other States the final Compact Compliance Volume no later than December 31 of each Compact Call Year.
 9. The accounting offset, equal to the final Compact Compliance Volume, for Nebraska's compliance operations shall be recorded in the "Imported Water Supply Credit" column of Nebraska's Table 3c and Table 5e and "Imported Water Supply Credit Above Guide Rock" column of Nebraska's Table 5c. The computed water supply will be reduced by the amount of augmentation water contributed to the natural flows of each respective

subbasin for the years in which the augmentation water contributions occur. Additionally, in the event that water contributed to the Kansas Account is not beneficially consumed within the year that it is provided, the Computed Water Supply will be adjusted as necessary to ensure that Nebraska receives full credit for the Compact Compliance Volume in that Compact Call Year. Subsequent release of water from the Kansas Account that was not beneficially consumed in a Compact Call Year, but for which Nebraska received full credit in a prior year, shall not increase the Computed Water Supply or allocation, and for purposes of Compact accounting shall be the last Project Water released from the Kansas Account.

10. Should the balance of the Remaining Compact Compliance Volume be greater than zero on January 1 of any year not designated as a Compact Call Year then the balance shall immediately be reduced by twenty-percent, and an equal volumetric reduction shall be applied to the balance of the Remaining Compact Compliance Volume on January 1 of each of the four subsequent years.
11. The compliance tests outlined in Tables 5A – 5E shall not apply when, on or before June 30:
 - A. the sum of all waters available for irrigation from Harlan County Lake, the Remaining Compact Compliance Volume, and the volume in the Kansas Supplemental Account, is greater than or equal to 119,000 acre-feet; or
 - B. the sum of the Kansas Account and Kansas Supplemental Account is greater than or equal to 68,000 acre-feet.
12. The RRCA agrees that if a state is developing or considering a management strategy, including supplementing the basin's natural water supply that may impact the availability, usability or timing of the water supply of another state, that state will share the concepts of the management strategy with the other States.
13. The RRCA is committed to the establishment of water storage accounts for Kansas and Nebraska in HCL. The RRCA agrees to cooperate on working with the United States and the Nebraska Bostwick Irrigation District and the Kansas Bostwick Irrigation District (Districts) to establish these accounts.
14. The RRCA Commissioners hereby agree that compliance with this Resolution constitutes compliance with the Final Settlement Stipulation and Republican River Compact
15. Re-examination and Termination.
 - A. The States agree to re-examine the terms of this Resolution to ensure they are being implemented as intended and with the desired effect not later than April 1, 2020.
 - B. The terms of this Resolution shall remain in full force and effect until terminated by election of one or more States, which termination may be effectuated on the following conditions:
 - i. The terminating State must provide a written Notice of Intent to Terminate to the RRCA not later than October 1 of the year in which a State desires to issue a Notice;
 - ii. The terms of this Resolution shall remain in full force and effect through December 31 of the second full year following the RRCA's receipt of a Notice of Intent to Terminate.

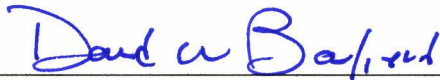
iii. The States agree to work in good faith to resolve any disputes arising from the interpretation of this resolution.



Dick Wolfe, P.E.
Colorado Commissioner
Chairman, RRCA

8/24/16

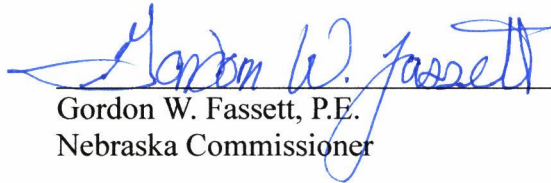
Date



David Barfield, P.E.
Kansas Commissioner

8/24/16

Date



Gordon W. Fassett, P.E.
Nebraska Commissioner

8/24/16

Date

RESOLUTION BY THE REPUBLICAN RIVER COMPACT ADMINISTRATION
APPROVING OPERATION AND ACCOUNTING FOR THE COLORADO COMPACT
COMPLIANCE PIPELINE AND COLORADO'S COMPLIANCE EFFORTS IN THE SOUTH
FORK REPUBLICAN RIVER BASIN

RECITALS

Whereas, the States of Kansas, Nebraska, and Colorado (each, a "State", and collectively, the "States") entered into a Final Settlement Stipulation ("FSS") as of December 15, 2002, to resolve pending litigation in the United States Supreme Court regarding the Republican River Compact ("Compact") in the case of *Kansas v. Nebraska and Colorado*, No. 126 Original;

Whereas, the FSS was approved by the United States Supreme Court on May 19, 2003;

Whereas, the State of Colorado's Computed Beneficial Consumptive Use of the waters of the Republican River Basin exceeded Colorado's Compact Allocation using the five-year running average to determine Compact compliance from 2003 through 2012, as provided in Subsection IV.D of the FSS;

Whereas, the Republican River Water Conservation District is a water conservation district created by Colorado statute to assist the State of Colorado to comply with the Compact;

Whereas, the Republican River Water Conservation District, acting by and through its Water Activity Enterprise ("RRWCD WAE"), has acquired fifteen wells ("Compact Compliance Wells") in the Republican River Basin in Colorado and has constructed collector pipelines, a storage tank, a main transmission pipeline, and an outlet structure capable of delivering groundwater to the North Fork of the Republican River for the sole purpose of offsetting stream depletions in order to comply with the State of Colorado's Compact Allocations;

Whereas, the RRWCD WAE has purchased groundwater rights in the Republican River Basin within Colorado and proposes to pump the historical consumptive use of some or all of these groundwater rights from the Compact Compliance Wells into the pipeline it has constructed and deliver that water into the North Fork of the Republican River near the Colorado/Nebraska state line to offset stream depletions in order to comply with Colorado's Compact Allocations (the "Colorado Compact Compliance Pipeline" or the "Pipeline");

Whereas, the States agreed to operate the Pipeline during 2014, 2015, and 2016 on certain terms. This Resolution does not affect accounting for those years;

Whereas, the States have now agreed to a long-term plan to operate the Pipeline on different terms, which are described below;

Whereas, Colorado, Kansas, and Nebraska wish to comply with their obligations under the Republican River Compact and believe the action described herein will assist the States in their continued efforts to meet those obligations while maximizing the beneficial use of the basin's water for their constituents;

Whereas, Kansas' water users in the South Fork sub-basin depend on stream flows for their livelihoods, and remain concerned about diminishing flows at the Colorado-Kansas state line;

Whereas, in addition to numerous other efforts to reduce consumption, Colorado has already removed from irrigation in the South Fork Republican River basin 23,838 acres;

Whereas, Colorado and Kansas share a belief that, by removing additional acres in the South Fork Republican River basin or otherwise reducing consumption as set forth herein, Colorado's consumption of water in the South Fork Republican River averaged over five years will be less than or equal to its sub-basin allocation plus half of the unallocated waters of the South Fork Republican River.

Now, therefore, it is hereby resolved that the RRCA approves operation and the related accounting procedures for the Colorado Compact Compliance Pipeline subject to the terms and conditions set forth herein, including in the Recitals set forth above, which are fully incorporated as part of the agreement between the States.

A. Colorado Compact Compliance Pipeline.

The operation of the Colorado Compact Compliance Pipeline is described below. The related changes to the RRCA Accounting Procedures and Reporting Requirements ("revised RRCA Accounting Procedures") are attached hereto as Exhibit 1. The Compact accounting will follow the terms and conditions described in this resolution and its exhibits. Beginning January 1, 2017, operation of the Pipeline and the related changes to the accounting procedures for the Pipeline is subject to the following terms and conditions:

1. The average annual historical consumptive use of the groundwater rights that will be diverted at the Compact Compliance Wells shall be the amounts determined by the Colorado Ground Water Commission pursuant to its rules and regulations, as shown on Exhibit 2.
2. Diversions from any individual Compact Compliance Well shall not exceed 2,500 acre-feet during any calendar year.
3. Diversions during any calendar year under the groundwater rights listed on Exhibit 2 and any additional groundwater rights approved for diversion through the Compact Compliance Wells shall not exceed the total average annual historical consumptive use of the rights, except that banking of groundwater shall be permitted in accordance with the rules and regulations of the Colorado Ground Water Commission, subject to the terms and conditions of this resolution.
4. Diversions from the Compact Compliance Wells shall be measured by totalizing flow meters in compliance with the Colorado State Engineer's rules and regulations for the measurement of groundwater diversions in the Republican River basin, and the measured groundwater pumping from such wells shall be included in the "base" run of the RRCA Groundwater Model in accordance with paragraph III.D.1 of the revised RRCA Accounting Procedures. Net depletions from the Colorado Compact Compliance Wells shall be computed by the RRCA Groundwater Model and included in Colorado's

Computed Beneficial Consumptive Use of groundwater pursuant to paragraph III.D.1 of the revised RRCA Accounting Procedures (See Exhibit 1).

5. Deliveries from the Colorado Compact Compliance Pipeline to the North Fork of the Republican River shall be measured by a Parshall flume or other measuring device located at the outlet structure. Authorized representatives of Kansas and Nebraska shall have the right to inspect the Parshall flume and other measurement devices for the Pipeline at any reasonable time upon notice to the RRWCD WAE.
6. The measured deliveries from the Colorado Compact Compliance Pipeline, to the extent they are in compliance with this resolution, shall offset stream depletions to the North Fork of the Republican River sub-basin on an acre-foot for acre-foot basis in accordance with the revised RRCA Accounting Procedures.
7. Unlike previous temporary approvals, under the plan described herein, the measured deliveries from the Colorado Compact Compliance Pipeline will not be added to the RRCA Groundwater Model. Instead, the Accounting would be performed as shown in the attached Exhibit 1. The measured outflow from the CCP will be called the Colorado North Fork Augmentation Water Supply (CCPAWS). The CCPAWS will be subtracted from the gaged flow at the North Fork Republican River at Colorado-Nebraska state line (USGS Gage 06823000) for purposes of calculating the Virgin Water Supply of the North Fork of Republican River in Colorado sub-basin.
8. The CCPAWS will then be added as a credit to Column 3 (Credits for Imported Water Supply) in Table 3A, 4A, and Table 5A to provide Colorado with a credit against Colorado's CBCU. The column headers in Tables 3A, 4A, and 5A will be modified to reflect that the Augmentation Water Supply is accounted for analogous to Imported Water Supply.
9. Colorado shall determine the Projected Augmentation Water Supply Delivery ("Projected Delivery") to estimate the volume of augmentation water that will be delivered from the Pipeline as provided below, and the RRWCD WAE shall make deliveries from the Pipeline as provided below:
 - A. Colorado will initially estimate the Projected Delivery required for each year based on the largest stream depletions to the North Fork of the Republican River sub-basin during the previous five years without Pipeline deliveries. The RRWCD WAE will begin deliveries from the Colorado Compact Compliance Pipeline each year based on the Projected Delivery and shall make a minimum delivery of 4,000 acre-feet per year as provided below.
 - B. Accounting for deliveries will start January 1.
 - C. The RRWCD WAE will begin deliveries from the Pipeline on or after January 1 and will make the minimum annual delivery of 4,000 acre-feet during the months of January, February, and March, unless such deliveries cannot be made due to operational conditions beyond the control of the RRWCD WAE. If the minimum annual delivery of 4,000 acre-feet cannot be made during the months of January, February and March due to such operational conditions, Colorado will consult with Nebraska and Kansas to schedule such deliveries later in the year.
 - D. Colorado will calculate and provide notice to the Kansas and Nebraska RRCA Members, by April 10, of the Projected Delivery as provided in paragraph 8.A of this resolution. Unless Colorado determines by April 10 that it will not be able to deliver additional required augmentation water in October through December,

Colorado shall stop deliveries at the end of March. If Colorado anticipates that deliveries in the months of November and December will not be sufficient to replace stream depletions to the North Fork of the Republican River for Compact compliance, Colorado will maximize deliveries first in January, then sequentially in the months of February, March, and April. Deliveries will be made in May only if there is reason to believe that additional deliveries in the months of October through December will not be sufficient to replace stream depletions to the North Fork of the Republican River for Compact compliance.

- E. Because the final accounting for determining Compact compliance is not done until after the compact year is completed and because Colorado's allocations and computed beneficial consumptive use are dependent upon such factors as runoff, the amount of pumping, precipitation and crop evapotranspiration, Colorado cannot know the precise amount of augmentation water that will be needed at the beginning of a calendar year. After the initial minimum delivery of 4,000 acre-feet, Colorado will collect preliminary data for Compact accounting for that year and, no later than September 10 of that year, will update the Projected Delivery required for the remainder of the year, less the initial minimum delivery of the 4,000 acre-feet that has already been delivered; but not to exceed the average annual historical consumptive use of the groundwater rights as shown on Exhibit 2.
 - F. After updating the Projected Delivery, as described above, if additional deliveries in excess of the initial delivery of 4,000 acre-feet are necessary to offset projected stream depletions to the North Fork of the Republican River, Colorado and the RRWCD WAE will maximize such additional deliveries first in the month of December, then November and October of that same year. If the total necessary additional deliveries cannot be made within those three months, Colorado will attempt to schedule those deliveries in April and May of the same year, or at such time so as to avoid, to the extent practicable, deliveries during the subject accounting year's irrigation season.
 - G. Colorado's shortage and Projected Delivery will be calculated in accordance with the FSS.
10. Augmentation credit for deliveries from the Pipeline to the North Fork of the Republican River shall be limited to offsetting stream depletions to the North Fork of the Republican River Colorado sub-basin for the purpose of determining Colorado's compliance with the sub-basin non-impairment requirement (Table 4A) and for calculating Colorado's five-year running average allocation and computed beneficial use for determining Compact compliance (Tables 3A and 5A).
 11. The approval of operation of the Pipeline and the related accounting procedures for the Pipeline shall not govern the approval of any future proposed augmentation plan and related accounting procedures submitted by the State of Colorado or any other State under Subsection III.B.1.k of the FSS.
 12. Colorado agrees to collect data related to pumping of Pipeline wells and delivery of water through the outfall structure of the Pipeline on at least a daily basis and provide such data to Kansas and Nebraska on a monthly basis; and by January 30 of each calendar year, will provide all spreadsheets and calculations related to the initial "Projected Delivery" of

augmentation water. Colorado will provide to Kansas and Nebraska all updates to that projection within one week of the completion of any update.

B. Bonny Reservoir

1. The States agree to collaborate between now and December 31, 2017 to develop options to maximize the use of Bonny Reservoir. Any proposed change to the accounting or modeling of Bonny Reservoir will require approval by the RRCA under the terms of the Final Settlement Stipulation.
2. Colorado agrees to work in good faith with the Bureau of Reclamation, Colorado Parks and Wildlife, and Republican River Water Conservation District to maintain the flow of water through Bonny Reservoir during the term of this Resolution.

C. Irrigation in South Fork Republican River basin

1. Utilizing the Conservation Reserve Enhancement Program or other voluntary programs, Colorado agrees to retire up to an additional 25,000 acres from irrigation in the South Fork Republican River basin. Of that amount, Colorado will retire at least 10,000 acres by 2022 and will retire the remaining 15,000 acres by December 31, 2027.
2. In the event Colorado cannot or will not retire 25,000 acres by December 31, 2027, it may submit to the other States for their approval a plan to reduce consumption within Colorado by other means.

D. Water Short Year Accounting

The States agree to collaborate between now and December 31, 2017 on how to resolve the Beaver Creek issue for all water-short years in which accounting has not been finally approved by the RRCA.

E. Use of the Unallocated Supply of the South Fork

The States agree that this Resolution does not affect any State's right to use the Unallocated Supply of the South Fork Republican River or any other sub-basin. Nor should this Resolution be used as evidence of any State's legal position regarding use of the Unallocated Supply and each State hereby reserves all legal arguments concerning their rights to the Unallocated Supply or pertaining to its use.

F. Disputes under this Agreement

The States agree to work in good faith to resolve any disputes over implementation or interpretation of this Agreement, prior to submitting those disputes to arbitration under the terms of the FSS.

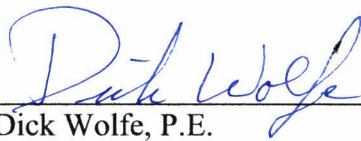
G. Term of Agreement

1. The terms of this Resolution remain in full force and effect until terminated by election of one or more States, which termination occurs on the following conditions:

- a. The terminating State must provide a written Notice of Intent to Terminate to the RRCA not later than October 1st of the year in which a State desires to issue a Notice;
 - b. The terms of the agreement remain in full force and effect through December 31st of the second full year following the RRCA's receipt of a Notice of Intent to Terminate.
2. The States agree in 2024 to review the terms of this Resolution and progress made under its terms.

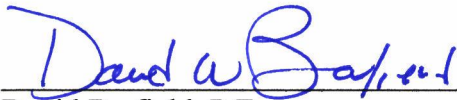
H. Compliance Measure

The RRCA Commissioners hereby agree that compliance with this Resolution constitutes compliance with the Final Settlement Stipulation and Republican River Compact.



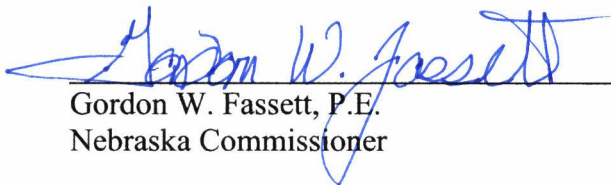
Dick Wolfe, P.E.
Colorado Commissioner
Chairman, RRCA

8/24/16
Date



David Barfield, P.E.
Kansas Commissioner

8/24/16
Date



Gordon W. Fassett, P.E.
Nebraska Commissioner

8/24/16
Date

RESOLUTION APPROVING ACCOUNTING CHANGES

May 25, 2017

Whereas, the States of Kansas, Nebraska, and Colorado (States) entered into a Final Settlement Stipulation (FSS), dated December 15, 2002, to resolve pending litigation in the United States Supreme Court regarding the Republican River Compact (Compact) in the case of *Kansas v. Nebraska and Colorado*, No. 126 Original; and

Whereas, the FSS was approved by the United States Supreme Court on May 19, 2003; and

Whereas, the FSS requires the States to annually approve accounting to determine each State's compliance with the Compact and FSS; and

Whereas, the States have resolved their disagreements that prevented them from approving certain annual accountings in the past; and

Whereas, the States have previously determined and continue to hold that the Compact may be administered in a manner that increases flexibility for all water users, while remaining consistent with the terms of the Compact and the FSS; and

Whereas, on August 24, 2016, the RRCA approved the Resolution Approving Long-Term Agreements Related to the Operation of Harlan County Lake for Compact Call Years, which requires changes to the RRCA Accounting Procedures for its proper implementation; and

Whereas, on August 24, 2016, the RRCA also approved the Resolution Approving Operation and Accounting for the Colorado Compact Compliance Pipeline and Colorado's Compliance Efforts in the South Fork Republican River Basin, in which the States agreed, among other things, to collaborate on how to resolve their disagreement regarding Colorado's allocation on Beaver Creek during water-short years in which accounting has not been finally approved by the RRCA.

NOW THEREFORE BE IT RESOLVED:

1. The RRCA approves and adopts the attached Revised Accounting Procedures Dated: May 25, 2017;
2. The RRCA shall use the Revised Accounting Procedures when it approves accounting for 2007 and every year thereafter.
3. If a state provides Notice of Intent to Terminate the August 24, 2016, Resolution Approving Long-Term Agreements Related to the Operation of Harlan County Lake for Compact Call Years then Nebraska shall not receive Nebraska Resolution Water Supply Credit after December 31 of the second full year following the RRCA's receipt of a Notice of Intent to Terminate, per the Resolution.
4. If a state provides Notice of Intent to Terminate the August 24, 2016, Resolution Approving Operation and Accounting for the Colorado Compact Compliance Pipeline and Colorado's Compliance Efforts in the South Fork Republican River basin, then Colorado shall

not receive Colorado Resolution Water Supply Credit after December 31 of the second full year following the RRCA's receipt of a Notice of Intent to Terminate, per the Resolution.

Dick Wolfe, P.E.
Colorado Commissioner
Chairman, RRCA

Date

David Barfield, P.E.
Kansas Commissioner

Date

Gordon W. Fassett, P.E.
Nebraska Commissioner

Date