

We had a fairly average year of moisture for the 2022 water year, most of the Little Blue and Big Blue basin was around 80-90% of average annual rainfall, although the rain didn't exactly come at the right time. The river stages really fell apart toward the end of July We ended up shutting off the junior irrigators on both the little blue and big blue due to target flows not being met at the state line. Ill break it down a little further and start with the Little Blue basin

Little Blue 1C

Area consists of approximately 2,752 square miles

491 Active Natural FLOW (IR) water rights

142 Active Storage Right

Closed on July 25 (64 days total)

142 storage rights

124 natural flow junior rights

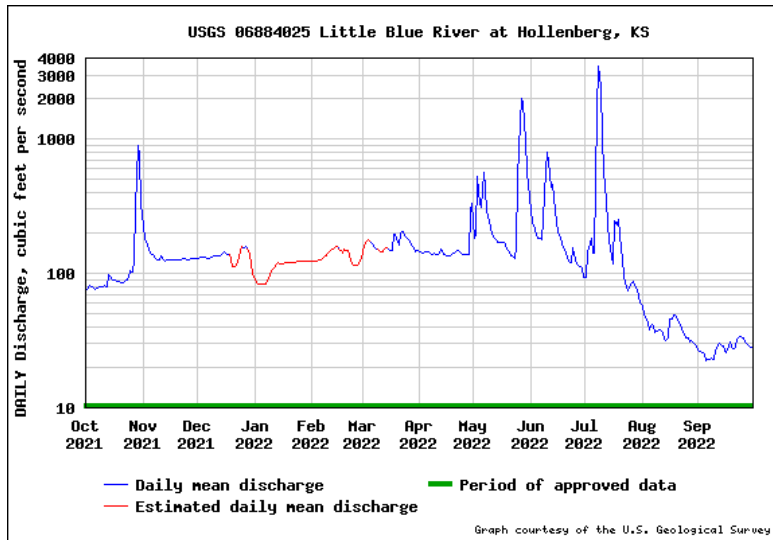
Opened on July 27

Closed on 8/1

Reopened on 10/1 due to end of compact/ beginning of water year

The WY 2022 Annual mean was 178.1cfs, and the average since 1974 is 484.2cfs. Throughout the course of the summer we documented 292 field observations on the Little Blue River Basin and found 134 pump sites set up. We used fuji meters to measure the flow each time we found a pump running and issued a pump schedule for the senior appropriators. We did not document each site visit once we had already visited a water right. We checked just about every water right in this basin once or twice a week in august and most of September

SUMMARY STATISTICS				
	Water Year 2022		Water Years 1974 - 2022	
Annual total	65,000			
Annual mean	178.1		484.2	
Highest annual mean			1,891	1993
Lowest annual mean			172.9	2006
Highest daily mean	3,480	Jul 08	39,300	Jul 26, 1992
Lowest daily mean	22.6	Sep 05	22.6	Sep 05, 2022
Annual 7-day minimum	23.6	Sep 03	23.6	Sep 03, 2022
Maximum peak flow	4,230	Jul 08	59,200	May 07, 2015
Maximum peak stage	7.46	Jul 08	23.07	Oct 12, 1973
Annual runoff (cfsm)	0.065		0.175	
Annual runoff (inches)	0.878		2.38	
10 percent exceeds	242.8		802.0	
50 percent exceeds	130.0		188.0	
90 percent exceeds	33.1		96.0	



Big Blue 1-D

Area consists of approximately 4,447 square miles

Currently 1088 Active Natural Flow water rights

384 active Storage Rights

Closed 8/8 (18 days total)

384 storage permits

405 natural flow junior permits

8/18 opened up everything

8/29 closed

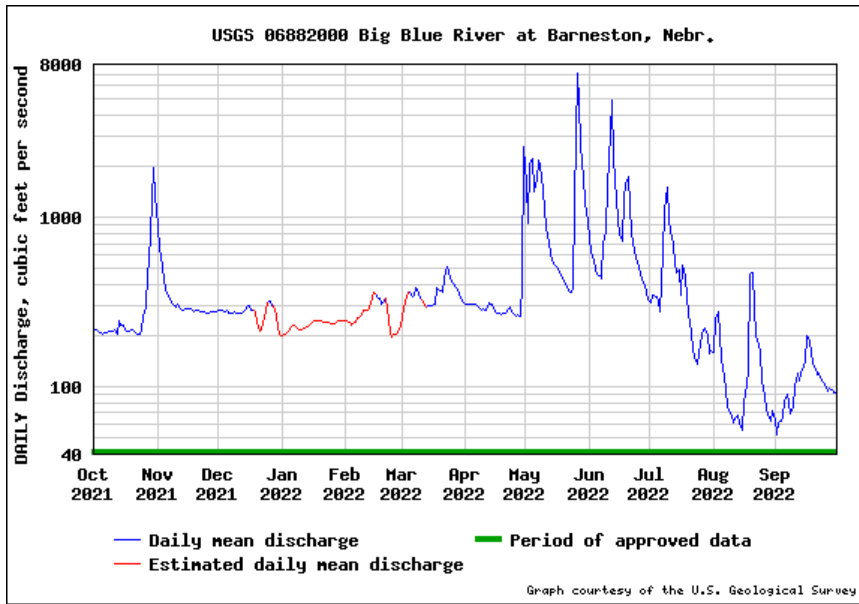
9/6 opened up everything

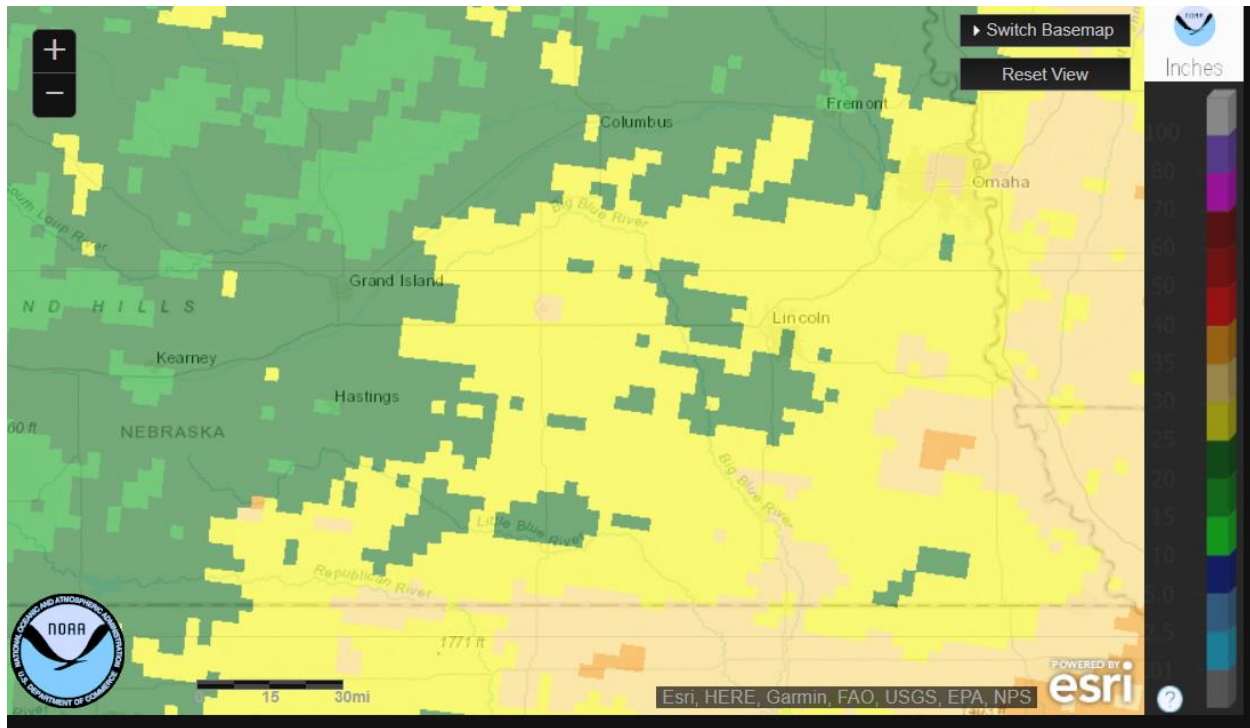
WY 2022 Annual Mean was 439.9 cfs, average from 1933-2022 is 855.6cfs. Throughout the course of the summer we documented 945 field observations on the Little Blue River Basin and found 405 pump sites set up. Just like in the Little Blue Basin we measured the intake of the irrigation system and issued pump schedules to all senior irrigators and did our best to come back and check to make sure they were being compliant.

SUMMARY STATISTICS

	Water Year 2022		Water Years 1933 - 2022	
Annual total	160,600			
Annual mean	439.9		855.6	
Highest annual mean			2,781	1993
Lowest annual mean			115.0	1934
Highest daily mean	7,030	May 26	50,000	Jun 09, 1941
Lowest daily mean	52.0	Sep 01	1.00	Nov 30, 1945
Annual 7-day minimum	62.9	Aug 29	15.1	Aug 03, 1934
Maximum peak flow	7,930	May 26	57,700	Jun 09, 1941
Maximum peak stage	13.51	May 26	34.30 ^a	Jun 09, 1941
Annual runoff (cfsm)	0.099		0.192	
Annual runoff (inches)	1.34		2.61	
10 percent exceeds	842.6		1,750	
50 percent exceeds	280.0		288.0	
90 percent exceeds	109.0		110.0	

^a Gage height at different site and(or) datum





	A	B	C	D
1	Year	2022		
2				
3	Row Labels	Count of Obsen	Sum of Total Acres	Count of Is Pumpsite Set Up?
4	1C: Little Blue River	292	18316.97	134
5	IR: Irrigation from Natural Stream	289	18051.77	132
6	SI: Supplemental Irrigation (irrig. from reservoir on lands also covered by a n	1	160.8	1
7	SO: Stor-only (irrigation from a reservoir on lands not covered by a natural fl	2	104.4	1
8	1D: Big Blue River	945	59862.81	405
9	DO: Domestic	7	7.4	
10	IR: Irrigation from Natural Stream	865	54321.11	368
11	SI: Supplemental Irrigation (irrig. from reservoir on lands also covered by a n	24	1562.6	14
12	SO: Stor-only (irrigation from a reservoir on lands not covered by a natural fl	49	3971.7	23
13	Grand Total	1237	78179.78	539
14				
15				