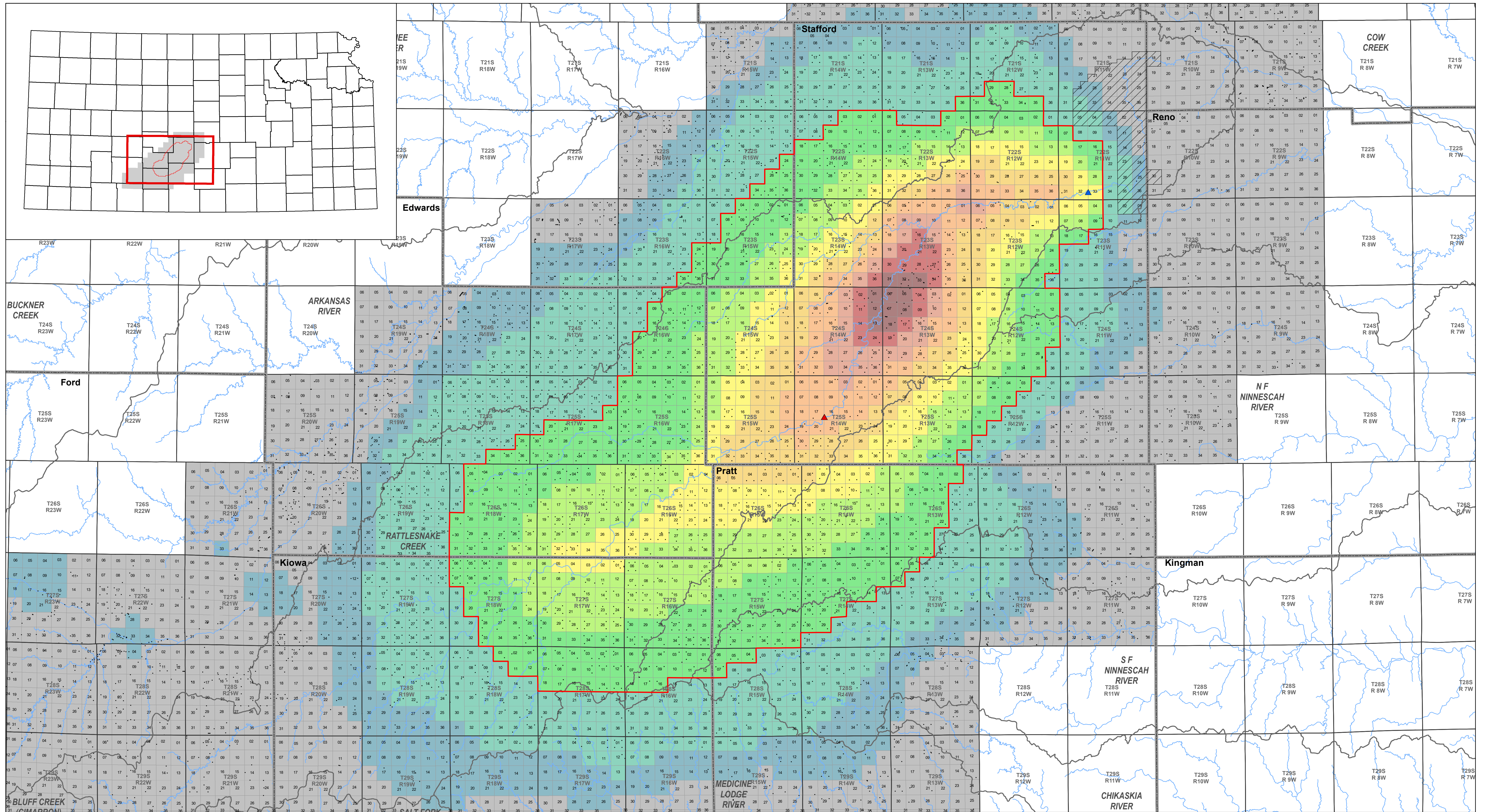


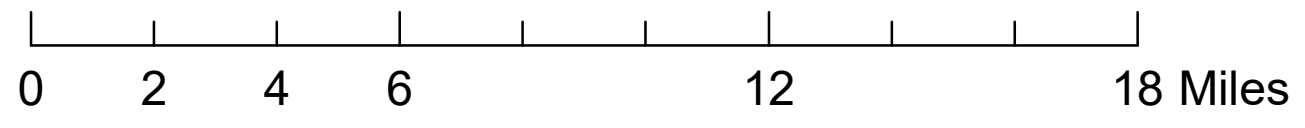
Rattlesnake Creek Streamflow Response Regions, Draft

1998 - 2007 average streamflow response (pct) at Zenith gage evaluated in 110 townships and 823 sections and kriged to 3,960 sections in and near Rattlesnake Creek basin and groundwater points of diversion junior to Quivira



Stream Response (Percent)

- | | | | | |
|-------------|-------------|-------------|--------------------|--------------------|
| 80.1 - 90.0 | 40.1 - 50.0 | 3.1 - 10.0 | Zone A | Point of Diversion |
| 70.1 - 80.0 | 30.1 - 40.0 | 1.1 - 3.0 | Quivira | Major Streams |
| 60.1 - 70.0 | 20.1 - 30.0 | 1.0 or Less | Zenith Station | Basins |
| 50.1 - 60.0 | 10.1 - 20.0 | | Macksville Station | |



Disclaimer - Features on this map represent conditions as of the date of the map and are subject to change.