

# KANSAS FLOODPLAIN MANAGEMENT TIPS



October 2015

## Kansas Association for Floodplain Management Conference

The Kansas Association for Floodplain Management (KAFM) held the annual conference on September 2nd and 3rd in Kansas City. On September 4th the Certified Floodplain Manager exam was given as a post conference activity.

The conference location and hotel was the Great Wolf Lodge. The conference opened with a lunch buffet on Wednesday. On Wednesday evening there was a dinner at the Hollywood Casino at Kansas Speedway sponsored by AMEC Foster Wheeler. Great food and great opportunities for networking were a big part of the conference again this year.

The opportunity for training was even greater than the opportunity for networking. Here is a list of seminar titles from the conference: NFIP Vision Update, Safe Rooms, NPDES Outreach and CRS, Using maps without ESRI, Public and Areas of Mitigation Interest, Kansas Seismic Activity Update, Federal Action to Reduce Flood Risk, NFIP Insurance Update, Floodplain 101, CRS 101, HEC-RAS 5.0, 50 Year Water Plan, LiDAR Acquisition, Mitigating Flood Risk and Floodplain Mapping Community Resiliency. Plenary session speakers were George Riedel from the Association of State Floodplain Managers Foundation, Sam Riley Medlock on President's Environmental Council spoke on Federal Actions to Reduce Flood Risk and our NFIP Bureau and Statistical Agent, Ally Bishop, gave an update on the National Flood Insurance Program.

First photo shows Tom Morey with speaker Sam Riley Medlock. Second photo shows Ally Bishop.

### In this bulletin...

- KAFM Conference
- Flood Elevations
- KSLs Credit for CFM
- Flood Videos
- Announcements
- Learning Opportunities
- Training Registration Form



## Flood Elevations for Letters of Map Change

The Federal Emergency Management Agency (FEMA) has contracted with an engineering firm to do reviews of Letters of Map Amendment (LOMA) and Letters of Map Review. The reviewers have recently clarified their requirements for the use of data to calculate a base flood elevation. Different situations will require different data for review.

In areas where the Flood Insurance Rate Map (FIRM) has detailed study in an AE zone with cross sections there should not be any questions. Use the Flood Insurance Study (FIS) to calculate a BFE.

The Kansas Department of Agriculture (KDA) Division of Water Resources (DWR) has a website where data can be found. The floodplain mapping website is <http://agriculture.ks.gov/divisions-programs/dwr/floodplain/mapping>. Data exists for some areas that are unnumbered Zone A on a recent FIRM. This data exists in about a third of all of the counties in Kansas. When a surveyor or engineer uses the DWR website there are a couple of requirements. Print out the screen shot from the website. The DWR print out will show a disclaimer in the lower corner that will alert the reviewers that this data came from State of Kansas. Make at least one screen shot wide enough to show cross sections upstream and downstream of the property.

Screenshot from website

This is also an acceptable method for communities where a new map is preliminary. This method can be used as best available data in situations where the current map is an unnumbered A zone. It can't be used in areas where the current map has detailed study. At the time of this article Saline County and Sedgwick County would be examples of this type of situation.

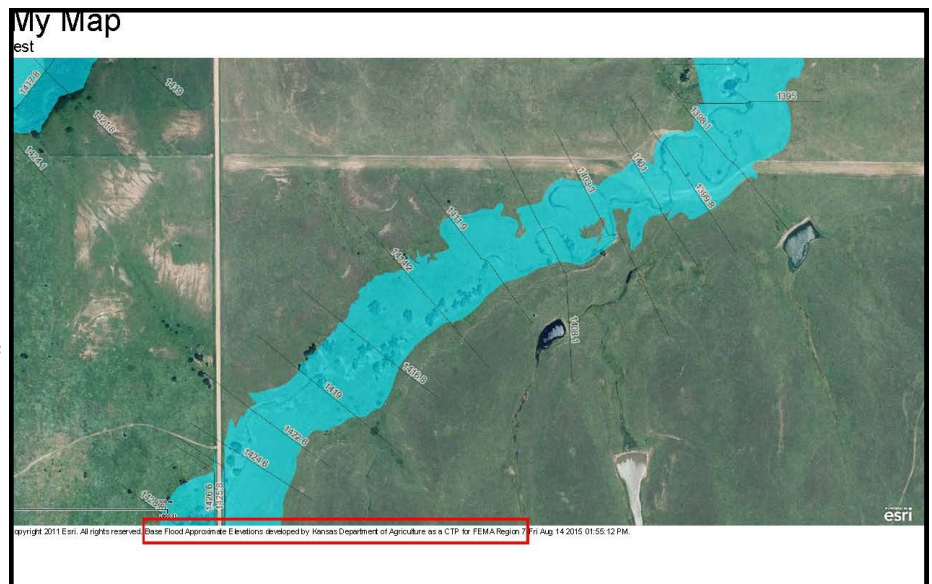
There are areas where the mapping data isn't available. An example is Ottawa County. For those areas a LOMA form can be submitted without a BFE. Leave it blank on the form.

Reviewers will calculate a BFE for free on their end. In the case you disagree with the BFE that the review comes back with the option exists to hire an engineer.

For some areas the best option may be to work with the United States Army Corps of Engineers (USACE) and paying a fee to have the USACE calculate a BFE. In places where LiDAR exists the staff at DWR can help calculate a BFE. When getting assistance from DWR or USACE submit a copy of the letter from the agency with the request for a LOMA. Reviewers will accept documents from a State or Federal Agency.

You are also able to calculate a base flood elevation using any acceptable scientific method. Methods are described in FEMA publication, "Managing Floodplain Development in Approximate Zone A Areas, A Guide for Obtaining and Developing Base Flood Elevation". Be prepared to show your work or provide the modeling you developed when you are determining a BFE on your own. Reviewers would like to have copies of this information for their own files when approving LOMAs and LOMRs.

Contact DWR staff in the Topeka field office in case you have questions: Tom Morey at 785-296-5440 or Steve Samuelson at 785-296-4622.



## **Kansas Society of Land Surveyors Offers Training and Credit Hours**

The Kansas Society of Land Surveyors (KSLS) has two upcoming conference events that have been approved for continued education credit hours by the Association of State Floodplain Managers (ASFPM). Many of the surveyors in State of Kansas are also Certified Floodplain Managers (CFM) and can use these credit hours.

The 58th annual meeting of KSLS will be in El Dorado from October 23rd to October 25, 2015th. This year's conference meeting will include sessions on roads and highways, railroads, real estate and elevation certificates. A vendor social with barbecue and beer will be held at the Kansas Oil Museum. Find out more by visiting <http://www.ksls.com/Resources/Documents/2015%20Annual%20Meeting%20Brochure.pdf> .

The Salina Seminar Series will be held in Salina From January 7th to January 9th, 2016. There will be numerous seminar sessions in three different breakout sessions. Topics will include but not be limited to ethics and standards, tree identification, business management, coordinate geometry, easements, unmanned aerial systems, railroad right of way and elevation certificates. Registration for this event will open on October 24th. For more information visit the website <http://www.salinaseminarseries.com/> .

The KSLS has also collaborated with GeoLearn to provide on line continuing education for its members. Ernie Cantu, President of KSLS said, "The creation of this online learning portal for Kansas surveyors is part of the society's plan to be more relevant to its members in today's web-based world, and to provide richer, more diverse content on a 24/7 basis anywhere an Internet connection is available." Visit [www.ksls.com](http://www.ksls.com) and click on GeoLearn under the education tab. These on line courses have not been approved for CFM credits yet.

Floodplain Managers in local communities may want to attend a KSLS conference. It will offer a chance to network with surveyors who work in their communities, have training on issues related to floodplain management and also get CFM continued education credits.

## **Floodplain Management Videos**

The State of Iowa National Flood Insurance Program Coordinator worked with Iowa State University to create a set of videos about floodplain management. One set of videos has been scrubbed of Iowa specific content so that it will be appropriate for any one. You will find the videos at this link.

<http://www.extension.iastate.edu/floodingandnfiip/content/flooding-and-national-flood-insurance-program>

The videos cover the topics of Introduction to the National Flood Insurance Program (NFIP), Understanding Flooding, Floodplain Mapping, Floodplain Regulation and Flood Insurance. Each topic is broken up in to a few short videos. Most of the videos are about 5 minutes long with some a little longer and some a little shorter. You can easily watch a short video in your spare time at your desk in this way. Come back and watch more videos as you have time.

There are a total of 20 of the short videos. Each video has excellent information that is well presented. These videos are an excellent way for people to learn about floodplain management without leaving their office and at a time that they can set for themselves. Some of the videos on flood mapping would be good to use in a community that is getting a new flood map. Video 20 is about the Community Rating System (CRS). A good video to have linked on a community website when the community has applied for CRS.

The videos discuss the basic requirements for floodplain management that apply anywhere. State of Kansas has some specific requirements to keep in mind as you view these videos. Before issuing a floodplain development permit in Kansas local communities should call the Kansas Department of Agriculture/Division of Water Resources in Manhattan at 785-564-6650 to inquire if a State permit is required first. State of Kansas also requires one foot of freeboard for residential and non-residential buildings.

## **Training Opportunities**

The Floodplain Management Program will host the following training sessions throughout Kansas. If you are interested in any of the no-cost training opportunities, please contact Tom Morey at 785-296-5440 or Steve Samuelson at 785-296-4622. A training registration form is in this newsletter.

### **Post Flood Responsibilities**

This free class is intended for community officials responsible for administering floodplain management regulations. The course focuses on what to do during and after a disaster event. Topics include substantial damage, permitting, Increased Cost of Compliance and violations. Approved 3.5 hours toward CFM. Limited to 20 participants.

- McPherson - Dec. 10, 2015 8:30 a.m.-12:30 p.m.

### **Violations and Enforcement in the Floodplain**

This free class is intended for community officials responsible for enforcing floodplain management regulations. The course will focus on various types of violations, how to correct violations and enforcement procedures. Approved 3.0 hours toward CFM. Limited to 20 participants.

- Hutchinson– Jan. 13, 2016 9:00 a.m.-12:30 p.m.

### **Basics of the National Flood Insurance Program**

This class is for officials responsible for administering their local floodplain management ordinance. The focus is on the National Flood Insurance Program (NFIP) and concepts of floodplain management, maps and studies, ordinance administration, and the relationship between floodplain management and flood insurance. Approved 3.5 hours toward CFM. Limited to 20 participants.

- Wichita - Oct. 29, 2015 8:30 a.m.-12:30 p.m.
- Garnett - Dec. 1, 2015 8:30 a.m.-12:30 p.m.

Find more information about floodplain management from Kansas Department of Agriculture  
Division of Water Resources on line at:  
<http://agriculture.ks.gov/divisions-programs/dwr/floodplain>

Email saves money on postage. The electronic newsletter also has links and the photos are in color. If you are getting this newsletter by postal mail and would prefer email please contact Steve Samuelson at [steve.samuelson@kda.ks.gov](mailto:steve.samuelson@kda.ks.gov).

Mark your calendar. The Kansas Association for Floodplain Management 2016 conference will be September 7 and 8 in Mulvane. More information will be posted at the website: [www.kafm.org](http://www.kafm.org). Registration will be done through a link on the website. If you have questions about registration please contact Don Slone, Chairman, at 913-667-1708.



**Kansas Department of Agriculture**  
**Division of Water Resources**  
**Floodplain Program**  
**Training Registration Form**

Name \_\_\_\_\_

\_\_\_\_\_

Title \_\_\_\_\_

Organization \_\_\_\_\_

Address \_\_\_\_\_

City \_\_\_\_\_ State \_\_\_\_\_ Zip \_\_\_\_\_

Telephone \_\_\_\_\_ Fax \_\_\_\_\_

E-mail \_\_\_\_\_

Name, date and location of training you will attend \_\_\_\_\_

\_\_\_\_\_

\_\_\_\_\_

\*Please share this invitation with anyone else who could benefit from the training.

\*\*Classroom locations will be sent to registered participants one week before the training.

Please mail or fax your registration to:

KANSAS DEPARTMENT OF AGRICULTURE  
FLOODPLAIN MANAGEMENT PROGRAM  
6531 SE Forbes Ave., Suite B  
TOPEKA, KS 66619  
Fax to: 785-296-7155

For questions about training, please contact Steve Samuelson by email at [steve.samuelson@kda.ks.gov](mailto:steve.samuelson@kda.ks.gov) or by phone 785-296-4622, or contact Tom Morey at [tom.morey@kda.ks.gov](mailto:tom.morey@kda.ks.gov) and 785-296-5440.

Please help us keep our records current. If the name that appears on this newsletter is for an individual no longer with your organization, please call 785-296-4622, or email [steve.samuelson@kda.ks.gov](mailto:steve.samuelson@kda.ks.gov) to report the change.

046-17  
Kansas Department of Agriculture  
Division of Water Resources  
Topeka Field Office  
Floodplain Management  
6531 SE Forbes Ave., Suite B  
Topeka, KS 66619

### **ASFPM 2016 National Conference in Grand Rapids**

The 2016 Association of State Floodplain Managers National Conference will be June 19-24, 2016 in Grand Rapids, Michigan This conference is an excellent opportunity for floodplain managers to receive training on mapping technologies, regulations, permitting, outreach and best practices. It is estimated the conference will be attended by more than 1,200 floodplain management professionals. This conference is great chance to meet people for networking and to learn the latest news in floodplain management.

### **KDA/DWR Water Structures Floodplain Program Staff**

Tom Morey, CFM, RS, NFIP Coordinator	785-296-5440	<a href="mailto:tom.morey@kda.ks.gov">tom.morey@kda.ks.gov</a>
Tara Lanzrath, CFM, Floodplain Mapping Specialist	785-296-2513	<a href="mailto:tara.lanzrath@kda.ks.gov">tara.lanzrath@kda.ks.gov</a>
Steve Samuelson, CFM, NFIP Specialist	785-296-4622	<a href="mailto:steve.samuelson@kda.ks.gov">steve.samuelson@kda.ks.gov</a>
Dane Bailey, CFM, Floodplain Mapping Coordinator	785-296-7769	<a href="mailto:dane.bailey@kda.ks.gov">dane.bailey@kda.ks.gov</a>

Mailing Address:  
6531 SE Forbes Ave., Suite B  
Topeka, KS 66619  
Fax: (785) 862-9110

<http://agriculture.ks.gov/dwr>