

## MINUTES OF THE STATE CONSERVATION COMMISSION

1. The State Conservation Commission meeting was called to order by Rod Vorhees, Chairman and Area V Commissioner at 10:52 a.m., Monday, August 2, 2010 at the Comfort Inn Suites, Pratt, Kansas.

2. **ATTENDANCE:**

**Elected Commissioners:**

Ted Nighswonger, Area I Commissioner  
Andy Larson, Area II Commissioner  
Brad Shogren, Area III Commissioner  
John Wunder, Area IV Commissioner, Vice-Chairman  
Rod Vorhees, Area V Commissioner, Chairman

**Ex-Officio & Appointed Members:**

Matt Scherer, KDA, Division of Water Resources  
Eric Banks, USDA, Natural Resources Conservation Service  
Phil Barnes, Associate Professor, Water Quality, Biological & Agricultural Engineering,  
Kansas State University, Research & Extension

**Staff:**

Greg Foley, Executive Director  
Scott Carlson, Assistant Director

**Guest:**

None.

3. **ADDITIONS/CORRECTIONS TO AND APPROVAL OF AGENDA:**

**Additions:** 8.c. Out of State Travel.

8.f. Financial Report approval.

8.g. Training Endorsement (Statewide)

**Motion by Andy Larson to approve the agenda as amended. Seconded by Ted Nighswonger. Motion carried.**

## SCC MEETING MINUTES

August 2, 2010

Page 2

### 4. MINUTES OF THE PREVIOUS MEETING:

- a. Approval of the May 24, 2010 meeting minutes.

**Motion by Ted Nighswonger to approve the May 24, 2010 minutes as mailed. Seconded by John Wunder. Motion carried.**

### 5. COMMENTS FROM GUESTS: None.

### 6. COMMUNICATIONS AND ANNOUNCEMENTS:

- a. Dennis Baker retirement/Mined Land Reclamation Program staffing – Greg Foley.
- b. Letter from Jackson County, Cost-Share issue.

### 7. UNFINISHED BUSINESS:

- a. The next regular Commission meeting is scheduled for September 13, 2010 at the Holiday Inn Express in Hutchinson or a conference call as determined by the Commission.

**Motion by Andy Larson to hold the September 13, 2010 meeting at the Holiday Inn Express in Hutchinson. Seconded by Ted Nighswonger. Motion carried.**

### 8. NEW BUSINESS:

- a. Approval of up to \$900.00 as the SCC contribution to the conservation partnership booth at the 2010 State Fair in Hutchinson, Kansas September 10 -19, 2010 – Greg Foley.

**Motion by John Wunder to approve a contribution of one-third the cost of the conservation partnership booth at the State Fair in Hutchinson, Kansas September 10 – 19, 2010 not to exceed \$900.00. Seconded by Brad Shogren. Motion carried.**

- b. Update on Fiscal Year 2012 budget – Greg Foley.
- c. Out-of-State travel approval for Scott Carlson – Greg Foley.
  - i. Attendance at the National Association of State Conservation Agencies (NASCA) Annual meeting in Durango, Colorado, August 29 – September 2, 2010.

## SCC MEETING MINUTES

August 2, 2010

Page 3

**Motion by Brad Shogren to approve Scott Carlson attending the National Association of State Conservation Agencies Annual meeting in Durango, Colorado, August 29 – September 2, 2010. Seconded by Andy Larson. Motion carried.**

- ii. Attendance at the National Association of State Land Reclamationists (NASLR) in Carbondale, Illinois, September 12 – 14, 2010 – Greg Foley.

**Motion by Ted Nighswonger to approve Scott Carlson attending the National Association of State Land Reclamationist (NASLR) in Carbondale, Illinois, September 12 – 14, 2010. Seconded by Andy Larson. Motion carried.**

- d. Update on Kansas Water Authority Directives – Greg Foley.
- e. Update on status of Water Related Agency Consolidation Audit – Phase II – Greg Foley.
- f. Financial Report – Greg Foley. See Attachment A.

**Motion by Andy Larson to approve the financial report as presented. Seconded by Ted Nighswonger. Motion carried.**

- g. Training Endorsement – Statewide – Greg Foley.

**Motion by Ted Nighswonger to direct SCC staff to develop training tools to adequately address Conservation District Supervisor training which meets recommended National Association of Conservation Districts (NACD) and National Association of State Conservation Agencies (NASCA) standards. Seconded by Brad Shogren. Motion carried.**

- h. Review and take action to pursue additional funding from the Kansas Water Pollution Control Revolving Loan Fund (KWPCRF) – Greg Foley. See Attachment B.

**Motion by Brad Shogren to direct SCC staff to pursue the Kansas Water Pollution Control Revolving Loan Fund (KWPCRF) for additional resources to implement pollution control measures in Kansas. Seconded by Andy Larson. Motion carried.**

### 9. REPORTS:

- a. Agency Reports:
  - i. Natural Resources Conservation Service – Eric Banks. See Attachment C.

**SCC MEETING MINUTES**

**August 2, 2010**

**Page 4**

**b. Staff Reports:**

- i. Private Dam Rehabilitation Program – Greg Foley.**

**Motion by Ted Nighswonger to approve SCC staff to develop a Private Dam Rehabilitation Program and move proposal to the Kansas Legislature for consideration. Seconded by Andy Larson. Motion carried.**

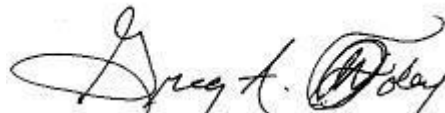
- ii. Update on the National Watershed Coalition Operation and Maintenance Workshop – Scott Carlson. See Attachment D.**

**c. Commissioner Reports:**

- i. Legislation on water marketing – streambank initiative – Brad Shogren, Area III.**

**10. ADJOURN.**

**Motion by Andy Larson to adjourn. Seconded by Brad Shogren. Motion carried. Meeting adjourned at 12:55 p.m.**



Greg A. Foley,  
Executive Director

**STATE CONSERVATION COMMISSION - FY 2010 QUARTERLY FINANCIAL REPORT**  
**JULY 1, 2009 THROUGH JUNE 30, 2010**

	PROGRAM/FUND	INDEX	Appropriation/ Allocation	Total Expenditures	% of Funds Expended	Funds		% of Committed Funds	Uncommitted Balance
						Committed/			
						Encumbered-Contingent			
<b>1.</b>	<b>STATE GENERAL FUND - 1000</b>								
*	a. Office Operations	1010	742,474.86	742,474.86	100.0%	0.00	0.0%	0.00	
	b. Hospitality Fund	1014	1,500.00	1,497.95	99.9%	0.00	0.0%	2.05	
	<b>TOTAL - STATE GENERAL FUND</b>		<b>743,974.86</b>	<b>743,972.81</b>	<b>100.0%</b>	<b>0.00</b>	<b>0.0%</b>	<b>2.05</b>	
<b>2.</b>	<b>STATE WATER PLAN FUND - 1800</b>	1200							
*	a. Water Resources Cost-Share								
	(1) CSIMS Cost-Share Assistance		2,535,446.55	1,360,476.92	53.7%	0.00	0.0%	1,174,969.63	
	(2) Office Operations		0.00	0.00	0.0%	0.00	0.0%	0.00	
	<b>WR - TOTAL</b>		<b>2,535,446.55</b>	<b>1,360,476.92</b>	<b>53.7%</b>	<b>0.00</b>	<b>0.0%</b>	<b>1,174,969.63</b>	
*	b. Water Resources TA - TSP Employees	1205	10,338.38	10,338.38	100.0%	0.00	0.0%	0.00	
*	c. Non Point Source Pollution Control	1210							
	(1) CSIMS Cost-Share Assistance		1,948,785.43	1,291,853.62	66.3%	0.00	0.0%	656,931.81	
	(2) Office Operations		12,292.68	12,292.68	100.0%	0.00	0.0%	0.00	
	(3) NPS/TA-Conservation Districts		443,593.95	443,593.95	100.0%	0.00	0.0%	0.00	
	(4) NPS/TA-No Till Conservation Districts		8,455.00	8,455.00	100.0%	0.00	0.0%	0.00	
	(5) NPS/TA-Wildhorse Riverworks Inc		39,660.00	0.00	0.0%	39,660.00	0.0%	0.00	
	<b>NPS - TOTAL</b>		<b>2,452,787.06</b>	<b>1,756,195.25</b>	<b>71.6%</b>	<b>39,660.00</b>	<b>1.6%</b>	<b>656,931.81</b>	
*	d. WTAP	1215							
	(1) WTAP Projects		11,805.30	0.00	0.0%	0.00	0.0%	11,805.30	
	(2) Office Operations		88,032.00	85,409.27	97.0%	0.00	0.0%	2,622.73	
	<b>WTAP - TOTAL</b>		<b>99,837.30</b>	<b>85,409.27</b>	<b>85.5%</b>	<b>0.00</b>	<b>0.0%</b>	<b>14,428.03</b>	
	e. Aid to Conservation Districts	1220	2,266,961.75	2,266,905.00	100.0%	0.00	0.0%	56.75	
	f. Conservation Reserve Enh Prog (CREP)	1225							
	(1) CSIMS Cost-Share Assistance		1,113,584.32	93,916.70	8.4%	0.00	0.0%	1,019,667.62	
	(2) Reserve		0.00	0.00	0.0%	0.00	0.0%	0.00	
	<b>CREP - TOTAL</b>		<b>1,113,584.32</b>	<b>93,916.70</b>	<b>8.4%</b>	<b>0.00</b>	<b>0.0%</b>	<b>1,019,667.62</b>	
*	g. Watershed Dam Construction	1240							
	(1) Watershed Dam Cost-Share Assistance		414,262.00	110,721.99	26.7%	302,415.94	73.0%	1,124.07	
	(2) Inundation Mapping (NOT FUNDED THIS FY)		0.00	0.00	0.0%	0.00	0.0%	0.00	
	(3) Rehabilitation		226,892.00	0.00	0.0%	226,892.00	0.0%	0.00	
	(4) Reserve		35,543.04	0.00	0.0%	0.00	0.0%	35,543.04	
	<b>1240 - WATERSHED PROGRAM - SUB-TOTAL</b>	<b>1240</b>	<b>676,697.04</b>	<b>110,721.99</b>	<b>0.27</b>	<b>529,307.94</b>	<b>0.73</b>	<b>36,667.11</b>	
	(5) Watershed Dam Cost-Share Assistance	1245	50,000.00	6,010.03	12.0%	43,989.97	88.0%	0.00	
	<b>WATERSHED PROGRAM - TOTAL</b>		<b>726,697.04</b>	<b>116,732.02</b>	<b>16.1%</b>	<b>573,297.91</b>	<b>78.9%</b>	<b>36,667.11</b>	
*	h. KS Water Quality Buffer Initiative-CSIMS Projects	1250	312,162.52	268,745.17	86.1%	0.00	0.0%	43,417.35	
*	i. KS Water Quality Buffer Initiative-Coordinators(TA)	1255	0.13	0.00	0.0%	0.00	0.0%	0.13	

\*FY 2010 ADJUSTMENT

**STATE CONSERVATION COMMISSION - FY 2010 QUARTERLY FINANCIAL REPORT**  
**JULY 1, 2009 THROUGH JUNE 30, 2010**

PROGRAM/FUND	INDEX	Appropriation/ Allocation	Total Expenditures	% of Funds Expended	Funds		% of Committed Funds	Uncommitted Balance
					Committed/			
					Encumbered-Contigent			
* j. Riparian and Wetland Protection	1260							
(1) CSIMS-Demonstration Projects		58,421.57	11,592.00	19.8%	0.00	0.0%	46,829.57	
(2) Office Operations		8,492.68	8,492.68	0.0%	0.00	0.0%	0.00	
(3) Trailer Maintenance-Conservation Districts		551.73	551.73	0.0%	0.00	0.0%	0.00	
(4) RW/TA-Glacial Hills RC&D		100,000.00	43,595.00	43.6%	56,405.00	56.4%	0.00	
(5) RW/TA-Wildhorse Riverworks Inc		19,900.00	0.00	0.0%	19,900.00	0.0%	0.00	
<b>RW - TOTAL</b>		<b>187,365.98</b>	<b>64,231.41</b>	<b>34.3%</b>	<b>76,305.00</b>	<b>40.7%</b>	<b>46,829.57</b>	
* k. Water Supply Restoration Program	1275	0.00	0.00	0.0%	0.00	0.0%	0.00	
<b>TOTAL - STATE WATER PLAN FUND</b>		<b>\$9,705,181.03</b>	<b>\$6,022,950.12</b>	<b>62.1%</b>	<b>\$689,262.91</b>	<b>7.1%</b>	<b>\$2,992,968.00</b>	

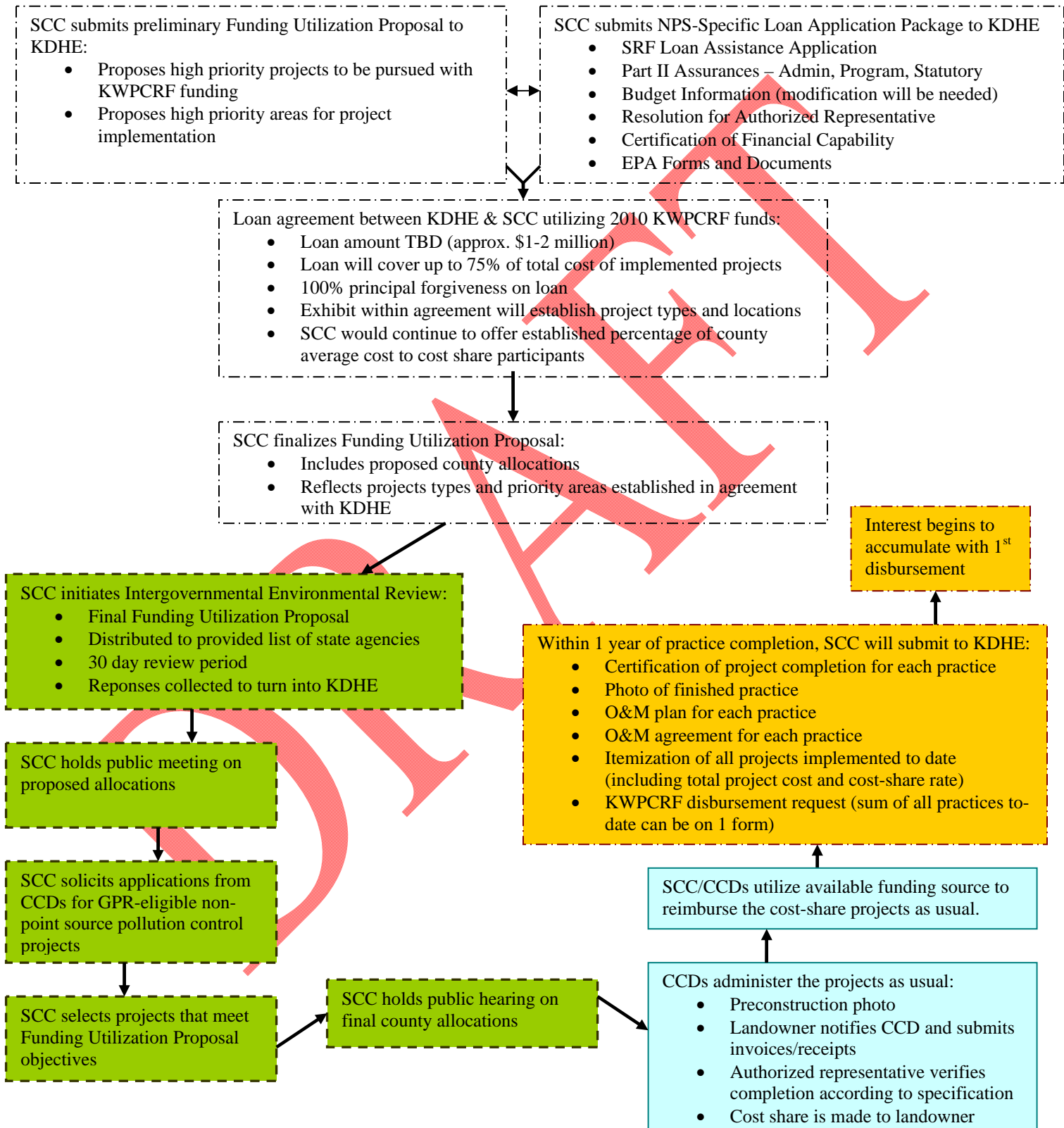
\*FY 2010 ADJUSTMENT

CASH CONTROL FUNDS PROGRAM	INDEX	Fee Deposit Accounts	Total Expenditures	% of Funds Expended	Funds		% of Committed Funds	Cash Flow
					Committed/			
					Encumbered-Contigent			
1. LAND RECLAMATION FEE FUND - 2542								
a. Office Operations	2100	263,189.56	150,543.85	57.2%	110.89	0.0%	112,534.82	
b. American Express Credit Card Fund - 9453	9400	1,884.68	1,628.12	86.4%	0.00	0.0%	256.56	
Fee fund only expenditures are transfers to LR and credit card monthly fees.								
2. KDWP-Buffer Partnership - 2517	2510	150,000.00	132,671.38	88.4%	0.00	0.0%	17,328.62	
3. KDHE/EPA - FEDERAL FUNDS - 3915		(ON THIS ACCOUNT-MONEY IS DEPOSITED AS REPORTS ARE SUBMITTED TO KDHE)						
a. Buffer Partnership (67600)	3730	269,166.85	175,903.52	65.4%	1,085.00	23.0%	93,263.33	
b. NPS/WRAPS (67400)	3730	39,936.00	39,266.05	98.3%	669.95	23.0%	669.95	
<b>TOTAL- FEDERAL FUNDS - 3915</b>		<b>309,102.85</b>	<b>215,169.57</b>	<b>69.6%</b>	<b>1,754.95</b>	<b>0.0%</b>	<b>93,933.28</b>	
4. NRCS CONTRIBUTION AGREEMENTS - 3715		(ON THIS ACCOUNT-MONEY IS DEPOSITED AS REQUESTED FROM NRCS)						
a. Contribution Agreement Employees, Salaries & Travel	3800	10,279.96	10,279.96	100.0%	0.00	0.0%	0.00	
b. CD Operations and Indirect	3810	24,218.03	24,218.03	100.0%	0.00	0.0%	0.00	
c. Water Quality Projects, Personnel and Indirect	3820	75,674.97	59,974.34	79.3%	48,328.50	0.0%	15,700.63	
<b>TOTAL- NRCS FUNDS - 3917</b>		<b>110,172.96</b>	<b>94,472.33</b>	<b>85.7%</b>	<b>48,328.50</b>	<b>0.0%</b>	<b>15,700.63</b>	
COOPERATIVE AGREEMENT COMPLETED								
5. CONVERSION FUND - 2429	2000	1,965.75	0.00	0.0%	0.00	0.0%	1,965.75	
6. PARKING DEDUCTION CLEARING FUND	9234	4,578.86	4,105.50	89.7%	0.00	0.0%	473.36	
7. MOTOR VEHICLE FUND - 6118	6000	37,435.91	8,991.43	24.0%	250.00	0.7%	28,444.48	
<b>TOTAL - CASH FLOW</b>								<b>\$270,637.50</b>

# 2010 KWPCRF

## Non-Point Source Pollution Control Practices

### Proposed Loan Process with the State Conservation Commission



## Kansas Water Pollution Control Revolving Fund

### Proposed Non-Point Source Projects

- I. Agricultural Practices or Expenses:**
  - a. Bioengineered Streambank Stabilization [Categorical, 1.2-7; longitudinal stone toe protection and rock veins may require business case]
  - b. Channel Bank Vegetation [Categorical, 1.2-7]
  - c. Conservation Cover [Categorical within floodplain, 1.2-7]
  - d. Constructed Wetlands [Categorical, 1.2-1 and 1.2-8]
  - e. Critical Area Planting [Categorical within floodplain, 1.2-7 and 1.2-9]
  - f. Fencing (business case required)
  - g. Native Vegetation [Categorical within floodplain, 1.2-7 and 1.2-9]
  - h. Riparian Forest Buffers [Categorical, 1.2-7]
  - i. Riparian Herbaceous Buffers [Categorical, 1.2-7]
  - j. Stream Crossings (business case required)
  - k. Tree/Shrub Establishment [Categorical within floodplain, 1.2-7 and 1.2-9]
  - l. Vegetated Treatment Areas [Categorical within floodplain, 1.2-7 and 1.2-9]
  - m. Vegetated Buffers [Categorical, 1.2-7]
  - n. Wetland Enhancement or Restoration [Categorical, 1.2-7 and 1.2-8]
  
- II. Decentralized Wastewater Treatment Systems**
  - a. Upgrade failing systems [Categorical, 4.2-6]
  - b. Replace failing systems [Categorical, 4.2-6]
  
- III. Urban Stormwater Management Projects [all listed are categorical]**
  - a. Bioretention cells
  - b. Combined Sewer Overflow Disconnection
  - c. Constructed Wetlands
  - d. Downspout Disconnection
  - e. Green Roofs
  - f. Irrigation from Harvested Runoff
  - g. Native Vegetation Installation
  - h. Permeable Pavement and Pavers
  - i. Rain Gardens
  - j. Stormwater Harvesting (utilizing cisterns or rain barrel network)
  - k. Tree Box Expansion
  - l. Vegetated Swales (that utilize native vegetation rather than turf grass)





Natural Resources Conservation Service  
760 South Broadway  
Salina, Kansas 67401-4604

Phone: 785-823-4500  
FAX: 785-823-4540  
www.ks.nrcs.usda.gov

---

**NRCS HIGHLIGHTS OF ACTIVITIES  
for the  
JOINT MEETING  
KANSAS ASSOCIATION OF CONSERVATION DISTRICTS  
AND  
STATE CONSERVATION COMMISSION**

**PRATT, KANSAS  
AUGUST 2, 2010**

**PERSONNEL**

- New Hires:** Kevin B. Arnet, Soil Conservationist, Hugoton  
Craig T. Ogden, Soil Conservation Technician, Hugoton  
Brodie J. Poe, Soil Conservation Technician, Sharon Springs  
Steven M. Ramsey, Agricultural Economist, Salina  
David W. Snyder, RC&D Coordinator, Lakin
- Promotions:** Joní Y. Franklin, Natural Resources Manager, Salina to Resource Conservationist  
Jon L. Ungerer, Resource Conservationist, Salina to State Resource Conservationist
- Reassignments:** Patrick J. Broyles, Soil Conservationist, Emporia to USDA Foreign Agricultural Service  
Peter A. Clark, Agricultural Engineer, Hutchinson to Agricultural Engineer, Salina  
Thomas D. Cochran, Soil Survey Project Leader, Dighton to Soil Survey Leader, Garden City  
Kyla A. Copple, Soil Conservationist, Mound City (Student Trainee Soil Conservationist, Burlington)  
Victoria J. Estrada, Civil Engineer, Manhattan (Student Trainee Engineer, Emporia)  
Sara A. Fredrickson, District Conservationist, Liberal to District Conservationist, Topeka  
Martin W. Gugelman, Engineering Technician (Civil), Scott City from Curtis, Nebraska  
James P. Henry, Soil Conservation Technician, Council Grove to Engineering Technician (Civil), Manhattan  
Thomas F. McGuire, RC&D Coordinator, Emporia from Potosi, Missouri  
Lucinda (Cindy) S. Mullen, Soil Conservation Technician, Council Grove from Hardinsburg, Kentucky  
Amber D. Sanko, Soil Conservationist, Jetmore from Sterling, Colorado

*75 Years—A Legacy to Conservation  
Helping People Help the Land*

Kyle G. Schwindt, Soil Conservation Technician, Sharon Springs  
to Jetmore  
Daniel E. Wood, Soil Scientist, Salina to Soil Scientist, Garden City

Reinstatement: Cynthia S. Lucas, Office Assistant for the Water Resources Staff,  
Salina

Retirement: Donald W. Jantzen, Soil Conservationist, La Crosse

## **OPERATIONS**

A Memorandum of Understanding was developed and signed by the State Conservation Commission (SCC), the Kansas Department of Wildlife and Parks (KDWP), the Kansas Department of Health and Environment (KDHE), the Kansas Forest Service, Playa Lakes Joint Venture, Pheasants Forever (PF), Quail Forever, the Kansas Association of Conservation Districts, and the Natural Resources Conservation Service (NRCS) to cooperatively work together to fund additional technical assistance positions in NRCS management units in Kansas. This overarching memorandum provides the foundation for the partners to develop funding agreements to meet this need, regardless who the partners are, while ensuring the focus remains constant.

The Cooperative Agreement with the SCC for ten soil conservation technician positions has been completed. The positions have been advertised, interviews are being conducted this week and next, and it is anticipated these employees will be on board by August 1. The towns where the technicians will be located are: Columbus, Emporia, Eureka, Greensburg, Independence, Leoti, Lyndon, Marysville, Salina, and Westmoreland. The technicians will be used throughout the management unit where they are located to assist with conservation practice planning and application on all USDA and conservation district programs. Funding for this agreement is coming from the SCC, KDWP, KDHE, and NRCS.

The Cooperative Agreement with PF has been implemented with three PF biologists on board (Beloit, Medicine Lodge, and Seneca). Positions have been advertised in Oberlin and Ulysses with hopes of having them on board in August. NRCS is providing a portion of salaries, office space, computers, and some vehicle use for all of these employees.

In a separate agreement between PF and KDWP, PF biologist positions in Abilene, Winfield, and Ness City will be advertised in the near future, with those employees coming on board in September. NRCS is providing office space, computers, and some vehicle use for these employees only.

The Cooperative Agreement with the SCC and others for buffer coordinators will continue in six management units--Hiawatha (Brown), Effingham (Atchison), Paola (Miami), Burlington (Coffey), Iola (Allen), and Marion (Marion).

Other Cooperative Agreements for technical assistance that continue to be implemented include Kansas Alliance for Wetland and Streams for a technician assisting in selling the Wetlands Reserve Program (WRP) and wetland programs in western Kansas out of Scott City, Kansas Livestock Association for a conservationist located in Ellsworth assisting with the Grassland Reserve Program (GRP) and Farm and Ranch Lands Protection Program (FRPP) easements, KDWP for biologist assistance in each of our area and technical support offices, and KDWP for Wildlife Habitat Incentives Program (WHIP) technical assistance throughout the state.

Use of these agreements has allowed the NRCS to bring on 26 employees plus additional KDWP assistance to provide WHIP and biologist technical assistance for a fraction of the cost of permanent NRCS employees by leveraging partner funds. This also allows the NRCS more flexibility as budgets fall and rise from year to year.

NRCS has contracted for part-time positions to provide program contract administrative assistance in eleven management units in the state. The contract is with Ultima. They have been providing the same kind of assistance in several others states and have an excellent track record.

A contract has been awarded to Sustainable Environmental Solutions Inc. (SES) to complete the Natural Resources Inventory (NRI) on 95 range sites in Kansas. SES has completed NRI data collection in Kansas before; however, NRCS rangeland management specialists been conducting the inventory for the last several years.

All contract and partner employees are "1619 certified" and are required to accept the same personal identifiable information (PII) standards as NRCS employees.

## **PROGRAMS**

### Agricultural Water Enhancement Program (AWEP)

Kansas had three proposals accepted nationally for AWEP. Approved proposals were:

- Equus Beds Groundwater Management District (GMD) No.2 - \$1,135,000 – To address groundwater resource concerns; specifically, inefficient water use on irrigated land and aquifer overdraft
- Northwest Kansas GMD No. 4 - \$2,666,666 – To slow the rate of water table decline in specific subunits and extend economic life of the aquifer
- Big Bend GMD No. 5 - \$572,844 – Reduce water use

AWEP proposals designate priority areas to be treated. Ranking criteria and eligible practices are recommended by the partner. The financial assistance agreements are between NRCS and the participant, similar to EQIP.

### Lesser Prairie-Chicken Initiative (LEPC)

Kansas is included in a multi-state, special project that provides landowners the opportunity to retain the cover established through the Conservation Reserve Program (CRP) by assisting them with conversion of this cover to managed grazing land. To help achieve this purpose, financial assistance will be provided for the needed conservation practices. In addition, financial assistance will be offered to establish and maintain permanent vegetation benefitting the LEPC on cropland fields adjoining these areas.

### Conservation Stewardship Program (CSP)

Currently we are in the process of ranking the eligible applications received by the ranking period cutoff. There were 567 applications received. The applications are a mixture of nonindustrial private forestland and agricultural land.

### Environmental Quality Incentives Program (EQIP)

As of June 30, Kansas had received \$22,174,853 in EQIP financial assistance. An additional \$3,000,000 was received in June specifically for the Ogallala Aquifer region to address water conservation concerns and \$250,000 was received to address LEPC habitat concerns. So far in Fiscal Year (FY) 2010, we have funded 840 EQIP contracts for \$20,518,767.

We will begin preparation on the FY 2011 program in August with a KTC subcommittee meeting.

### American Recovery and Reinvestment Act (ARRA) Stimulus Package

Work continues on completion of watershed projects funded under the ARRA. We have four watershed projects that received funding:

- Lyons Creek Site 15 – (New Construction) Morris County
- Switzler Creek Site 7 – (Rehabilitation) Osage County
- Big Caney Site 18 – (Remedial) Cowley County
- Wet Walnut Site 53 – (Remedial) Ness County

Malm Construction was awarded the contract on Lyons Creek and construction started on March 9 and is proceeding on schedule. Construction is anticipated to be completed on this site by September 30, 2010.

The Finding of No Significant Impact (FONSI) and the Environmental Assessment have on Switzler Creek Site 7 have been posted on the Kansas NRCS Web site. The U.S. Army Corps of Engineers permit and the Kansas Department of Health and Environment storm water permit have been received for Switzler Creek. Division of Water Resources permit has been requested. Final design has been completed. Construction funds are expected to be obligated in FY 2010 with construction expected to be completed in FY 2011.

Construction of the remedial work on Wet Walnut Site 53 has been completed.

TP Environmental and Pipeline Services was awarded the contract on the Big Caney Site 18 remedial repair project and construction has started. Construction should be completed by September 30, 2010.

The three Kansas ARRA enrollments in the Emergency Watershed Protection – Floodplain Easement (EWPP-FPE) program have been acquired. These permanent easements have been recorded at the respective courthouse. The acres and county location of the three approved sites are:

- Doniphan County – 564 acres
- Labette County – 48 acres
- Rice County – 223 acres

EWPP-FPE easement restoration has been completed on two of the three easements with all remaining restoration to be completed by December 31, 2010.

### Farm and Ranch Lands Protection Program (FRPP)

Work continues for closing on three FY 2008 conservation easement parcels and one FY 2009 parcel. Two new cooperative agreements have been approved for FY 2010 for acquisition of two new parcels on a total of 5,561 acres.

### Grassland Reserve Program (GRP)

Kansas received 36 applications for the Grassland Reserve Program easements and 73 applications for rental agreements during the FY 2010 sign-up period. We received sufficient dollars to fully fund 19 perpetual easements on over 12,000 acres. NRCS will soon be making easement purchase offers to these landowners.

### Wetlands Reserve Program (WRP)

Thirty-eight applications have been received since the beginning of FY 2010 offering 5,617 acres for enrollment into WRP. Easements have been recorded on eleven WRP enrollments since the beginning of FY 2010 on approximately 1,800 acres. Fifteen offers have been made for new enrollments for FY 2010 on 2657 acres. Offers are made to landowners based on the current approved WRP 2010 Geographic Area Rate Cap for counties. These rates may be found at the Kansas NRCS Web site under the Programs tab Wetlands Reserve Program.

### Watershed Operations

The State Association of Kansas Watersheds and the National Watershed Coalition in cooperation with NRCS will be holding a nationally sponsored Operation and Maintenance (O&M) training workshop on July 27-28, in Jackson County, Kansas. This training session is targeted to watershed dam sponsors and state and federal agency staff who have watershed dam O&M responsibilities. The first day will be classroom training relating to O&M policy and procedure, legal issues, and sponsor responsibilities. The second day will consist of completing an O&M inspection checklist in the field on a watershed dam and demonstrations and exhibits featuring tools to assist sponsors with O&M responsibilities.

## **TECHNOLOGY**

On June 7, NRCS conducted a training session for the Kansas Forest Service (KFS). Training included review of programs, conservation planning, technology development, and review of the cooperative agreement between NRCS and KFS.

We are managing our agreement with the SCC and their contractors, The Watershed Institute (TWI) and Wildhorse Riverworks, Inc., to get streambank projects designed and built. Construction has been completed on four projects the past two months with eight additional projects in various states of construction. High water in the rivers continues to delay the survey and design of several projects. The hope was to complete the surveys in the spring and start the designs. However, spring and summer rains have disrupted the schedule.

The design of another group of 15 2008/2009 Environmental Quality Incentives Program (EQIP) streambank protection projects has been awarded by the SCC. The survey of these projects should begin this summer.

We continue to work with architect and engineer (A&E) firms to provide design and construction assistance for conservation practices. EA Engineering, Science & Technology, Inc. of Lincoln, Nebraska, has been issued their second task order, and we are in the process of issuing a task order to KLA Environmental Services of Salina, Kansas. Both task orders are for designs of animal waste management systems.

## **OTHER**

### National Resources Inventory (NRI)

Due to the heavy workload issues, we have contracted with SES Inc. of Lenexa, Kansas to collect the Kansas data for the Grazing Lands On-Site Study. SES Inc. has a team of highly qualified personnel that will be collecting the data across the state. They have collected data for us in the past and have performed exceptional work. Their data collectors will start the Kansas Grazing Lands On-Site data collection later in the month of July.

The 2007 National Resources Inventory has been released. Kansas data has been posted to our Web site. You can view the Kansas data summary at the following web address:

[http://www.ks.nrcs.usda.gov/technical/ks\\_nri](http://www.ks.nrcs.usda.gov/technical/ks_nri). One of the most basic trends revealed by the data is the continued conversion of prime farmland to urban and build-up. Approximately 348,000 acres of rural land in Kansas has been converted to urban and build-up since 1982. Most of this land conversion comes from our cropland base. You might also want to view the National summary which available at the following web address:  
<http://www.nrcs.usda.gov/technical/NRI/>.

### Outreach

Women in Agriculture –Two local meetings were held in Doniphan and Atchison counties during June. Over 160 women attended the meetings. Partners were Farm Service Agency, Natural Resources Conservation Service, Extension Service, Farm Bureau, conservation districts. Marylyn Bell, Lincoln, Kansas, spoke of her experiences “Tips from the Trenches” as a woman farmer after her husband was killed in a car accident.

75th Anniversary – Exhibit about to open at the Smoky Hill Museum, Salina. Eric was interviewed by Dave Kendall for a program to air this fall on Sunflower Journeys.

Kansas State Fair – Theme will be 75th anniversary. Kansas Conservation Partnership (NRCS, Kansas Association of Conservation Districts, and State Conservation Commission) will sponsor booth and with workers from conservation districts and NRCS

Kansas State Fair – Soil Guys will again provide informational and educational program on soils for three days at the fair for kids, teachers, and others.

Nicodemus Homecoming – NRCS, Farm Service Agency, Risk Management Agency, and Rural Development jointly sponsored a booth for Outreach on July 31 so visitors to the Homecoming could ask questions about the Conservation Reserve Program, Farm Bill and others programs as pertained to each agency. Many of those attending the homecoming are absentee landowners.

Pollinator Workshop, Butterfly Count, and Pollinator Short Course – The Manhattan Plant Materials Center (PMC) hosted a pollinator workshop in June with speaker Dr. Chip Taylor, Kansas University and Founder of Monarch Watch.

On July 14, the PMC was host to a butterfly count with 10 volunteers assisting. The PMC partnered with the Konza Prairie to do a butterfly ID workshop on July 8, to assist volunteers in the butterfly count.

On September 2, Xerces Society will provide a Pollinator Short Course at the PMC.

## **National Watershed Coalition Operation and Maintenance Workshop**

SCC along with NRCS, SAKW and DWR participated in a two-day National Watershed Coalition Operation and Maintenance Workshop, titled: Kansas O&M Workshop - Sponsor Responsibility 101 Workshop.

The Workshop which was held at the Prairie Band Resort, Mayetta, Kansas, on July 27 and 28, 2010, was an excellent opportunity to hear knowledgeable speakers, learn new skills, and interact with others who have similar responsibilities or duties.

### **The Workshop Topics included:**

- Improving Structure Operation and Maintenance
- Watershed Project Sponsor Responsibilities
- Easement Defense and Enforcement
- Getting the Most for Your O&M Dollars, Maintenance Tips and Tricks
- Introduction to Rehabilitation of Aging Dams and Local Sponsors Actions
- Introduction to Emergency Action Plans
- Rehabilitation vs. Maintenance
- Tour of Local Watershed Project
- O&M Demonstration Field Day
- Products, Tools and Techniques for O&M
- Weed and woody plant control, wildlife damage management...