



1320 Research Park Drive
Manhattan, Kansas 66502

MINUTES OF THE STATE CONSERVATION COMMISSION

1. The State Conservation Commission meeting was called to order by Rod Vorhees, Chairman and Area V Commissioner, at 8:07 a.m., Monday, April 25, 2016, at the Kansas Department of Agriculture, 1320 Research Park Drive, Manhattan, Kansas.

2. **ATTENDANCE:**

Elected Commissioners:

Ted Nighswonger, Area I Commissioner
Andy Larson, Area II Commissioner
Brad Shogren, Area III Commissioner
John Wunder, Area IV Commissioner
Rod Vorhees, Area V Commissioner

Ex-Officio & Appointed Members:

Dan Devlin, Director, Kansas Center for Agricultural Resources and the Environment (KCARE), K-State Research and Extension
Peter Tomlinson, Ph.D., Associate Professor, Extension Specialist for Environmental Quality Agronomy Department, Kansas State University (KSU)
Terry Medley, P.E., Water Structures Program Manager, Division of Water Resources, Kansas Department of Agriculture

Division of Conservation, Kansas Department of Agriculture Staff:

Rob Reschke, Executive Director
Don Jones, Water Quality Program Manager
Hakim Saadi, Watershed Program Manager
Katie Burke, Conservation District Program Coordinator
Cathy Thompson, Program Consultant
Cindy Woofter, Administrative Specialist
Andy Klein, Water Quality Forester, Kansas Forest Service

Guests:

Jim Krueger, Executive Director, Kansas Association of Conservation Districts
Herb Graves, Executive Director, State Association of Kansas Watershed (SAKW)

3. **ADDITIONS/CORRECTIONS TO AND APPROVAL OF AGENDA:**

SCC MEETING MINUTES

April 25, 2016

Page 2

ADDITIONS:

- k. Review proposed Kansas/Colorado Arkansas River RCPP Proposal.
- l. Update on irrigation soil probe demonstration project.

A motion was made by Ted Nighswonger to approve the agenda as amended. The motion was seconded by Andy Larson. Motion carried.

4. MINUTES OF THE PREVIOUS MEETING:

A motion was made by Brad Shogren to approve the March 14, 2016, minutes as mailed. The motion was seconded by Ted Nighswonger. Motion carried.

5. COMMENTS FROM GUESTS:

Jim Krueger, KACD, reported that he is reworking the convention setup to hopefully improve participation and increase attendance. Tentatively the general session will be Monday morning with a keynote speaker with committee meetings following. He is working on speakers for the breakout sessions. Monday night will be area meetings and entertainment. A press release will be sent out soon for the Leopold Award.

Stephanie Royer, KACD-EO, was not present but gave her report to Jim to present. Dates for Area EO meetings are as follows (see Attachment A):

Area I - June 14-15

Area II - June 22

Area III - ?

Area IV – May 9-10

Area V – sometime in June

Herb Graves, SAKW – Herb mentioned that it was good working with the partnerships at the O&M Workshops.

6. FINANCIAL REPORT:

Cathy Thompson gave the financial report (Attachment B). Don said the goal is to keep the carry-forward balances as low as possible.

Rob plans on working with Fiscal Department on what our obligations are with the Land Reclamation funds to make sure they are used correctly. It has been an educational process making sure all departments involved know what the funds are to be used for. He is diligently working on a solution for this problem. Cathy devised a spreadsheet of all open PO's. Steve and Cathy will be tracking funds very closely.

SCC MEETING MINUTES

April 25, 2016

Page 3

7. COMMUNICATIONS AND ANNOUNCEMENTS:

- a. Labette County – new District Manager – Lori Sears
- b. McPherson County – new District Manager – Susan Buffington
- c. Sheridan County – new District Manager – DeeAnn Schamberger
- d. Rawlins County – Heather Fairchild last day May 20 – new District Manager Amber Barnes
- e. Smith County new District Manager – Marsha Kugler

8. UNFINISHED BUSINESS:

- a. Summary of 2016 Spring Workshops – Reschke (see Attachment C)
 - i. Rob reported that participants at the Spring Workshops were very engaged and that the breakout sessions appeared to be successful. He felt it was encouraging to see participation and seriousness. He was informed that Districts would like to have information more directly involved with their location.

Jim Krueger added that at the Fall meetings they will be offering Resolution Training.

John said his area had a very good workshop, that it is important to have an open line of communication, and that all have a voice and their opinion matters.

Rod – need to have meetings to continue progress.

- b. Legislative Update and Review of FY 2017 Budget – Reschke (see Attachment D)
 - i. Rod mentioned that the SCC would like more detailed financial reports.
- c. Review Future SCC Meeting Dates and Joint Meeting Plans - Reschke (see Attachment E)
 - i. Rob updated the Board that KDA is now going to have joint board meetings in an effort to bring communication and coordination to all KDA boards. Dates * below are the new joint board meetings.

Rod said SCC should be supportive of these new meetings and it's a great idea to have them; all need to capitalize on all resources available within the KDA.

- i. SCC Meeting Dates.
 - a. 2017 Easter Is On April 16
 - b. 2017 Mother's Day Is On May 14

A motion was made by Ted Nighswonger to add and change meeting dates as outline below. The motion was seconded by Peter Tomlinson. Motion carried.

SCC MEETING MINUTES

April 25, 2016

Page 4

August 8, 2016
September 15, 2016 *
November 20, 2016
December 16, 2016 *
February 13, 2017
April 10, 2017
May 15, 2017

Note: Calendar provided with holidays to assist in selection of dates by Commissioners (see Attachment E).

9. Update on 2016 SCC/KACD Joint Meeting hosted by Area II KACD Board Member.

Dates are August 7-9. Jim Krueger said there will be a BBQ and a tour at Bill's house on August 7. The joint meeting will be August 8, and the spring workshop will be discussed August 9.

BREAK from 9:23 a.m. to 9:43 a.m.

10. NEW BUSINESS:

- a. Review prior year FY 2014 and FY 2015 cost-share encumbrance and cancellation policy recommendations – Jones.
 - Extend all FY 2014 LWM encumbered cost-share contracts in the Non-Point Source Pollution Control Program (NPS) until December 1, 2016.
 - Extend all FY 2015 encumbered cost-share contracts in the Non-Point Source Pollution Control Program (NPS) until December 1, 2016.
 - Extend all FY 2015 encumbered cost-share contracts in the Water Resources Cost-share Program (WR) until December 1, 2016.

A motion was made by Brad Shogren to approve the FY 2014 and FY 2015 cost-share encumbrance policy recommendations. The motion was seconded by John Wunder. Motion carried.

- b. Review current year FY 2016 cost-share encumbrance policy recommendations - Jones.
 - i. Program Encumbrance
 - Non-Point Source Pollution Control Program (NPS)
 - All On-site Wastewater System (OSW) and Abandoned Water Well Plugging (AWP) contracts will expire on June 1, 2016. Encumber all other FY 2016 NPS cost-share contracts that have not been completed until June 1, 2017, except for Livestock Waste System contracts, which will be encumbered until June 1, 2018.

SCC MEETING MINUTES

April 25, 2016

Page 5

- Riparian and Wetland Protection Program (RWPP)
 - Encumber all FY 2016 RWPP contracts until June 1, 2018.
- Watershed Dam Construction Program (WDCP)
 - Encumber all FY 2016 WDCP contracts until June 1, 2018.
- Water Resources Cost-Share Program (WR)
 - Encumber all FY 2016 WR cost-share contracts that have not been completed until June 1, 2017.
- Engineering Contracts in the Non-Point Source Pollution Control Program (NPS) and Riparian and Wetland Protection Program (RWPP)
 - Encumber all FY 2016 engineering contracts in the NPS and RWPP programs until June 1, 2018.

A motion was made by John Wunder to approve the FY 2016 cost-share encumbrance policy recommendations. The motion was seconded by Ted Nighswonger. Motion carried.

- c. Review FY 2017 WRCS, NPSPC program policy revisions – Jones (see Attachment F).

A motion was made by Brad Shogren to approve the FY 2017 WRCS, NPSPCP Program policy revisions. The motion was seconded by Andy Larson. Motion carried.

- d. Determine FY 2017 cost-share cancellation/reallocation policy - Jones.

- Cancel all uncommitted FY 2017 cost-share funds in the Non-Point Source Pollution Control Program (NPS) on December 2, 2016, and reallocate to Livestock Waste System applications, applications in targeted TMDL watersheds, and Streambank Protection projects.
- Cancel all uncommitted FY 2017 cost-share funds in the Water Resources Cost-share Program (WR) on December 2, 2016. First priority for reallocation would be to applications in targeted TMDL watersheds. Second priority would be to reallocate statewide.

A motion was made by Andy Larson to approve the FY 2017 cost-share cancellation/reallocation policy recommendations. The motion was seconded by Ted Nighswonger. Motion carried.

- e. Review FY 2017 Water Resources Cost-Share program allocation scenarios and county allocations – Jones (see Attachment G).

SCC MEETING MINUTES

April 25, 2016

Page 6

A motion was made by Brad Shogren to approve the WRCSP FY 2017 cost-share fund allocation recommendations and county specific allocations. The motion was seconded by Ted Nighswonger. Motion carried.

- f. Review FY 2017 Non-Point Source Pollution Control Cost-Share program allocation scenarios and county allocations. – Jones (see Attachment H).

A motion was made by Ted Nighswonger to approve the NPSPCP FY 2017 cost-share fund allocation recommendations and county specific allocations. The motion was seconded by Brad Shogren. Motion carried.

- g. Review FY 2017 Watershed Dam Construction applications for funding – Saadi (see Attachment I).

BREAK from 10:45 a.m. to 11:00 a.m.

- h. Discuss luncheon speaker choices for the SCC luncheon at the 2016 KACD Convention - Reschke.
 - i. After much discussion, it was decided upon that instead of having one speaker in particular for the luncheon, the DOC will provide a presentation with the partners in regards to promoting what Conservation Districts are doing and the endless possibilities of what can be accomplished. Prior to the Convention, feedback and information will be obtained from Districts statewide and information will be compiled for the conference attendees to take home in hopes of inspiring and encouraging Districts to try new activities.
- j. Review KSU Poultry Litter Storage Research Project entitled “Effectiveness of short-term poultry litter storage options for protecting Kansas water quality” and possible extension of project – Tomlinson (see Attachment J).

Peter Tomlinson abstained from voting on this issue.

A motion was made by Brad Shogren to approve the extension of KSU Poultry Litter Storage Research Project in the amount of \$80,000.00. The motion was seconded by Ted Nighswonger. Motion carried.

- k. Review Commissioner(s) and Staff Travel.

National Association of State Land Reclamationists in Bozeman, Montana – *September* – Scott

Northern Regional meeting of National Association of State Conservation Agencies meeting in Des Moines, Iowa - *April* - Rob

National Association of State Conservation Agencies Annual Meeting, Missouri – *September* – Rob, Steve, Katie

Association of State Dam Safety Officials annual conference, Philadelphia – *September* – Hakim

SCC MEETING MINUTES

April 25, 2016

Page 7

- l. Don Jones reviewed the proposed Kansas/Colorado Arkansas River RCPP Proposal – Jones (see Attachment K).
 - i. Most of the work is being done in Colorado (\$8 million to Colorado, \$2 million to Kansas).

A motion was made by Ted Nighswonger to approve the designation of Water Resources and NPS TMDL cost-share funds in the amount of \$100,000 per year during FY 2018 – FY 2023 to provide cost-share assistance to landowners in the proposed KS/CO Arkansas River RCPP Project area, if said project proposal application is approved by NRCS. The motion was seconded by Andy Larson. Motion carried.

- m. Don Jones gave an update on the irrigation soil probe demonstration project – Jones.
 - i. He mentioned that they are finishing up the third year of this project. Johnathon Aguilar is doing this project, and Don recommended having him give a presentation on the project at the joint meeting in August.

A motion was made by Brad Shogren to fund no more than \$9,000 with K-State Research and Extension for the third year of the irrigation soil probe demonstration project in Meade and Seward counties. The motion was seconded by Ted Nighswonger. Motion carried.

LUNCH BREAK 11:57 a.m. to 12:45 p.m.

11. REPORTS:

- a. Agency Reports:
 - i. K-CARE – Dan Devlin – Dan reported that there have been issues regarding burning in the Flint Hills. Many controlled fires have turned into uncontrolled fires, due partly to the uniqueness of the dry and windy spring. He has also received many calls from Nebraska due to the smoke from the fires.
 - ii. K-State Agronomy – Peter Tomlinson – Peter stated that he will visit with Greg Hadley about the possibility of adding K-State Extension to the Partnership Agreement. There is a Great Plains Grazing Meeting in Stillwater, Oklahoma, in mid-June.
 - iii. KDA – Terry Medley – Terry reported that there were three O & M workshops sponsored by DOC, SAKW, DWR, and NRCS in April and he attended one of them. DWR is in the process of applying for a federal safety grant.
 - iv. NRCS – Eric Banks was not present but provided a report of NRCS highlights (see Attachment L).
- b. Staff Reports:

SCC MEETING MINUTES

April 25, 2016

Page 8

- i. Rob Reschke – DOC – Staff changes include Don Jones retiring (last day is June 17) and Megan Green will be leaving on or around June 10, 2016. He attended the Blue Ribbon Task Force meeting in which the DOC was mentioned once and Conservation Districts zero times. That is a concern and indicates that people are uneducated in conservation – conservation and Districts need to be promoted (see Attachment M). May 6 is the next RAC meeting; RAC would like to be a pilot and is looking for existing sources of funding (see Attachment N).
 - ii. Hakim Saadi – DOC – Hakim attended the three O&M Workshops which had over 100 people in attendance and were very successful workshops. He also stated that the rehabilitation of 14 sites has been approved.
 - iii. Don Jones – DOC – Don is retiring and his last day of employment with the DOC will be June 17, 2016. He has been busy working with others in the DOC to make sure all his duties are covered.
 - iv. Katie Burke – DOC – Katie reported that there were two local partnership meetings held to discuss new programs. She's been working close with Andy Klein, KFS, on buffer contracts. The streambank goals are to set up assessment plans for old projects and maintenance plans for new projects.
 - v. Cindy Woofter - DOC – Cindy has been working closely with Scott and Murali on the Land Reclamation database obtaining necessary information and revising forms. Ag lime testing is under way and certificates are printed and sent out. Cindy has also been going through the DOC website doing many updates.
 - vi. Cathy Thompson – DOC – Cathy attended the State Envirothon, which was very interesting, and has assisted with the Land Reclamation data base. She is working with Don on closing out FY 2016 and starting up FY 2017.
 - vii. Andy Klein – KFS – Andy has been very involved in smoke management due to all the burning in the Flint Hills. He has been working with Katie on streambank projects; 23 of the 24 buffers have been planted so far this year. Andy stated that he is very grateful for his conservation experience as it ties in closely with his current job in working with Conservation Districts, landowners, and contractors.
- c. Commissioner reports:
- i. Area I – Ted Nighswonger – Ted mentioned that they've had some good rains in his area, the grass is greening up fast.
 - ii. Area II – Andy Larson – Andy said that his District Manager, Connie Richmeier, will be leaving the District and her last day is July 1, 2016. The river is running and there is water running in the irrigation canals.
 - iii. Area III – Brad Shogren – Brad reported that the new District Manager is working out good and that the NRCS Soil Health Technician will be leaving soon.

SCC MEETING MINUTES

April 25, 2016

Page 9

- iv. Area IV – John Wunder – John mentioned that they've received some rain and the corn is planted. Some conservation practices are still being installed in his area.
- v. Area V – Rod Vorhees – Rod reported that the District is busy with activities and is working with other counties on the Water Fest. His District is also actively working on the Salt Creek Project in cleaning up the creek. Fires have kept many busy replacing fencing.

12. ADJOURNMENT:

The next scheduled SCC meeting will be August 8, 2016, in Garden City, Kansas. Location and time will be determined at a later date.

A motion was made by Ted Nighswonger to adjourn the meeting. The motion was seconded by John Wunder. Motion carried. The meeting was adjourned at 1:27 p.m.



Rob Reschke
Executive Director



· Kansas Association of Conservation Districts
· Employees' Organization
·

KACD-EO Report

SCC Meeting

April

KACD-EO executive board reps are currently planning their area meetings. If you have a topic you would like discussed please let me know and I will make sure each area rep gets the info to pass along. Area I – June 14 & 15, Area II - June 22, Area III – No date yet, Area IV – May 9 & 10, and Area V – June (no specific date yet).

I do plan on attending the NACD Northern Plains Leaders meetings in Wichita, June 7 & 8. I will drive in early Tuesday morning and stay through Wednesday. If there is anything I can assist with please let me know.

Mandy Shoemaker is planning a SE KS Grassland Youth Camp for Fescue. Scheduled for June 7, 8 & 9. Not to compete with the current grassland camps. Different focus.

EO has started planning our annual meeting set for KACD Convention. The theme is “Guiding Conservation to a Brighter Future.” EO plans on continuing our 50/50 raffle and Christmas Ornament Silent Auction.

EO is also on board to support KACD and bring action items from each KACD area for the convention auction fundraiser. Each area will come up with an item or collection of items to represent their area. Dollar amount tossed out was \$200.

EO plans on covering the Soil Tunnel Trailer Wednesday the 14th at the State Fair in the Agriland Booth.

As far as EO dues. 91 counties have paid so far. 14 have not. Some are waiting till State funding comes in July. Budgets are getting extremely tight for districts.

And as always, if any has any questions or issues they need assistance with please contact myself or your area KACD-EO rep for assistance.

April 25, 2016 Financial Report

FY 2016 Water Resource Cost-Share Program

FUND
1800-1205

FY 2016 APPROPRIATION	\$1,948,289.00
FY 2015 CARRYOVER	\$156,939.17
TOTAL APPROPRIATION	\$2,105,228.17

DESCRIPTION	PO NUMBER	ALLOCATION	COMMITTED	EXPENDITURES	PO BALANCE	UNCOMMITTED
WR Admin*		\$126,313.69	\$0.00	\$103,995.59		\$22,318.10
A.S.K. Task Order	22683	\$25,000.00	\$25,000.00	\$14,650.00	\$10,350.00	\$0.00
KSU Extension Contract	19708	\$8,419.00	\$8,419.00	\$0.00	\$8,419.00	\$0.00
TOTAL ADMIN		\$159,732.69	\$25,000.00	\$118,645.59	\$18,769.00	\$22,318.10
WR CSIMS		\$1,754,902.78	\$955,015.48	\$722,755.94		\$77,131.36
110 MILE CREEK		\$41,500.00	\$23,500.00	\$10,677.13		\$7,322.87
COAL CREEK		\$36,362.21	\$0.00	\$7,863.40		\$28,498.81
LABETTE		\$41,417.50	\$0.00	\$0.00		\$41,417.50
PEAT CREEK		\$40,000.00	\$28,119.60	\$6,268.32		\$5,612.08
TWIN LAKES		\$40,000.00	\$13,132.58	\$16,399.25		\$10,468.17
TOTAL WR CSIMS		\$1,954,182.49	\$1,019,767.66	\$763,964.04	\$0.00	\$170,450.79
PAYBACK		\$8,687.01	\$0.00	\$8,687.01		\$0.00
TOTAL		\$2,105,228.17	\$1,044,767.66	\$873,922.62	\$18,769.00	\$192,768.89

*6% of initial appropriation for administrative expenses.

Prior FY PO's	PO No	Encumbered	Expenditures	PO Balance	Cancelled
FY 2015 WR CSIMS	19336	\$581,027.56	\$319,647.25	\$261,380.31	\$0.00
FY 2014 WR CSIMS	15024	\$160,561.97	\$8,645.39	\$151,916.58	\$0.00
FY 2014 KSU Water Probe	14690	\$4,000.00	\$4,000.00	\$0.00	\$0.00

Attachment B

FY 2016 Non-Point Source Pollution Control Program

FUND
1800-1210

FY 2016 APPROPRIATION	\$1,858,350.00
FY 2015 CARRYOVER	\$313,654.13
TOTAL APPROPRIATION	\$2,172,004.13

DESCRIPTION	PO NUMBER	ALLOCATION	COMMITTED	EXPENDITURES	PO BALANCE	UNCOMMITTED
NPS Admn		\$1,500.00	\$0.00	\$56.00		\$1,444.00
A.S.K. Task Order	22683	\$25,000.00	\$25,000.00	\$14,650.00	\$10,350.00	
Conservation Technician Positions-See Below	Various	\$175,000.00	\$0.00	\$80,114.51		\$94,885.49
No-Till Education Funds/Workshops	Various	\$67,500.00	\$0.00	\$39,258.31		\$28,241.69
Streambank Stabilization -See Below	Various	\$134,806.74	\$134,806.74	\$9,986.00	\$124,820.74	
FY 16 - Cancelled Funds		\$155,484.72	\$0.00	\$0.00		\$155,484.72
FY 15 Carryover funds		\$178,847.39	\$0.00	\$0.00		\$178,847.39
TOTAL ADMN		\$738,138.85	\$159,806.74	\$144,064.82	\$135,170.74	\$458,903.29
NPS CSIMS		\$1,289,390.90	\$578,148.82	\$665,266.97		\$45,975.11
110 Mile Creek		\$20,000.00	\$4,270.00	\$4,270.00		\$11,460.00
Coal Creek		\$10,029.18	\$0.00	\$0.00		\$10,029.18
Labette Creek		\$20,000.00	\$0.00	\$0.00		\$20,000.00
Peat Creek		\$20,000.00	\$9,957.60	\$10,000.00		\$42.40
Twin Lakes		\$27,787.20	\$5,292.00	\$22,495.20		\$0.00
NPS AFO CSIMS		\$50,000.00	\$0.00	\$15,592.50		\$34,407.50
NPS Carryover Funds		\$0.00	\$0.00	\$0.00		\$0.00
TOTAL NPS CSIMS		\$1,437,207.28	\$597,668.42	\$717,624.67	\$0.00	\$121,914.19
Paybacks		\$9,313.59	\$0.00	\$9,313.59		\$0.00
TOTAL		\$2,172,004.13	\$757,475.16	\$852,375.90	\$135,170.74	\$580,817.48

Prior FY PO's	PO No	Encumbered	Expenditures	PO Balance	Cancelled
FY 2015 NPS CSIMS	19337	\$452,328.64	\$186,214.34	\$266,114.30	\$0.00
FY 2014 NPS CSIMS	15032	\$211,652.22	\$103,061.80	\$108,590.42	\$0.00
FY 2013 NPS CSIMS	10906	\$133,883.88	\$7,450.00	\$126,433.88	\$0.00
FY 2012 KSU-Forestry	6022	\$12,929.52	\$8,444.15	\$4,485.37	\$0.00
Engineering Services - (SbPP)	Various	\$256,345.44	\$45,729.56	\$210,615.88	\$0.00

FY 2016 Aid to Conservation Districts

FUND
1800-1220

FY 2016 APPROPRIATION \$2,092,637.00
 FY 2015 CARRYOVER \$8,711.00
TOTAL APPROPRIATION \$2,101,348.00

DESCRIPTION	PO NUMBER	ALLOCATION	COMMITTED	EXPENDITURES	PO BALANCE	UNCOMMITTED
Aid To Conservation Districts		\$2,101,348.00	\$2,101,294.00	\$2,079,589.00	\$0.00	\$21,705.00
TOTAL		\$2,101,348.00	\$2,101,294.00	\$2,079,589.00	\$0.00	\$21,705.00

FY 2016 Conservation Reserve Enhancement Program/WTAP

FUND
1800-1225

FY 2016 APPROPRIATION \$446,040.00
 FY 2015 CARRYOVER \$269,025.83
TOTAL APPROPRIATION \$715,065.83

DESCRIPTION	PO NUMBER	ALLOCATION	COMMITTED	EXPENDITURES	PO BALANCE	UNCOMMITTED
CREP Admn (S&W)		\$93,847.00	\$0.00	\$73,500.75		\$20,346.25
Advertising & Printing		\$1,500.00	\$0.00	\$1,412.67		\$87.33
Other Admin		\$194.97	\$0.00	\$194.97		\$0.00
TOTAL ADMIN		\$95,541.97	\$0.00	\$75,108.39		\$20,433.58
CREP CSIMS		\$127,128.20	\$0.00	\$127,128.20		\$0.00
TOTAL WR CSIMS		\$127,128.20	\$0.00	\$127,128.20		\$0.00
*WTAP Projects	21989	\$205,844.10	\$205,844.10	\$0.00	\$205,844.10	\$0.00
TOTAL WTAP		\$205,844.10	\$205,844.10	\$0.00	\$205,844.10	
TOTAL UNALLOCATED		\$286,551.56	\$0.00	\$0.00		\$286,551.56
TOTAL		\$715,065.83	\$205,844.10	\$202,236.59		\$306,985.14

FY 2016 Watershed Dam Construction Program

	FUND	
	1800-1240	
FY 2016 APPROPRIATION		\$576,434.00
FY 2015 CARRYOVER		\$43,030.00
TOTAL APPROPRIATION		\$619,464.00

DESCRIPTION	PO NUMBER	ALLOCATION	COMMITTED	EXPENDITURES	PO BALANCE	UNCOMMITTED
Watershed Dam Construction-See Below	Various	\$619,464.00	\$589,358.20	\$0.00	\$0.00	\$30,105.80
TOTAL		\$619,464.00	\$589,358.20	\$0.00	\$0.00	\$30,105.80

Prior FY PO's	PO No	Encumbered	Expenditures	PO Balance	Cancelled
FY 2012 Watershed Dam Construction-See Below	Various	\$54,063.00	\$0.00	\$54,063.00	\$0.00
FY 2013 Mill Creek 85 WSD - Site 111	6958	\$120,000.00	\$0.00	\$120,000.00	\$0.00
FY 2014 Watershed Dam Construction-See Below	Various	\$99,800.00	\$7,744.00	\$92,056.00	\$0.00
FY 2015 Watershed Construction-See Below	Various	\$285,514.54	\$108,336.00	\$177,178.54	\$0.00

FY 2016 Water Quality Buffer Initiative Program

	FUND	
	1800-1250	
FY 2016 APPROPRIATION		\$249,792.00
FY 2015 CARRYOVER		\$58,735.87
TOTAL APPROPRIATION		\$308,527.87

DESCRIPTION	PO NUMBER	ALLOCATION	COMMITTED	EXPENDITURES	PO BALANCE	UNCOMMITTED
BUF CSIMS		\$249,792.00	\$229,384.19	\$0.00		\$20,407.81
Carryover Funds		\$58,735.87	\$0.00	\$0.00		\$58,735.87
TOTAL		\$308,527.87	\$229,384.19	\$0.00		\$79,143.68

FY 2016 Riparian & Wetland Protection Program

FUND
1800-1260

FY 2016 APPROPRIATION	\$152,651.00
FY 2015 CARRYOVER	\$8,619.37
FY 2016 Enhancements	\$0.00
TOTAL APPROPRIATION	\$161,270.37

DESCRIPTION	PO NUMBER	ALLOCATION	COMMITTED	EXPENDITURES	PO BALANCE	UNCOMMITTED
Admn - Stream Trailer		\$1,263.03	\$0.00	\$1,263.03		\$0.00
KSU/KFS-SbPP Buffer Maintenance Contracts		\$112,351.00	\$0.00	\$0.00		\$112,351.00
TOTAL ADMN		\$113,614.03	\$0.00	\$1,263.03		\$112,351.00
RW CSIMS		\$40,000.00	\$16,763.59	\$0.00		\$23,236.41
TOTAL RW CSIMS		\$40,000.00	\$16,763.59	\$0.00		\$23,236.41
Unallocated		\$7,656.34	\$0.00	\$0.00		\$7,656.34
TOTAL		\$161,270.37	\$16,763.59	\$1,263.03		\$143,243.75

Prior FY PO's	PO No	Encumbered	Expenditures	PO Balance	Cancelled
FY 2012TWI-On-Call - Cottonwood Reach II	6684	\$197,013.00	\$152,426.50	\$44,586.50	\$0.00
FY 2012 KSU/KFS-SbPP Buffer Maintenance Contracts	Various	\$32,297.71	\$22,751.60	\$9,546.11	\$0.00
FY 2014 KSU/KFS-SbPP Buffer Maintenance Contracts	Various	\$170,362.34	\$35,670.01	\$134,692.33	\$0.00
FY 2015 KSU/KFS-SbPP Buffer Maintenance Contract No. RW-KSU/KFS-2015-01	15603	\$105,713.36	\$2,990.75	\$102,722.61	\$0.00
FY 2015 RW CSIMS	19338	\$32,480.80	\$32,480.80	\$0.00	\$0.00

FY 2016 Lake/Water Supply Restoration Program

FUND
1800-1275

FY 2016 APPROPRIATION	\$258,156.00
FY 2015 CARRYOVER	\$0.00
TOTAL APPROPRIATION	\$258,156.00

DESCRIPTION	PO NUMBER	ALLOCATION	COMMITTED	EXPENDITURE	PO BALANCE	UNCOMMITTED
Post Rock-004	22655	\$258,156.00	\$235,000.00	\$0.00	\$235,000.00	\$23,156.00
TOTAL		\$258,156.00	\$235,000.00	\$0.00	\$235,000.00	\$23,156.00

FY 2016 Streambank Stabilization

FUND
1800-1290

FY 2015 APPROPRIATION \$750,000.00
Carry Forward \$216.00
TOTAL APPROPRIATION \$750,000.00

DESCRIPTION	PO Number	ALLOCATION	COMMITTED	EXPENDITURES	PO BALANCE	UNCOMMITTED
Glacial Hills RC & D - Streambank Stabilization	18540	\$661,404.65	\$661,404.65	\$0.00	\$661,404.65	\$0.00
Wildhorse - Eng. Svcs. - Delaware Phase III Projects	17211	\$60,711.00	\$60,711.00	\$21,248.85	\$39,462.15	\$0.00
TWI - Eng. Svcs. - Delaware Phase III/IV Projects	16515	\$18,909.35	\$18,909.35	\$4,788.20	\$14,121.15	\$0.00
TWI - Eng. Svcs. - Delaware Phase III/IV Projects	17959	\$8,675.00	\$8,675.00	\$1,744.60	\$6,930.40	\$0.00
TOTAL Streambank Stabilization		\$749,700.00	\$749,700.00	\$27,781.65	\$721,918.35	\$0.00

FY 2016 Agricultural Liming Materials Fee Fund

FUND
2118-1200

DESCRIPTION	PO NUMBER	CASH BEGINNING BALANCE	DEPOSITS	EXPENDITURES	PO BALANCE	UNCOMMITTED
Agricultural Liming Materials Fee Fund		\$56,171.00	\$28,993.00	\$51,752.00	\$0.00	\$33,412.00
TOTAL		\$56,171.00	\$28,993.00	\$51,752.00	\$0.00	\$33,412.00

FY 2016 Land Reclamation Fee Fund

FUND
2542-2090

DESCRIPTION	PO NUMBER	CASH BEGINNING BALANCE	DEPOSITS	EXPENDITURES	PO BALANCE	UNCOMMITTED
Land Reclamation Fee Fund		\$72,944.00	\$61,874.00	\$136,924.00	\$0.00	-\$2,106.00
TOTAL		\$72,944.00	\$61,874.00	\$136,924.00	\$0.00	-\$2,106.00

Prior FY PO's	PO No	Encumbered	Expenditures	PO Balance	Cancelled
FY 2014 - A.S.K. LR Taks Order 2013-1006	14199	\$95,200.00	\$43,800.00	\$51,400.00	\$0.00

Fiscal Year 2016 Transfers from Other State Agencies

FUND
2517-2510

Carry Forward

\$279,696.00

DESCRIPTION	PO Number	DEPOSIT	COMMITTED	EXPENDITURES	PO BALANCE	UNCOMMITTED
Conservation Technicians - KDWPT	Various	\$75,000.00	\$75,000.00	\$75,000.00	\$0.00	\$0.00
Conservation Technicians - KDHE	Various	\$279,696.00	\$93,874.56	\$93,874.56	\$0.00	\$185,821.44
Streambank - Tuttle Creek - KWO		\$400,000.00	\$0.00	\$0.00	\$0.00	\$400,000.00
Streambank - Cottonwood - KWO		\$150,000.00	\$0.00	\$0.00	\$0.00	\$150,000.00
TOTAL		\$904,696.00	\$168,874.56	\$168,874.56	\$0.00	\$735,821.44

FY 2016 Transfers from Federal Agencies

Fund
3917-3825

DESCRIPTION	PO NUMBER	ALLOCATION	COMMITTED	EXPENDITURES	PO BALANCE	UNCOMMITTED
Conservation Technicians	Various	\$297,507.02	\$297,507.02	\$297,507.02	\$0.00	\$0.00
TOTAL		\$297,507.02	\$297,507.02	\$297,507.02	\$0.00	\$0.00

FY 2016 Watershed Protection

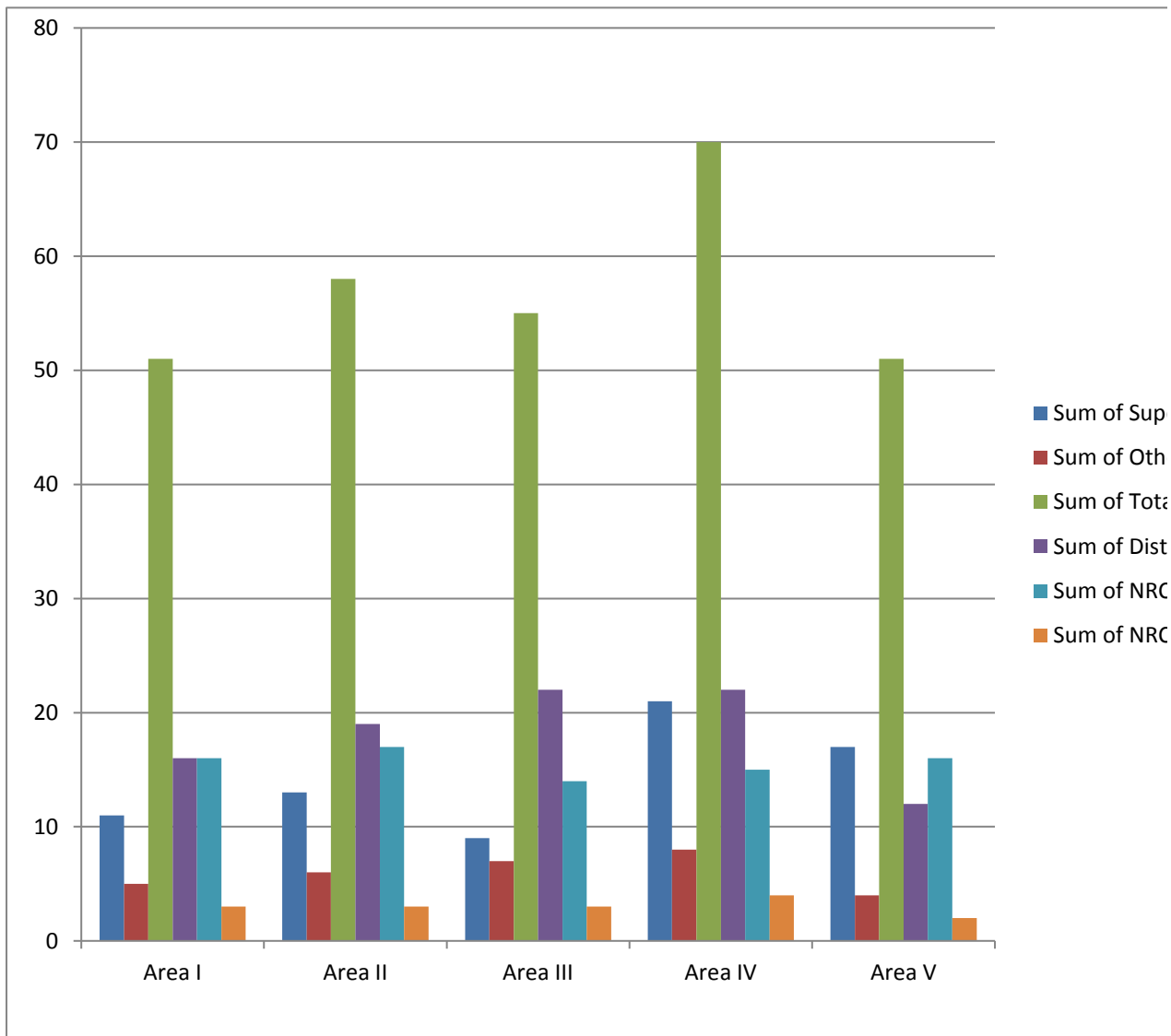
FUND
3889-3880

DESCRIPTION	PO NUMBER	CASH BEGINNING BA	DEPOSITS	EXPENDITURES	PO BALANCE	UNCOMMITTED
Indirect EPA 319 Funds		\$0.00	\$10,000.00	\$0.00	\$0.00	\$10,000.00
TOTAL		\$0.00	\$10,000.00	\$0.00	\$0.00	\$10,000.00

2016 Spring Workshop Attendance Summary

Area	District Employee	NRCS Employee	Supervisor	NRCS (State)	Other
Area I	16	16	11	3	5
Area II	19	17	13	3	6
Area III	22	14	9	3	7
Area IV	22	15	21	4	8
Area V	12	16	17	2	4

Total	91	78	71	15	30
--------------	-----------	-----------	-----------	-----------	-----------



“Building Relationships with County Commissioners” Breakout Spring Workshop March 2016

- Tell them what the district accomplishes
- Invite them to district events (personal invites)
- Build relationships with commissioners staff
- Recognize what they do for the county and conservation
- Take them on tour to see practices
 - VIP tour that includes the commissioners, sanitarian, agents etc.
- Show return for the dollars invested
- Partnering with other county groups and agencies
- Have NRCS present to help answer technical questions
- Have the CD board present, strength in numbers
 - Have board wear same shirt
- Recognize Commissioners at events (Annual meeting, etc.)
 - Hand deliver a thank you note to the commissioner for attendance
- Prepare handouts and powerpoints
- Explain the need for “matching funds”
- Have a teacher attend that has been helped by CD
- Attending commission meetings regularly with updates
- Try to be early to speak with them
- Be Honest
-

Statewide notes on Partnership Meeting Breakout at the SCC Spring Workshop. March 2016.

- Presentation on topics relevant for the area.
- Reports do not need to cover most activities that are not occurring in that area. (DOC and NRCS Reports).
- Breakout sessions for Supervisors, Employees and NRCS.
- Keynote speaker from the area (successful conservation farmer, etc.)
- Move KACD convention to other areas, highlight the local area conservation/farming
- SCC meeting should not be combined with NRCS all personal meeting.
- Liked the legislators update. However would like added “what should supervisors be doing” ie. Letter writing campaigns, capital visits, public education. Contact information for legislators.
- Presentations from a local conservation district on practices in their county.
- Presentations from a local conservation district on activities.
- Consider afternoon tours of local practices.
- Move SCC meeting to February
- KSRE Board responsibility workshop at convention
- Explain the partnership and acronym list
- More hands on activities.
- “Anytime the partners can meet, it’s a good thing”
- Scholarship for new supervisors to attend convention
- KACD focus on Resolutions/ how to contact lawmakers
- History of CD’s, honor the work done and people of the past.
- Presentation on CD enterprise opportunities
- Supervisor training should be done at the local level, maybe getting a management unit together for training.
- Give away seed, free food etc.
- Personal invitations from SCC and KACD
- Updates can be more relevant, many have heard them before.
- Topics that can be taken back to the CD
- Keep the breaks, allows for networking
- More entertainment at the KACD Convention

- Split ideas on catering, rotating the meetings, length of meeting.

Legislative Update

Conservation Reserve Enhancement Program (CREP) - SB330:

KDA sought to obtain statutory authority to implement the program rather than relying on a year-by-year budget proviso - both Water Quantity & Quality CREP Projects would be authorized

Passed into Law. Effective 07/01/2016

Conservation Easements - SB425:

Authorizes the board of county commissioners of any county to regulate conservation easements on property located within the county

Conference Committee

Water Right Impairments - HB2245:

Seeks to change the process by which a senior water right owner can seek investigation and relief from impairment from a junior water right owner

Conference Committee

Water Right Filing Fee - Sub HB2059:

Seeks to decrease the filing fee and allow flexibility for water right applications for "waters that would otherwise leave the state"

Conference Committee

Multi-Year Flex Accounts – SB329:

The ability to roll over a portion of an unused allocation and change the place of use when reenrolling into another MYFA was an approved legislative change from the 2015 Session; this legislation would change the definition of acres to accommodate upgrades from flood to center pivot irrigation

Passed into Law. Effective 07/01/2016

Penalties for failure to submit water use reports: SB337-

Increase the maximum civil penalty that may be assessed for failure to submit an annual water use report from \$250 to \$1,000 and authorize suspension of water use by DWR's Chief Engineer

Conference Committee

FY 2017 Budget

FY 2017 Division of Conservation Budget

Agency/Program	FY2017 Appropriated
Water Resources Cost Share-1205	\$ 1,948,289
Nonpoint Source Pollution Asst.-1210	\$ 1,858,350
Aid to Conservation Districts-1220	\$ 2,092,637
Watershed Dam Construction-1240	\$ 576,434
Water Quality Buffer Initiative-1250	\$ 249,792
Riparian and Wetland Program-1260	\$ 152,651
Water Supply Restoration Program-1275	\$ 258,156

CREP FY17 & beyond. \$446,040 SB 330 Signed into Law on 3/24/16. Effective 07/01/2016
Both Water Quantity and Water Quality

- In our budget submission this fall, we will be requesting SWP funds for this program like we have in the past.
- We will have carryover at the end of FY 2016 that we plan to utilize in FY17 as well.
- We need to have both the ability to carry those funds over as well as spending authority in our SWP CREP fund 1800-1225.
- As in FYI, the bill authorizes a fund be created, but we will not request that as we will plan on continuing to use the existing 1800-1225 fund since the program will continue to be funded with SWP monies.
 - It is possible down the road we may receive some funds from other agencies for this program. At that point we will request a state fee fund be setup to receipt those funds into. If that happens, we will have a SWP/appropriated fund and a state fee fund for this program.



July 2016–June 2017 (United States)

July 2016

S	M	T	W	T	F	S
					1	2
3	4	5	6	7	8	9
10	11	12	13	14	15	16
17	18	19	20	21	22	23
24	25	26	27	28	29	30
31						

●:4 ○:11 ○:19 ○:26

August 2016

S	M	T	W	T	F	S
	1	2	3	4	5	6
7	8	9	10	11	12	13
14	15	16	17	18	19	20
21	22	23	24	25	26	27
28	29	30	31			

●:2 ○:10 ○:18 ○:24

September 2016

S	M	T	W	T	F	S
				1	2	3
4	5	6	7	8	9	10
11	12	13	14	15	16	17
18	19	20	21	22	23	24
25	26	27	28	29	30	

●:1 ○:9 ○:16 ○:23 ●:30

October 2016

S	M	T	W	T	F	S
						1
2	3	4	5	6	7	8
9	10	11	12	13	14	15
16	17	18	19	20	21	22
23	24	25	26	27	28	29
30	31					

○:9 ○:16 ●:22 ●:30

November 2016

S	M	T	W	T	F	S
		1	2	3	4	5
6	7	8	9	10	11	12
13	14	15	16	17	18	19
20	21	22	23	24	25	26
27	28	29	30			

○:7 ○:14 ○:21 ●:29

December 2016

S	M	T	W	T	F	S
				1	2	3
4	5	6	7	8	9	10
11	12	13	14	15	16	17
18	19	20	21	22	23	24
25	26	27	28	29	30	31

○:7 ○:13 ○:20 ●:29

January 2017

S	M	T	W	T	F	S
1	2	3	4	5	6	7
8	9	10	11	12	13	14
15	16	17	18	19	20	21
22	23	24	25	26	27	28
29	30	31				

○:5 ○:12 ○:19 ●:27

February 2017

S	M	T	W	T	F	S
			1	2	3	4
5	6	7	8	9	10	11
12	13	14	15	16	17	18
19	20	21	22	23	24	25
26	27	28				

○:3 ○:10 ○:18 ●:26

March 2017

S	M	T	W	T	F	S
			1	2	3	4
5	6	7	8	9	10	11
12	13	14	15	16	17	18
19	20	21	22	23	24	25
26	27	28	29	30	31	

○:5 ○:12 ○:20 ●:27

April 2017

S	M	T	W	T	F	S
						1
2	3	4	5	6	7	8
9	10	11	12	13	14	15
16	17	18	19	20	21	22
23	24	25	26	27	28	29
30						

○:3 ○:11 ○:19 ●:26

May 2017

S	M	T	W	T	F	S
	1	2	3	4	5	6
7	8	9	10	11	12	13
14	15	16	17	18	19	20
21	22	23	24	25	26	27
28	29	30	31			

○:2 ○:10 ○:18 ●:25

June 2017

S	M	T	W	T	F	S
				1	2	3
4	5	6	7	8	9	10
11	12	13	14	15	16	17
18	19	20	21	22	23	24
25	26	27	28	29	30	

○:1 ○:9 ○:17 ●:23 ○:30

Jul 4, 2016 **Independence Day**
 Sep 5, 2016 **Labor Day**
 Oct 10, 2016 **Columbus Day**
 Oct 31, 2016 **Halloween**
 Nov 8, 2016 **Election Day**
 Nov 11, 2016 **Veterans Day**
 Nov 24, 2016 **Thanksgiving Day**

Dec 24, 2016 **Christmas Eve**
 Dec 25, 2016 **Christmas Day**
 Dec 26, 2016 **'Christmas Day' observed**
 Dec 31, 2016 **New Year's Eve**
 Jan 1, 2017 **New Year's Day**
 Jan 2, 2017 **'New Year's Day' observed**
 Jan 16, 2017 **Martin Luther King Day**

Feb 14, 2017 **Valentine's Day**
 Feb 20, 2017 **Presidents' Day**
 Apr 13, 2017 **Thomas Jefferson's Birthday**
 Apr 16, 2017 **Easter Sunday**
 May 14, 2017 **Mother's Day**
 May 29, 2017 **Memorial Day**
 Jun 18, 2017 **Father's Day**



**State Conservation Commission Meeting
April 25, 2016**

FY 2017 Proposed Program Revisions

WRCSP

➤ **NRCS Code 449 Irrigation Water Management**

- Request by the Stevens County Conservation District to add Soil Water Probe Moisture Sensors as an eligible component under code 449 Irrigation Water Management.
 - One probe per 122 ac. of irrigated cropland.
 - Estimated cost including labor, website connections and professional fees for one year: \$2,500 per probe.
 - 5 to 10 year maintenance. Technology could change in 10 years so the district recommends a 5 year maintenance agreement.
 - Landowner would need to show a 2.5 inch reduction in water use from an established previous 5 year average using water use reports sent to KDA.
 - Landowner would be responsible for the annual maintenance costs after first year. Annual cost estimated at \$300.
- GMD #3 has a Soil Moisture Probe RCPP Project which pays for the land practice and requires installation of telemetry-based soil moisture monitoring and flow metering.
 - The EQIP payment is \$1,922 per year for 3 years for a total of \$5,765
 - The payment covers most of the cost of the equipment.
 - Some applications are being rejected because of the nozzle spacing.
 - NRCS requires a maximum spacing of 80” between nozzles.
 - Many systems have a 90” spacing between nozzles.
 - Current minimum pumping rate for the well is 4.5 gpm/acre. The GMD is looking to lower the minimum pumping rate to 3.5 gpm/acre to expand the eligibility pool.

➤ **DOC Staff Recommendation:**

- *Wait on proposed revision until next year to give the RCPP project a chance expend their funds.*

WRCSP & NPSPCP

➤ Request by Shawnee County Conservation District to all extra ranking points for applicants that have attended a conservation related workshop i.e. no-till, cover crops on cropland.

- SCC approved allowing extra ranking points for applicants that have attended a grazing management workshop for FY 2016. This applies for applications for grazing practices.
- The proposed program revision would be to allow extra ranking points for applicants that have attended a no-till or cover crop workshop. This would apply for applications for erosion and sediment control practices.

➤ **DOC Staff Recommendation:**

- *Allow extra ranking points for applicants that have attended a no-till or cover crop workshop in the last year for erosion and sediment control practices.*

Water Resources Cost-Share Program		FY 2017 Allocation - SCC Meeting April 25, 2016	
FY 2016 Appropriation:	1,948,289		
FY 2015 Carryover:	0		
FY 2015 Reserve:	0		
FY 2016 CSIMS	-25,000		
FY 2016 Admin expenses:	-116,897		6% of appropriation proviso to assist with SGF shortfall
FY 2016 Total Cost-Share CD Allocation:	1,806,392		
FY 2017 Appropriation:	1,948,289		
FY 2016 Carryover:	0		
FY 2016 Reserve:	0		June 1 uncommitted FY 16 funds will be added to fall FY 2017 reallocation
FY 2017 CSIMS	-15,000		
FY 2017 Admin expenses:	-116,897		6% of appropriation proviso to assist with SGF shortfall
FY 2017 Total Cost-Share CD Allocation:	1,816,392		
ISSUES:			
1. Proviso to allow up to 6% of appropriation for contract TA and non-salary admin expenses.			
FY 2017 Cost-Share Allocations:			
FY 2017 Cost-Share Allocations			
DNA	1,606,392		Increase/Decrease from FY 2016
TMDL Allocation	210,000		DNA
	1,816,392		TMDL Allocation
		1,606,392	10,000
		200,000	10,000
		1,806,392	Total

WRCSP FY 2017 Allocations April 25, 2016 \$1,606,392 - Total Available for Allocation

FY 2016 Allocations			FY 2017 Allocations				
COUNTY	DNA	TMDL	FY 2016	DNA	TMDL	FY 2017	Inc/Dec
			Total			Total	
ALLEN	12,797	\$0	\$12,797	12,797	\$0	\$12,797	\$0
ANDERSON	12,797	\$0	\$12,797	12,797	\$0	\$12,797	\$0
ATCHISON	14,003	\$0	\$14,003	14,003	\$0	\$14,003	\$0
BARBER	17,621	\$0	\$17,621	17,621	\$0	\$17,621	\$0
BARTON	15,812	\$0	\$15,812	15,812	\$0	\$15,812	\$0
BOURBON	12,797	\$0	\$12,797	12,797	\$0	\$12,797	\$0
BROWN	14,606	\$0	\$14,606	14,606	\$0	\$14,606	\$0
BUTLER	15,812	\$0	\$15,812	15,812	\$0	\$15,812	\$0
CHASE	14,003	\$0	\$14,003	14,003	\$0	\$14,003	\$0
CHAUTAUQUA	13,400	\$0	\$13,400	13,400	\$0	\$13,400	\$0
CHEROKEE	12,194	\$0	\$12,194	12,194	\$0	\$12,194	\$0
CHEYENNE	17,018	\$0	\$17,018	17,018	\$0	\$17,018	\$0
CLARK	17,621	\$0	\$17,621	17,621	\$0	\$17,621	\$0
CLAY	15,812	\$0	\$15,812	15,812	\$0	\$15,812	\$0
CLOUD	15,209	\$0	\$15,209	15,209	\$0	\$15,209	\$0
COFFEY	14,003	\$0	\$14,003	14,003	\$0	\$14,003	\$0
COMANCHE	17,018	\$0	\$17,018	17,018	\$0	\$17,018	\$0
COWLEY	15,812	\$0	\$15,812	15,812	\$0	\$15,812	\$0
CRAWFORD	12,797	\$0	\$12,797	12,797	\$0	\$12,797	\$0
DECATUR	16,415	\$0	\$16,415	16,415	\$0	\$16,415	\$0
DICKINSON	15,812	\$0	\$15,812	15,812	\$0	\$15,812	\$0
DONIPHAN	14,606	\$0	\$14,606	14,606	\$0	\$14,606	\$0
DOUGLAS	14,003	\$0	\$14,003	14,003	\$0	\$14,003	\$0
EDWARDS	14,606	\$0	\$14,606	14,606	\$0	\$14,606	\$0
ELK	13,400	\$0	\$13,400	13,400	\$0	\$13,400	\$0
ELLIS	17,018	\$0	\$17,018	17,018	\$0	\$17,018	\$0
ELLSWORTH	15,812	\$0	\$15,812	15,812	\$0	\$15,812	\$0
FINNEY	18,224	\$0	\$18,224	18,224	\$0	\$18,224	\$0
FORD	17,018	\$0	\$17,018	17,018	\$0	\$17,018	\$0
FRANKLIN	14,003	\$0	\$14,003	14,003	\$0	\$14,003	\$0
GEARY	13,400	\$0	\$13,400	13,400	\$0	\$13,400	\$0
GOVE	17,018	\$0	\$17,018	17,018	\$0	\$17,018	\$0
GRAHAM	16,415	\$0	\$16,415	16,415	\$0	\$16,415	\$0
GRANT	15,209	\$0	\$15,209	15,209	\$0	\$15,209	\$0
GRAY	15,812	\$0	\$15,812	15,812	\$0	\$15,812	\$0
GREELEY	15,812	\$0	\$15,812	15,812	\$0	\$15,812	\$0
GREENWOOD	14,606	\$0	\$14,606	14,606	\$0	\$14,606	\$0
HAMILTON	16,415	\$0	\$16,415	16,415	\$0	\$16,415	\$0
HARPER	16,415	\$0	\$16,415	16,415	\$0	\$16,415	\$0
HARVEY	13,400	\$0	\$13,400	13,400	\$0	\$13,400	\$0
HASKELL	16,415	\$0	\$16,415	16,415	\$0	\$16,415	\$0
HODGEMAN	15,812	\$0	\$15,812	15,812	\$0	\$15,812	\$0
JACKSON	14,606	\$0	\$14,606	14,606	\$0	\$14,606	\$0
JEFFERSON	14,003	\$0	\$14,003	14,003	\$0	\$14,003	\$0
JEWELL	16,415	\$0	\$16,415	16,415	\$0	\$16,415	\$0
JOHNSON	13,400	\$0	\$13,400	13,400	\$0	\$13,400	\$0
KEARNY	15,812	\$0	\$15,812	15,812	\$0	\$15,812	\$0
KINGMAN	16,415	\$0	\$16,415	16,415	\$0	\$16,415	\$0
KIOWA	15,209	\$0	\$15,209	15,209	\$0	\$15,209	\$0
LABETTE	12,797	\$0	\$12,797	12,797	\$0	\$12,797	\$0
LANE	15,812	\$0	\$15,812	15,812	\$0	\$15,812	\$0
LEAVENWORTH	14,003	\$0	\$14,003	14,003	\$0	\$14,003	\$0
LINCOLN	15,812	\$0	\$15,812	15,812	\$0	\$15,812	\$0
LINN	12,797	\$0	\$12,797	12,797	\$0	\$12,797	\$0
LOGAN	16,415	\$0	\$16,415	16,415	\$0	\$16,415	\$0
LYON	14,606	\$0	\$14,606	14,606	\$0	\$14,606	\$0
MARION	15,209	\$0	\$15,209	15,209	\$0	\$15,209	\$0
MARSHALL	15,812	\$0	\$15,812	15,812	\$0	\$15,812	\$0
MCPHERSON	15,812	\$0	\$15,812	15,812	\$0	\$15,812	\$0

WRCSP FY 2017 Allocations April 25, 2016 \$1,606,392 - Total Available for Allocation

FY 2016 Allocations			FY 2017 Allocations				
COUNTY	DNA	TMDL	FY 2016 Total	DNA	TMDL	FY 2017 Total	Inc/Dec
MEADE	17,018	\$0	\$17,018	17,018	\$0	\$17,018	\$0
MIAMI	14,003	\$0	\$14,003	14,003	\$0	\$14,003	\$0
MITCHELL	15,209	\$0	\$15,209	15,209	\$0	\$15,209	\$0
MONTGOMERY	12,797	\$0	\$12,797	12,797	\$0	\$12,797	\$0
MORRIS	14,606	\$0	\$14,606	14,606	\$0	\$14,606	\$0
MORTON	15,209	\$0	\$15,209	15,209	\$0	\$15,209	\$0
NEMAHA	15,812	\$0	\$15,812	15,812	\$0	\$15,812	\$0
NEOSHO	12,797	\$0	\$12,797	12,797	\$0	\$12,797	\$0
NESS	17,621	\$0	\$17,621	17,621	\$0	\$17,621	\$0
NORTON	16,415	\$0	\$16,415	16,415	\$0	\$16,415	\$0
OSAGE	14,003	\$0	\$14,003	14,003	\$0	\$14,003	\$0
OSBORNE	17,018	\$0	\$17,018	17,018	\$0	\$17,018	\$0
OTTAWA	15,812	\$0	\$15,812	15,812	\$0	\$15,812	\$0
PAWNEE	16,415	\$0	\$16,415	16,415	\$0	\$16,415	\$0
PHILLIPS	17,018	\$0	\$17,018	17,018	\$0	\$17,018	\$0
POTTAWATOMIE	15,812	\$0	\$15,812	15,812	\$0	\$15,812	\$0
PRATT	14,606	\$0	\$14,606	14,606	\$0	\$14,606	\$0
RAWLINS	17,018	\$0	\$17,018	17,018	\$0	\$17,018	\$0
RENO	15,812	\$0	\$15,812	15,812	\$0	\$15,812	\$0
REPUBLIC	14,606	\$0	\$14,606	14,606	\$0	\$14,606	\$0
RICE	14,606	\$0	\$14,606	14,606	\$0	\$14,606	\$0
RILEY	14,003	\$0	\$14,003	14,003	\$0	\$14,003	\$0
ROOKS	16,415	\$0	\$16,415	16,415	\$0	\$16,415	\$0
RUSH	16,415	\$0	\$16,415	16,415	\$0	\$16,415	\$0
RUSSELL	15,812	\$0	\$15,812	15,812	\$0	\$15,812	\$0
SALINE	15,812	\$0	\$15,812	15,812	\$0	\$15,812	\$0
SCOTT	15,812	\$0	\$15,812	15,812	\$0	\$15,812	\$0
SEDGWICK	15,812	\$0	\$15,812	15,812	\$0	\$15,812	\$0
SEWARD	15,209	\$0	\$15,209	15,209	\$0	\$15,209	\$0
SHAWNEE	13,400	\$0	\$13,400	13,400	\$0	\$13,400	\$0
SHERIDAN	16,415	\$0	\$16,415	16,415	\$0	\$16,415	\$0
SHERMAN	17,018	\$0	\$17,018	17,018	\$0	\$17,018	\$0
SMITH	16,415	\$0	\$16,415	16,415	\$0	\$16,415	\$0
STAFFORD	14,606	\$0	\$14,606	14,606	\$0	\$14,606	\$0
STANTON	15,812	\$0	\$15,812	15,812	\$0	\$15,812	\$0
STEVENS	15,812	\$0	\$15,812	15,812	\$0	\$15,812	\$0
SUMNER	17,018	\$0	\$17,018	17,018	\$0	\$17,018	\$0
THOMAS	17,018	\$0	\$17,018	17,018	\$0	\$17,018	\$0
TREGO	16,415	\$0	\$16,415	16,415	\$0	\$16,415	\$0
WABAUNSEE	14,606	\$0	\$14,606	14,606	\$0	\$14,606	\$0
WALLACE	16,415	\$0	\$16,415	16,415	\$0	\$16,415	\$0
WASHINGTON	15,812	\$0	\$15,812	15,812	\$0	\$15,812	\$0
WICHITA	16,415	\$0	\$16,415	16,415	\$0	\$16,415	\$0
WILSON	13,400	\$0	\$13,400	13,400	\$0	\$13,400	\$0
WOODSON	12,797	\$0	\$12,797	12,797	\$0	\$12,797	\$0
WYANDOTTE	13,802	\$0	\$13,802	13,802	\$0	\$13,802	\$0
Totals	\$1,606,392	\$0	\$1,606,392	\$1,606,392	\$0	\$1,606,392	\$0
			TMDL Allocation				\$210,000
			Morris	Twin Lakes Watershed			\$35,000
			Osage	110 Mile Creek Watershed			\$35,000
			Washington	Peats Creek Watershed (2)			\$70,000
FY 2016			Lyon	Coal Creek Watershed			\$35,000
DNA	\$1,606,392		Labette	Labette Creek Watershed			\$35,000
TMDL Allocation:	\$210,000						
Total Allocation:	\$1,816,392						

FY 2017 NonPoint Source Pollution Control Program Allocations:

April 25, 2016 SCC Meeting

\$1,357,350 - Total Available for Allocation

FY 2016 Allocations			FY 2017 Allocations				
County	Base Cost-Share	Total TMDL	FY2016 Total Cost-Share	Base Cost-Share	Total TMDL	FY2017 Total Cost-Share	Inc/Dec
Allen	\$13,356	\$0	\$13,356	\$12,595	\$0	\$12,595	\$761
Anderson	\$13,356	\$0	\$13,356	\$12,595	\$0	\$12,595	\$761
Atchison	\$16,434	\$0	\$16,434	\$15,502	\$0	\$15,502	\$932
Barber	\$13,698	\$0	\$13,698	\$12,918	\$0	\$12,918	\$780
Barton	\$13,698	\$0	\$13,698	\$12,918	\$0	\$12,918	\$780
Bourbon	\$13,356	\$0	\$13,356	\$12,595	\$0	\$12,595	\$761
Brown	\$15,408	\$0	\$15,408	\$14,533	\$0	\$14,533	\$875
Butler	\$16,434	\$0	\$16,434	\$15,502	\$0	\$15,502	\$932
Chase	\$18,486	\$0	\$18,486	\$17,440	\$0	\$17,440	\$1,046
Chautauqua	\$14,382	\$0	\$14,382	\$13,564	\$0	\$13,564	\$818
Cherokee	\$16,434	\$0	\$16,434	\$15,502	\$0	\$15,502	\$932
Cheyenne	\$9,252	\$0	\$9,252	\$8,719	\$0	\$8,719	\$533
Clark	\$13,014	\$0	\$13,014	\$12,272	\$0	\$12,272	\$742
Clay	\$14,382	\$0	\$14,382	\$13,564	\$0	\$13,564	\$818
Cloud	\$15,066	\$0	\$15,066	\$14,210	\$0	\$14,210	\$856
Coffey	\$16,434	\$0	\$16,434	\$15,502	\$0	\$15,502	\$932
Comanche	\$13,698	\$0	\$13,698	\$12,918	\$0	\$12,918	\$780
Cowley	\$16,434	\$0	\$16,434	\$15,502	\$0	\$15,502	\$932
Crawford	\$14,382	\$0	\$14,382	\$13,564	\$0	\$13,564	\$818
Decatur	\$10,620	\$0	\$10,620	\$10,011	\$0	\$10,011	\$609
Dickinson	\$16,434	\$0	\$16,434	\$15,502	\$0	\$15,502	\$932
Doniphan	\$14,382	\$0	\$14,382	\$13,564	\$0	\$13,564	\$818
Douglas	\$15,408	\$0	\$15,408	\$14,533	\$0	\$14,533	\$875
Edwards	\$12,330	\$0	\$12,330	\$11,626	\$0	\$11,626	\$704
Elk	\$17,460	\$0	\$17,460	\$16,471	\$0	\$16,471	\$989
Ellis	\$13,698	\$0	\$13,698	\$12,918	\$0	\$12,918	\$780
Ellsworth	\$14,382	\$0	\$14,382	\$13,564	\$0	\$13,564	\$818
Finney	\$10,278	\$0	\$10,278	\$9,688	\$0	\$9,688	\$590
Ford	\$12,330	\$0	\$12,330	\$11,626	\$0	\$11,626	\$704
Franklin	\$16,434	\$0	\$16,434	\$15,502	\$0	\$15,502	\$932
Geary	\$15,408	\$0	\$15,408	\$14,533	\$0	\$14,533	\$875
Gove	\$10,278	\$0	\$10,278	\$9,688	\$0	\$9,688	\$590
Graham	\$13,014	\$0	\$13,014	\$12,272	\$0	\$12,272	\$742
Grant	\$9,936	\$0	\$9,936	\$9,365	\$0	\$9,365	\$571
Gray	\$10,278	\$0	\$10,278	\$9,688	\$0	\$9,688	\$590
Greeley	\$9,594	\$0	\$9,594	\$9,042	\$0	\$9,042	\$552
Greenwood	\$17,460	\$0	\$17,460	\$16,471	\$0	\$16,471	\$989
Hamilton	\$9,594	\$0	\$9,594	\$9,042	\$0	\$9,042	\$552
Harper	\$14,382	\$0	\$14,382	\$13,564	\$0	\$13,564	\$818
Harvey	\$14,382	\$0	\$14,382	\$13,564	\$0	\$13,564	\$818
Haskell	\$9,594	\$0	\$9,594	\$9,042	\$0	\$9,042	\$552
Hodgeman	\$11,646	\$0	\$11,646	\$10,980	\$0	\$10,980	\$666
Jackson	\$17,460	\$0	\$17,460	\$16,471	\$0	\$16,471	\$989
Jefferson	\$17,460	\$0	\$17,460	\$16,471	\$0	\$16,471	\$989
Jewell	\$15,066	\$0	\$15,066	\$14,210	\$0	\$14,210	\$856
Johnson	\$14,382	\$0	\$14,382	\$13,564	\$0	\$13,564	\$818
Kearny	\$9,936	\$0	\$9,936	\$9,365	\$0	\$9,365	\$571
Kingman	\$15,066	\$0	\$15,066	\$14,210	\$0	\$14,210	\$856
Kiowa	\$13,698	\$0	\$13,698	\$12,918	\$0	\$12,918	\$780
Labette	\$14,382	\$0	\$14,382	\$13,564	\$0	\$13,564	\$818
Lane	\$9,594	\$0	\$9,594	\$9,042	\$0	\$9,042	\$552
Leavenworth	\$16,434	\$0	\$16,434	\$15,502	\$0	\$15,502	\$932
Lincoln	\$13,014	\$0	\$13,014	\$12,272	\$0	\$12,272	\$742
Linn	\$14,382	\$0	\$14,382	\$13,564	\$0	\$13,564	\$818
Logan	\$10,278	\$0	\$10,278	\$9,688	\$0	\$9,688	\$590
Lyon	\$18,486	\$0	\$18,486	\$17,440	\$0	\$17,440	\$1,046
Marion	\$16,434	\$0	\$16,434	\$15,502	\$0	\$15,502	\$932
Marshall	\$15,066	\$0	\$15,066	\$14,210	\$0	\$14,210	\$856
McPherson	\$13,698	\$0	\$13,698	\$12,918	\$0	\$12,918	\$780
Meade	\$10,278	\$0	\$10,278	\$9,688	\$0	\$9,688	\$590

FY 2017 NonPoint Source Pollution Control Program Allocations:							
April 25, 2016 SCC Meeting				\$1,357,350 - Total Available for Allocation			
FY 2016 Allocations				FY 2017 Allocations			
County	Base Cost-Share	Total TMDL	FY2016 Total Cost-Share	Base Cost-Share	Total TMDL	FY2017 Total Cost-Share	Inc/Dec
Miami	\$14,382	\$0	\$14,382	\$13,564	\$0	\$13,564	\$818
Mitchell	\$13,014	\$0	\$13,014	\$12,272	\$0	\$12,272	\$742
Montgomery	\$16,434	\$0	\$16,434	\$15,502	\$0	\$15,502	\$932
Morris	\$16,434	\$0	\$16,434	\$15,502	\$0	\$15,502	\$932
Morton	\$9,936	\$0	\$9,936	\$9,365	\$0	\$9,365	\$571
Nemaha	\$17,460	\$0	\$17,460	\$16,471	\$0	\$16,471	\$989
Neosho	\$14,382	\$0	\$14,382	\$13,564	\$0	\$13,564	\$818
Ness	\$11,646	\$0	\$11,646	\$10,980	\$0	\$10,980	\$666
Norton	\$13,698	\$0	\$13,698	\$12,918	\$0	\$12,918	\$780
Osage	\$17,460	\$0	\$17,460	\$16,471	\$0	\$16,471	\$989
Osborne	\$14,382	\$0	\$14,382	\$13,564	\$0	\$13,564	\$818
Ottawa	\$13,698	\$0	\$13,698	\$12,918	\$0	\$12,918	\$780
Pawnee	\$13,698	\$0	\$13,698	\$12,918	\$0	\$12,918	\$780
Phillips	\$13,698	\$0	\$13,698	\$12,918	\$0	\$12,918	\$780
Pottawatomie	\$17,460	\$0	\$17,460	\$16,471	\$0	\$16,471	\$989
Pratt	\$14,382	\$0	\$14,382	\$13,564	\$0	\$13,564	\$818
Rawlins	\$9,252	\$0	\$9,252	\$8,719	\$0	\$8,719	\$533
Reno	\$16,434	\$0	\$16,434	\$15,502	\$0	\$15,502	\$932
Republic	\$14,382	\$0	\$14,382	\$13,564	\$0	\$13,564	\$818
Rice	\$13,014	\$0	\$13,014	\$12,272	\$0	\$12,272	\$742
Riley	\$17,460	\$0	\$17,460	\$16,471	\$0	\$16,471	\$989
Rooks	\$12,330	\$0	\$12,330	\$11,626	\$0	\$11,626	\$704
Rush	\$12,330	\$0	\$12,330	\$11,626	\$0	\$11,626	\$704
Russell	\$13,698	\$0	\$13,698	\$12,918	\$0	\$12,918	\$780
Saline	\$14,382	\$0	\$14,382	\$13,564	\$0	\$13,564	\$818
Scott	\$9,936	\$0	\$9,936	\$9,365	\$0	\$9,365	\$571
Sedgwick	\$15,066	\$0	\$15,066	\$14,210	\$0	\$14,210	\$856
Seward	\$10,620	\$0	\$10,620	\$10,011	\$0	\$10,011	\$609
Shawnee	\$17,460	\$0	\$17,460	\$16,471	\$0	\$16,471	\$989
Sheridan	\$10,620	\$0	\$10,620	\$10,011	\$0	\$10,011	\$609
Sherman	\$9,936	\$0	\$9,936	\$9,365	\$0	\$9,365	\$571
Smith	\$14,382	\$0	\$14,382	\$13,564	\$0	\$13,564	\$818
Stafford	\$14,382	\$0	\$14,382	\$13,564	\$0	\$13,564	\$818
Stanton	\$9,252	\$0	\$9,252	\$8,719	\$0	\$8,719	\$533
Stevens	\$9,936	\$0	\$9,936	\$9,365	\$0	\$9,365	\$571
Sumner	\$13,698	\$0	\$13,698	\$12,918	\$0	\$12,918	\$780
Thomas	\$10,620	\$0	\$10,620	\$10,011	\$0	\$10,011	\$609
Trego	\$13,698	\$0	\$13,698	\$12,918	\$0	\$12,918	\$780
Wabaunsee	\$17,460	\$0	\$17,460	\$16,471	\$0	\$16,471	\$989
Wallace	\$10,278	\$0	\$10,278	\$9,688	\$0	\$9,688	\$590
Washington	\$14,382	\$0	\$14,382	\$13,564	\$0	\$13,564	\$818
Wichita	\$9,936	\$0	\$9,936	\$9,365	\$0	\$9,365	\$571
Wilson	\$14,382	\$0	\$14,382	\$13,564	\$0	\$13,564	\$818
Woodson	\$13,356	\$0	\$13,356	\$12,595	\$0	\$12,595	\$761
Wyandotte	\$12,364	\$0	\$12,364	\$11,617	\$0	\$11,617	\$747
TOTAL	\$1,439,350	\$0	\$1,439,350	\$1,357,350	\$0	\$1,357,350	\$82,000

	FY 2017		TMDL Allocation	\$90,000
NPS Base	\$1,357,350		Morris Twin Lakes Watershed	\$15,000
TMDL	\$90,000		Osage 110 Mile Creek Watershed	\$15,000
Total Allocation	\$1,447,350		Washington Peats Creek Watershed (2)	\$30,000
			Lyon Coal Creek Watershed	\$15,000
			Labette Labette Creek Watershed	\$15,000

KANSAS DEPARTMENT OF AGRICULTURE
DIVISION OF CONSERVATION

Watershed Dam Construction Program
2017 Applications for new Constructions

	District	Site	Co	RA	Cost-Share
1	Allen Creek WD 89	19	LY	NEO	\$120,000.00
2	Delaware WJD 10	D-23	JA	KAN	\$120,000.00
3	Delaware WJD 10	D-41	JA	KAN	\$120,000.00
4	Horseshoe Creek WD No. 110	4	WS	KAN	\$96,640.00
5	Horseshoe Creek WD No. 110	11	WS	KAN	\$52,000.00
6	Horseshoe Creek WD No. 110	18	MS	KAN	\$84,000.00
7	Horseshoe Creek WD No. 110	27	MS	KAN	\$64,000.00
8	Marmaton WJD 102	I-5	BB	MDC	\$120,000.00
9	Mill Creek WJD 85	37	WB	KAN	\$120,000.00
10	Mill Creek WJD 85	10A	WB	KAN	\$120,000.00
11	Nemaha-Brown WJD 7	13-28	NM	KAN	\$96,000.00
12	Pony Creek WJD 78	27	BR	MIS	\$120,000.00
Total =					\$1,232,640.00

Project Title: Effectiveness of short-term poultry litter storage options for protecting Kansas water quality.

Principle Investigator:

Peter J. Tomlinson, Assistant Professor, Department of Agronomy, Kansas State University, ptomlin@ksu.edu

Introduction and Justification:

Southeast Kansas has experienced an influx in poultry litter being transported into the region during the last five to seven years. This trend has been driven by increased environmental regulations in surrounding states and the recognition by Kansas producers that poultry litter can be a cost effective source of nutrients (N, P, K and micro-nutrients) and organic matter. Poultry integrators began establishing litter export programs in nutrient sensitive watersheds in Arkansas and Oklahoma as early as 2005. It has been reported that more than 100,000 tons of poultry litter are exported annually from the Illinois River Watershed in Arkansas and Oklahoma with most of this material going to Kansas and central Oklahoma (Herron et al., 2012).

Poultry litter can provide a significant and important supply of nutrients for crop production. Phosphorus (P) content in poultry litter is usually high (≈ 60 lbs P_2O_5 /ton), and application rates should be based on P levels to avoid building excessive soil P levels contributing to potential surface water contamination. When properly managed it provides an excellent complement to commercial nitrogen (N) fertilizers. Between roughly 2011 and 2013 concern grew in Kansas that the influx of poultry litter was contributing to water quality problems. Storage of poultry litter on the edge of fields in close proximity to ditches and waterways was a contributing factor (Figure 1). Currently, no recommended practices, guidelines or regulations exist for the storage of poultry litter.

A critical research need exists to evaluate poultry litter storage best management practices that effectively control runoff and minimize the transport of nutrients to the waters of Kansas.

This research need is further supported by producer requests for information on effective poultry litter storage options. Limited research is available on effective best management practices for in-field poultry litter storage since historically poultry litter has been hauled directly from the poultry house to the field or stored on farm in a litter stacking shed. Arkansas and Oklahoma regulation discourage the outside storage of poultry litter and require outside poultry litter piles to be covered. Covering poultry litter with plastic is highly effective at reducing volatilization of ammonia, leaching



Figure 1. Poultry litter stored at the edge of a field with runoff flowing to the adjacent road ditch.

Effectiveness of improved poultry litter storage options for protecting Kansas water quality.

of nitrate and the loss of N and P via runoff (Payne and Zhang, 2012); however, this practice presents a number of technical challenges for Kansas producers because of the periods of time litter is stored prior to application.

Project Goals and Objectives:

The goal of the proposed project continuation is to increase the confidence in the data and understanding of the effectiveness of improved temporary storage demonstration sites for controlling runoff losses of N and P.

The specific project objectives are:

1. Evaluate effectiveness of improved temporary poultry litter storage sites for the reduction of runoff nutrient loss.

To accomplish the research objectives runoff volume and nutrient losses will be evaluated for two additional years through April of 2018 from two improved temporary poultry litter storage demonstration sites, one with cropland buffer and a second site with a grassland buffer.

Procedures:

- A. Improved Poultry Litter Storage Sites: Starting in the fall of 2013, Spring and Middle Neosho WRAPS provided cost share funding for the construction of improved temporary poultry litter storage demonstration sites. One of these sites was equipped to evaluate edge of field nutrient losses in 2014 and a second site will be equipped in 2016. Diversionary structures will divert runoff from natural rainfall events to a central location of the pad and defined buffer at each site for the collection of flow-weighted composite water samples using automated water samplers. Water samples will be analyzed for total N, nitrate, ammonium, and total and dissolved P.
- B. Technology Transfer: Poultry litter storage options will be showcased in K-State Research and Extension programs including producer field days. Furthermore, the data generated by this project will be published in an M.S. student's thesis, peer reviewed publications, research conference proceedings and used to develop new Extension presentations and print materials.

Duration of the Project Continuation:

This two year project extension will continue the project through May 31, 2018.

Expected Outputs and Outcomes:

This project will provide critically needed information on simple cost effective containment options producers can use to control the runoff from poultry litter, temporarily stored at the edge of fields. Additionally, we will evaluate the effectiveness of improved temporary poultry litter storage sites with the goal of generating sufficient

Effectiveness of improved poultry litter storage options for protecting Kansas water quality.

data to support the development of technical standards for the Natural Resource Conservation Service.

Project outputs will include graduate student training, M.S. thesis, Extension presentations, and research and Extension publications. Additionally the project PI will prepare annual reports detailing research progress, findings and technology transfer.

References:

- Herron, S, A. Sharpley, S Watkins, and M. Daniels. 2012. Poultry Litter Management in the Illinois River Watershed of Arkansas and Oklahoma. Cooperative Extension Service, Division of Agriculture, University of Arkansas. Fact Sheet FSA9535. 4 pages.
- Payne and Zhang. 2012. Poultry Litter Nutrient Management: A Guide for Producers and Applicators. Cooperative Extension Service, Oklahoma State University. Fact Sheet E-1027. 12 pages.

Effectiveness of improved poultry litter storage options for protecting Kansas water quality.

Proposed Project Budget – 2 year continuation:

Total: \$80,000 (\$40,000/year for 2 years). These funds will be used to support a graduate student and an undergraduate student.

Proposed Budget Summary	Year 1	Year 2	Totals
A. Salaries and Wages:			
Graduate Student	\$28000	\$28000	\$56000
Undergraduate Student	\$2500	\$2500	\$5000
B. Fringe Benefits (5.9% for graduate students and 1.0% for undergraduate student)	\$1652	\$1652	\$3304
C. Travel (Mileage to and from the field site in both years and funds for the graduate student to attend a professional meeting in year two to present research results.)	\$4500	\$4500	\$9000
D. Other Direct Costs			
Material and Supplies (Containment and water diversion materials and fuel for equipment. Expendable research supplies for sample collection and processing.)	\$1123	\$1123	\$2246
Other - Contractual Services (Soil Testing Lab - Cost calculated based on the established fee schedule for water analysis)	\$2200	\$2200	\$4400
E. Total Amount of This Request	\$40000	\$40000	\$80000

**In Support of Interstate Collaboration:
Improved Water Quality Management Practices in the
Arkansas River Valley between
Hasty, Colorado and Lakin, Kansas**

The waters of the Arkansas River in Eastern Colorado and Western Kansas are extremely saline (high in Total Dissolved Solids with excessive amounts of sodium, sulfate, and chloride). Natural occurrences of selenium and uranium are being concentrated beyond usable levels because of the historically developed irrigation return-flow practices in the region as well as the high evapo-transpiration characteristics of the valley. In general, traditional irrigation diversions in conjunction with increasing phreatophyte infestations are continuing to distill and re-distill the residual dissolved salts into already degraded waters that remain to flow on (to the detriment of downstream users).

Impairments to municipal, industrial and agricultural sources of water are of particular and immediate, significant concern to the socio-economic viability of the area. Interstate cooperation and collaboration is needed to manage the poor quality water that is impacting and threatening wells all along the Arkansas River corridor.

Officials from both states have expressed heightened interests in implementing objective driven strategies to reverse water quality deterioration. Both states wish to improve water quality attributes while simultaneously avoiding any legal entanglements associated with the Arkansas River Compact. More voluntary, incentive-based programs such as the Regional Conservation Partnership Program (RCP) and Conservation Reserve Enhancement Program (CREP) have recently been emerging and have the potential to provide a mutually attractive and beneficial program opportunity for Colorado and Kansas.

One approach to formulating a first step, joint venture would be to initiate a clear and understandable proposal with a project scope which initially addresses a conservative geographic area with narrowly focused management strategies / practices. [Even as a pilot program, the project might wish to incorporate the intention and opportunity to add additional phases, areas and practices if the original model is successful – this would encourage goal-setting, benchmarking and milestone motivation settings.]

The purpose of the start-up project would be twofold – 1) to create a bridge of mutual understanding, appreciation and concern for the future longevity and well-being of the two neighboring states (common ground); and 2) to physically improve the chemistry and usability of the area's natural water resources for the health, safety and welfare of its citizens and water using communities, particularly between the outlet of John Martin Reservoir near Hasty, Colorado and the Bear Creek Fault near Lakin, Kansas.

If an appropriate program vehicle can be identified to facilitate such a joint venture, the practices to be promoted under this proposal would emphasize nutrient management with "Impaired Water Quality" as the primary resource concern. It seems very likely that a secondary resource concern of "Inadequate Wildlife Habitat" could also be associated with many of the beneficial water quality practices to give the proposal a more wide-based customer appeal.

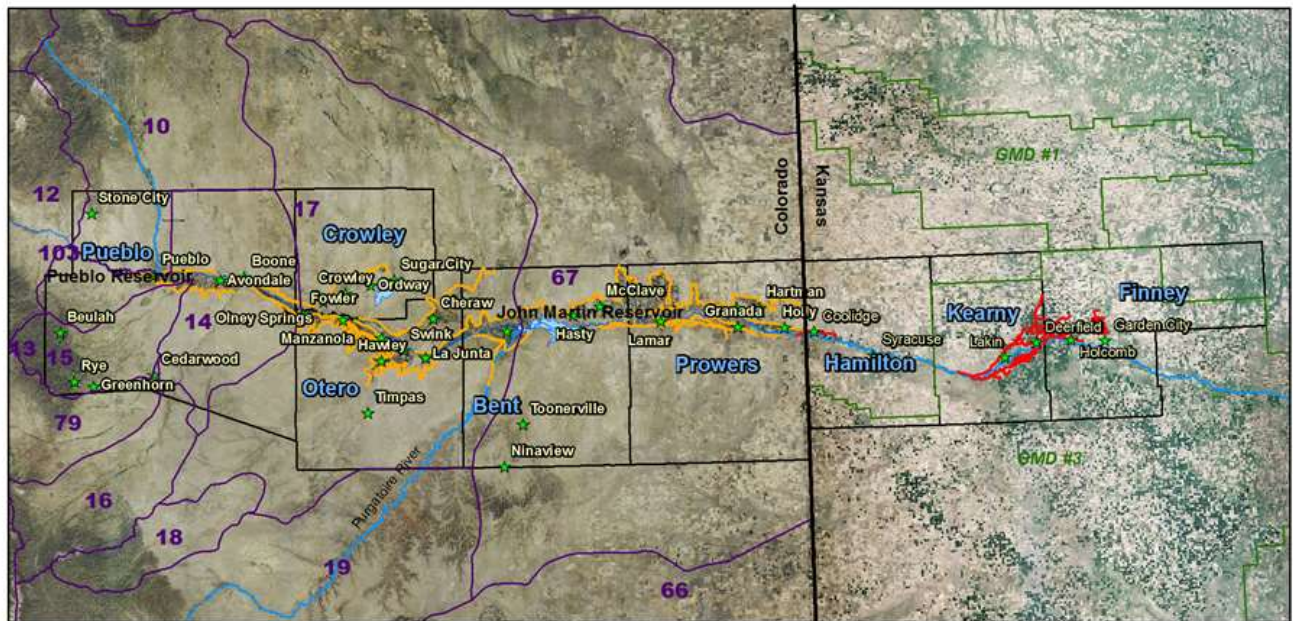
Some relevant practices to consider and include might be as follows:

- 1) BMPs for Water Quality
 - a) Conservation Crop Rotation (increase crop diversity and soil organic matter)
 - b) Residue and Tillage Management (reduce soil disturbance, increase soil organic matter)
 - c) Cover Crop (increase soil organic matter and infiltration)

- d) Critical Area Planting
 - e) Mulching
 - f) Nutrient Management
 - g) Salinity and Sodic Soil Management
 - h) Brush Management
 - i) ?
- 2) BMPs for Wildlife Habitat
- a) Wetland Restoration
 - b) Constructed Wetland
 - c) Grass Filter Strip
 - d) Upland Wildlife Habitat Management
 - e) Wetland Wildlife Management
 - f) Buffer Establishment on Wetlands and Playas
 - g) ?

Landowners could learn about opportunities for enrollment through the resources of Conservation Districts, Water Conservancy Districts, Groundwater Management Districts, state agencies, and associations. These organizations could also potentially serve as partnering entities in the proposal for contributing financial, technical and educational resources to a project. A possible geographic target for the initial project proposal might include the general county areas between Hasty, Colorado and Lakin, Kansas as shown on this map:

Arkansas River Basin Irrigation Ditches Within Colorado and Kansas



Legend

- Kansas Groundwater Management Districts
- Colorado Division 2 Districts
- Kansas Ditches
- Colorado Ditches



Kansas Department of Agriculture
Division of Water Resources
October 20, 2015

Practices to Improve Water Quality in the Arkansas River Basin

Structural Practices

433 Surface Irrigation
442 Sprinkler System
441 SDI
430 Pipeline
428 Irrigation Ditch Lining
464 Irrigation Land Leveling
587 Structure for Water Control
606 Subsurface Drain
533 Pumping Plant
436 Irrigation Reservoir
351 Water Well Decommissioning
646 Shallow Water Development & Mgmt
656 Constructed Wetland
580 Streambank/Shoreline Protection
657 Wetland Restoration
658 Wetland Creation
659 Wetland Enhancement

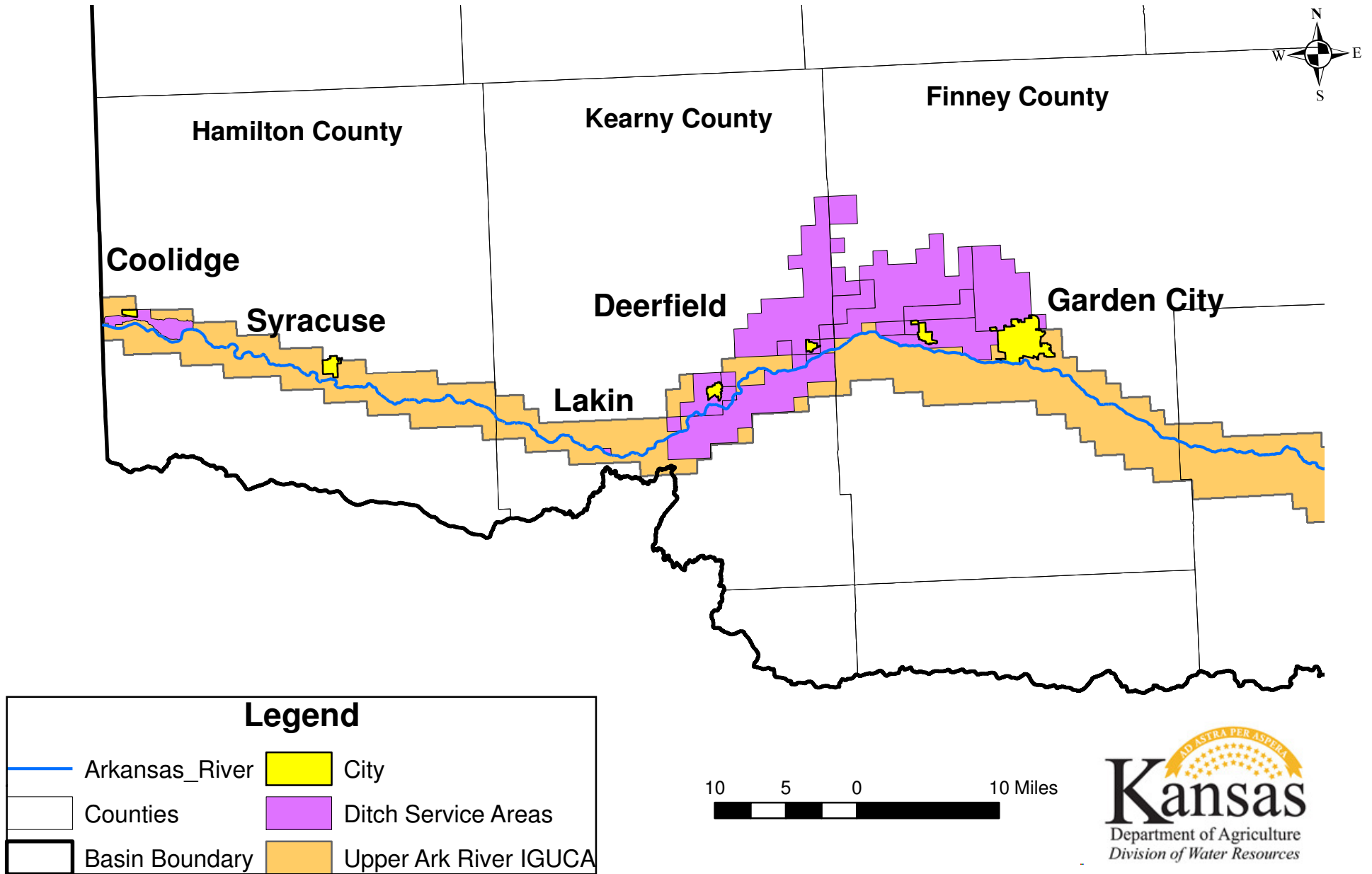
Management Practices

610 Salinity and Sodic Soil Management
449 Irrigation Water Management
590 Nutrient Management
595 Integrated Pest Management
329 Residue & Tillage Management, No Till/Strip Till/Direct Seed
345 Residue & Tillage Management, Mulch Till
328 Conservation Crop Rotation
645 Upland Wildlife Habitat Management
644 Wetland Wildlife Habitat Management
355 Water Well Testing

Vegetative Practices

450 Anionic Polyacrylamide (PAM) Application
340 Cover Crop
390 Riparian Herbaceous Cover
601 Vegetative Barrier
393 Filter Strip
512 Forage & Biomass Planting
327 Conservation Cover
342 Critical Area Seeding
550 Range Planting

Upper Arkansas River Basin in Kansas



NRCS HIGHLIGHTS OF ACTIVITIES
for the
STATE CONSERVATION COMMISSION
MANHATTAN, KANSAS
April 25, 2016

OPERATIONS

- The following personnel changes have been made within the Natural Resources Conservation Service (NRCS) supervisory positions:
 - o Larry Meili, District Conservationist, Phillipsburg, retired effective February 2, 2016.
 - o Teresa Harrington, GIS Specialist, State Office, transferred to Fort Collins, Colorado, effective February 7, 2016.
 - o Tyler Labenz, Resource Soil Scientist, Hutchinson Area Office, will be the acting state soil scientist for a period of 30 days beginning April 3.
 - o Ed Radatz, Hydraulic Engineer, State Office, retired effective April 2, 2016.
 - o Richard (Rich) A. Wynia, Manhattan Plant Materials Center (PMC) Manager, died April 3, 2016. Mark A. Janzen, Natural Resource Specialist, State Office, will be acting manager until further notice.
- We are continuing to work on filling vacancies. We have advertised and interviewed for four student interns and six recent graduate positions.

PROGRAMS

Easement Programs

- **Agricultural Conservation Easement Program-Agricultural Land Easements (ACEP-ALE) and Agricultural Conservation Easement Program-Wetland Reserve Easements (ACEP-WRE)**
 - o All 13 fiscal year (FY) 2014 ACEP-WRE enrollments have now been acquired. FY2015 ACEP-WRE enrollments are currently having boundary survey work completed. ACEP-WRE wetland restoration has begun on one of the 2014 enrollments.
 - o FY2016 ACEP-WRE applications continue to be accepted. Currently nine new applications have been received. Five applications are being considered for enrollment at this time.
- **Wetlands Reserve Program (WRP)**

Restoration work is being completed on the final 8 WRP easements that will restore or protect 822 acres of wetlands.
- **Farm and Ranch Lands Protection Program (FRPP)**

Three parcels remain to be closed on this FY. Once these are closed, Kansas will have 40 FRPP easements on 39,840 acres.

Emergency Watershed Protection Program (EWPP)

- Kansas NRCS recently received funded approval notification for the city of Sedgwick, Sand Creek streambank stabilization and debris removal project. NRCS will be assisting with design and providing up to 75 per cent of the project cost currently approved at \$40,000.
- The EWPP purpose is to assist project sponsors in implementing emergency recovery measures to relieve imminent hazards to life or property created by a natural disaster that caused a sudden impairment of a watershed.

Environmental Quality Incentive Program (EQIP)

- EQIP application cutoff date for FY2016 is April 22. All contracts will be obligated by August 1.
- This year's initiatives and funding levels as recommended by the Kansas Technical Committee:
 - o National Water Quality Initiative (NWQI) \$683,168
 - o National Organic Initiative \$50,000
 - o National On-Farm Energy Initiative \$100,000
 - o High Tunnel System Initiative \$300,000
 - o Ogallala Aquifer Initiative \$1,100,000
 - o Working Lands for Wildlife-Lessor Prairie Chicken Initiative \$384,041
- National Water Quality Incentive project meetings are scheduled for July 6 (Big Creek), July 7 (Emma Creek), and July 8 (Grasshopper Creek).

Watershed Rehabilitation Program Activities

- Rehabilitation planning for five watershed dams in Butler County continues and supplements to the NRCS Work Plans are on track to be completed this FY. To date three of the four watershed districts involved have selected their preferred alternatives which are federal alternatives. A public meeting and preferred alternative selection for the remaining two dams is planned in the next 30 days.
- Kansas NRCS submitted a funding request to national headquarters for Dam Assessments on ten federally assisted dams for FY16 consideration.

TECHNOLOGY

Engineering

- Curtis Janssen, State Conservation Engineer, and Larry Schieferecke, Civil Engineer, traveled to Garden City to meet with Kelly Klausmeyer, Area Engineer, Hays to discuss progress of the RCPP GMD 3 irrigation project with a producer and also the GMD3. They also met with KSU Extension to discuss Mobile Drip Irrigation (MDI) technology and study the MDI installed on one of their sprinklers.
- A Light Detection and Ranging (LiDAR) committee meeting was held recently to discuss the status of LiDAR, future direction, and action items for moving forward. LiDAR has been a tremendous tool for engineers and planners in the field as well as for engineers and others in the state office.

Programs

- Kansas Technical Committee (KTC) Sub-Committee meetings are TENTATIVELY scheduled for the week of June 20.
- Full KTC meeting is TENTATIVELY scheduled for July 20.

Resources

- Resources and Programs Staffs are working with the Farm Service Agency (FSA) in delivering wildfire assistance—technical and financial—to assist in recovery.
- Staff continues to work with numerous partners at many levels to learn, develop, instruct and deliver sound technical information to continue long-term conservation.

Soils

- The Soils Section is scheduling a Soils 101 course for newer employees which will be this summer. Soils 101 is a 3-day training which includes topics on the History of Soil Survey, Soil Formation, Understanding a Map Unit, Wetland Soils, Soil Interpretations, Soils in Engineering, and Soil Mapping.
- The NRCS Supplemental Survey for the second national cropland assessment of the Conservation Effects Assessment Project (CEAP) will be completed by April 29. For CEAP NRCS Supplemental Survey, NRCS field office staff collected data related to conservation planning and practices applied at 506 National Resource Inventory (NRI) point locations in Kansas. This year's CEAP survey is designed to provide an evaluation of the trends in and effects of management and conservation practices put in place. Data will be collected on conservation practices, the Conservation Reserve Program, cropping and tillage, pesticide applications, livestock manure applications, irrigation, field operations, size of operation, and more to help assess changes that have occurred since the first NRI-CEAP Cropland National Assessment in 2003-2006.
- Grazing Lands National Resource Inventory (NRI) calibration training is scheduled for May 25-26 in Manhattan. This year marks the 14th year in a multi-year effort to collect field data on grasslands. For FY2016, Kansas will collect data on approximately 188 rangeland and pastureland sites in Kansas. The NRI program helps NRCS better understand the condition and trend of our natural resources.
- In April and May, Dale Younker, Soil Health Specialist, Garden City, will be collecting soil samples for the Kansas Soil Health Nutrient Tool Validation Project. The Soil Health Nutrient Management Tool is a soil testing procedure developed by Dr. Rick Haney, Soil Scientist, at the USDA, Agricultural Research Service, Grassland Soil and Water Research Laboratory, Temple, Texas. The soil test not only looks at the inorganic elements of the soil but also accounts for organic forms of carbon, nitrogen, and phosphorus along with the amount of biological activity in the soil. The test also provides a score that is an indicator of the overall health of the soil. The test has been proven to save a substantial amount of fertilizer cost when the recommendations have been followed. There are currently 25 cooperator producers with 72 active fields or subfields involved in the study. Of those, 18 are associated with rangeland fields and 54 with cropped fields.

Watershed Operations

- Kansas ranks 3rd nationally for the number of federally assisted flood control dams. Currently 651 of the 835 dams constructed remain under active Operation and Maintenance

Agreements with local sponsors, typically watershed districts. Annual Dam Safety Inspections are required each calendar year.

- Three operation and maintenance (O&M) workshops were conducted this past week throughout the state. Local watershed district representatives, NRCS field staff and conservation partners involved with dam inspections participated. The training was conducted by Kansas Watershed Partnership, which includes the Kansas Department of Agriculture's Division of Conservation and Division of Water Resources, the State Association of Kansas Watersheds, and NRCS.

OUTREACH

- **News Releases:**
 - USDA Commits \$20 Million to Innovative Conservation Projects
 - Kansas NRCS Announces National Conservation Initiatives for 2016
 - Recovering from a Wildfire, NRCS Can Help
 - NRCS Seeks Partner Proposals to Protect and Restore Critical Wetlands in Kansas
- Assisting with Envirothon April 27, 2016 (e.g., pictures).
- Push to get public service announcements on soil health created by national NRCS office playtime on Kansas TV stations.
- NRCS sponsored a booth display at the following conferences:
 - SAKW Annual Conference, Topeka–January 19-20
 - No Till on the Plains, Salina–January 26-27
 - Women Managing the Farm, Manhattan–February 4-5
 - Kansas Natural Resources Conference, Wichita–February 4-5
 - Mid America Farm Expo, Salina—March 29, 30, and 31

Blue Ribbon Task Force

<http://www.kwo.org/BlueRibbonTaskForce.html>

Blue Ribbon Task Force Public Input Meeting - April 19, 2016
- 9:00 a.m. - 12:00 p.m. AGENDA

<i>Public Input Testimony</i>			
<u>Funding</u> (written)	<u>Funding</u>	<u>Water Conservation</u> (written)	<u>Water Conservation</u>
<u>Technology & Crop Variety</u> (written)	<u>Technology & Crop Variety</u>	<u>Additional Sources</u>	<u>Education</u> (written)
<u>Education</u>	<u>March Follow-Up</u>		

Past Meetings

Blue Ribbon Task Force Meeting - January 29, 2016, 9:30 am, Landon State Office Building, Room 509, 900 SW Jackson, Topeka, KS

Kansas Water Plan Fund Average Annual Revenue by County and Source

Blue Ribbon Task Force (BRTF) Meeting - March 18, 2016 - 1:00 p.m. - 3:00 p.m., Charles Curtis State Office Building, Room 540, 1000 SW Jackson Street, Topeka, KS - Agenda

- PowerPoint - Blue Ribbon Funding Task Force Known Funding Demands - March 2016

- Water Funding Alternatives - March 2016

2015 Marketing Revenue

