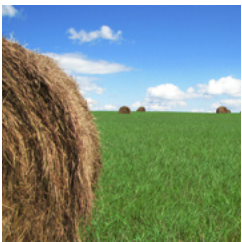
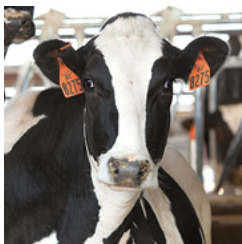




2018 ANNUAL REPORT

The Kansas Department of Agriculture



KANSAS DEPARTMENT of AGRICULTURE

2018 ANNUAL REPORT

The Kansas Department of Agriculture is the state agency devoted to the total support of agriculture in Kansas. The department works for the entire Kansas agriculture sector, including farmers, ranchers, agribusinesses and food establishments. KDA is dedicated to providing support and assistance to make Kansas businesses successful and encouraging more farms, ranches and other agriculture businesses to expand in or relocate to Kansas.

KDA is made up of a variety of divisions and programs that perform different administrative, marketing, regulatory and other services. Included in this annual report are highlights achieved by those divisions and programs in 2018.

KDA Divisions and Programs

Administrative Services

- Communications
- Emergency Management
- Fiscal
- Human Resources
- Information Technology
- Legal
- Office of the Secretary

Agricultural Business Services

- Agricultural Laboratory
- Dairy and Feed Safety
- Food Safety and Lodging
- Grain Warehouse
- Meat and Poultry
- Pesticide and Fertilizer
- Plant Protection and Weed Control
- Weights and Measures

Agricultural Marketing

- Agribusiness Development
- Economics and Statistics
- International Marketing
- Trademark
- Workforce Development

Animal Health

- Animal Disease Control
- Animal Facilities
- Brands

Conservation

Water Resources

- Water Appropriation
- Water Management Services
- Water Structures

The Kansas Department of Agriculture is guided by the agency's purpose, vision, mission, goals and objectives, as outlined on the opposite page.

In addition, each program area defines goals and objectives for that specific program, including indicators which are tracked to measure progress throughout the year. This KDA Annual Report reflects highlights from each program's objectives throughout 2018.



Dr. Jeff Colyer
Governor, State of Kansas



900 SW Jackson
Topeka, KS 66612
785-296-3556

1320 Research Park Drive
Manhattan, KS 66502
785-564-6700

www.agriculture.ks.gov



Jackie McClaskey
Secretary of Agriculture



PURPOSE:

To serve, promote and grow the state's largest industry.

VISION:

Kansas will provide an ideal environment for long-term, sustainable agricultural prosperity and statewide economic growth.

MISSION:

The Kansas Department of Agriculture is committed to a balanced approach of:

- **Serving** Kansas farmers, ranchers, agribusinesses and the consumers/customers they serve;
- **Providing** an environment that enhances and encourages economic growth of the agriculture industry and the Kansas economy; and
- **Advocating** for and promoting the agriculture industry, the state's largest industry, employer and economic contributor; while
- **Helping** to ensure a safe food supply, protecting natural resources, promoting public health and safety, protecting animal health, and providing consumer protection to the best of our ability.



AGENCY GOALS:

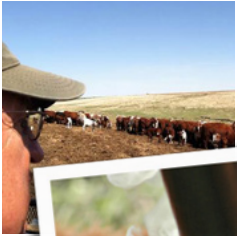
The Kansas Department of Agriculture will achieve its vision and mission by:

- Creating a "best-in-state plus" work force and a work environment with a positive culture and attitude;
- Working diligently to make the agency more innovative and efficient while streamlining program operations;
- Fulfilling and upholding statutory and regulatory obligations fairly, transparently, efficiently and effectively;
- Working with industry partners to guarantee the interests of Kansas and the agriculture industry are considered in state and federal policy decisions;
- Providing customer support, timely responsiveness, educational resources, and critical information to all Kansans;
- Broadening the understanding and appreciation of agriculture and its economic contribution amongst Kansas citizens;
- Providing support and assistance to help make Kansas businesses more successful, grow rural communities, expand markets for Kansas agricultural products, level the playing field, grow the agricultural workforce, and encourage more farms, ranches and other agriculture businesses to expand in or relocate to Kansas; and
- Being a model state agency.

AGENCY PRIORITY OBJECTIVES:

In order to achieve our agency goals and maintain an achievable focus, the following objectives are considered top priority:

- Improving customer service and compliance education for all customers and licensees;
- Streamlining and automating internal and external systems and continuing to identify opportunities for program and agency efficiencies in daily business activities;
- Performing daily responsibilities effectively and efficiently with a focus on customers served and cross training when appropriate;
- Evaluating and adjusting program, division and agency structure to continually improve effectiveness and efficiency;
- Eliminating unnecessary and outdated regulations and/or agency activities;
- Enhancing internal communications and professional development opportunities for agency staff;
- Recruiting and retaining high quality employees — the right people, doing the right thing, with the right attitude;
- Continuing to build upon a commonsense policy and regulatory agenda and influencing federal policy issues in accordance with industry needs and interests;
- Growing agriculture in the state, eliminating barriers to growth, developing workforce and building marketing activities in-state, out-of-state and globally;
- Developing strategic partnerships with Kansas State University and other potential partners to better serve Kansans and the agriculture industry; and
- Advocating for agriculture at all levels and providing industry outreach.



ANIMAL HEALTH: *Streamlining the Brands Program*

The Kansas Brands Program has been in effect since 1939 and has more than 17,000 actively registered brands. In 2018, the program was updated and streamlined, moving the administrative work from a combination of paper, an Access database, and a web-based platform to a system that is almost completely web-based. For the 2018 renewal period, although less than 2 percent of brands had email addresses associated with their accounts, nearly half of all brands were renewed online.

ANIMAL HEALTH: *CVI*

The Division of Animal Health works to protect the health, safety and welfare of Kansas' citizens and animals through prevention, control and eradication of infectious and contagious diseases and conditions. Having an accurate vision of animals imported into our state helps protect the state's overall herd health. In 2018, the program processed more than 31,000 export Certificates of Veterinary Inspection and commuter herd movements for livestock and pet animals moving out of our state.

DIVISION OF CONSERVATION: *New Online Systems*

New upgrades to DOC's automated online licensing, reporting system and payment, RALIS, will make customer filing requirements easier and much more efficient. The online licensing and tonnage reporting portion was the first to be completed two years ago; the online payment system and an interactive map will soon complete the multiyear project.

GRAIN WAREHOUSE: *Grain Storage*

The grain warehouse inspection program works to protect depositors of grain in public warehouses from losses due to fraud and inventory mismanagement by ensuring warehouses maintain accurate records and maintain the condition of stored grain. During the past year, the program upgraded its auditing software, which will enable to the program to operate more safely and efficiently. The program will allow the direct import of storage data from the grain warehouses and allows the use of laser measuring devices, decreasing the need to enter grain bins for measuring. In 2018, the state program licensed 78 grain warehouses, with licensed capacity nearing one half a billion bushels.



AG MARKETING: *Economist/Statistician*

The KDA economist provided administrative support to the Servicemember Agricultural Vocation Education (SAVE) Farming of the Future USDA Beginning Farmer and Ranch Program grant designed to train 170 transitioning service members or veterans in maintaining cropland, rangeland and livestock. Additionally, the grant provides assistance in the transition for current members of the service and current veterans as well as expands SAVE's current apprenticeship program to additional regional locations.

PESTICIDE AND FERTILIZER: *Orphaned Pesticide Grant*

2018 was the second year of a two-year EPA-funded grant from the Kansas Department of Health and Environment for the waste disposal of orphaned pesticide products. To implement this disposal opportunity, we partnered with K-State Research and Extension, Farm Bureau, KFSa, KARA, KDHE and Clean Harbors. Through these efforts, individuals, pesticide dealers and applicators were able to dispose of pesticide products at no cost which would have otherwise required paying for hazardous waste packaging, handling and disposal. Some of the more hazardous products included the disposal of two compressed cylinders and 52 quarts of chloropicrin as well as 15 gallons of methyl parathion. The program was enthusiastically received. Requests continue to be received for orphaned product disposal but funding has been exhausted; efforts to find permanent funding are being pursued.



Our mission includes **SERVING** Kansas farmers, ranchers, agribusinesses and the consumers/customers they serve.

FOOD SAFETY AND LODGING: *Online Renewal*

80% of license renewals were conducted online in 2018. Prior to online renewals, the program would mail paper renewals, customers would have to mail them back, we would have to have fiscal process the payment, then the program had to process the same payment. We then had to print out the renewed license and mail it to the facility. With online renewals, the payments are processed in both the fiscal system and the programs system and it automatically emails the renewed license to the customer. This saved our program and agency thousands of staff hours and corresponding expenses.

AG MARKETING: *From the Land of Kansas; 40th Year*

From the Land of Kansas, Kansas' trademark program, celebrated its 40th year in 2018 with a yearlong campaign, including a member celebration in the Capitol Rotunda featuring 22 members, a Chef Alli pressure cooker class at Manhattan Meat Market, a Taste of Kansas Dinner in WaKeeney with more than 70 attendees, and the creation of a 40th Anniversary e-cookbook.

AG MARKETING:

From the Land of Kansas: Member Opportunities

The trademark program coordinated and hosted five Kansas Farmers' Market workshops in partnership with K-State Research and Extension. The events welcomed 339 attendees to workshops in Colby, Great Bend, Wichita, Olathe and Chanute. The new online shopping site at Shop.FromtheLandofKansas.com was recognized at the North American Agricultural Marketing Officials (NAAMO) annual meeting in Calgary as a Finalist for the Marketer of the Year Award. Several members participated in the From the Land of Kansas Konza/Ad Astra Holiday Gift Box Program, which sold out in December with a total of 760 gift boxes sold.

FEED SAFETY: *Outreach*

Hosted a Preventive Controls Qualified Individual Training and offering online modules to all licensees to prepare for compliance with Food Safety Modernization Act. We continue to direct people to our website to use the FSMA training modules shared there if they have questions on how FSMA will impact their facility. Those modules are free to Kansas licensees. The program also participated in the Food Safety Task Force meetings hosted by the food safety and lodging program, presenting information about diversion of human foods to animal foods and labeling requirements.

PESTICIDE AND

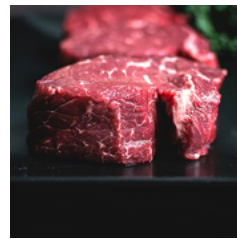
FERTILIZER: *Dicamba*

Dicamba has received much attention due to the recently introduced low volatile products of Engenia, FeXapan and Xtendimax with VaporGrip Technology for use on dicamba-tolerant beans. An informational webpage was added to the Pesticide and Fertilizer section on the KDA website during 2018. We reviewed applicator training programs presented by K-State Research and Extension, BASF, Monsanto and DuPont Pioneer where over 4,000 applicators received training. Although still significant, the number of calls received by the program regarding dicamba decreased considerably during 2018.

WATER APPROPRIATION:

Online Water Use Reporting

About 27 percent of water users used KDA's online water use reporting system in 2018. To increase participation, KDA has imposed a \$20 paper filing fee.



FOOD SAFETY AND LODGING:

Educational Materials in Chinese
With the growing need for education and training in Chinese, the food safety and lodging program worked with Kansas State University to translate the program's food safety educational handouts into Mandarin. We have also conducted multiple face to face Focus on Food Safety training sessions in Mandarin.

ANIMAL HEALTH: Traceability Performance Measures

Animal disease traceability — knowing where diseased and at-risk animals are, where they've been, and when — is important to ensure a rapid response during an animal disease event. An efficient and accurate traceability system helps reduce the number of animals involved in an investigation, reduces the time needed to respond, and decreases the cost to producers and the government. DAH has worked to minimize the time it takes to do a trace by moving to electronic movement documents and expediting data entry processes.

ANIMAL HEALTH: *CattleTrace Pilot Project*

CattleTrace is a public-private partnership which will develop and test a purpose-built cattle disease traceability infrastructure in Kansas that will guide discussion and development of traceability on a national scale. Cattle disease traceability is an important component in the overall biosecurity of the U.S. beef cattle industry, playing a significant role in resuming and maintaining commerce in the event of a disease outbreak. CattleTrace is a collaborative partnership between Kansas State University, the Kansas Livestock Association, the Kansas Department of Agriculture, USDA, and individual producer stakeholders.



PLANT PROTECTION AND WEED CONTROL:

Industrial Hemp Research Program

With the passage of Senate Bill 263, The Alternative Crop Research Act, the department was given the responsibility of developing the regulations necessary to create the Industrial Hemp Research Program. KDA hosted and attended numerous stakeholder meetings throughout 2018 to gather input for the development of the program. Regulations became effective the first week in February, allowing for licenses to be issued for the 2019 growing season.

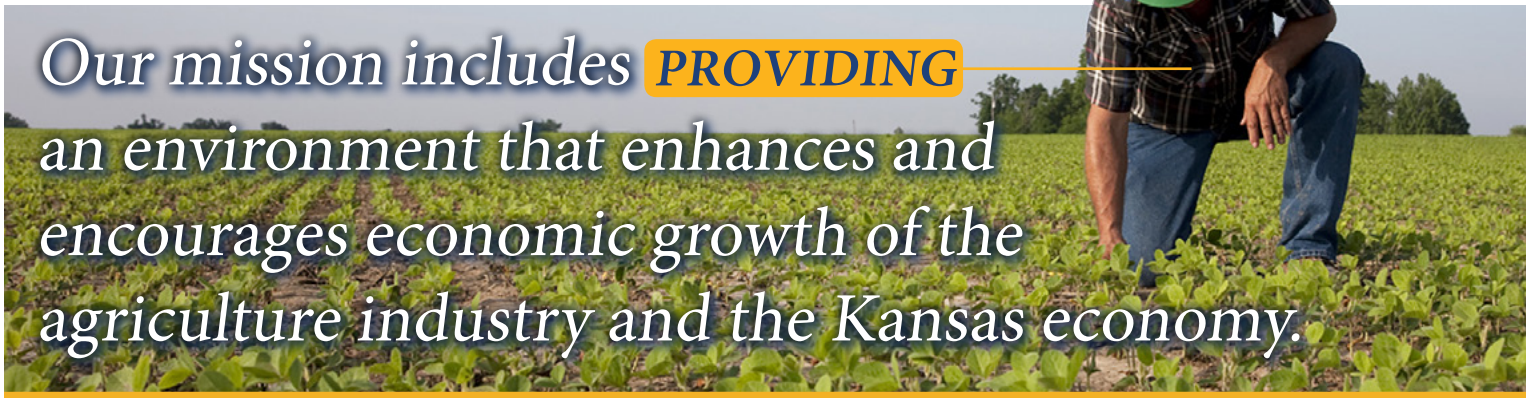
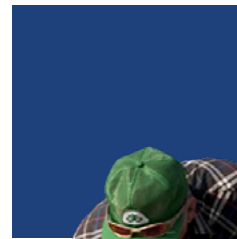
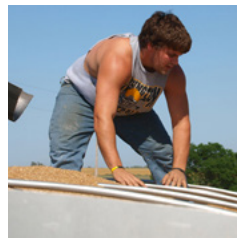
PLANT PROTECTION AND WEED CONTROL:

Export Inspections

Inspection services for Kansas-produced commodities destined for export ensures pest-freedom requirements of the importing country are met, so that the Kansas export market continues to run smoothly. In 2017, the program saw a 24 percent increase in the number of requested inspections and met the demand while continuing to complete all inspections in a timely manner. The number of export inspections has steadily increased over the last 3 years, up 175 percent from 2014.

MEAT AND POULTRY: *Inspection Jurisdiction*

This Kansas program operates under a cooperative agreement with the U.S. Department of Agriculture. The purpose of the cooperative agreement is to establish a meat and poultry inspection system that is "equal to" the federal inspection system, as required by federal law. Maintaining this status is important from a food safety perspective, as well as from a market perspective. State programs typically provide inspection services to small meat and poultry establishments often in rural areas of the state. These plants provide a valuable service to Kansas' smaller communities and contribute to local economies by providing jobs and a market for livestock farmers and ranchers.



Our mission includes **PROVIDING** an environment that enhances and encourages economic growth of the agriculture industry and the Kansas economy.

AG MARKETING:

Student Intern Program

KDA is committed to providing opportunities for tomorrow's agriculture leaders, which includes strong participation in the Governor's Internship Program. In 2018, KDA employed 16-19 interns each academic term (fall, spring and summer). Student interns play a valuable role across the agency, offering unique talents and skills in specific program areas including marketing, communications and legal. Meanwhile, the students receive an introduction to state government, professional careers and agriculture across the spectrum of the industry.

AG MARKETING:

Workforce Development

The ag workforce development team focused on the value of hands-on and work-based learning such as internships and job shadowing to strengthen the agricultural workforce in the state. An Ag Tech Field Day with Carl's Sales and Service, Inc., in Thayer, Kansas, provided 21 students from four high schools with a hands-on shadowing encounter with equipment dealers, salesmen, parts managers and mechanics. Work-based learning guidelines developed in cooperation with Governors Education Council. In addition, the team presented agriculture career opportunities as Kansas Department of Agriculture opportunities to 47 groups/schools, reaching over 900 students and faculty.

MEAT AND POULTRY INSPECTION:

Scientific Advancements

The meat and poultry inspection program is moving from organoleptic inspection to more and newly evolving scientific methods of assessing the effectiveness of food safety systems. This division is constantly implementing new scientific advancements in food safety. Each establishment that produces meat products now have interventions in place to eliminate or control the pathogens that are most likely to cause foodborne illness.

AG MARKETING: *Agribusiness Development*

KDA joined Governor Jeff Colyer and the Department of Commerce at the launch of Land in Kansas: a new economic development initiative aimed at attracting investment and promoting business expansion in Kansas. Land in Kansas takes a comprehensive, multi-agency approach to economic growth, including a new state marketing campaign and a top-down review of economic development programs in the state. The program also includes a Strategic Growth Initiative pilot project spearheaded by KDA which is designed to proactively identify how counties wish to grow and match them with companies with similar needs to locate in their area. KDA received interest packets from 13 counties/communities to kick off the Strategic Growth Initiative project and is working with those communities to match their areas of interest for economic growth with possible economic development opportunities.

AG MARKETING: *International Trade*

The international trade team within the division of ag marketing provided opportunities for Kansas businesses to expand their export sales by taking part in international trade missions: State Trade and Export Promotion (STEP) missions went to Petfood Forum Asian/Victam, Thailand, South Africa, Beef Australia, AGRO 2018, Ukraine, and Peru; United States Livestock Genetics Export (USLGE) missions went to AGroFarm Russia, Argentina, Uruguay and Costa Rica; USDA-led trade missions went to Japan and South Africa. First-time Kansas trade mission travelers totaled 22 farmers, ranchers and agribusinesses. Tangible success is being seen with the STEP program: Actual sales from all STEP missions totaled \$5.64 million.

DAIRY INSPECTION: *New Development*

June 2018 saw the installation of the 110-cow rotary, the largest milking system in North America. KDA's dairy and feed safety program worked with the farm to incorporate the equipment into their plans in their Grade A milking facility according to the Pasteurized Milk Ordinance.



DIVISION OF CONSERVATION:

Communication and Outreach

Providing avenues for outreach education is very important for the conservation community, and improving communication and assistance to our conservation districts is vital to helping them serve their landowner and producer customers. Part of DOC's 2018 outreach strategy was the creation of a "Conservation District Toolbox" which will be made available on the KDA website. As conservation district managers look for new ways to promote water and soil conservation, as well as improve their district operations, they can look to the toolbox for proven and useful techniques, methods and projects. New information and updates are constantly being added to the website to ensure that the most up-to-date information and opportunities are available. Another successful tool we use as part of our outreach education to conservation districts are "Did You Know?" email blasts to clarify administrative functions and responsibilities of the districts.

DIVISION OF CONSERVATION:

Special Conservation Cost-Share Initiatives

The Kansas Reservoir Protection Initiative was a unique 2018 collaborative effort between the Division of Conservation, several local conservation districts, the Kansas Water Office, and the Kansas Department of Health and Environment. Landowners were provided cost-share assistance for implementing sediment-reducing conservation practices above selected federal reservoirs, and payments were based on the amount of sediment reduced by the practice. Seeding of cover crops accounted for more than 90 percent of the applications, and 100 applications were approved for \$1,119,855. This initiative was very successful and will likely become a model for future similar partnership projects.

Another special DOC 2018 initiative provided help to farmers and ranchers with securing new livestock water supplies when their current supplies were lost due to the severe drought conditions. There were 174 applications for livestock water supplies in 38 drought-affected counties approved for a total of \$322,229 to implement important practices like sater wells, pipeline, watering facilities and pumping plants. Funds for both initiatives were efficiently distributed to landowners via local conservation districts utilizing the DOC's CSIMS program.

PESTICIDE AND FERTILIZER: *Section 18 Exemption*

The Pesticide and Fertilizer Program continues to meet the needs of growers by working with K-State entomologists and weed scientists when field conditions warrant a special registration of a pesticide product. The sugar cane aphid continues to be a problem for sorghum growers. A Section 18 Emergency Exemption was once again made available for the use on sorghum of Transform which has the active ingredient sulfoxaflor.

EMERGENCY MANAGEMENT:

Emergency Response Workshops
KDA emergency management conducted a series of agriculture emergency response workshops around the state during spring 2018. These workshops, attended by local producers, emergency management professionals, public health officials, and KDA volunteer corps members, were designed to increase awareness of both preparedness and response efforts that the agency engages in, and to provide training for nontraditional responders who would be called upon during a foreign animal disease incident.



EMERGENCY MANAGEMENT:

Multi-State Partnership
KDA emergency management hosted the 2018 annual meeting of the Multi-State Partnership for Security in Agriculture in February in Manhattan. The Multi-State Partnership is a group of 20 states that voluntarily share resources, lessons learned, and projects related to ensuring that the agriculture industry in each state is prepared to respond to a significant incident threatening both human and animal health or safety. The annual meeting was attended by state and federal officials who were able to share about ongoing projects, trade ideas about common challenges, and hear from experts in the field of emergency management and biosecurity.



Our mission includes **ADVOCATING** for and promoting the agriculture industry, the state's largest industry, employer and economic contributor.



WEIGHTS AND MEASURES: *Open House*

The Division of Weights and Measures is continually searching for opportunities to provide education. In addition to the several meetings, workshops, technical classes and specialized trainings offered every year, this year the division decided to celebrate National Weights and Measures Week by hosting a Weights and Measures Open House. Our goal was to educate consumers about the program, inspection responsibilities and the services we provide. The open house featured: fuel and scale testing equipment, demonstrations on package checking and fuel ethanol shake tests, consumer tips for price verification and credit card skimmers in gas pumps, and the history of Weights and Measures.

WATER MANAGEMENT SERVICES: *Interstate Issues*

Kansas, Nebraska and Colorado settled all past claims for damages from non-compliance with the Republican River Compact with Colorado paying \$2 million to Kansas to invest in the South Fork Republican River basin. Colorado has also committed to investing \$2 million in the basin on its side of the state line to improve streamflow into Kansas. Kansas and Colorado entered into a temporary agreement to store water in a recreation pool in John Martin Reservoir on the Arkansas River in Colorado. The states are now working on a permanent arrangement to provide certainty to both Kansas and Colorado water users.

WATER MANAGEMENT SERVICES: *Kansas Water Issues*

Quivira: The office of the chief engineer continues to push for resolution to the impairment of Quivira National Wildlife Refuge in southcentral Kansas. The program has created decision tools and provided extensive outreach in the basin to support a locally developed solution.

Wichita ASR: The hearing process has begun for changes to Wichita's aquifer storage and recovery (ASR) project where the city is proposing to focus the project on drought preparation instead of day-to-day water supply.

R9 Ranch: Public comments have been received and the chief engineer's order is being developed on the city of Hays' proposal to change the water rights from irrigation to industrial on the R9 Ranch in Edwards County to eventually use as part of its municipal water supply.

DIVISION OF CONSERVATION: *Land Reclamation Updates*

Each year the Mined Land Reclamation Program, which licenses aggregate producers in Kansas, announces a Governor's Mined Land Reclamation Award. State winners are then nominated for a national award. Kansas currently has five national winners, more than any other state in the non-coal division.

WATER STRUCTURES:

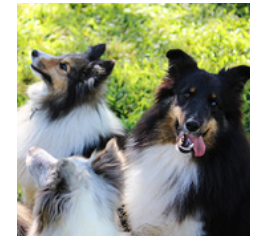
Floodplain Mapping Projects

Floodplain mapping projects are underway in several watersheds and counties throughout the state. Those projects are in various stages of completion and include the Lower Cottonwood, Lower Smoky Hill, Middle Kansas, Neosho Headwaters, Solomon, Upper Marais des Cygnes, Barton County, Brown County, Nemaha County and Rice County. The Wilson County floodplain map went into the appeal period and communities have until February 2019 to submit comments. Montgomery has reached Letter of Final Determination; communities have until June to adopt ordinances. The mapping project in Saline County was completed this past year resulting in new effective maps in April. KDA works with local communities to update FEMA Flood Insurance Rate Maps, giving property owners and stakeholders ample opportunities to learn about the map revision process and to understand their flood risk and how any changes to the flood risk map may affect them.

AG MARKETING:

Compliance Education & Agency Events

Compliance Education and Agency Support reached over 2,249 individuals through direct contact with KDA program and agency events, from the Ag Growth Summit to the 7-state Ogallala Water Summit to State Fair events. Highlights included the Dam Safety Conference held March 6 in Manhattan with 155 in attendance and the industrial hemp public forum in May in Manhattan with 175 in attendance.



ANIMAL HEALTH:

Secure Food Supply Plans

A joint effort was started in 2017 with Kansas milk, beef, and pork producers to develop Secure Food Supply Plans for those industries. Implementing enhanced biosecurity plans can prevent a disease from entering a premises and will lessen the amount of time needed for KDA to issue a permit to move animals or animal products in the event of a major disease outbreak in North America. Having plans in place now will allow management to react faster and implement heightened biosecurity measures.

ANIMAL HEALTH:

Trichomoniasis

Trichomoniasis (Trich) is a highly contagious venereal disease in cattle, carried by the bull and transmitted to the cow during breeding. Trich was added to the Kansas reportable disease list in 2010. Although the prevalence of Trich in Kansas has decreased as a result of increased testing and culling since 2010, a 2018 disease event in southeast Kansas found seven new cases with 33 positive bulls. As part of the disease response, 30 quarantines were issued to control the spread of the disease.

DIVISION OF CONSERVATION: *CREP Progress*

FY2018 was a very robust year for enrollment in the Upper Arkansas River CREP — the second highest since the initial program rollout. With only 6,150 acres left to fill the available project allowance of 28,950 acres, the project is more than 75 percent complete at the current level. Significant progress is being made on the project's 12 identified conservation objectives, and additional research is being undertaken in conjunction with this innovative program. The Upper Arkansas River CREP project continues to draw interest as a management tool from both within and outside of Kansas. The program has resulted in the enrollment of 22,800 acres into the Conservation Reserve Program and a permanent retirement of 46,919 acre-feet of annual water appropriations on 198 wells.

ANIMAL HEALTH: *AFI Regulations*

A legislative directive for statutory amendments to the Kansas Pet Animal Act required the creation of new supporting regulations. These regulations, after moving through the rulemaking process, included license fee increases on small animal facilities. Additional fees were also included by the legislature: Licensees are now subject to a \$200 "no-contact" fee and a \$200 "re-inspection" fee, and licensees who request an inspection must pay a \$200 "requested inspection" fee. In addition, the program is no longer allowed to give prior notification of routine inspections to those licensees with good history. Lastly, the legislature removed AFI's responsibility to license foster care homes.

DIVISION OF CONSERVATION:

New Riparian and Wetland Projects

Two new conservation opportunities were made available to landowners in 2018 through DOC's Riparian and Wetland Program. The Riparian Quality Enhancement Initiative allows qualified producers to receive financial assistance for installing alternative water and shelter for livestock while protecting riparian areas. This initiative is available in selected stream corridors where improved water quality is being targeted from high levels of E. coli and fecal coliform bacteria. The Kansas Sediment and Nutrient Reduction Initiative provides state financial incentives for enrollments in the USDA Conservation Reserve Program above Milford Reservoir. These enrollments are for practices like buffers and grassed waterways that reduce sediment and nutrients entering the stream to help with algae and other problems.

EMERGENCY MANAGEMENT: *Rampart Exercise*

KDA hosted its annual foreign animal disease functional exercise in December 2018. This is the sixth consecutive year KDA has hosted an exercise to test the state's response capability to a high-consequence foreign animal disease. This year's exercise, Rampart, was the largest yet, with leadership from USDA, the Department of Homeland Security, and the FBI coming to Manhattan to participate. Sixteen other states also participated in the exercise, with eight states sending staff to Manhattan. The annual KDA functional exercise combines the expertise of KDA officials with those from Kansas State University, a number of partnering state agencies, local jurisdictions across the state, agriculture industry groups, and local producers. This year's exercise saw over 300 individual participants take part in the event.



Our mission includes **HELPING** ensure a safe food supply, protecting natural resources, promoting public health and safety, protecting animal health and providing consumer protection to the best of our ability.

WATER APPROPRIATION: *Water Conservation Areas*

A water conservation area (WCA) allows an individual or group of water right holders to enter into an agreement with the chief engineer to conserve groundwater in exchange for being able to more flexibly manage their group of water rights. KDA-DWR has dedicated staff in Garden City and Stockton to help water users analyze their water use, evaluate desired flexibilities, and develop WCAs. In 2018, there were 11 more WCAs created or pending approval to manage over 11,000 acres. There are currently 21 WCAs managing 43,644 acres with estimated savings of 7,000 acre-feet per year.

MEAT AND POULTRY: *Statewide Inspections*

The meat and poultry inspection program works to ensure the safety and wholesomeness of meat and poultry processed by Kansas slaughter and processing plants that are not under federal inspection. This is done by providing inspection services to establishments that prepare meat and poultry food products for entry into intrastate commerce. This assurance is becoming more critical as more food products are intended to be consumed with little or no further preparation at home. In fiscal year 2019, there were 46 inspected facilities, 36 custom-exempt facilities and 311 other meat and poultry businesses registered in Kansas. Inspectors conduct inspections at inspected plants each day they apply the mark of inspection. This means that in FY 2018 a total of 78,259 inspection procedures were conducted by 31 inspection field staff (inspectors, compliance, supervisors, veterinarian).

EMERGENCY MANAGEMENT: *Monitoring ASF*

KDA emergency management continues to partner with KDA Division of Animal Health, USDA-APHIS, Kansas State University faculty, the Kansas Pork Association, and Kansas swine producers to address the growing concern related to the ongoing outbreak of African Swine Fever in China and parts of Europe. Several planning meetings were held locally and regionally in 2018 to refine the KDA foreign animal disease response plan to address the unique challenges related to African Swine Fever. KDA emergency management, in conjunction with USDA-APHIS, will host a number of exercises in the state during 2019.

WEIGHTS AND MEASURES: *Fuel Quality Inspection*

Ensuring consumers are purchasing quality motor fuels is a high priority of the weights and measures program. To improve fuel quality inspection, this last year the program has participated in several fuel quality training opportunities in addition to becoming a member of ASTM International and joining the Fuels and Lubricants Subcommittee at the National Conference on Weights and Measures. Cooperating with stakeholders and private industry, weights and measures developed a fuel sampling and octane testing project to collect and analyze data for ethanol flex fuels. Fuel sampling will begin in 2019.

FEED SAFETY:

Inspections and Sampling

- 1381 feed samples collected for analysis of nutritional label guarantees, contaminants, and adulterants
- 235 inspections of feed facilities reviewing good manufacturing practices, medicated feed usages, and facility cleanliness
- 40%+ online payment utilizing USAPlants database for online payment of licenses, product registration, and tonnage

DAIRY INSPECTION:

Inspections and Sampling

- 4320 samples of raw milk, pasteurized dairy products, and dairy waters
- 754 Grade A farm inspections, 106 dairy plant inspections and equipment testing

AGRICULTURE LAB:

Sampling

- Total Samples Received in 2018: 14,304
- Total Determinations Completed in 2018: 41,462

FOOD SAFETY AND LODGING:

Statewide Inspections

The food safety and lodging program protects public health and maintains public confidence in Kansas food establishments by providing uniform, effective and efficient food safety inspections. In 2017, the program performed 21,599 inspections of food and lodging establishments, food processors and storage facilities.

Kansas AG SUMMIT

GROW SMARTER. GROW STRONGER. GROW KANSAS.

Since late 2015, KDA has helped lead the Kansas agriculture industry in development of a statewide agricultural growth strategy for 19 sectors of agriculture in the state. In addition to hundreds of small group meetings, three statewide Ag Growth Summits have been held to provide opportunities for leaders in agriculture sectors to identify desired growth outcomes for those sectors, and then to outline specific action items to achieve those outcomes. Documents have been developed to share and track those outcomes and action items, and they serve as working documents to guide efforts that are being made to achieve those outcomes.

The Ag Growth Strategy initiative is a vital partnership between public and private leaders within the Kansas ag industry. The desired growth outcomes identified by the ag sectors guide the work of the Kansas Department of Agriculture, as we work toward our vision that Kansas will provide an ideal environment for long-term, sustainable agricultural prosperity and statewide economic growth.

At the 2018 Ag Growth Summit, the following list of growth achievements within the 19 sectors of Kansas agriculture were shared with summit attendees.

- Jumpstart funding was awarded to nine Kansas-based agribusinesses to support new and expanding enterprises.
- Truck weights on state highways have been increased, allowing the transport of up to 90,000 pounds on six axles, to maximize efficient movement of agricultural products and reduce environmental impact.
- Kansas announced Cattle Trace, a collaborative partnership to conduct a pilot project aimed at developing and testing a purpose-built infrastructure capable of tracing cattle movement through the supply chain for disease traceability purposes.
- A biofuels infrastructure grant to Kansas for \$1.3 million is being used to improve consumer access to E15 by partnering with gas stations across the state to install pumps that can supply E15.
- Southwest Kansas is home to the largest single-dryer dairy processing plant in North America, which recently received the Sustainable Plant of the Year award.
- A national alfalfa checkoff program now provides funding for alfalfa research.
- The Kansas ExpoCentre has announced that approved expansion plans for Domer arena will provide greater opportunities for larger equine programming.
- Kansas is a national leader in the development of Secure Food Supply plans at cattle feeding and dairy operations. As of July 1, 16 Kansas dairies and 25 feed yards have completed or are in the process of developing site-specific biosecurity plans.
- The Kansas Wheat Innovation Center expanded in March 2018 to increase its capability to house critical wheat research dedicated to cutting edge wheat genetic improvement for Kansas wheat farmers.
- A Kansas sorghum processor has established a market for baijiu alcohol in China, expanding the operation's export opportunities.
- Numerous pet food trade missions over the past year have opened discussions with potential export market opportunities: Petfood Forum Asia in March 2018, China in August 2017, Cochran Fellowship in-country from Serbia in March 2018.
- The Kansas Grain Sorghum Commission, in partnership with U.S. Grains Council and KDA, increased the number of trade missions — developing and further strengthening global relationships for the state's sorghum farmers and agribusinesses.
- The Kansas Legislature passed the Alternative Crop Research Act, allowing the cultivation of industrial hemp in a research program, and the rules and regulations are underway with a goal that planting can begin in 2019.
- A survey was conducted to investigate the economic impact of specialty crop growers in Kansas and their effect on the local food systems, to provide knowledge of the scope and needs of producers.



- The Kansas governor signed a bill passed by the state legislature in 2018 which set into statute guidelines related to animal conversion units, poultry facilities, and confined feeding facilities.
- From the Land of Kansas has reorganized with a new benefits structure and more marketing opportunities which can help food processors.
- Colleges and universities in the state are actively engaged in promoting UAS/precision agriculture as a career option to secondary students, and are partnering with tech companies to enhance their ag tech programs.
- Cotton yields were up 177 percent in Kansas in 2017, with a record production of 185,000 bales, primarily due to increased use of 2,4-D tolerant varieties.
- The Kansas Pork Association has reached over 4 million consumers with targeted messaging showing how hogs are grown and raised, and with positive messages about the pork industry.
- The Kansas State Fair will receive additional revenue for capital projects at the fairgrounds to allow the fair to expand and continue providing Kansas with a first-class fair and facilities.
- K-State College of Agriculture promotes pet food academic specialties, and last year 25 students enrolled in the pet food minor and 27 students enrolled in the pet food option of the feed science and management major.
- K-State Research & Extension food safety staff is reaching out to food councils to share information about FSMA and produce safety workshops available to farmers in their areas.
- K-State hired an extension sheep and meat goat specialist to provide support to statewide extension programs as well as teaching and applied research on campus.
- The Collaborative Sorghum Investment Program has led the development of a multi-discipline KSU Sorghum Crop Improvement Mission, Vision and SMART goal strategic plan.
- Progress is underway in the wheat industry to identify potential veteran farmers, and farmers looking for the next owner/operator, offering succession possibilities.
- Ag equipment businesses have developed a strategy to reach out to secondary schools to recruit students while in high school.
- A collaborative Alfalfa Variety Evaluation project will provide current information regarding alfalfa varieties; the project is led by K-State Research and Extension & Cowley County Extension, with support from the Kansas Forage and Grassland Council & private alfalfa seed companies.
- The Kansas Agriculture Emergency Response Corps was launched in 2017 to recruit and train Kansas citizens who have skills that will be important in an agricultural emergency response. Nearly 60 members have applied and received training as of July 1.
- In 2017, exports of beef and beef products from Kansas totaled \$1.25 billion, the largest export value in the past five years, and beef and beef product exports from Kansas have accounted for between 18 and 26 percent of total U.S. beef exports for each of the last five years.
- KDHE has worked to strengthen the livestock waste management section staff, and have improved efficiency of the permitting process by implementing new internal policies that involve the engineering workflow.
- In collaboration with other states and national organizations, online FSMA pet food training modules have been planned for fall 2018, bringing increased training opportunities to Kansas.
- The Kansas Corn Commission is helping educate youth about GMOs by providing appropriate labs related to GMOs and biotechnology for 6th-12th grade teachers, as well as training and funding specifically created to meet state science standards.
- The Bipartisan Budget Act in 2018 amended the 2014 Farm Bill, adding seed cotton as a covered commodity under the ARC and PLC programs.
- The Kansas Department of Health and Environment is assembling a group of public and private poultry industry representatives to write and propose rules and regulations for SB 405.
- Cargill announced plans to build a state-of-the-art biodiesel plant in Wichita, a \$90 million investment that will produce 60 million gallons of biodiesel annually when it opens in January 2019.
- Kansas was selected as one of 10 partners in the UAS Integration Pilot Program, with a proposal that seeks to leverage a statewide unmanned traffic management system to facilitate precision agriculture operations.
- The Collaborative Sorghum Investment Program research on water optimized sorghum for Kansas will utilize \$150,000 in state-appropriated funds to research water use in multiple research locations.
- A K-State Research and Extension poultry specialist has been working with many communities across the state to better understand all aspects of the poultry industry — e.g., layers, broilers, turkeys.

agriculture.ks.gov/GrowAg

2019 Kansas Governor's Summit on Agricultural Growth
Thursday, August 29, 2019

Ag Growth



900 SW Jackson
Topeka, Kansas 66612
(785) 296-3556

1320 Research Park Drive
Manhattan, Kansas 66502
(785) 564-6700

www.agriculture.ks.gov