



1320 Research Park Drive
Manhattan, Kansas 66502

MINUTES OF THE STATE CONSERVATION COMMISSION

1. The State Conservation Commission meeting was called to order by Rod Vorhees, Chairman and Area V Commissioner, at 9:00 a.m., Wednesday, January 20, 2016, at the Kansas Department of Agriculture, 1320 Research Park Drive, Manhattan, Kansas.

2. ATTENDANCE:

Elected Commissioners:

Ted Nighswonger, Area I Commissioner
Andy Larson, Area II Commissioner
Brad Shogren, Area III Commissioner
John Wunder, Area IV Commissioner
Rod Vorhees, Area V Commissioner

Ex-Officio & Appointed Members:

Gaye Benfer, Assistant State Conservationist for Management and Strategy, USDA,
Natural Resources Conservation Service (NRCS)
Peter Tomlinson, Ph.D., Associate Professor, Extension Specialist for Environmental
Quality Agronomy Department, Kansas State University (KSU)
Terry Medley, P.E., Water Structures Program Manager, Division of Water Resources,
Kansas Department of Agriculture

Division of Conservation, Kansas Department of Agriculture Staff:

Susan Metzger, Interim Executive Director
Scott Carlson, Assistant Director
Don Jones, Water Quality Program Manager
Steve Frost, Water Conservation Programs Manager
Megan Green, Conservation District Program Coordinator
Katie Burke, Conservation District Program Coordinator
Cindy Woofter, Administrative Specialist
Andy Klein, Water Quality Forester, Kansas Forest Service

SCC MEETING MINUTES

January 20, 2016

Page 2

Guests:

Larry Biles, State Forester, Kansas Forest Service

Jim Krueger, Executive Director, Kansas Association of Conservation Districts, (KACD)
(present 9:59 a.m. to 2:40 p.m.)

Stephanie Royer, President, KACD-EO/District Manager, Rush County Conservation
District (present 9:00 a.m. to 2:40 p.m.)

Robert Large, Chief Legal Counsel, KDA (present 1:13 p.m. to 1:30 p.m.)

3. CERTIFICATION OF ELECTION:

A motion was made by John Wunder to certify the election to the Conservation Commission for a two-year term beginning January 1, 2016: Area I – Ted Nighswonger, Area III – Brad Shogren, and Area V – Rod Vorhees. The motion was seconded by Andy Larson. Motion carried.

4. ELECTION OF CHAIRPERSON AND VICE-CHAIRPERSON OF THE COMMISSION:

A motion was made by Ted Nighswonger to nominate Rod Vorhees to serve as Chairperson. The motion was seconded by John Wunder. Motion carried.

A motion was made by Brad Shogren to nominate John Wunder to serve as Vice-Chairperson. The motion was seconded by Ted Nighswonger. Motion carried.

5. ADDITIONS/CORRECTIONS TO AND APPROVAL OF AGENDA:

- a. No additions or corrections were made to the agenda.

6. MINUTES OF THE PREVIOUS MEETING:

Dates for the Spring Workshops were incorrectly listed on the draft November 22, 2015, minutes. Listed below are the corrected dates and locations:

Area I – March 8, American Legion Hall, Grainfield

Area II – March 9, KSU Experiment Station, Garden City

Area III - March 10, NRCS Conference Center, Salina

Area IV - March 1, Pottorf Hall, CiCo Park, Manhattan

Area V- March 2, Old Iron Club, Fredonia

A motion was made by Andy Larson to approve the November 22, 2015, minutes as amended. The motion was seconded by Ted Nighswonger. Motion carried.

SCC MEETING MINUTES

January 20, 2016

Page 3

7. RECESS INTO EXECUTIVE SESSION TO DISCUSS EXECUTIVE DIRECTOR:

A motion was made by Ted Nighswonger to recess into Executive Session to discuss the Executive Director applicants. Time to recess was 2:48 p.m. Time to reconvene was 3:05 p.m. The motion was seconded by Andy Larson. Motion carried. At 2:48 p.m. the Commissioners, Susan Metzger, Terry Medley, Peter Tomlinson, and Gaye Benfer went into Executive Session. Time reconvened was 3:06 p.m.

A motion was made by Ted Nighswonger to appointment Robert Reschke to the position of Executive Director of the Division of Conservation at the salary and terms negotiated between the Secretary and candidate. The motion was seconded by John Wunder. Motion carried.

8. COMMENTS FROM GUESTS:

- a. Larry Biles, KFS – KFS was awarded a large grant, and is pleased to be receiving great support in solving water quality issues. With more personnel there are more opportunities to work more personally with producers. KFS is pleased to have Andy Klein as a new employee working with KFS and DOC.
- b. Stephanie Royer, KACD-EO President - There will be a KACD-EO officer representative meeting on April 21, 2016, at the NRCS conference center in Salina. Let her know if you have anything to report. The EO representatives will also be attending the spring workshops. The resolution presented in regards to the NACD printing was denied. She is writing a letter of support for the state of Kansas.

9. FINANCIAL REPORT:

- a. Overview of the FY 2016 second quarter financial report – Frost (See Attachment A)
 - i. The staff is trying to devise a meaningful and informal financial report for the SCC that is not just a bunch of numbers. The handout provided at this meeting was primarily made up of cost-share amounts and was provided to the SCC for their review and opinion.
Most water resources funds have been allocated per Cathy. Steve reviewed and discussed each line item and encouraged all to ask if there were any questions.

The FY 2016 second quarter financial report was reviewed by the SCC Board.

SCC MEETING MINUTES

January 20, 2016

Page 4

10. COMMUNICATIONS AND ANNOUNCEMENTS:

- a. Butler County – Jeff Parks, District Technician, start date 12-1-15
- b. Labette County District Manager – is vacant as of December 30, 2015, and is being advertised. Laura Cruz, most recent District Manager, is still going in on weekends and evenings to help prepare for the Annual Meeting.
- c. Sheridan County District Manager – is vacant as of December 30, 2015, and is being advertised.

11. UNFINISHED BUSINESS:

- a. Kansas Forest Service Water Quality Forester position update – Carlson/Burke.
 - i. Andy Klein began his first day in the office today; the cost is approximately \$2,400 for use of the cubicle he is stationed at. He has his own truck and computer, and will have use of KDA phone system and copier. Katie is working on the Memorandum of Agreement between KDA and KFS.
Katie gave a brief presentation explaining the details of Andy's position and the need for it. She discussed the established riparian buffers on new streambanks, as well as the many benefits of buffers. Andy will be a key player in this endeavor and will be helping alleviate the DOC workload on this project.
A large portion of Andy's time will be spent focusing on streambank buffers. He will be working in the field 70-80% of the time, with the remainder being here in the office.
- b. Review Conservation Reserve Enhancement Program (CREP) Annual Report – Frost (See Attachment B).
 - i. Steve passed out CREP maps to review; the CREP program has been active for 8 years. Steve described CREP as a glorified conservation project with enhancements. During this meeting, Susan was attending a legislative hearing presenting the same CREP material.
An Annual Report was completed and submitted to FSA.
- c. Review updated SCC Spring Workshop locations – Woofter (See Attachment C).
 - i. Cindy provided the Board with an updated/corrected schedule of SCC Spring Workshops. Noon meals were discussed and it was decided that in Area I the same caterer will be used as last year. In Area II and III the lunch hour will be open for attendees to leave and eat where they choose. In Area IV, Ricky's Café will cater the lunch. In Area V a local caterer will be used. Cindy will make all arrangements for caterers.
- d. Approve Commissioner and staff out-of-state travel – Frost.
 - i. No new travel to approve.

SCC MEETING MINUTES

January 20, 2016

Page 5

- e. Conservation Easement Program development update – Metzger.
 - i. Susan said that lots of progress has been made on this project. She met with SAKW, and also went to Kansas City with Hakim to meetings in regards to the project. Once approved, this will be one of four in the state.

Break – 10:13 a.m. to 10:28 a.m.

12. NEW BUSINESS:

- a. Review survey of conservation partnership regarding partnership meeting structure – Carlson (Attachment D).
 - i. Scott presented the survey at the KACD meeting. After the draft is reviewed and approved by the SCC Board, it can be presented at the Spring Workshops. After more reviews, it can be revised and presented at the joint KACD/SCC meeting in July. After each review, changes can be made and then presented at the Fall KACD meeting and the KACD Annual Convention.
 - ii. Suggestions made by the Board to add/change on the survey are as follows:
 - i. Have you attended in the past regularly/seldom?
 - ii. Location of meeting – too far from home?
 - iii. Start meetings an hour later for Mountain Time attendees
 - iv. Possibility of notifications of spring/fall/annual meetings coming from SCC commissioners and/or KACD board members may be more influential.
 - v. Ask preference of time of year to hold meetings
 - vi. Supervisors want to feel like they are considered and important, their opinion is worth something, their time is valuable
 - vii. Have spring workshop from 10-2 with lunch provided – more accommodating to farmers/ranchers?
 - viii. What time frame would allow people to attend the meetings?
 - ix. Are you employed off the farm as well?
 - x. Assure Supervisors they will not get excess e-mails when they provide their e-mail address to the DOC

A motion was made by Ted Nighswonger to approve the draft survey as presented/amended. The motion was seconded by Andy Larson. Motion carried.

- b. Review and discuss FY 2017 proposed cost-share program policy revisions – Jones (See Attachment E).
 - i. Don passed out a handout on the proposed cost-share revisions. The possibility of landowners receiving points for attending conservation-related workshops could possibly increase the attendance of these kinds of workshops/tours/meetings. These could be open to just about any topic dealing with enhancing skills on cropland.

SCC MEETING MINUTES

January 20, 2016

Page 6

In regards to the irrigation water management proposal, there are different provisions than ones provided through EQIP. They don't want to be too hard/stringent on the requirements, but a target to meet has to be set.

- c. Discuss Conservation District Annual Meeting schedule – Carlson/Woofter (See Attachment F)
 - i. Cindy presented the list of the upcoming Annual Meetings and that 20 year awards will be presented at several of them. The DOC would prefer to have a representative of either the SCC, DOC, KACD, or NRCS available to present the awards.
- d. Spring workshops agenda review – Carlson (see Attachment G).
 - i. Gaye mentioned that NRCS is not allowed to attend business/financial parts of DOC meetings. If they are to attend, then the agenda will need to be altered as to not reflect financial discussions. She will run the tentative agenda by Eric Banks and get his opinion. All District Conservationists are required to attend partnership meetings unless they have previously been excused from attending. Gaye will let Scott know what the NRCS needs of the DOC to meet requirements of their attendance at the meeting.
 - ii. Peter suggested the workshop agenda could be more descriptive.
 - iii. Rod said that parts of the program should be presented by partners and Commissioners and that breakouts are important.
 - iv. John stressed that the workshop topics need to be relevant – topics need to relate to the attendees so they want to attend.
 - v. Stephanie – District Conservationists and District Managers need to SELL workshop attendance to their Board and that their enthusiasm trickles on to others.
- e. Review SCC policy to review and approve DOC financial reports.

A motion was made by Ted Nighswonger to receive instead of approve financial reports of the DOC. The motion was seconded by Brad Shogren. Motion carried.

Break for lunch 11:50 a.m. to 12:33 p.m.

- f. Discuss conservation partnership leader's video – Vorhees.
 - i. Scott discussed the leader's video production that the SCC and KACD want to pursue.
 - ii. Rod will talk with Bill Simshauser, KACD, about getting together to brainstorm in regards to making a video as a joint effort and perhaps be ready for the joint meetings in August.
- g. Discuss Greenwood County cost-share payments – Green
 - i. Megan explained that she did a routine cost-share review at Greenwood County. The Greenwood County Board is cooperating in correcting deficiencies from a previous employee. Rod also attended the most recent meeting. He said that the Board

SCC MEETING MINUTES

January 20, 2016

Page 7

expressed they would like more oversight, input, direction. Developing a checklist for cost-share procedures was discussed and will be accomplished with the Board's input.

- h. Review Post Rock Rural Water District Supply Restoration Program Letter of Interest – Metzger.
 - i. Susan briefed on the letter – the addressed concerns have been problems for a number of years. The Post Rock Rural Water District will supply approximately \$400,000 for the project, which would leave KDA providing about \$200,000.

A motion was made by Ted Nighswonger to approve consideration of funding for cost-share requested by Ellsworth County Rural Water District No. 1 to upgrade the raw water supply intake, as stipulated in the Letter of interest dated December 21, 2015. The motion was seconded by John Wunder. Motion carried.

13. REPORTS:

- a. Agency Reports:
 - i. NRCS – Gaye Benfer – Attempts are being made to fill vacant positions within NRCS due to many retiring. The National budget has been signed and it looks like there will be a little bit more CSP and EQIP funds available (See Attachment H).
 - ii. K-State Agronomy – Peter Tomlinson – Things have been fairly quiet; has been doing planning for a new building.
 - iii. KDA – Terry Medley – Terry reported that he is still working on streambank stabilization projects, there are now two dam safety engineers on board in Topeka, and the Neosho WRAPS meeting will be held February 2-3 via webinar.
 - iv. Larry Biles – Kansas Forest Service – Larry gave a quick update on the new hire, Andy Klein, and welcomed him to the Board.
 - v. KACD – Jim Krueger – Jim announced that the Leopold Award will once again be offered, an announcement will be made in the very near future, and the sponsors are good for three years. He has several ideas for workshops that he has been working on; just needs more input from committees and the Board. The joint meeting will be held in the Lakin/Garden City area the second weekend in August. The 2016 Annual Convention will begin with the General Session, Color Guard, Roll Call, Speaker, then committee meetings and breakout sessions. State Envirothon will be held at Camp Wood as part of their 25th Celebration on April 27.

SCC MEETING MINUTES

January 20, 2016

Page 8

b. Staff Reports:

- i. Megan Green, DOC – Megan has the computer software installed now to start working on training videos, and mentioned that the possibilities are limitless. She showed a video of how to work through CSIMS doing a contract amendment to show the Board how the training video process will work. She mentioned possibly working with the KACD-EO on QuickBooks and Supervisor Training, as well as compiling Supervisor Training modules for new Supervisors.
- ii. Steve Frost – DOC – Steve mentioned that the Conservation District reviews are exactly that – reviews, not audits, and that they are meant to be informational/teaching.
- iii. Katie Burke – DOC – Katie reported that she is still helping Megan with Conservation District reviews, and that she and Megan will possibly be heading to Hays to meet with Dan Meyerhoff, NRCS, to tour different conservation practices in his area.
- iv. Cindy Woofert - DOC – Cindy mentioned she had been working closely with Cathy on compiling the list of documents that had not been submitted yet from the Conservation Districts. She is also still staying busy getting Land Reclamation licenses out as dues are paid, along with all the other miscellaneous duties she has to do. Cindy will attend the Pottawatomie and Riley County Annual Meetings, and has been working on planning/scheduling the spring workshops.
- v. Cathy Thompson – DOC – A list was compiled of all documents that Conservation Districts still had not provided yet to DOC. These Districts' Supervisors will receive a letter listing each document not received yet from their District Manager (See Attachment I).
- vi. Don Jones – DOC – Don will be going to Parsons with Steve. He will also be attending the NRCS meeting in Salina in February.
- vii. Scott Carlson – DOC – Scott gave an update on Agriland. DOC pays a \$250 membership fee. More recognition and identity to the sponsors of Agriland will be placed on a sign. In regards to Ag Lime, there will be a hearing in February in which he will provide testimony on the rules and regulations. He also suggested possibly combining the April and May SCC meetings into one in April. Another option Scott mentioned was possibly having a teleconference in May to approve the budget and finish up miscellaneous business if needed. State Envirothon will be held at Camp Wood as part of their 25th Celebration on April 27, which could be another option of a location to have the April meeting.
- viii. Susan Metzger – DOC – Natural Resource Committee hearing went well. KDA provided their own testimony and several people stood up in favor of the CREP program.

SCC MEETING MINUTES

January 20, 2016

Page 9

c. Commissioner reports:

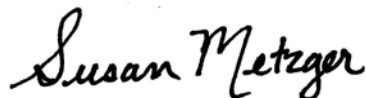
- i. Area I – Ted Nighswonger – Ted mentioned a neighbor in the area that was severely burned.
- ii. Area II – Andy Larson – Andy had nothing to report.
- iii. Area III – Brad Shogren – Brad reported that he attended two WRAPS meetings. He has talked with Ann D’Alfano about his concerns on the streambanks in the targeted priority areas. He also has met with Terry Medley and Katie Burke to discuss the projects. McPherson County’s District Manager, Brenda Peters, will be retiring March 1 after 24 years of service.
- iv. Area IV – John Wunder – John mentioned that not much is going on in his area. A lot of dirt work was done in the fall, but things have slowed down significantly.
- v. Area V – Rod Vorhees – Rod reported that the ponds are full and it is muddy. He was really concerned about stock water for the winter but Mother Nature came through and provided.

BREAK AT 2:40

14. ADJOURNMENT:

The next scheduled SCC meeting tentative date will be March 14 or 21, depending on the KDA Secretary’s availability. There is a possibility of having this meeting in a workshop-type format. If so, there will be a regular meeting then recess into a workshop. A discussion of the future roles and responsibilities of the SCC and DOC will occur. The Commissioners will decide at the March meeting if there will be a need to have both an April and May meeting.

A motion was made by Ted Nighswonger to adjourn the meeting. The motion was seconded by Brad Shogren. Motion carried. The meeting was adjourned at 3:20 p.m.



Susan Metzger
Interim Executive Director

FY 2016 Non-Point Source Pollution Control Program

1/7/2016

FY 2016 APPROPRIATION \$1,858,350.00
 FY 2015 CARRYOVER \$313,654.13
TOTAL APPROPRIATION \$2,172,004.13

DESCRIPTION	ALLOCATION	COMMITTED	EXPENDITURES	UNCOMMITTED
NPS Admn	\$1,500.00	\$0.00	\$28.00	\$1,472.00
A.S.K. Task Order	\$25,000.00	\$0.00	\$0.00	\$25,000.00
Oracle Data base Processor	\$0.00	\$0.00	\$0.00	\$0.00
Conservation Technician Positions	\$175,000.00	\$0.00	\$0.00	\$175,000.00
No-Till Education Funds/Workshops	\$67,500.00	\$0.00	\$12,187.11	\$55,368.99
Engineering Services - TWI	\$0.00	\$0.00	\$0.00	\$0.00
TOTAL ADMN	\$269,000.00	\$0.00	\$12,215.11	\$256,840.99
NPS CSIMS	\$1,439,350.00	\$765,338.80	\$506,864.16	\$167,147.04
110 Mile Creek	\$20,000.00	\$4,270.00	\$4,270.00	\$11,460.00
Coal Creek	\$12,212.80	\$0.00	\$0.00	\$12,212.80
La bette Creek	\$20,000.00	\$0.00	\$0.00	\$20,000.00
Peat Creek	\$20,000.00	\$19,957.60	\$0.00	\$42.40
Twin Lakes	\$27,787.20	\$5,292.00	\$22,495.20	\$0.00
NPS AFO CSIMS	\$50,000.00	\$2,625.00	\$14,000.00	\$33,375.00
NPS Carryover Funds	\$0.00	\$0.00	\$0.00	\$0.00
TOTAL NPS CS/MS	\$1,589,350.00	\$797,483.40	\$547,629.36	\$244,237.24
Unallocated Funds	\$708.00	\$0.00	\$0.00	\$708.00
Paybacks	\$5,971.59	\$0.00	\$0.00	\$5,971.59
TOTAL	\$1,851,670.4	\$797,483.40	\$559,844.47	\$494,398.64

\$173,118.63
 \$313,654.13

\$486,772.76

Prior FY PO's	PO No	Encumbered	Expenditures	PO Balance	Cancelled
FY 2015 NPS CSIMS	19337	\$452,328.64	\$142,954.49	\$309,374.15	\$0.00
FY 2014 NPS CSIMS	15032	\$211,652.22	\$71,149.01	\$140,503.21	\$0.00
FY 2013 NPS CSIMS	10906	\$133,883.88	\$7,450.00	\$126,433.88	\$0.00
FY 2012 KSU-Forestry	6022	\$6,026.97	\$0.00	\$6,026.97	\$0.00
Engineering Services	Various	\$256,345.44	\$35,654.23	\$220,691.21	\$0.00

FY 2016 Water Resource Cost-Share Program

1/8/2016

FY 2016 APPROPRIATION

\$1,948,289.00

FY 2015 CARRYOVER

\$156,939.17

TOTAL APPROPRIATION

\$2,105,228.17

DESCRIPTION	ALLOCATION	COMMITTED	EXPENDITURES	UNCOMMITTED
WR Admin*	\$126,313.69	\$0.00	\$77,871.50	\$48,442.19
A.S.K. Task Order	\$25,000.00	\$0.00	\$0.00	\$25,000.00
KSU Extension Contract	\$8,419.00	\$0.00	\$0.00	\$8,419.00
TOTAL ADMIN	\$159,732.69	\$0.00	\$77,871.50	\$81,861.19
WR CSIMS	\$1,754,902.78	\$1,267,070.90	\$375,597.53	\$112,234.35
110 MILE CREEK	\$41,500.00	\$37,000.00	\$3,300.00	\$1,200.00
COAL CREEK	\$36,362.21	\$5,000.00	\$3,992.40	\$27,369.81
LABETTE	\$41,417.50	\$0.00	\$0.00	\$41,417.50
PEAT CREEK	\$40,000.00	\$15,953.20	\$1,992.00	\$22,054.80
TWIN LAKES	\$40,000.00	\$13,132.58	\$16,399.25	\$10,468.17
TOTAL WRCS/MS	\$1,954,182.49	\$1,338,156.68	\$401,281.18	\$214,744.63
PAYBACK	\$8,687.01	\$0.00	\$8,687.01	\$0.00
TOTAL	\$2,105,228.17	\$1,338,156.68	\$470,465.67	\$296,605.82

*6% of initial appropriation for administrative expenses.

Prior FY PO's	PO No	Encumbered	Expenditures	PO Balance	Cancelled
FY 2015 WRCSIMS	19336	\$581,027.56	\$285,964.34	\$295,063.22	\$0.00
FY 2014 WRCSIMS	15024	\$160,561.97	\$7,831.61	\$152,730.36	\$0.00
FY 2014 KSU Water Probe	14690	\$4,000.00	\$4,000.00	\$0.00	\$0.00
FY 2012 Webelan	6105	\$6,000.00	\$0.00	\$6,000.00	\$0.00

PO 14690



ANNUAL UPDATE OF THE CONSERVATION RESERVE ENHANCEMENT PROGRAM (CREP)

Conservation of natural resources is an important concern for all Kansans.

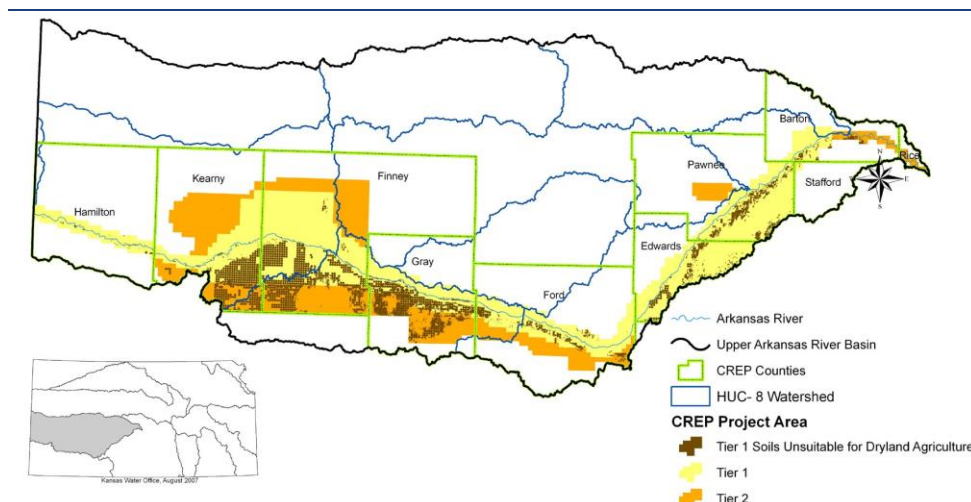
The Division of Conservation, working with local conservation districts, watershed districts, and other special purpose districts, and state and federal entities administer programs to improve water quality, reduce soil erosion, conserve water, reduce flood potential and provide local water supply.

- The Conservation Reserve Enhancement Program (CREP) is a federal / state partnership conservation program with the Farm Service Agency (FSA) of the United States Department of Agriculture (USDA) that targets high-priority conservation concerns identified by local, state, or tribal governments or non-governmental organizations.
- Farmers, ranchers, and other agricultural landowners who voluntarily remove environmentally sensitive land from production and introduce special conservation practices are paid an annual rental rate.
- In Kansas, the state's first CREP was created for enhancing water conservation efforts along the Upper Arkansas River (UAR) corridor from Hamilton County to Rice County. The UAR CREP has been approved and operating since 2007 and seeks to enroll 28,950 acres into the project. The state's main objective is to promote water conservation through the voluntary retirement of water rights.
- To be enrolled, water rights must be in good standing with the Division of Water Resources and have an active history of recent water use. This ensures that only "wet" water rights are approved.
- Currently, no more than 25 percent of the project's total allowable acreage may be enrolled in any one county. Gray County met the individual county enrollment cap of 7,237 acres in 2015 and Kearny County is now very near the same cap at 6,846 acres.
- As of September 30, 2015, a total of 99 state CREP contracts on 17,176 acres have been approved by the State of Kansas with the addition of 1,411 acres this year. These contracts have resulted in the permanent retirement of 34,527 acre-feet of annual water appropriation on 118 water rights from 152 wells.
- These contracts represent a total of \$1,037,771 in state sign-up payments to producers over the past seven years. The payments are matched by total annual producer rental payments from FSA totaling about \$2,100,000 per year over the 14 – 15 year life of the CREP contracts.
- The State of Kansas has again met its financial commitment to provide at least 20 percent of the federal costs of the program through a combination of direct payments, technical assistance and in-kind contributions with at least 10 percent coming from direct cash match. Since December 6, 2007, a total of \$8,710,285 from state, local and private expenditures has been made in support of the project to match an estimated total of \$30,938,473 in federal program costs.
- In FY2016, CREP received an appropriation of \$446,040 which is shared with the Water Right Transition Assistance Program (WTAP). The funding comes from the State Water Plan Fund.
- Significant financial and policy revisions were approved by FSA and the State of Kansas during the program year. State incentive payments to enrollees have been raised to reflect increased rental rates approved by FSA in 2014. The water use eligibility criterion has been amended to ensure that enrolled water rights will provide improved water conservation benefits. The State of Kansas can now more easily adjust individual county enrollment caps in direct coordination with the FSA State Committee. Throughout 2015, preparations have been underway to provide a refreshed program rollout to solicit enhanced interest and enrollment activity in 2016.
- More information is available in the KDA's full 2015 annual report to FSA at <http://agriculture.ks.gov/divisions-programs/division-of-conservation>.



PROGRESS ON CREP OBJECTIVES

- Enroll a maximum of 28,950 acres into CREP in the project priority area (25,950 irrigated acres, 3,000 from dryland pivot corners as part of whole field enrollment), with a goal of up to 18,600 acres put into native grass.
As of September 30, 2015, a total of 17,176 acres have been offered, accepted and enrolled into the CREP program. Of the total number of acres currently offered, only 1.8 percent (357 acres) was farmed dryland. Offers which are predominately "Tier 2 soils" comprise 11.0 percent (1,679 acres) of the total approvals to date. This objective is 59 percent complete.
- Reduce the application of groundwater for irrigation in the targeted area by 45,125 acre-feet, annually, with the enrollment of 25,950 irrigated acres.
As of September 30, 2015, a total of 34,527 acre-feet of authorized water rights for irrigation have been permanently retired. This rate is averaging just over 2 acre feet per acre, a rate higher than estimated in the CREP objective, particularly because the majority of the enrollment in the project area has been in the western counties where the water appropriation allowances are the highest in the state, and some irrigated acreage is authorized on land which is not being enrolled at the irrigated rate due to FSA restrictions. This objective is 76 percent complete.
- Reduce the outward migration of river salinity within the High Plains aquifer by 2020 from the currently projected extent based on 1990's groundwater conditions in the Arkansas River valley.
As of September 30, 2015, 17,176 acres have been offered, approved and enrolled into the CREP program. Some of the offered acres are close to the stream, and most are south of the river. An assessment of this objective will be made in the future, once more acres are enrolled, and when most of the wells are permanently turned off.
- Reduce agricultural use of highly erodible soils with a goal of enrolling 7,000 acres that are unsuitable for dryland farming.
As of September 30, 2015, approximately 14,188 acres of soils unsuitable for dryland farming have been enrolled in the CREP program. More than 100 percent of this objective has been met.
- Reduce the amount of soil lost to erosion by approximately 80,000 tons per year on all acres enrolled in CREP.
With 17,176 acres enrolled in the CREP program as of September 30, 2015, the amount of soil lost to erosion will be reduced by about 68,704 tons per year. Approximately 85 percent of this objective has been met.
- Reduce energy consumption from an average of 59,850 kW-hr to less than 5,000 kW-hr per pivot for the first two years on pivots enrolled in the CREP. In subsequent years, energy consumption will be reduced to zero, as the pivots eligible for limited irrigation will be removed from the enrolled parcel. Total energy savings for the term of the CREP contracts will approach 8 million kW-hr.
K-State Research and Extension staff provided a rough estimate of energy consumption for a 125 acre center pivot in counties along the Upper Arkansas River. An average energy consumption of 59,850 kW-hr per pivot per year was derived from their estimates. In the first two years of the program, offers made for acres that occur in soils unsuitable for dryland agriculture will have the opportunity to irrigate minimally to ensure establishment of grass cover. Therefore, a small amount of energy consumption will still be experienced in the first years of the program.
With 17,115 irrigated acres enrolled in CREP as of September 30, 2015, more than 7 million kW-hr of energy savings may be achieved each year. 98 percent of this objective has been met.



For additional information, please contact:

Steve Frost, CREP Coordinator

Kansas Department of Agriculture, Division of Conservation
1320 Research Park Drive, Manhattan, KS 66502 • (785) 564-6622

Water and Soil Conservation in the Upper Arkansas River Corridor

The Conservation Reserve Enhancement Program affords potential benefits for both farmers, land and water resources in 10 counties along the Upper Arkansas River. Landowners who enroll in CREP will receive up to 15 years of rental payments, a state sign-up bonus, as well as state and federal dollars to put irrigated acres into a conservation planting. The water rights associated with the enrolled land will be permanently retired. Enrollment is on a first-come, first served basis - individual county caps apply. Enrollment availability is only assured through June 2016, at this time.

What is CREP?

CREP is a targeted, enhanced Conservation Reserve Program (CRP), a federal program administered by USDA's Farm Service Agency (FSA). CRP was designed to prevent soil erosion, but also has provided water quality and wildlife habitat benefits. CREP allows the focus to be on a state resource concern; in this case, water conservation.

What are the water and soil benefits?

Reducing irrigation demands on the stream-aquifer system will reduce aquifer declines. It will also reduce the spread of saline river water into the aquifer and help restore stream and riparian health. Most acres enrolled have highly erodible, sandy soils. Multi-year transition with limited irrigation allows establishment of cover vegetation.

This program provides cash payments for land transition, while irrigation is still possible. Irrigation is permitted to establish a suitable land cover.

Among the approved practices eligible for cost share money are native grass seeding, wildlife habitat establishment, shallow water area construction, wetland restoration and filter strip and riparian buffer installation.

Are there targeted areas?

The program places priority on acreage where the retirement of the land and attendant water rights would have the greatest water conservation benefit and protect highly erodible soils.

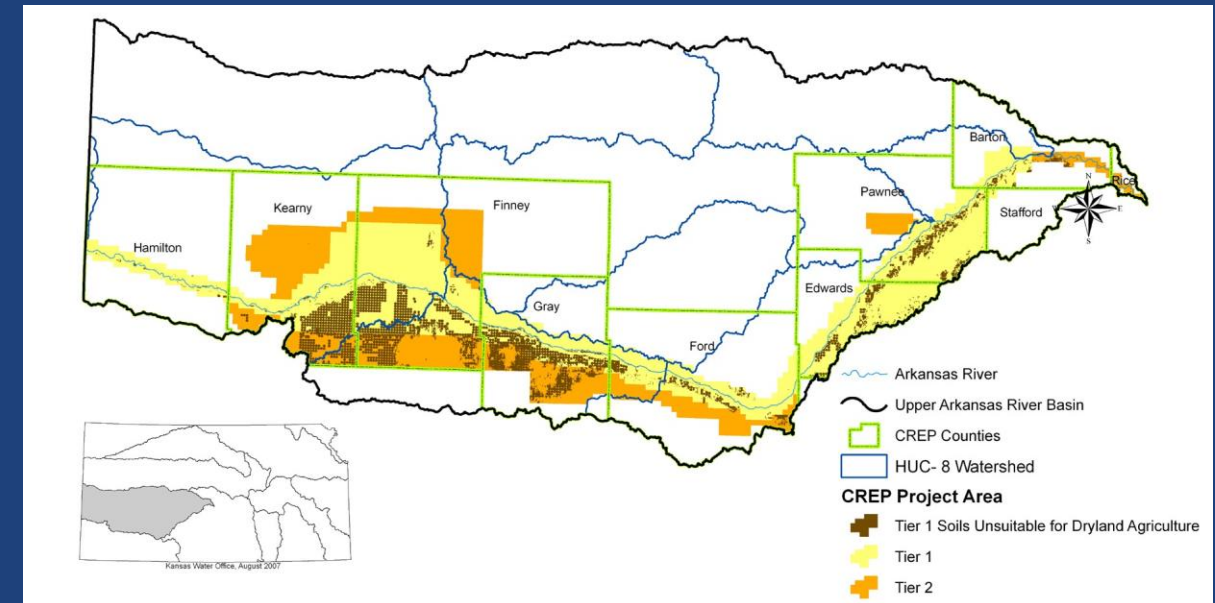
Are there wildlife benefits?

The conservation practices to be implemented open a host of opportunities for wildlife and landowner revenue related to hunting, recreation and other forms of agritourism.



Landowner visits with FSA, NRCS and KDA officials about CREP grass covers.

New in 2016 Increased Federal Rental Payments and State Incentives



8-Digit HUC	DAFP Approved Irrigated Rental Rates (\$/AC)
11030001 - Pivot	160
11030001 - Gravity	153
11030003 - Pivot	161
11030003 - Gravity	154
11030004 - Pivot	183
11030004 - Gravity	176
11030005 - Pivot	166
11030005 - Gravity	159
11030006 - Pivot	161
11030006 - Gravity	154
11030008 - Pivot	193
11030008 - Gravity	186

Eligibility Criteria

Federal and state eligibility criteria must be met to enroll your land in CREP. The partial list of the criteria will help to screen your eligibility in advance. Your local FSA office has a database to screen your application on these criteria.

- 1. At least one-half acre foot of water per acre was applied four out of six years (2008-2013).
- 2. At least 50 percent of the maximum annual quantity authorized to be diverted under the water right has been used in any three years within the most recent five years preceding offer submission for which DWR reports are available.
- 3. At least 51 percent of the offered land must be located within the CREP boundary.

Benefits to Farmers

- Federal annual irrigated rental and maintenance payments for 14 to 15 years.
- Rental payment on dryland cropland (i.e. center pivot corners) that’s part of a whole field enrollment. State upfront payment of either \$97 or \$55 per irrigated acre.
- Up to 50 percent cost share on seeding.
- Well plugging cost share of \$1,000 per well.
- Bonus payment of \$350 per acre for shallow water area development in Kearny or Finney counties.
- Land can be leased for hunting.



A pheasant calls this CREP area his home

As you decide whether CREP enrollment fits your business plan, you’ll be working with the USDA Farm Service Agency (FSA), Natural Resources Conservation Service (NRCS) and the Kansas Department of Agriculture (KDA).

- 1. First stop is your local FSA office. FSA personnel will use a CREP database to determine whether at least half of the irrigated land offered for enrollment lies within the CREP boundaries and if minimum water use criterion have been met. They also will be able to provide eligible producers with a preliminary estimate of rental and upfront payments.
- 2. Any questions on water rights will be referred to the KDA Division of Water Resources or Groundwater Management District No. 3 or 5. Producers whose land is accepted into the voluntary program are expected to permanently retire the associated water right(s).
- 3. KDA will make the state’s upfront payments and practice cost-share payments on approved CREP contracts.

Arkansas River CREP Partners
Working partners include FSA, KDA, NRCS Southwest Kansas GMD No. 3, Big Bend GMD No. 5, Pheasants Forever, KGS, KDHE, KWO and Kansas Alliance for Wetlands and Streams



Contact

Steve Frost, CREP Coordinator, KDA
(785) 564-6622, Steve.Frost@kda.ks.gov

Carla Wikoff, USDA-FSA
(785) 539-3531, Carla.Wikoff@ks.usda.gov

Applicants Water Right Questions:

DWR, Garden City	(620) 276-2901
DWR, Stafford	(620) 234-5311
GMD No. 3, Garden City	(620) 275-7147
GMD No. 5, Stafford	(620) 234-5352

Farm Service Agencies (FSA)

Barton	(620) 792-5329
Edwards	(620) 659-3142
Finney	(620) 275-0211
Ford	(620) 227-3731
Gray	(620) 855-3515
Hamilton	(620) 384-6955
Kearny	(620) 355-7911
Pawnee	(620) 285-2821
Stafford	(620) 549-3321
Rice	(620) 257-5184

Upper Arkansas River CREP

Conservation Reserve Enhancement Program

Water and Soil Conservation in the Upper Arkansas River Corridor



Sign Up Today
At Your Local USDA Farm Service Agency Office





United States Department of Agriculture
Natural Resources Conservation Service



2016 SCC Spring Workshops

Area I SCC Spring Workshop

Tuesday, March 8, 2016

American Legion Hall

235 Main Street

Grainfield, KS

Area II SCC Spring Workshop

Wednesday, March 9, 2016

KSU Experiment Station

4500 E. Mary Street

Garden City, KS

Area III SCC Spring Workshop

Thursday, March 10, 2016

NRCS Conference Center

747 Duvall

Salina, KS

Area IV SCC Spring Workshop

Tuesday, March 1, 2016

Pottorf Hall, CiCo Park

1710 Avery Ave.

Manhattan, KS

Area V SCC Spring Workshop

Wednesday, March 2, 2016

Old Iron Club

10392 Jade Road

Fredonia, KS

State Conservation Commission Meeting

January 20, 2016

FY 2017 Proposed Program Revisions

WRCSP

➤ **NRCS Code 449 Irrigation Water Management**

- Request by the Stevens County Conservation District to add Soil Water Probe Moisture Sensors as an eligible component under code 449 Irrigation Water Management.
 - One probe per 122 ac. of irrigated cropland.
 - Estimated cost including labor, website connections and professional fees for one year: \$2,500 per probe.
 - 5 to 10 year maintenance. Technology could change in 10 years so the district recommends a 5 year maintenance agreement.
 - Landowner would need to show a 2.5 inch reduction in water use from an established previous 5 year average using water use reports sent to KDA.
 - Landowner would be responsible for the annual maintenance costs after first year. Annual cost estimated at \$300.
- NRCS provides cost-share assistance for Soil Water Probe Moisture Sensors under the EQIP program.
 - Landowner must follow an irrigation scheduling system.
 - Landowner receives a payment for the sensors. FFY 2015 payment of \$1011.18.
 - Landowner receives an annual payment per acre with a minimum period of three years. Payment amount in FYY 2015 was \$4.03 per acre.
- Staff recommendation is to take this proposed program revision to the Spring Workshops for conservation district and NRCS local staff input.

WRSCP and NPSPCP

- Request by Shawnee County Conservation District to allow extra ranking points for applicants that have attended a conservation related workshop i.e. no-till, grazing, etc.
 - SCC approved allowing extra ranking points for applicants that have attended a grazing management workshop for FY 2016. This applies for applications for grazing practices.
 - The proposed program revision would be to allow extra ranking points for applicants that have attended a no-till or cover crop workshop. This would apply for applications for erosion and sediment control practices.
 - Staff recommendation is to take this proposed program revision to the Spring Workshops for conservation district and NRCS local staff input.



Conservation Partnership Meeting Survey

The Kansas Conservation Partnership (KACD, KDA-DOC and NRCS) is asking for member input on how we can restructure our meetings to make them even more productive. The results of this survey will be presented at the SEC Spring Workshops and the KACO Fall Meeting; for discussion. Final decision, regarding partnership meeting structure, will be made at the 2016 KACD Annual Convention.

Please complete the survey individually and submit by February 29, 2016. We would like participation from all districts and NRCS employees, and especially board supervisors. The District will be sending the survey link by email to all Conservation Districts and to the supervisor(s) that have email addresses in the Cross Share and Information Management System (CSIMS).

District managers - Base for the link to all board supervisors. If supervisors are unable to complete the survey online, please print the survey for them. Please submit the survey online or mail/e-mail the document to Megan Green <megan.green@ksdnc.gov> at the KACD.

Revised



Who are you?

1. What best describes you? *

- ☐ District Employee
- ☐ District Supervisor
- ☐ NRCS Employee

2. What KACD area are you located in?

- ☐ Area I
- ☐ Area II
- ☐ Area III
- ☐ Area IV
- ☐ Area V

Area Meetings

SCC Spring -> shop!::, 1-ft., CD Fau II', 1eeltings. NIRC'S ALL Personne ..,Jeetings

.Should it!!he SCC spring •tmrks.'hops be discontinued?

:2. Should *ithe*!:<AICD fall meetings be diSicontinued!

C:1 Jo

3.Should it'hefil le SOC spring1 work-shops be disoontin d as indi Vidual meetings lilTld • combined withthe four NRCSJiiill Personnel Meelinga in March? ¹.

("fhie. •cmce(!lt Vfl Du1d al1011• a111 a. ll peroorme1 mi0minig ae<E: Eii •JLn f. alilal"l.ed bi partner hfeakout E.eaai0n:5)•

n !No

4. V/hat should be the l enqth of the SCC spring lkorks1hop?

1,2. da:lti(9aim to 111c•D'l'l(1

ll dla.(9am 1io 2pm:

4. Y/hat :should be the l length of the KAICD Fall Meeling?

(< 1/2. dar ('9am to tna>D'l'l:

um dla.(9am 11:33,pm)l

5. Should :area parlt nsship meetings include e catered meal on :site!

(mll f for hlllI da,- r mneetings..Atl:Encieea wil] :sitiU b.E re.qu'irecil tG !='a- if. or th,ejr meal.:

.f1.Should area parll insship meetings be roteltd to different towns: • ""ithin each :aire-a? it

Check a[lithaitapiP)•

f.alU Meeti1nga

I : Sp il'llg Meeillngis

fo IRcrotaitiol'll

7. Should auperi.iis. of 11 l rain m ng breakout sessions be provided atllhe partnership mee-tings'l'

Check all'frlhafl: all(plj•

1: F.all Metlti 1ga

L: Sp i nig P..leēings

1: :.ACfDi C:in•o'erutcm

L'. Jono:-

8. What should be the focus of KA COF all meetings? -;

Check all that apply:

- ☐ Policy and Regulations
- ☐ NACD Policy Updates
- ☐ Program Reliability (new practice and eligibility)
- ☐ Information and Education (presented by district)
- ☐ Agriculture Related Topics (geographically specific) (i.e. High "technology"; "Information"; "Management")
- ☐ District Operations Topics
- ☐ Partnership Issues
- ☐ Other: _____

9. What should be the focus of SCC Spring Meetings? ""

Check all that apply:

- ☐ Policy and Regulations
- ☐ Policy Updates
- ☐ Program Reliability (new practice and eligibility)
- ☐ Information and Education (presented by district)
- ☐ Agriculture Related Topics (geographically specific) (i.e. High "technology"; "Information"; "Management")
- ☐ District Operations Topics
- ☐ Partnership Issues
- ☐ Other: _____

10. Do you feel the information presented at Partnership meetings could be emailed in lieu of holding the meeting?

☐ Yes

11. What would be more beneficial to improving member involvement with in the partnership? -;

- ☐ Increase attendance at partnership meetings.
- ☐ Increase on-farm alternative labor force to each other to partnership meetings.
- ☐ Other: _____

12. What is the best information to have presented at partnership meetings that will increase Conservation District Staff and Supervisor interest and involvement?

KACD Annual Convention

1. Should there be a lunch provided on Tuesday to increase attendance at the Tuesday functions? ¹

1) •Jo

2. Should the Business Session be rescheduled, and if so, what day should it be moved to? ^A

• Snay at the same time on Tuesday

• Be held earlier on Wednesday

☐ Monday

☐ Sunday

3. What topics of discussion should be offered at the KACD Convention?

Check all that apply

☐ >Diversity and Full Employment

☐ ACD Policies and Legislation

☐ Agriculture and Environmental Policy

☐ Domestic and International Trade Policy

☐ Agriculture and Technology Policy

☐ International Trade Policy

☐ Other: _____

☐ Other: _____

4. If you do not regularly attend the KACD Convention, what prevents you from attending? ^A

Check all that apply

☐ Regular attendance

☐ Lack of time

☐ Time away from home/work

☐ Topics of interest

☐ Other: _____

5. What would encourage you to attend and spark your interest in attending the KACD Convention? ^{*}

Check all that apply

☐ Scholarships and assistance

☐ Topics of interest

☐ Other: _____

If you would like to be included in a prize drawing for completing this survey, please provide your name and county. Names will be kept confidential from your responses.

2016 Conservation Districts Annual Meeting Information

COUNTY	DATE AND TIME	RESERVATION	MEETING LOCATION	SPEAKER/PRESENTER	PROGRAM DESCRIPTION	PRESENTER'S TELEPHONE	FEE
Allen	February 17 2016 06:00 PM	February 08 2016	Bass Community Bldg.-N. Buckeye- Iola, KS	Pending	Jeff Davidson-Kansas Cowboy Poet/Singer		
Anderson	February 03 2016 06:00 PM		St. Rose Catholic School 520 East 4th Garnett, Kansas	N/A	Overview of Award Winners and District Activities		
Atchison	February 18 2016 06:00 PM	February 10 2016	ACCHS auditorium, Effingham, Ks		Dinner, Business Meeting, Present Poster & Banker Awards		
Barber	January 25 2016 06:00 PM	January 18 2016	Kiowa Community Building Kiowa, KS		Awards		
Barton	January 23 2016 06:30 PM	January 15 2016	Barton County Community College		business		
Bourbon	February 06 2016 06:00 PM		Fort Scott Middle School Commons Area		Speaker, Conservation Awards, Poster Awards		
	February 16 2016 11:00 AM	February 12 2016	Fisher Community Center 201 E Iowa St. Hiawatha, Ks. 66434		75th Anniversary Meeting		
Butler	February 04 2016 06:00 AM	February 01 2016	The Benton Church, 14300 SW 20th, Benton KS		170 Anniversary		
Chase	February 02 2016 06:00 PM	January 25 2016	Community Building Swope Park Cottonwood Falls, KS		Bankers Award Winner		
Chautauqua	February 22 2016 06:00 PM	February 19 2016	Sedan Country Club, Sedan, KS		Business Meeting/Election/Conservation Awards Presented		
Cherokee	February 29 2016 06:00 PM		Columbus Unified High School Cafeteria and Auditorium, 124 South High School Ave, Columbus, KS		Business Meeting, Election of Supervisor, Presentation of Conservation Award, and Drawing for Door Prizes		

Cheyenne	February 15 2016 06:00 PM	February 01 2016	Bird City Legion Hall-Bird City, KS		Producer Appreciation Meal, Meeting, Bankers Awards, Poster Awards, Door Prizes		
Clark	February 15 2016 06:30 PM	February 08 2016	Ashland High School				
Clay	February 08 2016 06:30 PM	February 03 2016	United Methodist Church, Clay Center, Kansas	Jeff Davidson	songs, historical facts and slides revisiting the history of Kansas		
Cloud	February 04 2016 06:30 PM	February 01 2016	OUR LADY OF PERPETUAL HELP PARISH HALL; 307 E 5TH, CONCORDIA, KS	DAREN SANDERS	MEAL, ENTERTAINMENT BY MCKINNEY SISTERS AND MEETING TO FOLLOW	(785) 427-2232	0.00
Coffey	February 17 2016 06:00 PM	February 10 2015	Burlington High School		Business Meeting and Conservation Awards		
Comanche	January 16 2016 06:30 PM		Veterns Building				
Cowley	February 11 2016 06:00 PM	February 04 2016	Baden Square, 1401 E 6th Ave, Winfield, KS 67156		Presentation of Banker Awards and Grassland Award, Presentation of County Poster and Limerick Winners, Meal and Entertainment		
Crawford	February 20 2016 06:00 PM		Girard High School Cafetera, 415 N. Summit, Girard, Kansas		Banker's Award, Continued Conservation Award, Grassland Award, & Poster Contest Awards.		
Decatur	February 01 2016 06:30 PM	January 18 2016	GATEWAY CIVIC CENTER 1 Morgan Drive Oberlin, KS		Appreciation Meal; Banker Awards; Meeting; Poster Awards		
Dickinson	February 11 2016 06:30 PM		Sterl Hall 619 N Rogers St, Abilene, KS 67410		Meal, business, awards, entertainment		
Doniphan	January 25 2016 06:00 PM	January 20 2016	Troy Community Building, Troy, KS 2110 Harper St,	none	Educational Contest Awards, Educational Booths, Kansas Bankers Awards, and Meal		
Douglas	February 09 2016 06:00 PM	February 02 2016	Lawrence, KS 66046		Business meeting, Bankers awards, Poster contest		
Edwards	February 20 2016 06:30 PM		Edwards County Fair Building 1305 S Niles Kinsley	John Klempa			



Elk	February 17 2016 06:00 PM	February 12 2016	Cox Building, Howard, KS		Business Meeting/Election/Conservation Awards Presented		
Ellis	January 28 2016 06:30 PM	January 25 2016	Rose Ball Room & Banquet Hall, Hays, KS	Full Court Press	Hays Middle & High School singing group		Donation
Ellsworth	January 25 2016 06:00 PM	January 19 2016	American Legion, Ellsworth	N/A	Speech Contestant Winner and poster awards		0
Finney	February 24 2016 08:30 AM	February 17 2016	Grand Stand Meeting Room, Finney County Fair Grounds, Garden City, KS 67846		How Healthy Is Your Conservation Plan		
	February 06 2016 06:00 PM	January 29 2016	Ford Co. 4-H Fair Bldg., 901 West Park Street, Dodge City	Jeff Davidson	Kansas--Where the West Begins	(620) 583-4437	\$425.00
Franklin	January 21 2016 12:00 PM	January 14 2016	Fr Co Fair Grounds		Business Meeting and Bankers Award Presentation		
Geary	January 28 2016 06:00 AM	January 25 2016	4-H Center, Spring Valley Road, Junction City, KS	Jim Foy	Cowboy songs and stories		\$300.00
Gove	February 08 2016 06:00 AM	January 28 2016	American Legion Grainfield				
Graham	January 25 2016 06:00 PM	January 15 2016	1 Ringneck Dr - Hill City SR-JR High - Hill City, KS 67642	music	business, entertainment, awards		donation
Grant	January 29 2016 12:00 PM		524 S. Main Street Ulysses ks	Brittney Seger/Leonard Wilson		(620) 356-1744	
Gray	February 13 2016 06:30 PM	February 06 2016	Gray Co Rec Center, 17002 US Hwy 50, Cimarron, KS 67835	Daniel Haneke	Business meeting, poster, KBA and scholarship awards; Game Warden will do a presentation and show skins and skulls of native animals	(620) 450-7194	0
Greeley	February 08 2016 06:00 AM	January 29 2016	4-H Building - Tribune, Ks				
Greenwood	January 09 2016 06:30 PM	January 04 2016	Eureka Jr/Sr High School				

..S. el "r

Hamilton	January 25 2016 12:00 PM		Hamilton County Fair Building		Appreciation Lunch, Business & Election		
Harper	February 08 2016 06:00 PM	January 25 2016	Municipal Hall, 130 E Main, Anthony, KS 67003	Rich Abel	Bee Keeping		0
Harvey	February 01 2016 06:00 PM	January 29 2016	Halstead High School	McKinney Sisters	Blue Grass Music band	(620) 345-2744	\$150
Haskell	January 25 2016 12:00 PM	January 22 2016	Haskell County Fairgrounds Commerical Building	Mark Rude	Awards, election, door prizes, meal, record of accounts		
Hodgeman	February 20 2016 06:00 PM	February 12 2016	Elks Plaza (High School), Hanston, Kansas	TBD	Awards, meal, speaker		
Jackson	February 17 2016 06:00 PM	February 10 2016	First United Methodist Church, 1401 West 4th Street, Holton, KS 66436				
Jefferson	January 27 2016 06:30 PM	January 22 2016	Oskaloosa Schools 404 Park Street, Oskaloosa KS 66066	OHS Jazz Band	Meal, Jazz Band, Opening Ceremonies FFA Chapter, Business Session, Bankers Awards, door prizes		0
Jewell	February 17 2016 06:30 PM	February 03 2016	Community Building 214 N. High St. Mankato, KS 66956	M&M Sisters	meal, meeting, awards presentation, entertainment	(785) 697-2935	\$150 plus mileage
Johnson	January 21 2016 06:30 PM	January 15 2016	Sunset Building, 11811 S. Sunset Drive, Olathe, KS 66061	None	Awards		
Kearny	January 25 2016 06:00 PM	January 22 2016	Kearny County Fair Building	Kearny Co. Historical Society	History of Kearny County	(620) 355-7448	Donation
Kingman	January 25 2016 06:30 PM	January 19 2016	Kingman VFW Hall, 126 N Main, Kingman				
Kiowa	February 02 2016 06:30 PM	January 25 2016	600 West Lincoln Ave. Greensburg, Kansas 67054		Banker Awards PowerPoint Presentation		0.00

Labette	January 30 2016 06:00 PM	January 25 2016	Labette County High School, 601 S. High School Str., Altamont, KS	Erika Nelson	Jackalopes, Hodags, and Other Larger Than Life Myths from the American Road	(785) 760-0826	
Lane	January 30 2016 06:00 PM		St. Theresa Catholic Hall, 322 S First, Dighton, KS 67839	Scott Roberts / Storm Chaser	Dinner, Annual Meeting, Awards Program, Entertainment	(316) 619-6376	
Leavenworth	February 06 2016 06:00 AM	January 15 2016	Lansing Community Center, 800 1st Terrace, Lansing Ks. 66043				
Lincoln	February 06 2016 06:30 PM	January 27 2016	Lincoln Elementary School, 304 S. 4th Street, Lincoln, KS 67455	Dave Thorell	Voice of KRVN radio.	(308) 991-5109	\$600
Linn	February 03 2016 06:30 PM	January 27 2016	Jayhawk Elementary, 414 S 5th St., Mound City, KS	FFA Chapters	FFA Chapter Updates, Awards Presentations		Donation
Logan	January 25 2016 06:30 PM	January 22 2016	Buffalo Bill Cultural Arts Center	Candice Fitch Dietz	New Horticulture Agent i:discussing farming		0.00
Lyon	February 01 2016 06:00 PM	January 25 2016	ANDERSON BUILDING LYON COUNTY FAIR GROUNDS	ANNIE WILSON	MUSICIAN		\$100.00
Marion	February 27 2016 06:30 pM	February 18 2016	Eatstmoor UM Church, 105 Eastmoor Dr., Marion, Ks.	Stephen Schmidt	Santa Fe Trail		\$50.00
Marshall	January 27 2016 06:30 PM	January 20 2016	American Legion		Conservation & Poster Awards		Free
McPherson	January 25 2016 06:30 PM Sisters	January 20 2016	4-H Building 710 W woodside McPherson, Ks.		McKinney		
Meade	February 20 2016 06:00 PM	February 05 2016	MHS 310 E. Grant	Scott Roberts	Weather		0
Miami	January 19 2016 06:00 PM		Lighthouse Presbyterian Church, Paola, KS		Presentation of annual report, presentation of conservation awards, election of officers.		

Mitchell	February 03 2016 06:30 IPMI	January 27 2016	St Johns High School 209 N Cherry St. Beloit, KS 67420				
Montgomery	February 06 2016 05:00 PM	January 25 2016	Independence Community College West 2615 West Main Independence, KS	none			0.00
Morris	January 30 2016 06:30 PM	January 27 2016	Morris County Community Building - 614 US Hwy. 56, Council Grove, KS 66846	The "Swingin' Spurs"	Student & Photo Awards, Banker/Grassland/BufferNI/RAPS awards, election and student and adult raffles	(785) 770-0217	\$250.00
Morton	February 20 2016 07:30 PM	February 12 2016	Elkhart Civic Center 400 Orchard St. Elkhart		Business Meeting, Present Poster & Banker Awards		0.00
Nemaha	February 18 2016 06:00 PM		Nemaha County Community Building 1500 Community Drive Seneca KS 66538		Business Meeting and Election , Bankers Awards, Conservation Awards, Poster & Limerick Award Presentation	(785) 336-2186	
F	February 01 2016 06:00 PM	January 25 2016	10300 Highway 59 Erie, Kansas 66733		Banker Award winner and poster winners		
	February 22 2016 06:30 PM	February 12 2016	Sacred Heart School Gymnasium	Flying Debris	Juggler		1 650.00
Norton	January 25 2016 06:00 AM	January 21 2016	Saint Francis Parish Hall, Norton , KS	N/A	Banker's & Poster Awards		0.00
Osage	February 01 2016 06:00 PM	January 25 2016	Osage City School lunchroom, 420 S 4th St, Osage City	none	75th annual meeting, presentation of banker awards and poster contest awards		
H	February 08 2016 06:30 PM	January 31 2016	St. Aloysius Parish Center, 219 N. Elm, Osborne, Kansas	to be determined	Meal followed by business meeting and awards presentation		
Ottawa	January 30 2016 06:00 PM	January 20 2016	Minneapolis Grade School, 312 Delia, Minneapolis KS 67467	Julie Sutton	Acoustic singer/songwriter of folk music www.reverbnation.com/juliesutton Bankers Tour & Poster/essay contest awards	(620) 262-1987	\$350.00

Pawnee	January 23 2016 06:00 PM	January 14 2016	Pawnee Co Fairgrounds, Haas Bldg. Larned, Ks		Dinner, Business Meeting, Election, Banker Awards		
Phillips	f:clo, \3						
Pottawatomie	January 25 2016 06:00 PM	January 20 Essay 2016	St. Joseph's Catholic Church Parish Hall in Flush, Kansas		70th Anniversary --- NCF Envirothon Report from Rock Creek High School, Poster, Limerick and awards, Banker Award Winners and Grassland Award Presentation, Business Meeting and Election		
Pratt	January 25 2016 06:00	January 19 2016	Pratt Area 4-H Center, 81 Lake Road, Pratt, KS		Meal followed by Annual Mtg. & recognition of Banker Awards & Poster/Essay/Limerick Awards		
Rawlins	AM January 28 2016 05:30	January 14 2016	Columbian Hall, Atwood, KS	Ron Shchilling	Annual meeting		350.00
Reno	PM January 11 2016 06:00 PM	January 04 2016	Amish Community Building	NIA	Come & Go Meal, Business Meeting to be held at ?PM, Conservation Awards		NIA
Republic	February 04 2016 06:00 PM	February 01 2016	Cuba Community Hall, Main Street, Cuba, Kansas	The Three Amigos	Country/Folk Musicians	(785) 476-2645	
Rice	January 25 2016 06:00 PM	January 15 2016	Henry's Restaurant Lyons, KS		Annual Report, 2015 Banker's Conservation Awards, Conservation Poster Awards		
Riley	February 04 2016 06:30 PM	January 28 2016	Pottorf Hall, Manhattan KS	Mary Knapp	State Climatologist speaking, poster and essay contest winners		0
Rooks	PM February 01 2016 06:00 PM	January 15 2016	Stockton High School		Poster contest/Bankers awards		
Rush	January 30 2016 06:30 PM	January 25 2016	St. Michale's Parish Hall, 918 Lincoln St., Lacrosse KS	Trilogy	2015 Accomplishments, Banker Awards, Poster Awards & Trio Group-Gospel/Country	(785) 639-3570	250
Russell	February 08 2016 06:30 PM	January 25 2016	4-H Building Russell KS		Banker Winners & Poster & Limerick Winners		
Saline	January 21 2016 06:30 PM	January 14 2016	Webster Conf. Ctr. 2601 N Ohio, Salina, KS	McKinney Sisters	Report, Business meeting & Entertainment		\$300.00

r

\Q._ d

Scott	February 11 2016 12:00 PM		Scott City Fair Grounds, Scott City, KS	N/A	Served lunch, presentation of awards		
Sedgwick	February 24 2016 06:00 \$150.00 AM	February 19 2016	Sedgwick County Extension Education Center Ridge Road and North 21st St.	Lady Dee-"Me and the Boyz"	Musical		
Seward	January 23 2016 06:30 PM	January 19 2016	SCCC 1801 N. Kansas Ave. Liberal, Ks.	Ryan Helmer	Wotu, axe'		
Shawnee	February 04 2016 06:30 PM	January 27 2016	KS Museum of History at 6425 SW 6th Avenue , Topeka		Highlight 2015 district activities		
Sheridan	January 25 2016 12:00 PM		Hoxie 4-H Building, North Hwy 23, 1/2 block north of hwy intersection 23 & 24, Hoxie, KS		Meal, Business meeting, KS Bankers awards		
Sherman	February 12 2016 12:00 PM		4-H Building Sherman Co. Fairgrounds	GMD#4	Future water concerns and solutions		0.00
Smith	February 01 2016 06:30 PM	January 25 2016	National Guard Armory, 101 Armory RD, Smith Center, KS 66967	Kill Creek Rising	2015 Accomplishments, Bankers' Awards, Business Meeting, Entertainment	(785) 345-3225	200.00
Stafford	February 08 2016 07:00 none PM		Board room at USDA service center, St John KS	none	Meal followed by meeting and elections		
Stanton	January 26 2016 06:00 PM	January 22 2016	4-H Building, Johnson, Kansas		bankers award, poster contest winners		
Stevens	February 20 2016 06:30 PM	February 12 2016	Memorial Hall, 6th 7 Monroe Hugoton, KS 67951	Walt Beesley	Appreciation Banquet, Business & Election.		0
Sumner	February 13 2016 06:00 PM	January 29 2016	Raymond Frye Complex, 320 N. Jefferson Ave., Wellington, KS	Pending	Pending		

[illegible]

Trego	February 08 2016 07:00 PM		Cooperative Western Electric 635 S 13th Street WaKeeney, KS 67672				
Wabunsee	January 21 2016 06:30 PM	January 15 2016	Mission Valley High School Commons Area, Eskridge		Recognizing the 2015 Bankers Award Winners		
Wallace	January 25 2016 06:00 PM	January 08 2016	WCHS Commons Area 520 N Main Sharon Springs, KS 67758				
Washington	February 06 2016 06:30 PM	January 29	Washington County High School Gymnasium	The McKinney Sisters	Bluegrass Gospel Music	(620) 345-2744	250.00 donation
Whit Wichita	January 25 2016 06:30 PM	January 20 2016	Leoti Community Bldg				
Wilson	January 16 2016 06:00 PM	January 06 2016	Fredonia High School, 916 Robinson, Fredonia KS 66736		Bankers Award Winners, speech presentation by 2015 speech contest winner, presentation of poster contest winners,		
Woodson	February 06 2016 06:30 PM		4 H & Community Building 713 South F St Yates Center Kansas 66783	none	Mal, Annual board meeting, Award winners Presentation		none
Wyandotte	February 11 2016 06:30 PM	February 04 2016	Edwardsville Community center 396 3rd street	TBA			



Agenda 2016 SCC Spring Workshops

<u>TIME</u>	<u>TOPIC</u>	<u>PRESENTER</u>
9:00 a.m.	REGISTRATION	Division of Conservation (DOC)
9:15 a.m.	Welcome/Introductions	SCC Area Commissioner
9:30 a.m.	DOC Report/Updates <ul style="list-style-type: none"> • Budget • FY 2017 State Cost-Share Program Revisions • Personnel Changes 	DOC Staff
10:00 a.m.	NRCS Report <ul style="list-style-type: none"> • Programs Update • Budget Update 	Eric Banks, NRCS
10:20 a.m.	Break	
10:30 a.m.	Partnership Survey on Meeting Structure (Breakout Session)	Partnership
11:30 a.m.	Employees Organization Report	Area EO Representative
11:40 a.m.	KACD Report <ul style="list-style-type: none"> • 2016 NACD Convention • 2016 KACD Convention • State Fair Booth 	KACD Area Director/Executive Director
12:00 p.m. Lunch on your own (Except Area I, IV, V) - Attendees will pay for catered meal at site).		
1:00 p.m.	Kansas Forestry Topics	KFS
1:15 p.m.	Envirothon/Information Education updates	CD and DOC Staff
1:25 p.m.	Building Relationships with County Commissioners	DOC staff and CDs
2:25 p.m.	DOC Training Videos	DOC Staff
2:30 p.m.	Open discussion and closing comments	
2:30 p.m.	ADJOURN	SCC Area Commissioner



**NRCS HIGHLIGHTS OF ACTIVITIES
for the
STATE CONSERVATION COMMISSION
MANHATTAN, KANSAS
January 20, 2016**

OPERATIONS

- The following personnel changes have been made within the Natural Resources Conservation Service (NRCS) supervisory positions:
 - Phillip D. Chegwiddden, District Conservationist, Ellsworth, will be the acting supervisory district conservationist for the Lincoln Management Unit from December 13, 2015, to February 5, 2016.
 - Ronnie R. May started his duties as area resource conservationist, Emporia Area Office, on December 13. Ronnie was a district conservationist in Albany, Georgia.
 - Ryan L. Still, Soil Survey Office Leader, Hays MLRA Office, will be the acting state soil scientist from January 3, 2016, for a period of 60 days.
- Work continues on filling several vacant positions and student positions through our National Service Delivery Team for Staffing.
- Although the national budget was signed into law, Kansas NRCS is still awaiting final budget allocations. The end of January is the expected date of notification. Most likely, Kansas will receive less Conservation Technical Assistance (CTA) funds than last year.
- With administrative transformation and reduced staff, we do have a backlog of financial program payments to be reviewed before payments can be made. We should be able to catch up in the next few weeks.
- NRCS is being required to convert several owned vehicles to Government Services Administration (GSA) leased vehicles over the next few years. This will reduce the number of vehicles that NRCS will be buying and selling. It will also allow NRCS to rotate to newer vehicles a bit more frequently. Currently, NRCS maintains owned vehicles an average of just over 10 years and/or 100,000 miles.

PROGRAMS

Conservation Stewardship Program (CStP)

The CStP will remain essentially the same for fiscal year (FY) 2016 as it was in FY2015. Significant changes are expected for FY2017.

Emergency Watershed Protection Program (EWP)

NRCS maintains one eligible non-exigency project on the National Headquarters EWP Waitlist for future funding: City of Sedgwick, Sand Creek streambank stabilization and debris removal. The EWP Program purpose is to assist project sponsors in implementing emergency recovery measures to relieve imminent hazards to life or property created by a natural disaster that caused a sudden impairment of a watershed.

Environmental Quality Incentive Program (EQIP)

EQIP Rollout Trainings are tentatively scheduled for the four NRCS administrative areas for field office staff and partners in mid to late February.

Regional Conservation Partnership Program (RCPP)

- RCPP Rollout Trainings have been scheduled for the five approved projects in Kansas for field office staff and project sponsors beginning January 13 and ending January 26.
- No word yet regarding The Nature Conservancy's RCPP proposal that was submitted for consideration. Chief Weller is expected to make RCPP Project Approval announcement soon.

Watershed Rehabilitation Program Activities

- The NRCS Water Resources and Engineering Staffs have identified approximately 70 federally assisted High Hazard dams that have not had a dam assessment previously completed. Funding assistance for dam assessments is available through the Watershed Rehabilitation Program. Kansas NRCS plans to target at least 20 sites for FY16 Rehab funding.
- Rehabilitation planning for five watershed dams in Butler County continues to progress well with public meetings being conducted to bring the public up-to-speed, gain input on the project planning and review viable alternatives for consideration.
- NRCS is preparing for FY16 Watershed Rehabilitation Program funding assistance. Plans are to submit a request for Design Phase funds for those dams presently involved with Planning Phase.
- NRCS field office staff are currently working with local watershed districts to complete Annual Dam Safety Inspections on federally assisted structures. To date, 78 percent of the required inspections have been completed and submitted to the state office for review, filing, and updating of the National Inventory of Dams database. All 2015 inspections were due by Dec. 31, 2015.

TECHNOLOGY

Engineering

- Ed Radatz, Hydraulic Engineer, in the State Office has announced his upcoming retirement effective April 2, 2016. His expertise in hydrology, particularly in the realm of developing breach routing maps for watershed dams will be greatly missed and difficult to replace.
- Curtis Janssen, SCE, along with Ed Radatz and National Design Engineer, Steve Durgin will be giving a presentation on DamWatch, an extremely valuable tool in the area of Watershed Dams, at the State Association of Kansas Watersheds 65th Annual Meeting this month in Topeka.
- Engineering Spot Check throughout the state is now complete thanks to the fine efforts of the Area Engineering Staffs. Engineering reviews of several higher class level jobs and Technical Service Providers (TSPs) jobs are also being conducted by the State Office Engineering Staff. Spot checks and higher level reviews are valuable tools in ensuring quality engineering work is performed in all phases of design and construction—with the ultimate benefit being realized by the producer/landowner.

OUTREACH

- News Release:
Agricultural Conservation Easement Program Application Deadline Set for January 15, 2016

SALINA, December 28, 2015—The U.S. Department of Agriculture's (USDA's) Natural Resources Conservation Service (NRCS) is now accepting applications for the Agricultural Conservation Easement Program (ACEP). This program, created under the 2014 Farm Bill, provides funding for the purchase of conservation easements to help productive farm and ranch land remain in agriculture and protect critical wetlands and grasslands.

- 16 Conservation Editions were recently issued to field offices for use in their local newspaper

- NRCS will be having a booth display at the following conferences:
SAKW Annual Conference–January 19-20
No Till on the Plains, Salina–January 26-27
Women Managing the Farm, Manhattan–February 4-5
Kansas Natural Resources Conference, Wichita–February 4-5

**Conservation District Documents
Not Received by the DOC as of 1/20/16**

Monthly Board Meeting Minutes, Treasurer's Reports & Unpaid Bills Reports:

Clark – January 2015, November 2015

Coffey – July 2015

Haskell – April 2015, August 2015, October 2015, November 2015

Norton – June 2015

Pawnee – November 2014

Wyandotte – October 2014, February 2015, August 2015, September 2015, October 2015,
November 2015

2013 Notification of CD Audit Review Form (Due 1/1/2015)

Sumner County

2016 Budget (Due 9/1/2015)

Allen County

Wyandotte County

2016 Financial Management Checklist (due 9/1/2015)

Allen County

Miami County

Wyandotte County

2016 Annual Work Plan (due 9/1/2015)

Wyandotte County

2014 Annual Report (3/1/2015)

Seward